



CLIMATE OUTLOOK

MAY 2025 – OCTOBER 2025

Presented by:

Joseph Q. Basconillo, Ph.D.
Climate Monitoring and Prediction Section (CLIMPS)
Climatology and Agrometeorology Division (CAD)

LIVE via Zoom and DOST PAGASA Facebook and YouTube Channel

Dost_pagasa @dost_pagasa DOST PAGASA Weather Report <https://bagong.pagasa.dost.gov.ph>



183rd

**Climate
Forum**

CONTENT



#BantayKlima



01 ▶ **ENSO Update**

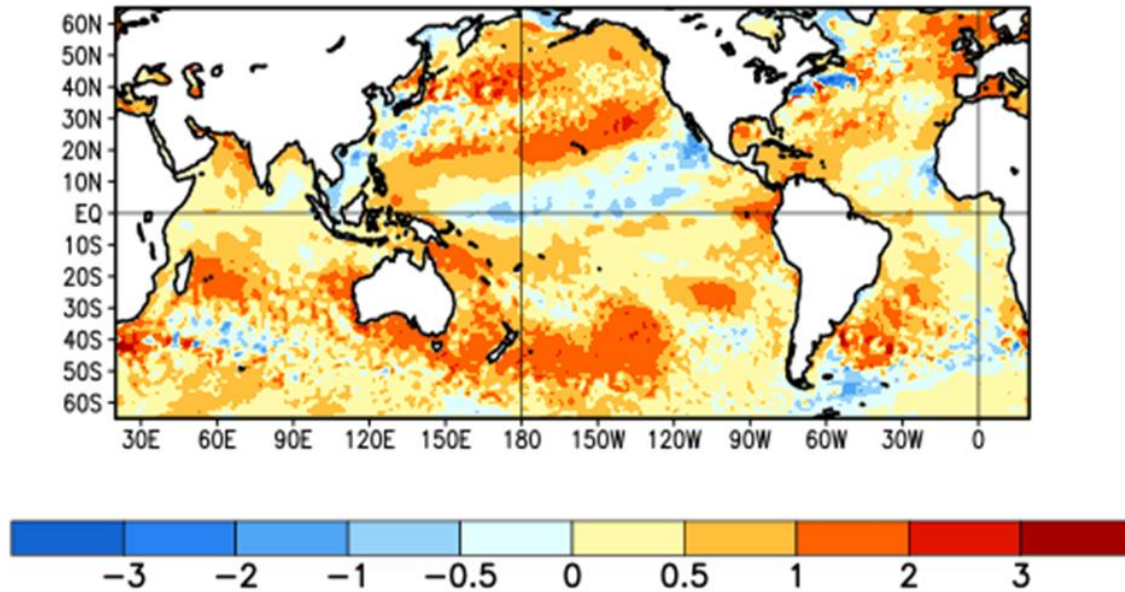
02 ▶ **Climate Outlook**
(May 2025 – October 2025)

03 ▶ **Summary**

Conditions in the Tropical Pacific

Oceanic Indicator

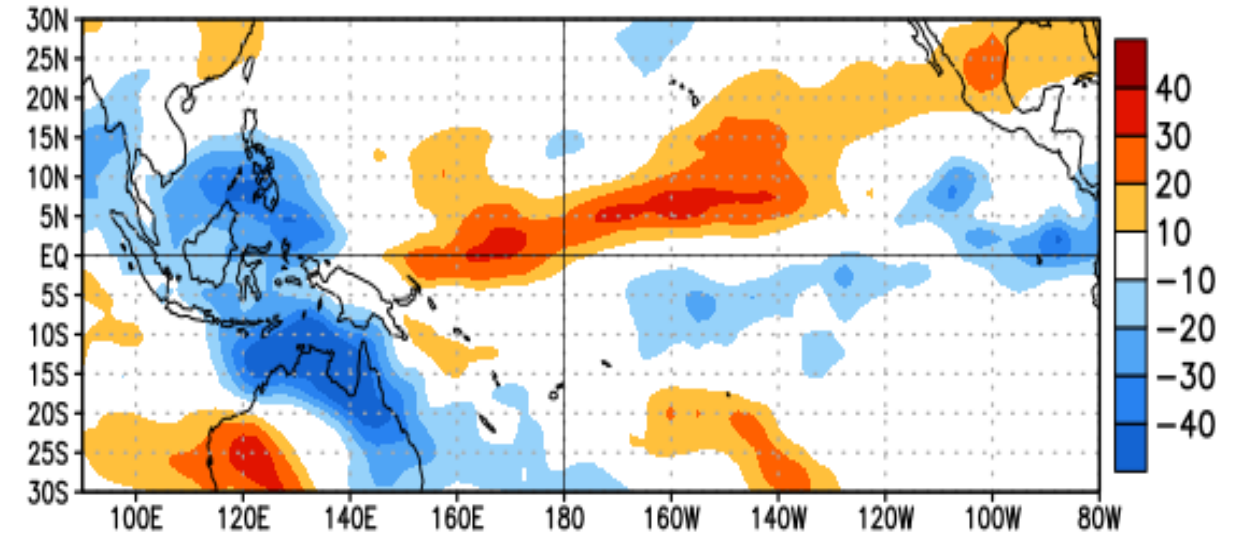
Average SST Anomalies
23 MAR 2025 – 19 APR 2025



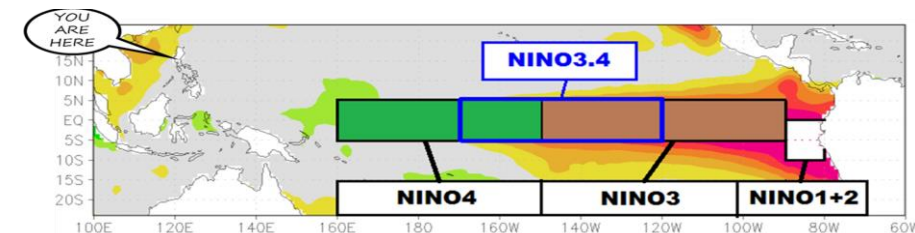
- In the last four weeks, equatorial SSTs were above average in the coastal Niño and northwestern Pacific Ocean
- Below average SSTs were evident in the central and east-central Pacific Ocean.

Atmospheric Indicator

OLR Anomalies
21 MAR 2025 to 15 APR 2025



- Above-average OLR (suppressed convection and precipitation) was observed around the Date Line and western Pacific.
- Below-average OLR (enhanced convection and precipitation) was evident over Indonesia, the Philippines, northern Australia, and the eastern Pacific.

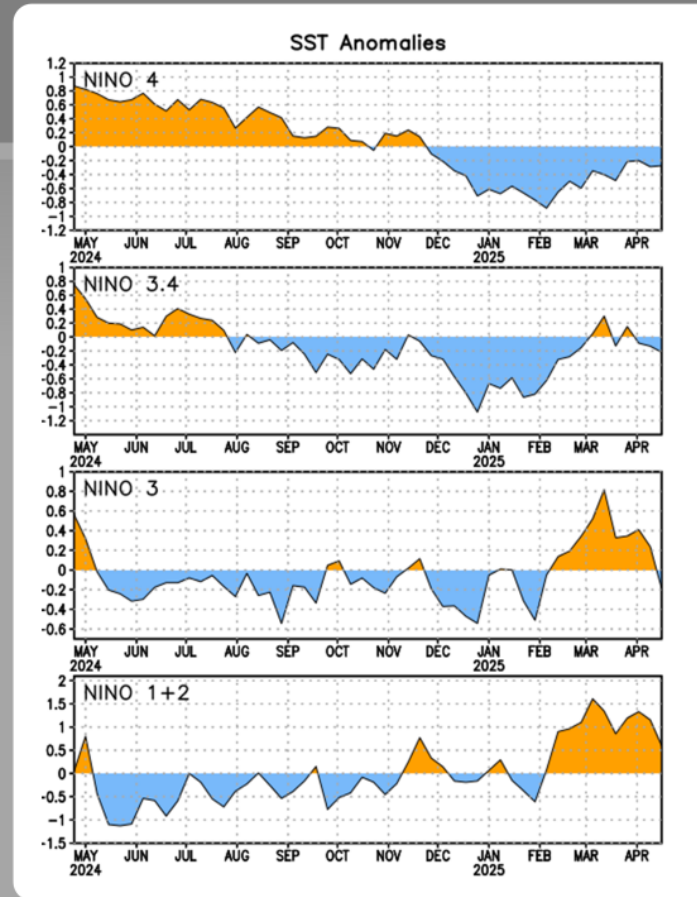
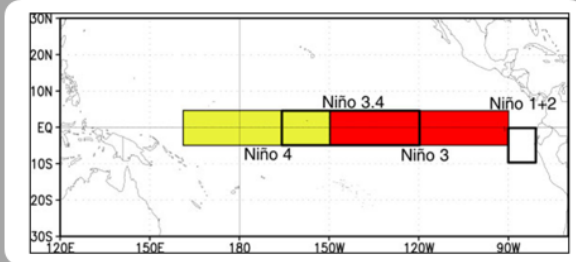


Conditions in the Tropical Pacific

Niño Region SST Departures (°C) Recent Evolution

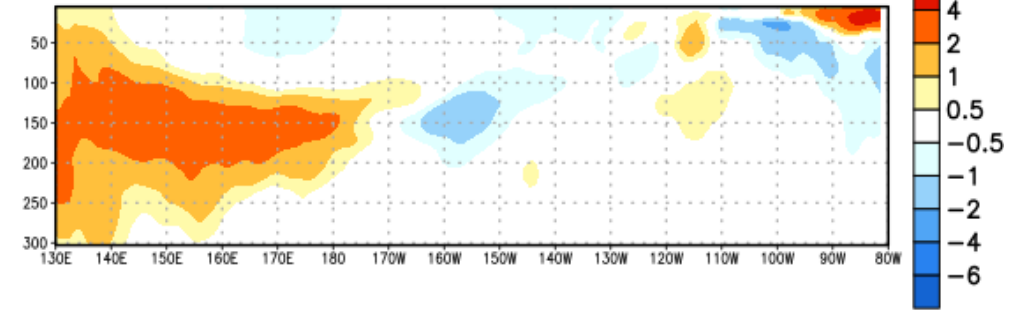
The latest weekly SST departures are:

Niño 4	-0.3°C
Niño 3.4	-0.2°C
Niño 3	-0.2°C
Niño 1+2	0.6°C



EQ. Subsurface Temperature Anomalies (deg C)

Pentad centered on 13 APR 2025



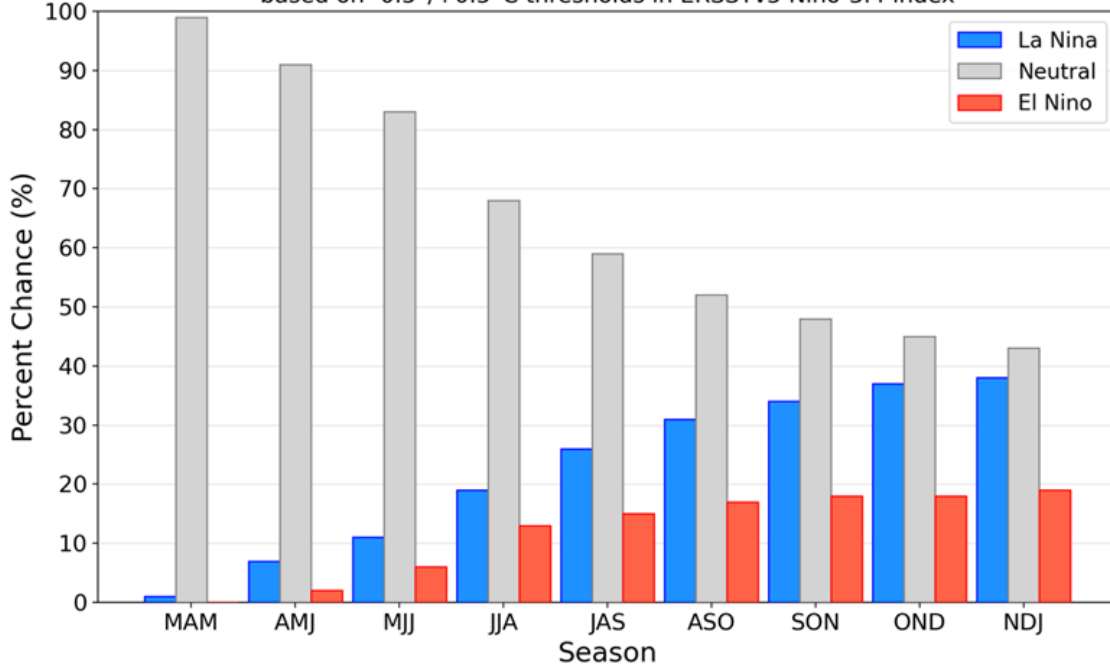
Most recent pentad analysis

- Over the last couple of months, negative *subsurface temperature anomalies have weakened* in the central and eastern equatorial Pacific Ocean.
- Below-average subsurface temperatures continue to prevail in the central and eastern Pacific Ocean
- Above-average temperatures remain in the western Pacific, at depth near the Date Line, and in a shallow layer near the surface in the eastern Pacific Ocean.

What are the chances?

Official NOAA CPC ENSO Probabilities (issued April 2025)

based on $-0.5^{\circ}\text{C}/+0.5^{\circ}\text{C}$ thresholds in ERSSTv5 Niño-3.4 index



- ENSO-neutral is favored to persist through the Northern Hemisphere until the end of 2025.
- During November-December-January 2025-26, ENSO-neutral is slightly favored over the possible return of La Niña.

ENSO Strength Outlook

Target	$\leq -2.0^{\circ}\text{C}$	$\leq -1.5^{\circ}\text{C}$	$\leq -1.0^{\circ}\text{C}$	$\leq -0.5^{\circ}\text{C}$	$-0.5^{\circ}\text{C} \geq \& \leq 0.5^{\circ}\text{C}$	$\geq 0.5^{\circ}\text{C}$	$\geq 1.0^{\circ}\text{C}$	$\geq 1.5^{\circ}\text{C}$	$\geq 2.0^{\circ}\text{C}$
MAM	~0	~0	~0	1	99	~0	~0	~0	~0
AMJ	~0	~0	~0	7	91	2	~0	~0	~0
MJJ	~0	~0	~0	11	83	6	~0	~0	~0
JJA	~0	~0	2	19	65	13	1	~0	~0
JAS	~0	1	6	26	49	15	3	~0	~0
ASO	~0	2	10	31	36	17	4	~0	~0
SON	~0	3	13	34	26	18	5	1	~0
OND	1	4	15	37	18	18	6	1	~0
NDJ	1	5	16	38	14	19	6	1	~0

This table shows the forecast probability (%) of Niño-3.4 index exceeding a certain threshold (in degrees Celsius)

- Most climate models predict a cool ENSO neutral condition.

ENSO Alert System Status:



- ENSO-neutral conditions are present with near-to-below average sea surface temperature anomalies across the central and eastern equatorial Pacific.
- Most climate models suggests that ENSO-neutral conditions are likely to persist until end of 2025.

Updated: 21 April 2025



#BantayKlima

Climate Outlook

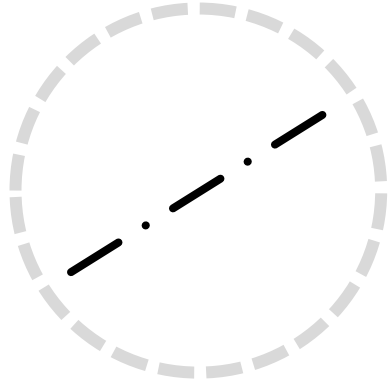
(Rainfall, Temperature, Tropical Cyclone)



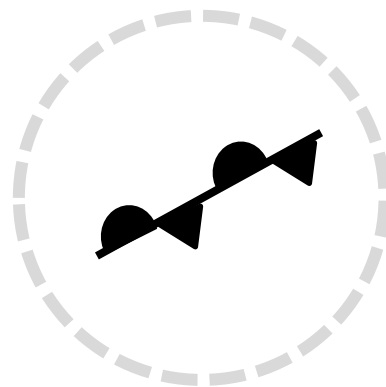
Weather systems that may affect the country (MAY 2025 – OCTOBER 2025)



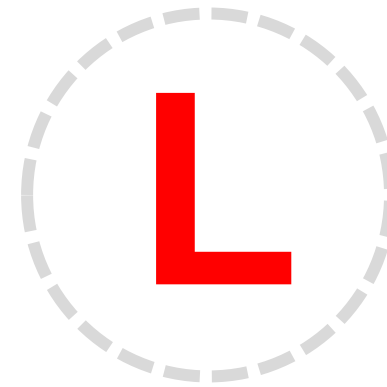
EASTERLIES



SHEAR LINE



FRONTAL SYSTEM



LOW PRESSURE AREA (LPA)



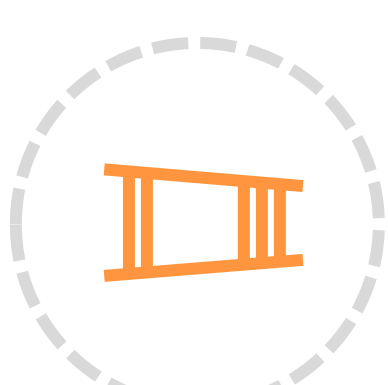
TROPICAL CYCLONES (TCs)



LOCALIZED THUNDERSTORMS



RIDGE OF HIGH PRESSURE AREA (HPA)

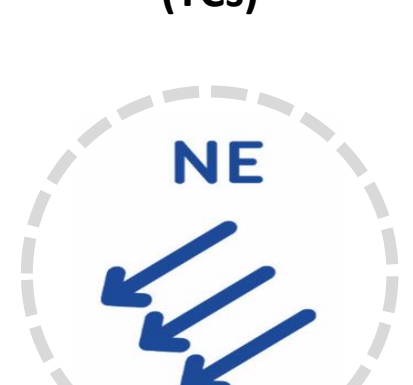


INTERTROPICAL CONVERGENCE ZONE (ITCZ)



SOUTHWEST MONSOON

Transition towards SW Monsoon (May – June)



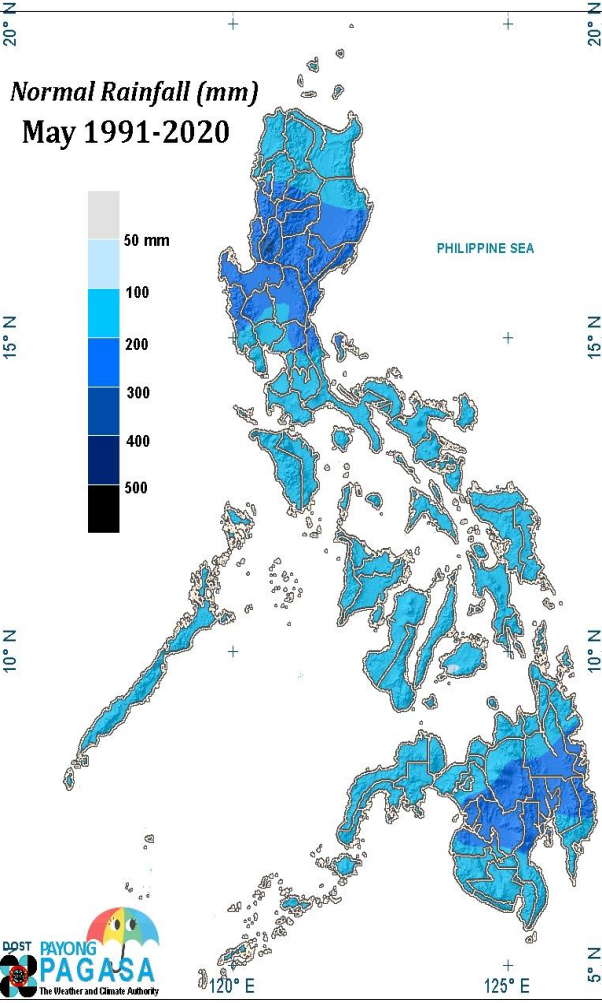
NORTHEAST MONSOON

Transition towards NE Monsoon (October)

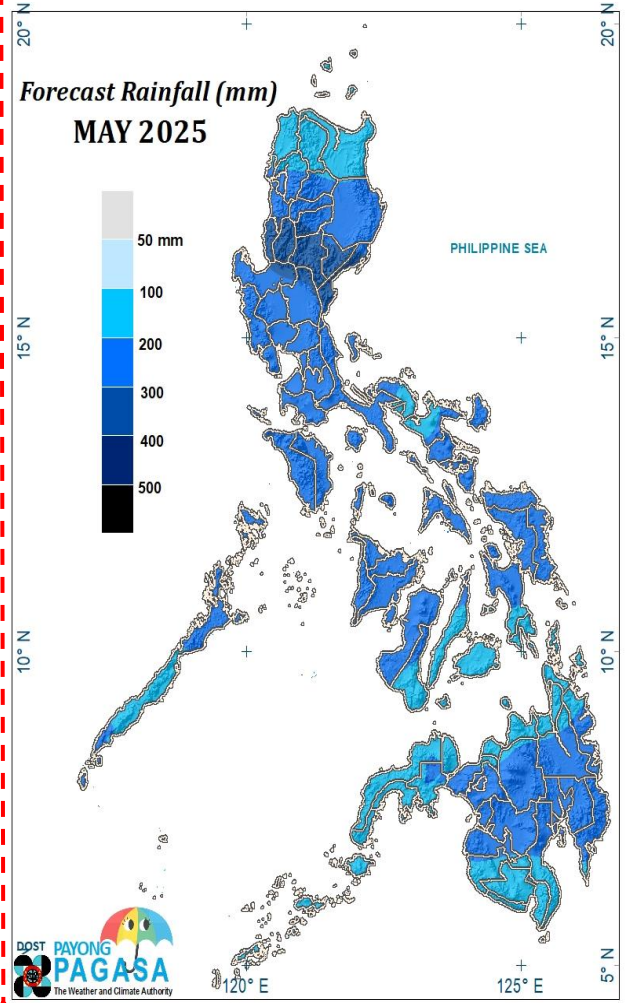
MONTHLY RAINFALL FORECAST

MAY 2025

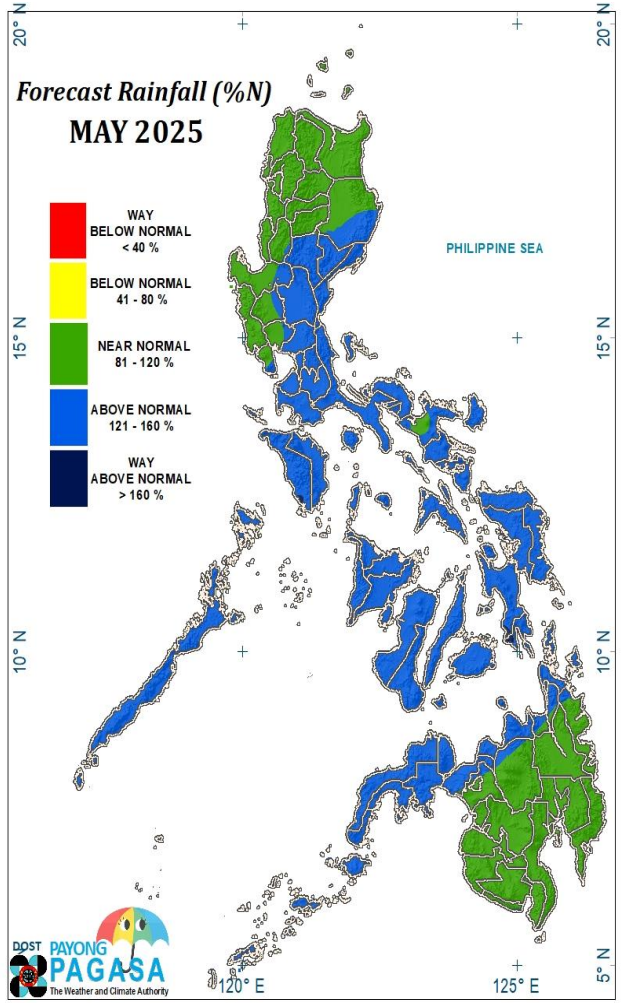
Normal Rainfall



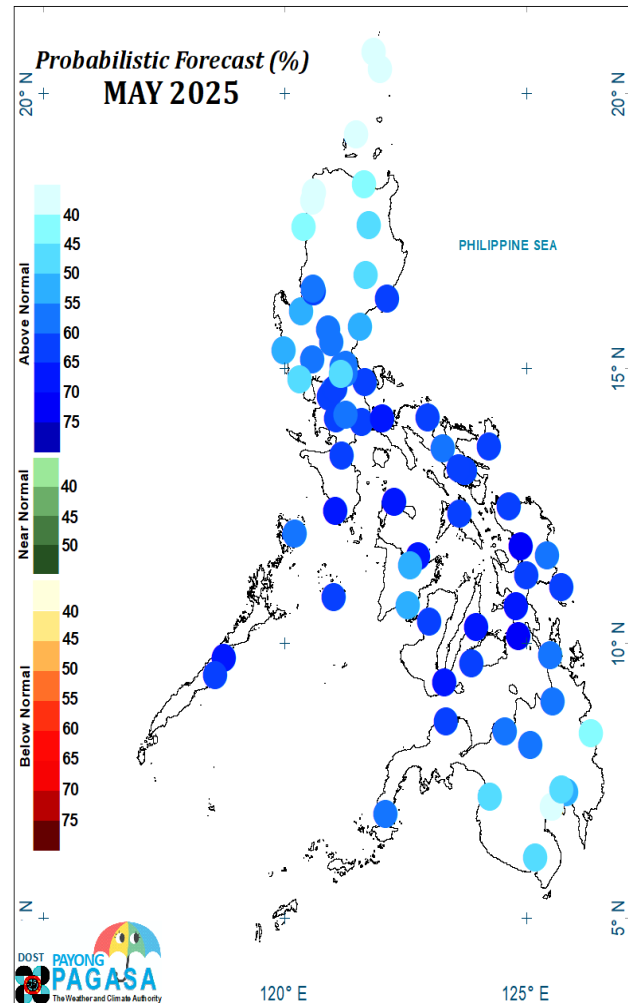
Forecast Rainfall



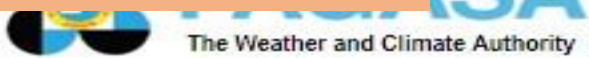
Percent of Normal



Probabilistic Forecast



Issued: 21 April 2025

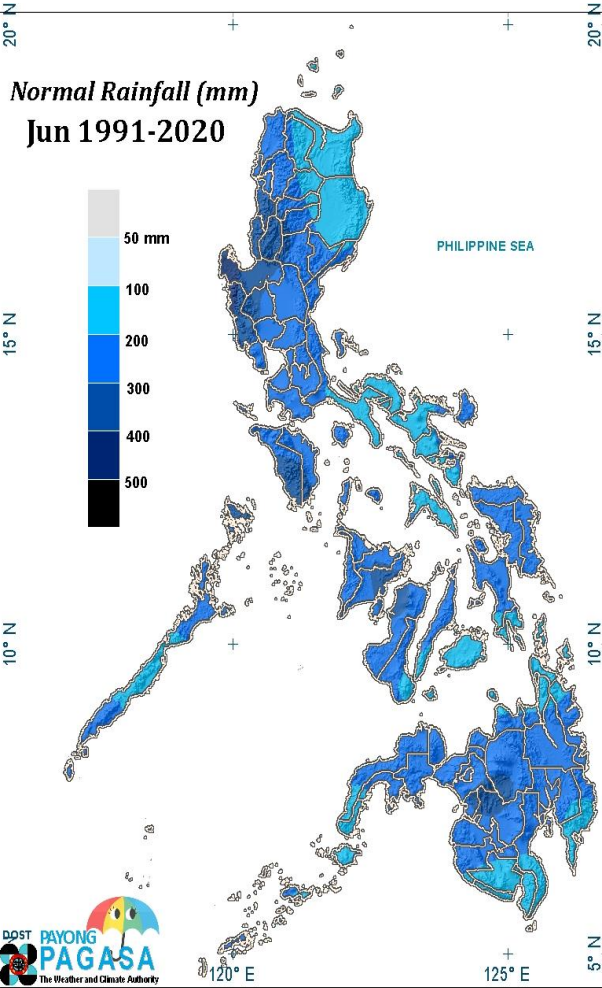


way below normal	below normal	near normal	above normal
0	0	32	52

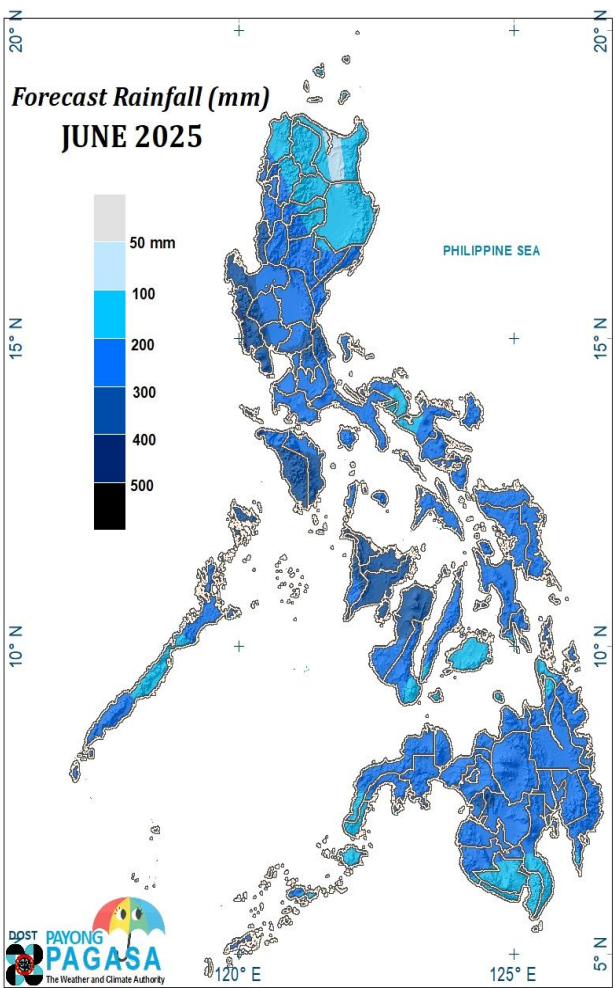
MONTHLY RAINFALL FORECAST

JUNE 2025

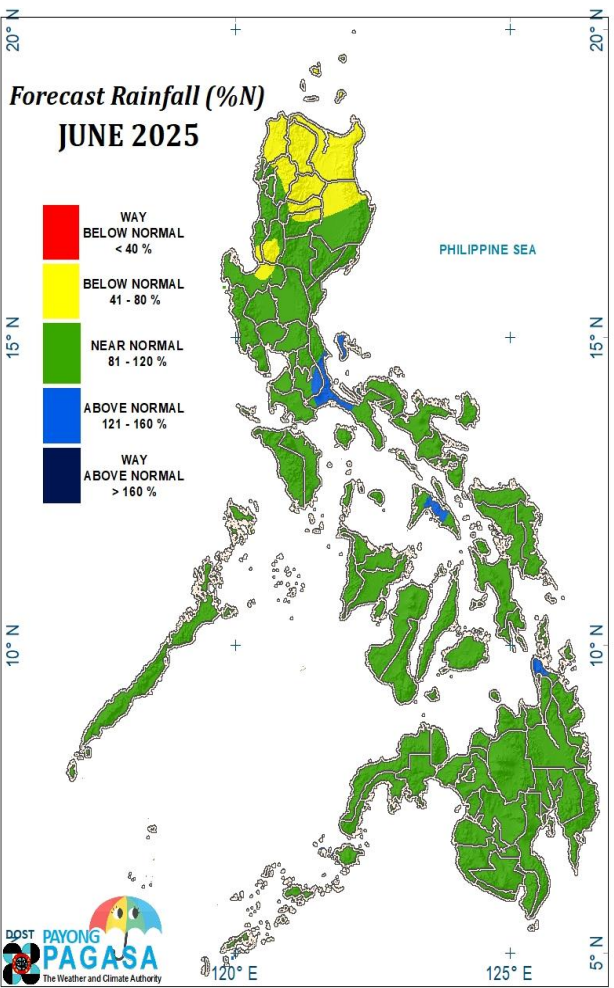
Normal Rainfall



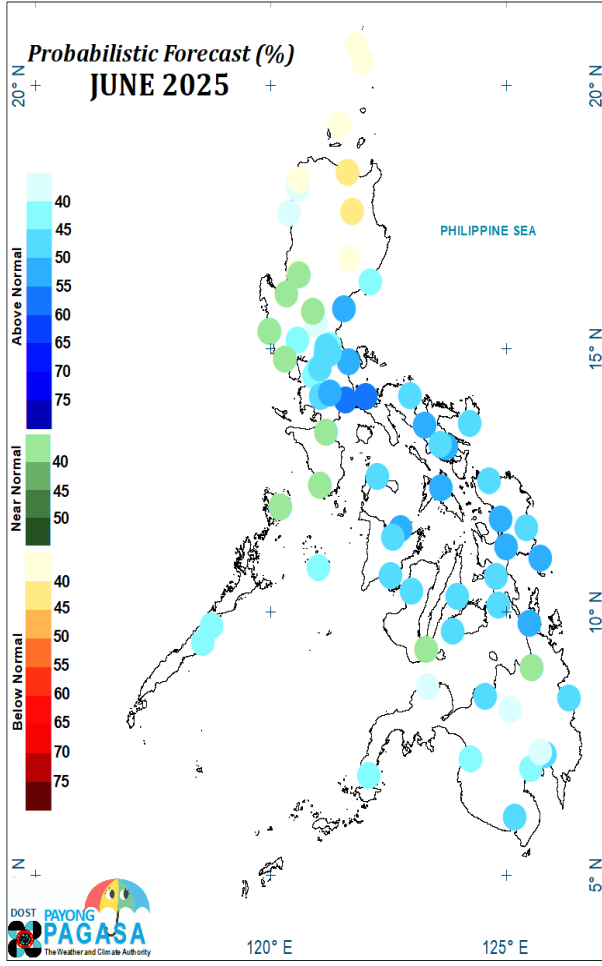
Forecast Rainfall



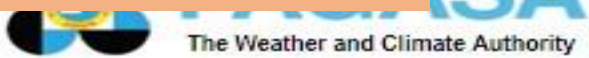
Percent of Normal



Probabilistic Forecast



Issued: 21 April 2025

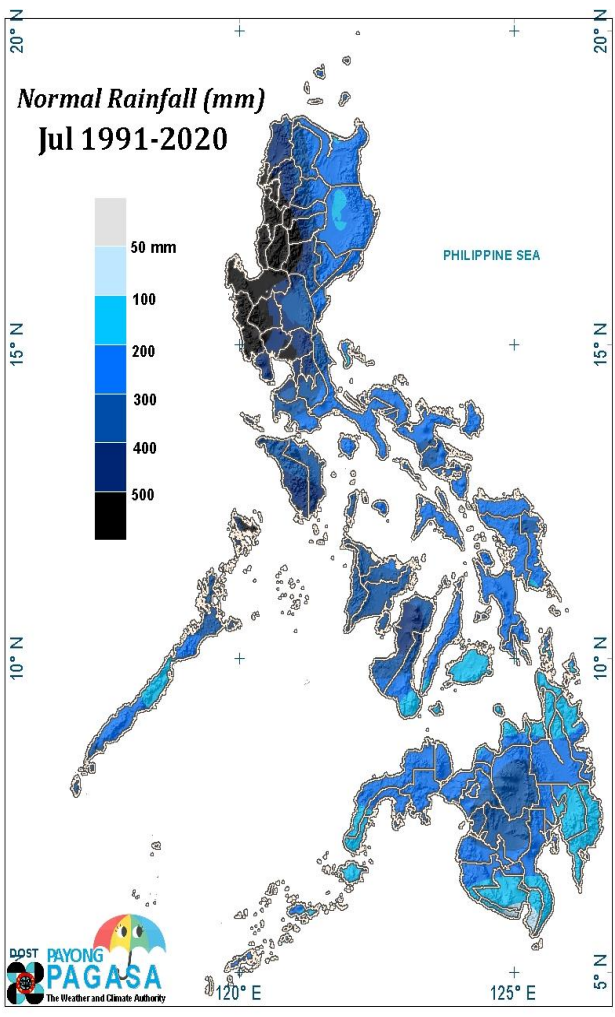


way below normal	below normal	near normal	above normal
0	8	76	0

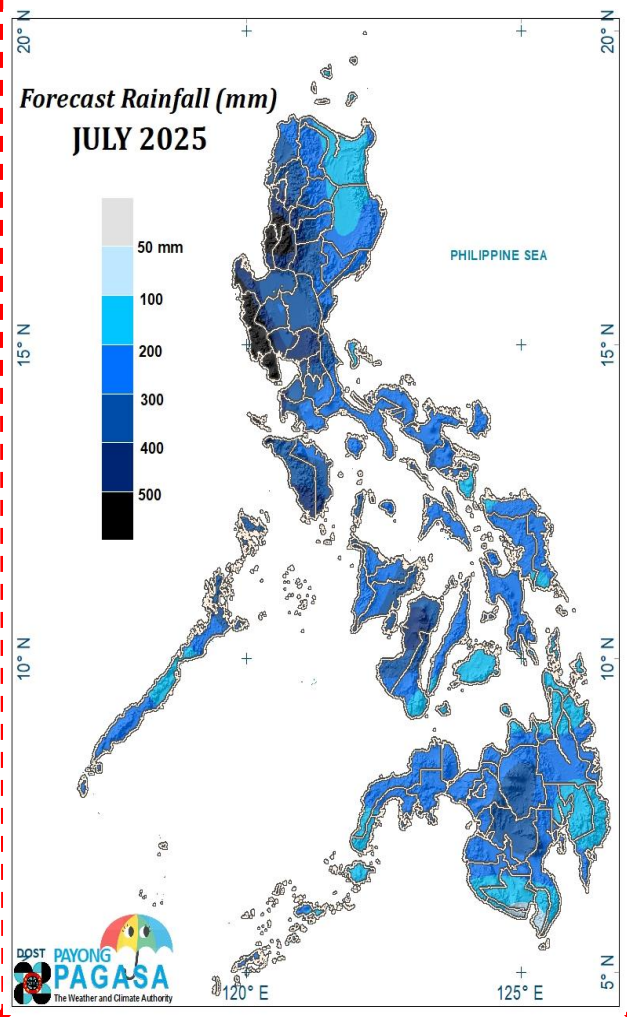
MONTHLY RAINFALL FORECAST

JULY 2025

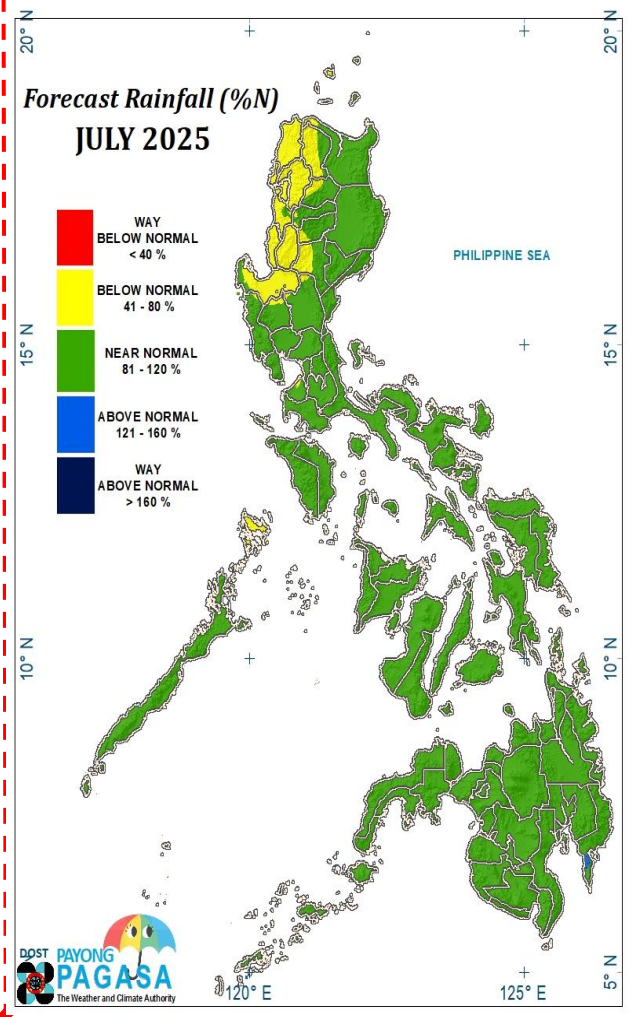
Normal Rainfall



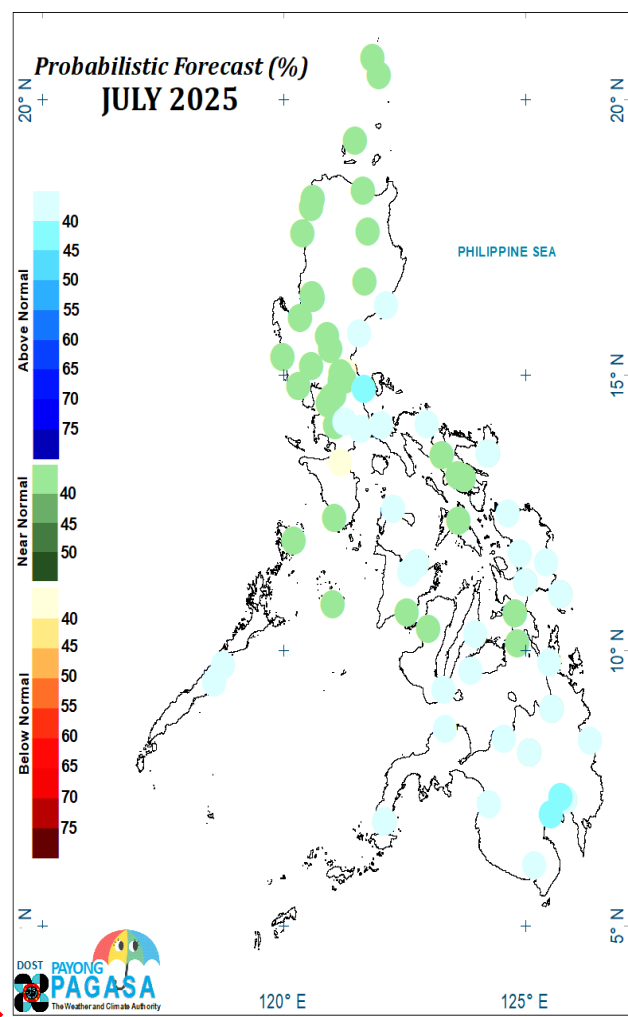
Forecast Rainfall



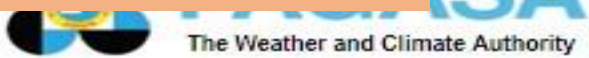
Percent of Normal



Probabilistic Forecast



Issued: 21 April 2025

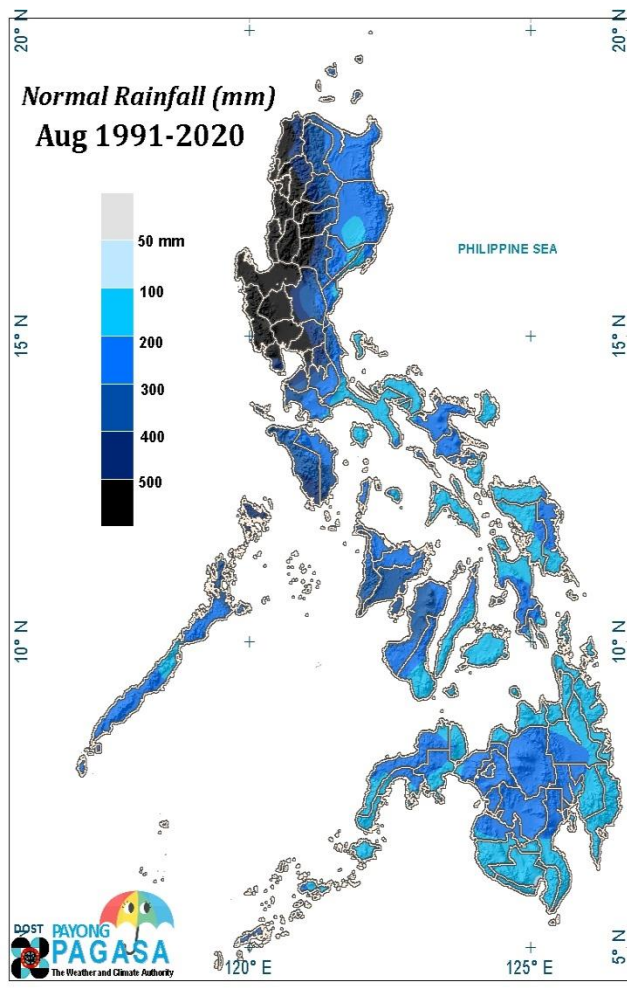


way below normal	below normal	near normal	above normal
0	9	75	0

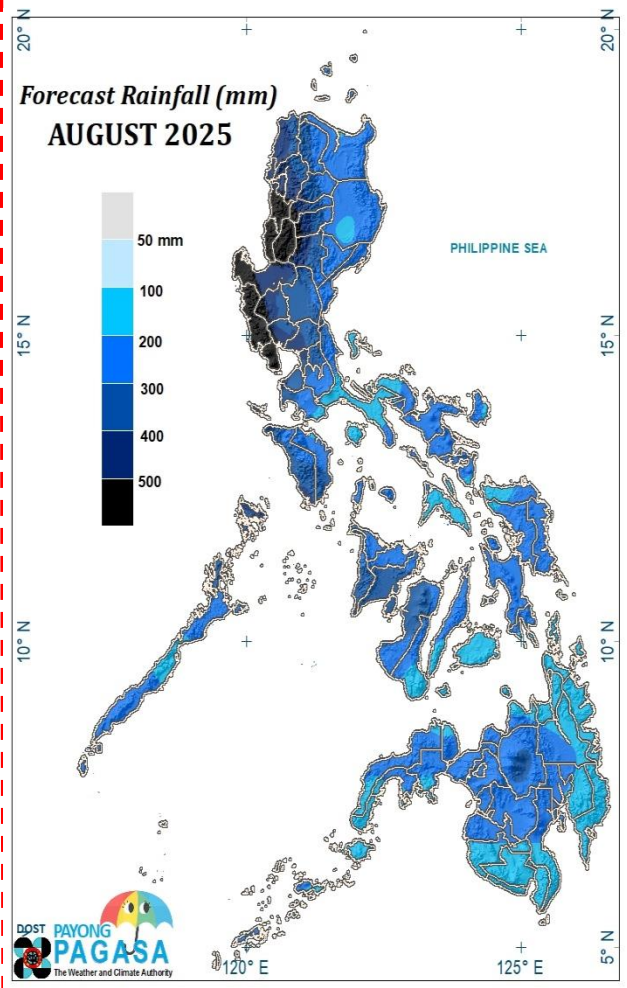
MONTHLY RAINFALL FORECAST

AUGUST 2025

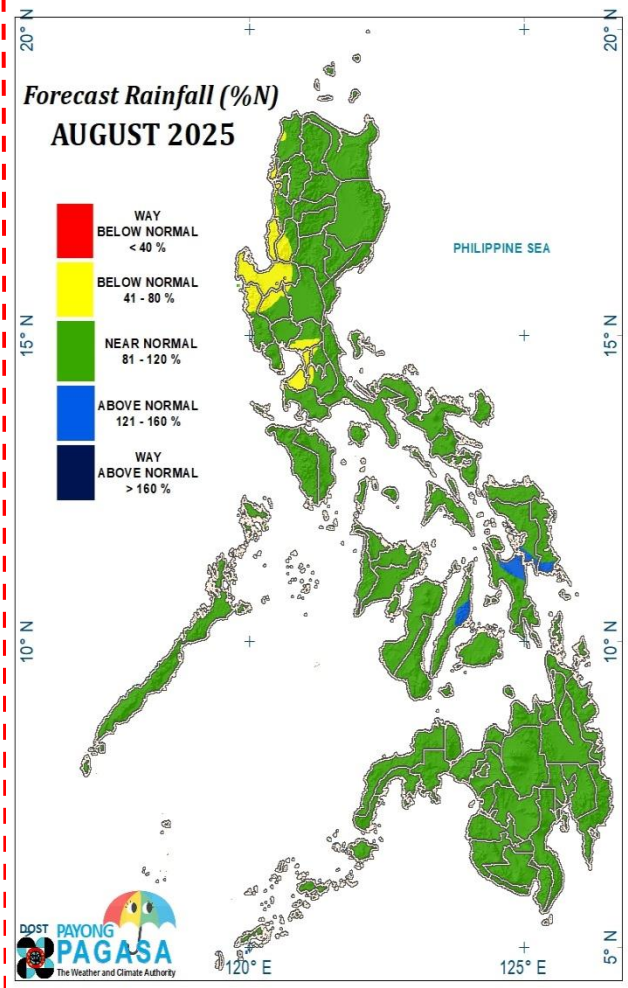
Normal Rainfall



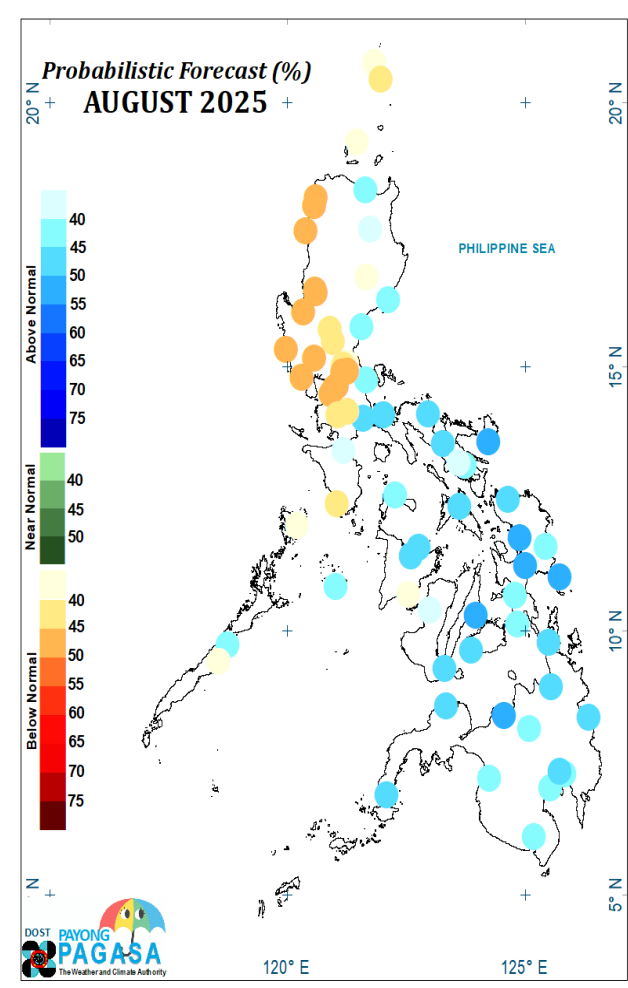
Forecast Rainfall



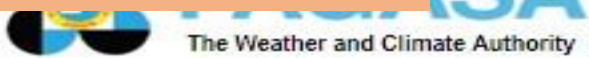
Percent of Normal



Probabilistic Forecast



Issued: 21 April 2025

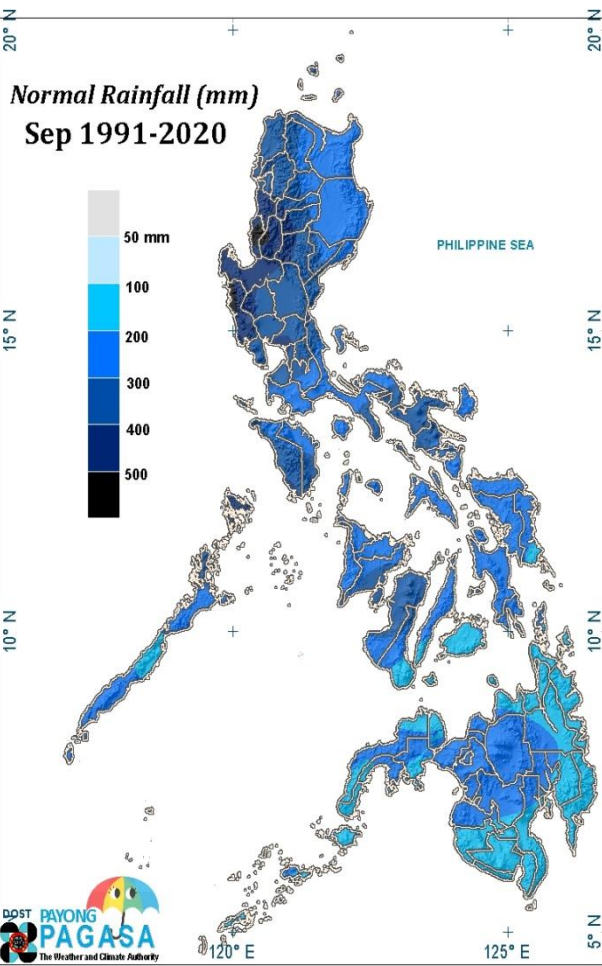


way below normal	below normal	near normal	above normal
0	8	76	0

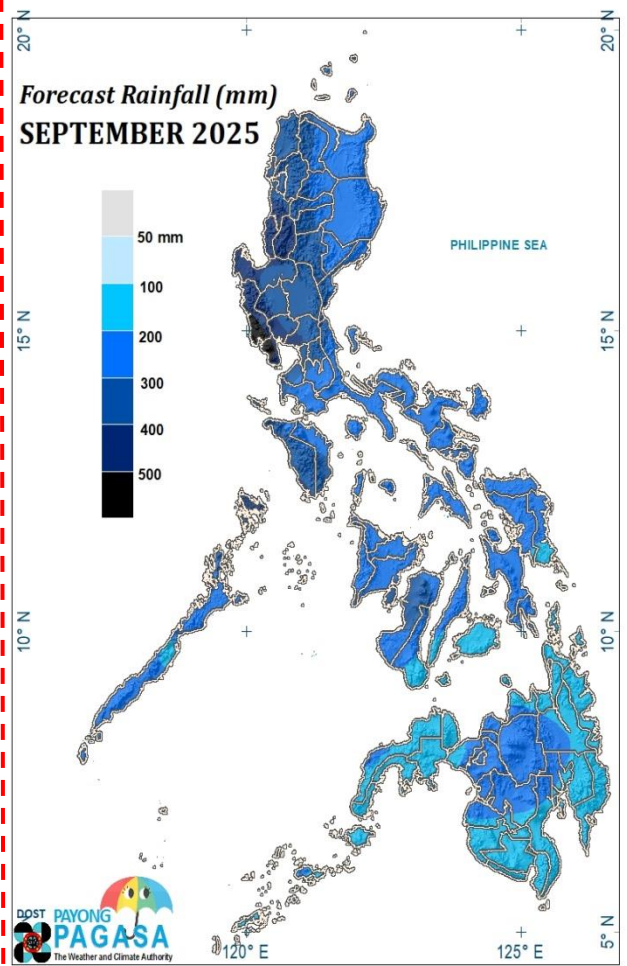
MONTHLY RAINFALL FORECAST

SEPTEMBER 2025

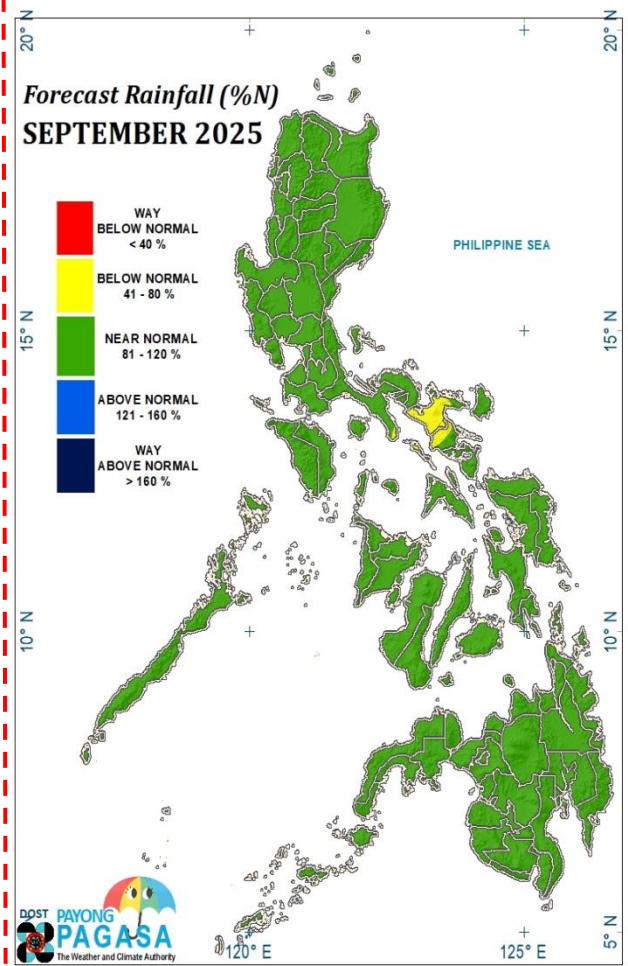
Normal Rainfall



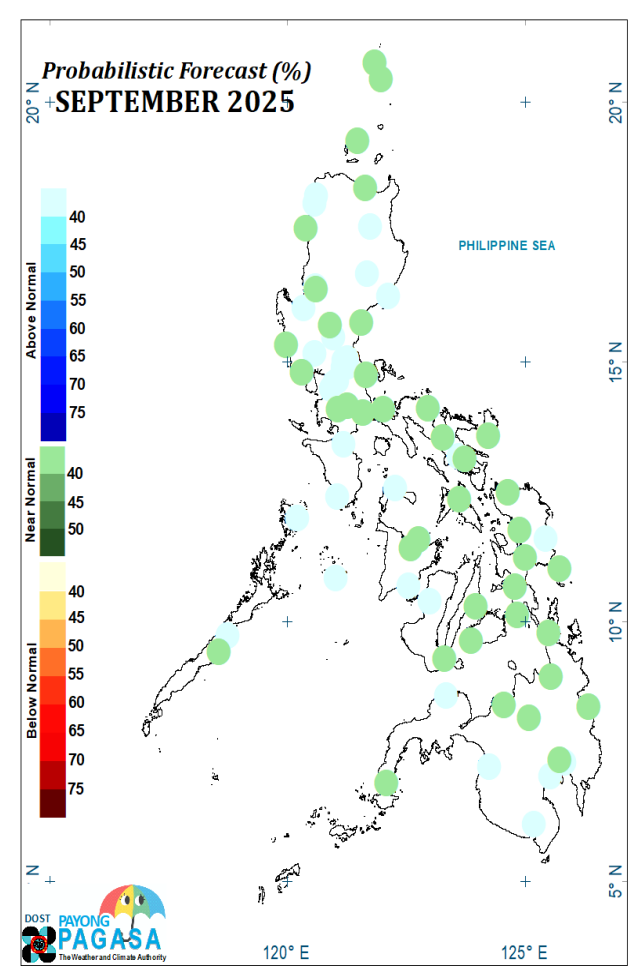
Forecast Rainfall



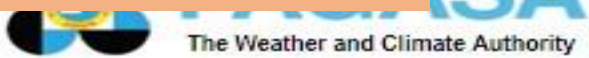
Percent of Normal



Probabilistic Forecast



Issued: 21 April 2025



way below normal	below normal	near normal	above normal
0	1	83	0

MONTHLY RAINFALL FORECAST

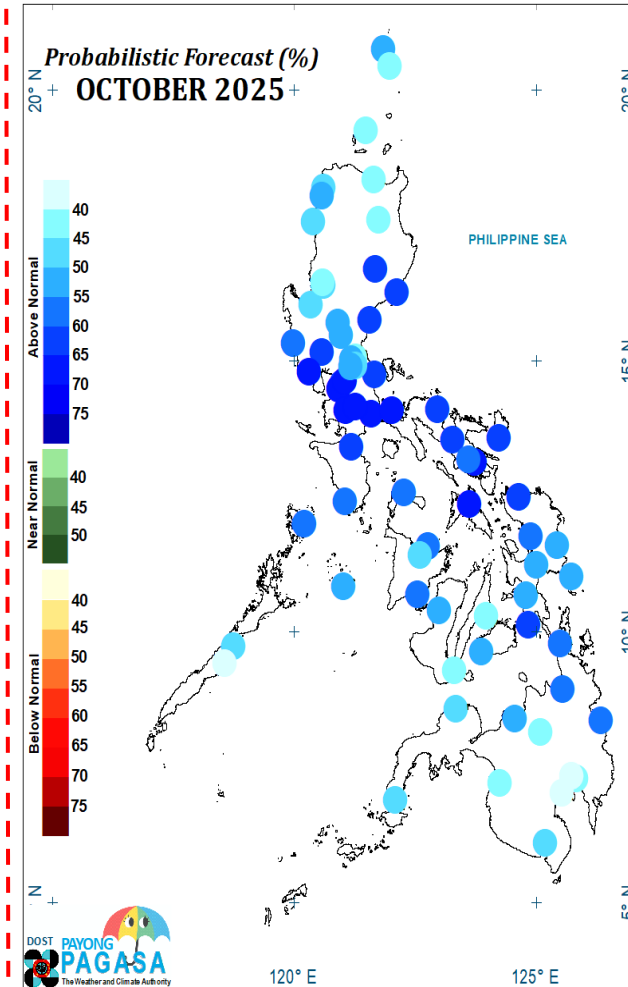
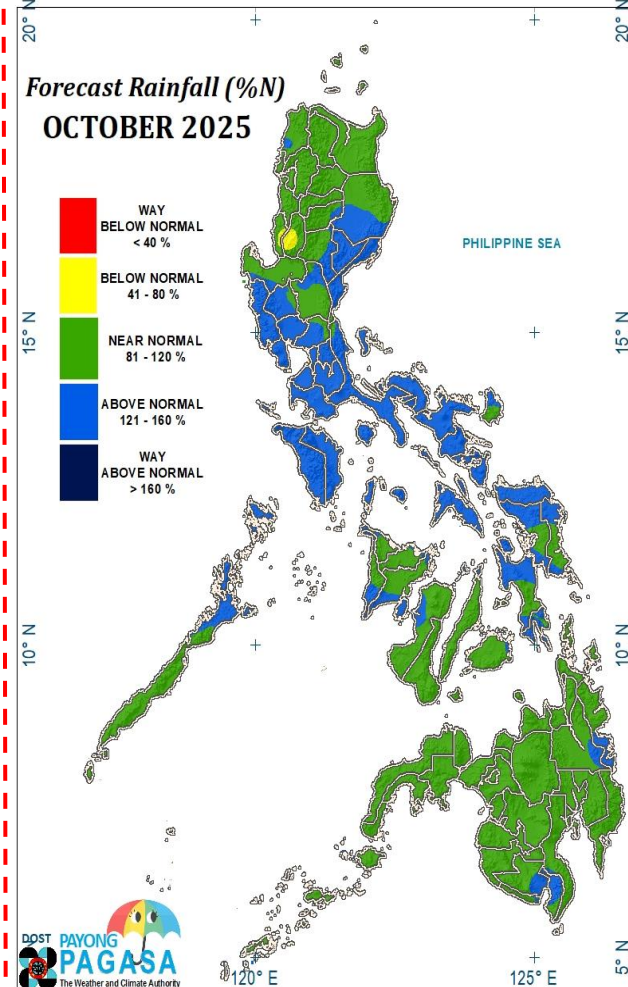
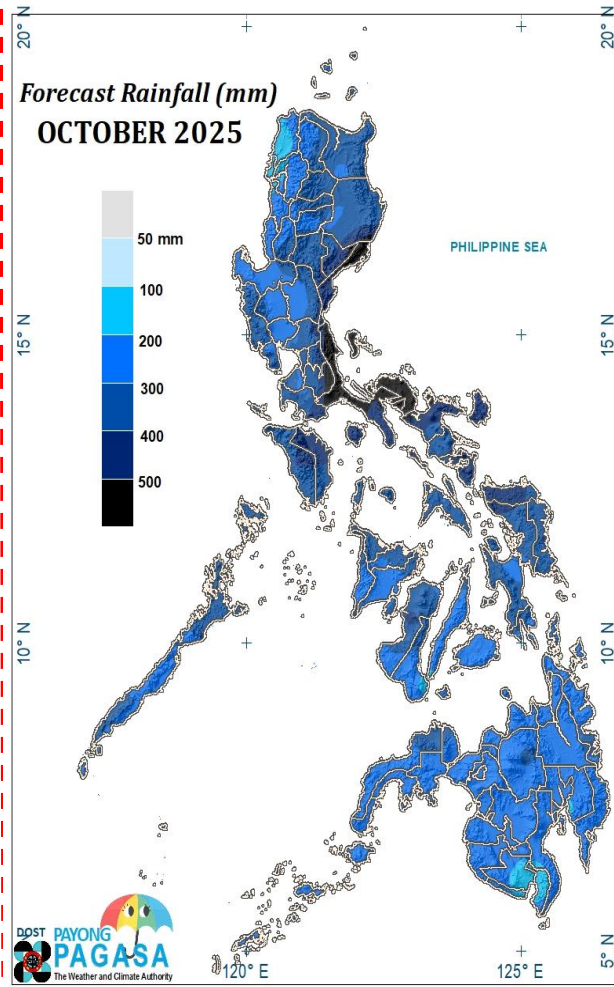
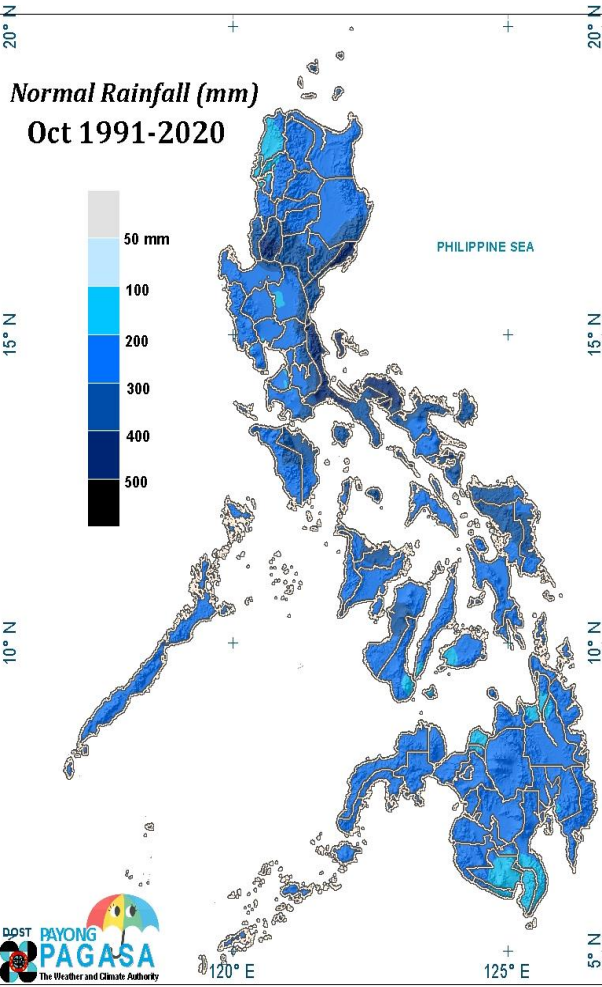
OCTOBER 2025

Normal Rainfall

Forecast Rainfall

Percent of Normal

Probabilistic Forecast



way below normal	below normal	near normal	above normal
0	0	54	30

Issued: 21 April 2025

FORECAST RAINFALL in Percent of Normal (May - October 2025) as of 21 Apr 2025

PROVINCE	MAY	JUN	JUL	AUG	SEP	OCT	PROVINCE	MAY	JUN	JUL	AUG	SEP	OCT	PROVINCE	MAY	JUN	JUL	AUG	SEP	OCT
CORDILLERA ADMINISTRATIVE REGION (CAR)							REGION IV-B (MIMAROPA)							REGION IX (ZAMBOANGA PENINSULA)						
ABRA	108.5	79.7	77.1	82.9	99.5	107.4	MARINDUQUE	140.1	115.1	96.1	103.5	94.7	136.2	ZAMBOANGA DEL NORTE	129.2	102.9	101.8	101.9	95.1	114.7
BENGUET	118.3	80.3	73.9	79.8	87.2	83.7	OCCIDENTAL MINDORO	149.0	102.7	94.2	90.1	100.6	134.6	ZAMBOANGA DEL SUR	126.7	104.3	100.8	102.4	96.0	111.8
IFUGAO	117.7	80.3	83.1	90.2	86.6	113.0	OCCIDENTAL MINDORO	148.4	106.4	94.4	93.4	100.3	134.1	ZAMBOANGA SIBUGAY	127.8	104.3	100.5	102.2	96.6	111.8
KALINGA	112.8	73.1	80.5	90.2	94.5	109.9	ROMBLON	143.2	109.9	94.3	103.2	87.8	128.5	REGION X (NORTHERN MINDANAO)						
APAYAO	102.8	68.9	78.9	84.5	100.9	107.5	PALAWAN	143.2	103.9	93.1	95.7	102.8	119.8	BUKIDNON	115.2	96.3	94.0	106.8	101.1	111.1
MOUNTAIN PROVINCE	115.5	78.1	81.7	88.4	90.0	110.9	SPRATLY ISLANDS	136.4	101.4	90.5	89.9	100.9	132.8	CAMIGUIN	135.8	113.3	103.9	112.4	99.5	114.4
REGION I							REGION V (BICOL)							LANAO DEL NORTE	122.6	103.0	100.0	110.3	96.2	111.2
ILOCOS NORTE	97.2	71.8	71.2	81.4	97.7	109.0	ALBAY	134.6	112.4	94.2	103.0	81.8	129.8	MISAMIS OCCIDENTAL	127.9	102.7	102.9	106.2	92.8	113.5
ILOCOS SUR	113.4	85.5	78.1	80.2	96.0	98.5	CAMARINES NORTE	127.7	110.5	100.6	116.1	95.2	133.0	MISAMIS ORIENTAL	125.6	105.1	105.0	115.5	101.6	113.5
LA UNION	116.2	81.3	74.1	76.7	87.7	85.5	CAMARINES SUR	122.9	108.7	98.8	112.1	78.9	139.8	REGION XI (DAVAO REGION)						
PANGASINAN	117.3	83.1	75.7	75.7	92.6	112.9	CATANDUANES	136.0	116.5	108.4	110.5	90.9	119.9	DAVAO DE ORO	114.2	103.5	98.5	102.3	94.4	107.9
REGION II							MASBATE	146.6	118.6	105.1	107.5	96.0	132.0	DAVAO CITY	107.2	96.6	98.2	103.5	96.4	103.9
BATANES	88.8	81.4	73.9	88.7	94.4	117.1	SORSOGON	139.7	116.2	84.7	103.8	95.9	135.8	DAVAO DEL NORTE	111.6	98.0	90.0	100.9	96.0	103.0
CAGAYAN	107.4	70.5	82.9	89.0	100.5	107.0	REGION VI (WESTERN VISAYAS)							DAVAO DEL SUR	109.5	99.3	111.9	107.0	95.9	114.2
ISABELA	119.5	83.5	89.0	100.5	91.8	119.3	AKLAN	140.8	105.9	88.3	102.7	93.0	114.1	DAVAO OCCIDENTAL	115.2	102.9	107.0	107.0	94.6	117.3
NUEVA VIZCAYA	122.3	87.9	81.3	91.4	90.2	113.7	ANTIQUE	135.2	105.9	87.8	99.3	94.0	119.4	DAVAO ORIENTAL	115.4	106.3	111.0	105.1	94.3	113.7
QUIRINO	123.6	98.5	92.7	104.5	92.0	127.8	CAPIZ	140.8	107.4	96.5	104.7	92.8	107.0	REGION XII (SOCCSKSARGEN)						
REGION III (CENTRAL LUZON)							GUIMARAS	127.6	109.3	94.3	96.3	90.4	122.6	SOUTH COTABATO	116.8	101.9	100.1	106.6	94.5	117.3
BATAAN	115.8	90.2	85.2	82.7	94.2	137.2	ILOILO	134.2	108.1	94.5	100.9	91.9	115.6	COTABATO	110.2	97.0	97.2	105.3	97.5	110.2
BULACAN	126.7	101.4	93.9	84.9	98.6	124.4	NEGROS OCCIDENTAL	139.8	108.2	99.4	103.5	94.1	118.0	SARANGANI	117.7	103.1	100.2	106.6	94.0	119.1
NUEVA ECIJA	128.1	92.8	90.1	91.7	99.9	117.0	REGION VII (CENTRAL VISAYAS)							SULTAN KUDARAT	115.3	101.7	99.2	106.2	95.9	111.8
PAMPANGA	117.5	91.1	88.6	83.4	97.0	129.8	NEGROS ORIENTAL	144.6	102.0	101.2	106.2	97.6	110.1	REGION XIII- CARAGA						
TARLAC	117.6	86.0	83.7	80.7	96.2	126.2	BOHOL	154.2	112.2	102.5	111.8	94.3	117.2	AGUSAN DEL NORTE	120.8	111.6	105.0	112.8	101.4	115.6
ZAMBALES	111.3	89.7	87.3	80.8	93.0	137.7	CEBU	152.8	108.9	103.0	116.9	93.4	113.3	AGUSAN DEL SUR	116.2	104.1	100.4	103.6	100.8	116.3
AURORA	126.3	106.6	97.4	109.0	96.9	129.9	SIQUIJOR	146.2	102.1	102.0	108.9	95.2	107.0	DINAGAT ISLANDS	131.9	117.0	93.4	115.5	96.2	117.4
NATIONAL CAPITAL REGION							REGION VIII (EASTERN VISAYAS)							SURIGAO DEL NORTE	122.8	119.5	95.8	112.5	98.2	116.2
METRO MANILA	134.0	105.5	84.5	77.6	93.9	134.4	BILIRAN	151.3	113.0	100.9	116.9	95.1	123.9	SURIGAO DEL SUR	118.0	111.8	105.6	105.6	100.0	118.8
REGION IV-A (CALABARZON)							EASTERN SAMAR	139.6	116.6	92.3	108.4	97.6	120.4	BARMM						
BATANGAS	140.8	107.9	93.4	85.6	90.4	142.9	LEYTE	151.8	109.9	98.5	115.6	93.6	120.6	BASILAN	130.4	107.4	101.6	100.0	102.8	112.8
CAVITE	140.4	103.0	82.9	77.6	88.3	149.1	NORTHERN SAMAR	134.9	115.2	92.0	95.6	98.5	138.8	MAGUINDANAO	112.8	100.7	95.9	106.2	96.4	107.1
LAGUNA	138.8	117.5	91.0	87.5	88.5	142.3	SAMAR (WESTERN SAMAR)	143.8	115.5	94.0	109.4	97.7	124.4	LANAO DEL SUR	117.5	100.3	96.8	109.5	98.0	110.6
RIZAL	132.5	113.4	92.7	83.7	92.7	129.3	SOUTHERN LEYTE	152.9	112.9	95.7	105.4	97.9	122.2	SULU	131.3	104.1	99.2	103.3	99.5	110.9
QUEZON	135.6	118.4	100.3	105.3	91.8	133.4								TAWI-TAWI	131.3	102.8	99.6	103.7	100.4	112.6



PROVINCE	MAY			JUNE			JULY			AUGUST			SEPTEMBER			OCTOBER		
CORDILLERA ADMINISTRATIVE REGION	MIN	MAX	MEAN	MIN	MAX	MEAN	MIN	MAX	MEAN	MIN	MAX	MEAN	MIN	MAX	MEAN	MIN	MAX	MEAN
ABRA	172.1	264.9	210.5	148.7	255.0	203.3	271.7	460.2	360.6	327.4	532.1	427.2	305.6	390.5	356.4	148.1	309.9	238.1
BENGUET	297.6	380.0	344.1	255.5	307.5	279.7	410.9	573.5	499.9	509.7	752.4	626.3	387.4	445.1	420.6	255.8	361.4	302.5
IFUGAO	245.7	331.7	285.2	130.3	265.7	196.9	194.3	475.4	328.7	232.6	563.8	389.6	230.4	398.7	309.2	290.2	322.2	300.8
KALINGA	186.0	250.3	215.7	101.5	212.1	142.2	167.9	384.4	250.1	218.6	456.5	314.1	225.7	348.0	276.0	277.8	312.0	306.1
APAYAO	148.3	197.0	165.7	102.1	163.7	129.3	181.7	296.9	234.0	224.4	364.8	298.1	257.4	341.1	302.3	228.0	314.4	289.5
MOUNTAIN PROVINCE	224.2	307.9	260.3	116.6	261.6	189.5	188.0	489.5	334.6	248.2	562.6	405.7	229.4	396.1	313.1	281.8	310.3	301.8
REGION I																		
ILOCOS NORTE	157.8	197.7	166.0	137.7	222.9	175.2	231.6	379.0	305.7	335.9	458.7	403.3	323.7	382.0	357.4	121.7	282.7	188.7
ILOCOS SUR	179.4	343.0	259.7	210.5	301.1	262.0	359.6	575.2	470.3	426.3	686.9	541.5	364.4	439.1	400.2	122.8	291.4	219.0
LA UNION	298.2	359.1	331.6	289.8	319.2	305.7	424.5	574.5	523.2	540.1	716.0	653.5	421.4	446.2	436.9	249.2	305.9	265.1
PANGASINAN	267.0	335.8	291.7	223.1	398.0	304.1	318.9	592.3	413.7	359.0	615.4	491.6	353.9	459.0	404.4	237.6	355.4	286.3
REGION II																		
BATANES	187.1	197.4	188.9	149.7	172.4	158.6	167.0	240.0	188.9	292.1	337.7	308.6	313.4	318.5	316.0	331.2	363.8	355.4
CAGAYAN	141.3	204.5	170.1	96.3	148.1	106.5	155.7	245.2	181.7	185.9	346.4	231.4	225.6	329.4	261.2	264.4	326.5	307.4
ISABELA	195.1	301.3	248.1	98.9	206.1	142.0	161.8	286.8	209.0	179.0	326.2	228.3	215.5	283.6	237.8	296.3	538.4	340.0
NUEVA VIZCAYA	287.1	350.0	322.5	184.6	269.1	235.2	265.3	471.7	348.8	233.3	568.8	388.6	275.8	412.1	344.9	297.7	451.5	360.6
QUIRINO	288.2	325.9	310.7	175.4	244.5	214.2	231.8	306.4	260.3	206.8	322.7	242.6	249.0	318.8	276.7	315.0	559.3	423.7
REGION III																		
BATAAN	234.1	258.5	248.7	0.1	376.7	327.6	489.2	761.6	599.4	485.2	745.7	607.8	436.8	555.3	505.7	287.6	349.6	306.1
BULACAN	243.1	279.7	261.2	11.2	313.7	295.7	364.6	486.6	433.7	330.6	508.3	395.5	336.3	468.3	382.4	289.6	487.5	348.8
NUEVA ECJA	244.9	323.0	281.3	25.6	296.3	242.7	292.5	415.0	331.1	262.9	434.9	340.5	317.4	381.0	341.9	211.6	459.9	305.9
PAMPANGA	236.1	256.4	245.1	4.5	343.5	289.4	326.5	569.1	429.4	360.5	574.0	433.0	351.6	483.7	410.2	248.3	309.4	277.5
TARLAC	239.0	286.4	256.1	223.7	378.2	284.9	283.8	607.6	386.8	358.2	653.2	449.4	334.3	465.3	378.8	224.2	353.0	274.6
ZAMBALES	248.1	286.5	265.8	324.4	439.2	382.6	442.9	876.0	645.2	522.3	785.5	663.4	400.6	582.3	487.3	280.7	388.4	329.3
AURORA	278.2	331.4	307.7	196.2	311.0	248.5	250.9	417.3	294.3	199.6	337.6	240.9	254.7	338.5	290.8	392.0	665.9	517.7
NATIONAL CAPITAL REGION																		
METRO MANILA	225.0	254.6	241.4	264.9	304.9	290.0	319.5	434.3	385.1	318.0	447.2	394.9	316.4	419.6	373.2	294.8	362.7	328.0
REGION IV-A																		
BATANGAS	208.1	243.5	225.4	244.8	290.1	255.4	270.0	518.1	314.2	181.8	459.1	264.5	216.7	407.8	253.7	285.2	519.8	370.4
CAVITE	213.8	235.7	226.4	247.9	287.0	264.8	299.3	490.4	354.4	283.8	456.3	357.3	265.8	407.8	333.6	289.0	338.7	306.1
LAGUNA	205.8	243.7	221.6	248.5	290.7	264.2	253.8	373.6	300.5	191.5	370.1	246.6	227.7	350.7	265.3	292.1	618.8	436.9
RIZAL	216.2	271.9	248.2	264.4	314.2	297.8	302.6	435.8	377.8	241.2	416.2	334.3	264.9	379.7	329.2	336.1	539.1	410.7
QUEZON	179.2	286.2	229.6	195.1	316.4	250.0	152.1	416.7	273.2	151.0	337.9	201.8	221.7	340.6	257.2	311.0	680.4	544.3
REGION IV-B																		
MARINDUQUE	217.6	230.7	224.2	234.9	273.8	255.3	249.0	276.7	267.6	173.1	205.5	187.5	238.4	258.5	250.3	449.5	520.7	469.2
OCCIDENTAL MINDORO	240.0	273.8	260.3	278.6	351.0	314.2	296.9	619.0	383.8	243.5	501.2	335.1	253.5	423.2	342.7	327.7	425.2	379.9
OCCIDENTAL MINDORO	242.4	266.3	254.4	269.8	327.8	304.7	270.1	440.7	338.5	184.1	397.3	274.0	229.2	386.2	298.6	344.3	461.6	398.9
ROMBLON	222.1	241.4	230.2	250.5	310.9	279.2	278.1	339.2	301.4	205.6	284.4	242.8	201.4	279.7	230.3	349.4	445.2	389.8
PALAWAN	181.6	275.6	212.9	165.7	326.6	234.8	157.7	405.8	263.9	163.1	422.0	263.3	193.8	439.2	268.4	218.1	388.5	301.4
SPRATLY ISLANDS	234.0	234.5	234.3	293.4	302.0	294.9	386.2	395.9	387.8	382.2	391.6	383.7	349.6	358.8	351.1	313.4	321.9	314.8
REGION V																		
ALBAY	208.1	243.6	227.2	205.0	252.3	220.4	200.2	309.7	278.0	208.9	252.0	244.2	224.7	264.3	248.7	295.9	462.3	372.0
CAMARINES NORTE	190.3	213.1	200.8	190.5	218.5	202.2	215.1	252.7	235.7	160.3	223.7	191.8	253.9	271.9	263.0	517.0	645.4	575.0
CAMARINES SUR	186.7	219.7	198.1	190.3	244.1	203.5	237.4	308.4	271.1	184.9	250.6	231.2	250.1	272.6	266.9	343.6	594.9	469.2
CATANDUANES	215.8	226.1	221.9	239.7	256.6	251.2	245.9	275.1	266.3	196.5	216.5	203.4	233.1	250.2	240.9	426.1	469.6	436.1
MASBATE	206.9	230.5	216.9	205.0	285.2	212.6	191.6	312.9	239.6	180.9	237.9	196.8	209.4	249.1	218.9	289.0	442.7	344.1
SORSOGON	219.4	237.7	227.9	211.6	247.6	226.5	162.1	284.2	198.3	194.6	241.7	214.4	212.9	242.0	223.4	357.6	458.0	423.6

PROVINCE	MAY			JUNE			JULY			AUGUST			SEPTEMBER			OCTOBER		
REGION VI	MIN	MAX	MEAN	MIN	MAX	MEAN	MIN	MAX	MEAN	MIN	MAX	MEAN	MIN	MAX	MEAN	MIN	MAX	MEAN
AKLAN	234.5	243.8	239.5	307.2	316.4	313.4	272.1	340.1	294.6	234.7	298.4	261.7	234.0	294.8	253.4	293.0	378.7	328.8
ANTIQUE	218.4	257.7	229.4	283.4	326.0	301.5	265.2	426.6	285.4	262.3	389.7	321.0	256.0	376.4	271.5	268.3	384.6	301.0
CAPIZ	228.9	242.4	235.7	292.7	328.2	315.2	266.5	323.7	292.8	282.2	307.9	264.6	224.5	267.7	246.6	279.2	378.7	319.0
GUIMARAS	209.4	229.2	217.9	313.4	335.6	326.1	338.4	398.7	362.8	369.6	387.8	381.5	301.1	331.0	313.5	277.2	344.9	304.2
ILOILO	206.0	234.5	223.5	263.1	336.6	317.0	266.4	360.9	305.8	217.1	388.6	325.4	218.6	309.6	272.5	261.5	367.6	288.3
NIR																		
NEGROS OCCIDENTAL	199.5	252.7	222.7	233.6	341.9	303.2	257.6	436.3	375.9	227.4	378.2	307.1	224.7	342.1	299.8	281.0	424.2	332.4
NEGROS ORIENTAL	164.9	237.8	194.3	178.0	324.6	229.9	155.6	430.1	259.2	115.3	334.9	206.6	137.0	329.3	216.9	155.3	392.5	264.9
SIIQUJOR	159.6	169.3	164.0	166.0	174.8	170.5	134.0	148.9	141.5	122.5	134.5	127.9	120.4	126.2	122.7	193.4	236.8	216.2
REGION VII																		
BOHOL	145.2	174.1	156.4	162.5	199.1	176.0	132.2	222.0	163.7	127.3	201.7	161.9	125.3	226.4	163.5	206.7	296.6	248.1
CEBU	165.3	224.0	189.3	177.3	286.6	234.3	156.0	322.1	260.3	126.7	259.9	212.2	141.7	254.7	213.5	175.4	357.8	263.9
REGION VIII																		
BILIRAN	222.7	233.8	229.5	224.9	243.6	236.7	250.7	268.1	263.7	202.6	222.8	215.8	229.8	238.8	234.3	325.9	352.2	341.3
EASTERN SAMAR	187.8	259.0	237.2	221.2	266.3	257.2	191.3	280.9	235.2	193.0	218.3	212.6	166.0	242.1	210.3	296.8	410.1	361.1
LEYTE	172.5	233.6	209.1	196.8	253.5	236.0	194.3	275.6	239.5	201.2	253.1	227.6	200.9	248.0	231.2	260.8	358.1	317.1
NORTHERN SAMAR	208.7	238.3	222.4	212.8	260.1	246.2	160.5	276.0	231.1	188.9	212.3	199.3	210.8	241.6	227.7	353.6	498.5	432.1
SAMAR (WESTERN SAMAR)	211.6	258.6	240.7	215.9	265.1	252.7	191.3	281.1	249.4	192.9	229.0	212.4	190.1	243.0	229.6	266.3	450.4	367.2
SOUTHERN LEYTE	156.1	190.6	175.8	191.0	226.1	207.1	160.1	247.7	217.2	174.7	235.0	210.2	199.1	247.0	233.2	281.3	340.8	306.4
REGION IX																		
ZAMBOANGA DEL NORTE	147.4	200.6	185.3	173.4	261.5	232.3	161.5	274.9	242.6	149.0	239.2	207.7	139.8	222.0	188.3	237.5	362.5	284.4
ZAMBOANGA DEL SUR	138.3	203.0	183.3	169.3	268.5	233.3	156.2	275.0	225.3	130.7	224.0	194.2	171.4	199.0	184.7	226.2	304.0	249.0
ZAMBOANGA SIBUGAY	160.8	192.6	179.4	190.7	250.6	225.9	186.6	258.8	226.8	169.6	223.1	202.3	169.0	197.6	192.5	229.3	260.6	252.7
REGION X																		
BUKIDNON	181.2	240.5	225.3	232.1	296.4	267.4	244.4	337.3	305.1	218.7	316.9	283.3	213.7	276.4	258.2	219.0	315.0	273.2
CAMIGUIN	158.9	163.2	160.8	186.7	194.2	190.1	149.1	166.0	159.5	161.4	172.3	166.7	168.1	175.7	172.3	267.7	282.9	269.8
LANAO DEL NORTE	184.7	213.5	201.7	250.1	281.5	266.4	220.0	275.1	239.1	207.7	263.9	229.5	184.2	246.2	206.0	216.9	247.6	233.2
MISAMIS OCCIDENTAL	186.9	203.1	196.0	217.9	266.7	248.6	214.2	265.4	238.6	179.5	219.5	205.1	154.7	193.5	179.3	244.3	327.0	284.3
MISAMIS ORIENTAL	160.4	197.1	179.3	196.5	260.9	227.5	154.9	271.2	219.3	152.5	256.3	212.0	159.1	241.4	205.7	209.4	268.3	241.0
REGION XI																		
DAVAO DE ORO	216.6	250.7	231.5	204.9	248.8	223.8	129.4	217.6	154.6	171.9	230.6	188.8	158.3	221.1	177.4	184.5	275.4	233.2
DAVAO CITY	224.0	240.9	236.1	223.5	268.7	246.5	198.9	315.0	276.0	201.3	280.5	257.7	178.3	247.3	207.5	202.5	267.7	249.4
DAVAO DEL NORTE	216.0	240.5	234.4	209.5	269.1	238.8	137.9	291.7	206.9	182.8	283.2	229.2	161.9	254.2	208.9	190.1	285.3	235.7
DAVAO DEL SUR	163.5	232.5	198.9	173.5	240.7	210.7	191.9	312.6	270.9	151.0	252.1	203.2	125.9	188.5	158.7	191.8	268.4	245.9
DAVAO OCCIDENTAL	143.0	192.1	158.5	138.8	198.2	159.9	92.8	263.5	162.1	123.8	189.2	144.3	111.3	148.4	123.6	174.6	254.1	217.9
DAVAO ORIENTAL	187.1	253.1	222.1	195.3	252.3	213.5	136.9	234.2	178.1	171.1	192.0	177.6	157.5	184.4	163.7	219.2	281.1	252.7
REGION XII																		
SOUTH COTABATO	123.2	194.6	159.8	131.1	227.1	170.7	79.3	238.8	146.7	98.0	195.3	142.8	100.3	167.8	126.8	117.7	241.6	197.9
COTABATO	197.2	238.5	228.2	223.9	301.7	277.4	269.1	337.0	316.2	202.4	294.4	262.5	166.2	262.0	224.0	236.9	277.5	254.7
SARANGANI	127.8	173.0	145.5	128.1	187.2	146.6	73.8	203.7	113.0	103.4	157.7	123.7	100.6	147.1	113.5	130.0	241.6	191.5
SULTAN KUDARAT	170.6	212.6	190.8	183.2	261.4	222.0	150.2	283.6	211.6	152.2	225.7	185.6	139.3	196.4	167.7	208.4	252.8	240.6
REGION XIII																		
AGUSAN DEL NORTE	155.0	198.2	170.2	187.6	234.8	210.0	126.2	234.8	169.2	130.9	204.0	149.1	140.5	201.1	157.6	197.8	262.6	229.2
AGUSAN DEL SUR	170.3	271.1	225.6	204.3	269.8	246.8	142.9	292.1	230.6	134.9	272.4	200.8	140.9	254.5	196.0	215.5	331.1	265.5
DINAGAT ISLANDS	158.6	181.0	169.7	199.9	214.9	206.6	156.6	213.2	187.2	163.6	201.1	184.0	174.0	200.2	190.0	285.9	312.5	287.4
SURIGAO DEL NORTE	149.2	188.6	164.8	187.3	219.4	201.0	126.2	205.7	151.2	134.5	188.6	153.5	142.3	189.1	163.2	251.0	294.9	280.5
SURIGAO DEL SUR	167.2	277.4	219.0	200.5	277.2	243.5	138.1	260.0	205.9	134.8	197.3	169.2	141.0	186.5	164.3	240.1	340.2	279.0
BARM																		
BASILAN	144.4	158.7	151.1	171.0	187.7	176.4	158.5	189.0	167.7	140.7	174.7	153.8	177.6	188.6	180.6	233.3	251.7	241.7
MAGUINDANAO	191.4	242.0	220.9	219.2	301.7	273.6	225.7	321.4	268.4	191.5	273.7	233.1	161.2	244.4	207.5	231.7	285.3	259.5
LANAO DEL SUR	195.7	234.0	218.3	260.4	299.6	286.2	236.3	336.1	277.1	218.0	294.8	259.1	198.0	265.1	234.2	229.1	265.9	243.3
SULU	153.0	177.6	164.3	180.6	228.1	200.4	178.6	246.1	204.5	170.3	223.7	193.2	172.0	217.8	188.6	232.7	259.8	243.1
TAWI-TAWI	165.5	209.4	178.2	191.4	262.7	216.6	185.3	288.6	230.7	181.2	271.0	215.5	175.4	270.2	202.2	232.9	290.8	248.0

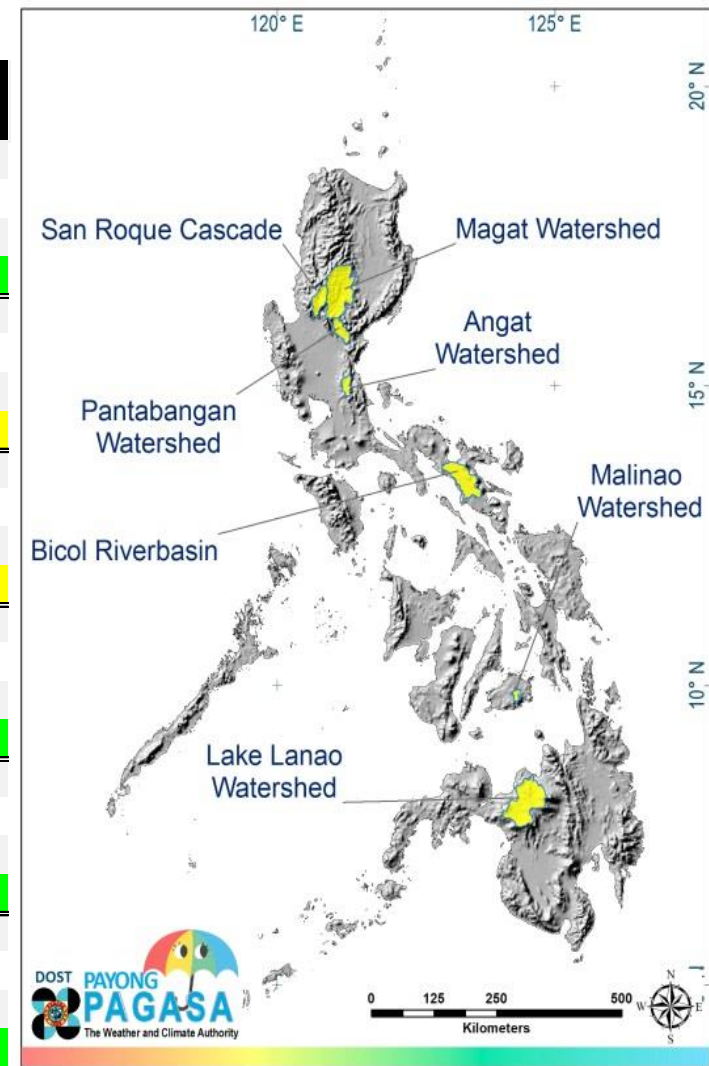


FORECAST WATERSHED RAINFALL for selected Dams and Lakes

in (mm) and (%N) FOR MAY – OCTOBER 2025

FORECAST WATERSHED RAINFALL (MAY 2025 - OCTOBER 2025)

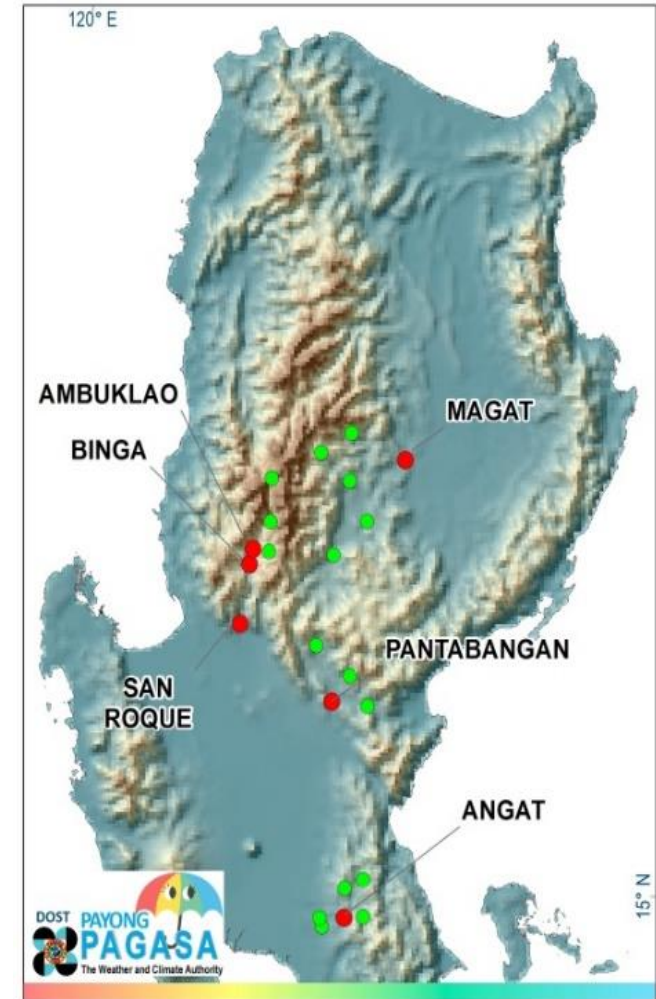
NAME		Angat WS	La Mesa WS	Lake Buhi	Lake Lanao	Magat WS	Malinao WS	Pantabangan WS	San Roque Cascade WS
MAY	MIN	262.6	251.1	186.7	176.2	261.2	154.5	298.3	326.5
	MAX	279.7	256.3	238.3	229.0	346.3	159.3	322.9	377.4
	MEAN	274.6	253.2	204.6	208.6	310.7	156.8	311.4	350.2
	%NORMAL	127.9	129.9	124.4	119.7	119.9	154.6	126.0	119.5
JUNE	MIN	291.3	299.3	191.3	241.7	162.2	169.4	233.1	258.0
	MAX	313.2	305.6	224.5	298.3	268.7	178.2	255.0	289.6
	MEAN	304.1	302.7	205.8	273.8	226.4	173.6	238.2	272.8
	%NORMAL	107.1	106.5	109.3	100.2	83.3	113.2	93.3	80.0
JULY	MIN	405.2	405.0	259.5	223.9	237.2	151.5	273.6	394.3
	MAX	448.0	432.7	308.0	327.0	480.8	173.1	343.5	536.1
	MEAN	431.1	426.5	289.6	274.5	366.5	162.1	307.9	483.0
	%NORMAL	100.1	89.6	97.8	99.0	80.4	102.8	85.7	72.7
AUGUST	MIN	328.9	397.2	226.0	226.5	276.1	153.5	260.0	497.5
	MAX	395.3	423.8	252.0	298.1	570.5	171.6	404.4	723.9
	MEAN	362.0	412.3	245.1	261.0	424.8	163.8	322.2	600.2
	%NORMAL	90.0	78.5	106.9	112.1	88.9	111.2	93.8	80.2
SEPTEMBER	MIN	334.2	377.4	245.4	209.2	255.4	155.7	314.9	396.2
	MAX	377.4	384.2	272.6	272.1	405.7	180.1	367.9	435.4
	MEAN	354.4	380.6	263.5	239.8	343.3	167.9	341.8	416.9
	%NORMAL	98.0	96.1	75.1	99.6	87.5	94.9	97.3	87.4
OCTOBER	MIN	320.3	344.3	295.9	209.4	291.6	245.1	312.5	289.1
	MAX	488.2	356.1	522.0	277.4	385.9	266.4	403.7	353.7
	MEAN	419.7	349.8	392.0	239.7	327.4	258.6	361.4	325.3
	%NORMAL	118.4	125.9	138.2	112.0	110.2	117.0	122.0	85.3



FORECAST RAINFALL OF RAIN STATIONS OVER SELECTED DAM AREAS

in (mm) and (%N) FOR MAY – OCTOBER 2025

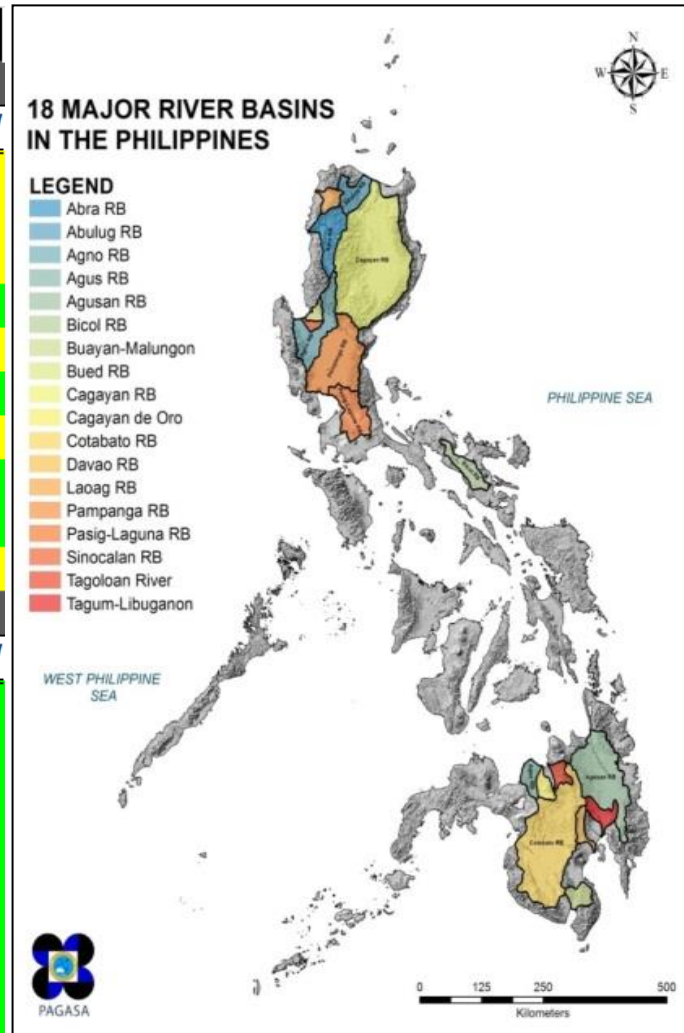
SITES	MAY		JUNE		JULY		AUGUST		SEPTEMBER		OCTOBER	
	MM	%NORMAL	MM	%NORMAL	MM	%NORMAL	MM	%NORMAL	MM	%NORMAL	MM	%NORMAL
AMBUKLAODAM	361.7	119.5	276.7	79.6	505.5	72.5	637.5	80.0	424.6	86.7	325.9	79.4
ANGATDAM	262.1	126.4	305.6	105.6	446.9	96.1	363.4	79.3	376.7	98.2	318.0	124.1
APUNAN	341.4	118.6	276.6	81.0	494.7	74.6	607.3	82.0	413.7	85.8	303.3	86.8
BADAYAN	320.4	117.4	268.0	81.3	493.0	77.8	581.4	82.7	402.6	86.5	289.0	92.9
BINGADAM	361.1	119.6	276.4	79.3	487.5	71.5	625.4	79.1	424.3	87.5	337.2	80.1
BOBOK	353.6	120.0	268.6	80.1	491.3	73.2	590.7	81.4	415.8	86.9	336.8	86.5
BUNGA	316.4	124.6	239.6	87.9	327.7	79.0	378.1	88.1	360.4	95.1	363.8	119.5
BUYOC	296.8	118.5	209.0	82.0	342.2	82.9	397.2	90.1	319.0	85.8	299.0	113.6
DANTOR	276.8	117.1	187.1	79.0	319.9	83.7	384.3	89.7	302.9	87.3	301.3	114.6
DUMAYUP	306.9	120.9	210.3	85.7	321.8	84.5	356.7	92.8	310.4	86.4	327.7	117.2
HALONG	293.2	117.3	220.4	80.3	391.9	81.6	456.9	87.0	343.5	86.8	296.6	108.4
IPODAM	257.2	126.3	300.9	102.2	435.3	91.6	401.6	78.8	390.3	98.4	316.8	126.8
MAGATDAM	272.8	118.3	164.1	81.8	237.9	87.4	279.0	95.1	255.7	86.4	299.2	123.5
MAPUTI	274.1	126.9	301.9	106.6	431.3	101.5	360.9	101.2	350.9	98.5	480.8	114.6
MARIKIT	314.8	127.5	252.9	100.2	299.3	91.2	284.1	99.7	333.4	99.4	388.3	122.6
MATULID	278.3	129.9	309.8	108.6	434.4	98.6	368.3	76.1	359.8	97.3	351.3	116.5
NORZAGARAY	258.1	125.9	298.6	101.0	438.8	92.3	401.0	79.7	391.2	98.9	315.9	127.0
PADALIS	311.7	126.3	235.0	94.4	304.8	87.6	305.1	95.4	337.3	97.6	371.2	124.1
PANTABANGAN DAM	299.2	127.5	234.5	93.1	305.6	87.9	313.4	92.9	341.5	99.5	318.2	121.1
SANROQUEDAM	326.4	120.3	260.8	79.6	394.7	70.1	500.3	77.6	402.9	92.0	325.6	99.7
STODOMINGO	323.2	121.4	242.2	85.6	376.1	78.9	430.0	89.1	359.1	87.8	341.1	107.6
TALAGUIO	274.4	127.4	297.2	103.9	445.2	99.4	394.6	86.1	364.5	98.9	402.3	126.7
UMIRAY	276.9	128.4	314.5	112.1	409.1	100.8	329.8	89.9	335.2	95.9	463.5	118.9



FORECAST RAINFALL OVER SELECTED RIVER BASINS

in (mm) and (%N) FOR MAY – JULY 2025

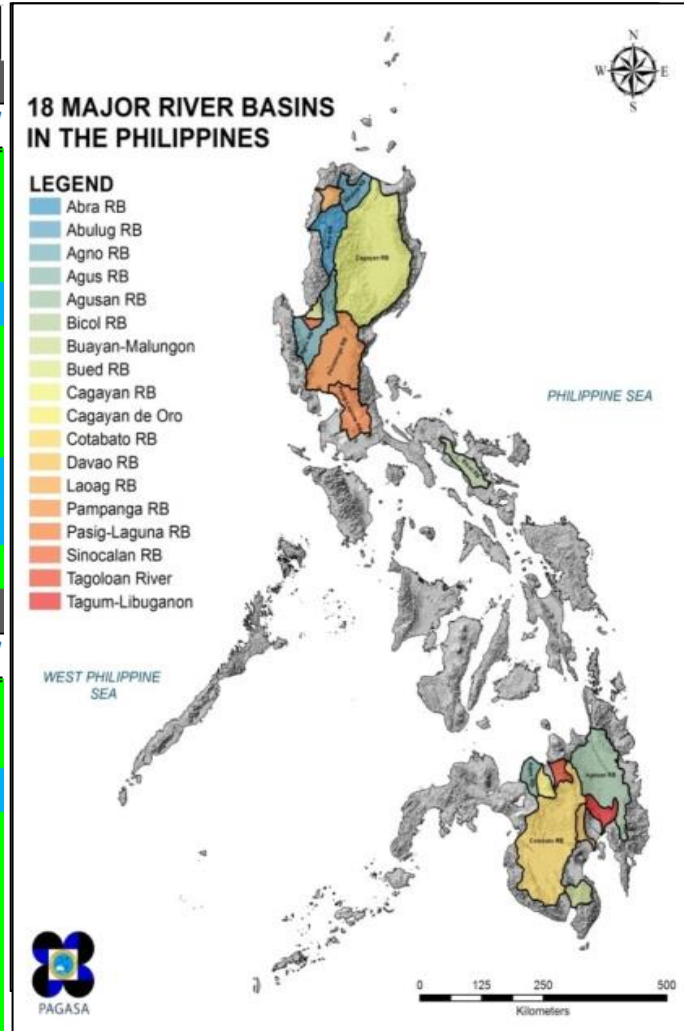
CATCHMENT	MAY 2025				JUNE 2025				JULY 2025			
	LUZON											
	MIN	MAX	MEAN	%Normal	MIN	MAX	MEAN	%Normal	MIN	MAX	MEAN	%Normal
Abra RB	172.7	327.8	227.1	110.1	151.4	280.9	215.9	80.5	276.2	524.2	386.9	77.6
Abulug RB	144.0	186.3	160.9	101.9	98.6	160.0	126.9	68.7	171.5	291.0	229.6	79.4
Agno RB	243.3	377.8	293.2	118.4	226.5	371.9	281.3	83.0	290.0	576.0	410.2	77.3
Bicol RB	186.7	237.8	201.5	123.7	190.3	224.0	202.7	108.9	237.2	307.3	281.0	97.7
Bued RB	282.1	374.4	319.0	118.2	255.5	299.2	279.3	79.0	356.9	497.2	405.2	70.0
Cagayan RB	141.3	346.3	251.0	117.2	96.3	269.0	161.9	81.3	161.8	480.6	248.1	85.4
Laoag RB	161.7	185.8	168.2	98.3	144.0	209.1	175.9	72.8	261.2	361.5	312.8	72.6
Pampanga RB	236.1	325.3	268.1	124.5	217.1	353.6	265.3	93.6	273.9	661.4	376.9	90.7
Pasig-Laguna RB	205.8	268.7	232.5	135.4	247.2	313.8	278.3	111.5	263.4	464.3	349.5	89.2
Sinocalan RB	275.3	308.6	286.2	118.0	248.8	308.9	273.2	80.1	330.8	397.5	355.3	72.2
CATCHMENT	MINDANAO											
	MIN	MAX	MEAN	%Normal	MIN	MAX	MEAN	%Normal	MIN	MAX	MEAN	%Normal
	Agus RB	173.0	216.9	188.8	124.8	228.0	283.9	253.6	102.8	199.6	299.3	239.8
Agusan RB	160.0	259.2	221.3	116.3	200.7	264.0	240.5	104.0	129.4	293.5	214.1	99.9
Buayan-Malungon	123.2	182.3	155.6	114.7	140.2	189.5	163.6	101.8	104.0	243.2	172.6	108.1
Cagayan de Oro	178.8	230.9	208.5	119.3	238.8	282.7	266.7	98.6	237.1	331.7	292.3	99.0
Cotabato RB	145.9	242.0	217.5	112.7	147.8	301.7	258.9	98.0	104.3	337.3	279.2	95.7
Davao RB	233.1	239.6	237.6	109.0	224.3	268.7	254.8	95.4	237.9	307.1	271.1	90.7
Tagoloan River	182.9	235.0	210.5	119.1	232.3	273.2	249.7	98.9	240.2	323.9	289.1	100.9
Tagum-Libuganon	224.3	244.9	236.2	112.9	221.8	256.4	237.8	99.2	134.4	263.9	181.8	87.7



FORECAST RAINFALL OVER SELECTED RIVER BASINS

in (mm) and (%N) FOR AUGUST – OCTOBER 2025

CATCHMENT	AUGUST 2025				SEPTEMBER 2025				OCTOBER 2025			
	LUZON											
	MIN	MAX	MEAN	%Normal	MIN	MAX	MEAN	%Normal	MIN	MAX	MEAN	%Normal
Abra RB	332.5	616.8	455.2	82.7	309.2	415.7	364.9	97.8	133.5	302.7	244.9	105.8
Abulug RB	204.2	366.1	292.9	83.7	270.1	338.9	303.2	101.6	231.2	314.4	287.8	107.4
Agno RB	370.7	723.9	492.9	78.7	340.2	460.5	392.8	93.0	238.5	368.6	297.2	113.1
Bicol RB	202.5	252.0	239.5	108.7	246.3	272.6	265.1	76.8	295.9	604.0	425.8	138.6
Bued RB	432.9	687.6	513.8	74.5	385.8	433.2	409.4	90.8	240.5	344.9	297.5	95.7
Cagayan RB	179.0	570.2	281.7	95.2	215.5	405.9	272.1	92.9	276.4	595.8	336.8	115.8
Laoag RB	340.6	458.7	397.1	82.0	327.3	375.7	356.6	99.4	121.7	253.7	191.4	112.7
Pampanga RB	251.6	697.2	377.3	88.7	310.3	525.3	366.3	98.8	211.6	488.0	306.7	121.6
Pasig-Laguna RB	197.1	470.0	315.7	82.8	231.2	449.7	315.8	91.2	289.7	587.7	377.7	137.5
Sinocalan RB	418.0	460.0	435.2	73.7	369.6	407.5	385.3	93.4	237.6	307.7	270.3	110.5
MINDANAO												
CATCHMENT	MIN	MAX	MEAN	%Normal	MIN	MAX	MEAN	%Normal	MIN	MAX	MEAN	%Normal
Agus RB	208.6	276.9	239.1	115.9	197.7	254.6	223.5	99.8	209.4	249.3	224.7	113.3
Agusan RB	130.9	274.2	196.8	104.2	142.6	255.7	192.3	100.0	197.8	308.1	255.7	114.8
Buayan-Malungon	98.0	175.4	139.9	107.3	103.7	140.1	119.8	94.4	117.7	231.5	184.3	120.7
Cagayan de Oro	231.0	304.7	273.6	112.5	223.8	275.2	255.1	101.5	215.4	285.3	250.4	111.9
Cotabato RB	122.5	316.9	245.6	105.5	110.3	276.4	216.1	97.7	173.6	315.0	255.2	110.7
Davao RB	232.0	283.5	264.8	102.1	178.6	256.0	226.6	97.1	228.7	273.8	250.4	105.3
Tagoloan River	228.9	305.2	268.4	110.5	220.8	271.7	248.6	102.8	237.6	309.4	279.3	110.9
Tagum-Libuganon	189.7	263.9	220.3	100.0	178.0	247.9	206.1	95.9	193.8	279.9	238.7	105.7



DRY DAY* FORECAST

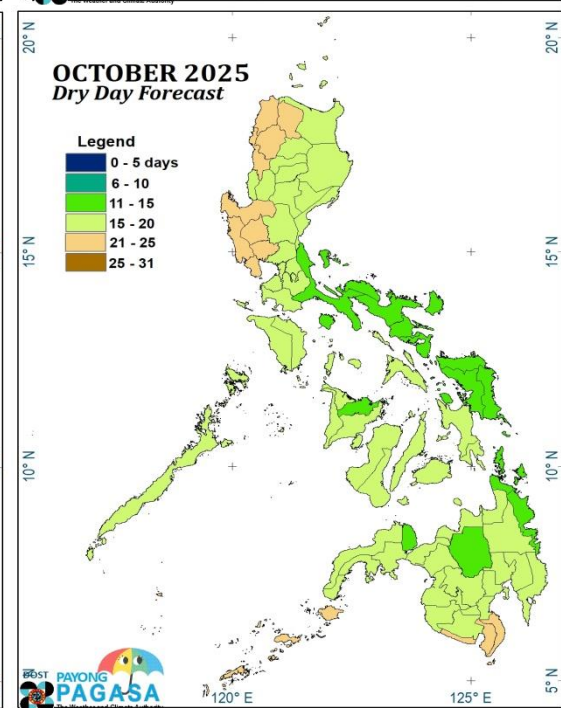
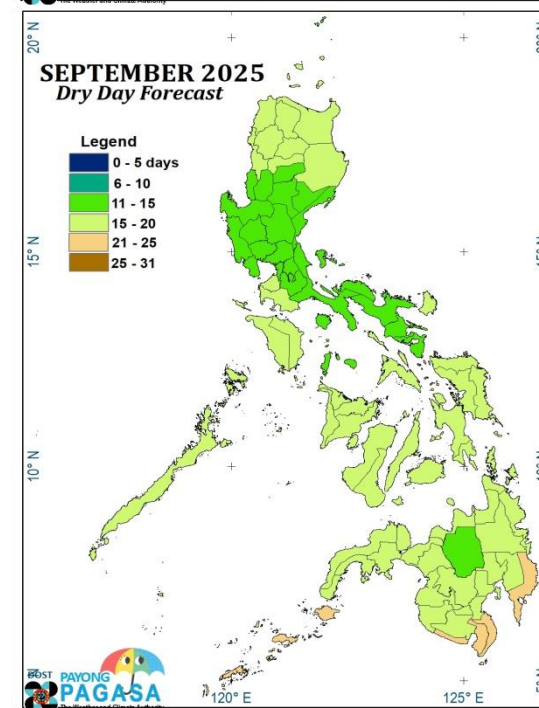
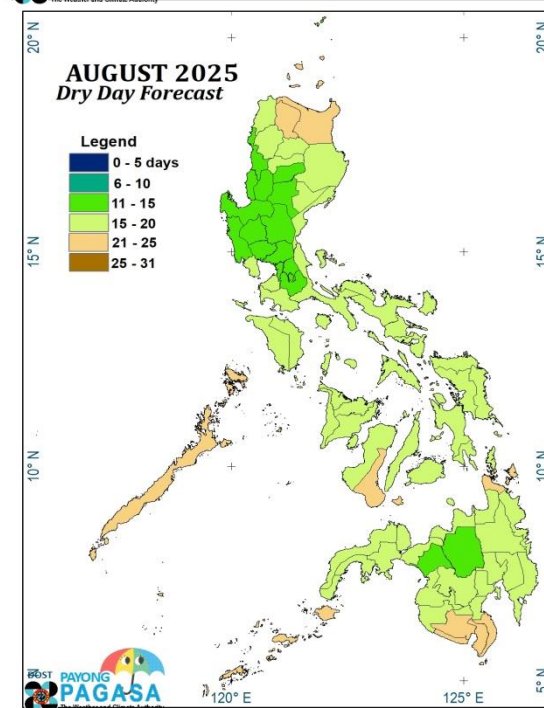
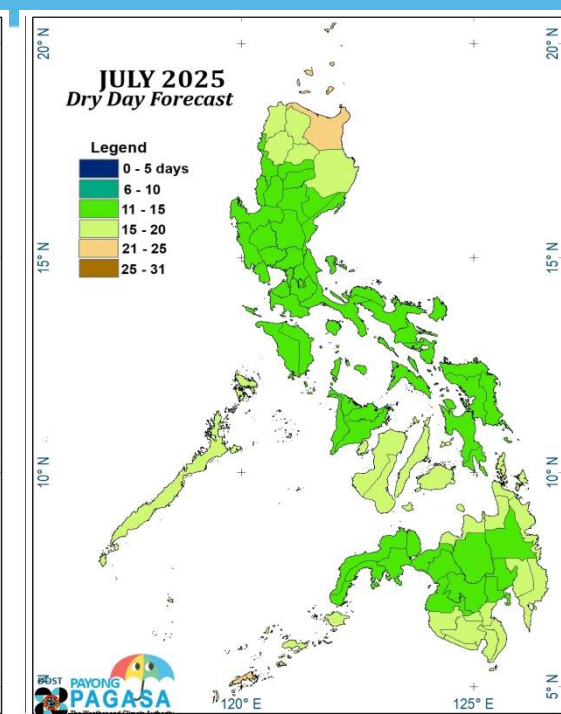
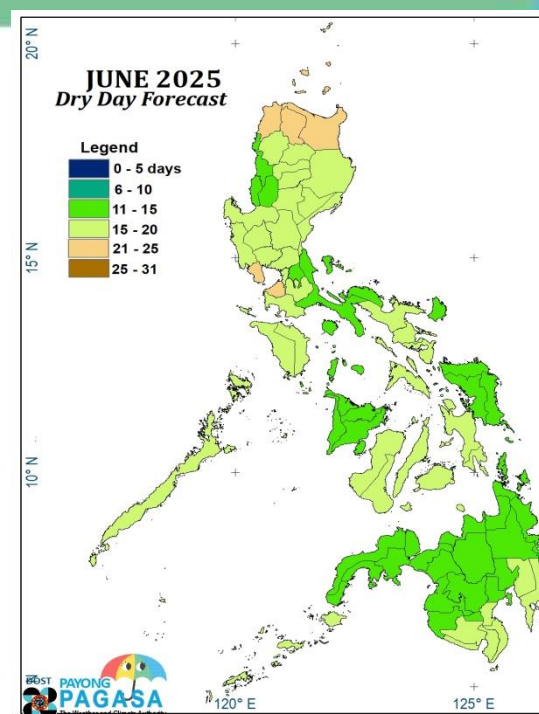
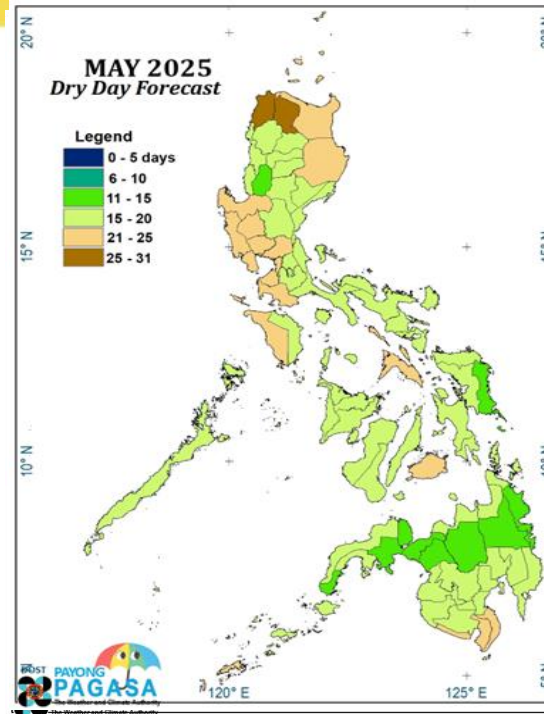
(MAY – OCTOBER 2025)

DRY DAY FORECAST ANOMALY

Brown/Red shade – increased number of dry days

Green/Blue shade – less than the usual number of dry days, i.e., more days with rain

* Dry day - defined as a day with less than 1 mm of rainfall is observed.



Date Issued: 21 April 2025

The Weather and Climate Authority

DRY DAY* FORECAST

(MAY – OCTOBER 2025)

DRY DAY FORECAST ANOMALY

Brown/Red shade –
increased number of dry
days

Green/Blue shade – less
than the usual number of dry
days, i.e., more days with
rain

* Dry day - defined as a
day with less than 1 mm
of rainfall is observed.

PROVINCE	NORMAL (1991 - 2020)						FORECAST						ANOMALY					
	MAY	JUN	JUL	AUG	SEP	OCT	MAY	JUN	JUL	AUG	SEP	OCT	MAY	JUN	JUL	AUG	SEP	OCT
CORDILLERA ADMINISTRATIVE REGION (CAR)																		
ABRA	19	16	15	15	17	20	19	16	15	16	17	21	0	0	0	1	0	1
BENGUET	14	13	11	10	11	18	14	14	12	11	12	18	0	1	1	1	1	0
IFUGAO	16	15	13	14	14	17	16	16	13	15	14	17	0	1	0	1	0	0
KALINGA	19	18	16	17	17	19	20	19	16	18	17	19	1	1	0	1	0	0
APAYAO	21	21	19	19	18	21	25	22	20	20	18	20	4	1	1	1	0	-1
MOUNTAIN PROVINCE	17	16	14	14	15	18	16	16	14	15	15	18	-1	0	0	1	0	0
REGION I																		
ILOCOS NORTE	21	20	18	18	19	23	27	22	18	19	19	24	6	2	0	1	0	1
ILOCOS SUR	17	13	12	12	14	19	15	13	13	13	15	20	-2	0	1	1	1	1
LA UNION	15	13	11	11	12	19	15	14	12	12	12	20	0	1	1	1	0	1
PANGASINAN	18	16	14	14	15	22	21	17	14	14	14	23	3	1	0	0	-1	1
REGION II																		
BATANES	18	19	17	14	14	17	18	19	16	15	14	18	0	0	-1	1	0	1
CAGAYAN	21	21	20	20	18	18	24	22	21	21	17	18	3	1	1	1	-1	0
ISABELA	19	19	17	18	17	17	20	19	17	19	16	16	1	0	0	1	-1	-1
NUEVA VIZCAYA	15	14	13	13	13	17	16	15	13	14	13	17	1	1	0	1	0	0
QUIRINO	16	15	14	15	14	16	17	15	13	16	15	16	1	0	-1	1	1	0
REGION III (CENTRAL LUZON)																		
BATAAN	20	17	14	14	15	21	25	20	15	17	14	20	5	3	1	3	-1	-1
BULACAN	17	15	13	14	13	18	20	16	14	15	13	17	3	1	1	1	0	-1
NUEVA ECIJA	18	16	14	14	14	19	19	17	14	15	14	19	1	1	0	1	0	0
PAMPANGA	18	16	13	14	15	21	21	18	14	15	15	20	3	2	1	1	0	-1
TARLAC	18	16	13	14	15	22	22	18	14	14	15	22	4	2	1	0	0	0
ZAMBALES	19	15	13	13	15	21	23	18	14	14	13	22	4	3	1	1	-2	1
AURORA	16	15	15	16	14	15	18	15	14	17	15	15	2	0	-1	1	1	0
NATIONAL CAPITAL REGION																		
METRO MANILA	19	15	12	13	13	18	20	16	13	14	13	19	1	1	1	1	0	1
REGION IV-A (CALABARZON)																		
BATANGAS	21	18	16	17	17	19	20	19	14	19	18	18	-1	1	-2	2	1	-1
CAVITE	22	19	15	15	16	21	24	21	15	18	17	20	2	2	0	3	1	-1
LAGUNA	18	15	13	14	13	16	19	16	13	14	14	17	1	1	0	0	1	1
RIZAL	17	13	12	12	11	17	20	15	13	12	12	17	3	2	1	0	1	0
QUEZON	17	14	15	16	14	12	19	14	13	18	14	12	2	0	-2	2	0	0
REGION IV-B (MIMAROPA)																		
MARINDUQUE	18	15	15	17	15	13	19	15	13	19	15	14	1	0	-2	2	0	1
OCCIDENTAL MINDORO	21	16	15	16	16	19	22	17	13	18	15	18	1	1	-2	2	-1	-1
ORIENTAL MINDORO	20	16	15	17	16	17	20	16	13	19	16	17	0	0	-2	2	0	0
ROMBLON	19	14	15	17	15	15	19	14	13	19	15	15	0	0	-2	2	0	0
PALAWAN	21	16	17	18	16	17	20	17	15	20	16	18	-1	1	-2	2	0	1
REGION V (BICOL)																		
ALBAY	17	14	13	14	13	14	17	15	12	17	13	14	0	1	-1	3	0	0
CAMARINES NORTE	18	15	16	17	14	11	18	15	13	18	14	12	0	0	-3	1	0	1
CAMARINES SUR	18	15	15	16	13	13	18	15	13	17	13	13	0	0	-2	1	0	0
CATANDUANES	18	15	15	17	15	13	17	14	13	16	16	13	-1	-1	-2	-1	1	0
MASBATE	21	17	16	17	16	17	23	17	14	18	16	16	2	0	-2	1	0	-1
SORSOGON	18	15	14	15	14	15	19	15	13	17	15	15	1	0	-1	2	1	0

DRY DAY* FORECAST

(MAY – OCTOBER 2025)

DRY DAY FORECAST ANOMALY

Brown/Red shade – increased number of dry days

Green/Blue shade – less than the usual number of dry days, i.e., more days with rain

* Dry day - defined as a day with less than 1 mm of rainfall is observed.

PROVINCE	NORMAL (1991 - 2020)						FORECAST						ANOMALY					
	MAY	JUN	JUL	AUG	SEP	OCT	MAY	JUN	JUL	AUG	SEP	OCT	MAY	JUN	JUL	AUG	SEP	OCT
REGION VI (WESTERN VISAYAS)																		
AKLAN	19	14	15	17	16	16	18	14	13	18	15	15	-1	0	-2	1	-1	-1
ANTIQUE	18	14	14	16	15	17	18	14	14	16	15	17	0	0	0	0	0	0
CAPIZ	19	15	16	17	16	16	17	15	13	18	16	15	-2	0	-3	1	0	-1
GUIMARAS	19	14	15	16	16	17	18	14	15	16	16	17	-1	0	0	0	0	0
ILOILO	19	14	15	17	16	16	18	14	14	17	16	16	-1	0	-1	0	0	0
NEGROS ISLAND REGION (NIR)																		
NEGROS OCCIDENTAL	21	16	17	18	17	18	19	16	16	18	18	18	-2	0	-1	0	1	0
NEGROS ORIENTAL	22	17	18	19	18	18	19	17	16	20	19	18	-3	0	-2	1	1	0
SIQUIJOR	21	16	17	19	19	17	20	17	17	21	19	17	-1	1	0	2	0	0
REGION VII (CENTRAL VISAYAS)																		
BOHOL	20	17	17	18	17	16	20	17	17	19	17	17	0	0	0	1	0	1
CEBU	21	17	17	18	17	17	19	16	15	19	17	17	-2	-1	-2	1	0	0
REGION VIII (EASTERN VISAYAS)																		
BILIRAN	20	15	16	18	15	15	18	15	13	18	16	15	-2	0	-3	0	1	0
EASTERN SAMAR	15	12	14	17	15	12	14	12	13	17	15	12	-1	0	-1	0	0	0
LEYTE	20	15	16	17	16	16	16	16	13	18	16	15	-4	1	-3	1	0	-1
NORTHERN SAMAR	17	14	15	18	15	13	17	13	13	18	16	13	0	-1	-2	0	1	0
SAMAR (WESTERN SAMAR)	17	13	14	17	15	13	16	13	13	18	15	13	-1	0	-1	1	0	0
SOUTHERN LEYTE	20	16	16	17	16	15	19	17	14	19	17	15	-1	1	-2	2	1	0
REGION IX (ZAMBOANGA PENINSULA)																		
ZAMBOANGA DEL NORTE	19	15	17	18	17	15	15	15	15	18	18	16	-4	0	-2	0	1	1
ZAMBOANGA DEL SUR	18	14	16	17	16	15	15	14	15	18	18	16	-3	0	-1	1	2	1
ZAMBOANGA SIBUGAY	19	15	17	18	17	16	15	15	15	18	18	16	-4	0	-2	0	1	0
REGION X (NORTHERN MINDANAO)																		
BUKIDNON	14	12	13	14	13	14	14	13	11	14	14	14	0	1	-2	0	1	0
CAMIGUIN	20	17	17	18	18	17	19	16	17	19	18	18	-1	-1	0	1	0	1
LANAO DEL NORTE	17	13	15	16	16	15	15	13	14	16	16	16	-2	0	-1	0	0	1
MISAMIS OCCIDENTAL	17	14	15	17	16	14	15	13	14	17	17	15	-2	-1	-1	0	1	1
MISAMIS ORIENTAL	18	15	16	17	17	17	17	15	15	17	17	18	-1	0	-1	0	0	1
REGION XI (DAVAO REGION)																		
DAVAO DE ORO	16	16	17	17	18	18	16	15	16	17	20	18	0	-1	-1	0	2	0
DAVAO CITY	17	15	16	16	16	17	17	15	15	17	18	18	0	0	-1	1	2	1
DAVAO DEL NORTE	16	15	16	16	16	17	16	14	14	16	18	17	0	-1	-2	0	2	0
DAVAO DEL SUR	19	17	18	19	18	19	19	16	17	20	20	19	0	-1	-1	1	2	0
DAVAO OCCIDENTAL	22	20	21	21	21	22	22	19	20	23	22	21	0	-1	-1	2	1	-1
DAVAO ORIENTAL	18	17	18	18	20	19	17	16	18	19	22	19	-1	-1	0	1	2	0
REGION XII (SOCCSKSARGEN)																		
SOUTH COTABATO	20	17	18	20	18	20	19	16	17	21	20	19	-1	-1	-1	1	2	-1
COTABATO	16	13	15	16	14	16	16	13	13	16	16	16	0	0	-2	0	2	0
SARANGANI	22	19	20	21	20	21	21	18	19	23	21	20	-1	-1	-1	2	1	-1
SULTAN KUDARAT	18	15	17	18	16	18	17	14	15	19	18	17	-1	-1	-2	1	2	-1
REGION XIII- CARAGA																		
AGUSAN DEL NORTE	19	15	18	19	18	17	15	14	17	19	19	17	-4	-1	-1	0	1	0
AGUSAN DEL SUR	15	13	15	16	16	16	13	13	14	16	17	15	-2	0	-1	0	1	-1
DINAGAT ISLANDS	19	14	17	18	17	14	17	14	15	20	18	13	-2	0	-2	2	1	-1
SURIGAO DEL NORTE	19	14	17	18	18	14	16	13	16	20	19	14	-3	-1	-1	2	1	0
SURIGAO DEL SUR	16	13	16	17	17	15	13	13	15	18	18	14	-3	0	-1	1	1	-1
ARMM																		
BASILAN	21	18	19	20	19	19	18	17	18	21	20	20	-3	-1	-1	1	1	1
MAGUINDANAO	16	13	15	17	15	16	15	13	13	16	17	16	-1	0	-2	-1	2	0
LANAO DEL SUR	15	13	14	15	14	15	14	13	12	15	15	15	-1	0	-2	0	1	0
SULU	22	19	20	21	20	20	20	18	20	22	21	22	-2	-1	0	1	1	2
TAWI-TAWI	23	21	21	23	21	21	20	20	20	25	22	22	-3	-1	-1	2	1	1



Date Issued: 21 April 2025

The Weather and Climate Authority

FORECAST VALUES

FOR MAY – OCTOBER 2025

Source: <https://www.pagasa.dost.gov.ph/climate>

• Tabular format

1. *Rainfall (in mm and percent of normal)*

- Province and Region
- Selected rain stations over dams and lakes
- Selected watershed areas
- Selected river basins

2. *Rainfall (in terms of probability)*

- Station (Synoptic and Agromet)

3. *Number of dry days*

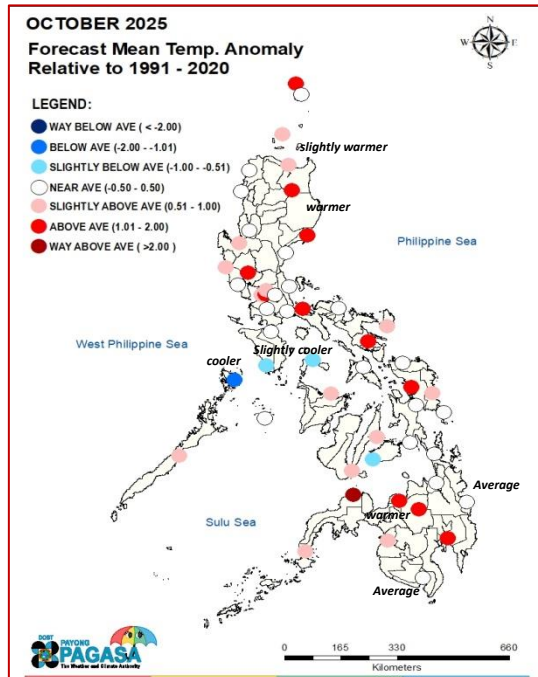
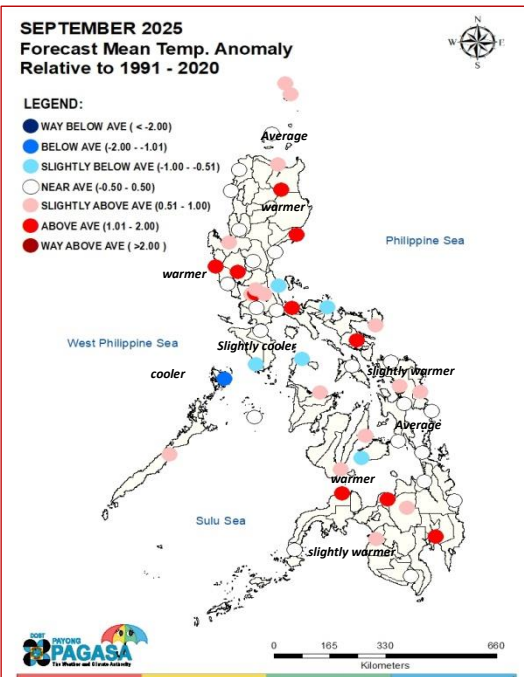
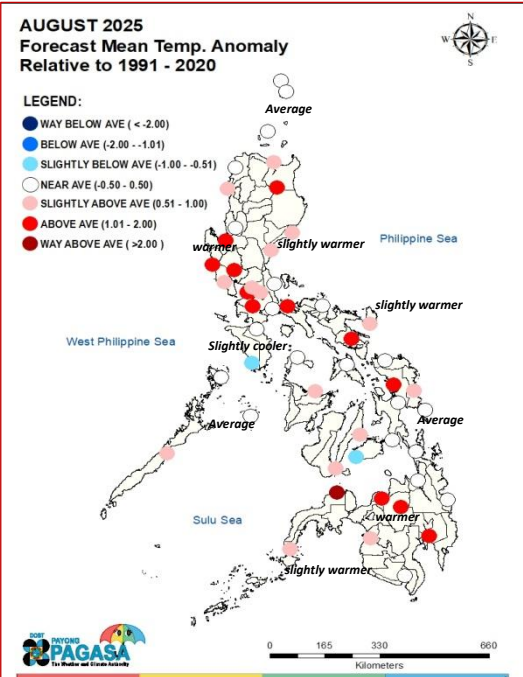
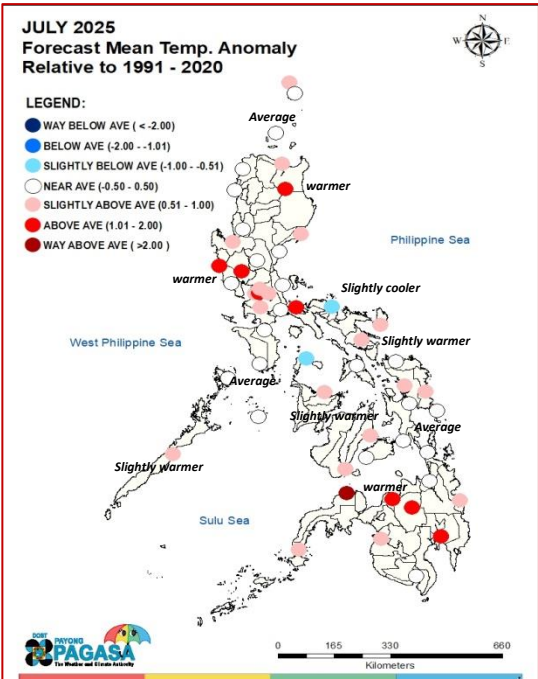
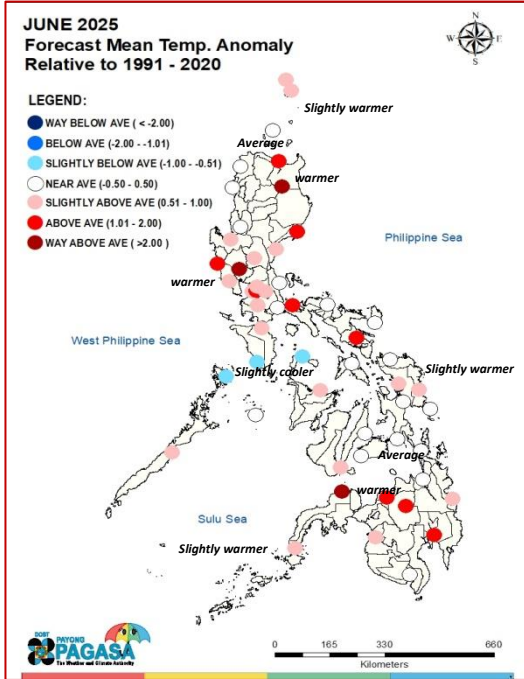
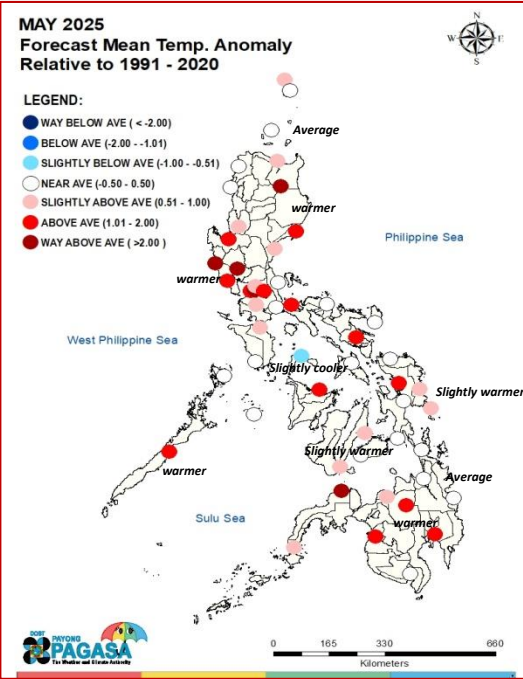
- Province

MONTHLY MEAN TEMPERATURE FORECAST (MAY 2025 - OCTOBER 2025)

LEGEND

- WAY BELOW AVE (< -2.00)
- BELOW AVE (-2.00 - -1.01)
- SLIGHTLY BELOW AVE (-1.00 - -0.51)
- NEAR AVE (-0.50 - 0.50)
- SLIGHTLY ABOVE AVE (0.51 - 1.00)
- ABOVE AVE (1.01 - 2.00)
- WAY ABOVE AVE (>2.00)

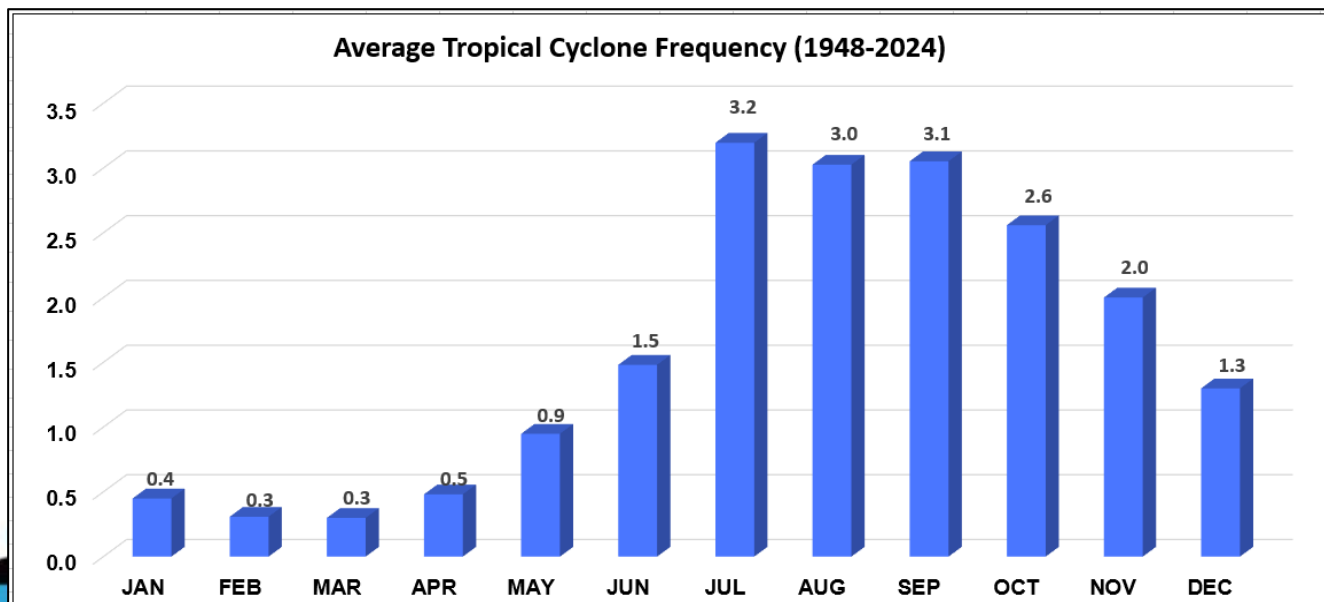
Date Issued: 21 April 2025



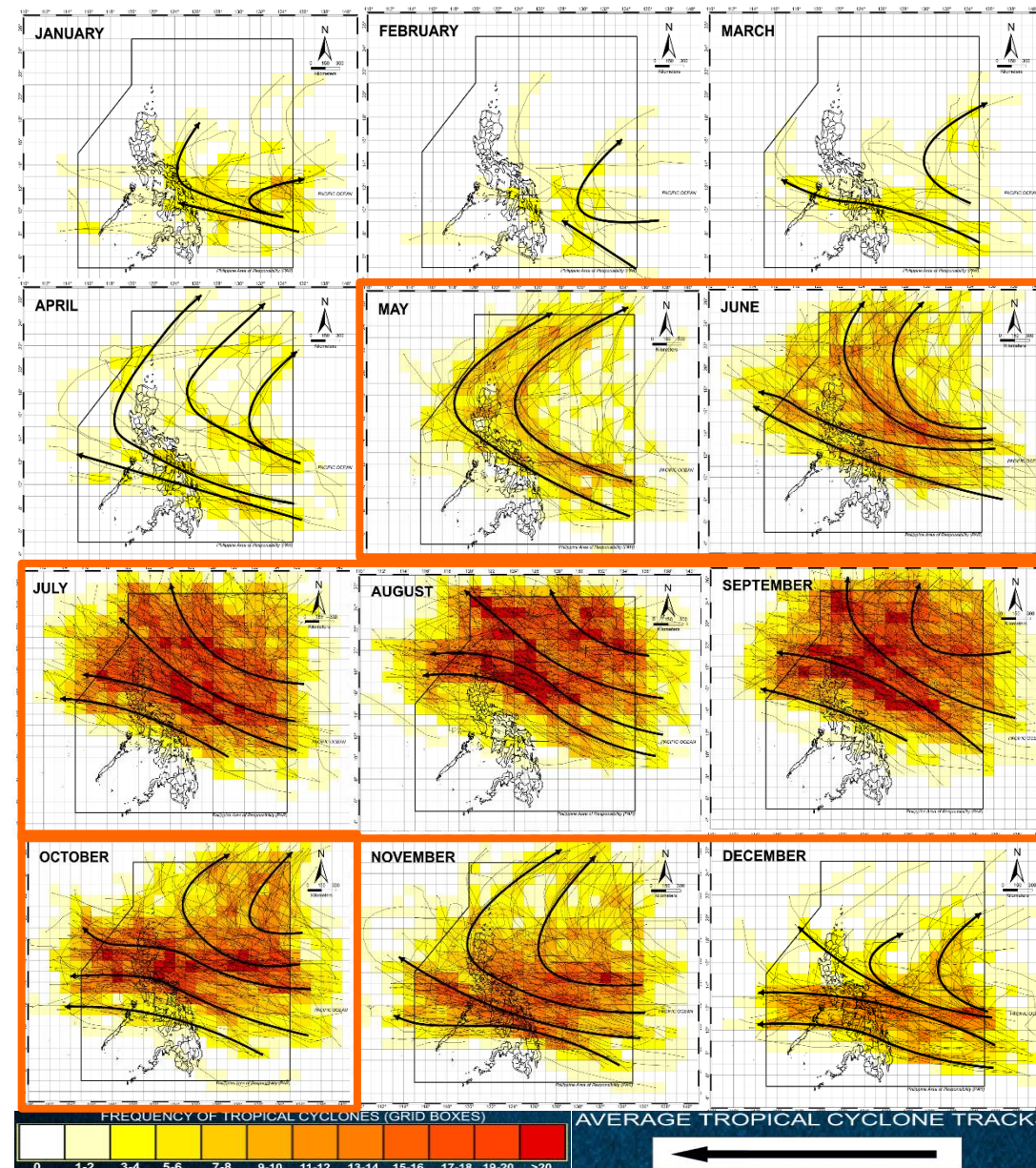


HOW MANY TROPICAL CYCLONES SHOULD YOU EXPECT?

MAY 2025	1 or 2	AUGUST 2025	2 to 4
JUNE 2025	1 or 2	SEPTEMBER 2025	2 to 4
JULY 2025	2 or 3	OCTOBER 2025	2 to 4
10-19 TCs expected			



Tropical Cyclone Tracks Climatology with actual tracks from 1948-2015



FORECAST RANGES OF EXTREME TEMPERATURE

TMAX Summary	May-25		Jun-25		Jul-25		Aug-25		Sep-25		Oct-25	
	Tmax-Range		Tmax-Range		Tmax-Range		Tmax-Range		Tmax-Range		Tmax-Range	
Northern Luzon	36.0	39.3	34.6	39.4	35.0	38.9	35.1	37.7	34.6	36.9	33.9	37.1
Lowlands Luzon	36.8	39.2	35.0	37.8	34.1	36.6	34.8	36.7	34.7	38.5	33.8	36.1
Mountainous Luzon	25.8	28.5	24.8	28.2	25.0	27.2	24.8	27.1	24.4	26.6	24.8	26.5
Metro Manila	35.5	37.1	33.6	37.1	33.0	36.1	33.4	35.6	34.1	35.8	33.5	35.7
Lowlands Visayas	34.4	36.5	34.4	36.6	33.7	36.1	34.3	36.3	34.6	36.5	34.4	36.0
Lowlands Mindanao	34.5	37.0	34.3	37.7	34.1	37.1	34.5	36.6	34.3	37.5	35.0	37.2
Mountainous Mindanao	31.8	34.3	30.9	32.8	30.4	32.5	31.5	33.1	31.3	33.8	32.2	33.7

TMIN Summary	May-25		Jun-25		Jul-25		Aug-25		Sep-25		Oct-25	
	Tmin-Range		Tmin-Range		Tmin-Range		Tmin-Range		Tmin-Range		Tmin-Range	
Northern Luzon	18.7	22.4	17.5	23.2	18.8	24.0	19.6	22.9	19.3	23.8	15.5	20.8
Lowlands Luzon	20.3	23.3	20.9	23.1	20.1	23.2	20.7	23.0	20.2	22.4	18.8	23.2
Mountainous Luzon	13.2	16.0	14.0	15.6	14.0	16.4	13.7	15.2	13.6	16.5	12.5	15.8
Metro Manila	22.1	23.3	20.2	24.5	20.3	25.7	23.0	25.8	23.0	25.0	22.8	24.5
Lowlands Visayas	19.5	19.5	19.5	19.5	19.5	19.5	19.5	19.5	19.5	19.5	19.5	19.5
Lowlands Mindanao	20.4	22.1	19.7	21.4	19.5	21.2	19.6	21.2	19.2	21.1	20.1	21.8
Mountainous Mindanao	15.4	18.2	15.2	18.0	15.6	17.9	13.1	17.6	14.2	17.6	14.6	17.8



Date Issued: 21 April 2025



SUMMARY

ENSO Status

- ENSO-neutral conditions are present with near-to-below average sea surface temperature anomalies across the central and eastern equatorial Pacific
- Most climate models suggests that ENSO-neutral conditions are likely to persist until the end of 2025

Rainfall Outlook

- **May 2025** - Above normal rainfall over most parts of the country, except for parts of Northern Luzon and Mindanao where near normal rainfall is expected
- **June to August 2025** - Near normal rainfall in most areas, with below normal conditions in Northern Luzon
- **September 2025** – Predominantly near normal rainfall, except for Camarines Sur where below normal rainfall is anticipated
- **October 2025** – Near to above normal rainfall conditions across the country.

SUMMARY

Temperature Outlook

- Warmer than average conditions are expected across most parts of the country from May to August, especially in Luzon, Visayas, and parts of Mindanao, with many areas experiencing slightly above to way above average temperatures
- Near to slightly below average temperatures may occur in localized areas starting September to October, particularly in parts of Northern and Western Luzon and Mindanao, while the rest of the country remains generally near to slightly above average

Tropical Cyclone Frequency:

- 10 -19 TCs will likely develop/enter the PAR during the forecast period (May – October 2025).

PAGASA will continue to monitor ENSO conditions and updates/advisories shall be issued as appropriate.

Tentative schedule of
184th CF:
-- May 28, 2025





www.pagasa.dost.gov.ph



@Dost_pagasa



@dost_pagasa



@DOST_PAGASA



TRUNKLINE: (02) 8284- 0800

EXTENSIONS

TYPHOON/WEATHER: 4801

FLOOD: 4855

CLIMATE: 4920 or 4921

MEDIA: 4865



climps@pagasa.dost.gov.ph



PAGASA

The Weather and Climate Authority



*Thank you for
listening!*