



PAYONG PAGASA

SEASONAL CLIMATE OUTLOOK



Issued: 23 January 2020


OVERVIEW


The sea surface temperatures (SSTs) across the tropical Pacific Ocean are near to slightly warmer than average during the past months. This may persist until the Dec-Jan-Feb (DJF) season, but may return to ENSO-neutral conditions by Mar-Apr-May (MAM) 2020 season and is expected to continue until September 2020. Atmospheric indicators such as cloudiness, tradewinds and Southern Oscillation Index (SOI) reflect ENSO-neutral conditions. PAGASA's ENSO Alert System status is currently INACTIVE.

January to March 2020 Outlook

WEATHER SYSTEMS THAT AFFECTED THE COUNTRY


L **LOW PRESSURE AREA (LPA)**
Areas of lowest pressure characterized by cloudiness and rainshowers; areas where a tropical cyclone can form

 **INTERTROPICAL CONVERGENCE ZONE (ITCZ)**
Series of low pressure areas brought about by converging northeast (NE) and southeast (SE) winds that cause thunderstorms and rainshowers

 **RIDGE OF HIGH PRESSURE AREA (HPA)**
An extension of a high pressure area characterized by very light wind and clear skies


TAIL-END OF THE COLD FRONT
Extended zone of converging winds from east to northeast that often brings thunderstorms and rainshowers

NE **NORTHEAST MONSOON (AMIHAN)**
Cold winds from the northeast that bring rains over the eastern side of the country.


 **Passage of 0 to 1 TROPICAL CYCLONES**
'Bagyo'; may refer to a tropical depression, tropical storm, severe tropical storm, typhoon, or super typhoon.

E **EASTERLIES**
Warm winds blowing from the east that may bring cloudiness over the eastern part of the country


RAINFALL CONDITION

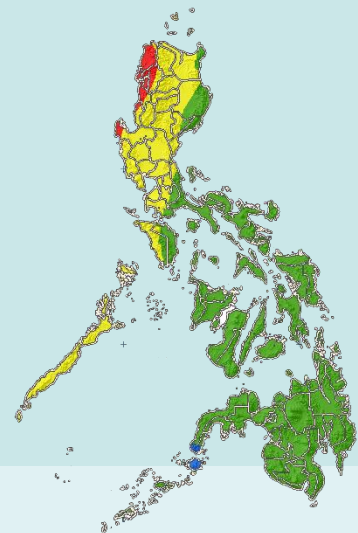
 **NEAR NORMAL**
+20% or -20% from the normal

south eastern Luzon, Visayas and Mindanao provinces

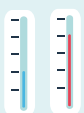
 **BELOW NORMAL**
20%-60% reduction from the normal

Most parts of Luzon

 **WAY BELOW NORMAL**
Greater than 60% reduction from the normal*



TEMPERATURE



Surface air temperatures are expected to be generally near average in most parts the country, except for some areas that may also experience slightly above or slightly below average temperatures during the forecast period.

For further information, please contact the Climatology and Agrometeorology Division (CAD) at telephone numbers (02) 434-0955 or (02) 435-1675.



PAYONG PAGASA

SEASONAL CLIMATE OUTLOOK



Issued: 23 January 2020

April to June 2020 Outlook

EXPECTED WEATHER SYSTEMS

L **LOW PRESSURE AREA (LPA)**
Areas of lowest pressure characterized by cloudiness and rainshowers; areas where a tropical cyclone can form

E **EASTERLIES**
Warm winds blowing from the east that may bring cloudiness over the eastern part of the country

(((H **RIDGE OF HIGH PRESSURE AREA (HPA)**
An extension of a high pressure area characterized by very light wind and clear skies

SW **SOUTHWEST MONSOON (HABAGAT)**
Warm moist winds from the southwest causing rains over the western portion of the country from May to September

E **EASTERLIES**
Warm winds blowing from the east that may bring cloudiness over the eastern part of the country

TAIL-END OF A COLD FRONT
Extended zone of converging winds from east to northeast that often brings thunderstorms and rainshowers

INTERTROPICAL CONVERGENCE ZONE (ITCZ)
Series of low pressure areas brought about by converging northeast (NE) and southeast (SE) winds that cause thunderstorms and rainshowers

2 to 4 TROPICAL CYCLONES
'Bagyo'; may refer to a tropical depression, tropical storm, severe tropical storm, typhoon, or super typhoon.

RAINFALL CONDITION



NEAR NORMAL
+20% or -20% from the normal

Most parts of the country



BELOW NORMAL
20%-60% reduction from the normal

Northwestern Luzon

ENSO-neutral conditions may prevail during the period. This season is characterized by warm and humid conditions during the months of April and May. The onset of the rainy season in the western sections of the country may commence during the second half of May until the first half of June.



TEMPERATURE



Generally, surface air temperatures are likely to be near to above average in most parts of the country.