



# PAYONG PAGASA

## SEASONAL CLIMATE OUTLOOK



Issued: 15 July 2019

### OVERVIEW

Weak El Niño condition which started since the last quarter of 2018 had persisted in the central and eastern equatorial Pacific (CEEP). The warmer than average sea surface temperatures (SSTs) have slightly weakened in June, but still within El Niño threshold. It is expected that a transition from El Niño to ENSO-neutral condition will be likely in August or September, with ENSO-neutral favored to continue through the last quarter of 2019.

### July to September 2019 Outlook

### WEATHER SYSTEMS THAT AFFECTED THE COUNTRY

**L LOW PRESSURE AREA (LPA)**  
Areas of lowest pressure characterized by cloudiness and rainshowers; areas where a tropical cyclone can form

**≡≡≡ INTERTROPICAL CONVERGENCE ZONE (ITCZ)**  
Series of low pressure areas brought about by converging northeast (NE) and southeast (SE) winds that cause thunderstorms and rainshowers

**(((H RIDGE OF HIGH PRESSURE AREA (HPA)**  
An extension of a high pressure area characterized by very light wind and clear skies

**SW SOUTHWEST MONSOON (HABAGAT)**  
Warm moist winds from the southwest causing rains over the western portion of the country from May to September

**6 Passage of 6 to 9 TROPICAL CYCLONES**  
'Bagyo'; may refer to a tropical depression, tropical storm, severe tropical storm, typhoon, or super typhoon.

### RAINFALL CONDITION

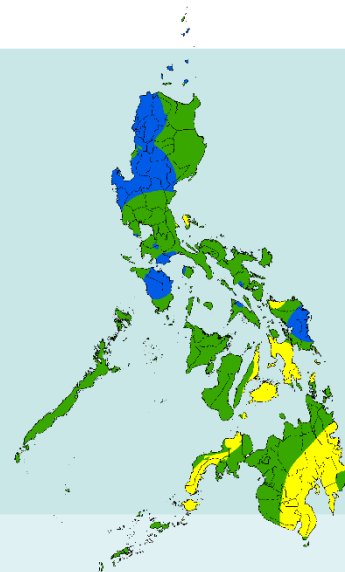
**NEAR NORMAL**  
+20% or -20% from the normal

**ABOVE NORMAL**  
120% greater than the normal

Most parts of Luzon and Visayas, Northern and western part of Mindanao

**BELOW NORMAL**  
20%-60% reduction from the normal

Bohol, Siquijor, Leyte and Southern Leyte, Zamboanga peninsula



### TEMPERATURE

**☌☌☌** Generally, surface air temperatures are likely to be near to above average in most parts of the country



# PAYONG PAGASA

## SEASONAL CLIMATE OUTLOOK



Issued: 15 July 2019

### October to December 2019 Outlook

## EXPECTED WEATHER SYSTEMS

**L** **LOW PRESSURE AREA (LPA)**  
Areas of lowest pressure characterized by cloudiness and rainshowers; areas where a tropical cyclone can form

**E** **EASTERLIES**  
Warm winds blowing from the east that may bring cloudiness over the eastern part of the country

**((( H** **RIDGE OF HIGH PRESSURE AREA (HPA)**  
An extension of a high pressure area characterized by very light wind and clear skies

**NE** **NORTHEAST MONSOON (AMIHAN)**  
Cold winds from the northeast that bring rains over the eastern side of the country.

**TAIL-END OF A COLD FRONT**  
Extended zone of converging winds from east to northeast that often brings thunderstorms and rainshowers

**≡** **INTERTROPICAL CONVERGENCE ZONE (ITCZ)**  
Series of low pressure areas brought about by converging northeast (NE) and southeast (SE) winds that cause thunderstorms and rainshowers

**6** **3 to 5 TROPICAL CYCLONES**  
'Bagyo'; may refer to a tropical depression, tropical storm, severe tropical storm, typhoon, or super typhoon.

## RAINFALL CONDITION



**NEAR NORMAL**

+20% or -20% from the normal

Bulacan, Aurora, Metro Manila, Region 4-A and 4-b most parts of Bicol Region, Western Visayas and Cebu

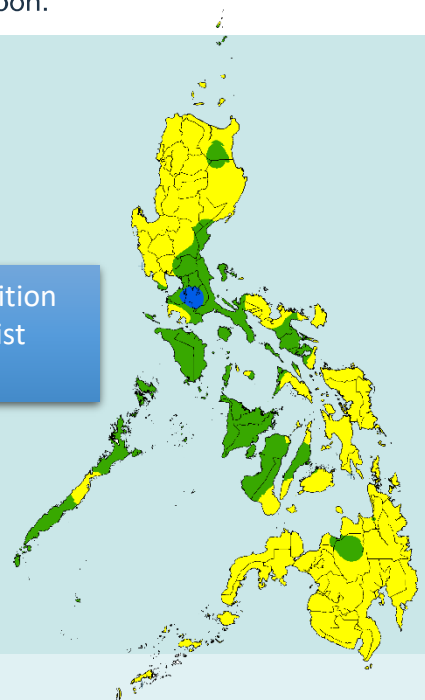


**BELOW NORMAL**

20%-60% reduction from the normal

Most parts of Luzon, some areas in Visayas and most parts of Mindanao

ENSO-neutral condition is expected to persist during the period.



## TEMPERATURE



Surface air temperatures are predicted to be slightly warmer to warmer than average during the season