



PAYONG PAGASA

SEASONAL CLIMATE OUTLOOK



Issued: 22 July 2020

OVERVIEW

Cool ENSO-neutral conditions are present in the tropical Pacific. However, near to slightly warmer SSTs were still observed in the western Pacific. The atmospheric indicators also show values within neutral levels. Most international climate models show that cool ENSO-neutral conditions will likely continue until the July -August-September 2020 season and ~50% to 55% probability for La Niña to develop before the end of the year.

July to September 2020 Outlook

The season suggests a continuation of cool ENSO-neutral conditions with SSTs decreasing toward weak La Niña levels.

WEATHER SYSTEMS THAT AFFECTED THE COUNTRY

L **LOW PRESSURE AREA (LPA)**
Areas of lowest pressure characterized by cloudiness and rainshowers; areas where a tropical cyclone can form



INTERTROPICAL CONVERGENCE ZONE (ITCZ)
Series of low pressure areas brought about by converging northeast (NE) and southeast (SE) winds that cause thunderstorms and rainshowers

(((H **RIDGE OF HIGH PRESSURE AREA (HPA)**
An extension of a high pressure area characterized by very light wind and clear skies

SW **SOUTHWEST MONSOON (HABAGAT)**
Warm moist winds from the southwest causing rains over the western portion of the country from May to September



- *predicted to be weaker than normal*
- *Monsoon breaks are also expected*

6 **Passage of 6 to 8 TROPICAL CYCLONES**
'Bagyo'; may refer to a tropical depression, tropical storm, severe tropical storm, typhoon, or super typhoon.

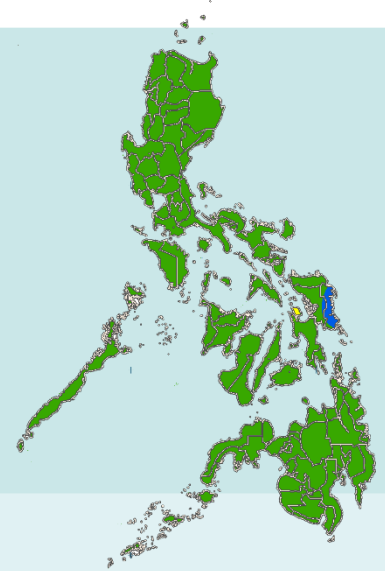
RAINFALL CONDITION

NEAR NORMAL
+20% or -20% from the normal

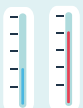
most parts of the country

BELOW NORMAL
20%-60% reduction from the normal

July 2020
most areas of Luzon, Bicol region and some parts of Visayas



TEMPERATURE



Most areas of the country in general may experience near to above average surface air temperatures.



PAYONG PAGASA SEASONAL CLIMATE OUTLOOK



Issued: 22 July 2020

October to December 2020 Outlook

Cool ENSO-neutral to weak La Nina conditions are expected during the last quarter of the year.

EXPECTED WEATHER SYSTEMS

L LOW PRESSURE AREA (LPA)
Areas of lowest pressure characterized by cloudiness and rainshowers; areas where a tropical cyclone can form

E EASTERLIES
Warm winds blowing from the east that may bring cloudiness over the eastern part of the country

(((H RIDGE OF HIGH PRESSURE AREA (HPA)
An extension of a high pressure area characterized by very light wind and clear skies

NE NORTHEAST MONSOON (AMIHAN)
Cold winds from the northeast that bring rains over the eastern side of the country.

TAIL-END OF A COLD FRONT
Extended zone of converging winds from east to northeast that often brings thunderstorms and rainshowers

INTERTROPICAL CONVERGENCE ZONE (ITCZ)
Series of low pressure areas brought about by converging northeast (NE) and southeast (SE) winds that cause thunderstorms and rainshowers

4 to 6 TROPICAL CYCLONES
'Bagyo'; may refer to a tropical depression, tropical storm, severe tropical storm, typhoon, or super typhoon.

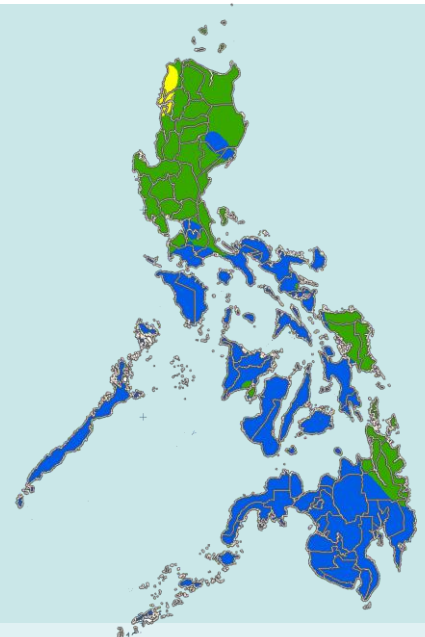
RAINFALL CONDITION

NEAR NORMAL
+20% or -20% from the normal

most provinces in Luzon

ABOVE NORMAL
120% greater than the normal

most areas of Visayas and Mindanao



TEMPERATURE



Surface air temperatures are predicted to be near to warmer than average in most parts of the country.