



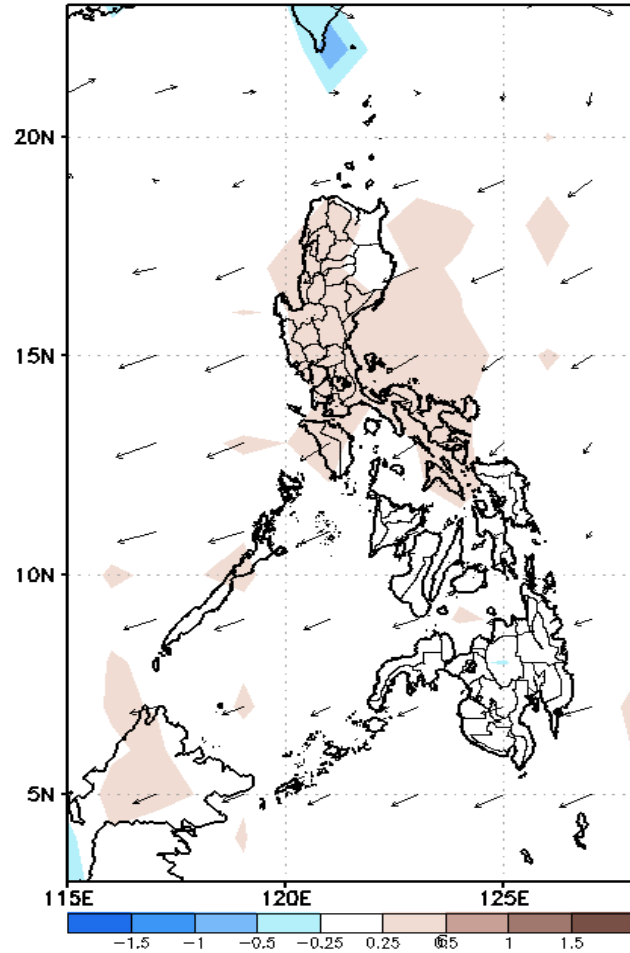
Week 1 & Week 2 Forecast for the Philippines using GEFS Model



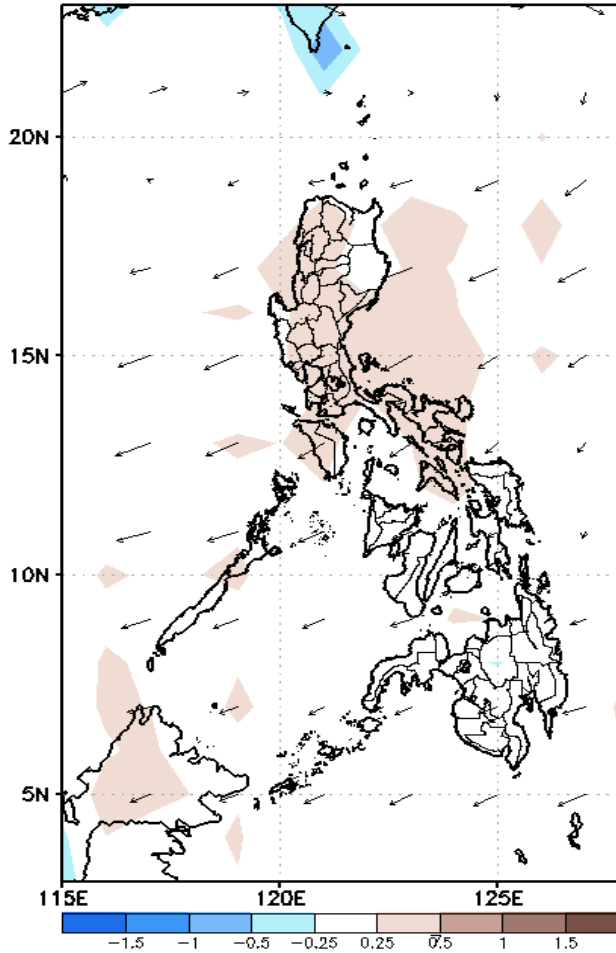
GEFS Week-1 Forecasts: Divergence & Wind Anomaly

Week 1: June 01-07, 2020

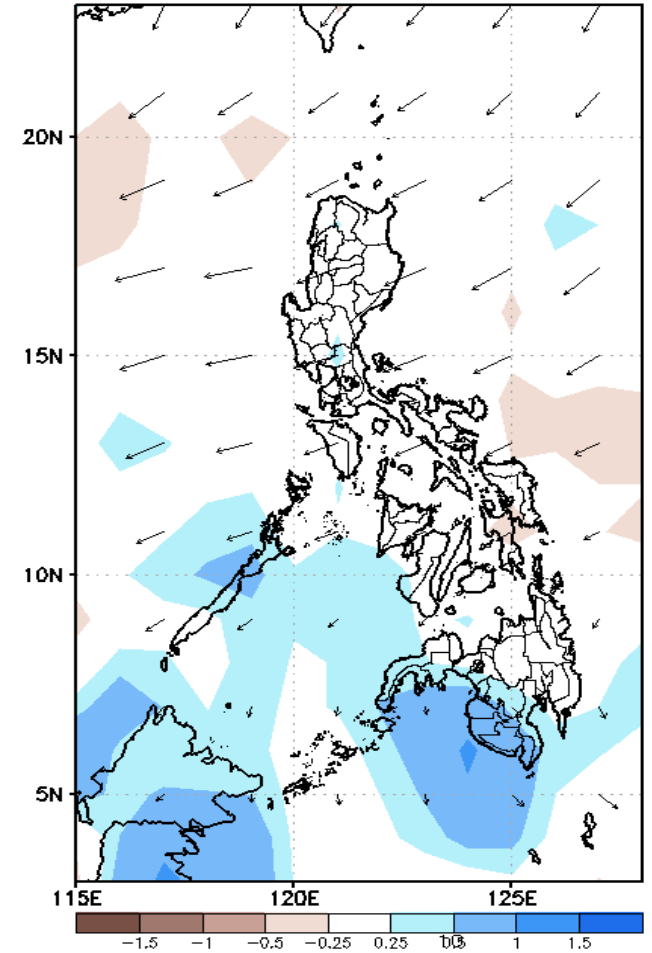
GEFS Week-1 850-hPa Divergence and Wind Anom
Valid: 20200601 - 20200607



GEFS Week-1 700-hPa Divergence and Wind Anom
Valid: 20200601 - 20200607



GEFS Week-1 200-hPa Divergence and Wind Anom
Valid: 20200601 - 20200607



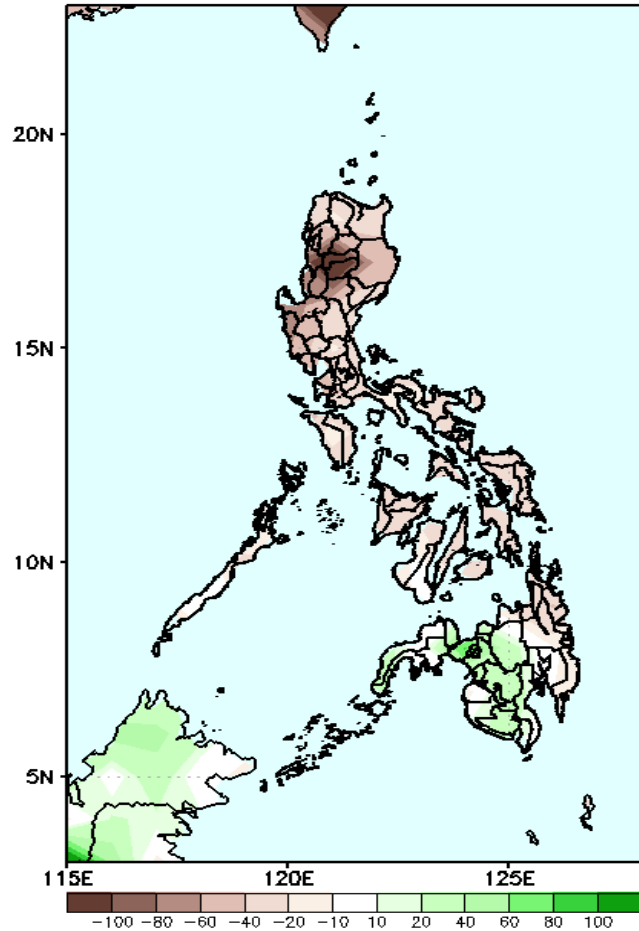
Upper level (200 hPa) Divergence suggest likelihood of precipitation in Palawan, Zamboanga Peninsula and west-central Mindanao. Easterlies affecting most parts of the country during the forecast period.



Precipitation Anomaly and Exceedance Probability > 25/50 mm

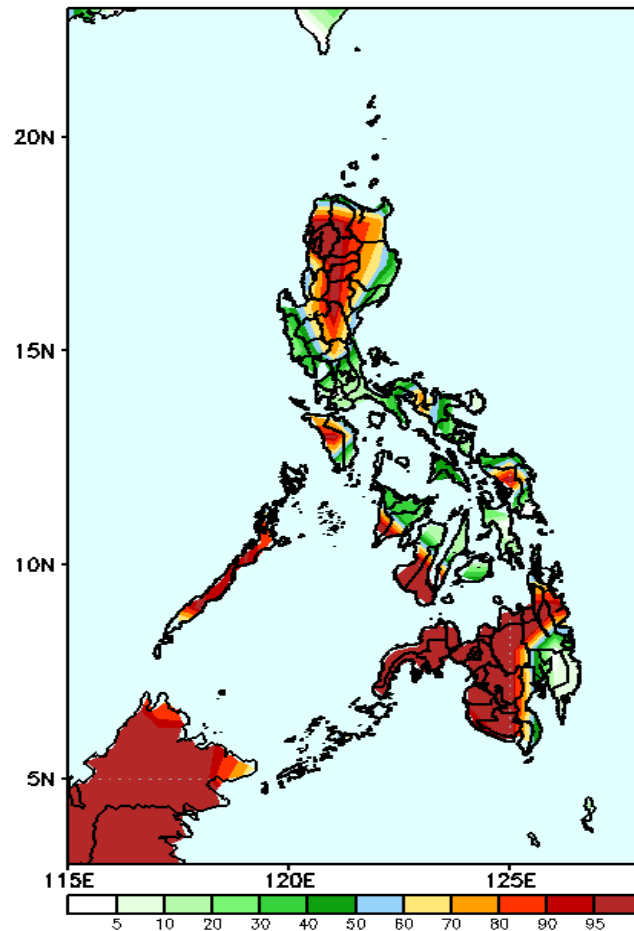
Week 1: June 01-07, 2020

GEFS Week-1 Precip Anomaly
Valid: 20200601 - 20200607



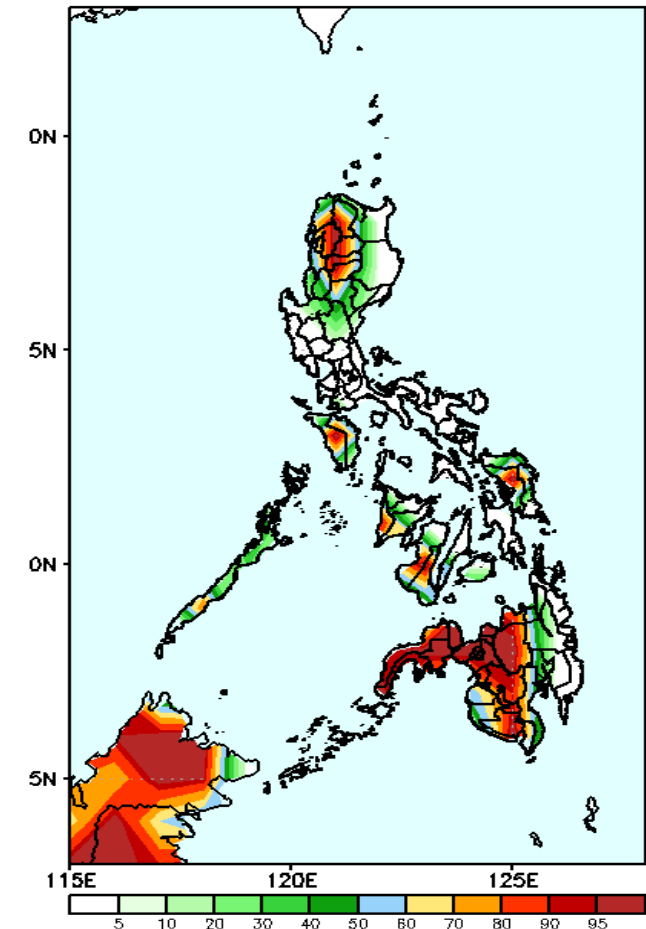
Rainfall deficit of up to 100mm in Luzon and Visayas is expected while increase of rainfall of up to 30mm in Mindanao is more likely during the forecast period.

GEFS Week-1 Exceedance Prob. > 25mm
Valid: 20200601 - 20200607



High probability of rainfall to exceed 25mm in northern and central parts of Luzon, Mindoro, western parts of Region 6 & 7 and in most parts of Mindanao (except Davao Region) while less likely for the rest of the country during the forecast period.

GEFS Week-1 Exceedance Prob. > 50mm
Valid: 20200601 - 20200607

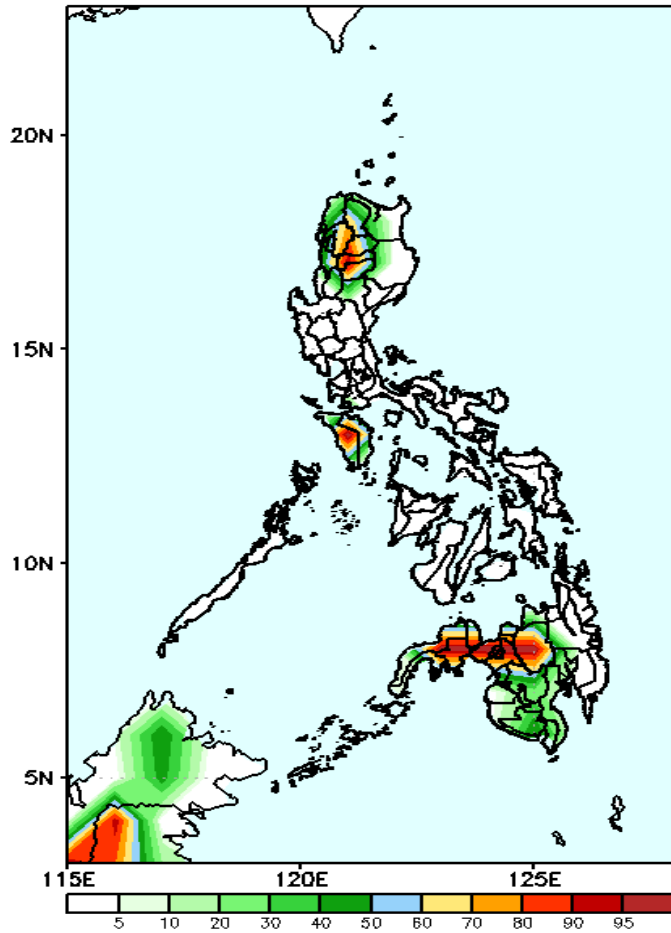


High probability of rainfall to exceed 50mm in northeastern parts of Luzon, Mindoro, western parts of Region 6 & 7 and western Mindanao (including Zamboanga Peninsula) while less likely for the rest of the country during the forecast period.

Exceedance Probability > 100/150/200 mm

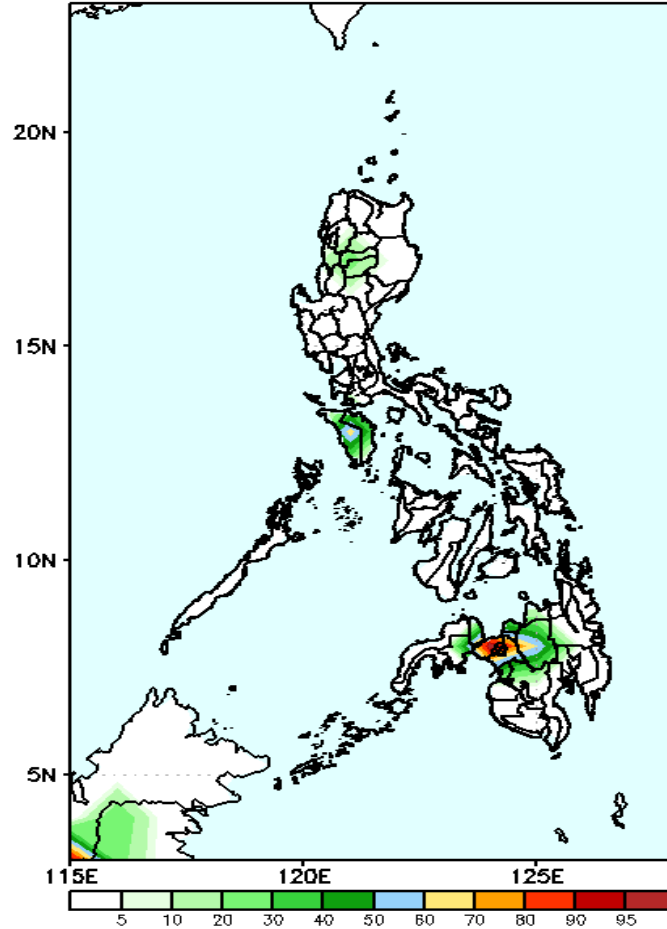
Week 1: June 01-07, 2020

GEFS Week-1 Exceedance Prob. > 100mm
Valid: 20200601 - 20200607



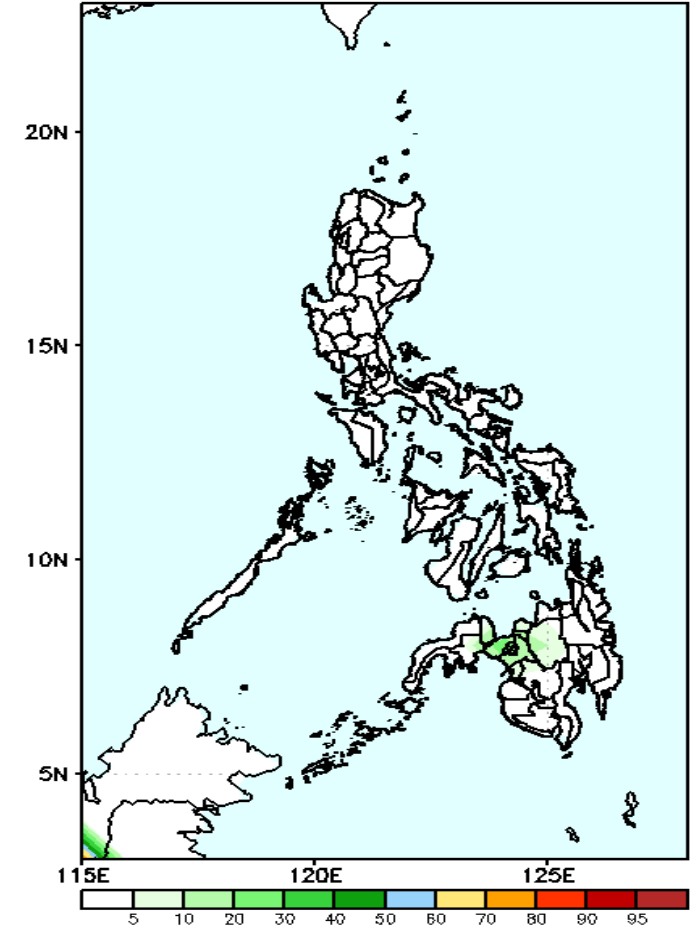
50-90% probability of rainfall to exceed 100mm in Cordillera Region, Mindoro, northern Mindanao and Zamboanga del Sur & Norte while less likely for the rest of the country during the forecast period.

GEFS Week-1 Exceedance Prob. > 150mm
Valid: 20200601 - 20200607



60-90% probability of rainfall to exceed 150mm in Lanao provinces while less likely for the rest of the country during the forecast period.

GEFS Week-1 Exceedance Prob. > 200mm
Valid: 20200601 - 20200607



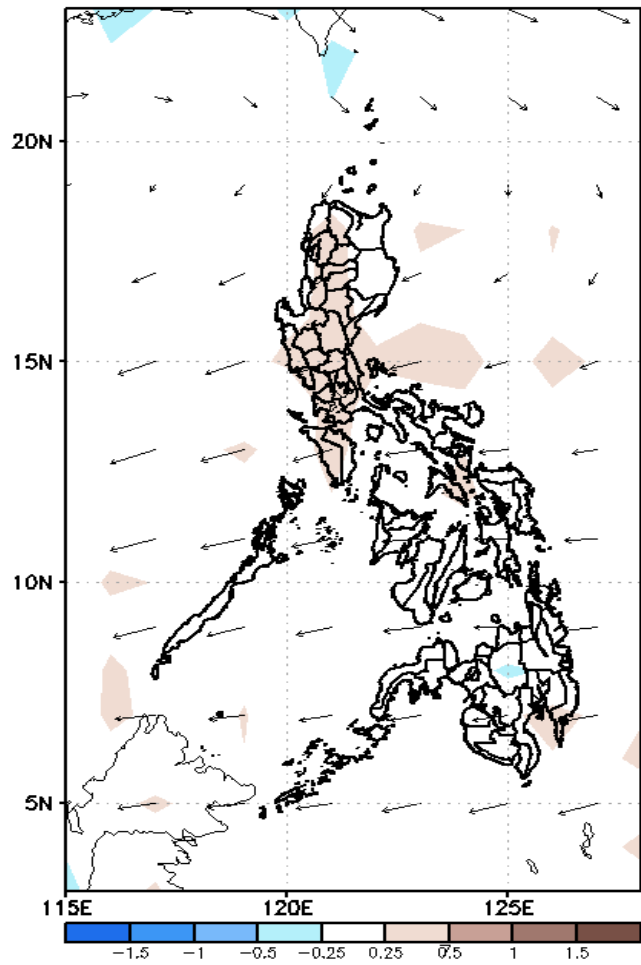
Less probability of rainfall to exceed 200mm in most parts of the country during the forecast period.



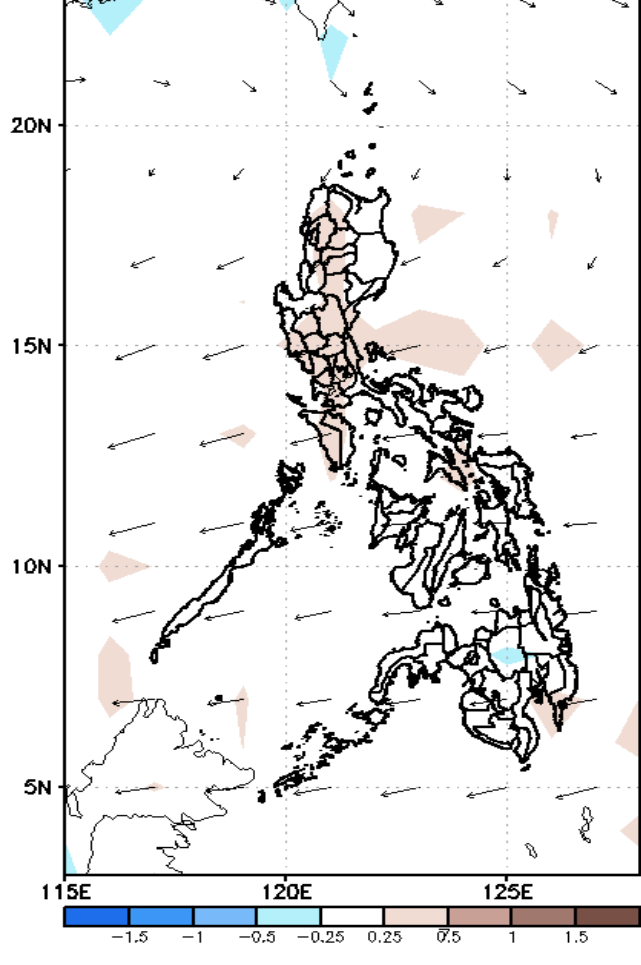
GEFS Week-2 Forecasts: Divergence & Wind Anomaly

Week 2: June 08-14, 2020

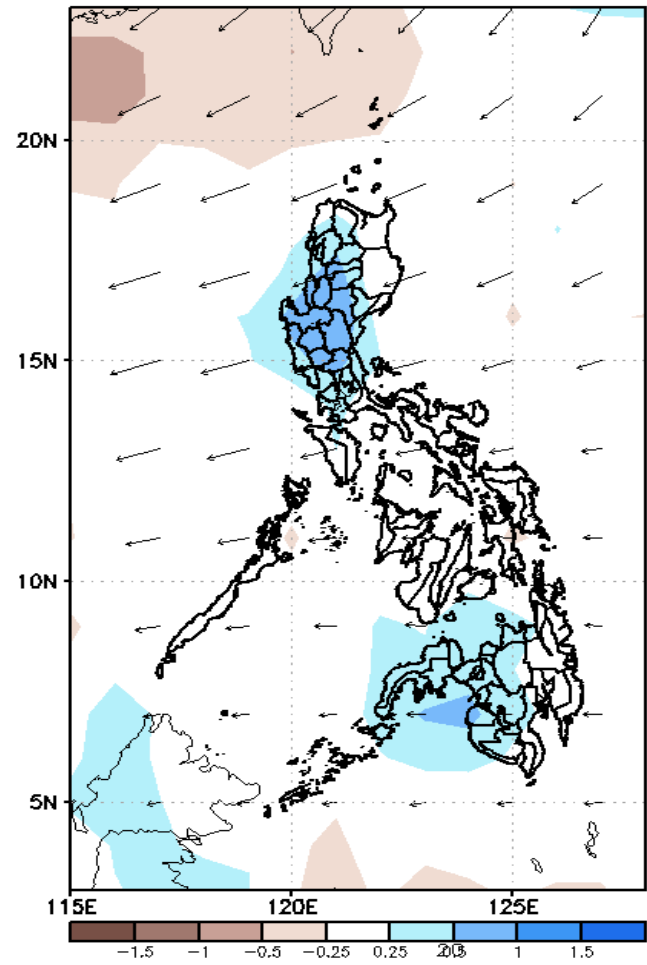
GEFS Week-2 850-hPa Divergence and Wind Anomaly
Valid: 20200608 - 20200614



GEFS Week-2 700-hPa Divergence and Wind Anomaly
Valid: 20200608 - 20200614



GEFS week-2 200-hPa Divergence and Wind Anomaly
Valid: 20200608 - 20200614



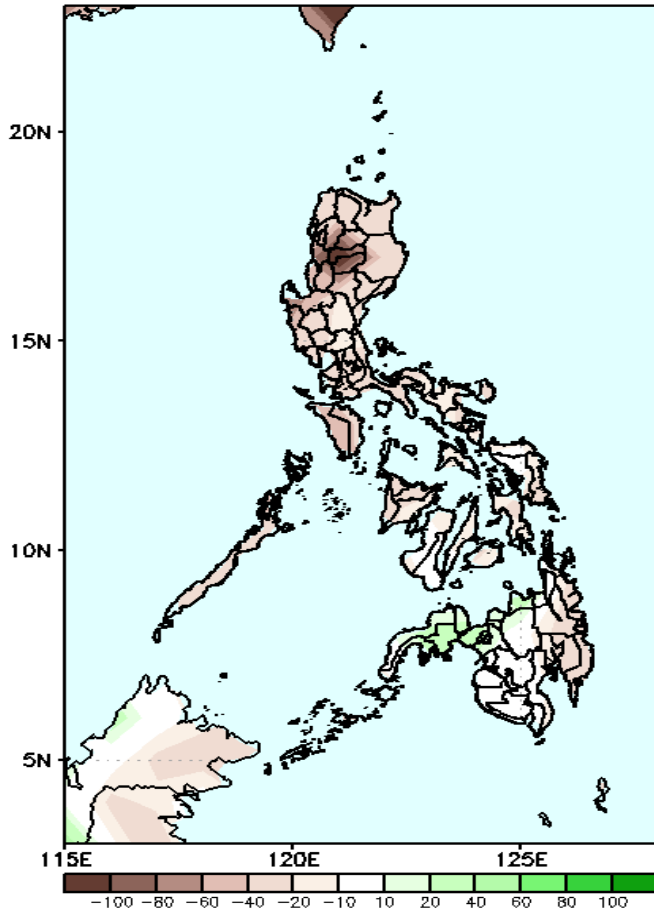
Upper level (200 hPa) Divergence suggest likelihood of precipitation in most parts of western and central Luzon and most parts of of Mindanao (except the eastern parts) . Easterlies affecting most parts of the country during the forecast period.



Precipitation Anomaly and Exceedance Probability > 25/50 mm

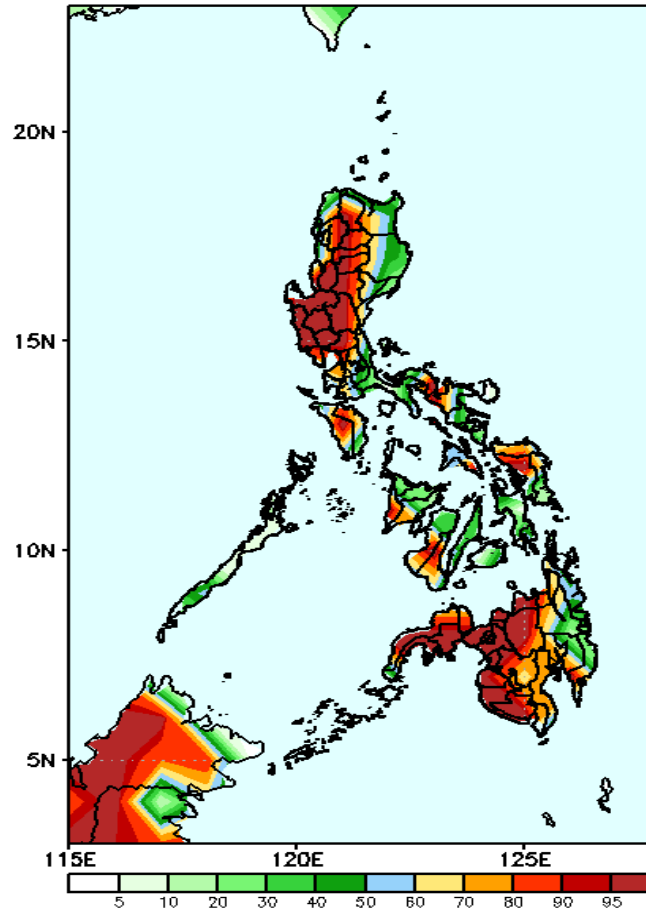
Week 2: June 08-14, 2020

GEFS Week-2 Precip Anomaly
Valid: 20200608 - 20200614



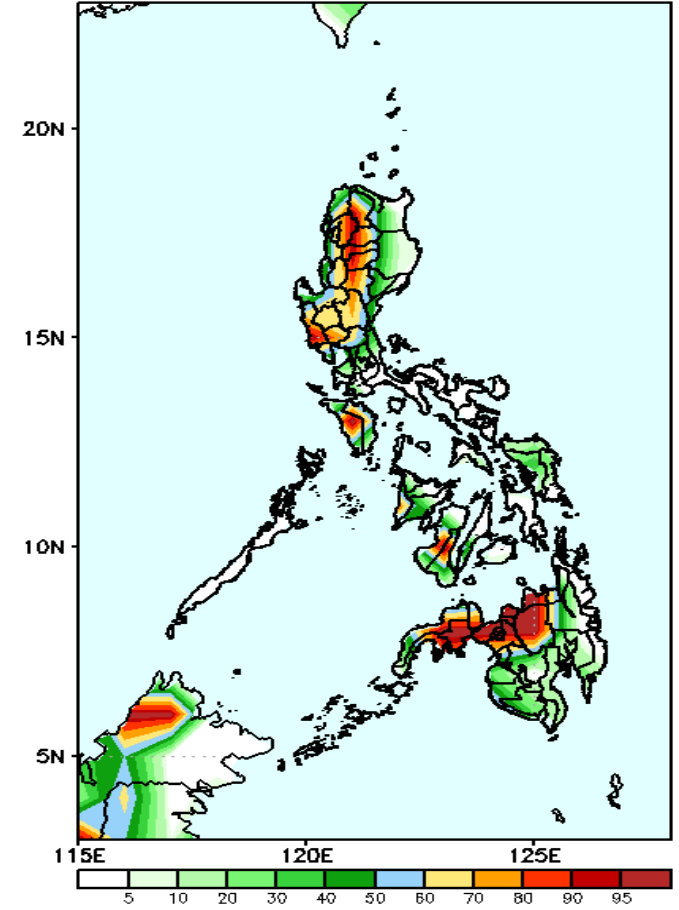
Rainfall deficit of up to 80mm is expected in Luzon while up to 20mm rainfall deficit for the rest of the country during the forecast period.

GEFS Week-2 Exceedance Prob. > 25mm
Valid: 20200608 - 20200614



High probability of rainfall to exceed 25mm in most parts of Luzon (except Cagayan Valley), Mindoro, western parts of Region 6 & 7, Samar Provinces and in most parts of Mindanao (except CARAGA & Davao Region) while less likely for the rest of the country during the forecast period.

GEFS Week-2 Exceedance Prob. > 50mm
Valid: 20200608 - 20200614

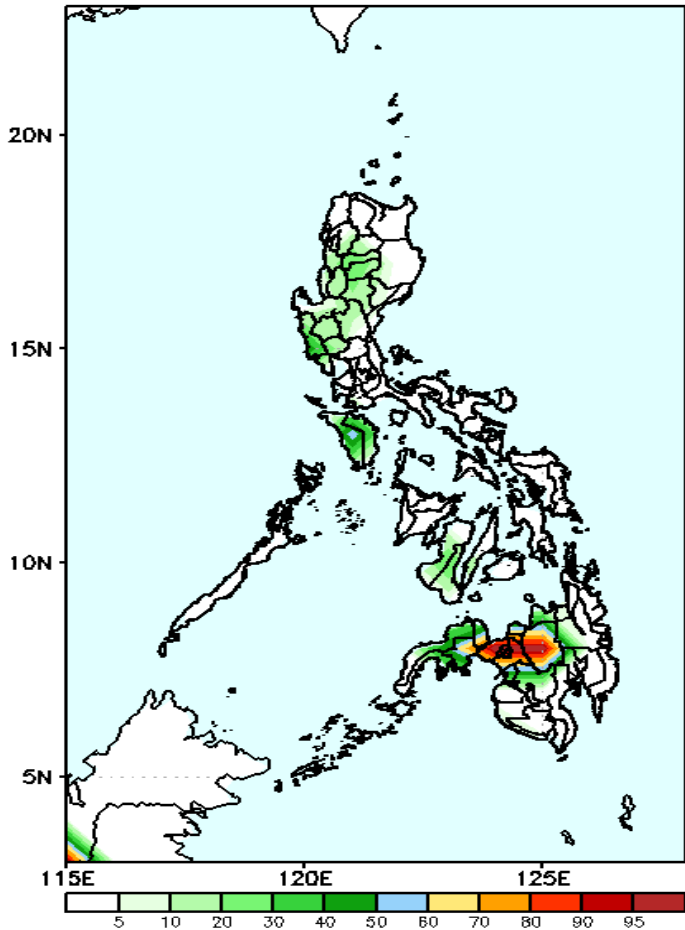


50-95% probability of rainfall to exceed 50mm in western parts of Luzon, Mindoro, in northern Mindanao and Zamboanga del Norte & Sur while less likely for the rest of the country during the forecast period.

Exceedance Probability > 100/150/200 mm

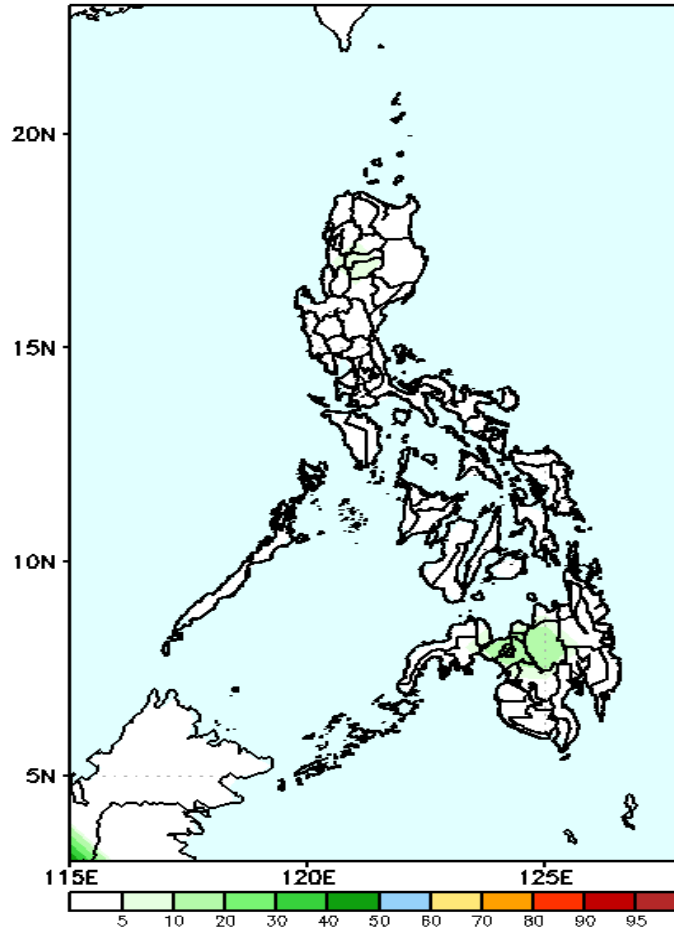
Week 2: May June 08-14, 2020

GEFS Week-2 Exceedance Prob. > 100mm
Valid: 20200608 - 20200614



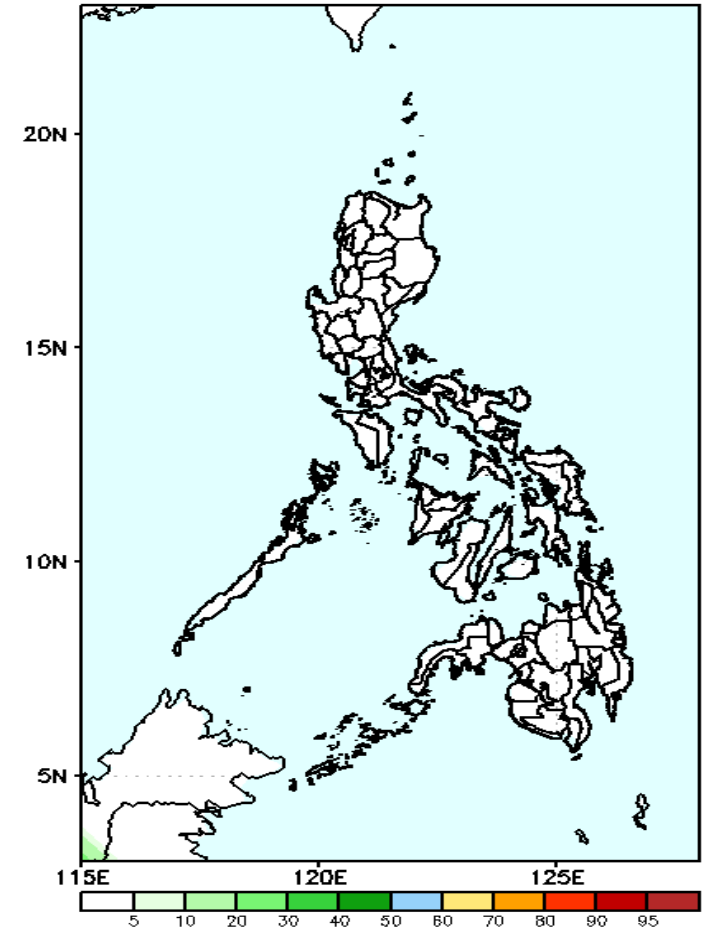
70-95% probability of rainfall to exceed 100mm northern Mindanao while less likely for the rest of the country during the forecast period.

GEFS Week-2 Exceedance Prob. > 150mm
Valid: 20200608 - 20200614



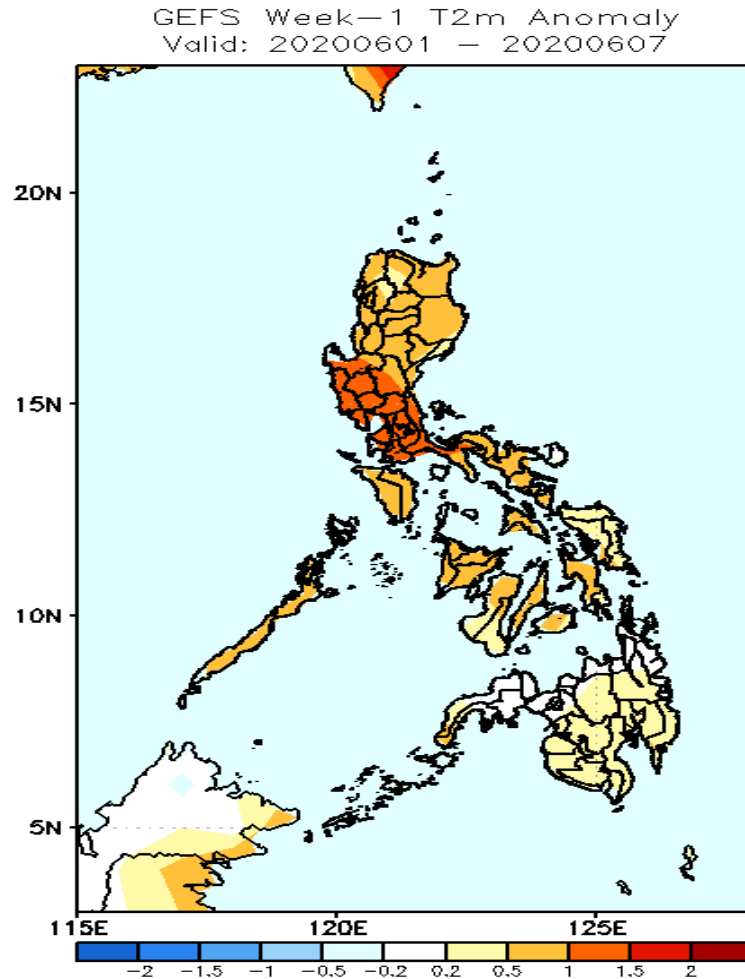
Less probability of rainfall to exceed 150mm in most parts of the country during the forecast period.

GEFS Week-2 Exceedance Prob. > 200mm
Valid: 20200608 - 20200614



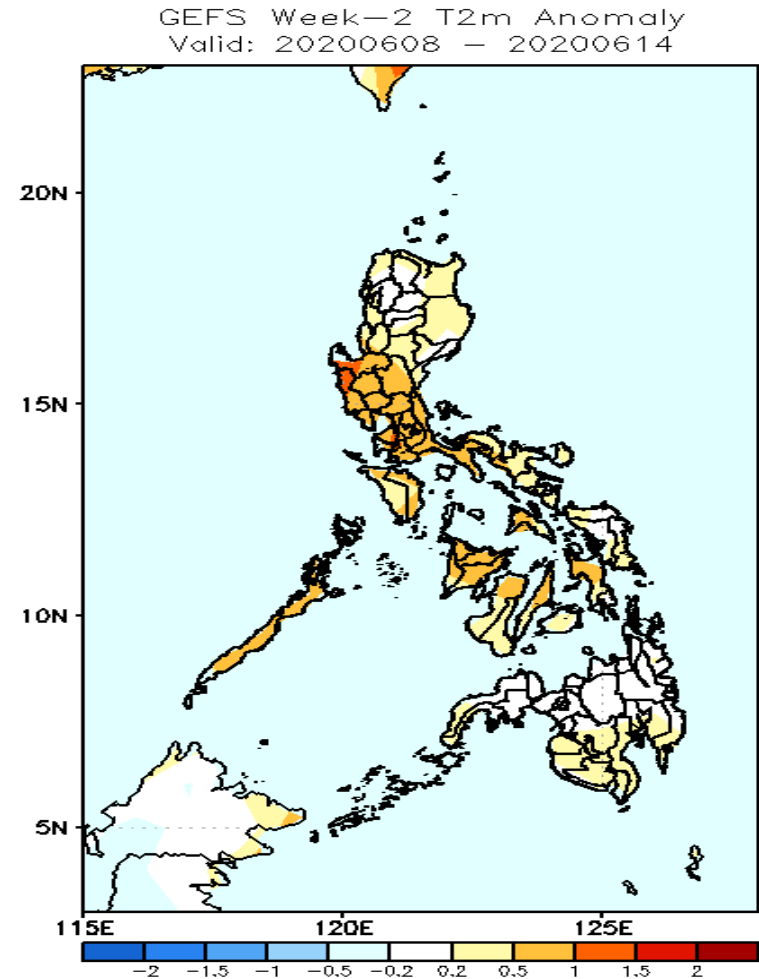
Less probability of rainfall to exceed 200mm in most parts of the country during the forecast period.

GEFS Week-1 & 2 Forecasts: T2m Anomaly



2m Temperature Week 1: June 01-07, 2020

Slightly warmer to warmer than average surface air temperature will likely experience in most parts of Luzon and Visayas while average surface air temperature is expected in Mindanao during the forecast period.



2m Temperature Week 2: June 08-14, 2020

Average to slightly warmer than average surface air temperature will likely experience in most parts of the country during the forecast period.