



**USAID**  
FROM THE AMERICAN PEOPLE



**Turkish State  
Meteorological Service**

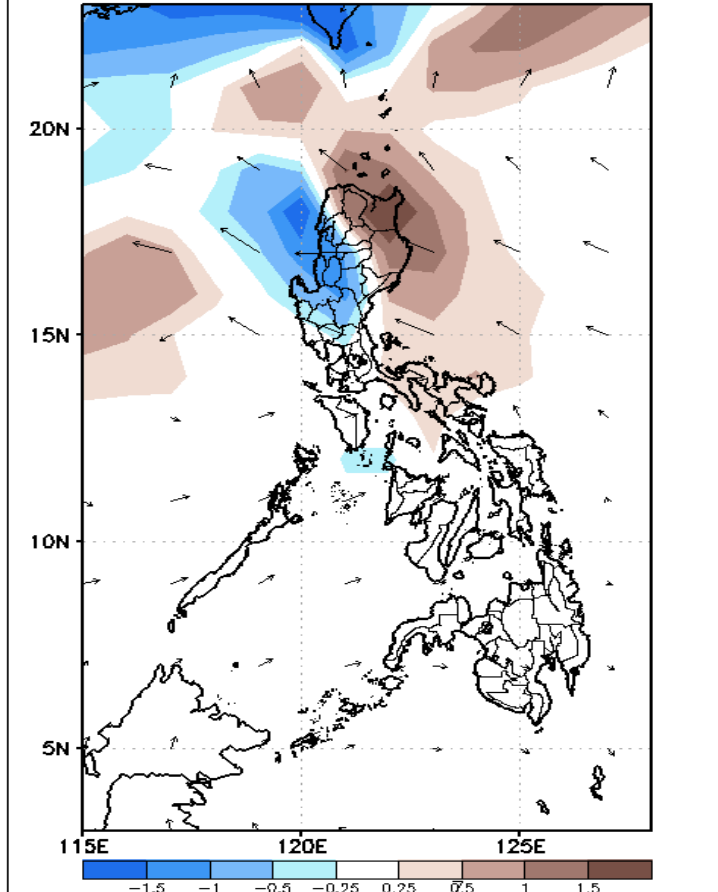
# Week 1 & Week 2 Forecast for the Philippines using GEFS Model



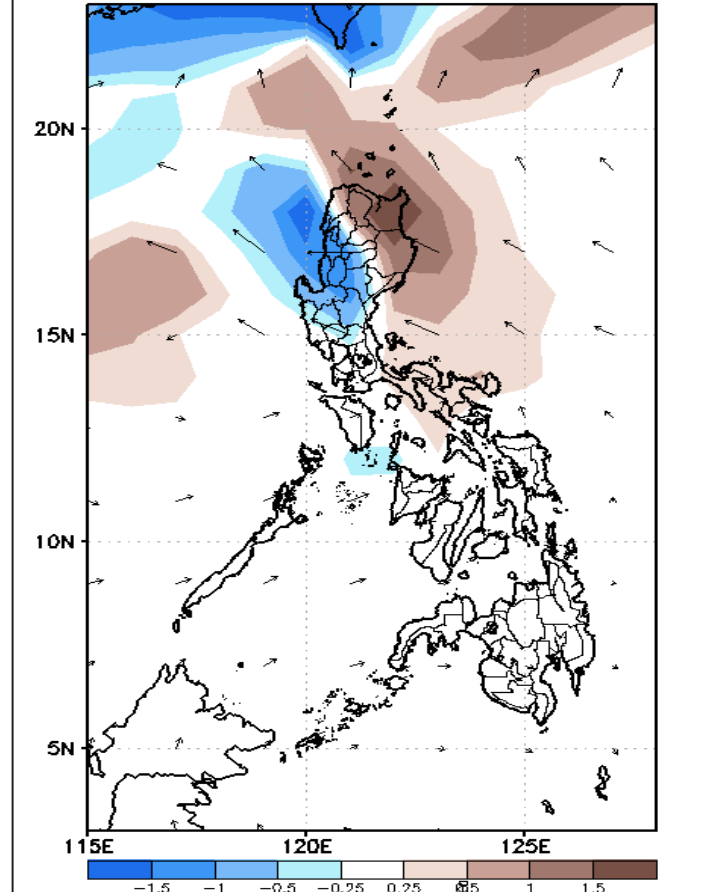
# GEFS Week-1 Forecasts: Divergence & Wind

Week 1: Dec 3 - 9, 2019

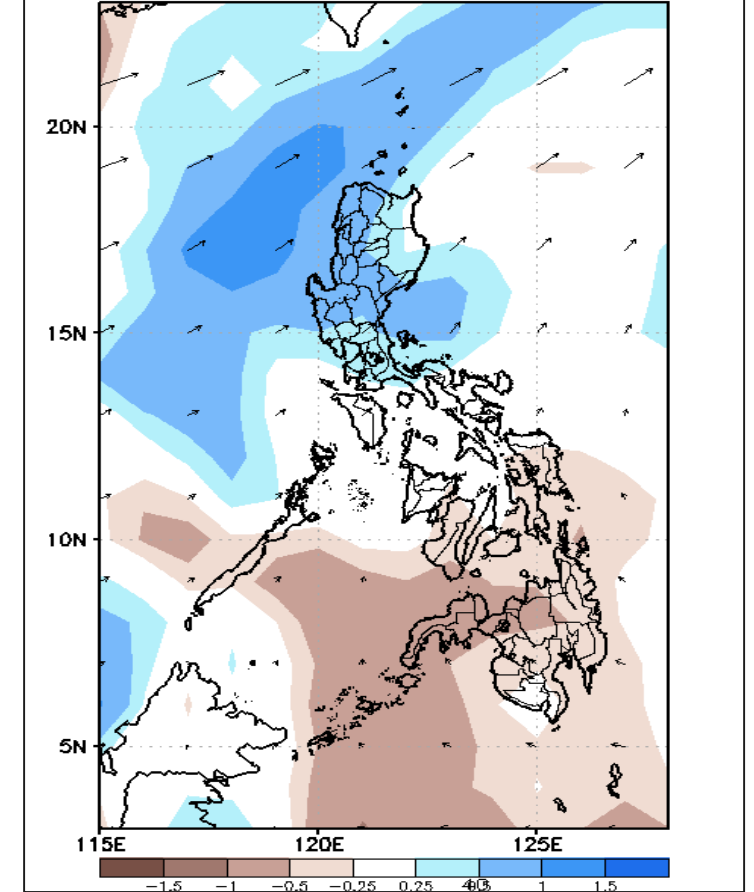
GEFS Week-1 850-hPa Divergence and Wind  
Valid: 20191203 - 20191209



GEFS Week-1 700-hPa Divergence and Wind  
Valid: 20191203 - 20191209



GEFS Week-1 200-hPa Divergence and Wind  
Valid: 20191203 - 20191209

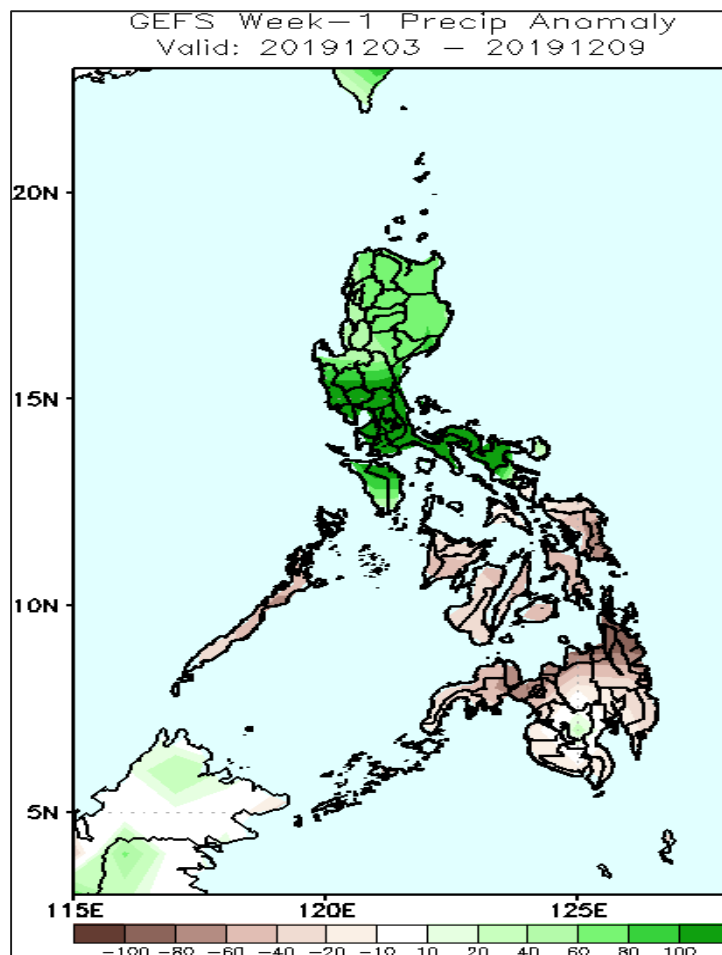


Low level (850 hPa) Divergence (Brown shaded color) suggest likelihood of heavy precipitation in most parts of Luzon and northern Visayas during the forecast period. Moreover a cyclonic wind pattern is affecting Luzon and Visayas during the forecast period.

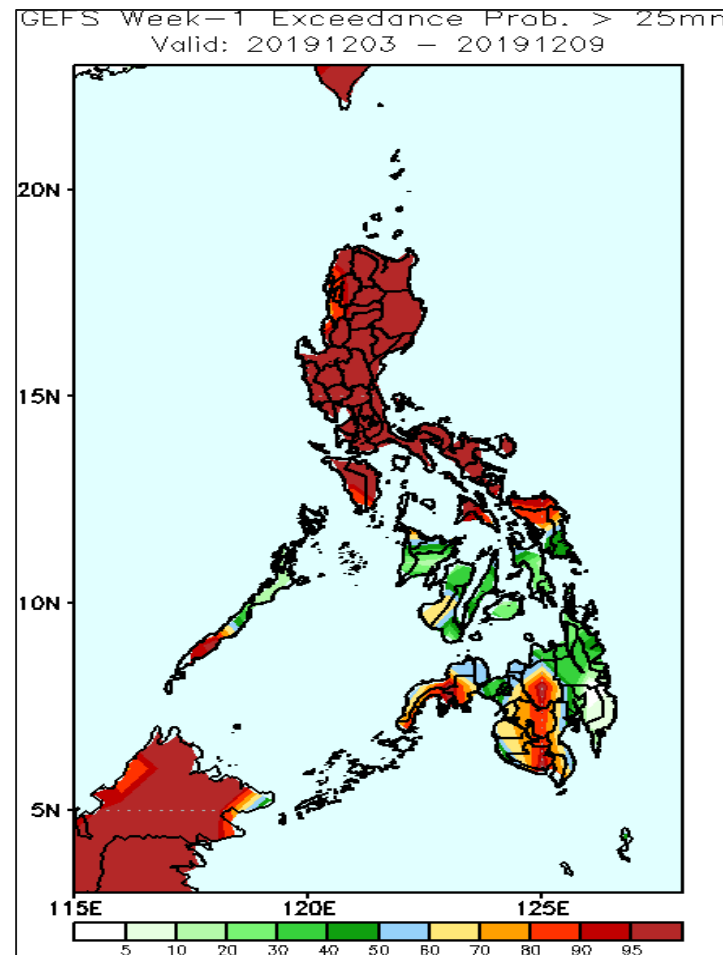


# Precipitation Anomaly and Exceedance Probability > 25/50 mm

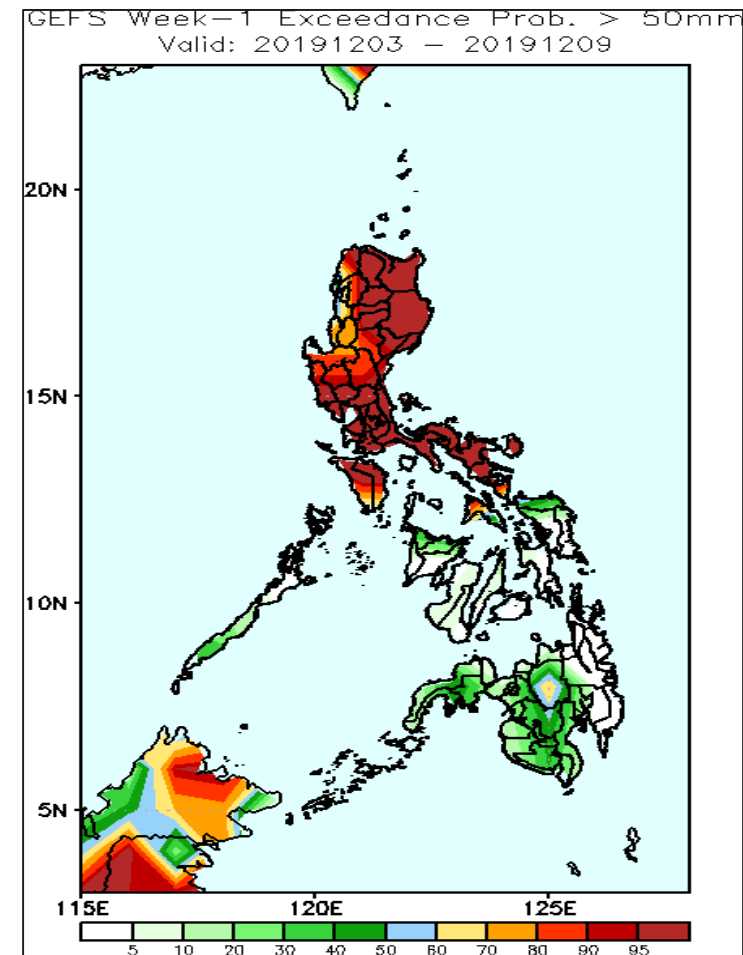
Week 1: Dec 3 - 9, 2019



Increase of rainfall up to 100 mm in Luzon and northern Samar is expected while the rest of the country will likely have a rainfall deficit of up to 100 mm.



High probabilities for rainfall exceeding 25mm in most parts of Luzon, Mindoro, Masbate, Samar provinces, Zamboanga del Sur and central and southern Mindanao while less likely for the rest of the country.



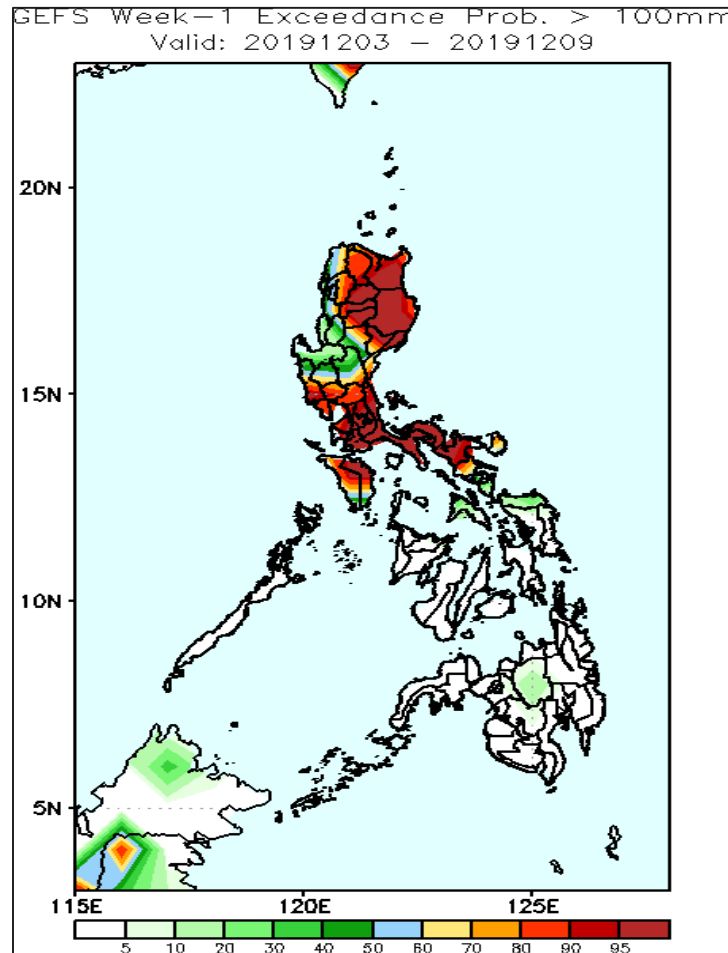
High probabilities for rainfall exceeding 50mm in most parts of Luzon and Mindoro while less likely for the rest of the country.

ig  
SA

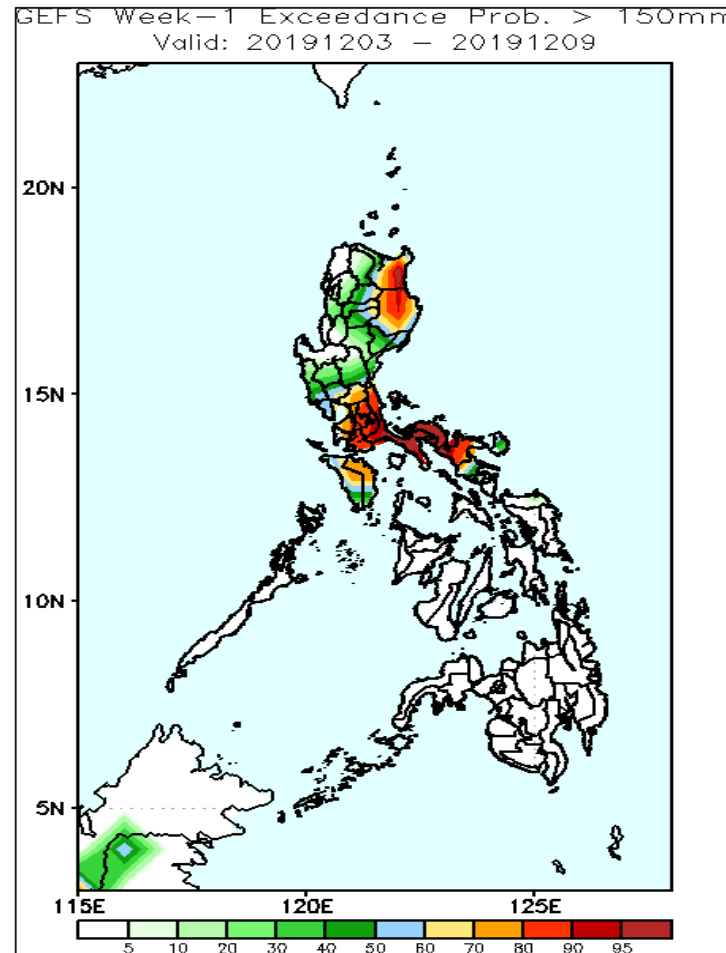


# Exceedance Probability > 100/150/200 mm

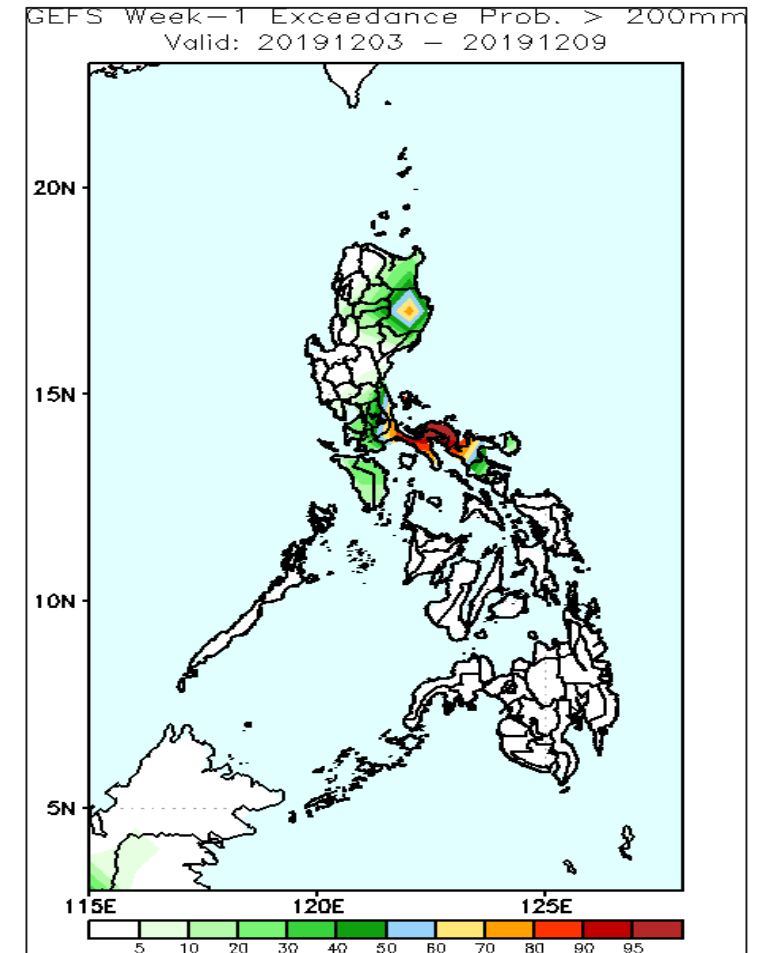
Week 1: Dec 3-9, 2019



High probabilities for rainfall exceeding 100mm in most parts of northern and southern Luzon while less likely for the rest of the country.



High probabilities for rainfall exceeding 150mm in eastern and southern Luzon while less likely for the rest of the country.

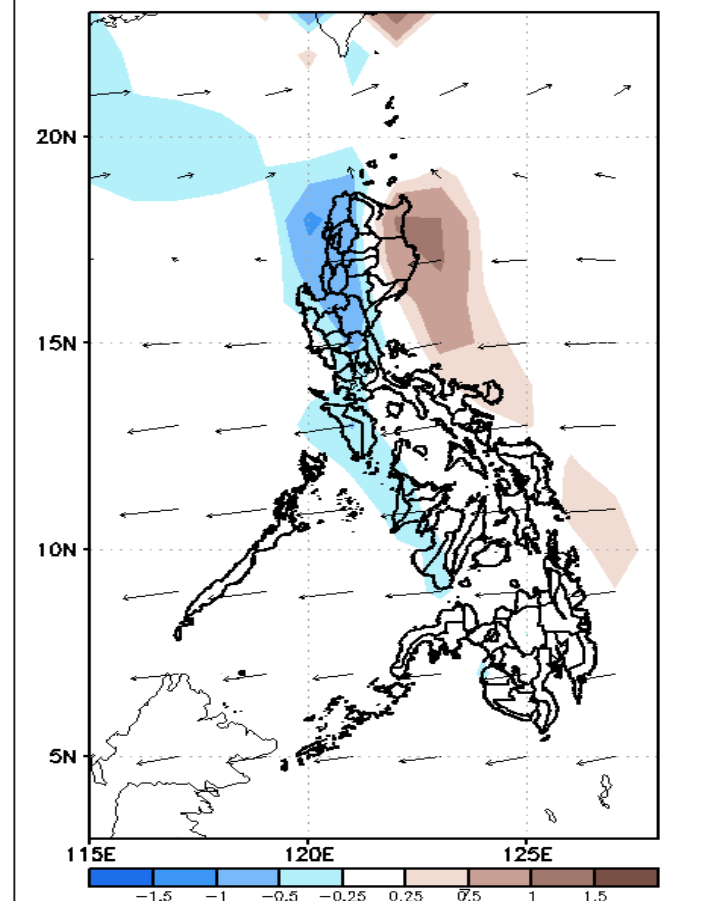


High probabilities of rainfall to exceed 200 mm in Camarines Norte and Camarines Sur and 60-80% in Isabela while less likely for the rest of the country.

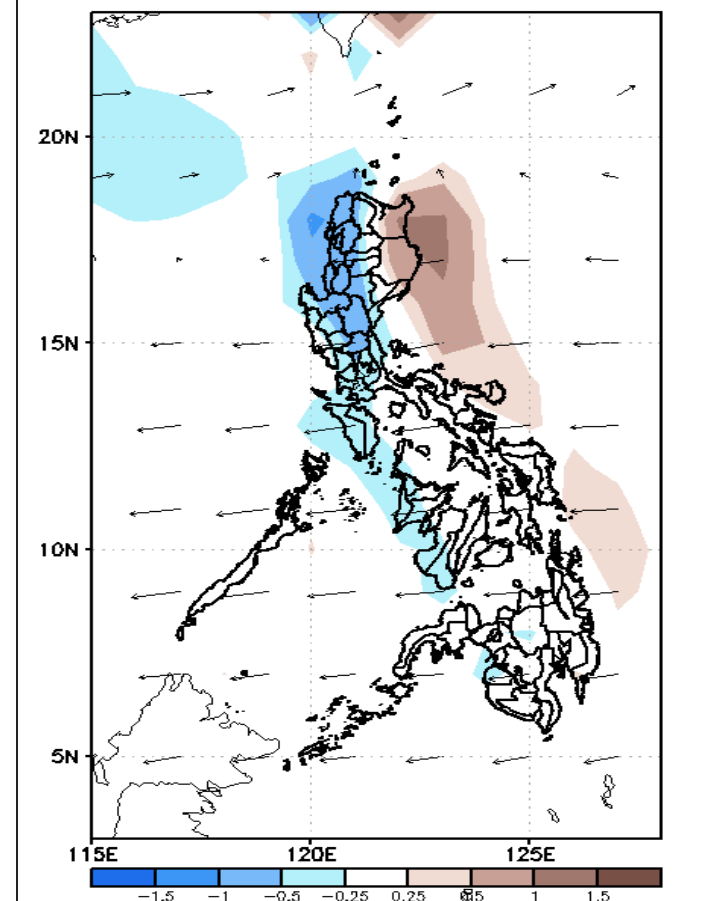
# GEFS Week-2 Forecasts: Divergence & Wind

Week 2: Dec 10 - 16, 2019

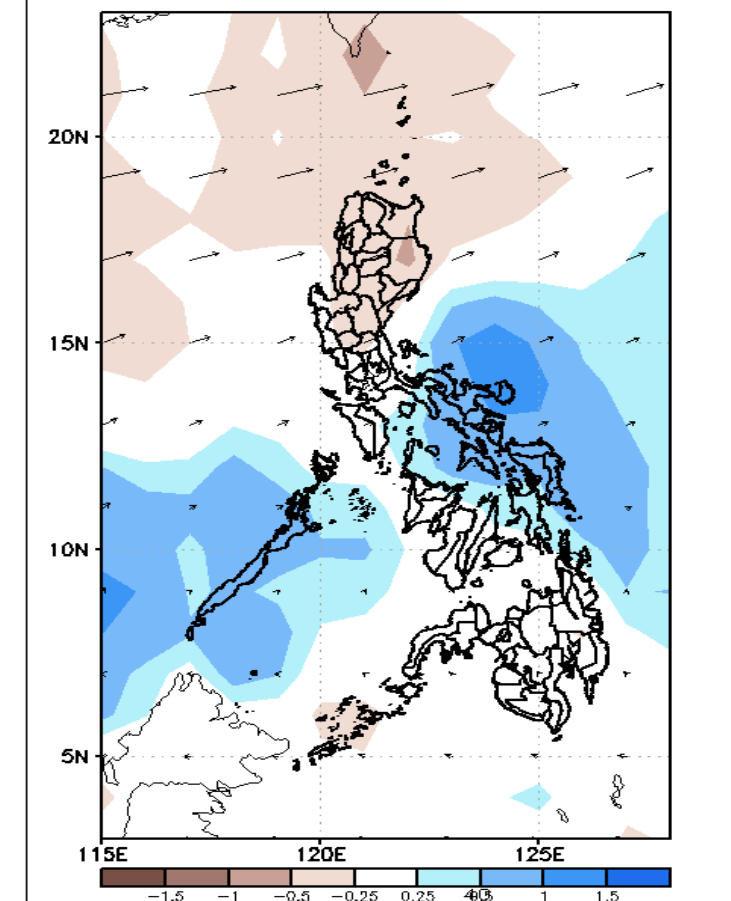
GEFS Week-2 850-hPa Divergence and Wind  
Valid: 20191210 - 20191216



GEFS Week-2 700-hPa Divergence and Wind  
Valid: 20191210 - 20191216



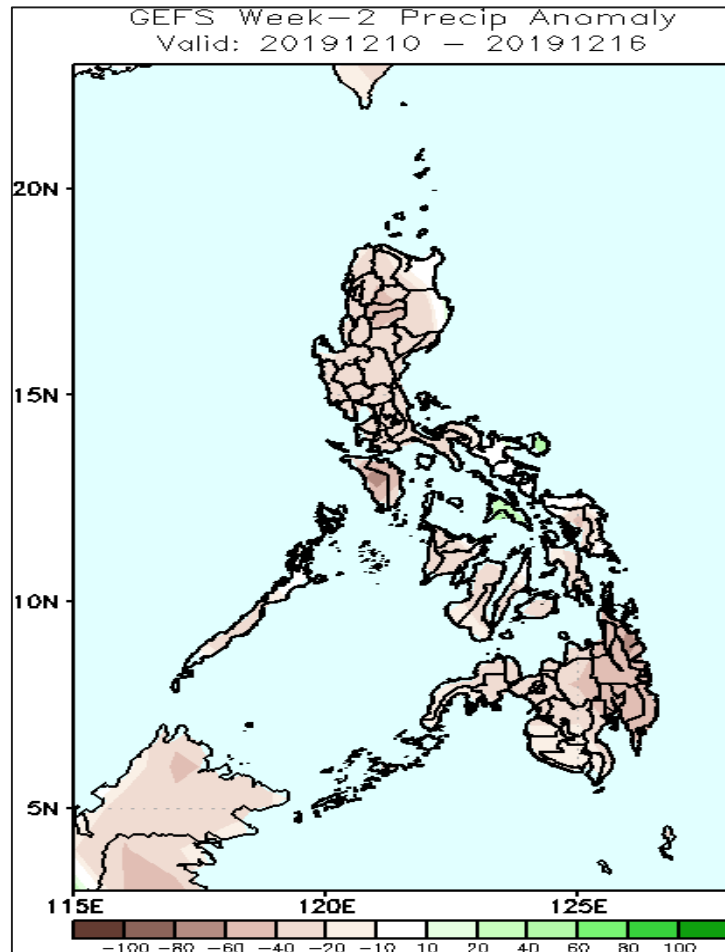
GEFS week-2 200-hPa Divergence and Wind  
Valid: 20191210 - 20191216



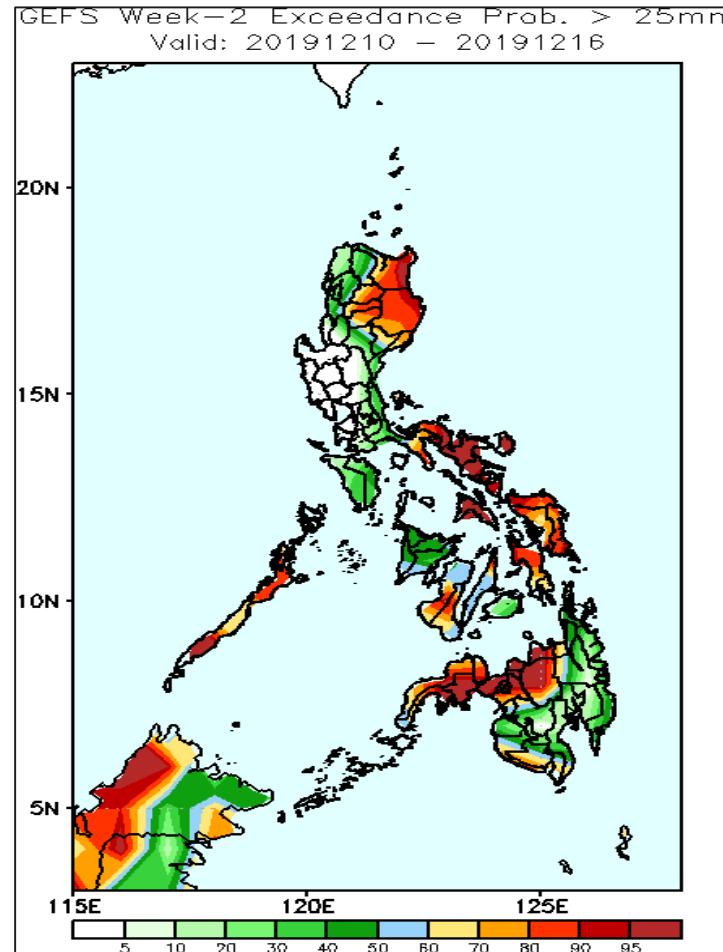
Low level (850 hPa) Divergence (Brown shaded color) suggest likelihood of precipitation in northern and central Luzon.  
Easterly winds affecting most parts Luzon during the forecast period.

# Precipitation Anomaly and Exceedance Probability > 25/50 mm

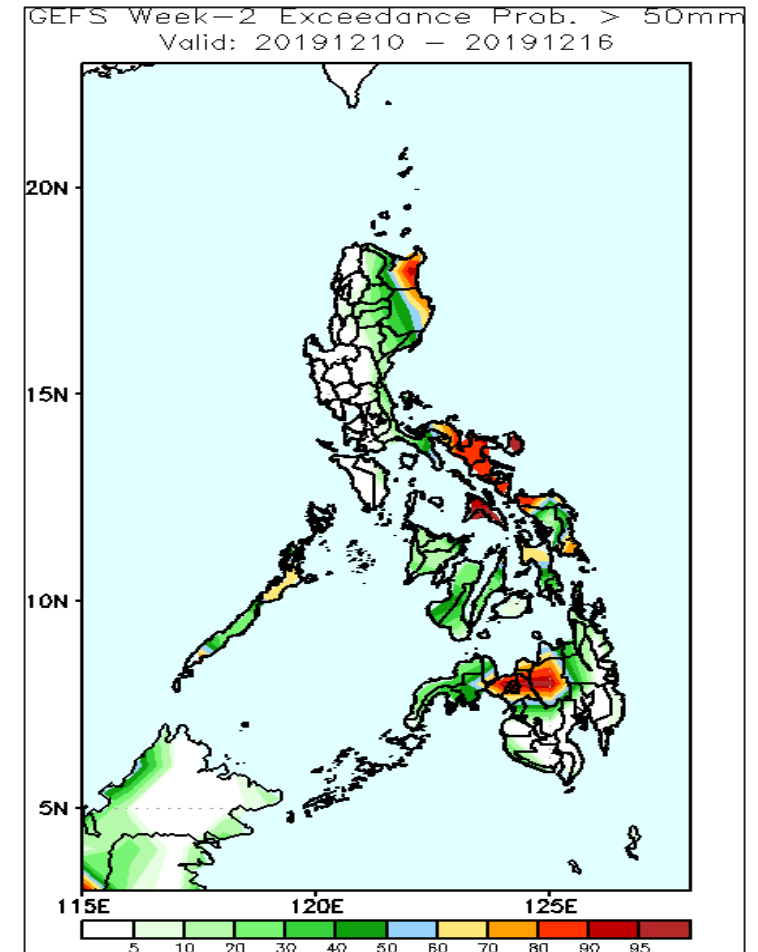
Week 2: Dec 10 - 16, 2019



Most parts of the country will likely to have a rainfall deficit of up to 80 mm in most parts of the country is expected.



High probabilities for rainfall exceeding 25mm in eastern parts of Luzon and Visayas, Palawan, Panay Island and northern Mindanao while less likely for the rest of the country.



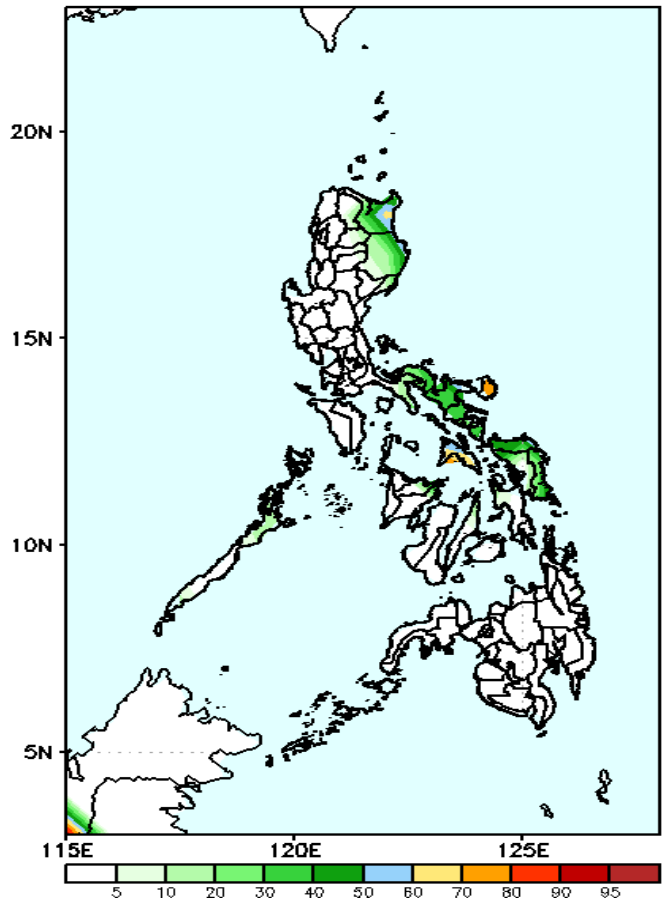
High probabilities of rainfall to exceed 50 mm in Bicol region, northern Mindanao and 60-90% in Isabela and Cagayan while less likely for the rest of the country.



# Exceedance Probability > 100/150/200 mm

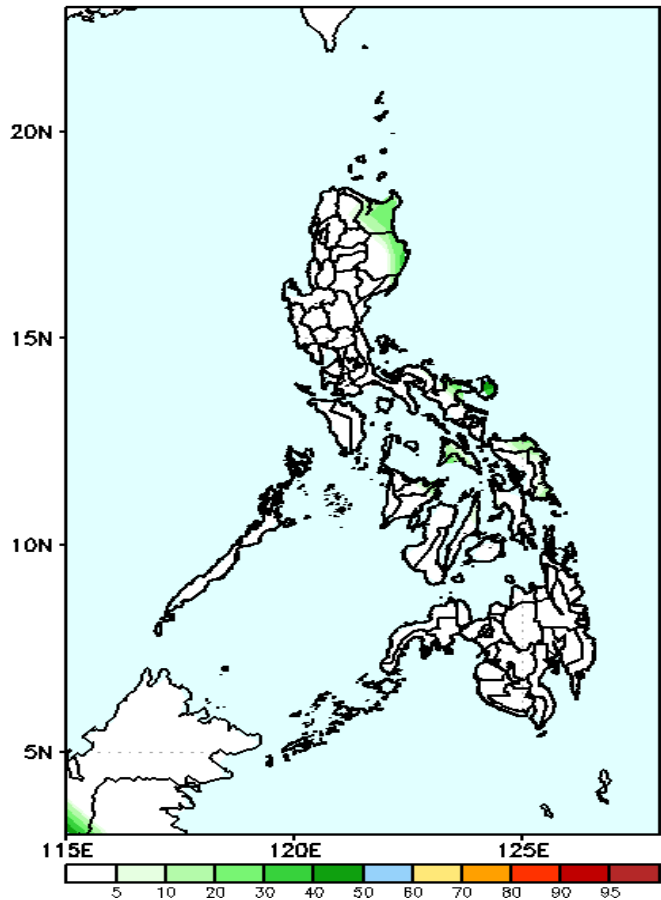
## Week 2: Dec 10 - 16, 2019

GEFS Week-2 Exceedance Prob. > 100mm  
Valid: 20191210 - 20191216



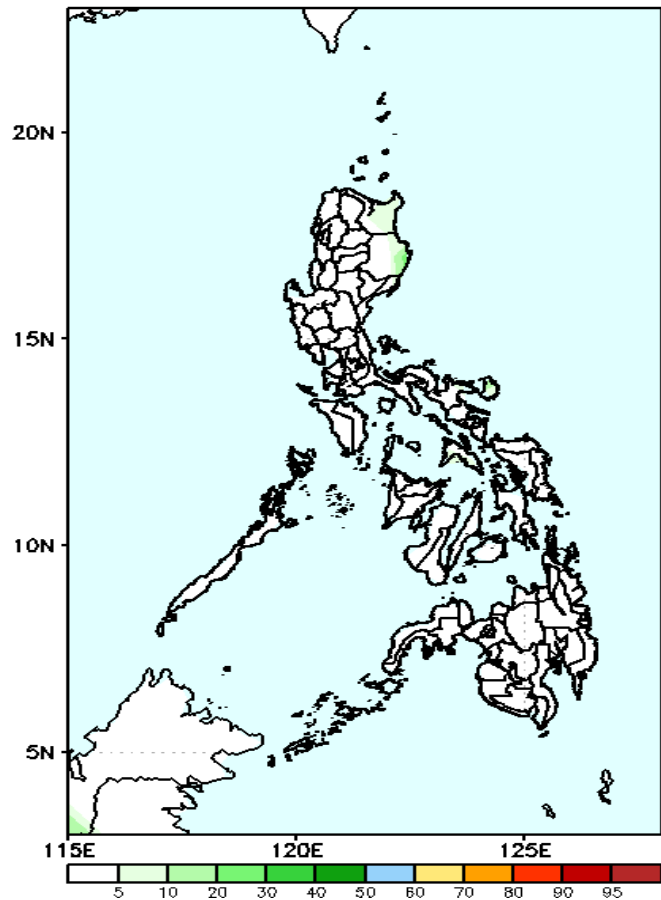
Less probability of rainfall to exceed 100mm in most parts of the country except in Catanduanes.

GEFS Week-2 Exceedance Prob. > 150mm  
Valid: 20191210 - 20191216



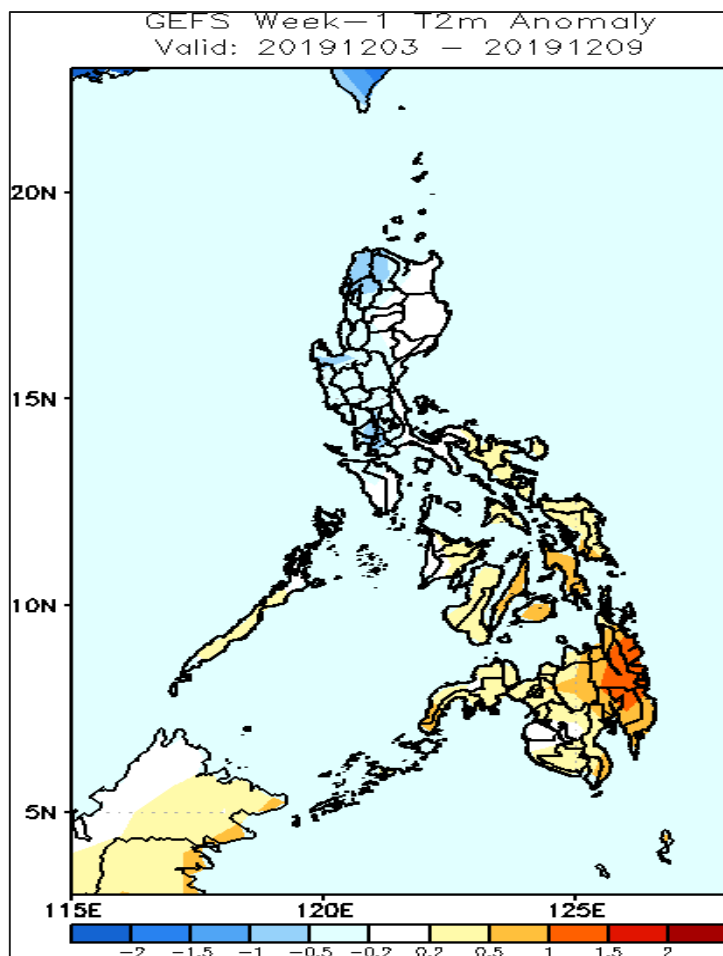
Less probability of rainfall to exceed 150 mm in most parts of the country during the forecast period.

GEFS Week-2 Exceedance Prob. > 200mm  
Valid: 20191210 - 20191216



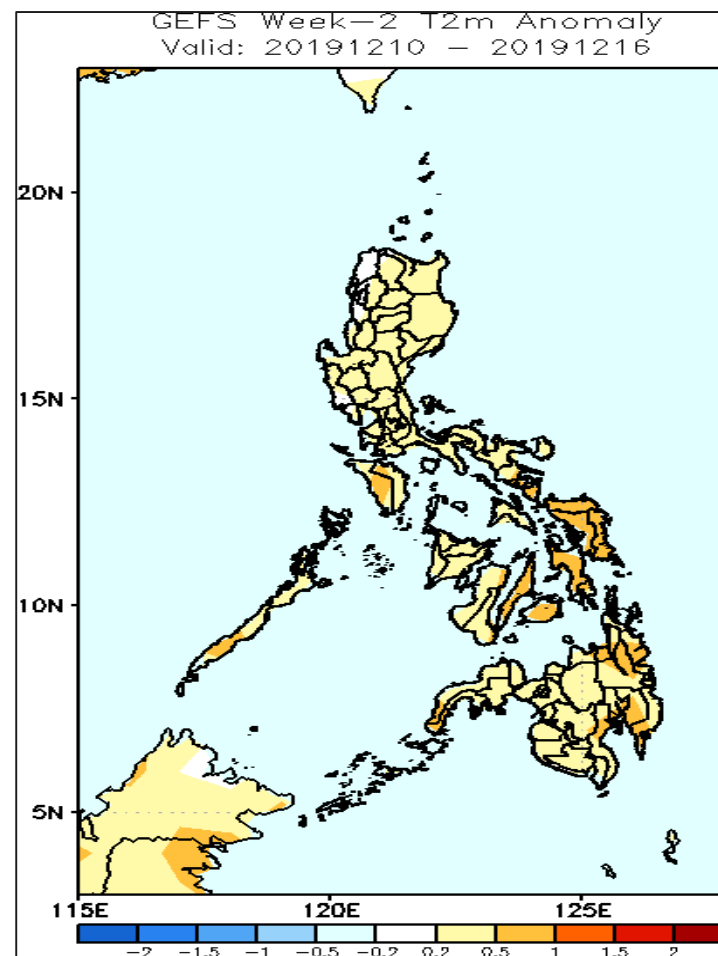
Less probability of rainfall to exceed 200 mm in most parts of the country during the forecast period.

# GEFS Week-1 & 2 Forecasts: T2m Anomaly



**2m Temperature Week1 (Dec 3-9, 2019)**

Near to slightly cooler than average surface air temperature will likely experience in most parts of Luzon while slightly warmer to warmer than normal for the rest of the country.



**2m Temperature Week 2: Dec 10 - 16, 2019**

Slightly warmer to warmer than average surface air temperature are expected in most parts of the country during the forecast period.