



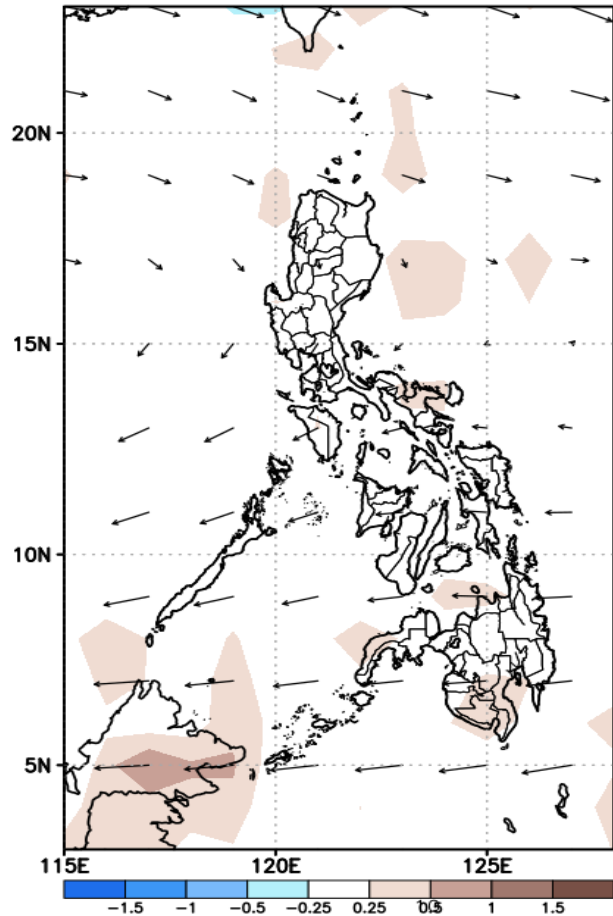
# Week 1 & Week 2 Forecast for the Philippines using GEFS Model



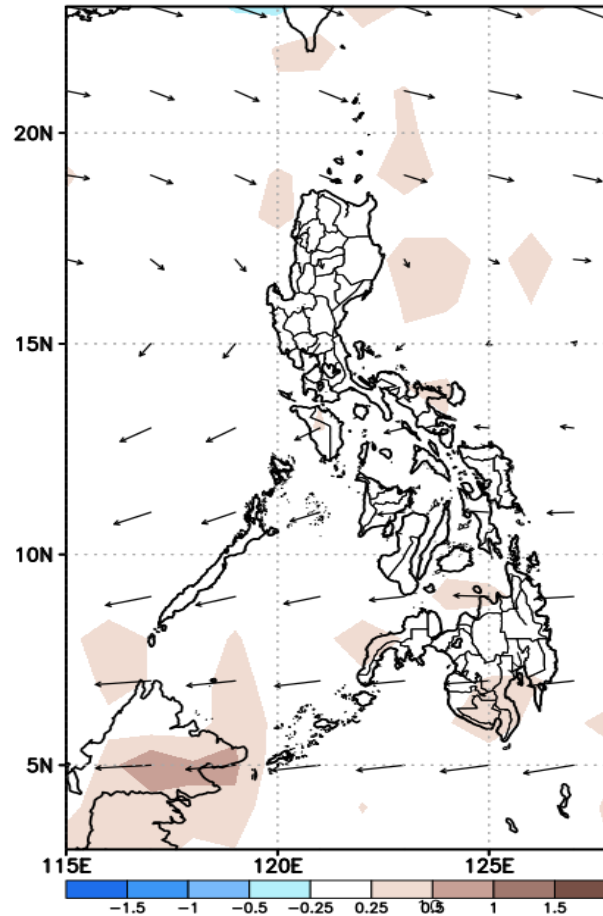
# GEFS Week-1 Forecasts: Divergence & Wind Anomaly

Week 1: Sep 03-09, 2020

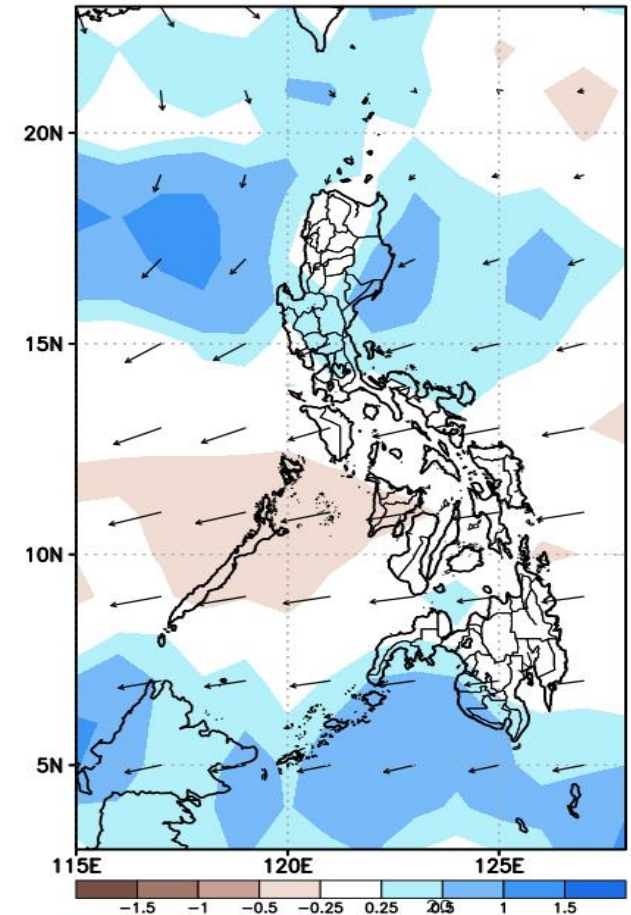
GEFS Week-1 850-hPa Divergence and Wind Anom  
Valid: 20200903 - 20200909



GEFS Week-1 700-hPa Divergence and Wind Anom  
Valid: 20200903 - 20200909



GEFS Week-1 200-hPa Divergence and Wind Anom  
Valid: 20200903 - 20200909

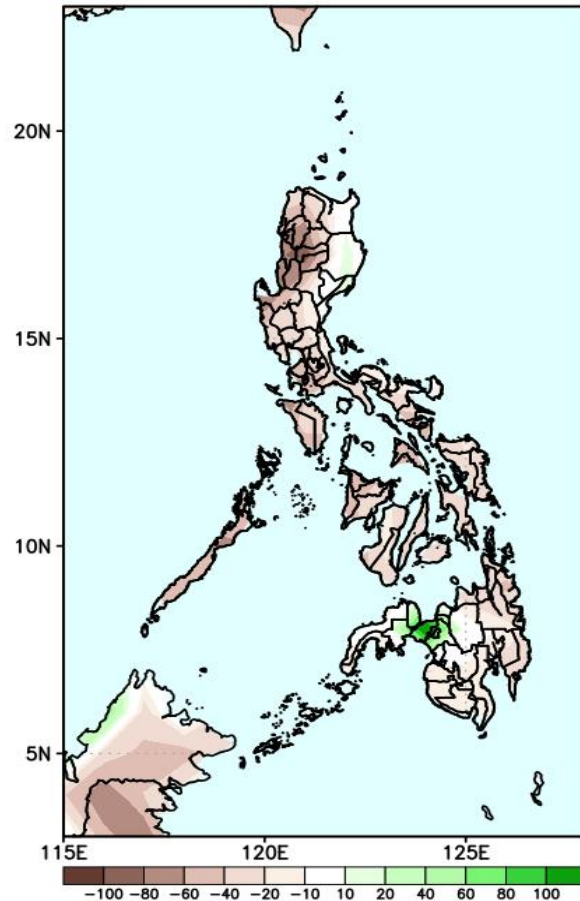


Upper level (200hPa) Divergence suggest likelihood of precipitation in eastern and central Luzon and western Mindanao. Southwest Monsoon affecting northern and extreme northern Luzon. Easterlies affecting most parts of the country during the forecast period.

# Precipitation Anomaly and Exceedance Probability > 25/50 mm

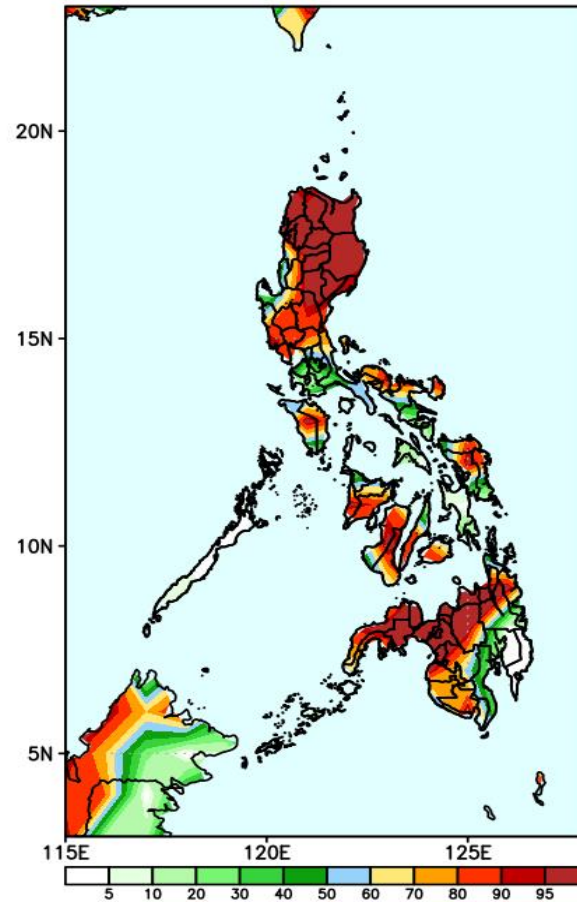
Week 1: Sep 03-09, 2020

GEFS Week-1 Precip Anomaly  
Valid: 20200903 - 20200909



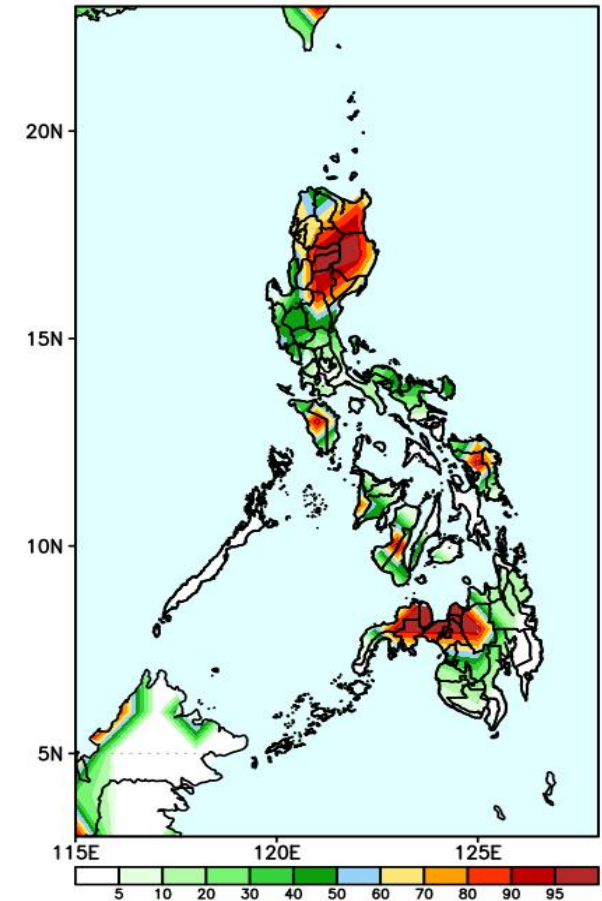
Rainfall deficit of 50-100 mm in western Luzon, most parts of Visayas and eastern Mindanao is expected while increase of rainfall of up to 100mm in Lanao provinces is more likely during the forecast period.

GEFS Week-1 Exceedance Prob. > 25mm  
Valid: 20200903 - 20200909



High probability of rainfall to exceed 25mm in most parts Luzon, eastern & western Visayas and northern & western parts of Mindanao is expected while less likely for the rest of the country during the forecast period.

GEFS Week-1 Exceedance Prob. > 50mm  
Valid: 20200903 - 20200909

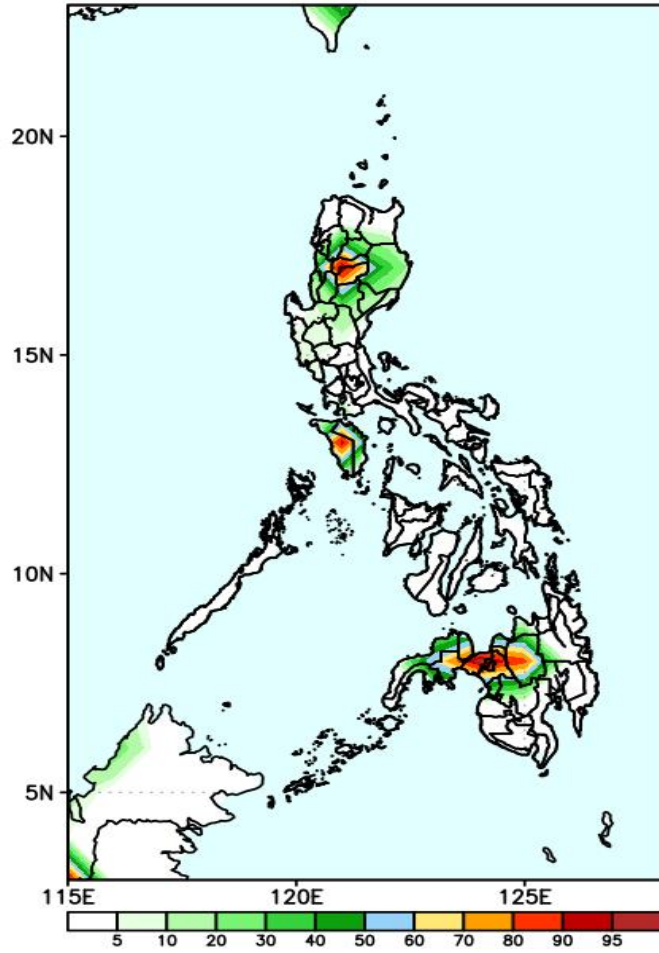


High probability of rainfall to exceed 50mm in most parts of eastern Luzon, Mindoro, Samar provinces and northwestern parts of Mindanao is expected while less likely for the rest of the country during the forecast period.

# Exceedance Probability > 100/150/200 mm

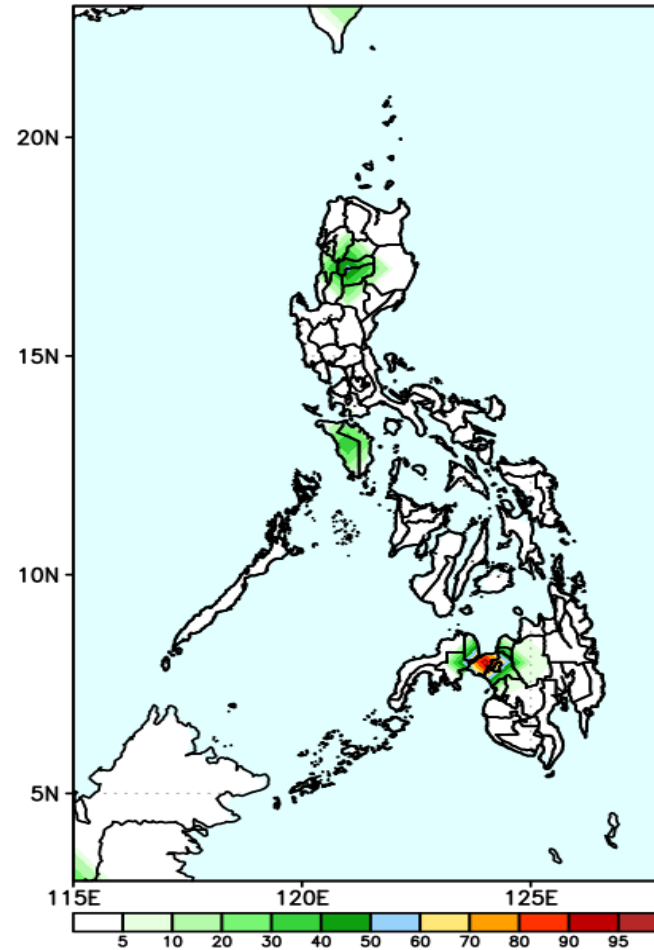
Week 1: Sep 03-09, 2020

GEFS Week-1 Exceedance Prob. > 100mm  
Valid: 20200903 - 20200909



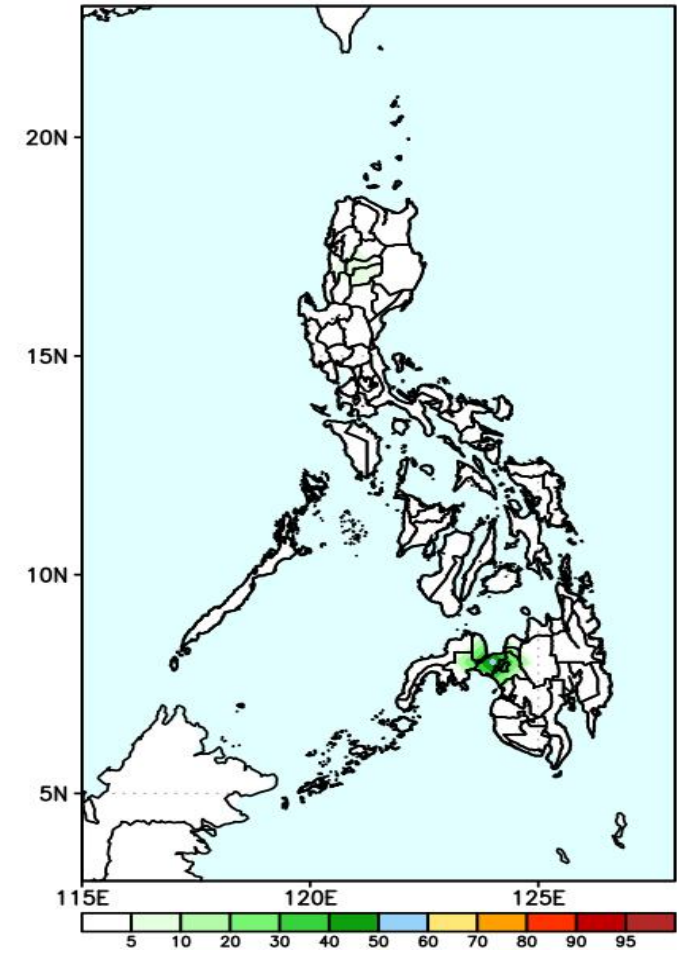
80-90% probability of rainfall to exceed 100mm in Mt. Province, Ifugao, Mindoro, Bukidnon and Lanao Provinces is expected while less likely for the rest of the country during the forecast period.

GEFS Week-1 Exceedance Prob. > 150mm  
Valid: 20200903 - 20200909

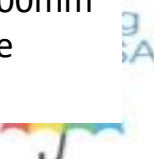


Less probability of rainfall to exceed 150mm in most parts of the country is expected except in Lanao del Norte where there is 70-90% probability during the forecast period.

GEFS Week-1 Exceedance Prob. > 200mm  
Valid: 20200903 - 20200909



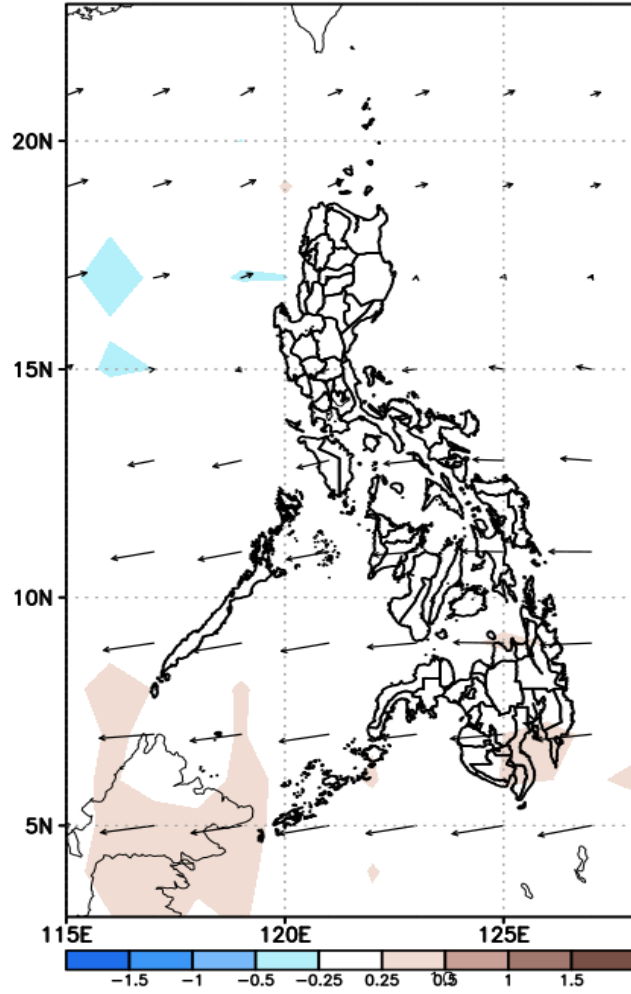
Less probability of rainfall to exceed 200mm in most parts of the country during the forecast period.



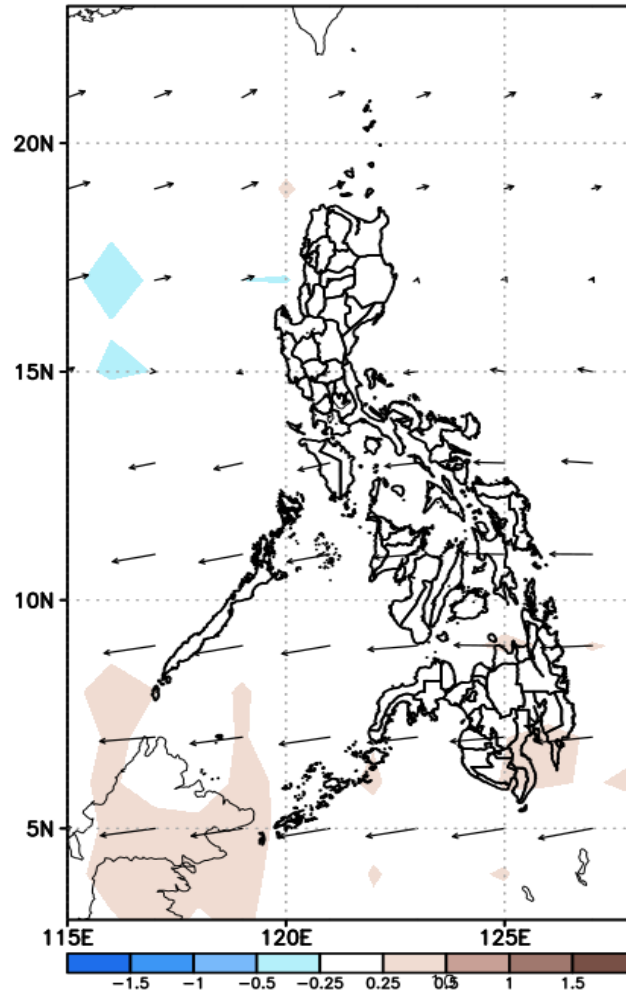
# GEFS Week-2 Forecasts: Divergence & Wind Anomaly

## Week 2: Sep 10-16, 2020

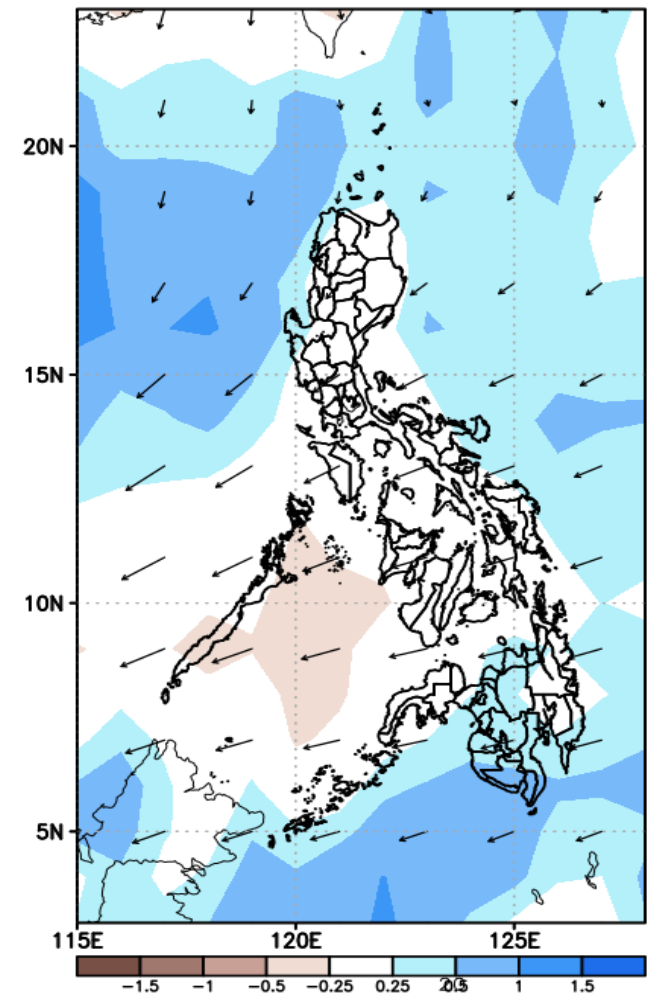
GEFS Week-2 850-hPa Divergence and Wind Anom  
Valid: 20200910 - 20200916



GEFS Week-2 700-hPa Divergence and Wind Anom  
Valid: 20200910 - 20200916



GEFS week-2 200-hPa Divergence and Wind Anom  
Valid: 20200910 - 20200916

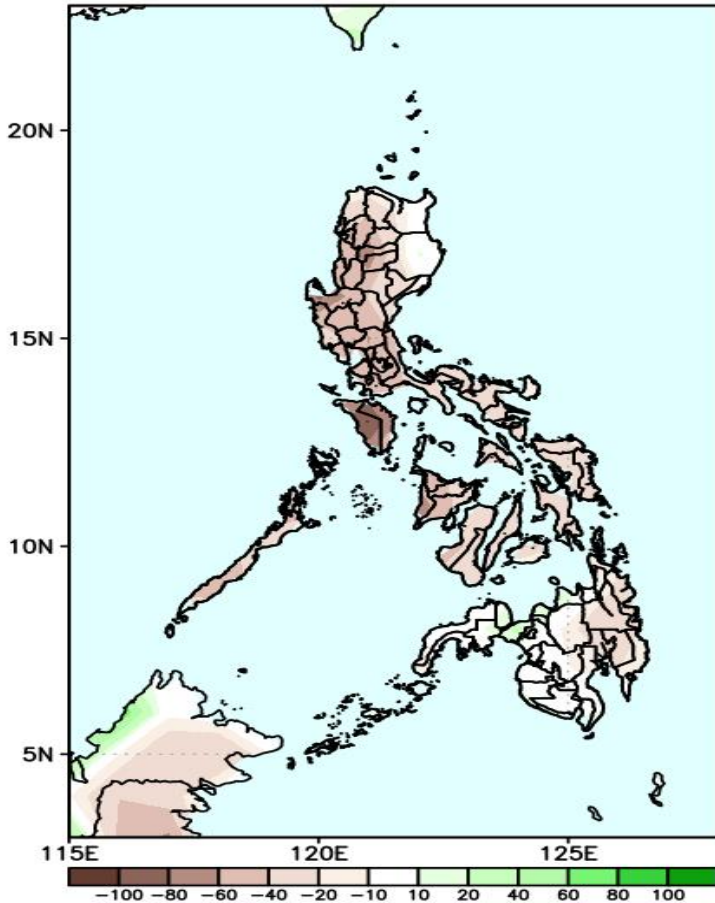


Upper level (200hPa) Divergence suggest likelihood of precipitation in western Luzon and most parts of Mindanao. Southwest Monsoon affecting central and northern Luzon. Easterlies affecting most parts of the country during the forecast period.

# Precipitation Anomaly and Exceedance Probability > 25/50 mm

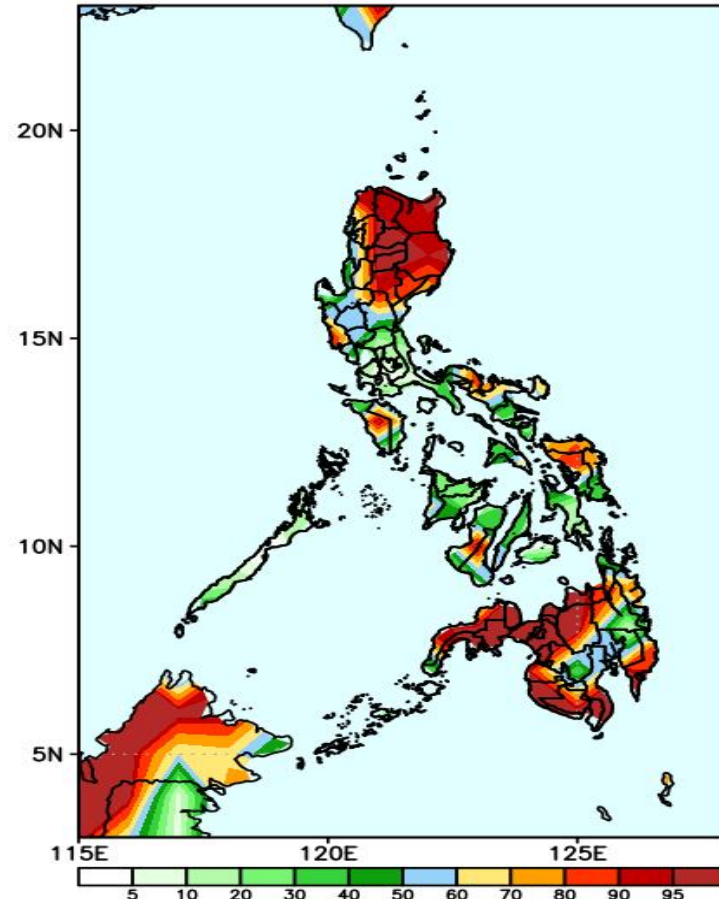
## Week 2: Sep 10-16, 2020

GEFS Week-2 Precip Anomaly  
Valid: 20200910 - 20200916



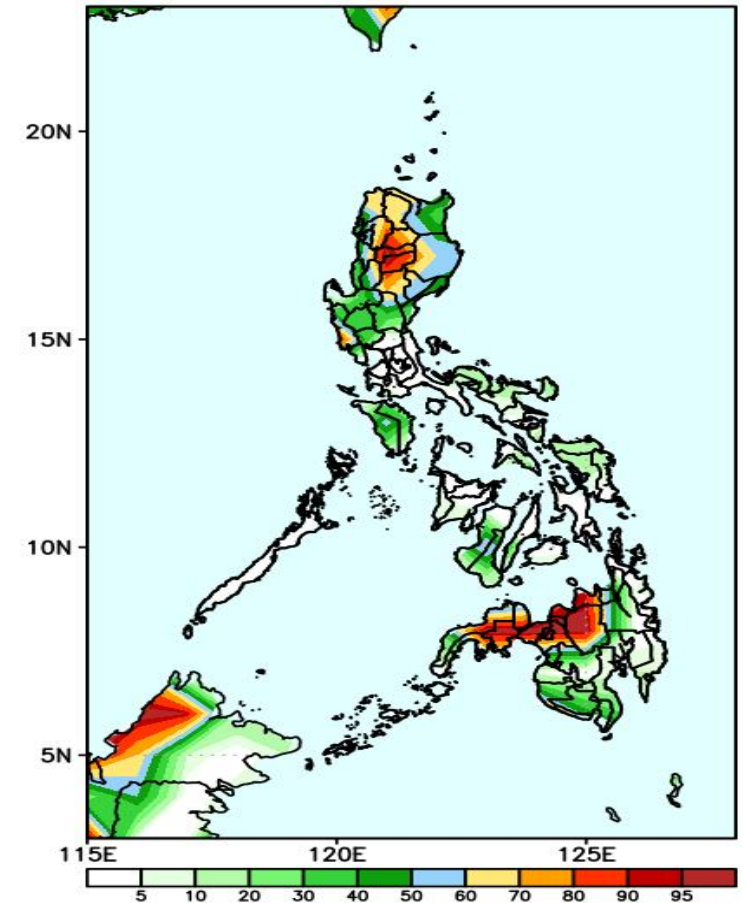
Rainfall deficit of 40-100mm in most parts of the country is expected during the forecast period.

GEFS Week-2 Exceedance Prob. > 25mm  
Valid: 20200910 - 20200916



High probability of rainfall to exceed 25mm in most parts of Luzon, Mindoro, eastern Visayas and most parts of Mindanao is expected while less likely for the rest of the country during the forecast period.

GEFS Week-2 Exceedance Prob. > 50mm  
Valid: 20200910 - 20200916



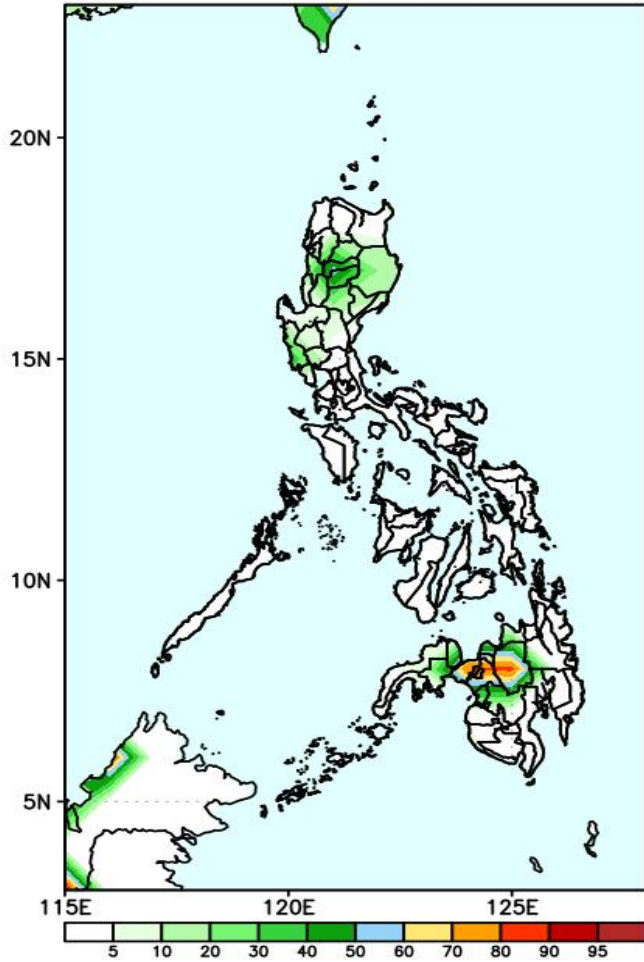
High probability of rainfall to exceed 50mm in most parts of Cordillera region and northwestern parts of Mindanao while less likely for the rest of the country during the forecast period.



# Exceedance Probability > 100/150/200 mm

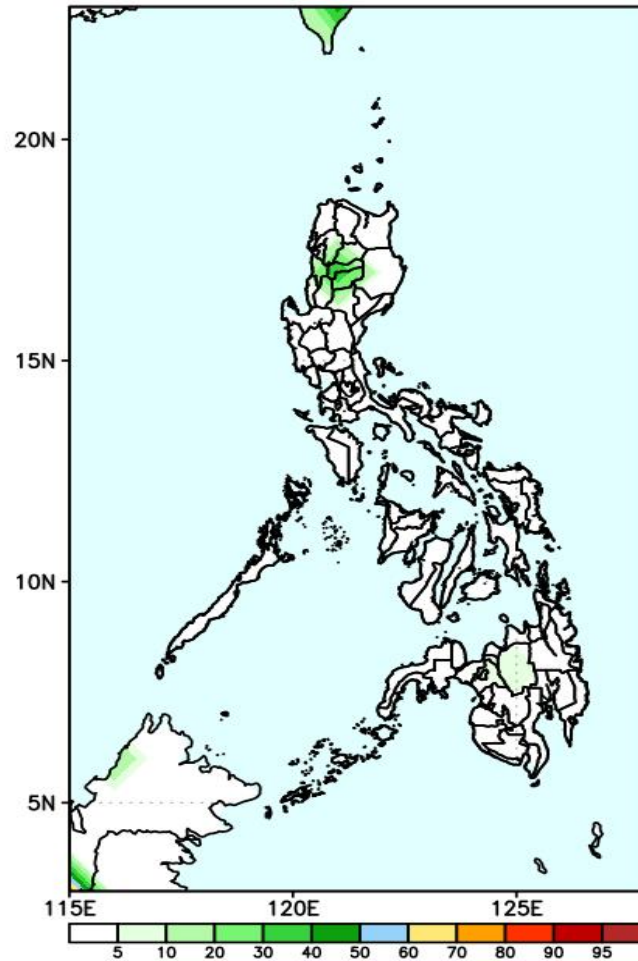
## Week 2: Sep 10-16, 2020

GEFS Week-2 Exceedance Prob. > 100mm  
Valid: 20200910 - 20200916



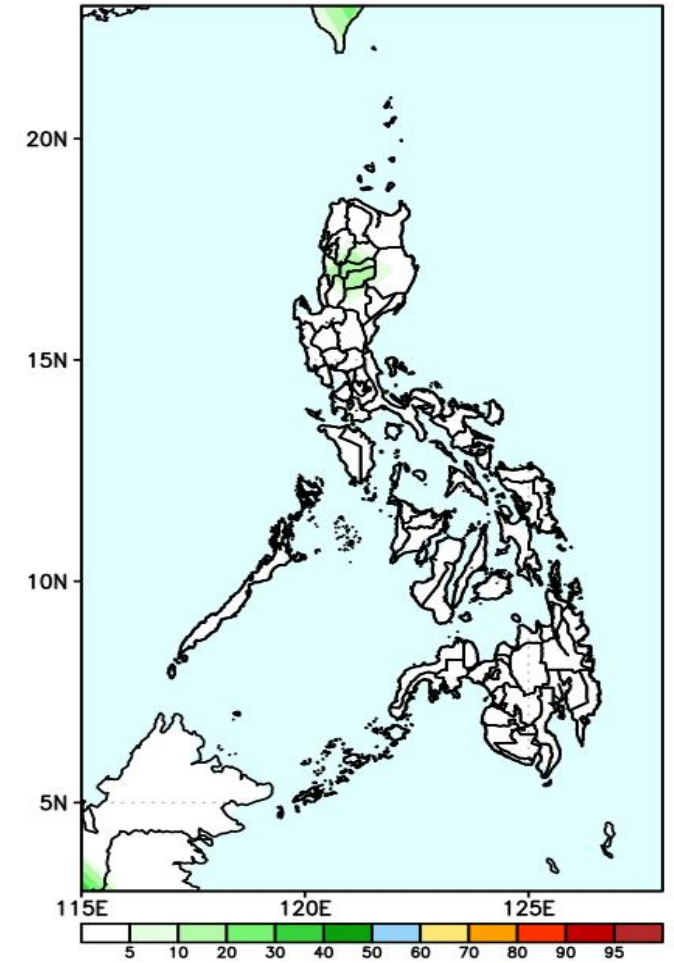
60-90% probability of rainfall to exceed 100mm in Bukidnon and Lanao provinces while less likely for the rest of the country during the forecast period.

GEFS Week-2 Exceedance Prob. > 150mm  
Valid: 20200910 - 20200916



Less probability of rainfall to exceed 150mm in most parts of the country during the forecast period.

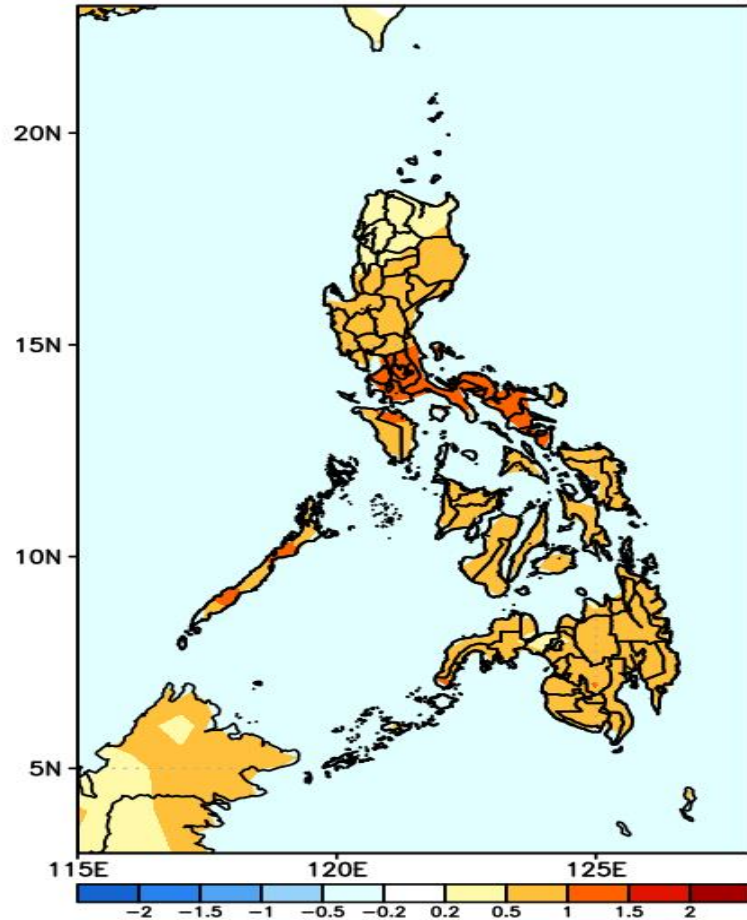
GEFS Week-2 Exceedance Prob. > 200mm  
Valid: 20200910 - 20200916



Less probability of rainfall to exceed 200mm in most parts of the country during the forecast period.

# GEFS Week-1 & 2 Forecasts: T2m Anomaly

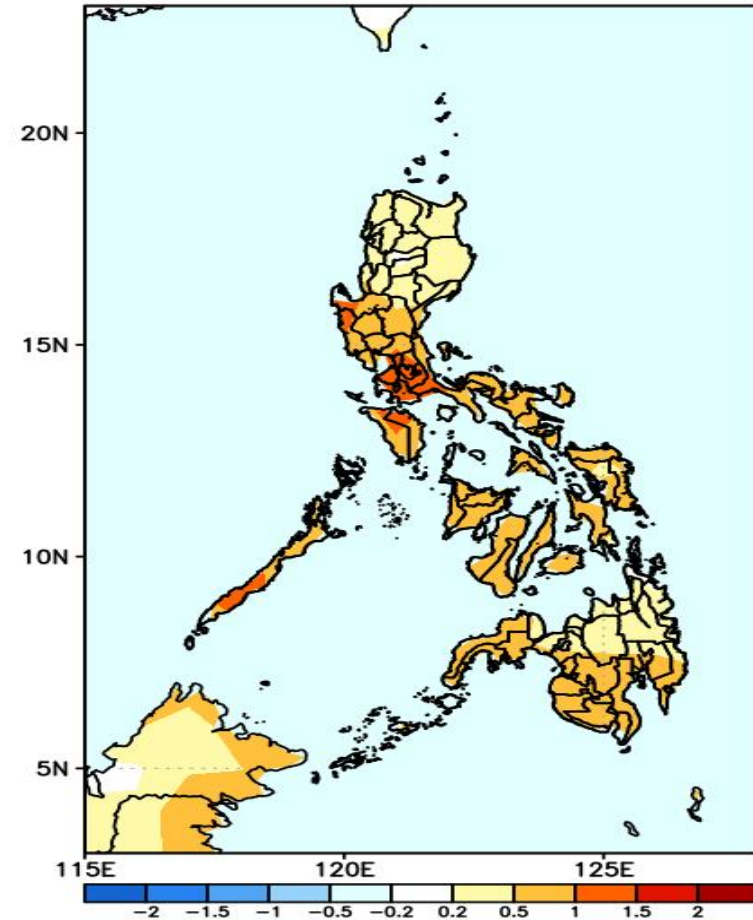
GEFS Week-1 T2m Anomaly  
Valid: 20200903 - 20200909



**2m Temperature Week 1: Sep 03-09, 2020**

Slightly warmer than average surface air temperature will likely experience in most parts of the country except in southern Luzon and Bicol Region where warmer temperature is expected during the forecast period.

GEFS Week-2 T2m Anomaly  
Valid: 20200910 - 20200916



**2m Temperature Week 2: Sep 10-16, 2020**

Average to slightly warmer than average surface air temperature will likely experience in most parts of the country except in southern Luzon and Palawan where warmer temperature is expected during the forecast period.