



Week 1 & Week 2 Forecast for the Philippines using GEFS Model



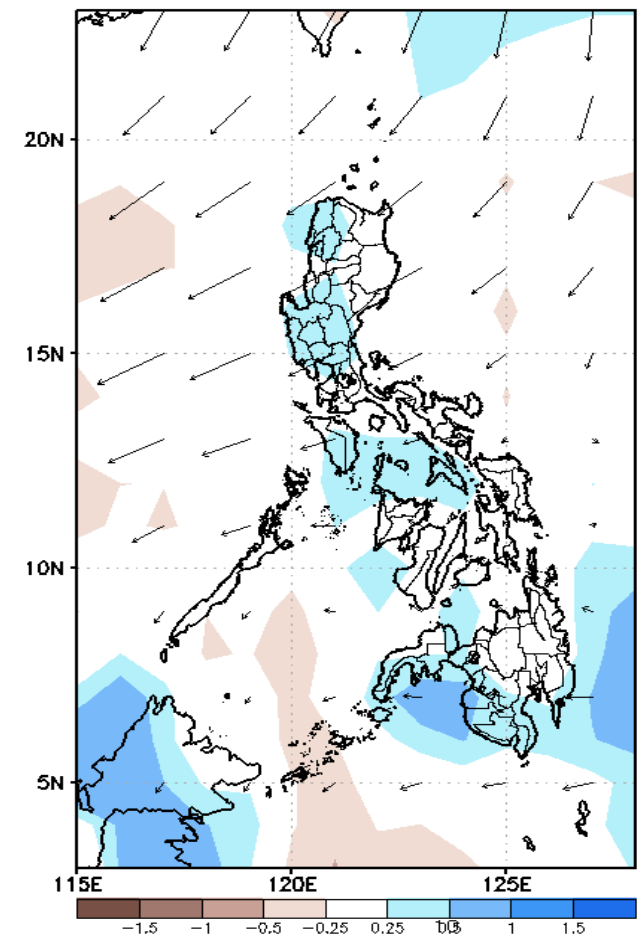
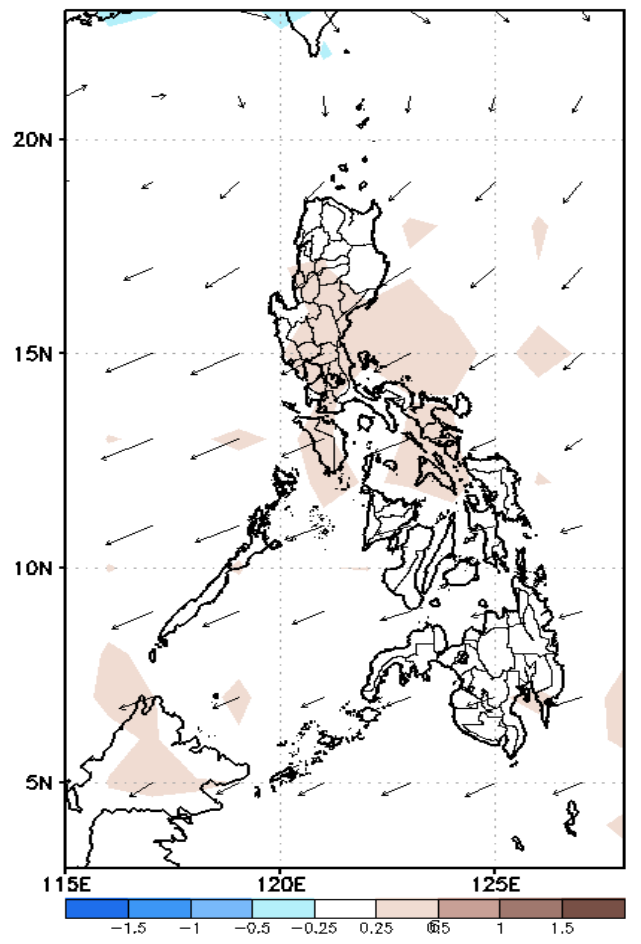
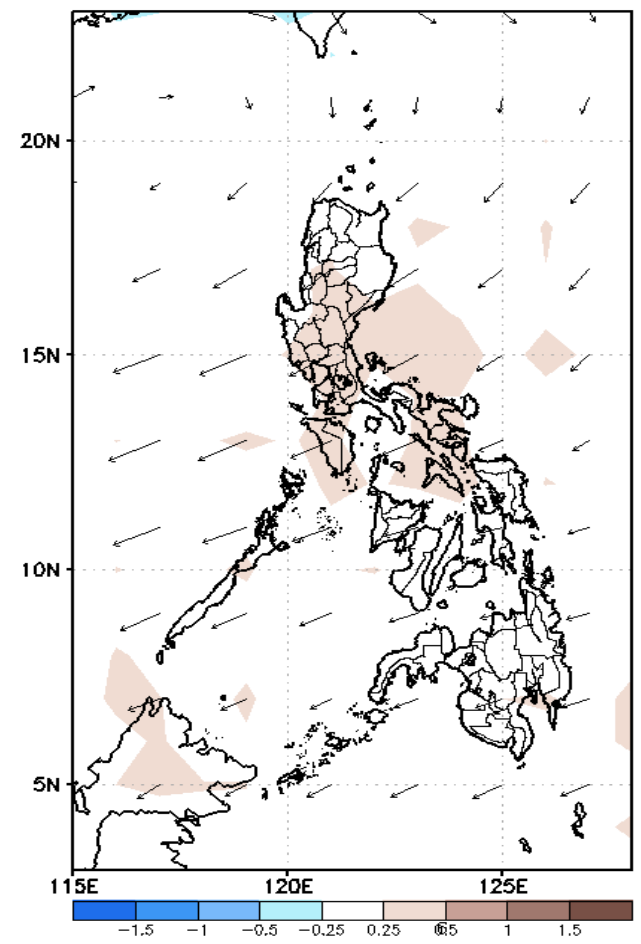
GEFS Week-1 Forecasts: Divergence & Wind Anomaly

Week 1: June 04-10, 2020

GEFS Week-1 850-hPa Divergence and Wind Anom.
Valid: 20200604 - 20200610

GEFS Week-1 700-hPa Divergence and Wind Anom.
Valid: 20200604 - 20200610

GEFS Week-1 200-hPa Divergence and Wind Anom.
Valid: 20200604 - 20200610



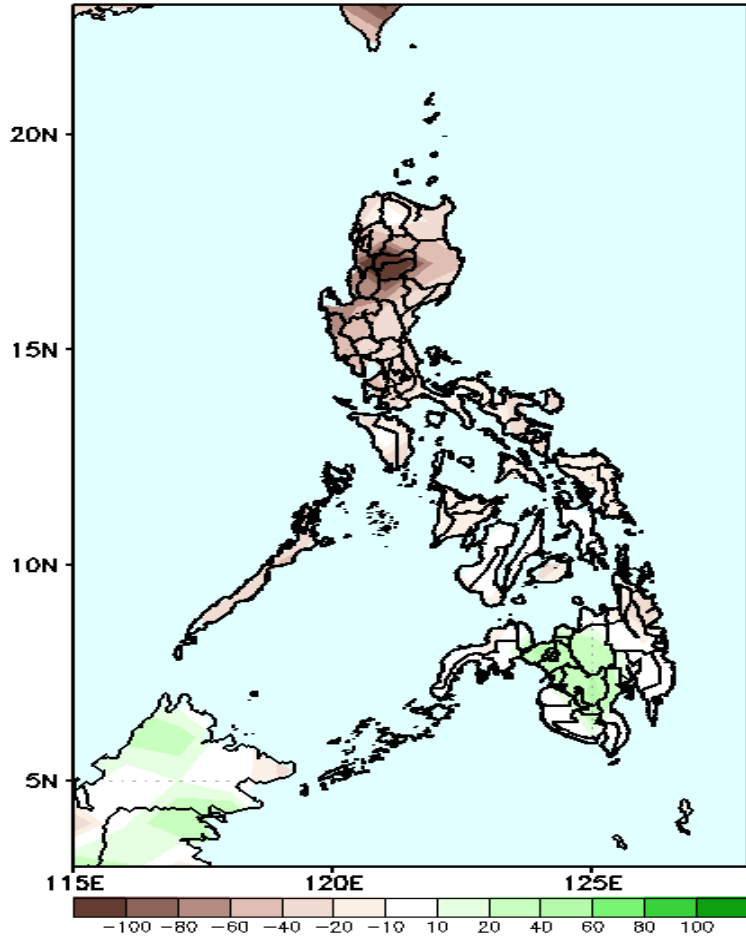
Upper level (200 hPa) Divergence suggest likelihood of precipitation in eastern parts of the country . Easterlies affecting most parts of the country during the forecast period.



Precipitation Anomaly and Exceedance Probability > 25/50 mm

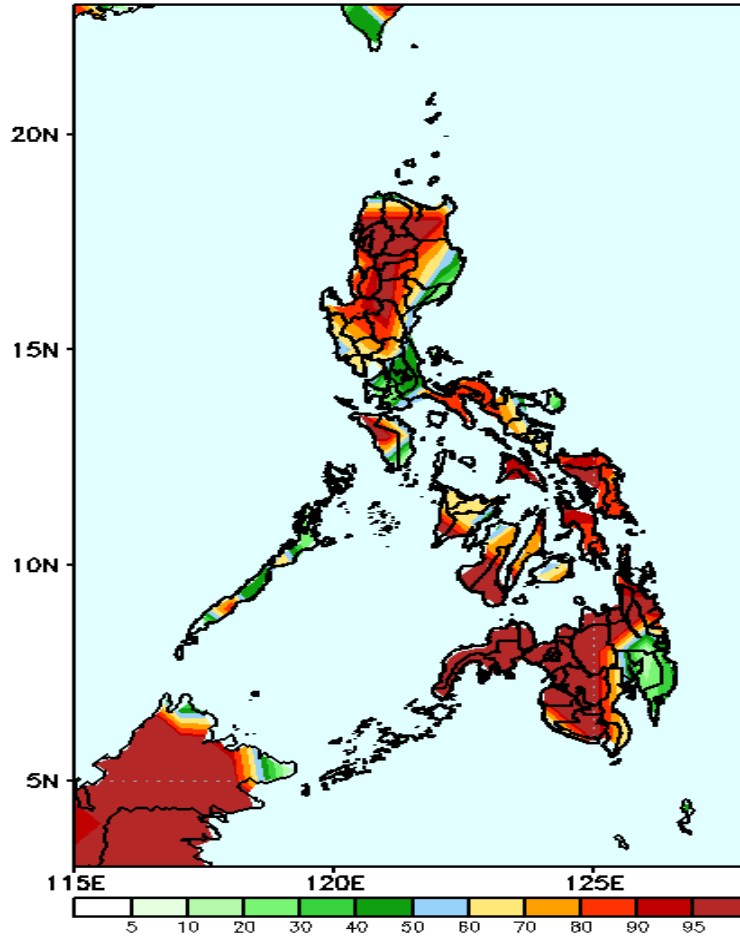
Week 1: June 04-10, 2020

GEFS Week-1 Precip Anomaly
Valid: 20200604 - 20200610

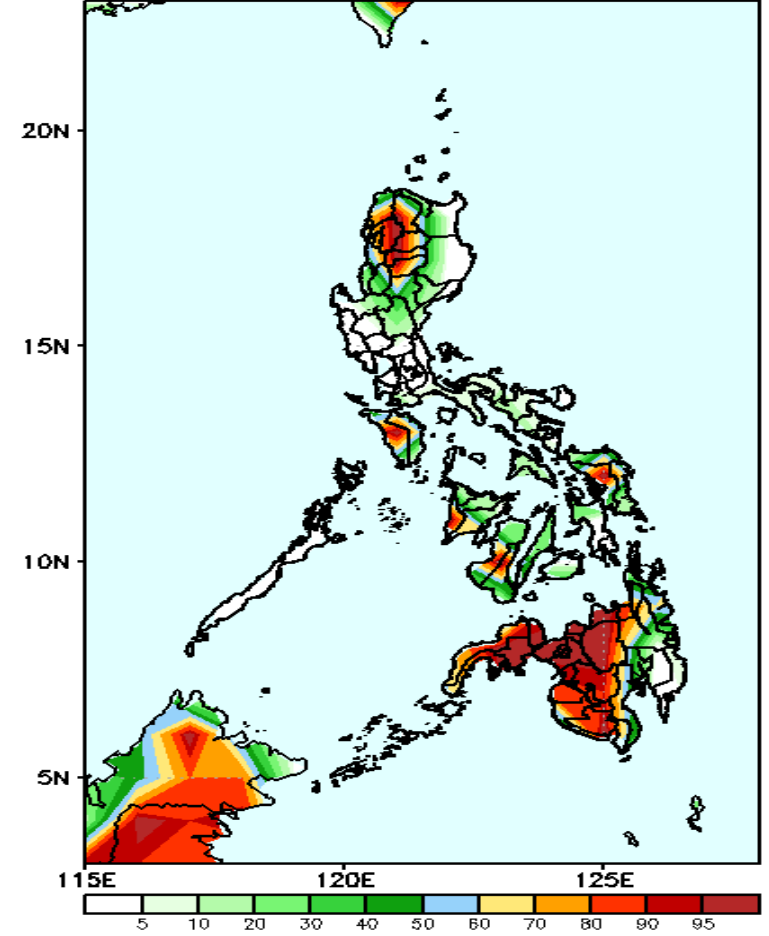


Rainfall deficit of up to 120mm in Luzon is expected while increase of rainfall of up to 40mm in Mindanao is more likely during the forecast period.

GEFS Week-1 Exceedance Prob. > 25mm GEFS Week-1 Exceedance Prob. > 50mm
Valid: 20200604 - 20200610



High probability of rainfall to exceed 25mm in most parts of the country except in eastern parts of Cagayan Valley, southern Luzon and in Davao Region.

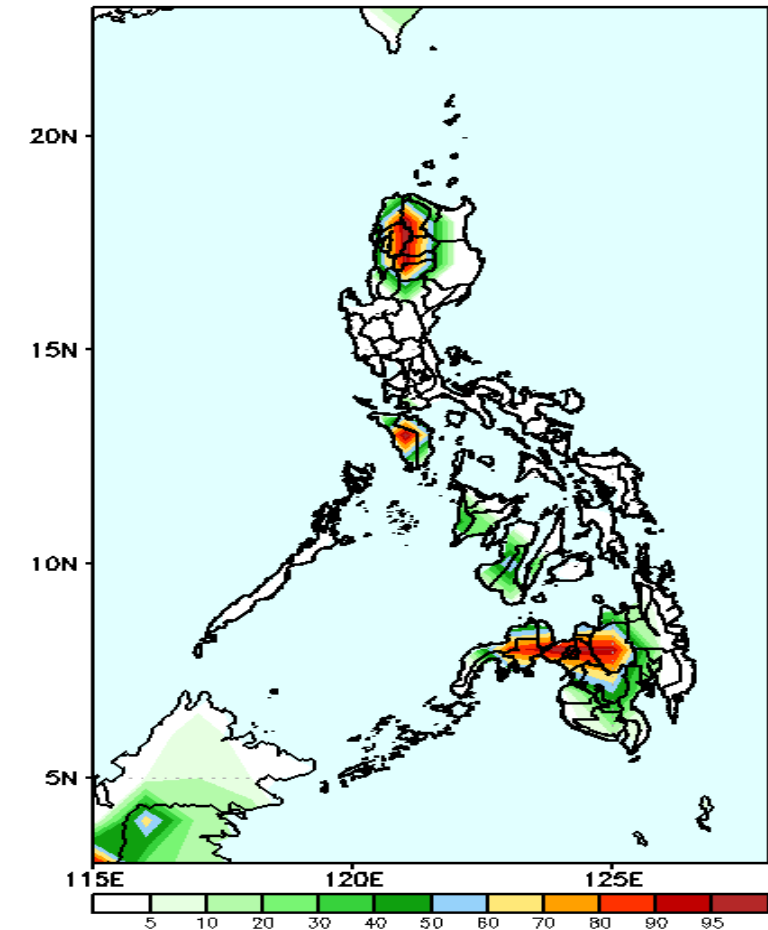


High probability of rainfall to exceed 50mm in Cordillera Region, Mindoro, western parts of Region 6 & 7 and northern and western Mindanao (including Zamboanga Peninsula) while less likely for the rest of the country during the forecast period.

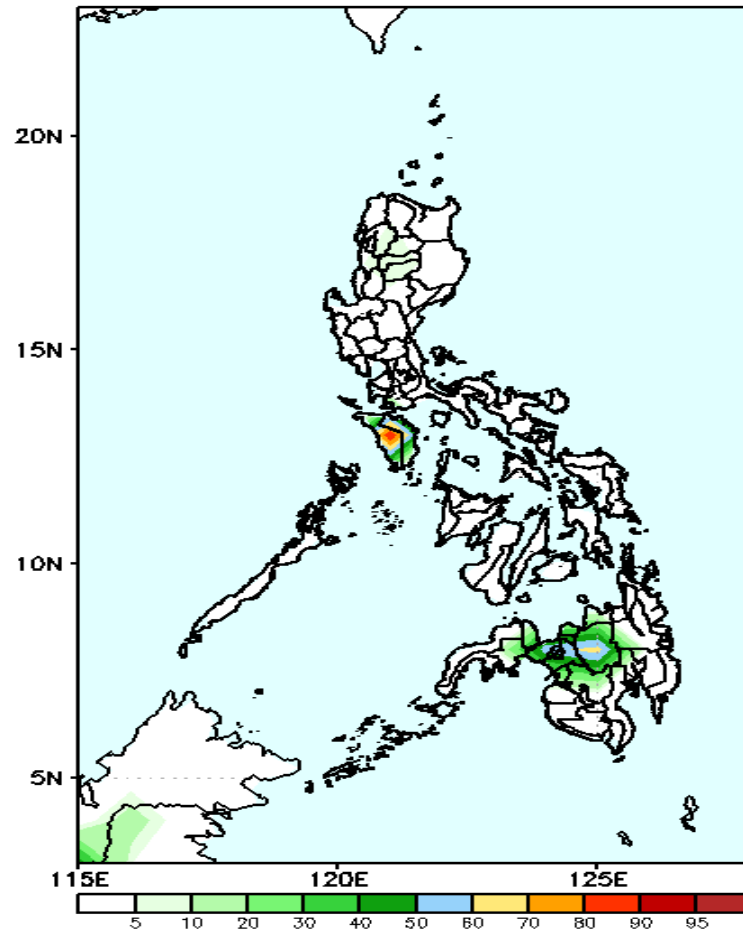
Exceedance Probability > 100/150/200 mm

Week 1: June 04-10, 2020

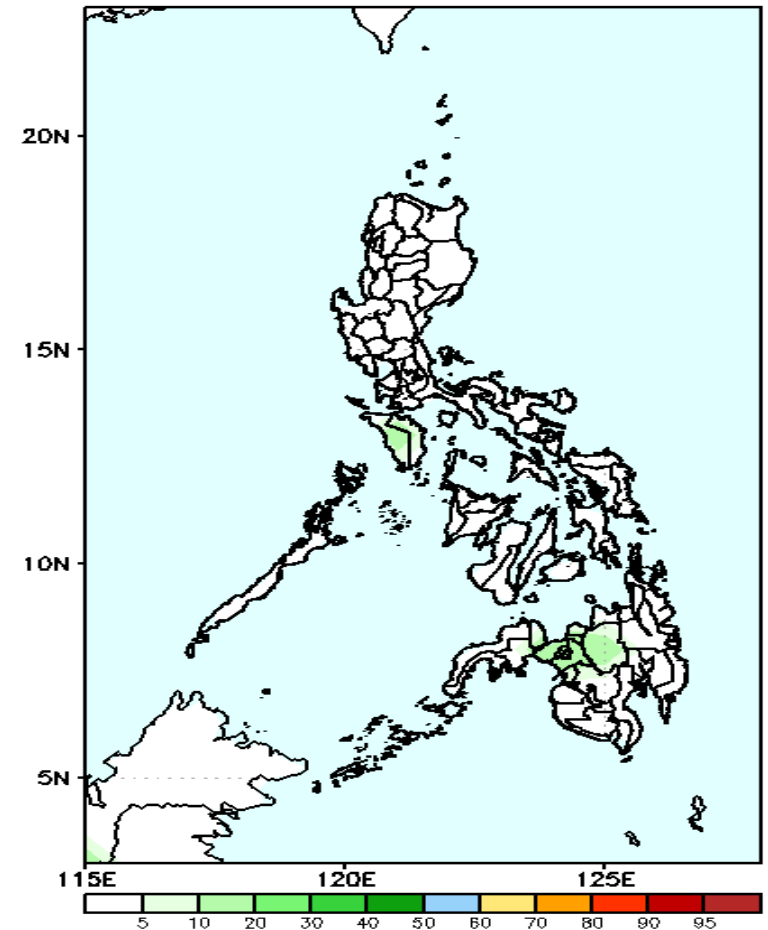
GEFS Week-1 Exceedance Prob. > 100mm Valid: 20200604 - 20200610 GEFS Week-1 Exceedance Prob. > 150mm Valid: 20200604 - 20200610 GEFS Week-1 Exceedance Prob. > 200mm Valid: 20200604 - 20200610



50-90% probability of rainfall to exceed 100mm in Cordillera Region, Mindoro, northern Mindanao and Zamboanga del Sur & Norte while less likely for the rest of the country during the forecast period.



50-90% probability of rainfall to exceed 150mm in Mindoro and northern Mindanao while less likely for the rest of the country during the forecast period.



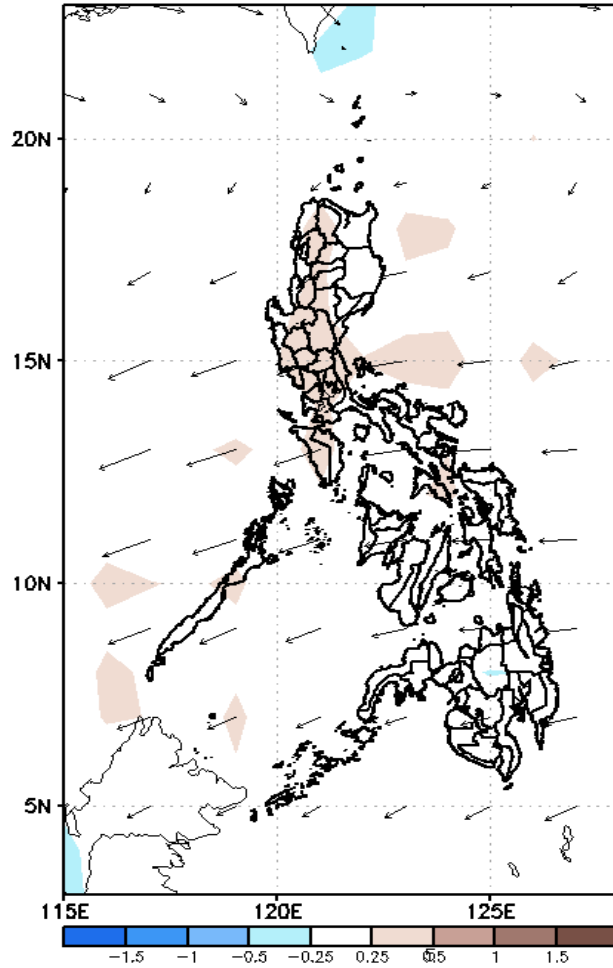
Less probability of rainfall to exceed 200mm in most parts of the country during the forecast period.



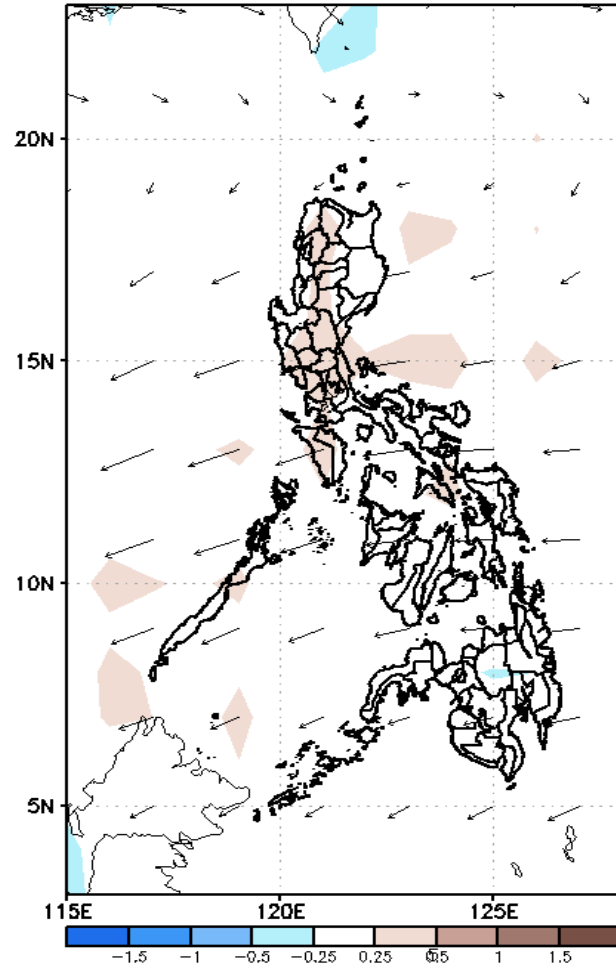
GEFS Week-2 Forecasts: Divergence & Wind Anomaly

Week 2: June 11-17, 2020

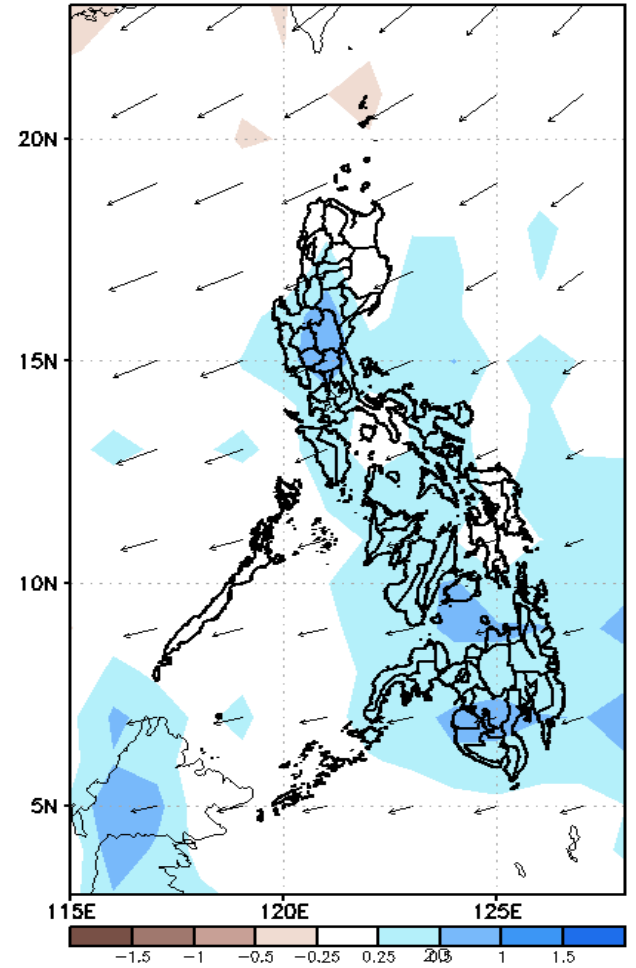
GEFS Week-2 850-hPa Divergence and Wind Anom
Valid: 20200611 - 20200617



GEFS Week-2 700-hPa Divergence and Wind Anom
Valid: 20200611 - 20200617



GEFS week-2 200-hPa Divergence and Wind Anom
Valid: 20200611 - 20200617



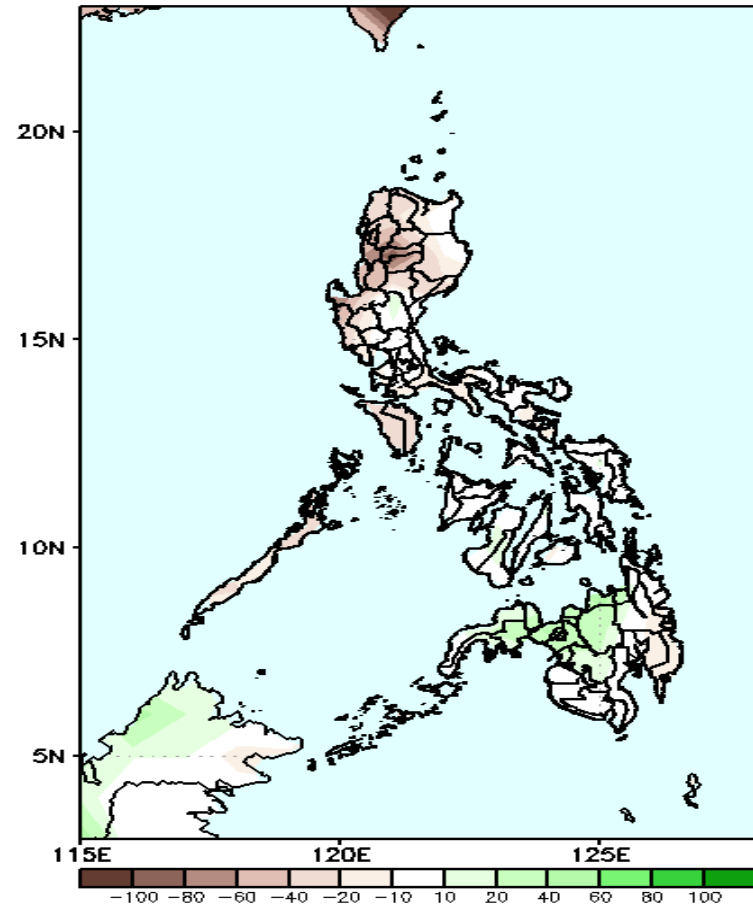
Upper level (200 hPa) Divergence suggest likelihood of precipitation in most parts of the country. Easterlies affecting most parts of the country during the forecast period.



Precipitation Anomaly and Exceedance Probability > 25/50 mm

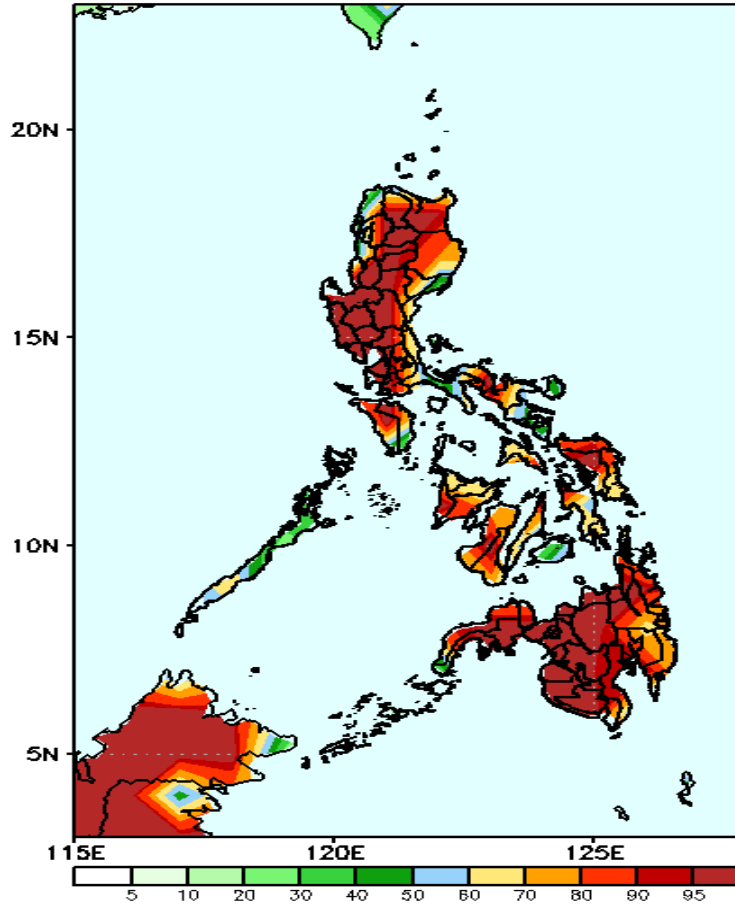
Week 2: June 11-17, 2020

GEFS Week-2 Precip Anomaly
Valid: 20200611 - 20200617



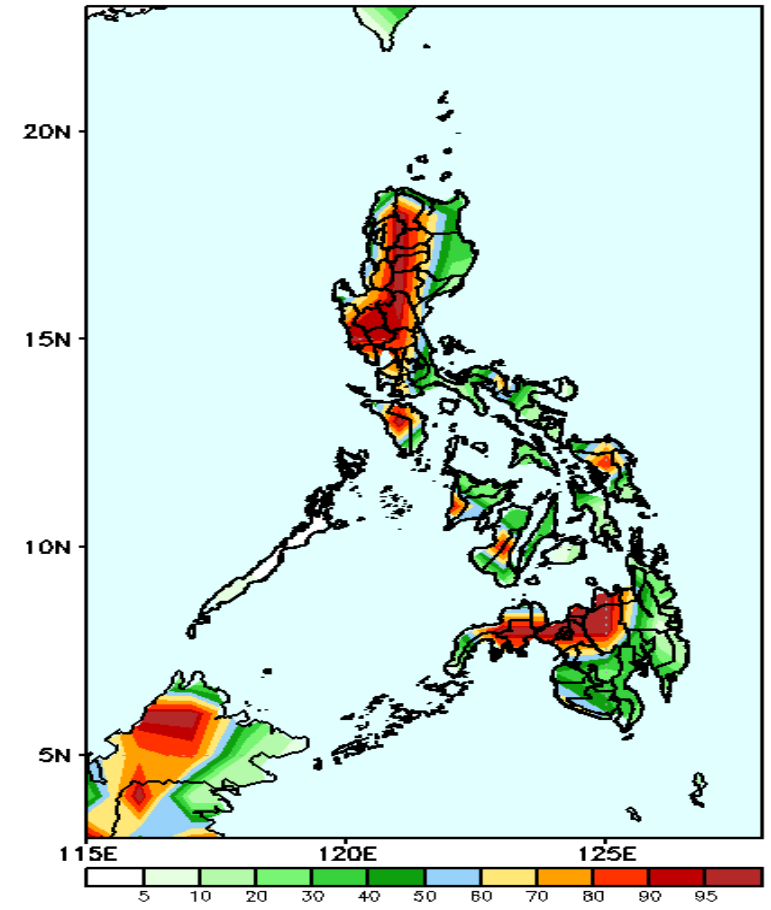
Rainfall deficit of up to 80mm is expected in Luzon while up to 20mm rainfall deficit for the rest of the country during the forecast period.

GEFS Week-2 Exceedance Prob. > 25mm
Valid: 20200611 - 20200617



High probability of rainfall to exceed 25mm in most parts of the country during the forecast period.

GEFS Week-2 Exceedance Prob. > 50mm
Valid: 20200611 - 20200617

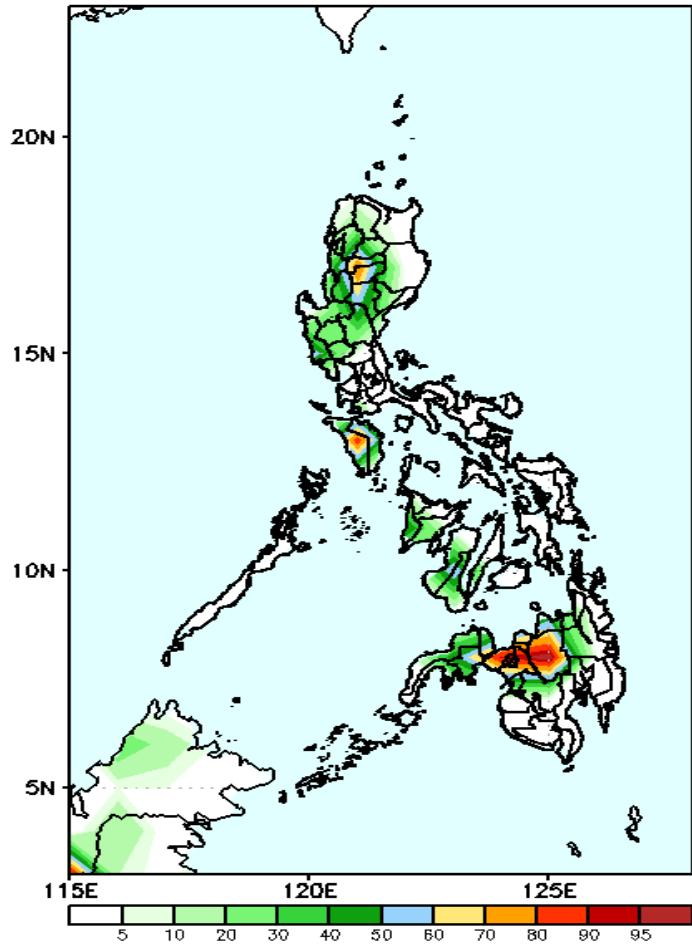


High probability of rainfall to exceed 50mm in most parts of Luzon (except Cagayan Valley), northern Samar, western parts of Region 6 & 7 and northern Mindanao (including Zamboanga Peninsula) while less likely for the rest of the country during the forecast period.

Exceedance Probability > 100/150/200 mm

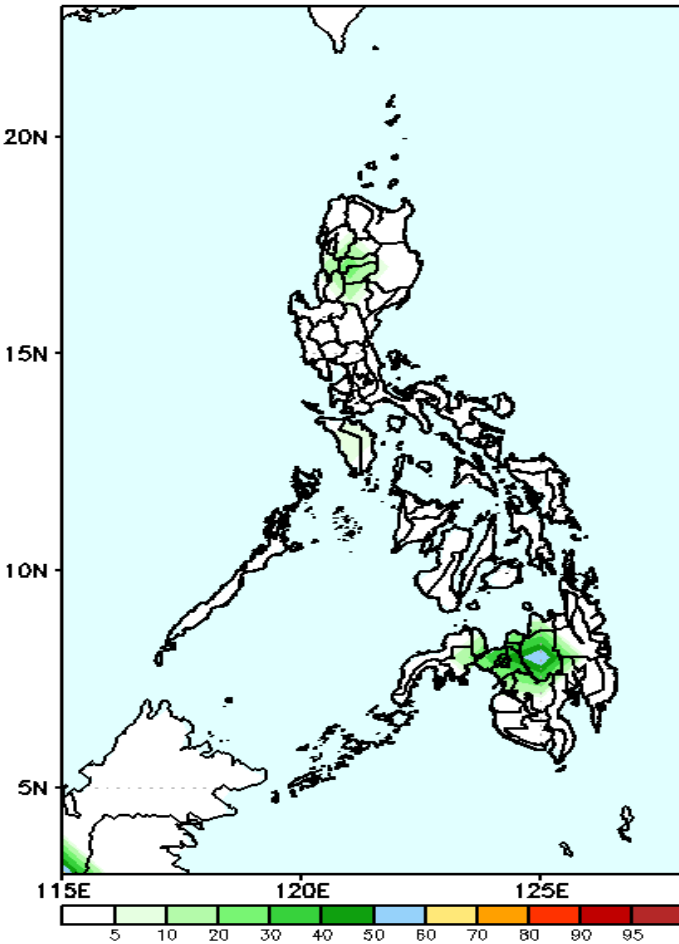
Week 2: June 11-17, 2020

GEFS Week-2 Exceedance Prob. > 100mm
Valid: 20200611 - 20200617



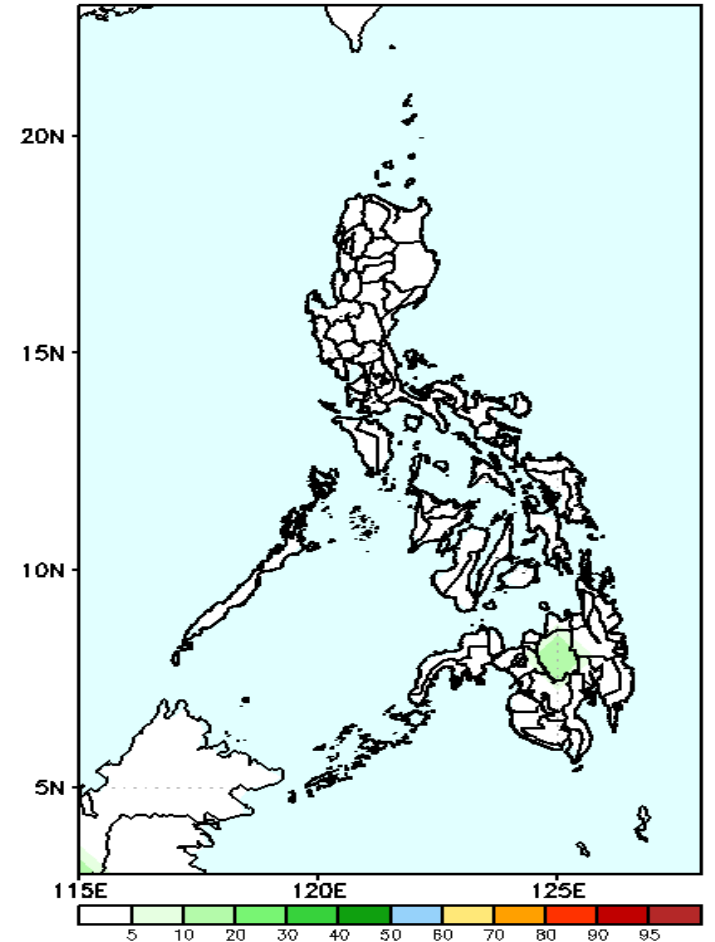
50-95% probability of rainfall to exceed 100mm in Cordillera Region and northern Mindanao while less likely for the rest of the country during the forecast period.

GEFS Week-2 Exceedance Prob. > 150mm
Valid: 20200611 - 20200617



Less probability of rainfall to exceed 150mm in most parts of the country during the forecast period.

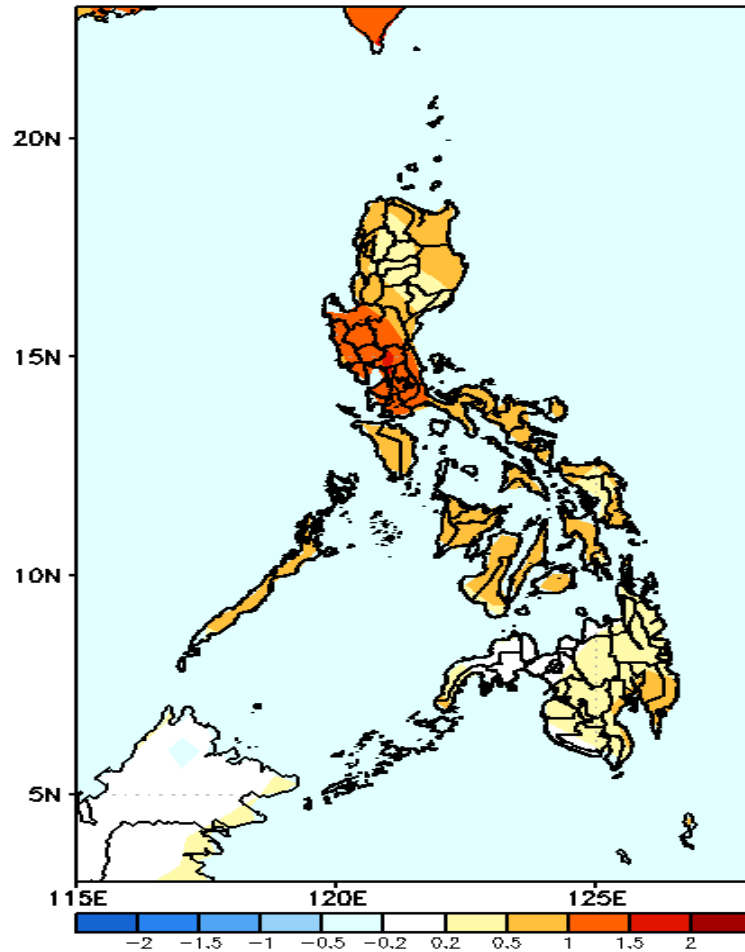
GEFS Week-2 Exceedance Prob. > 200mm
Valid: 20200611 - 20200617



Less probability of rainfall to exceed 200mm in most parts of the country during the forecast period.

GEFS Week-1 & 2 Forecasts: T2m Anomaly

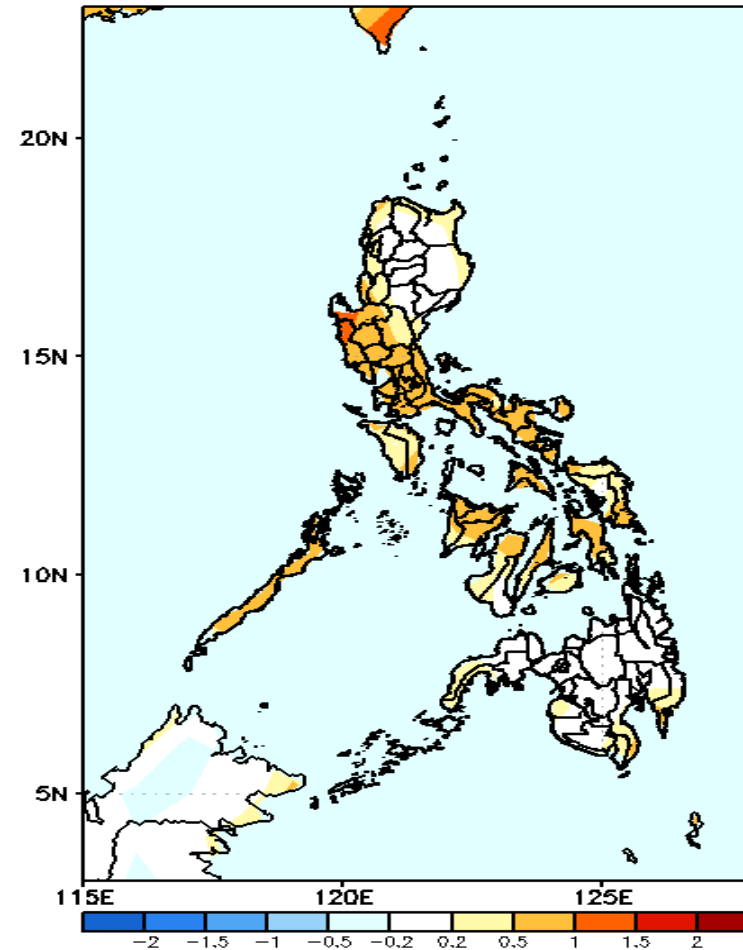
GEFS Week-1 T2m Anomaly
Valid: 20200604 - 20200610



2m Temperature Week 1: June 04-10, 2020

Warmer than average surface air temperature will likely experience in southern half of Luzon while average to slightly warmer surface air temperature is expected in for the rest of the country during the forecast period.

GEFS Week-2 T2m Anomaly
Valid: 20200611 - 20200617



2m Temperature Week 2: June 11-17, 2020

Average to slightly warmer than average surface air temperature will likely experience in most parts of the country during the forecast period.