



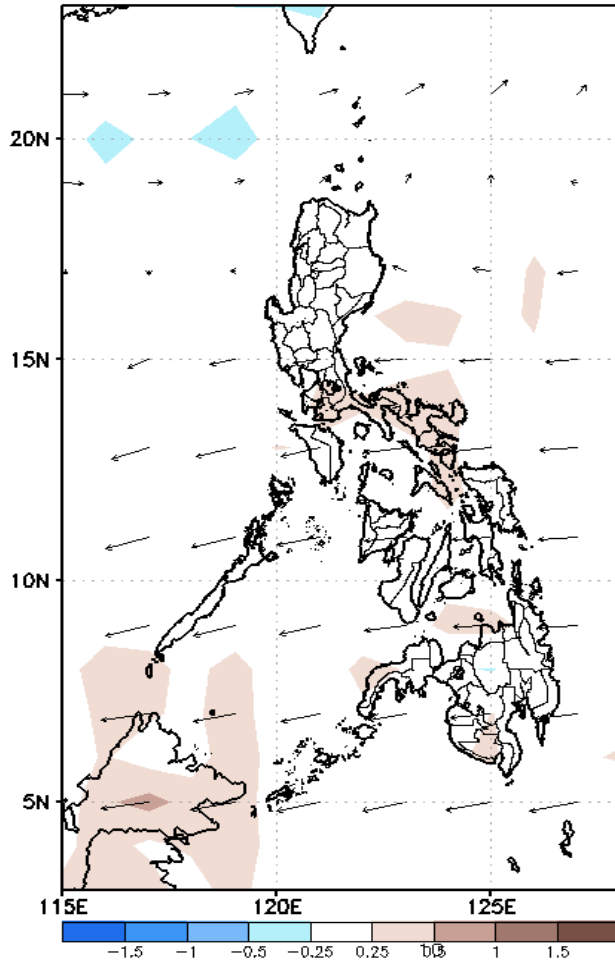
Week 1 & Week 2 Forecast for the Philippines using GEFS Model



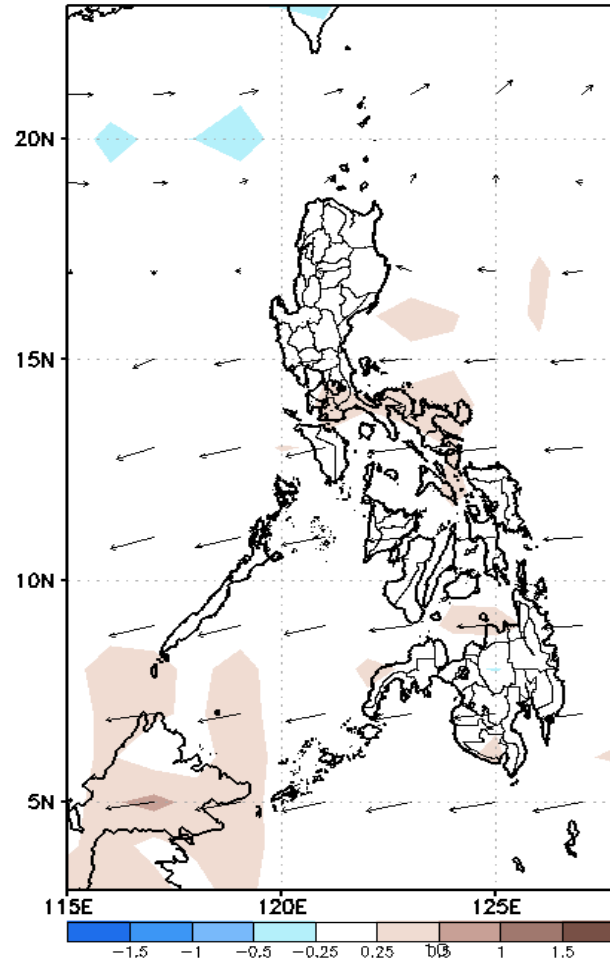
GEFS Week-1 Forecasts: Divergence & Wind Anomaly

Week 1: Sep 07-13, 2020

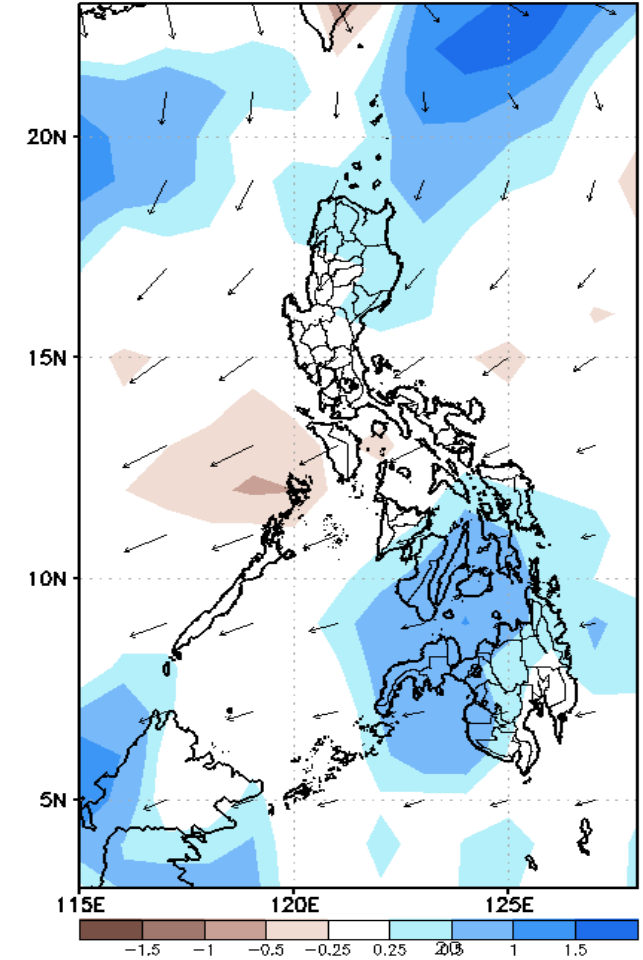
GEFS Week-1 850-hPa Divergence and Wind Anom
Valid: 20200907 - 20200913



GEFS Week-1 700-hPa Divergence and Wind Anom
Valid: 20200907 - 20200913



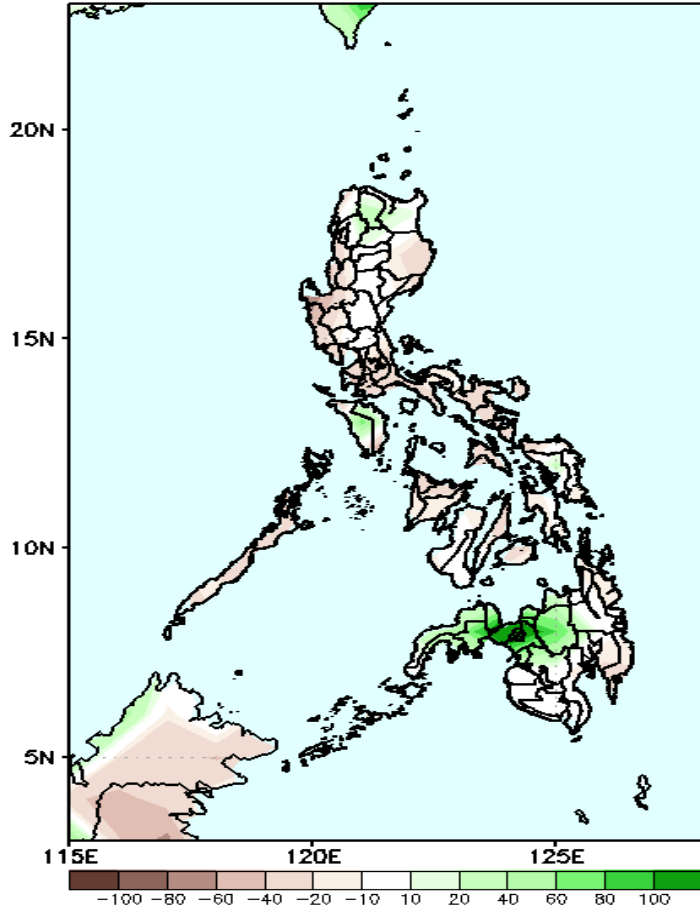
GEFS Week-1 200-hPa Divergence and Wind Anom
Valid: 20200907 - 20200913



Upper level (200hPa) Divergence suggest likelihood of precipitation in northern Luzon, central Visayas and northern and western Mindanao. Southwest Monsoon affecting extreme northern Luzon. Easterlies affecting most parts of the country during the forecast period.

Week 1: Sep 07-13, 2020

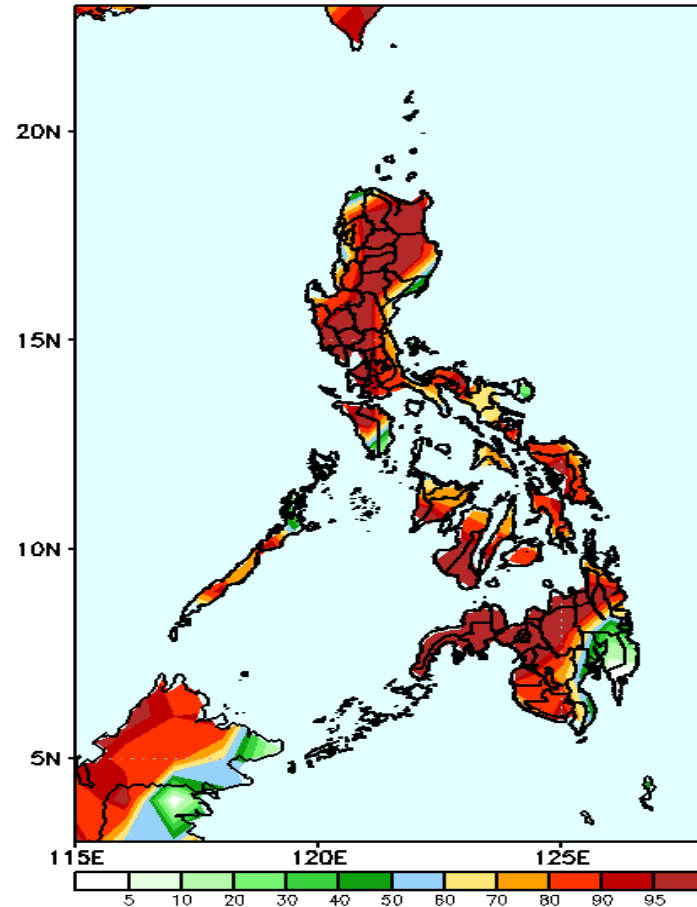
GEFS Week-1 Precip Anomaly
Valid: 20200907 - 20200913



Rainfall deficit of up to 40mm in most parts of Luzon and Visayas is expected while increase of rainfall of up to 100mm in Bukidnon, Lanao provinces and Misamis Occidental during the forecast period.

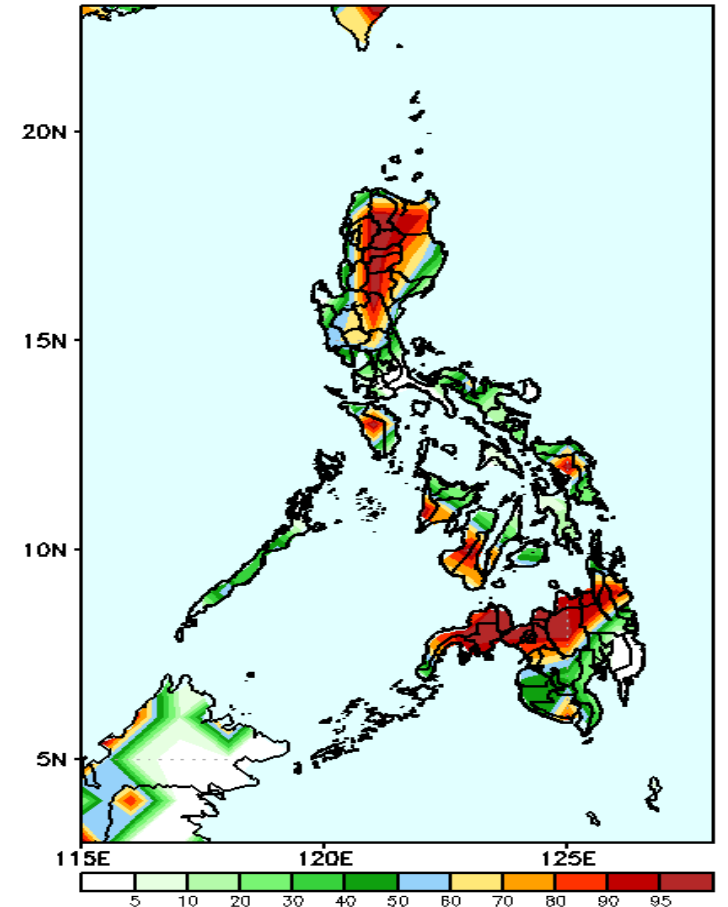
Precip Anomaly and Exceedance Probability > 25/50 mm

GEFS Week-1 Exceedance Prob. > 25mm
Valid: 20200907 - 20200913



High probability of rainfall to exceed 25mm in most parts the country is expected except in Davao Region during the forecast period.

GEFS Week-1 Exceedance Prob. > 50mm
Valid: 20200907 - 20200913

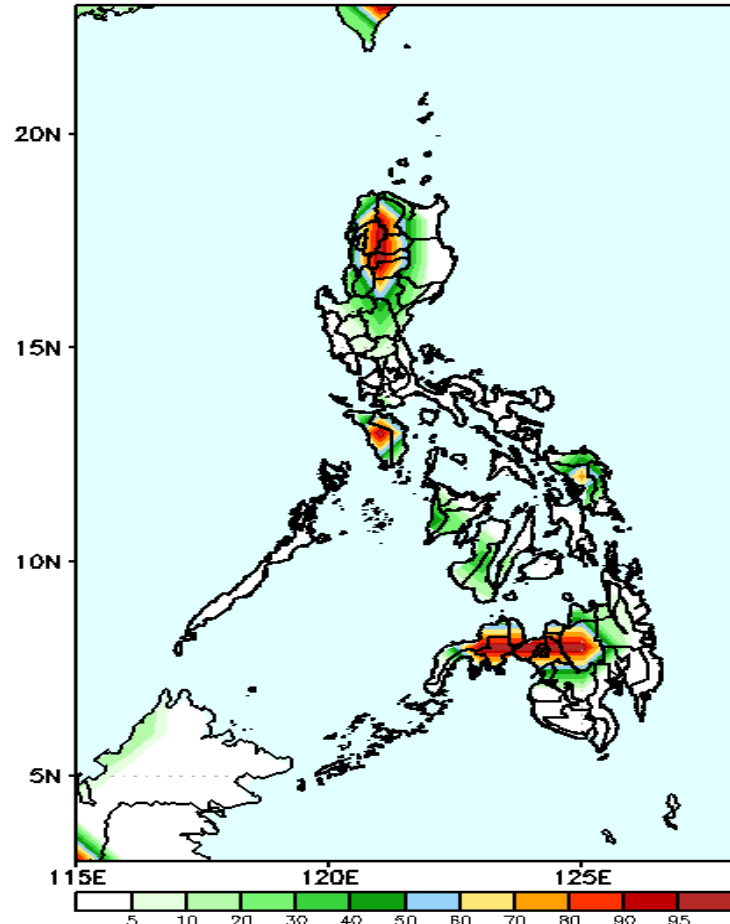


High probability of rainfall to exceed 50mm in most parts of northern half of Luzon, Mindoro, Samar provinces, western Visayas and northern half of Mindanao is expected while less likely for the rest of the country during the forecast period.

Exceedance Probability > 100/150/200 mm

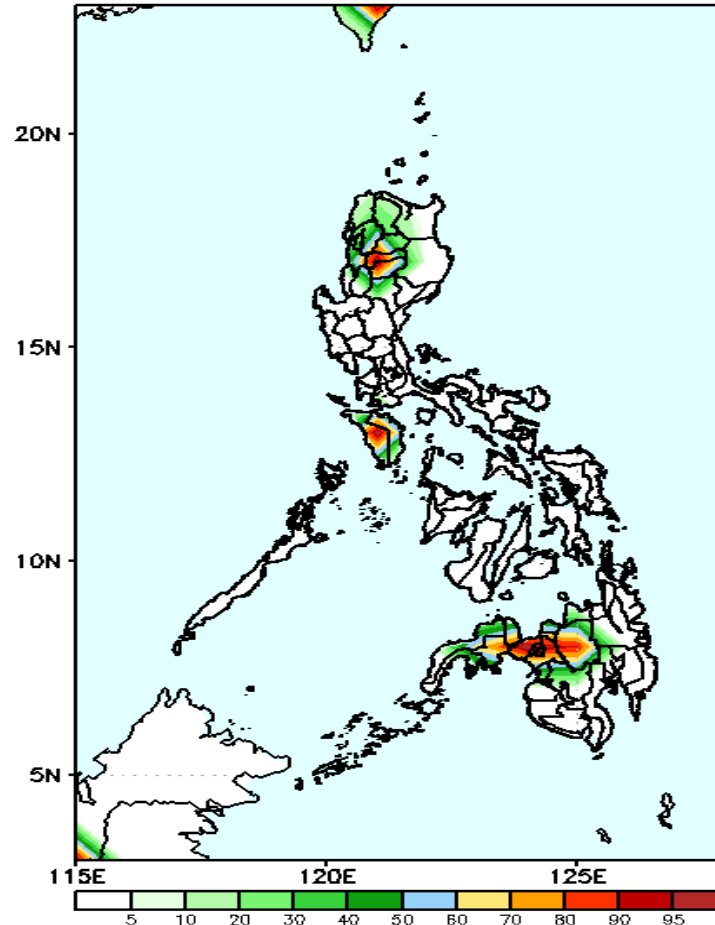
Week 1: Sep 07-13, 2020

GEFS Week-1 Exceedance Prob. > 100mm
Valid: 20200907 - 20200913



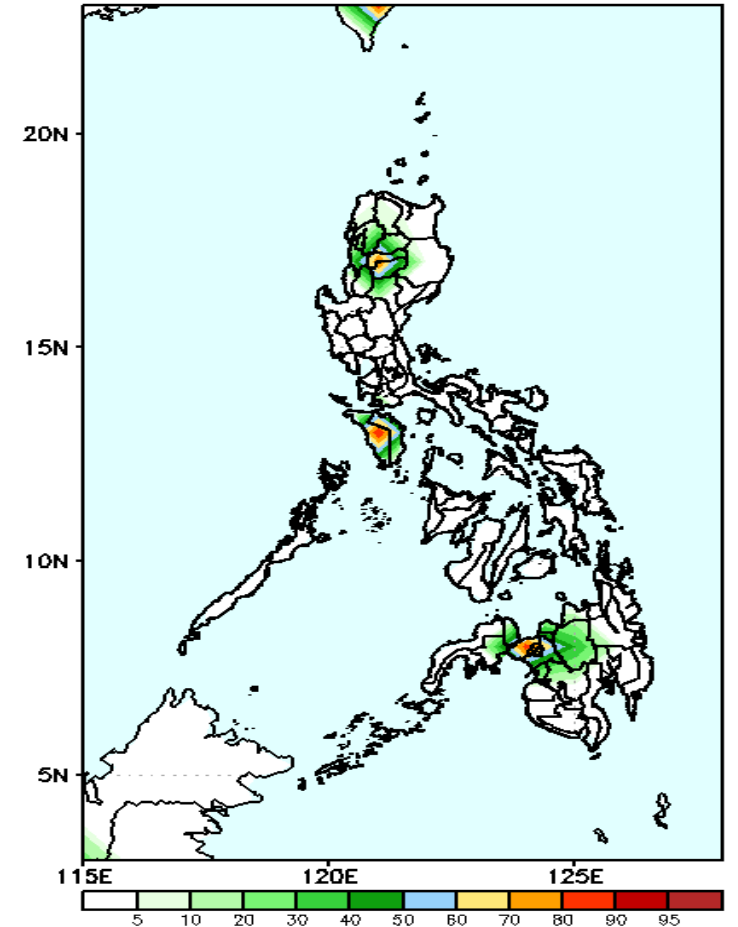
High probability of rainfall to exceed 100mm in most parts of Cordillera Region, Mindoro, Bukidnon, Lanao Provinces and Zamboanga del Sur is expected while less likely for the rest of the country during the forecast period.

GEFS Week-1 Exceedance Prob. > 150mm
Valid: 20200907 - 20200913



60-90% probability of rainfall to exceed 150mm in Mt. Province, Ifugao, Mindoro, Bukidnon, Lanao Provinces and Zamboanga del Sur is expected while less likely for the rest of the country during the forecast period.

GEFS Week-1 Exceedance Prob. > 200mm
Valid: 20200907 - 20200913

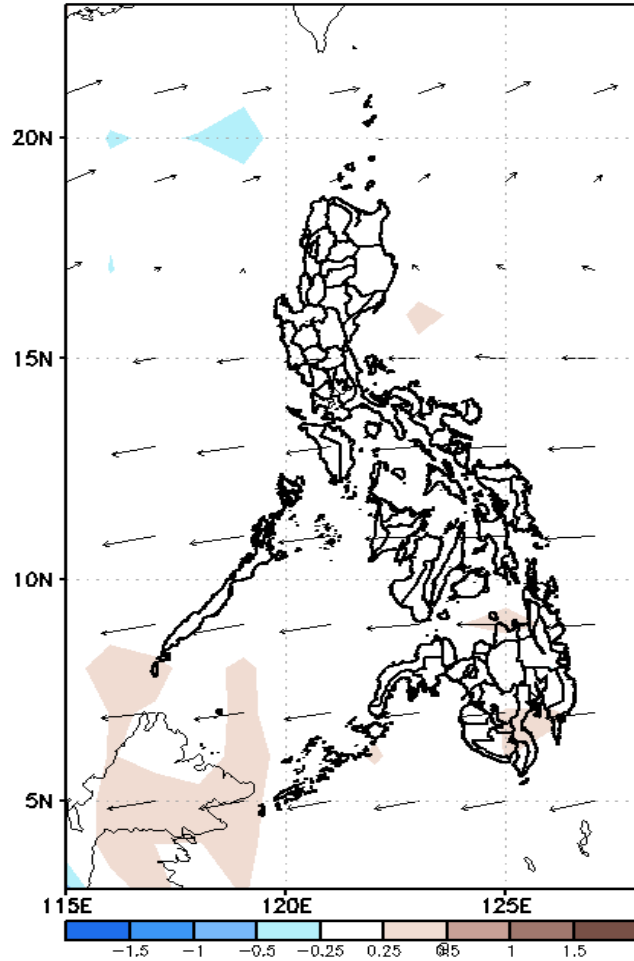


50-85% probability of rainfall to exceed 200mm in Mt. Province, Ifugao, Mindoro and Lanao Provinces is expected while less likely for the rest of the country during the forecast period.

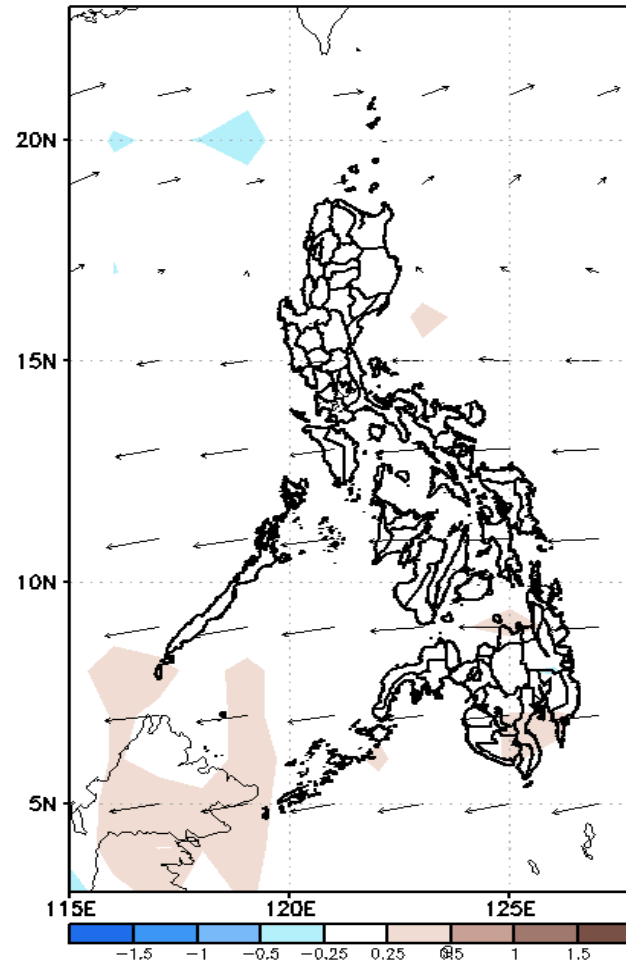
GEFS Week-2 Forecasts: Divergence & Wind Anomaly

Week 2: Sep 14-20, 2020

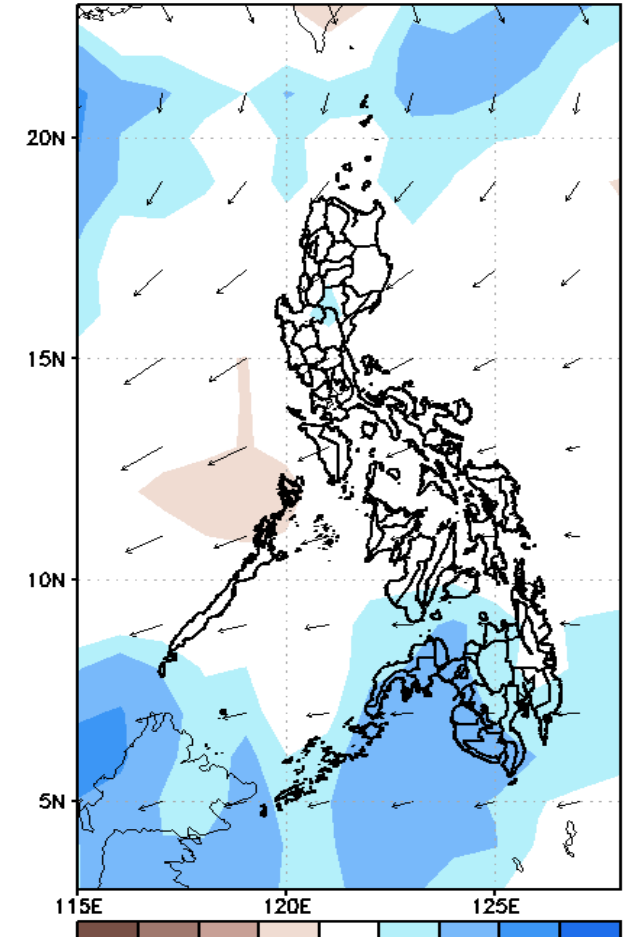
GEFS Week-2 850-hPa Divergence and Wind Anomaly
Valid: 20200914 - 20200920



GEFS Week-2 700-hPa Divergence and Wind Anomaly
Valid: 20200914 - 20200920



GEFS week-2 200-hPa Divergence and Wind Anomaly
Valid: 20200914 - 20200920

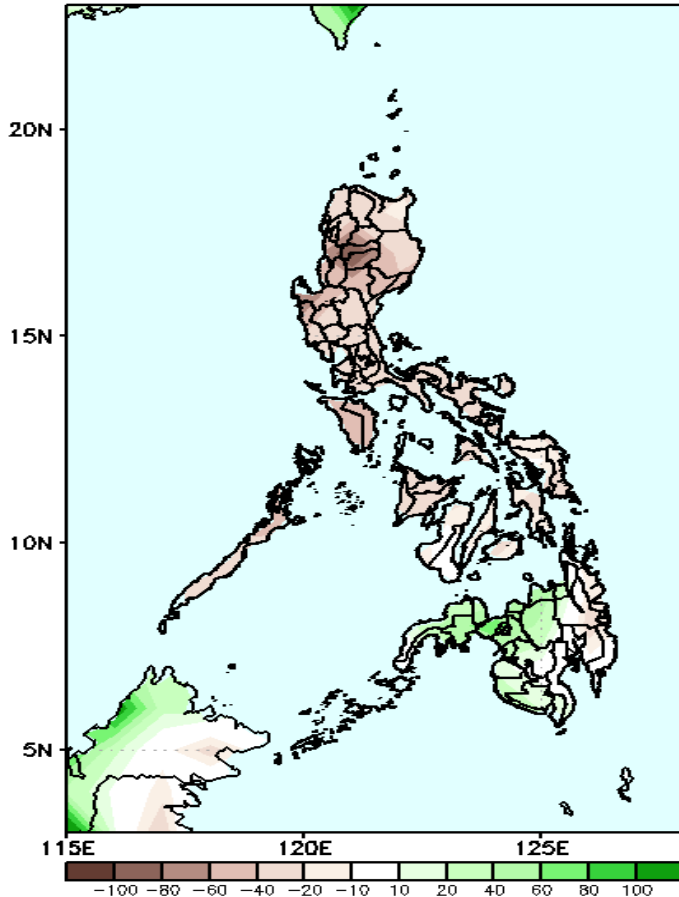


Upper level (200hPa) Divergence suggest likelihood of precipitation in most parts of Mindanao. Easterlies affecting most parts of the country during the forecast period.

Precipitation Anomaly and Exceedance Probability > 25/50 mm

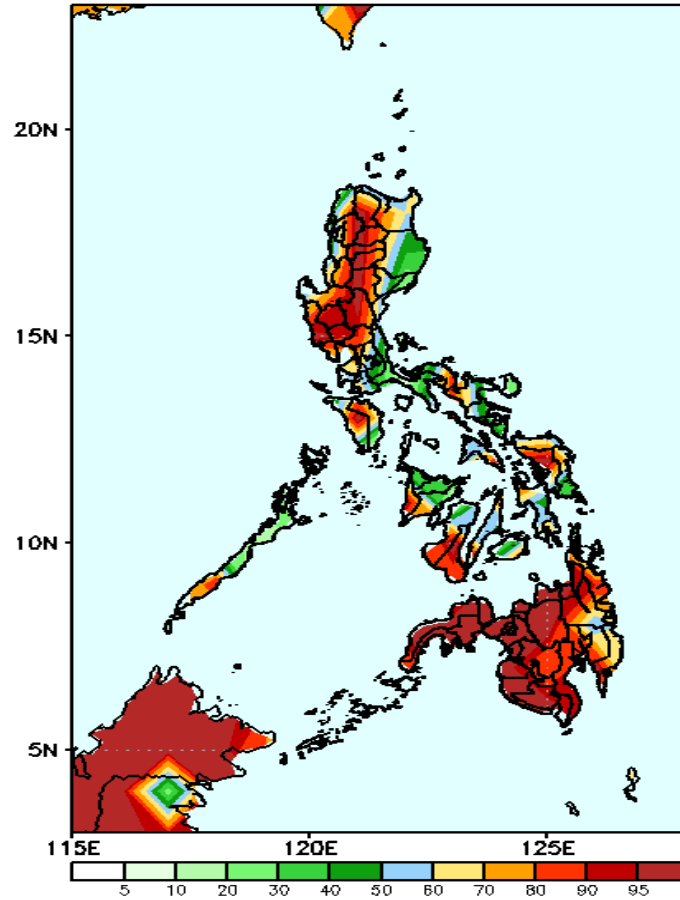
Week 2: Sep 14-20, 2020

GEFS Week-2 Precip Anomaly
Valid: 20200914 - 20200920



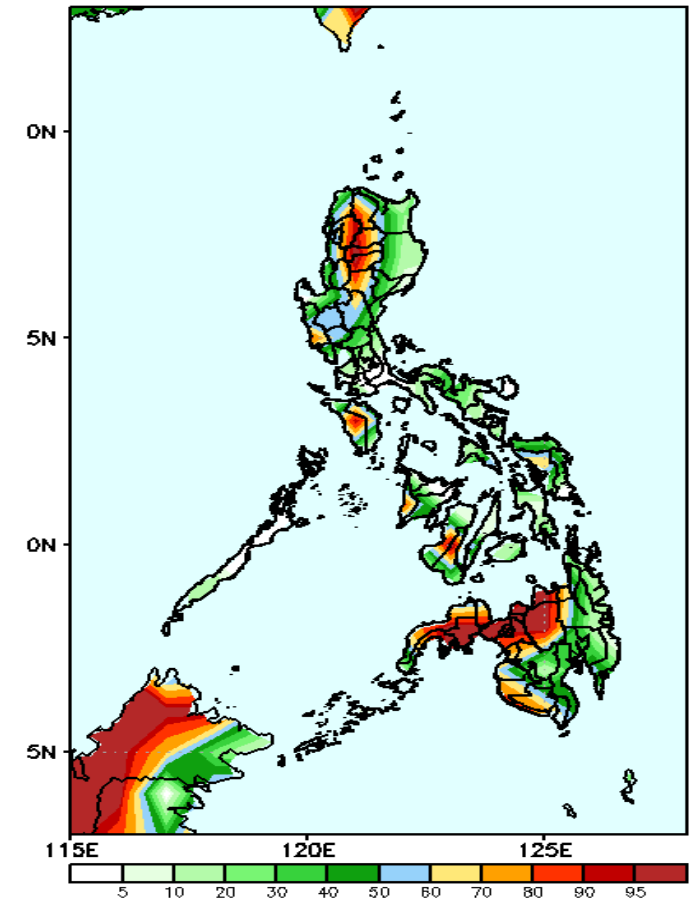
Rainfall deficit of 40-100mm in most parts of Visayas and Mindanao is expected while increase of rainfall of up to 80mm in Bukidnon, Lanao provinces, Misamis Occidental and Zamboanga del Sur during the forecast period.

GEFS Week-2 Exceedance Prob. > 25mm
Valid: 20200914 - 20200920



High probability of rainfall to exceed 25mm in most parts of the country is expected except in Cagayan, Isabela, Quirino, Bicol Region and Central Visayas during the forecast period.

GEFS Week-2 Exceedance Prob. > 50mm
Valid: 20200914 - 20200920

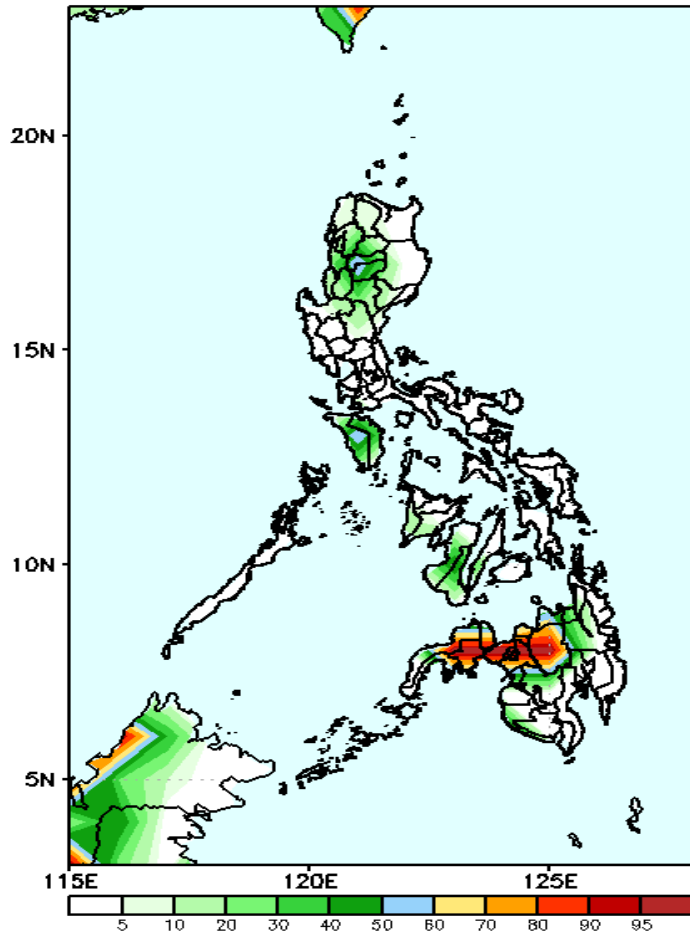


High probability of rainfall to exceed 50mm in most parts of Cordillera Region, Mindoro and in northwestern parts of Mindanao is expected while less likely for the rest of the country during the forecast period.

Exceedance Probability > 100/150/200 mm

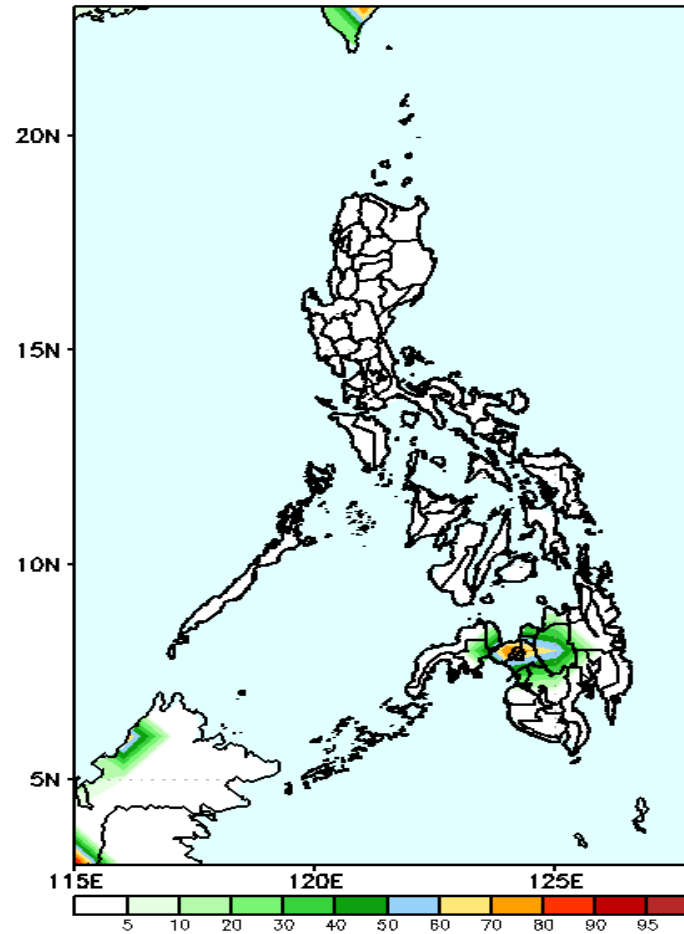
Week 2: Sep 14-20, 2020

GEFS Week-2 Exceedance Prob. > 100mm
Valid: 20200914 - 20200920



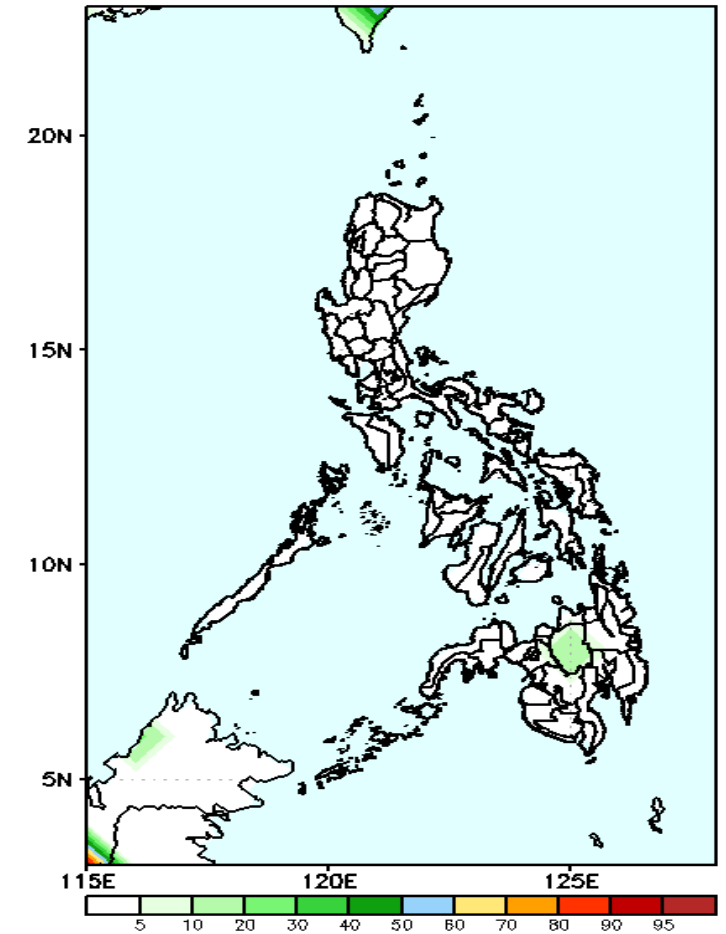
High probability of rainfall to exceed 100mm in Bukidnon, Lanao provinces and Zamboanga del Sur while less likely for the rest of the country during the forecast period.

GEFS Week-2 Exceedance Prob. > 150mm
Valid: 20200914 - 20200920



60-80% probability of rainfall to exceed 100mm in Bukidnon and Lanao Provinces is expected while less likely for the rest of the country during the forecast period.

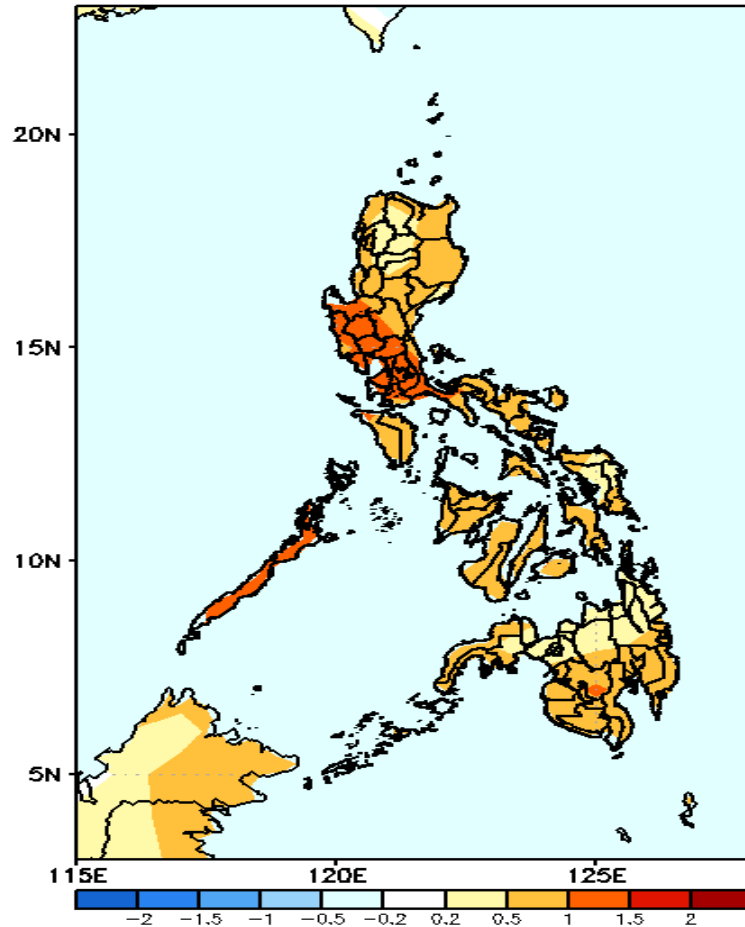
GEFS Week-2 Exceedance Prob. > 200mm
Valid: 20200914 - 20200920



Less probability of rainfall to exceed 200mm in most parts of the country during the forecast period.

GEFS Week-1 & 2 Forecasts: T2m Anomaly

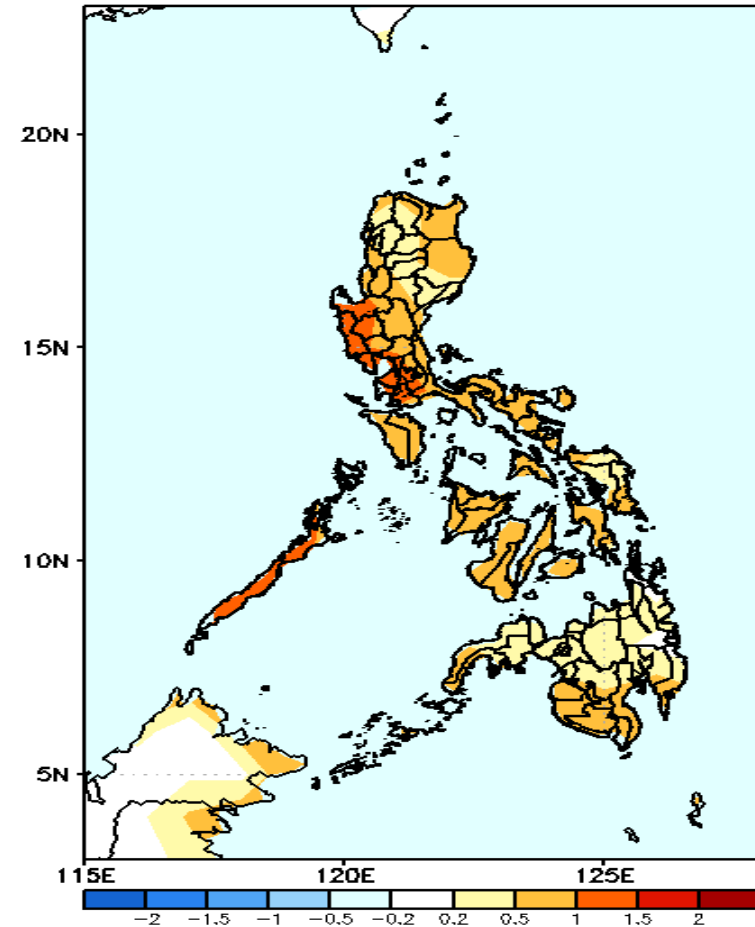
GEFS Week-1 T2m Anomaly
Valid: 20200907 - 20200913



2m Temperature Week 1: Sep 07-13, 2020

Warmer than average surface air temperature will likely experience in central and southern Luzon including Palawan while average to slightly warmer for the rest of the country during the forecast period.

GEFS Week-2 T2m Anomaly
Valid: 20200914 - 20200920



2m Temperature Week 2: Sep 14-20, 2020

Warmer than average surface air temperature will likely experience in central and southern Luzon including Palawan while average to slightly warmer for the rest of the country during the forecast period.