



# Week 1 & Week 2 Forecast for the Philippines using GEFS Model



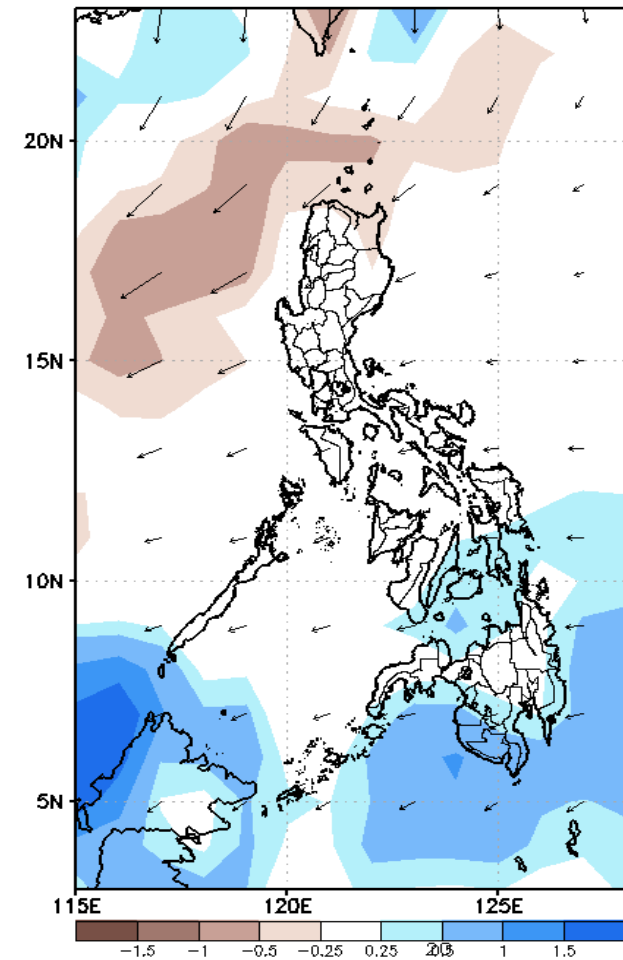
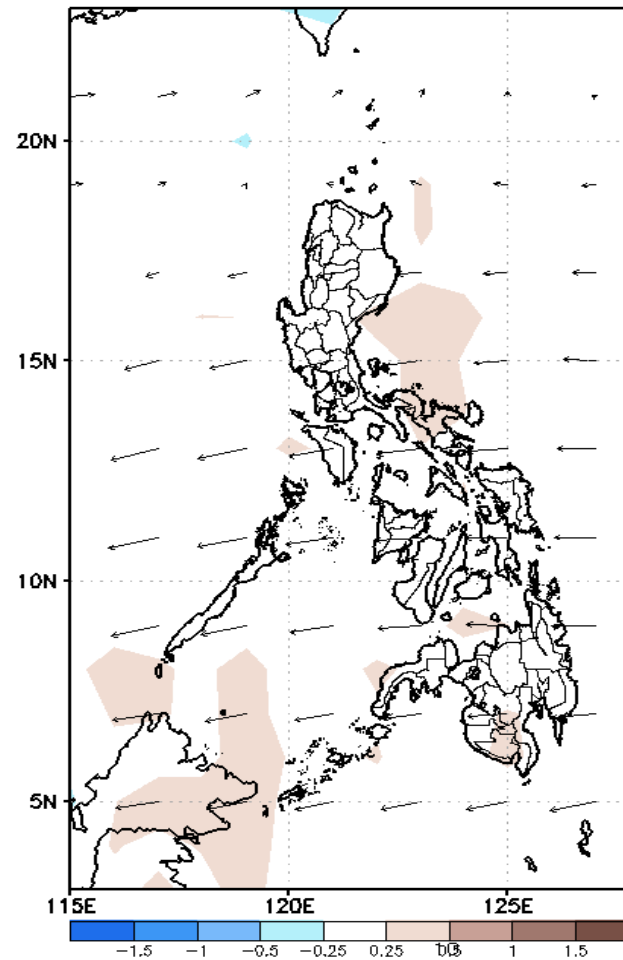
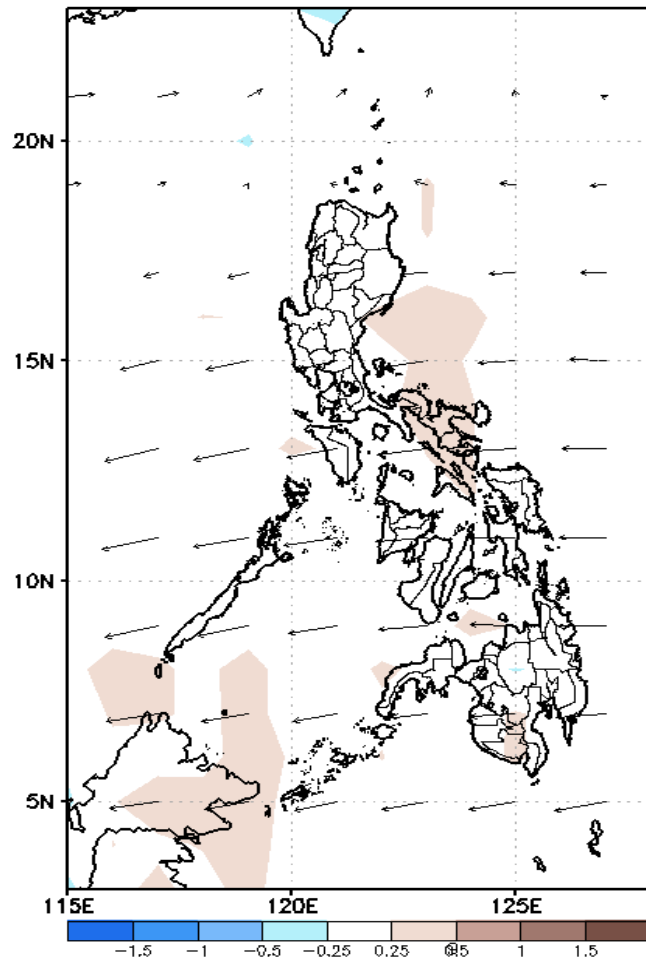
# GEFS Week-1 Forecasts: Divergence & Wind Anomaly

Week 1: Sep 10-16, 2020

GEFS Week-1 850-hPa Divergence and Wind Anom  
Valid: 20200910 - 20200916

GEFS Week-1 700-hPa Divergence and Wind Anom  
Valid: 20200910 - 20200916

GEFS Week-1 200-hPa Divergence and Wind Anom  
Valid: 20200910 - 20200916



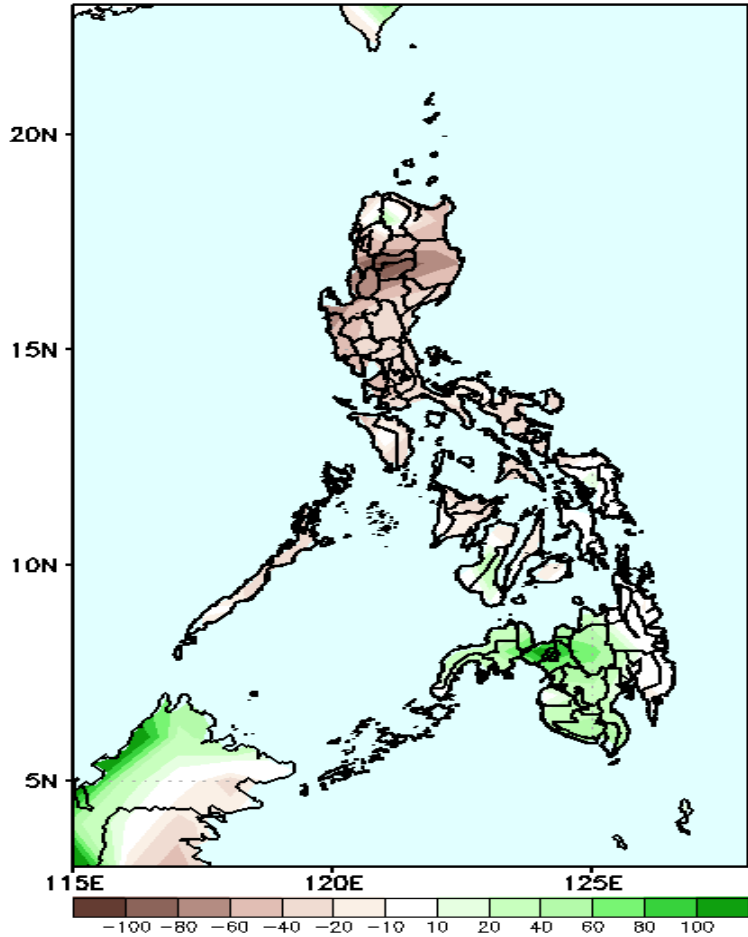
Upper level (200hPa) Divergence suggest likelihood of precipitation in Leyte provinces, central Visayas and most parts of Mindanao. Easterlies affecting most parts of the country during the forecast period.



# Precipitation Anomaly and Exceedance Probability > 25/50 mm

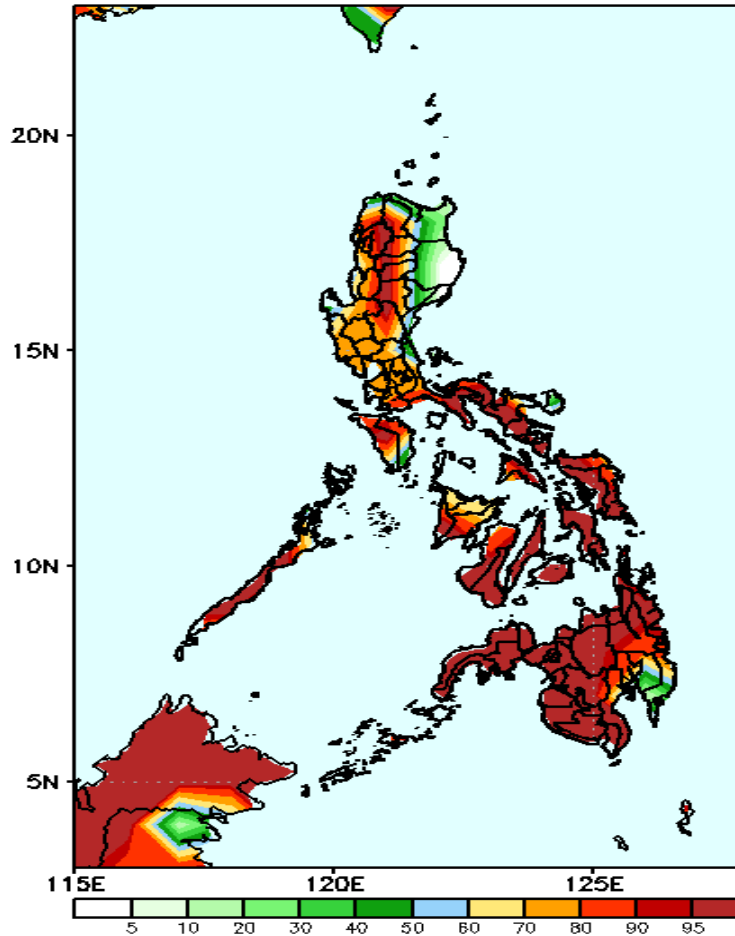
Week 1: Sep 10-16, 2020

GEFS Week-1 Precip Anomaly  
Valid: 20200910 - 20200916



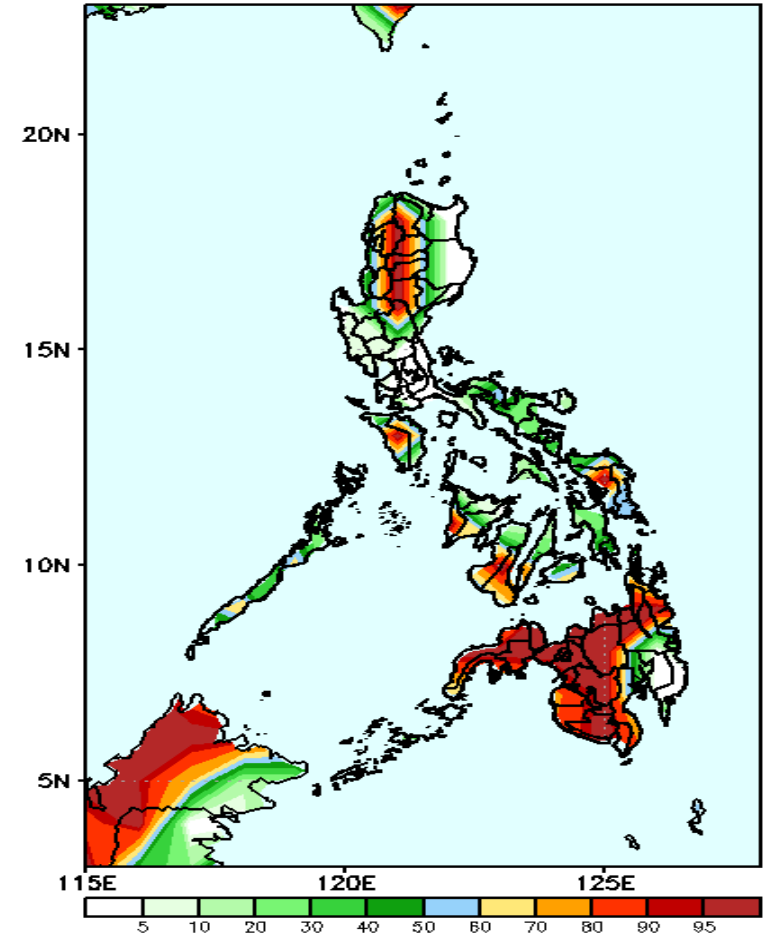
Rainfall deficit of 40-80mm in most parts of Luzon is expected while increase of rainfall of 50-100mm in Northern Mindanao during the forecast period.

GEFS Week-1 Exceedance Prob. > 25mm  
Valid: 20200910 - 20200916



High probability of rainfall to exceed 25mm in most parts the country is expected except in Cagayan, Isabela and Quirino during the forecast period.

GEFS Week-1 Exceedance Prob. > 50mm  
Valid: 20200910 - 20200916

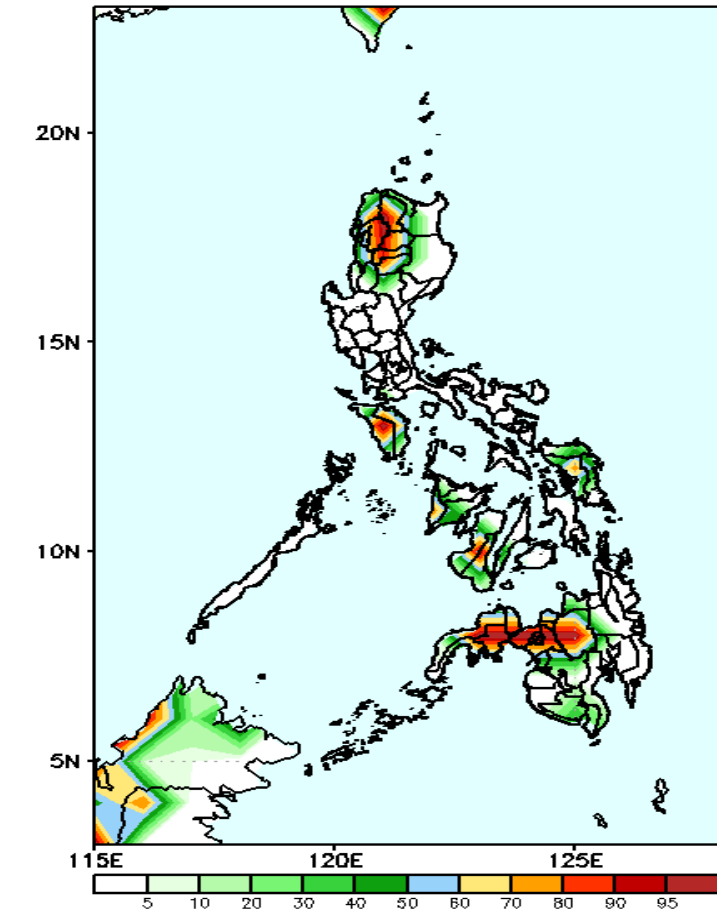


High probability of rainfall to exceed 50mm in Cordillera Region, Mindoro, Samar provinces, western Visayas and most parts of Mindanao while less likely for the rest of the country during the forecast period.

# Exceedance Probability > 100/150/200 mm

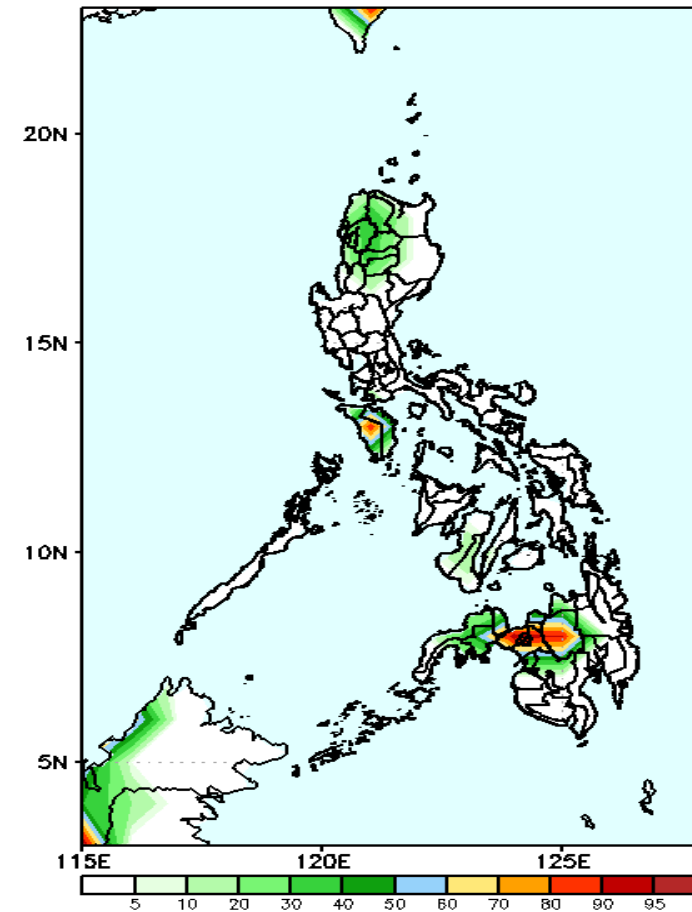
## Week 1: Sep 10-16, 2020

GEFS Week-1 Exceedance Prob. > 100m  
Valid: 20200910 - 20200916



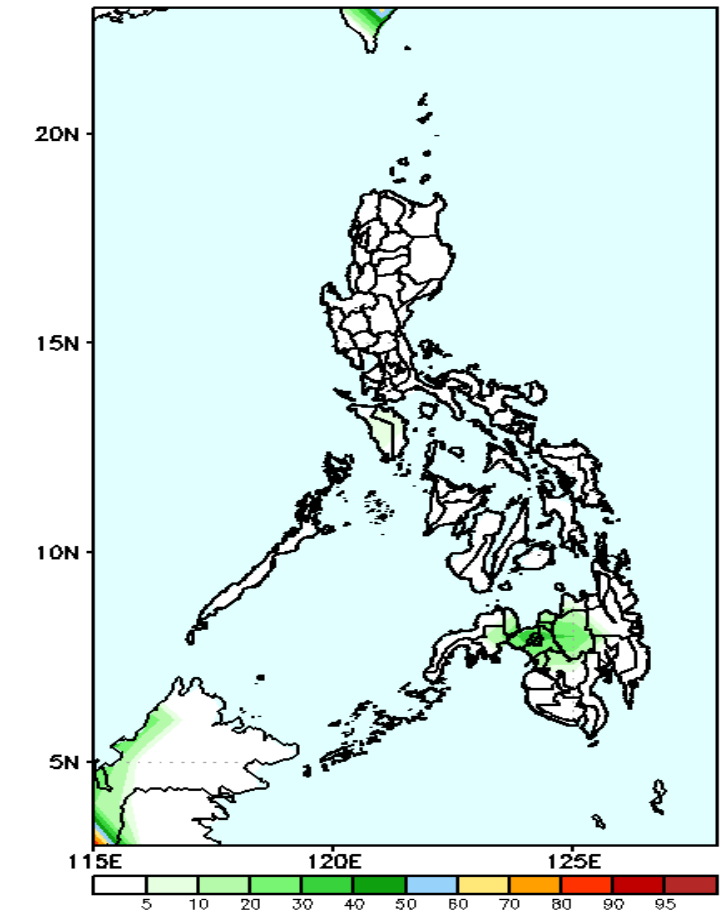
High probability of rainfall to exceed 100mm in most parts of Cordillera Region, Occ. Mindoro, Bukidnon, Lanao Provinces and Zamboanga del Sur is expected while less likely for the rest of the country during the forecast period.

GEFS Week-1 Exceedance Prob. > 150mm  
Valid: 20200910 - 20200916



60-95% probability of rainfall to exceed 100mm in Occ. Mindoro, Bukidnon and Lanao Provinces is expected while less likely for the rest of the country during the forecast period.

GEFS Week-1 Exceedance Prob. > 200mm  
Valid: 20200910 - 20200916



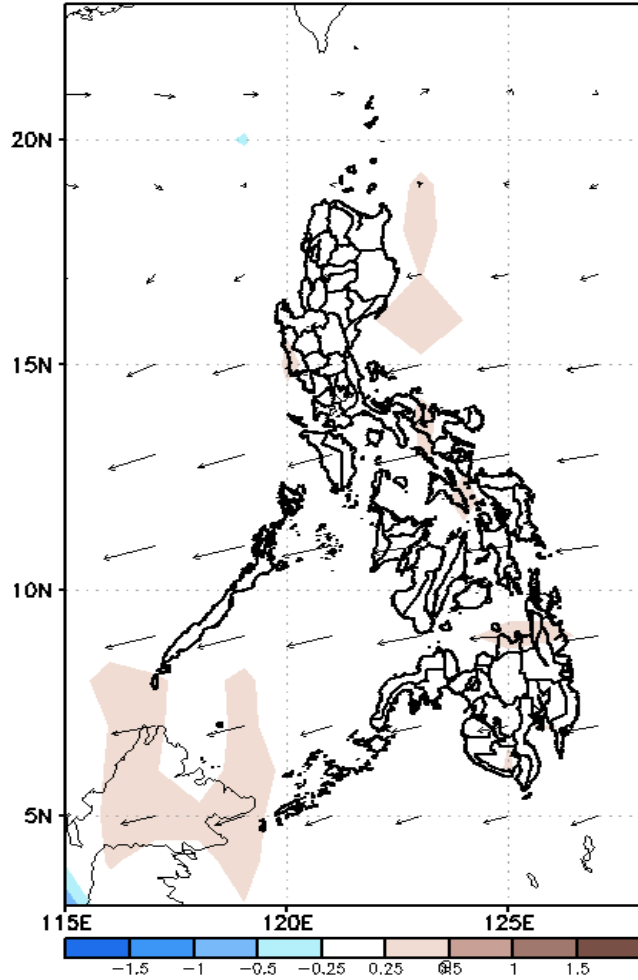
Less probability of rainfall to exceed 200mm in most parts of the country during the forecast period.



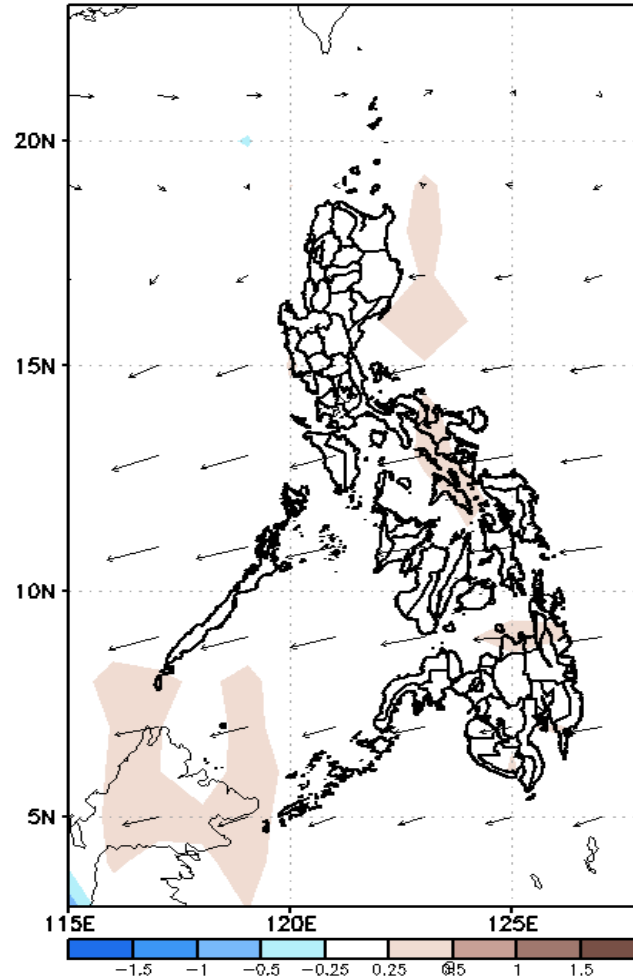
# GEFS Week-2 Forecasts: Divergence & Wind Anomaly

## Week 2: Sep 17-23, 2020

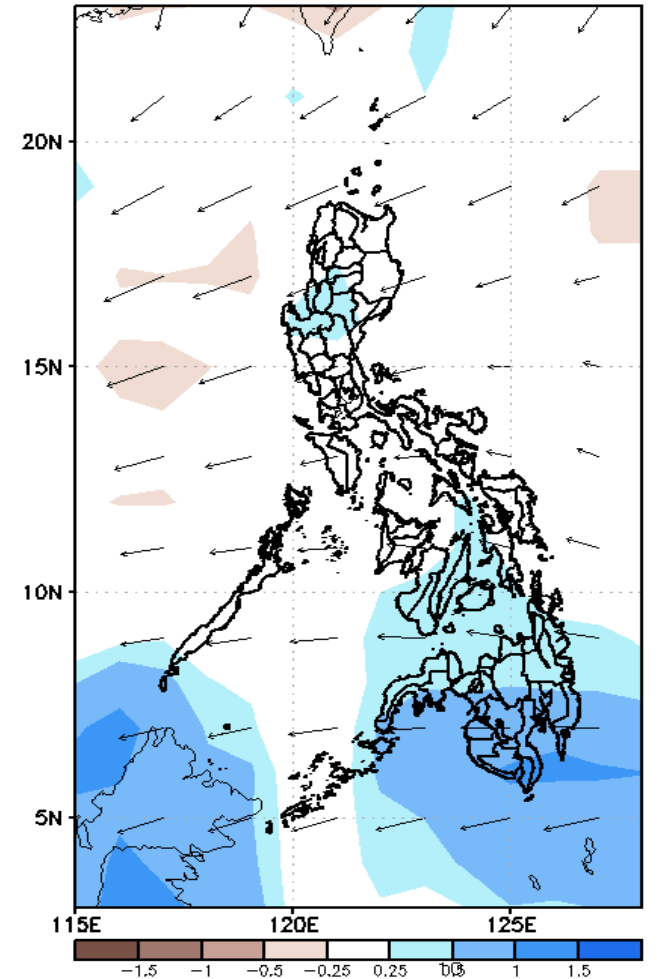
GEFS Week-2 850-hPa Divergence and Wind Anomr  
Valid: 20200917 - 20200923



GEFS Week-2 700-hPa Divergence and Wind Anomr  
Valid: 20200917 - 20200923



GEFS week-2 200-hPa Divergence and Wind Anom  
Valid: 20200917 - 20200923

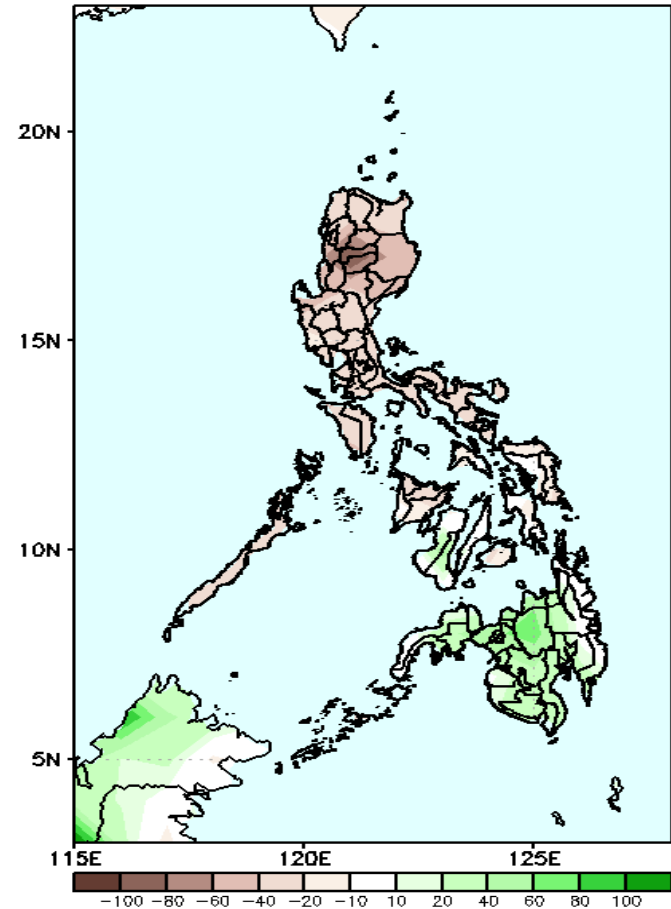


Upper level (200hPa) Divergence suggest likelihood of precipitation in parts of north-central Luzon, central Visayas and most parts of Mindanao. Easterlies affecting most parts of the country during the forecast period.

# Precipitation Anomaly and Exceedance Probability > 25/50 mm

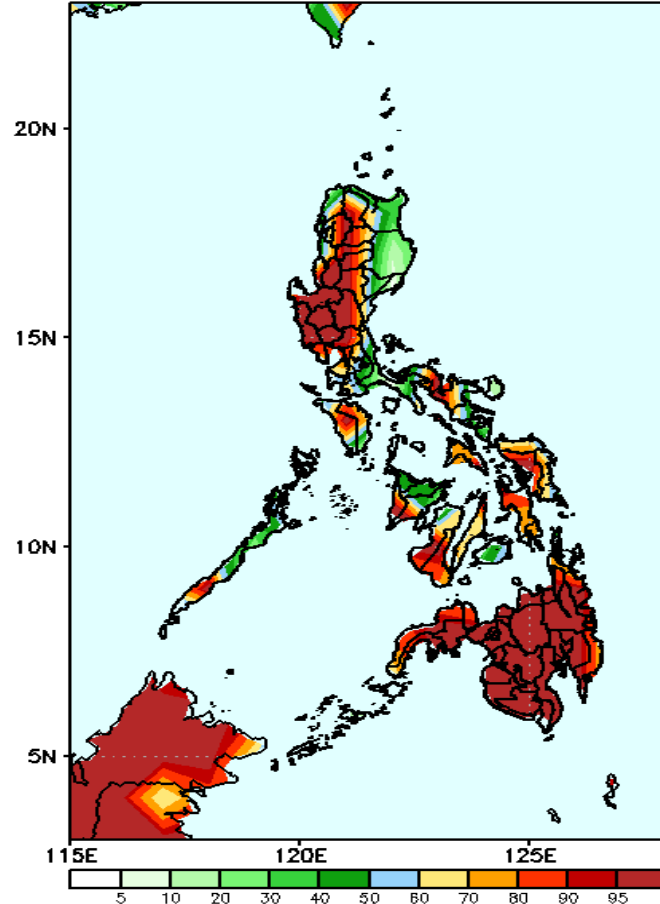
## Week 2: Sep 17-23, 2020

GEFS Week-2 Precip Anomaly  
Valid: 20200917 - 20200923



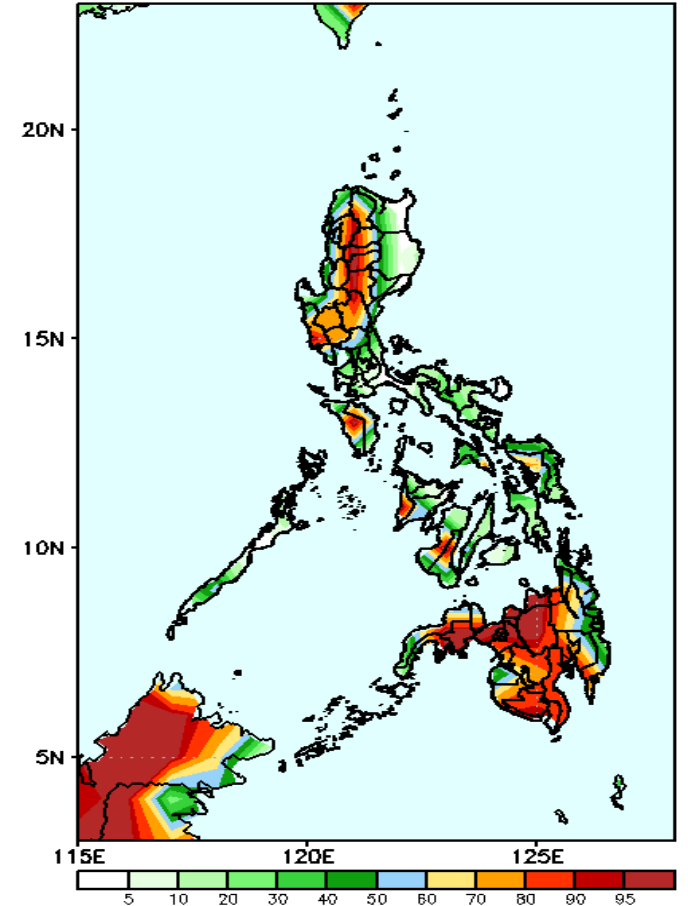
Rainfall deficit of 40-80mm in most parts of Luzon is expected while increase of rainfall of 40-80mm in western Mindanao during the forecast period.

GEFS Week-2 Exceedance Prob. > 25mm  
Valid: 20200917 - 20200923



High probability of rainfall to exceed 25mm in most parts of the country is expected except in Cagayan, Isabela, Quirino, CALABARZON and Central Visayas during the forecast period.

GEFS Week-2 Exceedance Prob. > 50mm  
Valid: 20200917 - 20200923

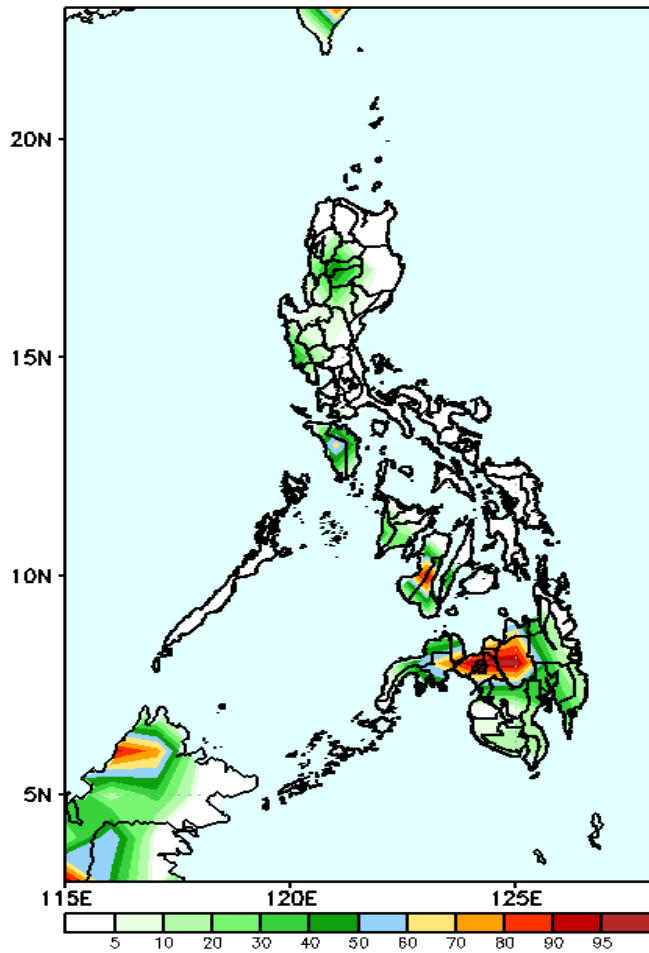


High probability of rainfall to exceed 50mm in most parts of western Luzon and most parts of Mindanao is expected while less likely for the rest of the country during the forecast period.

# Exceedance Probability > 100/150/200 mm

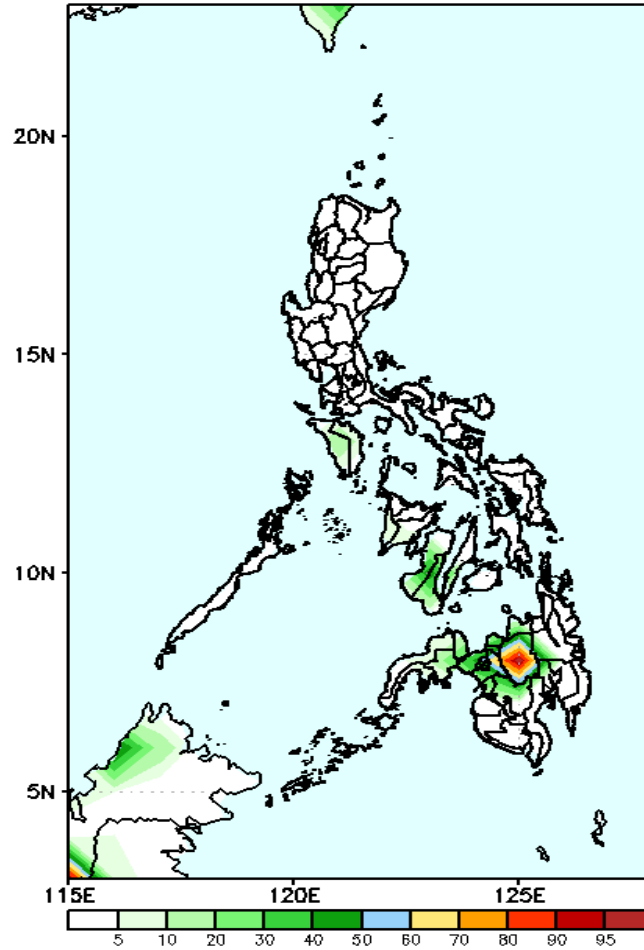
## Week 2: Sep 17-23, 2020

GEFS Week-2 Exceedance Prob. > 100mm  
Valid: 20200917 - 20200923



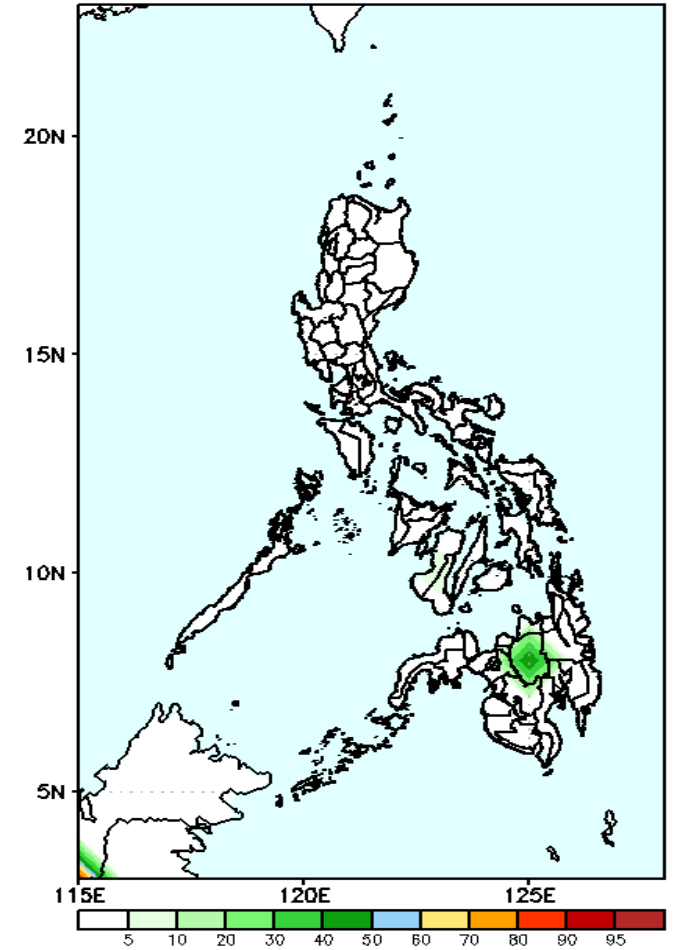
High probability of rainfall to exceed 100mm in Bukidnon and Lanao provinces while less likely for the rest of the country during the forecast period.

GEFS Week-2 Exceedance Prob. > 150mm  
Valid: 20200917 - 20200923



High probability of rainfall to exceed 100mm in Bukidnon while less likely for the rest of the country during the forecast period.

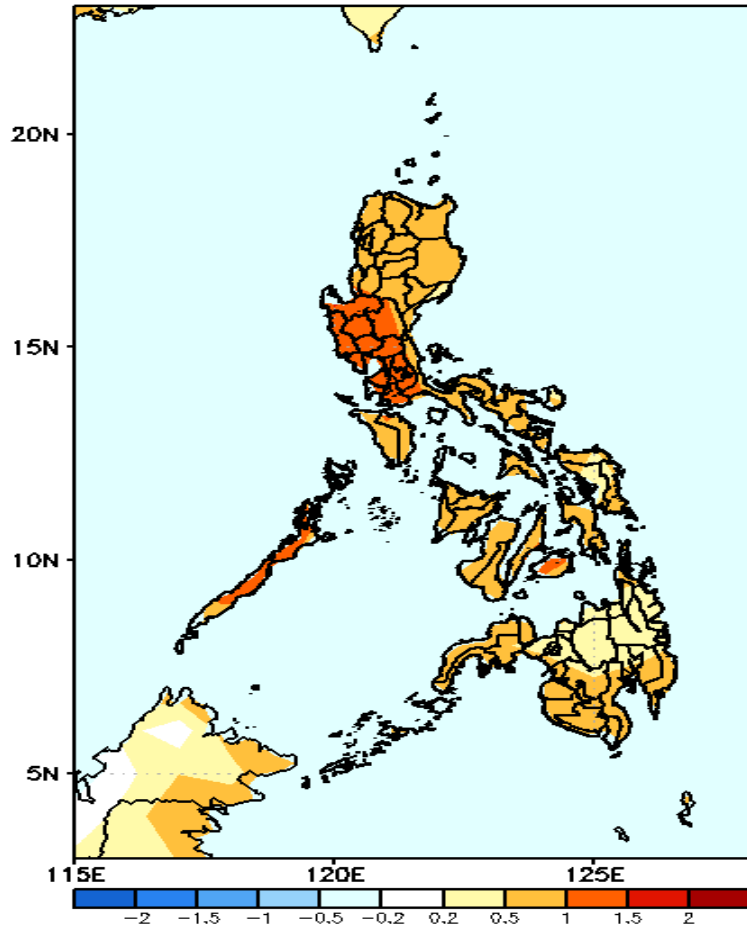
GEFS Week-2 Exceedance Prob. > 200mm  
Valid: 20200917 - 20200923



Less probability of rainfall to exceed 200mm in most parts of the country during the forecast period.

# GEFS Week-1 & 2 Forecasts: T2m Anomaly

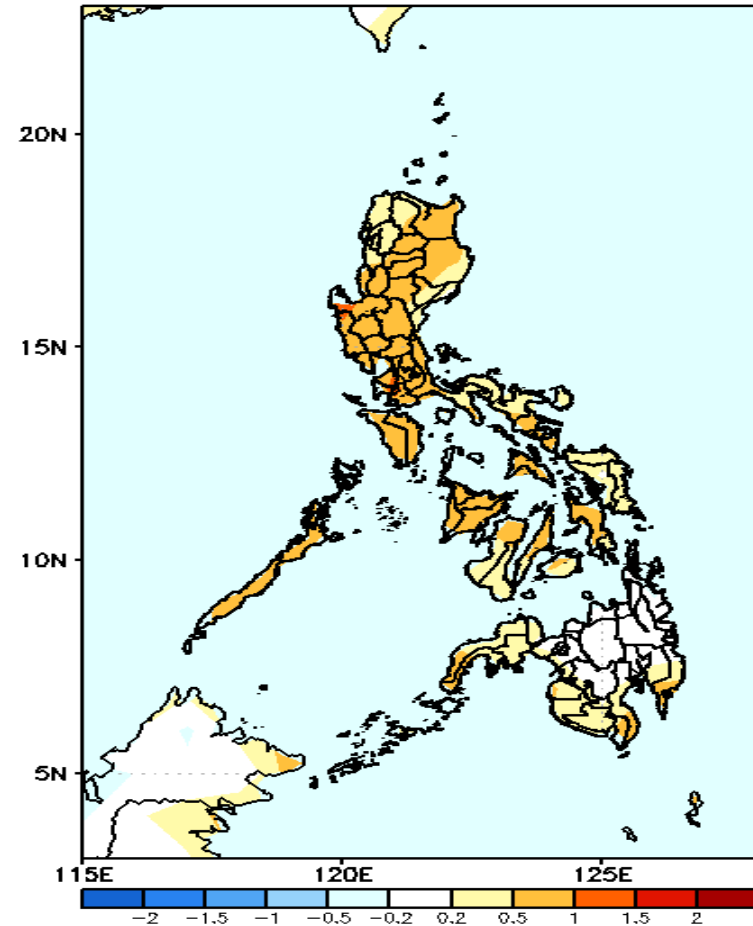
GEFS Week-1 T2m Anomaly  
Valid: 20200910 - 20200916



**2m Temperature Week 1: Sep 10-16, 2020**

Warmer than average surface air temperature will likely experience in central and southern Luzon including Palawan while average to slightly warmer for the rest of the country during the forecast period.

GEFS Week-2 T2m Anomaly  
Valid: 20200917 - 20200923



**2m Temperature Week 2: Sep 17-23, 2020**

Slightly warmer than average surface air temperature will likely experience in most parts of Luzon and Visayas while average surface air temperatures in Mindanao during the forecast period.