



Week 1 & Week 2 Forecast for the Philippines using GEFS Model



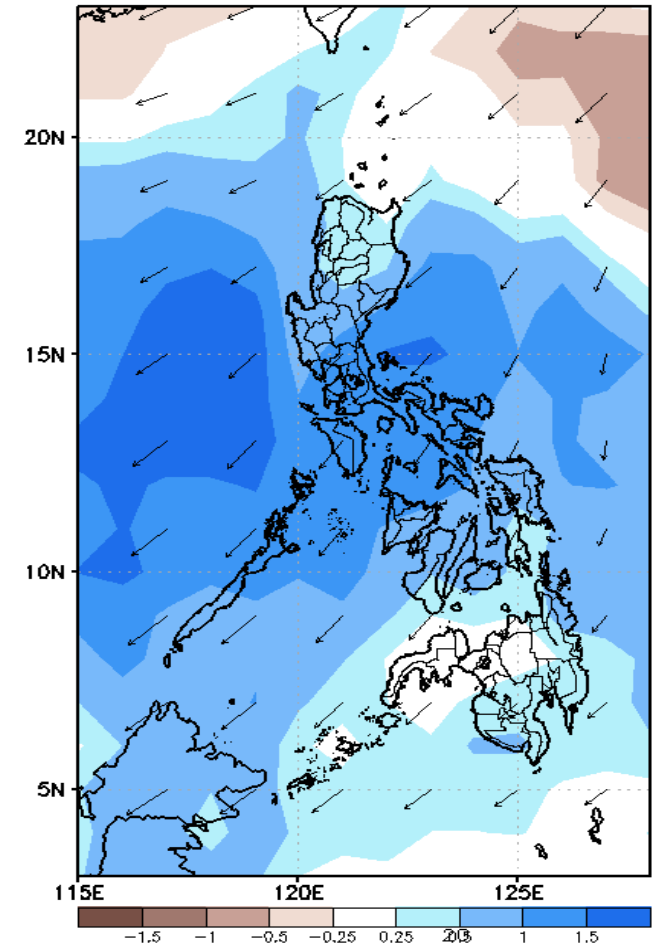
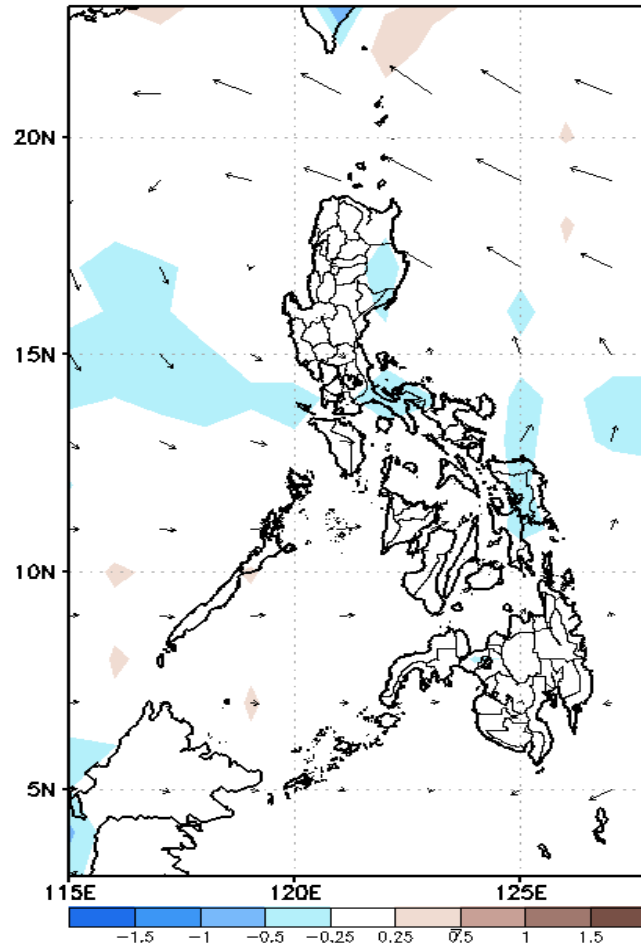
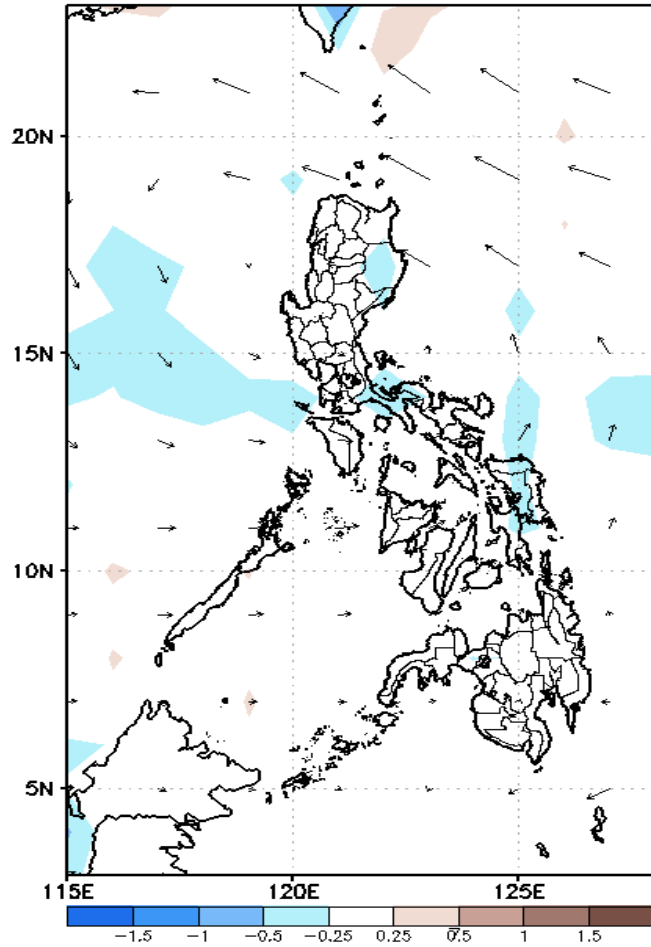
GEFS Week-1 Forecasts: Divergence & Wind Anomaly

Week 1: June 11-17, 2020

GEFS Week-1 850-hPa Divergence and Wind Anom
Valid: 20200611 - 20200617

GEFS Week-1 700-hPa Divergence and Wind Anom
Valid: 20200611 - 20200617

GEFS Week-1 200-hPa Divergence and Wind Anom
Valid: 20200611 - 20200617



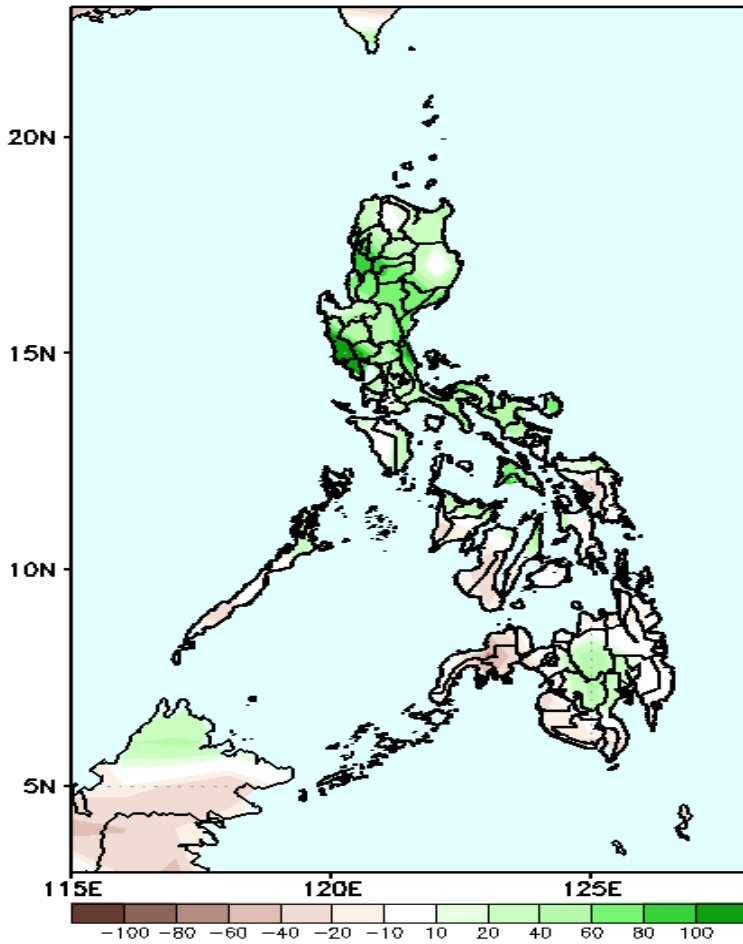
Upper level (200 hPa) Divergence suggest likelihood of precipitation in most parts of the country. Southwesterly windflow affecting most parts of the country during the forecast period.



Precipitation Anomaly and Exceedance Probability > 25/50 mm

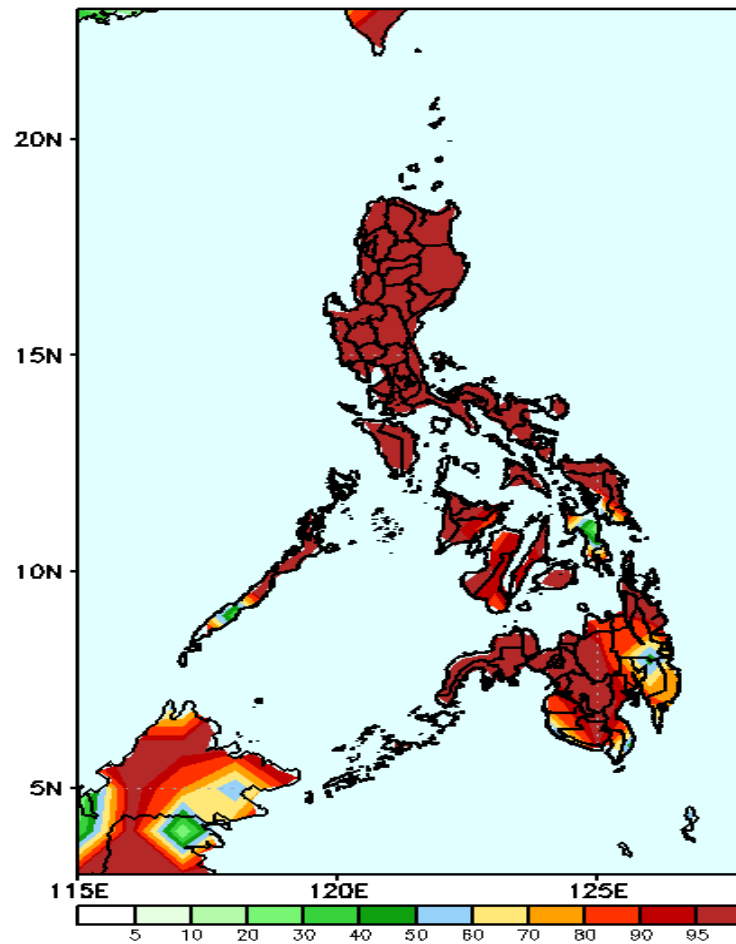
Week 1: June 11-17, 2020

GEFS Week-1 Precip Anomaly
Valid: 20200611 - 20200617



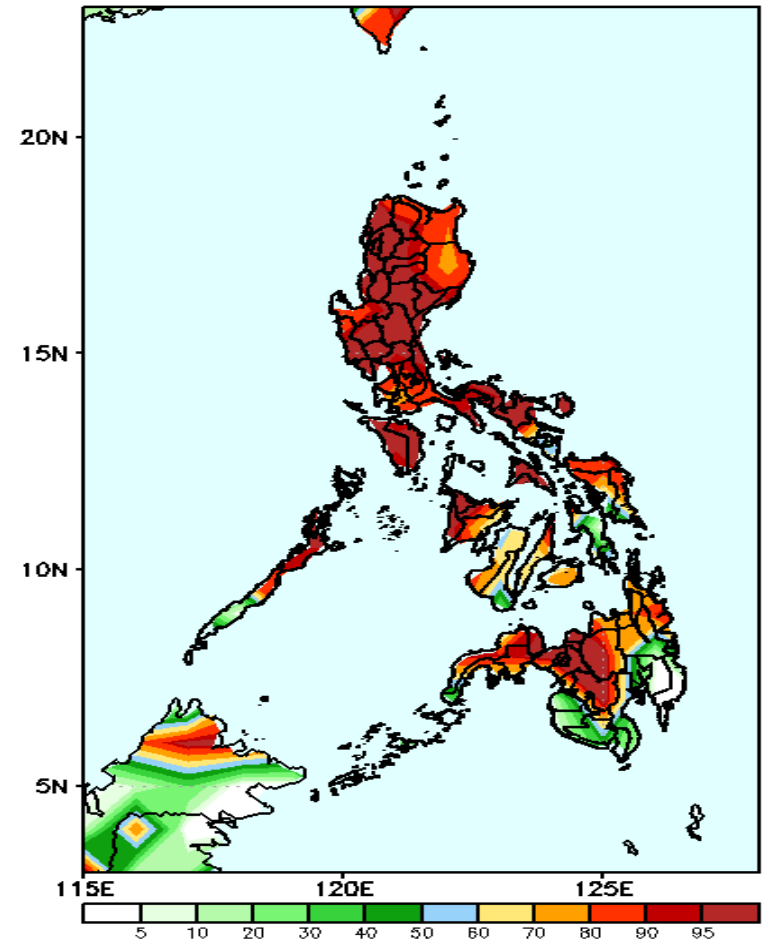
Increase of rainfall up to 100mm in Luzon is expected while 10-60mm increase of rainfall in Visayas and Mindanao during the forecast period.

GEFS Week-1 Exceedance Prob. > 25mm
Valid: 20200611 - 20200617



High probability of rainfall to exceed 25mm in most parts of the country.

GEFS Week-1 Exceedance Prob. > 50mm
Valid: 20200611 - 20200617



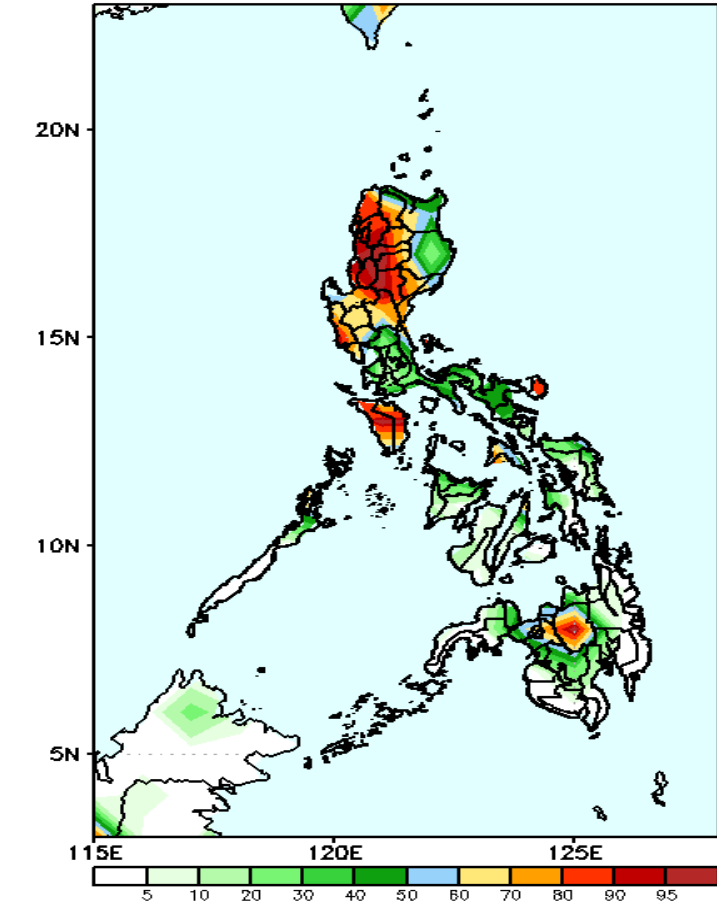
High probability of rainfall to exceed 50mm in most parts of the country except in southern parts of Mindanao during the forecast period.



Exceedance Probability > 100/150/200 mm

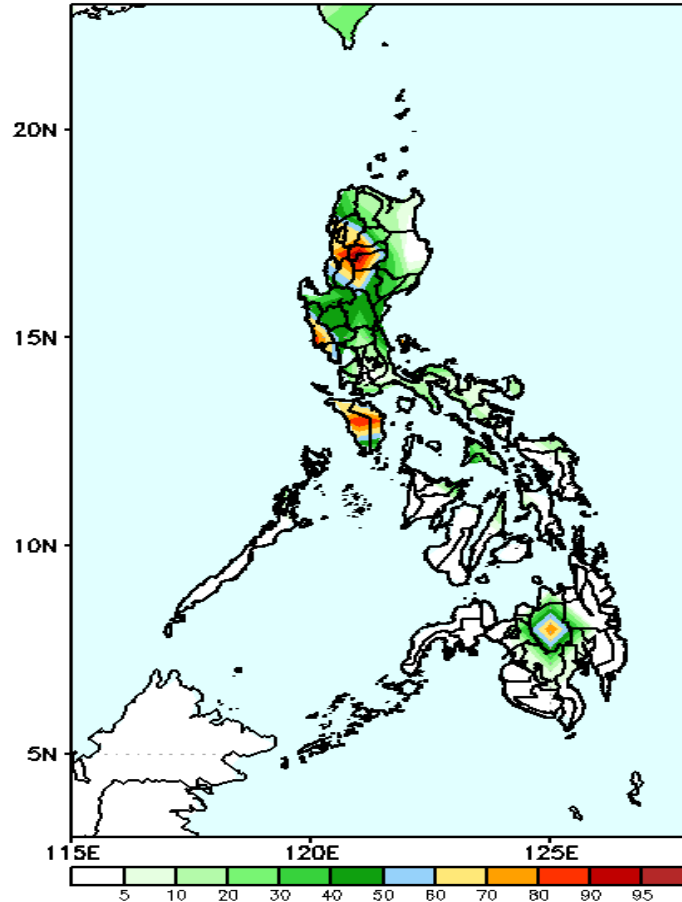
Week 1: June 11-17, 2020

GEFS Week-1 Exceedance Prob. > 100mm
Valid: 20200611 - 20200617



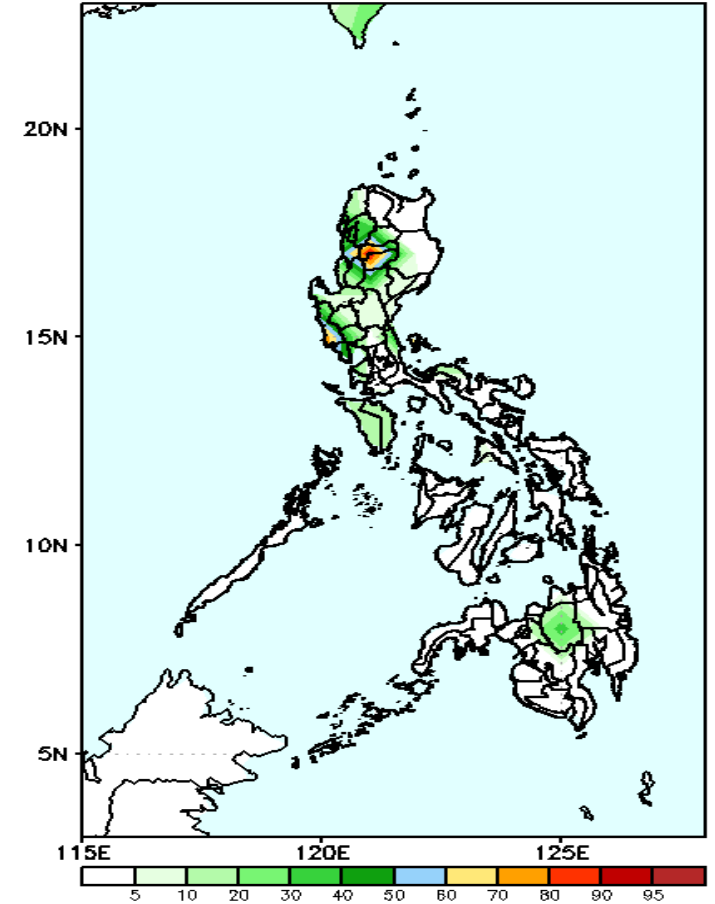
High probability of rainfall to exceed 100mm in western and central parts of Luzon, Mindoro, Catanduanes and in Bukidnon while less likely for the rest of the country during the forecast period.

GEFS Week-1 Exceedance Prob. > 150mm
Valid: 20200611 - 20200617



50-95% probability of rainfall to exceed 150mm in Cordillera Region, Mindoro and Bukidnon while less likely for the rest of the country during the forecast period.

GEFS Week-1 Exceedance Prob. > 200mm
Valid: 20200611 - 20200617



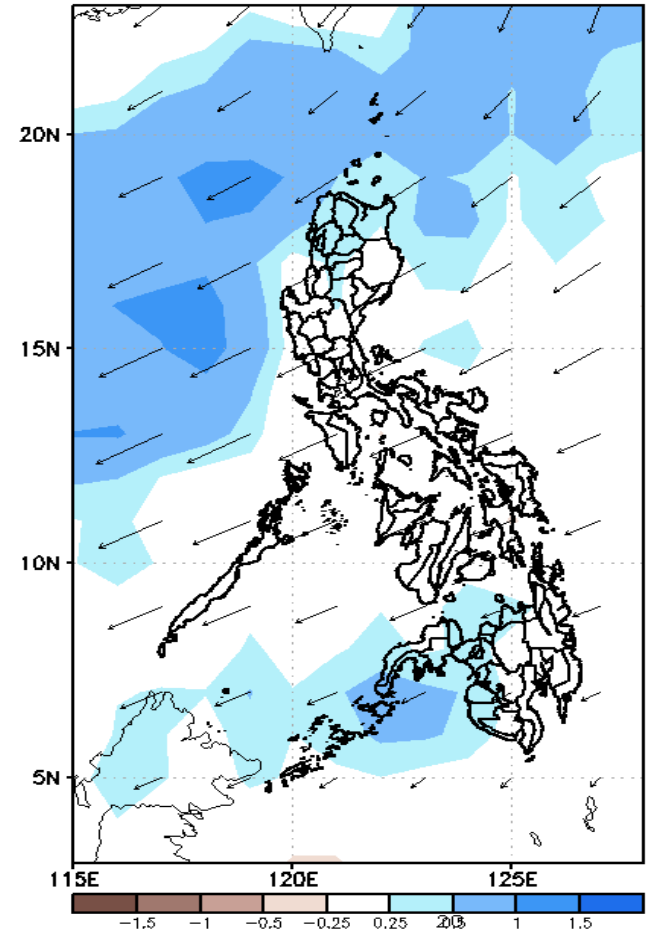
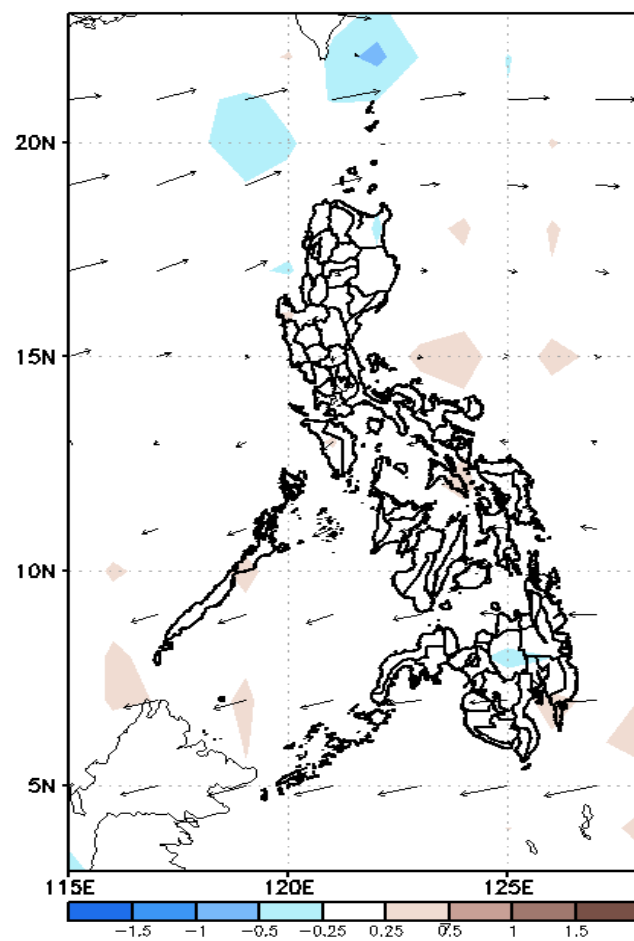
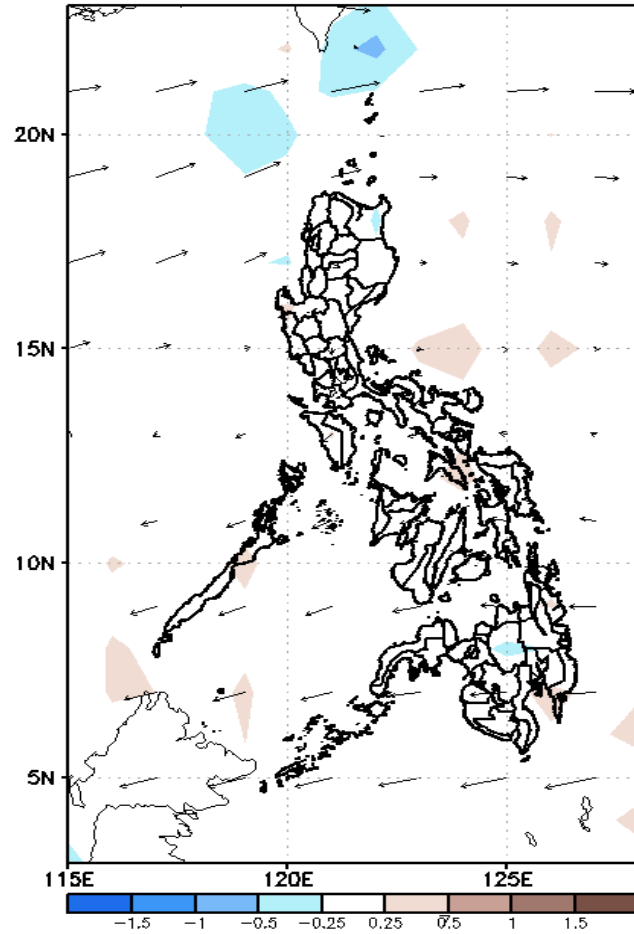
40-90% probability of rainfall to exceed 200mm in Cordillera Region while less likely for the rest of the country during the forecast period.



GEFS Week-2 Forecasts: Divergence & Wind Anomaly

Week 2: June 18-24, 2020

GEFS Week-2 850-hPa Divergence and Wind Anom Valid: 20200618 - 20200624 GEFS Week-2 700-hPa Divergence and Wind Anom Valid: 20200618 - 20200624 GEFS week-2 200-hPa Divergence and Wind Anom Valid: 20200618 - 20200624



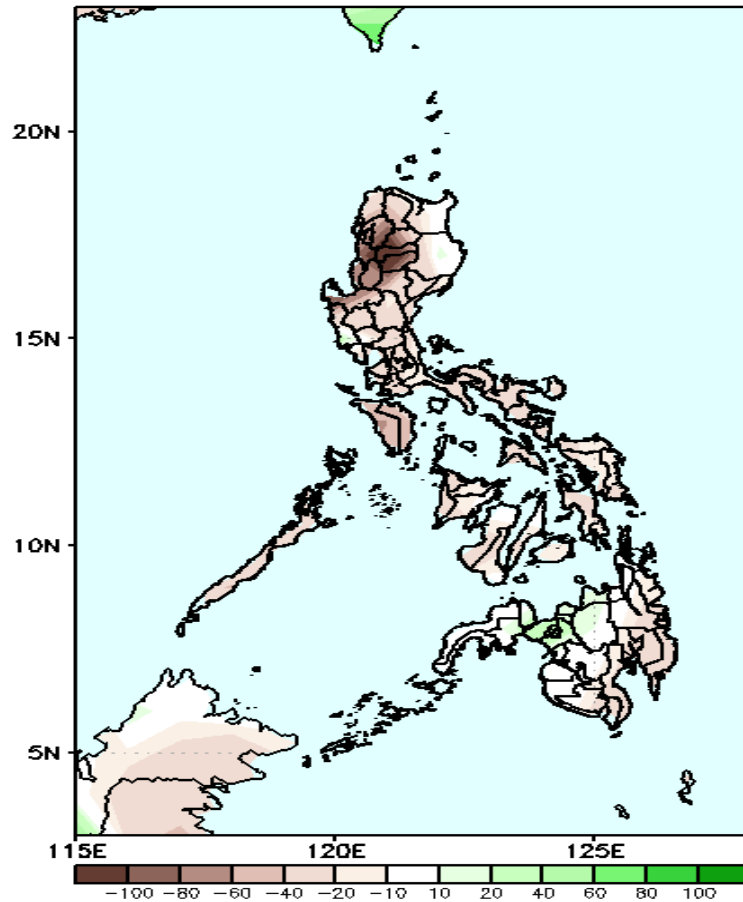
Upper level (200 hPa) Divergence suggest likelihood of precipitation in some parts of northern Luzon and western Mindanao. Southwesterly windflow affecting Luzon while easterlies affecting most parts of Visayas and Mindanao during the forecast period.



Precipitation Anomaly and Exceedance Probability > 25/50 mm

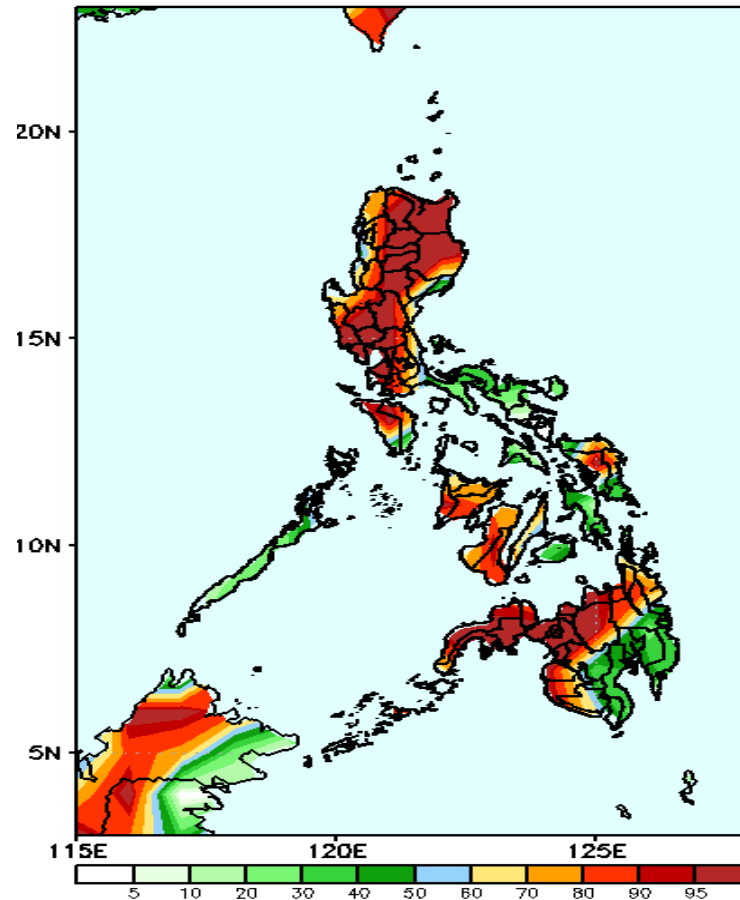
Week 2: June 18-24, 2020

GEFS Week-2 Precip Anomaly
Valid: 20200618 - 20200624



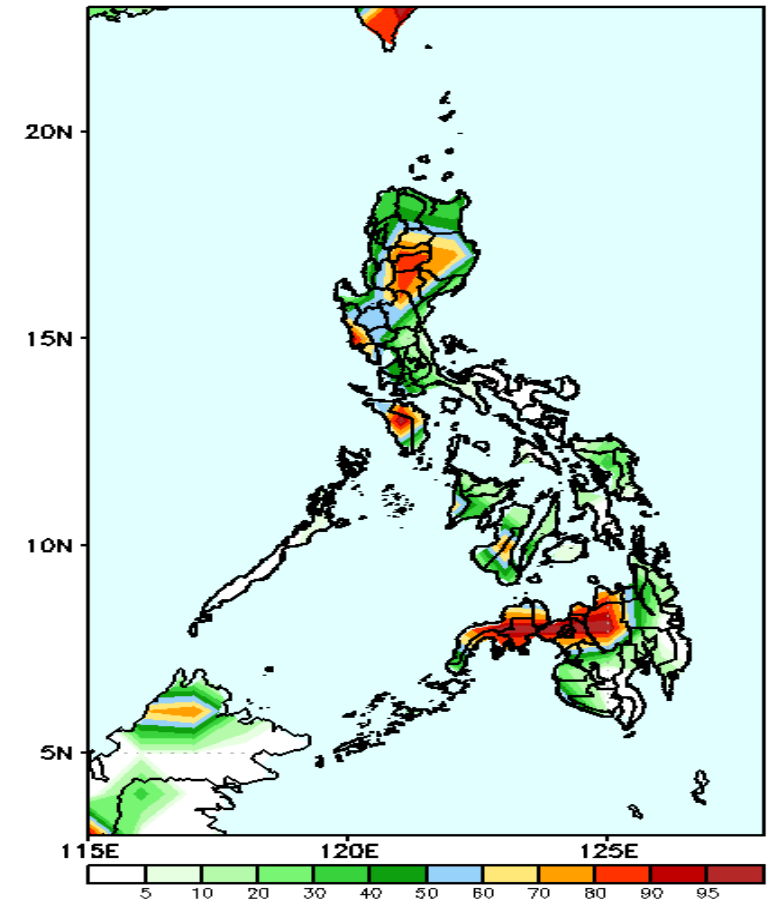
Rainfall deficit of up to 100mm is expected in Luzon while up to 40mm rainfall deficit for the rest of the country during the forecast period.

GEFS Week-2 Exceedance Prob. > 25mm
Valid: 20200618 - 20200624



High probability of rainfall to exceed 25mm in most parts of the country except Bicol Region, central Visayas and southern parts of Mindanao during the forecast period.

GEFS Week-2 Exceedance Prob. > 50mm
Valid: 20200618 - 20200624

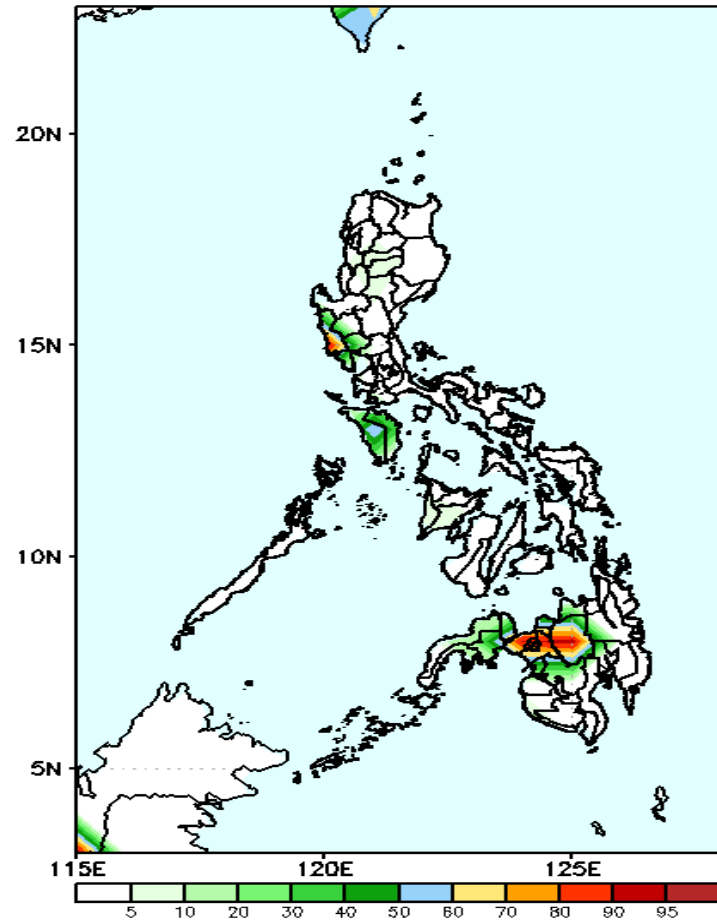


High probability of rainfall to exceed 50mm in Cordillera Region, Cagayan Valley, Mindoro, northern Mindanao & Zamboanga Peninsula while less likely for the rest of the country during the forecast period.

Exceedance Probability > 100/150/200 mm

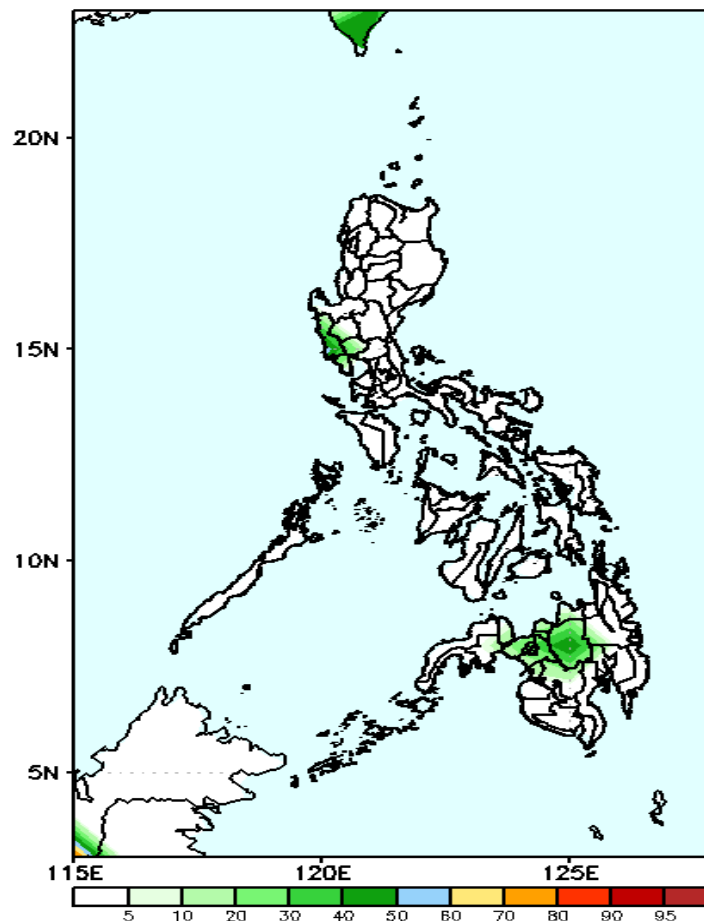
Week 2: June 18-24, 2020

GEFS Week-2 Exceedance Prob. > 100mm
Valid: 20200618 - 20200624



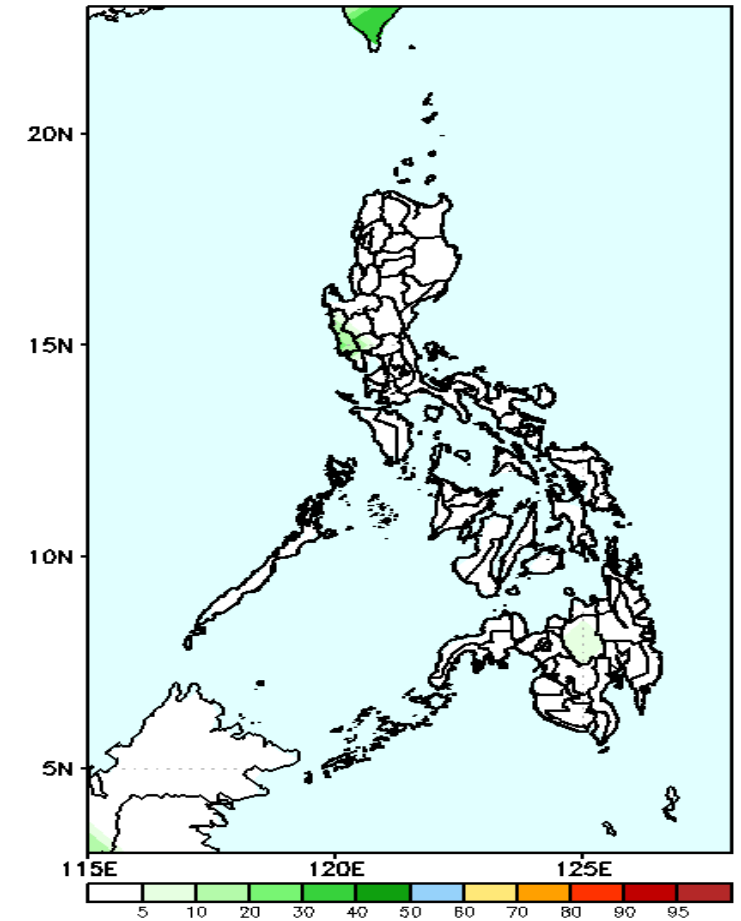
60-95% probability of rainfall to exceed 100mm in Zambales and northern Mindanao while less likely for the rest of the country during the forecast period.

GEFS Week-2 Exceedance Prob. > 150mm
Valid: 20200618 - 20200624



Less probability of rainfall to exceed 150mm in most parts of the country during the forecast period.

GEFS Week-2 Exceedance Prob. > 200mm
Valid: 20200618 - 20200624

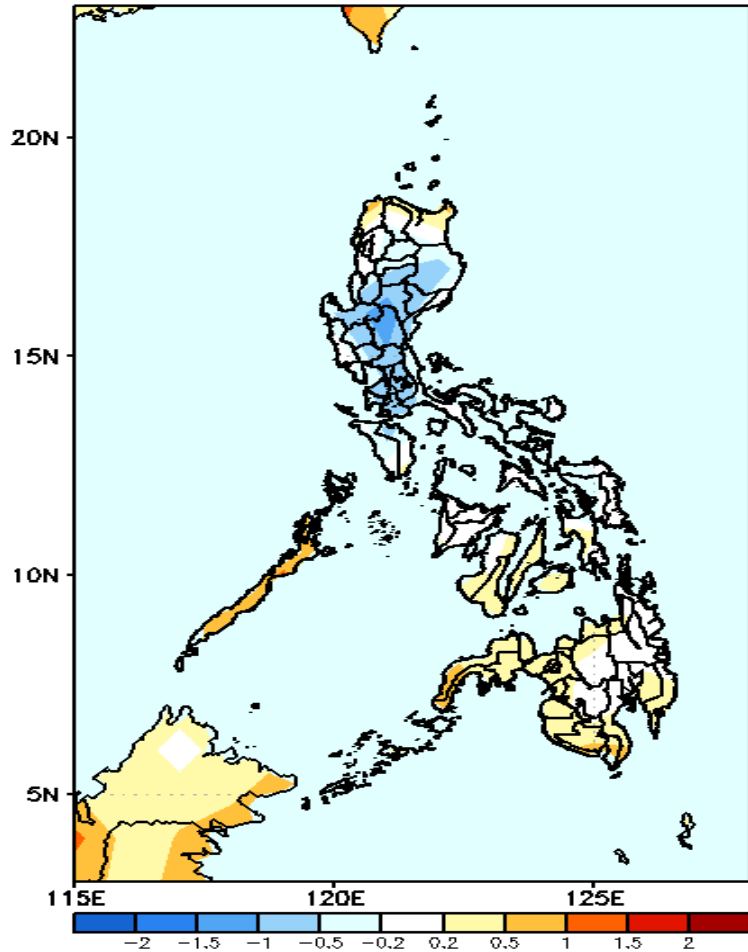


Less probability of rainfall to exceed 200mm in most parts of the country during the forecast period.



GEFS Week-1 & 2 Forecasts: T2m Anomaly

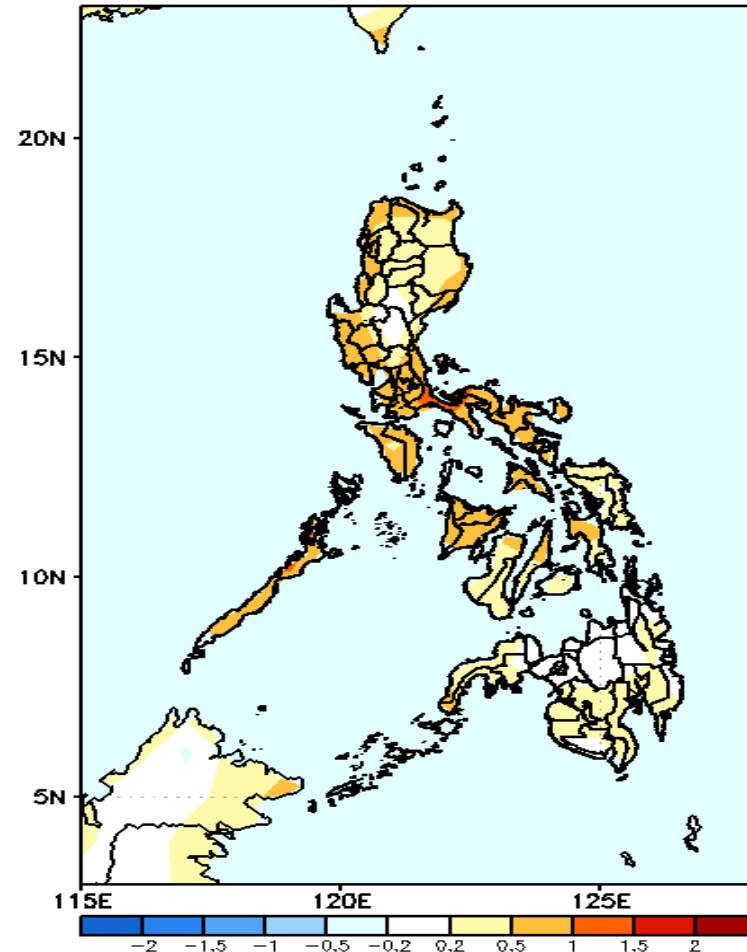
GEFS Week-1 T2m Anomaly
Valid: 20200611 - 20200617



2m Temperature Week 1: June 11-17, 2020

Average to slightly cooler than average surface air temperature will likely experience in Luzon while average to slightly warmer surface air temperature is expected in Visayas and Mindanao during the forecast period.

GEFS Week-2 T2m Anomaly
Valid: 20200618 - 20200624



2m Temperature Week 2: June 18-24, 2020

Average to slightly warmer than average surface air temperature will likely experience in most parts of the country during the forecast period.