



# Week 1 & Week 2 Forecast for the Philippines using GEFS Model



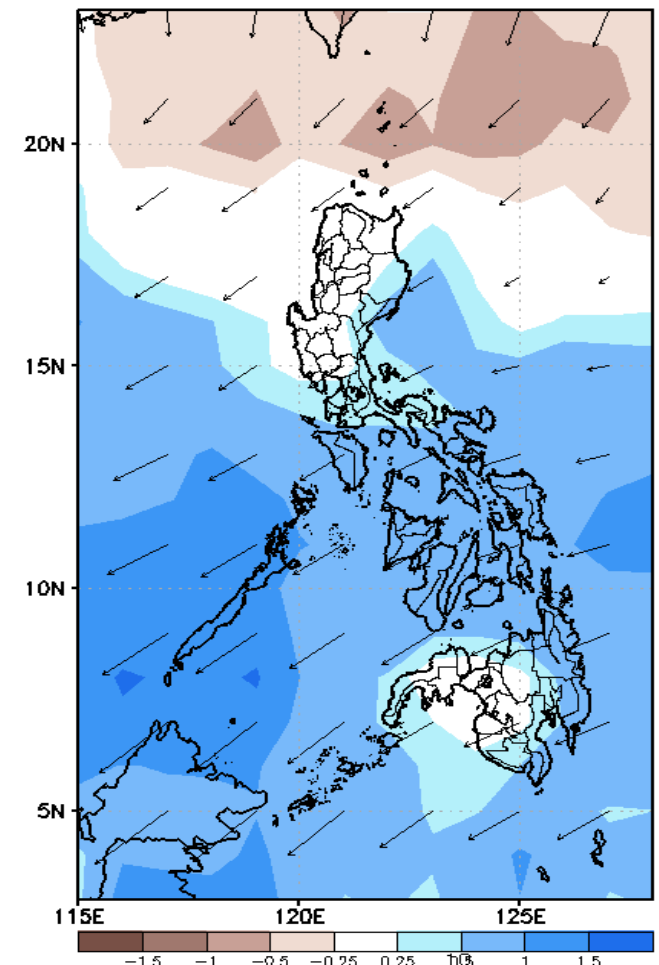
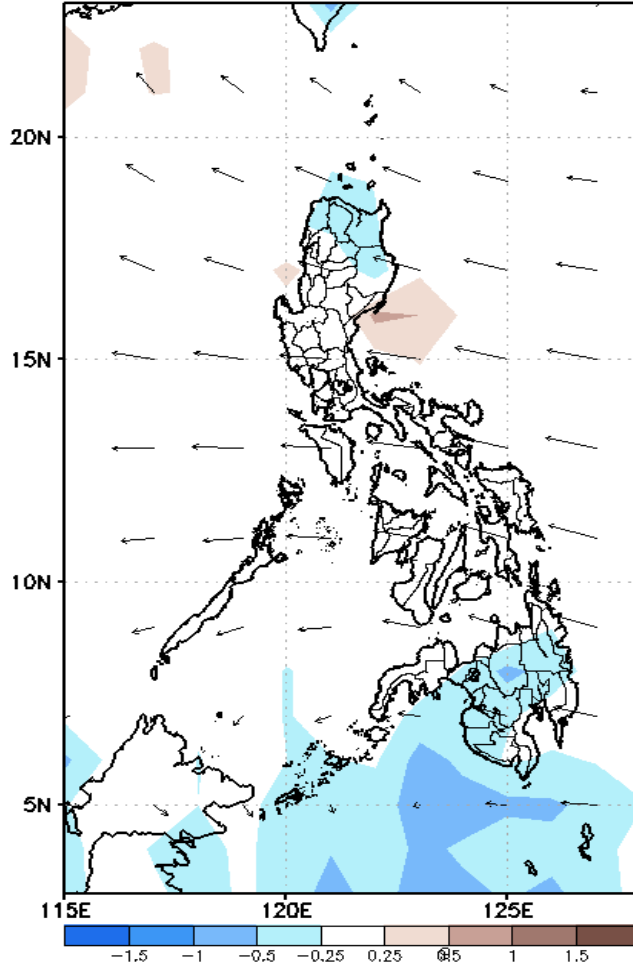
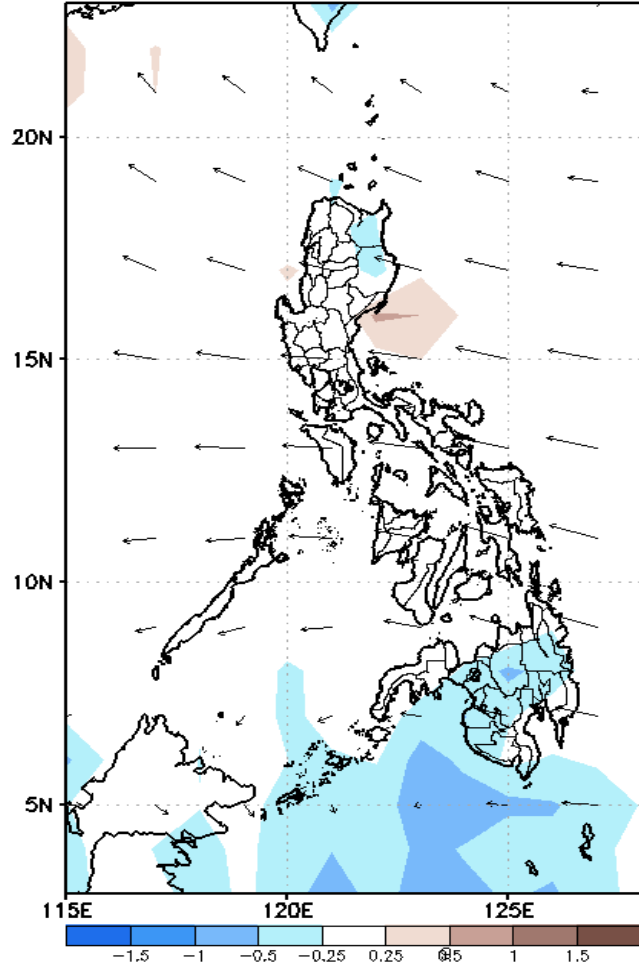
# GEFS Week-1 Forecasts: Divergence & Wind Anomaly

Week 1: Sep 14-20, 2020

GEFS Week-1 850-hPa Divergence and Wind Anom  
Valid: 20200914 - 20200920

GEFS Week-1 700-hPa Divergence and Wind Anom  
Valid: 20200914 - 20200920

GEFS Week-1 200-hPa Divergence and Wind Anom  
Valid: 20200914 - 20200920

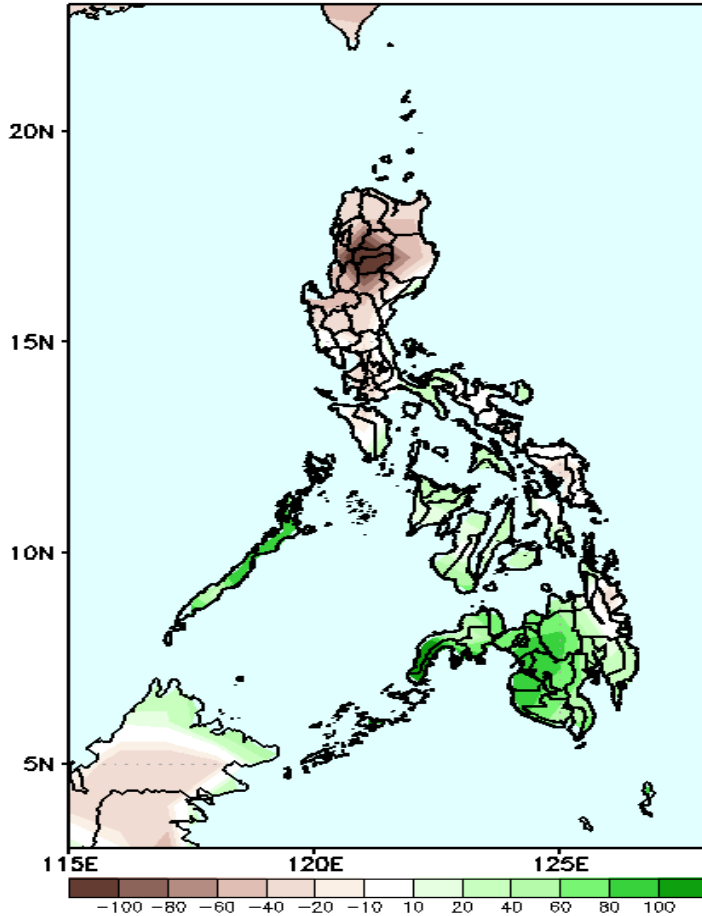


Upper level (200hPa) Divergence suggest likelihood of precipitation in NCR, CALABARZON. southern Luzon, central Visayas and Mindanao. Easterlies affecting most parts of the country during the forecast period.

# Precipitation Anomaly and Exceedance Probability > 25/50 mm

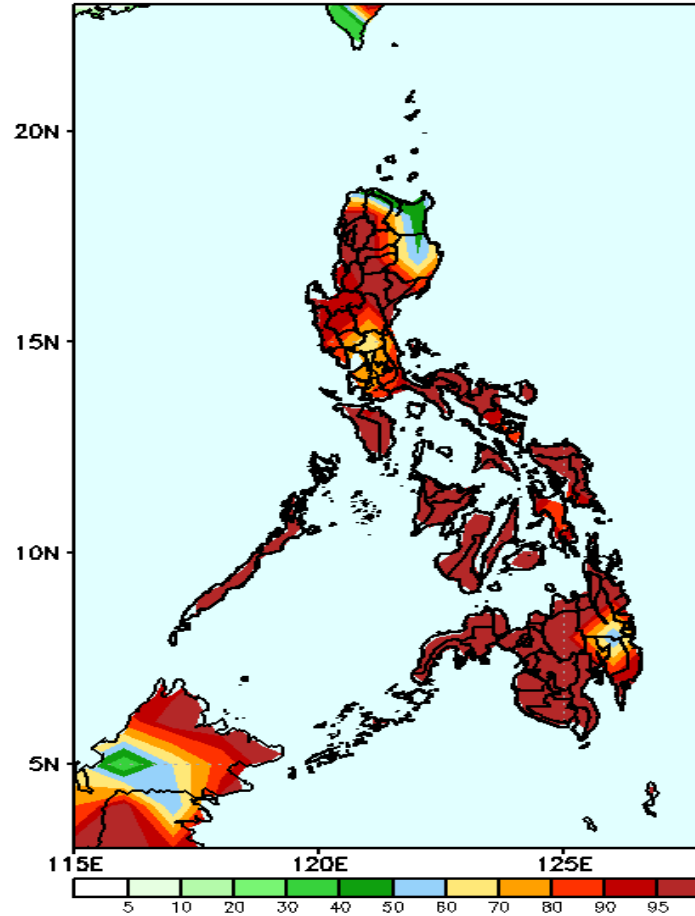
Week 1: Sep 14-20, 2020

GEFS Week-1 Precip Anomaly  
Valid: 20200914 - 20200920



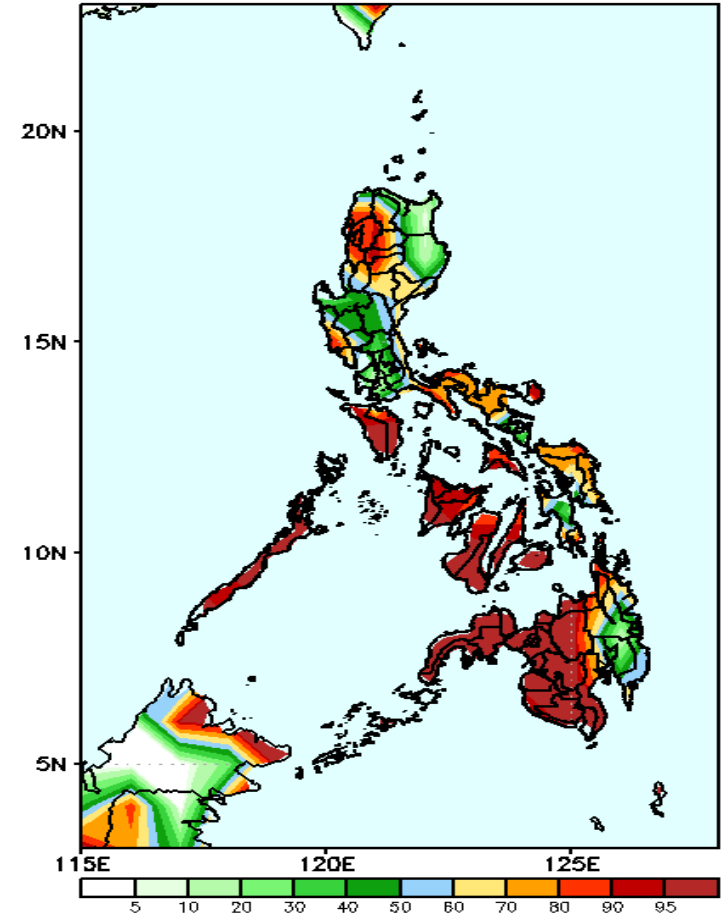
Rainfall deficit of 40-80mm in most parts of Luzon is expected while increase of rainfall of 50-100mm in Palawan & western Mindanao during the forecast period.

GEFS Week-1 Exceedance Prob. > 25mm  
Valid: 20200914 - 20200920



High probability of rainfall to exceed 25mm in most parts the country is expected except in Cagayan during the forecast period.

GEFS Week-1 Exceedance Prob. > 50mm  
Valid: 20200914 - 20200920

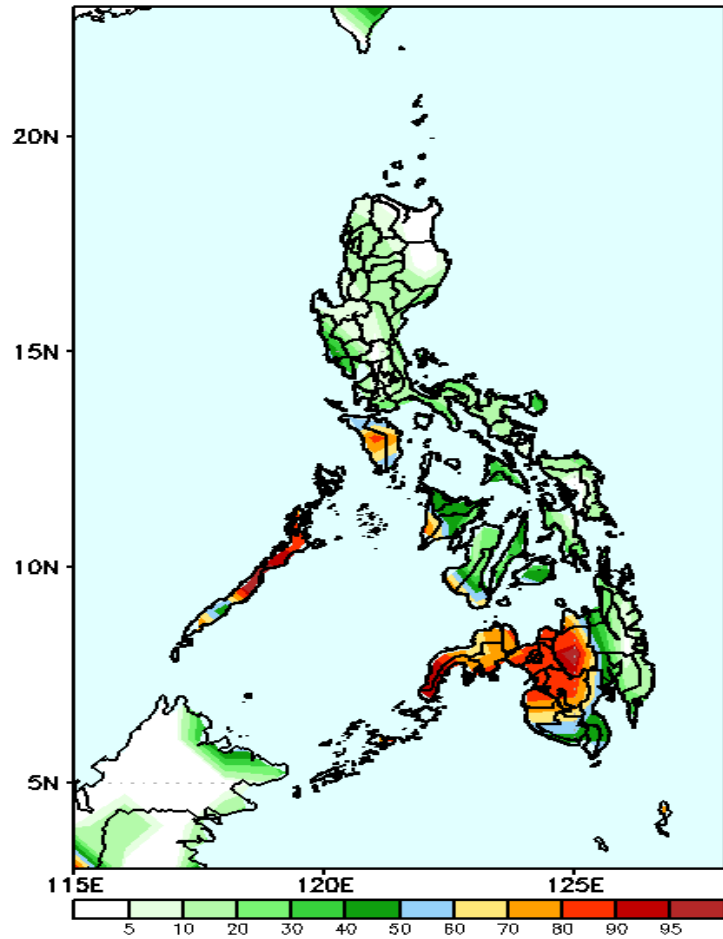


High probability of rainfall to exceed 50mm in Cordillera Region, Ilocos Norte & Sur, Mindoro, Palawan and most parts of Visayas & Mindanao while less likely for the rest of Luzon and Davao Region during the forecast period.

# Exceedance Probability > 100/150/200 mm

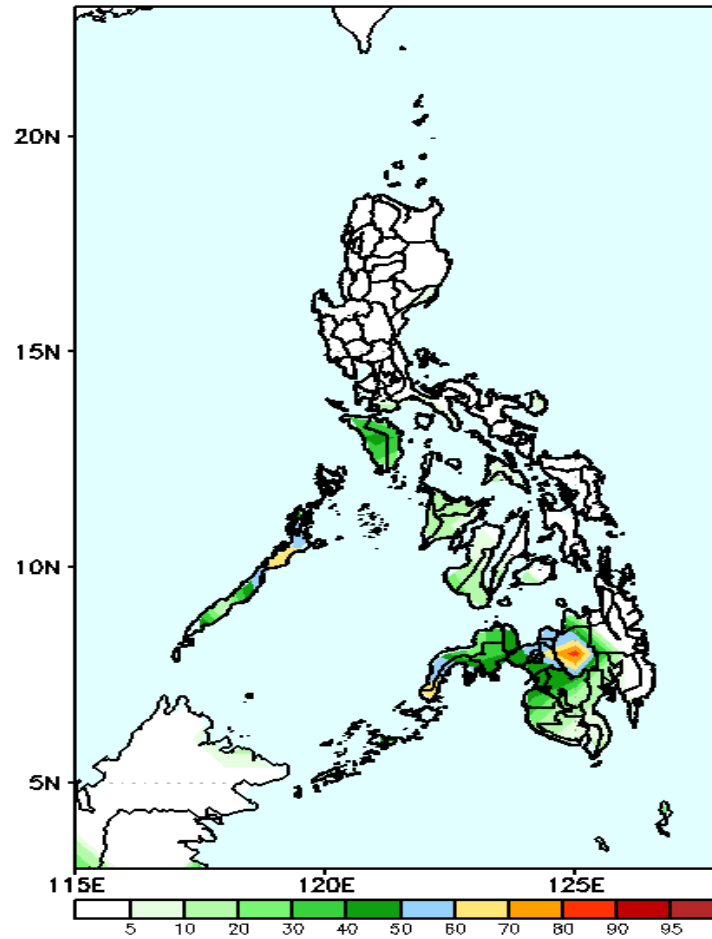
## Week 1: Sep 14-20, 2020

GEFS Week-1 Exceedance Prob. > 100mm  
Valid: 20200914 - 20200920



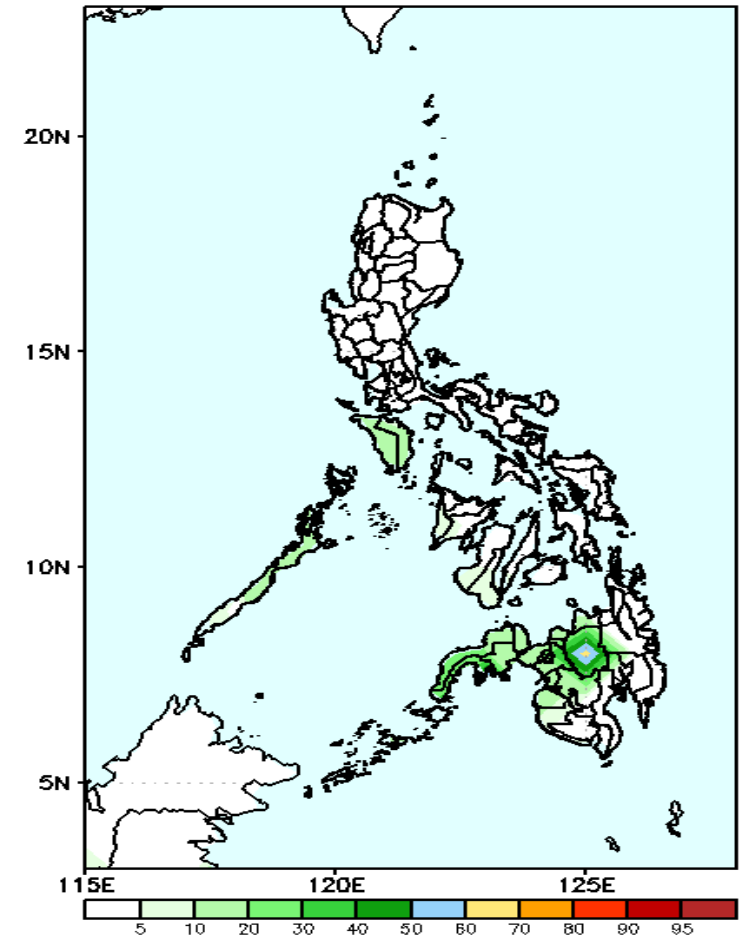
High probability of rainfall to exceed 100mm in Mindoro, Palawan and western parts of Mindanao is expected while less likely for the rest of the country during the forecast period.

GEFS Week-1 Exceedance Prob. > 150mm  
Valid: 20200914 - 20200920



50-95% probability of rainfall to exceed 100mm in Bukidnon is expected while less likely for the rest of the country during the forecast period.

GEFS Week-1 Exceedance Prob. > 200mm  
Valid: 20200914 - 20200920



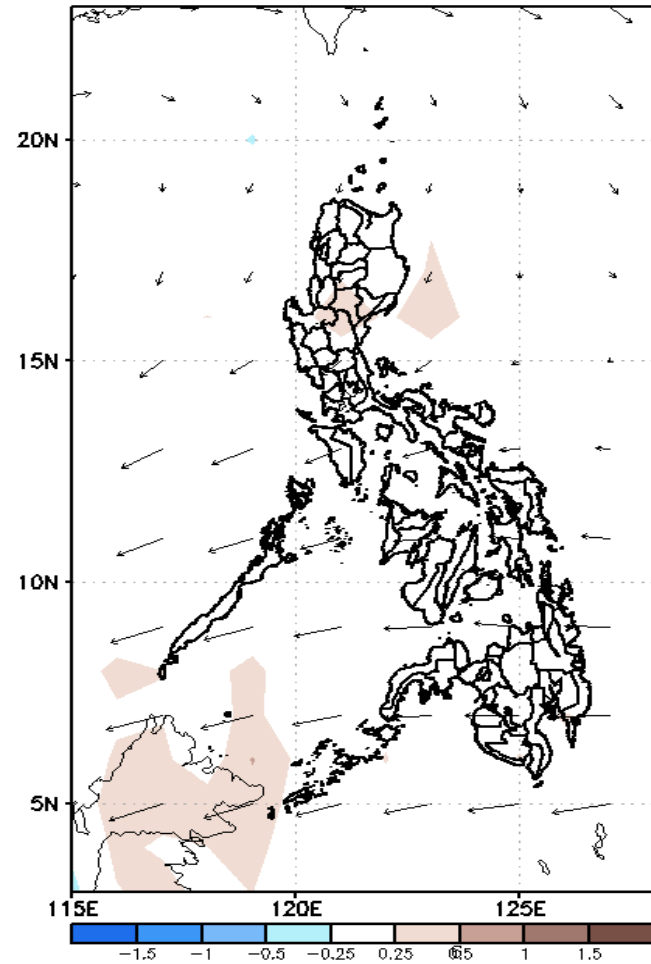
Less probability of rainfall to exceed 200mm in most parts of the country during the forecast period.



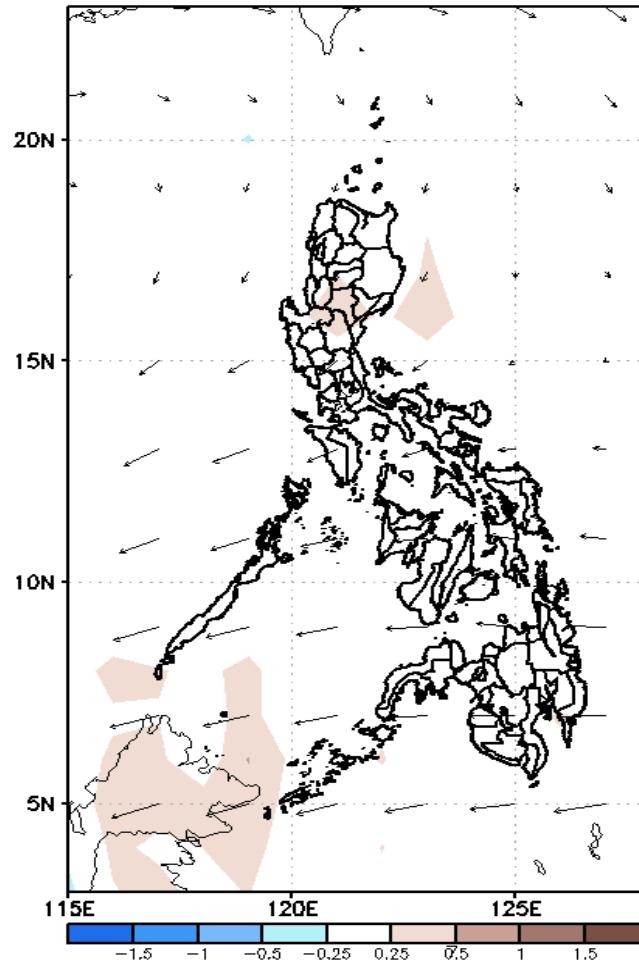
# GEFS Week-2 Forecasts: Divergence & Wind Anomaly

## Week 2: Sep 21-27, 2020

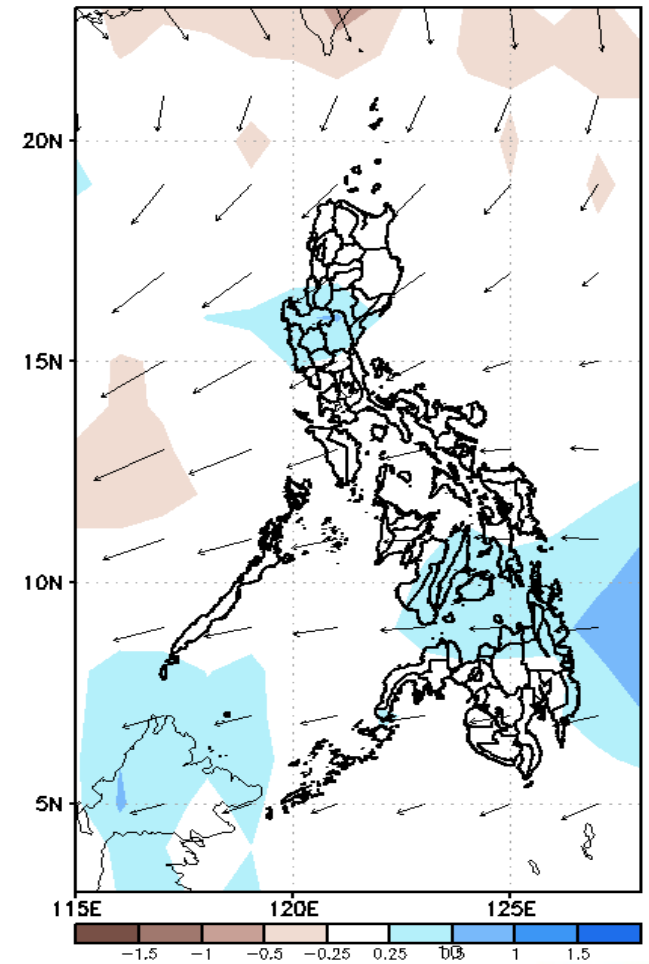
GEFS Week-2 850-hPa Divergence and Wind Anom  
Valid: 20200921 - 20200927



GEFS Week-2 700-hPa Divergence and Wind Anom  
Valid: 20200921 - 20200927



GEFS week-2 200-hPa Divergence and Wind Anom  
Valid: 20200921 - 20200927

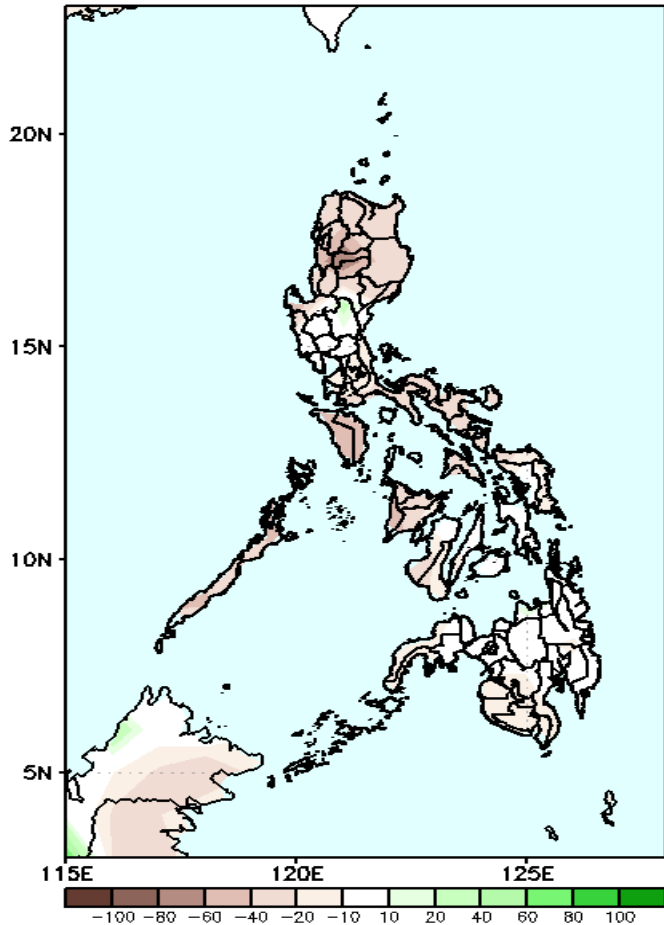


Upper level (200hPa) Divergence suggest likelihood of precipitation in central Luzon, Leyte provinces central Visayas and northern Mindanao & CARAGA. Easterlies affecting most parts of the country during the forecast period.

# Precipitation Anomaly and Exceedance Probability > 25/50 mm

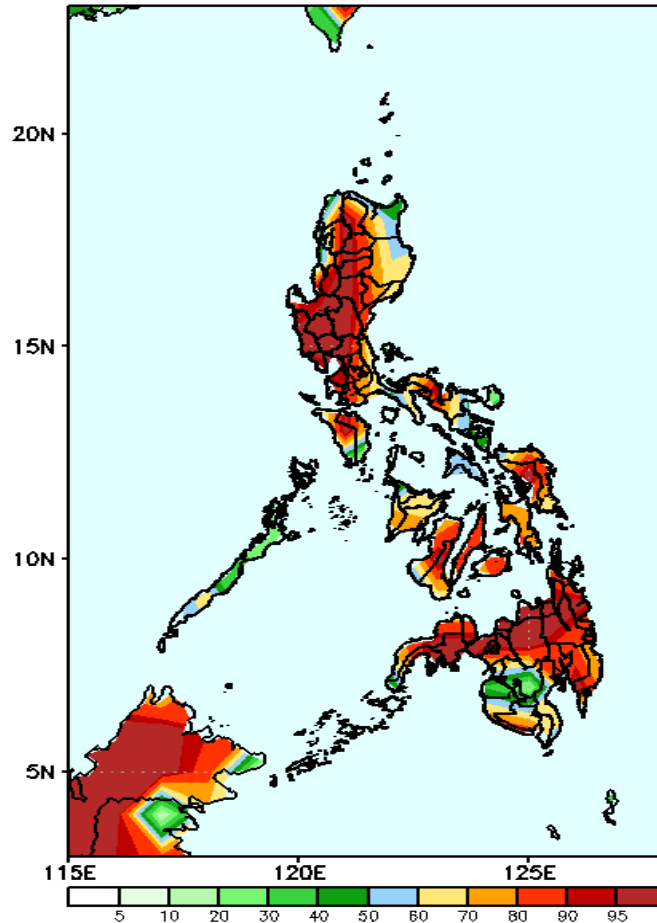
## Week 2: Sep 21-27, 2020

GEFS Week-2 Precip Anomaly  
Valid: 20200921 - 20200927



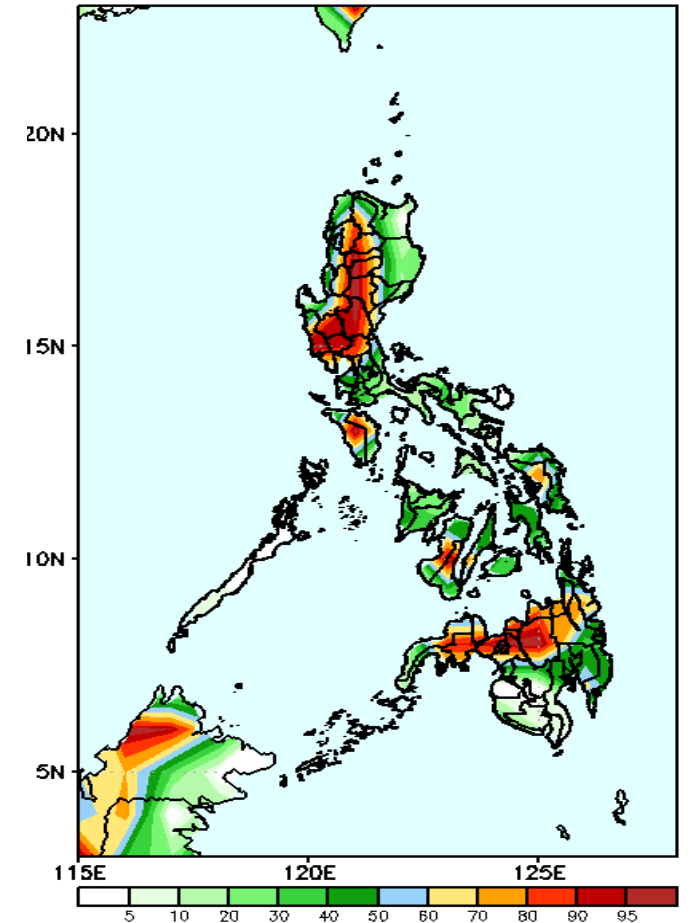
Rainfall deficit of 40-60mm in most parts of northern half of Luzon and Visayas is expected during the forecast period.

GEFS Week-2 Exceedance Prob. > 25mm  
Valid: 20200921 - 20200927



High probability of rainfall to exceed 25mm in most parts of the country is expected during the forecast period.

GEFS Week-2 Exceedance Prob. > 50mm  
Valid: 20200921 - 20200927



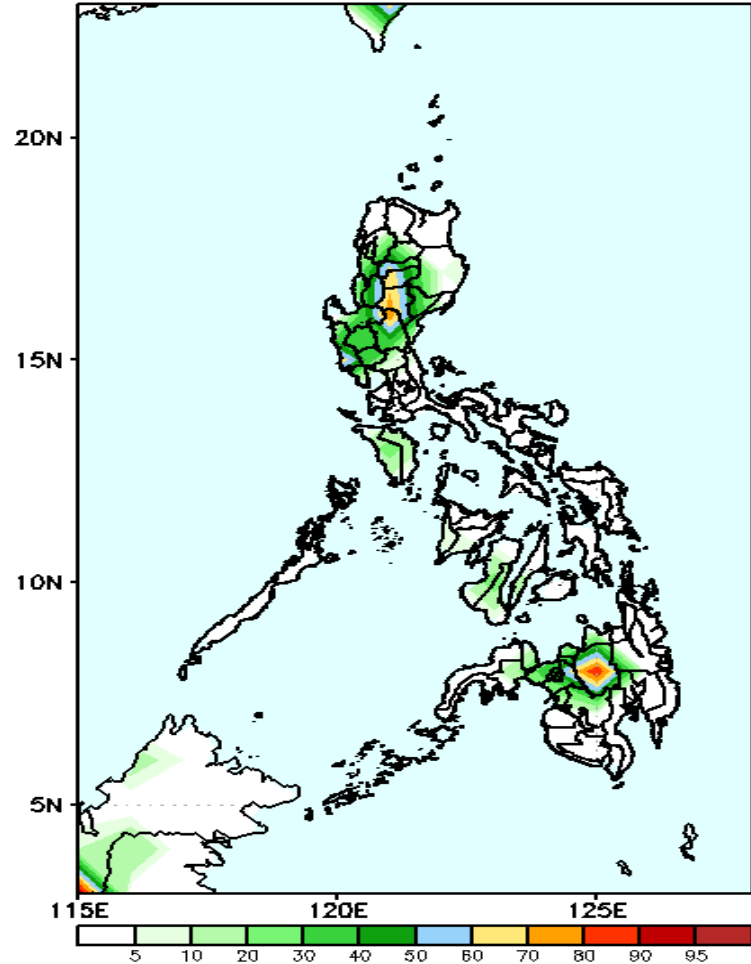
High probability of rainfall to exceed 50mm in most parts of western & southern Luzon, Mindoro and northern parts of Mindanao is expected while less likely for the rest of the country during the forecast period.



# Exceedance Probability > 100/150/200 mm

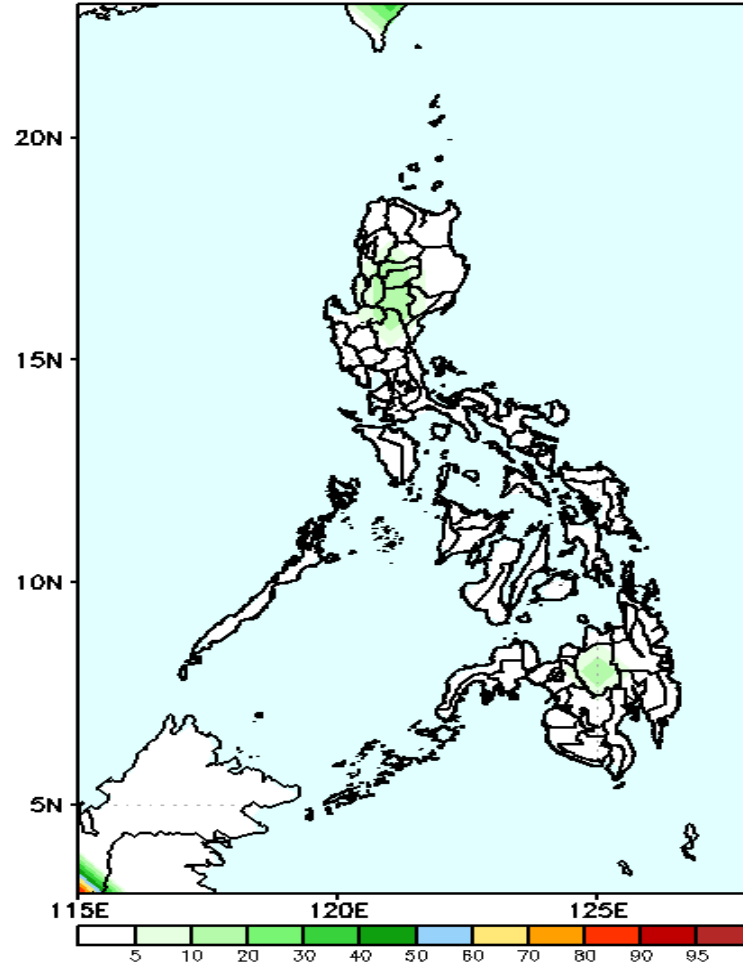
## Week 2: Sep 21-27, 2020

GEFS Week-2 Exceedance Prob. > 100mm  
Valid: 20200921 - 20200927



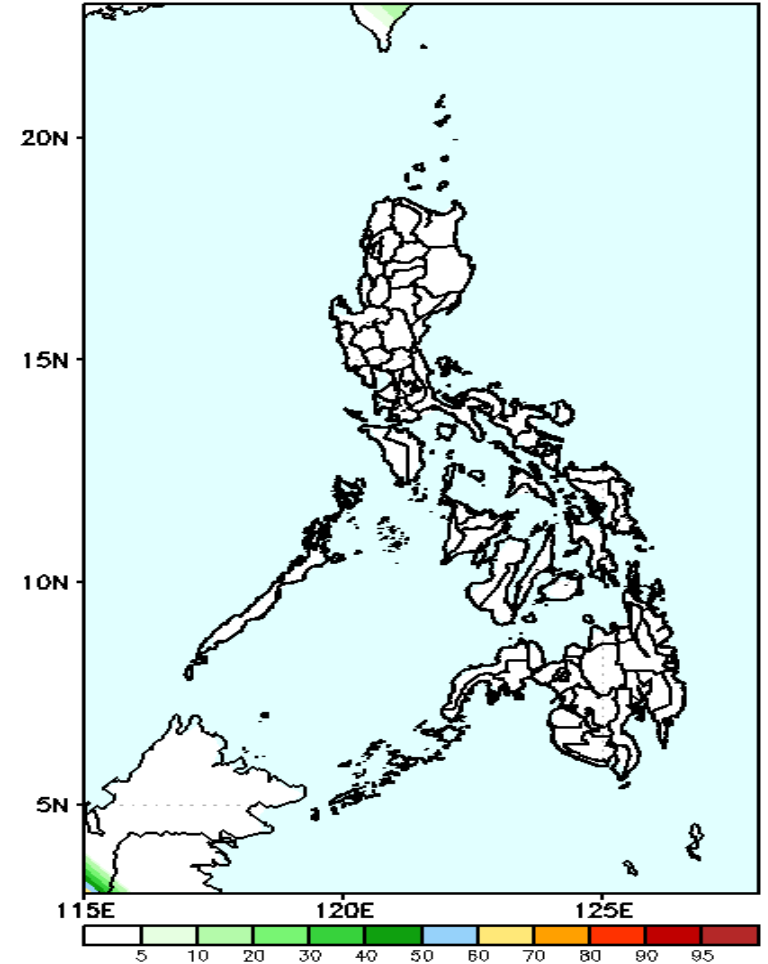
60-85% probability of rainfall to exceed 100mm in Kalinga, Mt. Province, Ifugao & Bukidnon while less likely for the rest of the country during the forecast period.

GEFS Week-2 Exceedance Prob. > 150mm  
Valid: 20200921 - 20200927



Less probability of rainfall to exceed 150mm in most parts of the country during the forecast period.

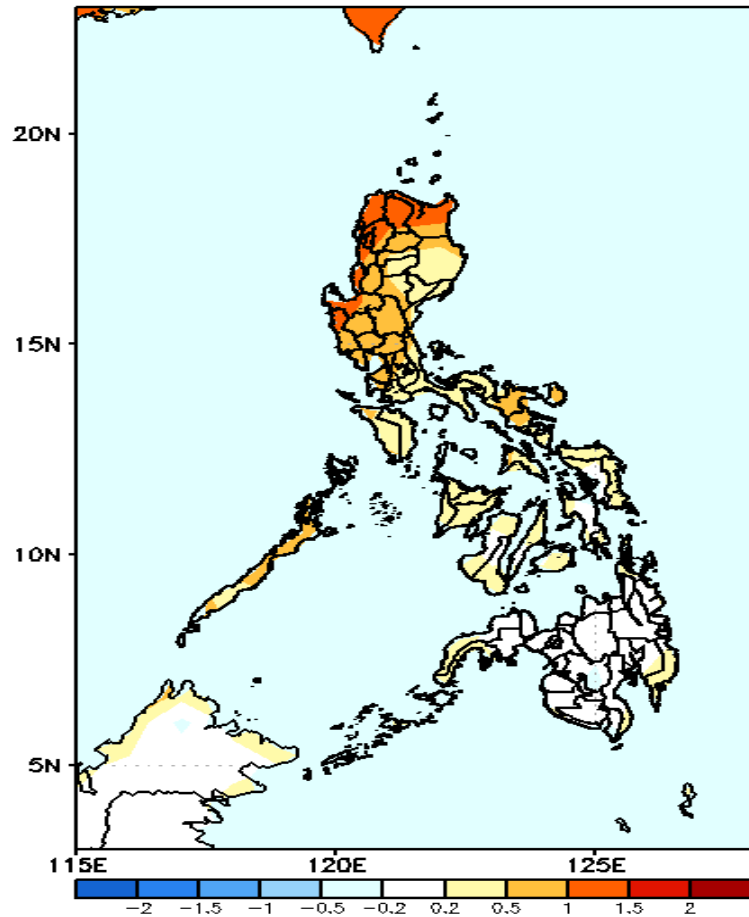
GEFS Week-2 Exceedance Prob. > 200mm  
Valid: 20200921 - 20200927



Less probability of rainfall to exceed 200mm in most parts of the country during the forecast period.

# GEFS Week-1 & 2 Forecasts: T2m Anomaly

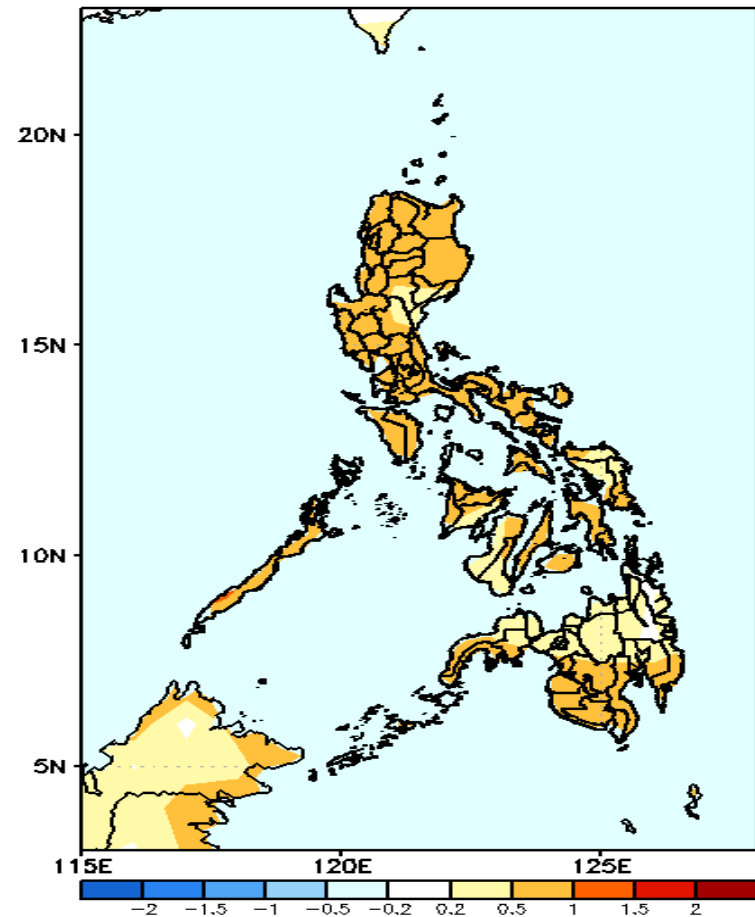
GEFS Week-1 T2m Anomaly  
Valid: 20200914 - 20200920



**2m Temperature Week 1: Sep 14-20, 2020**

Warmer than average surface air temperature will likely experience in northern Luzon while average to slightly warmer for the rest of the country during the forecast period.

GEFS Week-2 T2m Anomaly  
Valid: 20200921 - 20200927



**2m Temperature Week 2: Sep 21-27, 2020**

Slightly warmer than average surface air temperature will likely experience in most parts of the country during the forecast period.