



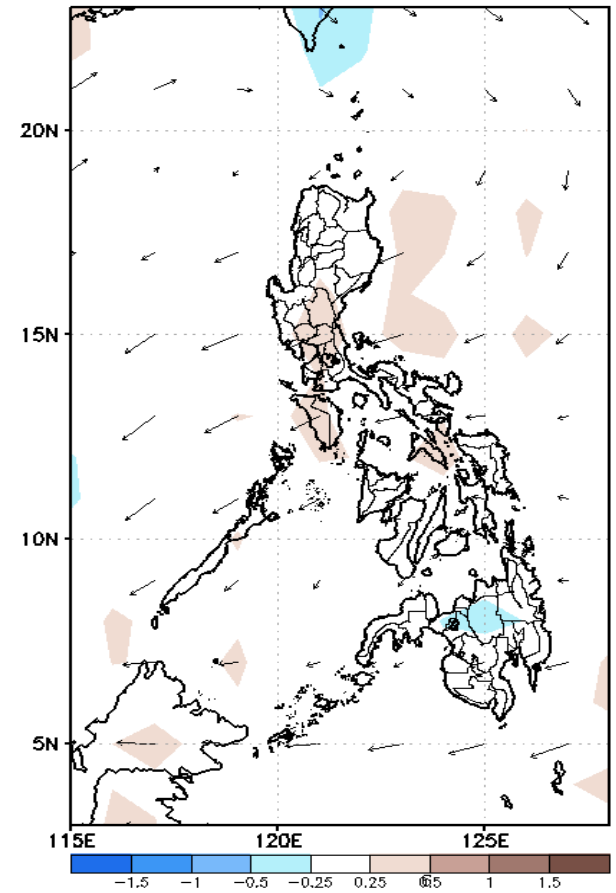
Week 1 & Week 2 Forecast for the Philippines using GEFS Model



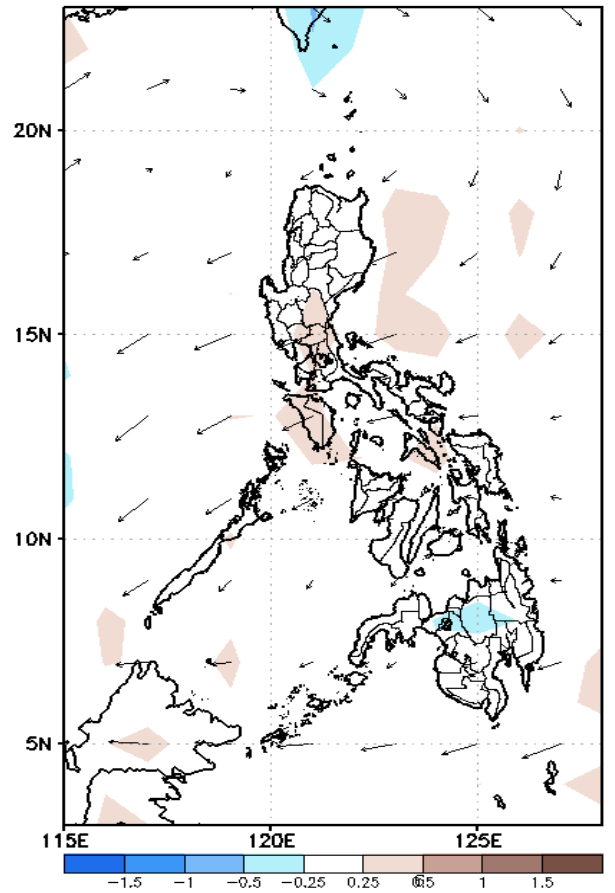
GEFS Week-1 Forecasts: Divergence & Wind Anomaly

Week 1: June 15-21, 2020

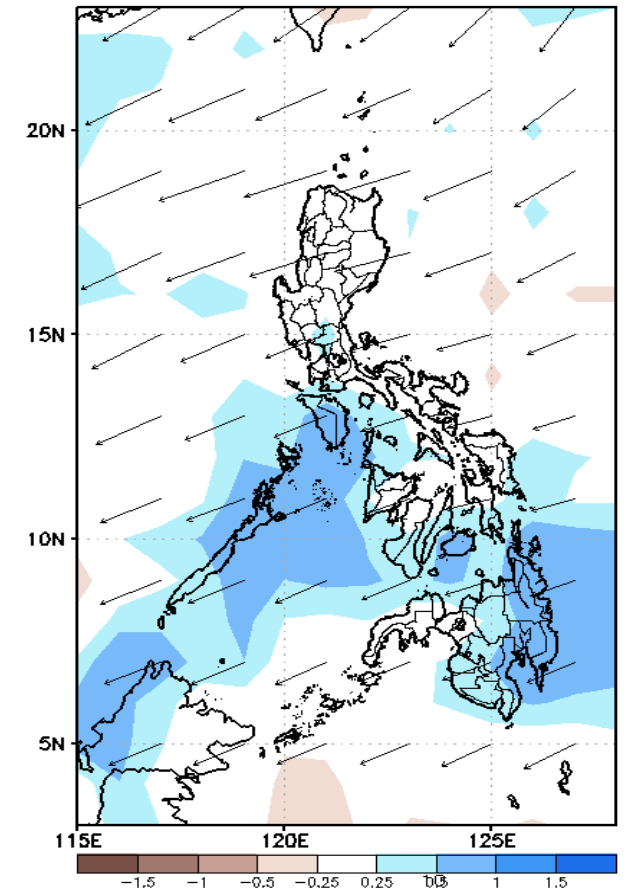
GEFS Week-1 850-hPa Divergence and Wind Anom
Valid: 20200615 - 20200621



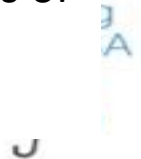
GEFS Week-1 700-hPa Divergence and Wind Anom
Valid: 20200615 - 20200621



GEFS Week-1 200-hPa Divergence and Wind Anom
Valid: 20200615 - 20200621



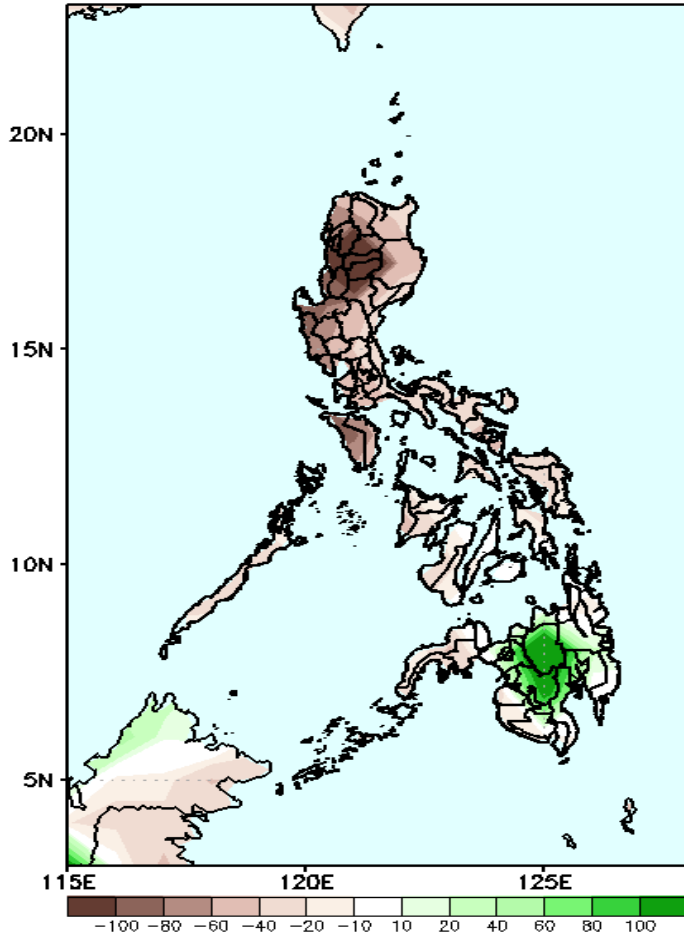
Upper level (200 hPa) Divergence suggest likelihood of precipitation in western and central Visayas and most parts of Mindanao. Easterlies affecting most parts of the country during the forecast period.



Precipitation Anomaly and Exceedance Probability > 25/50 mm

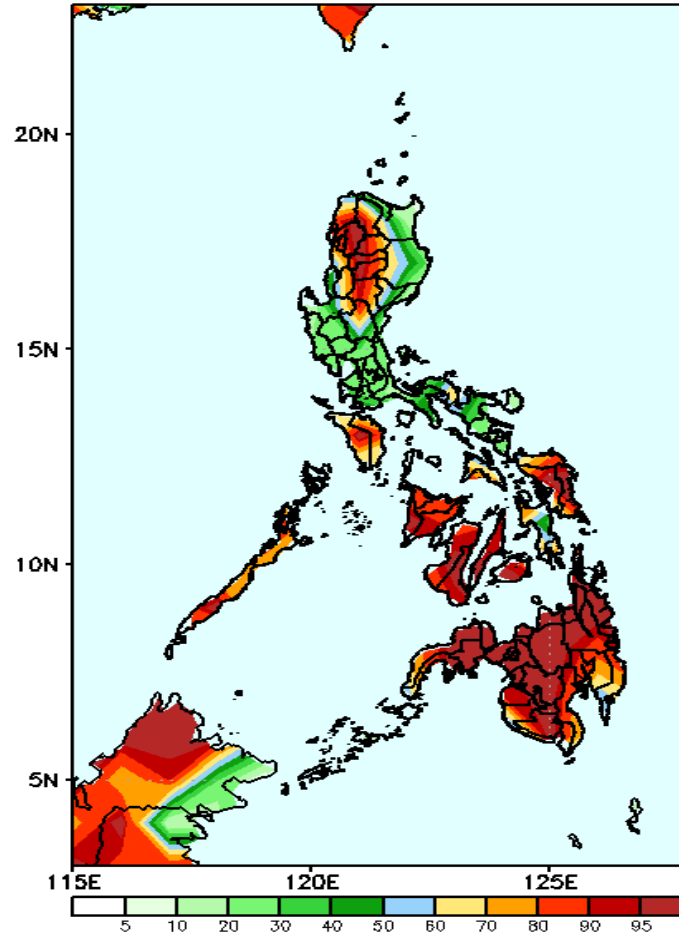
Week 1: June 15-21, 2020

GEFS Week-1 Precip Anomaly
Valid: 20200615 - 20200621



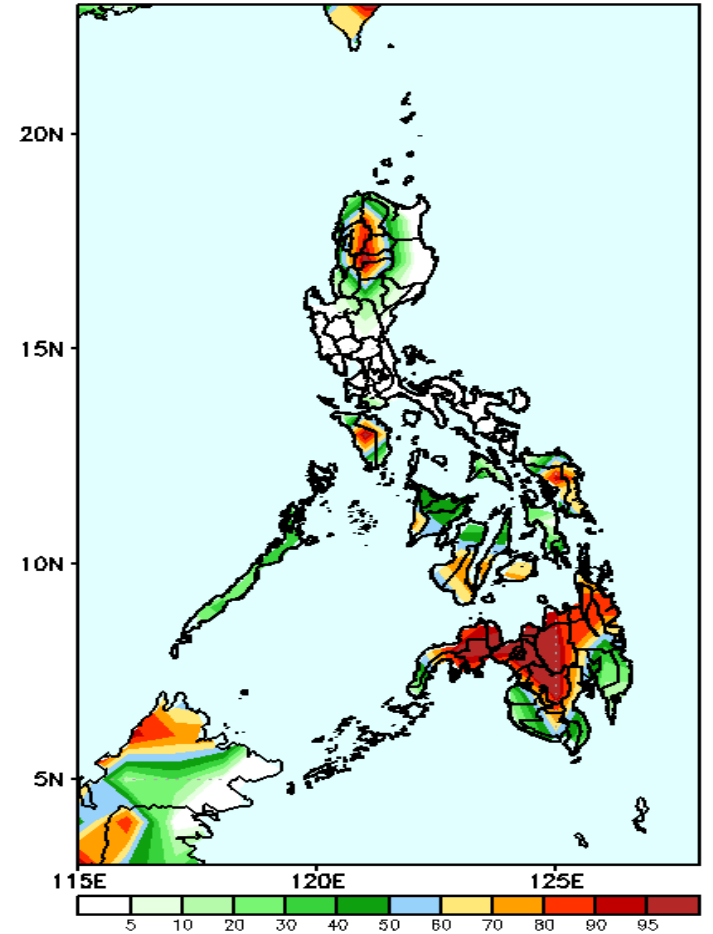
Rainfall deficit of 40-100mm is expected in Luzon and Visayas while up to 100mm increase of rainfall in Mindanao during the forecast period.

GEFS Week-1 Exceedance Prob. > 25mm
Valid: 20200615 - 20200621



High probability of rainfall to exceed 25mm in Ilocos Region, CAR, Mindoro and most parts of Visayas and Mindanao while less likely for the rest of Luzon during the forecast period.

GEFS Week-1 Exceedance Prob. > 50mm
Valid: 20200615 - 20200621



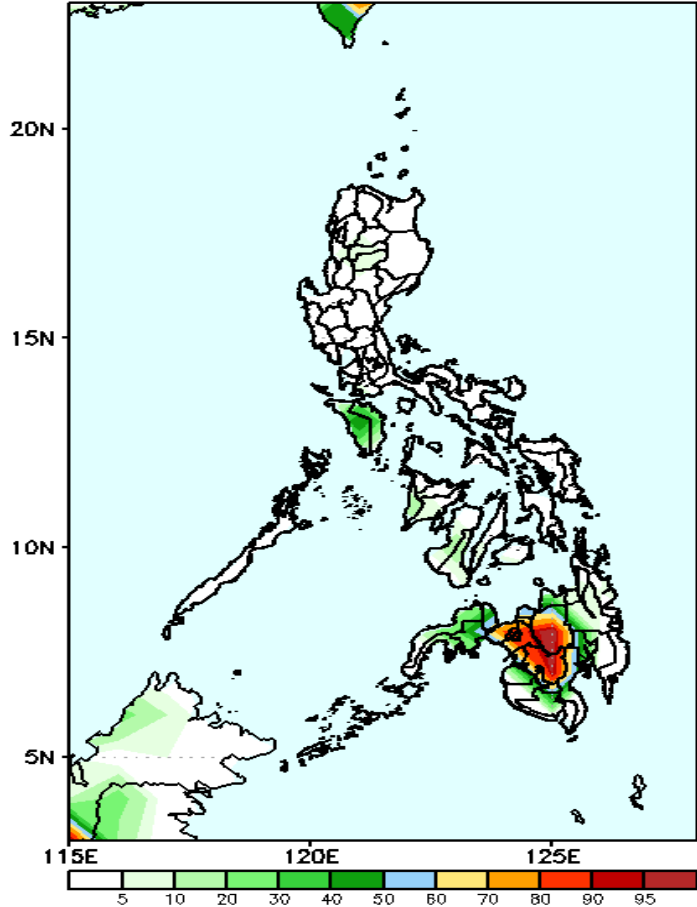
High probability of rainfall to exceed 50mm in CAR, Mindoro, Central Visayas, Samar provinces and in most parts of Mindanao (except southern parts) while less likely for the rest of the country during the forecast period.



Exceedance Probability > 100/150/200 mm

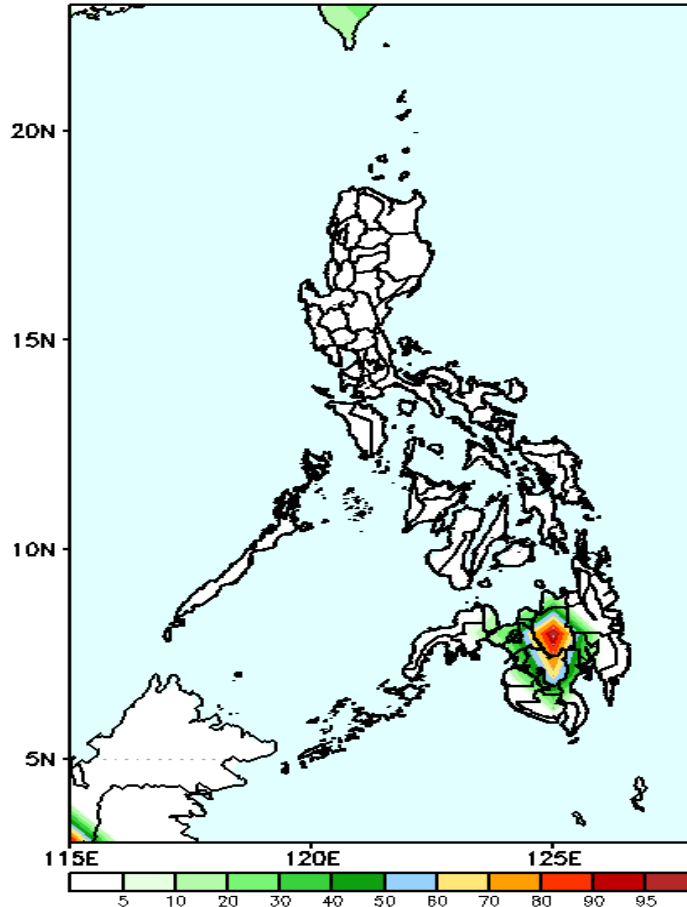
Week 1: June 15-21, 2020

GEFS Week-1 Exceedance Prob. > 100mm
Valid: 20200615 - 20200621



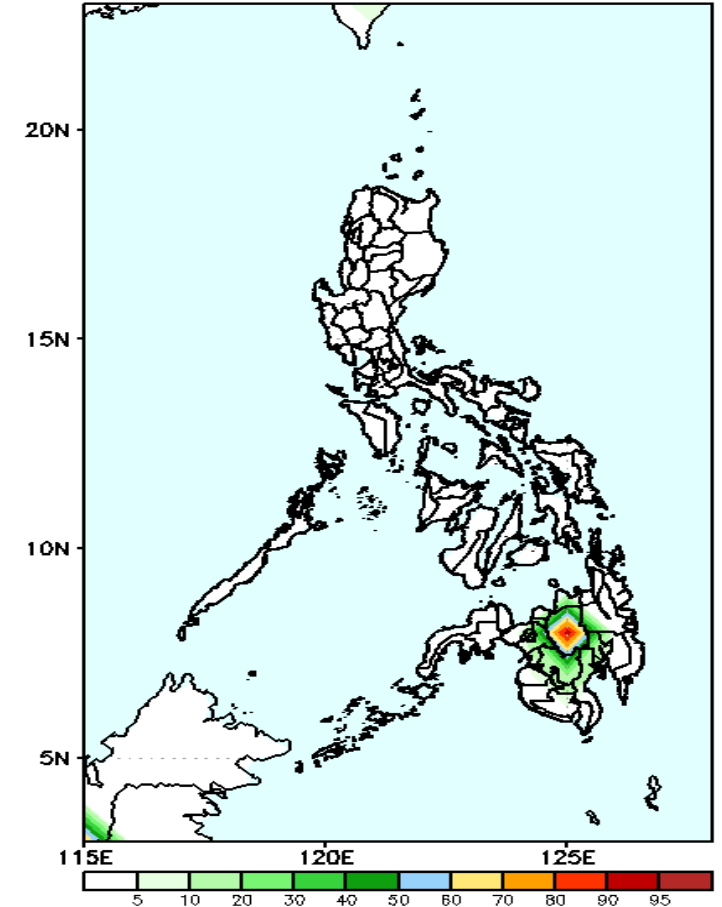
High probability of rainfall to exceed 100mm in northern Mindanao and North Cotabato while less likely for the rest of the country during the forecast period.

GEFS Week-1 Exceedance Prob. > 150mm
Valid: 20200615 - 20200621



High probability of rainfall to exceed 100mm in Bukidnon while less likely for the rest of the country during the forecast period.

GEFS Week-1 Exceedance Prob. > 200mm
Valid: 20200615 - 20200621

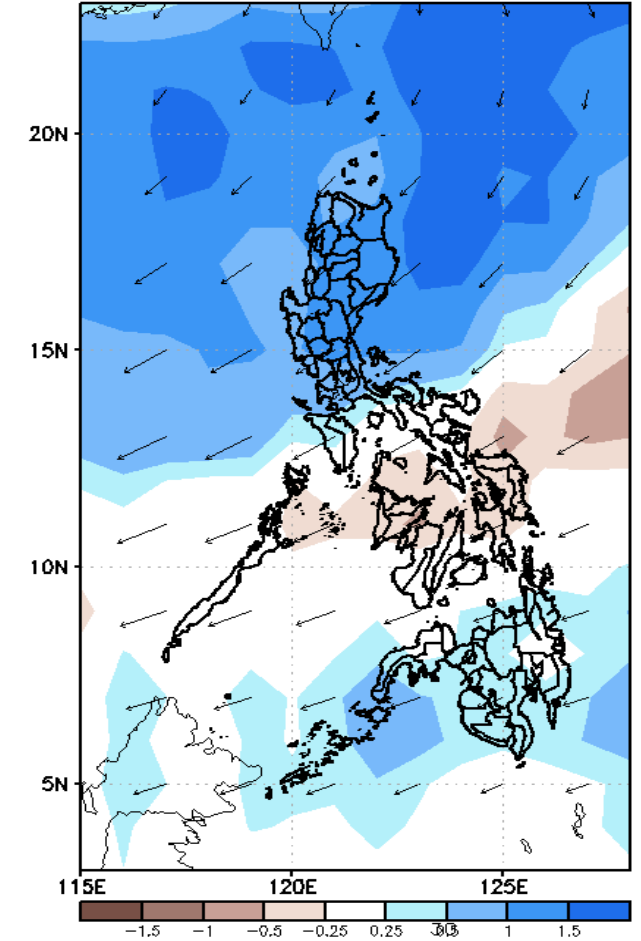
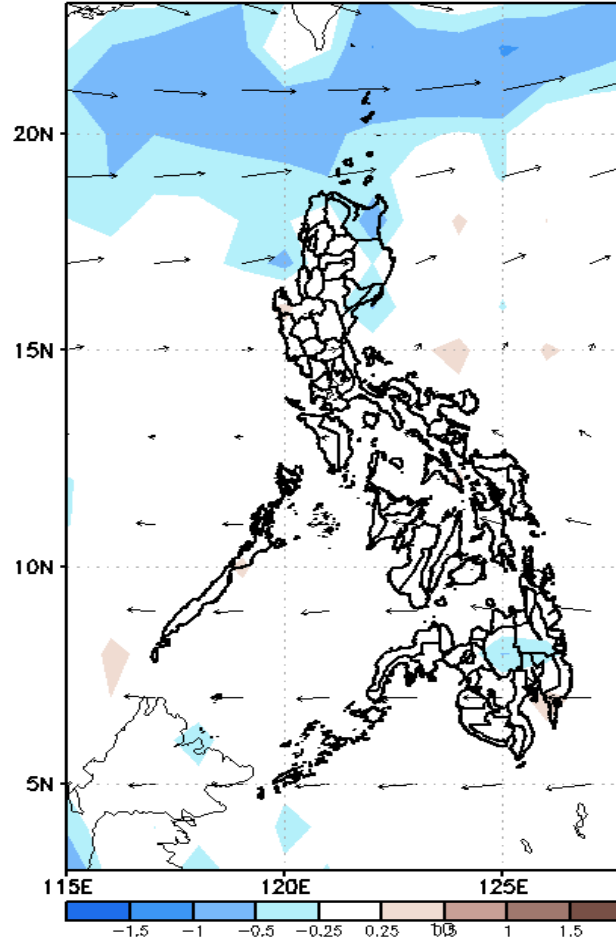
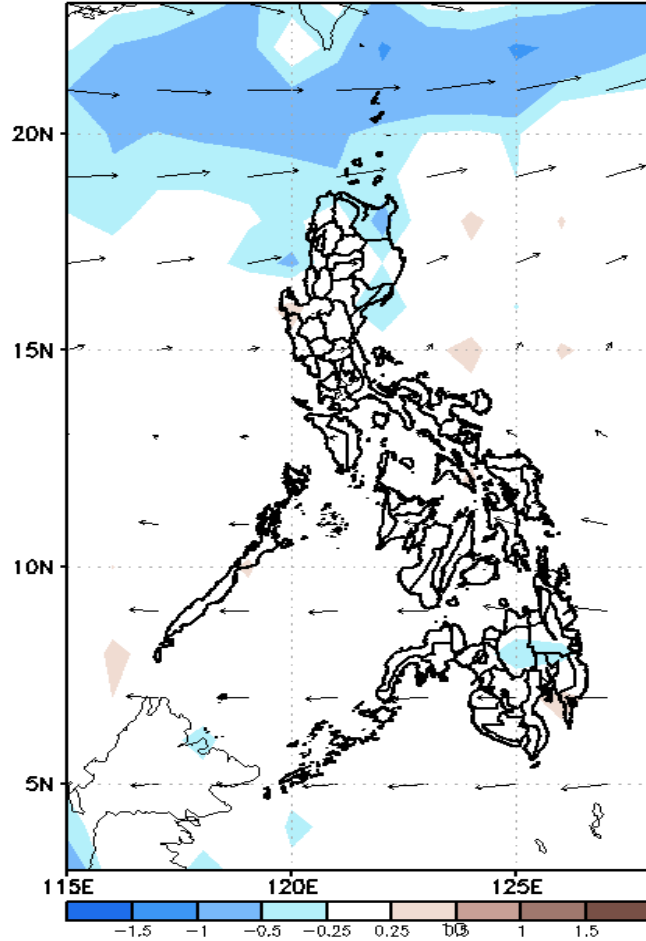


High probability of rainfall to exceed 200mm in Bukidnon while less likely for the rest of the country during the forecast period.

GEFS Week-2 Forecasts: Divergence & Wind Anomaly

Week 2: June 22-28, 2020

GEFS Week-2 850-hPa Divergence and Wind Anom GEFS Week-2 700-hPa Divergence and Wind Anom GEFS week-2 200-hPa Divergence and Wind Anom
Valid: 20200622 - 20200628



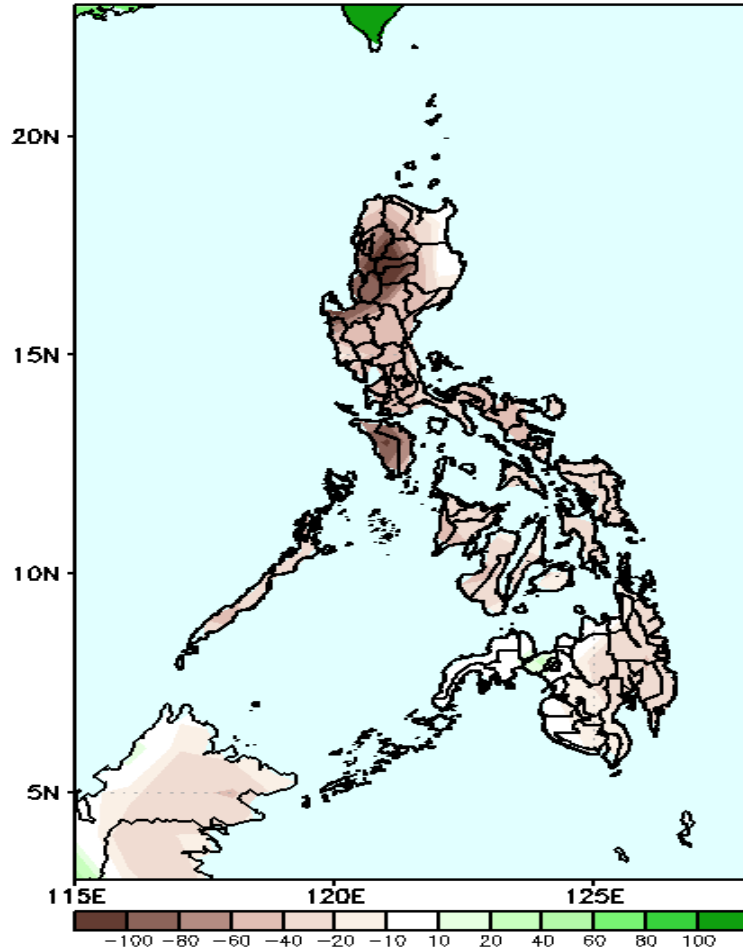
Upper level (200 hPa) Divergence suggest likelihood of precipitation in most parts of Luzon and Mindanao. Southwest Monsoon affecting most parts of Luzon while easterlies affecting Visayas and Mindanao during the forecast period.



Precipitation Anomaly and Exceedance Probability > 25/50 mm

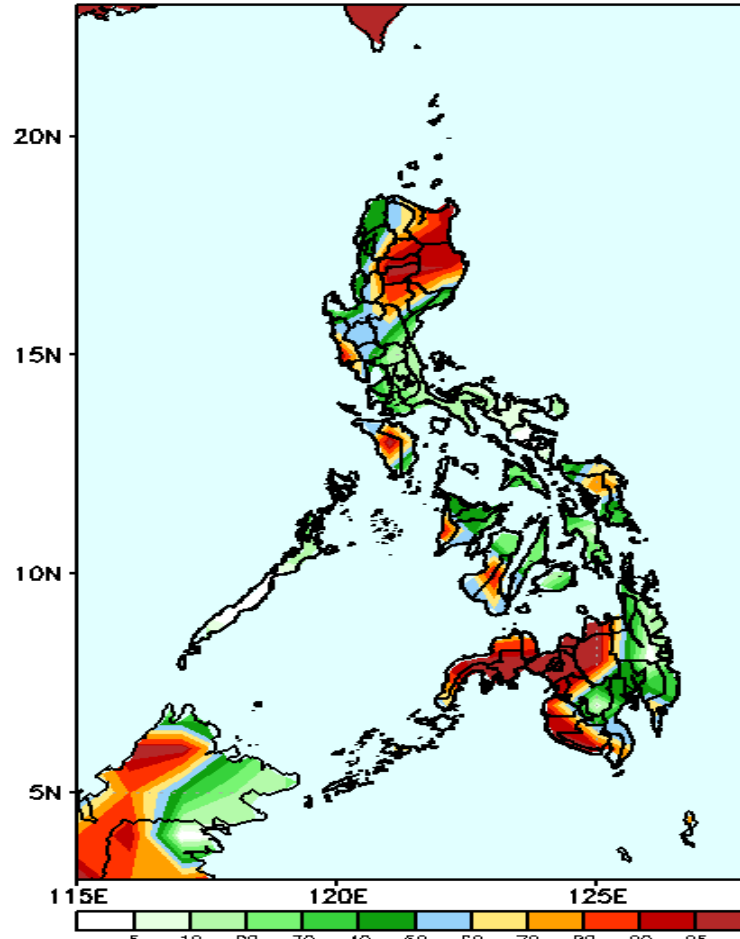
Week 2: June 22-28, 2020

GEFS Week-2 Precip Anomaly
Valid: 20200622 - 20200628



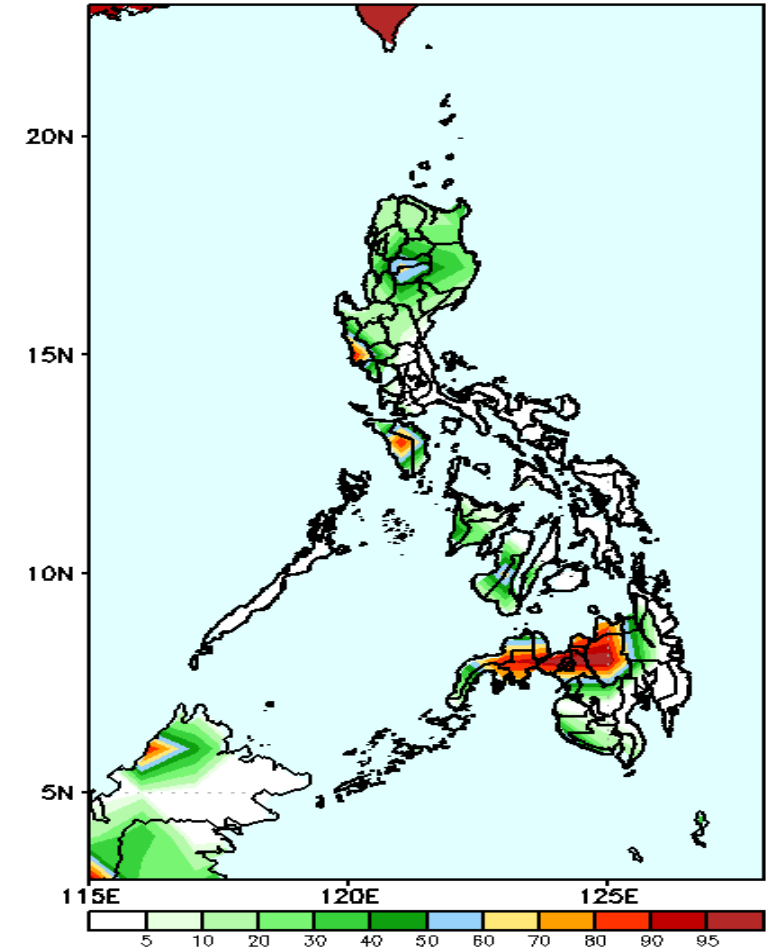
Rainfall deficit of up to 100mm is expected in Luzon while up to 40mm rainfall deficit for the rest of the country during the forecast period.

GEFS Week-2 Exceedance Prob. > 25mm
Valid: 20200622 - 20200628



High probability of rainfall to exceed 25mm in Cagayan Valley, CAR. Mindoro, Zambales, western Visayas, and in northern and western parts of Mindanao while less likely for the rest of the country during the forecast period.

GEFS Week-2 Exceedance Prob. > 50mm
Valid: 20200622 - 20200628

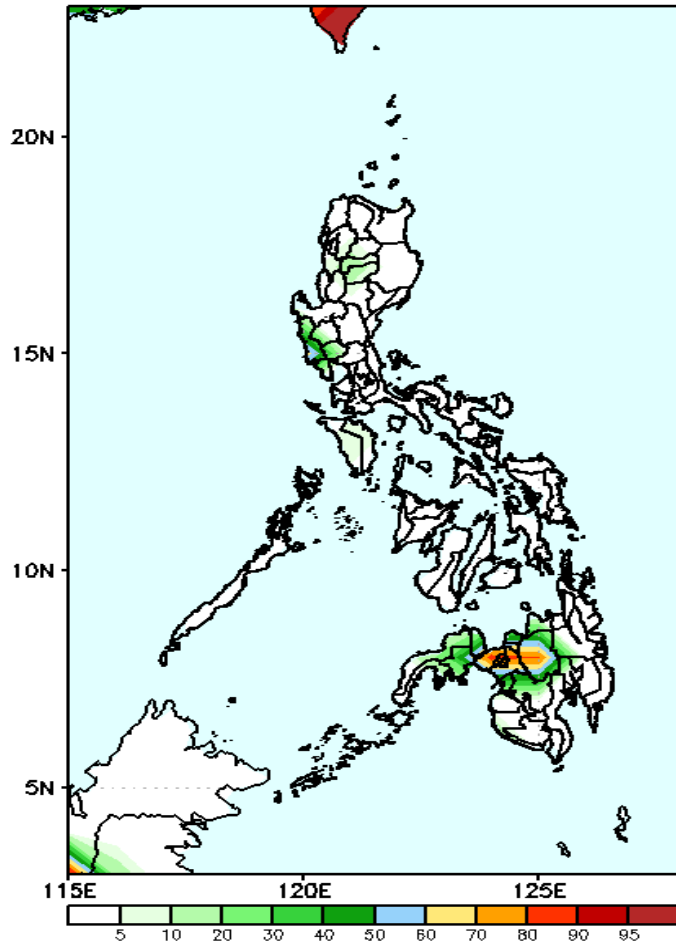


High probability of rainfall to exceed 50mm in Zambales, Occ. Mindoro, northern Mindanao and Zamboanga Peninsula while less likely for the rest of the country during the forecast period.

Exceedance Probability > 100/150/200 mm

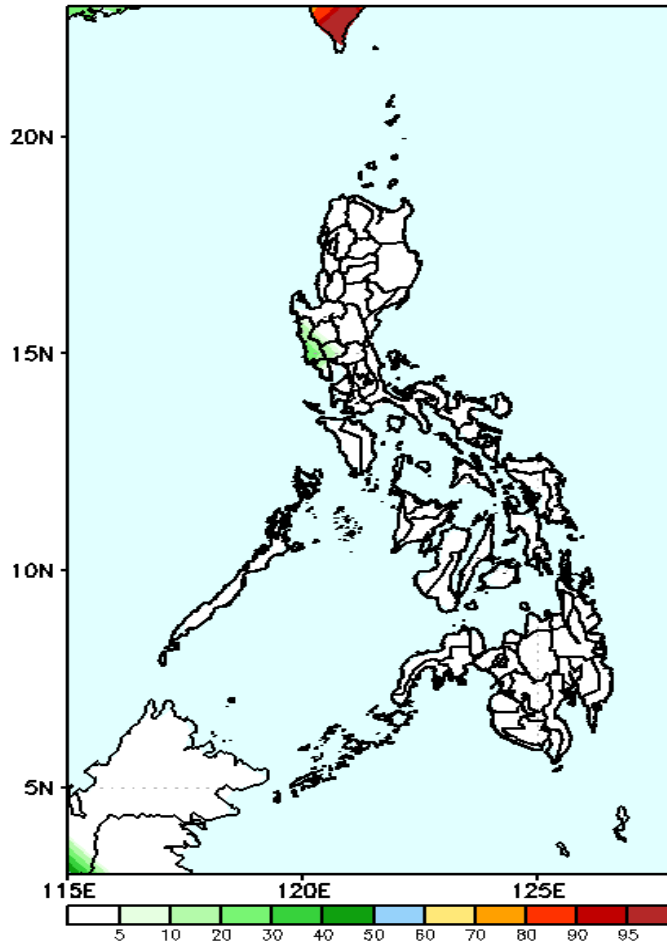
Week 2: June 22-28, 2020

GEFS Week-2 Exceedance Prob. > 100mm
Valid: 20200622 - 20200628



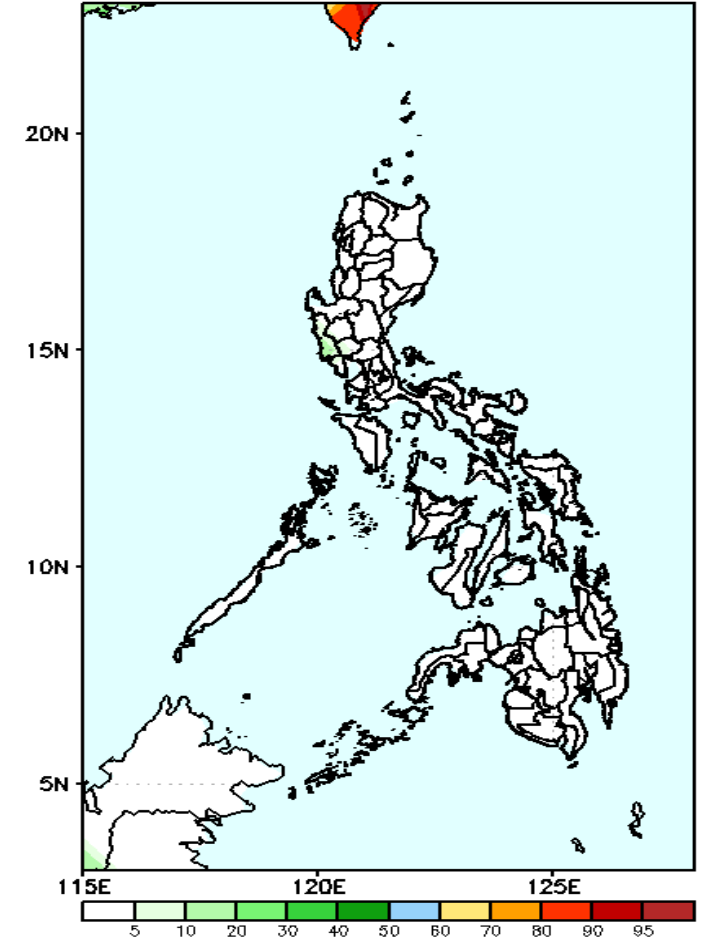
60-90% probability of rainfall to exceed 100mm in Zambales and northern Mindanao while less likely for the rest of the country during the forecast period.

GEFS Week-2 Exceedance Prob. > 150mm
Valid: 20200622 - 20200628



Less probability of rainfall to exceed 150mm in most parts of the country during the forecast period.

GEFS Week-2 Exceedance Prob. > 200mm
Valid: 20200622 - 20200628

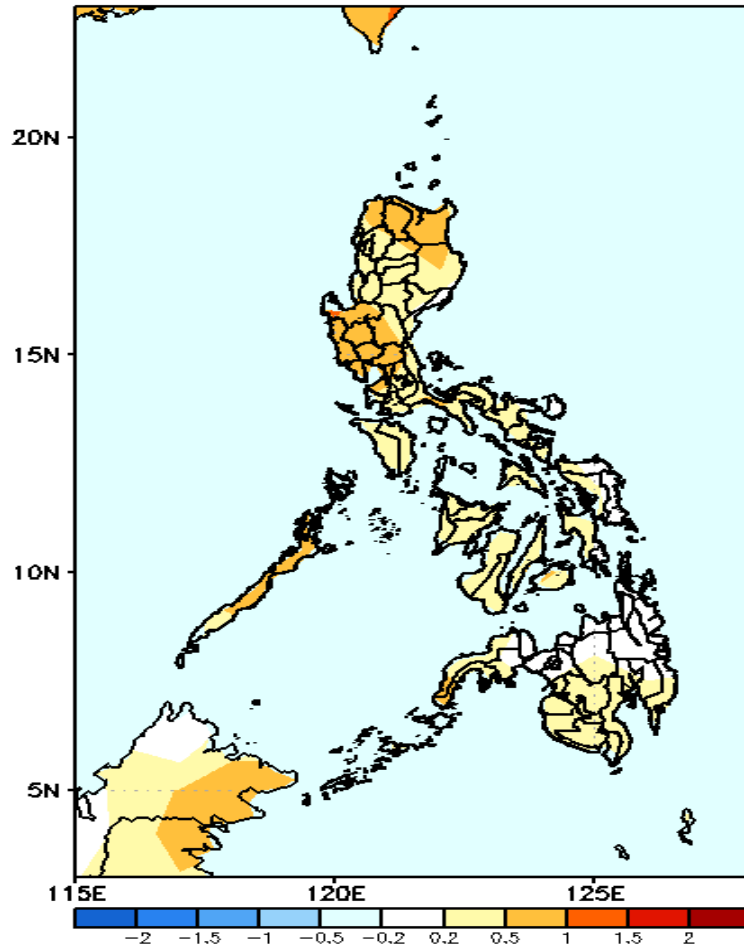


Less probability of rainfall to exceed 200mm in most parts of the country during the forecast period.



GEFS Week-1 & 2 Forecasts: T2m Anomaly

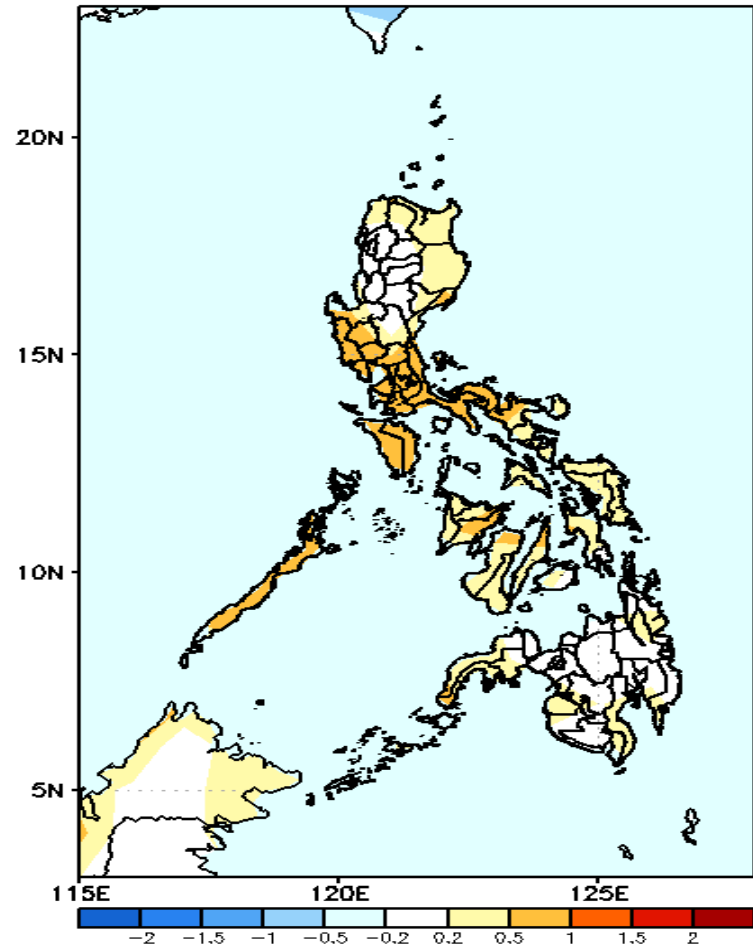
GEFS Week-1 T2m Anomaly
Valid: 20200615 - 20200621



2m Temperature Week 1: June 15-21, 2020

Average to slightly warmer than average surface air temperature will likely experience in most parts of the country during the forecast period.

GEFS Week-2 T2m Anomaly
Valid: 20200622 - 20200628



2m Temperature Week 2: June 22-28, 2020

Average to slightly warmer than average surface air temperature will likely experience in most parts of the country during the forecast period.