



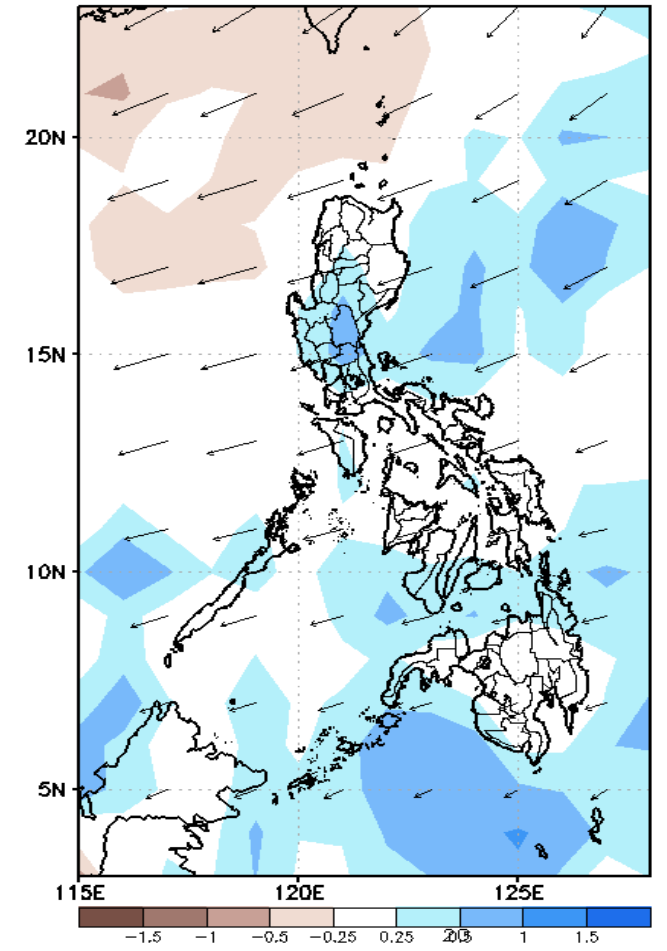
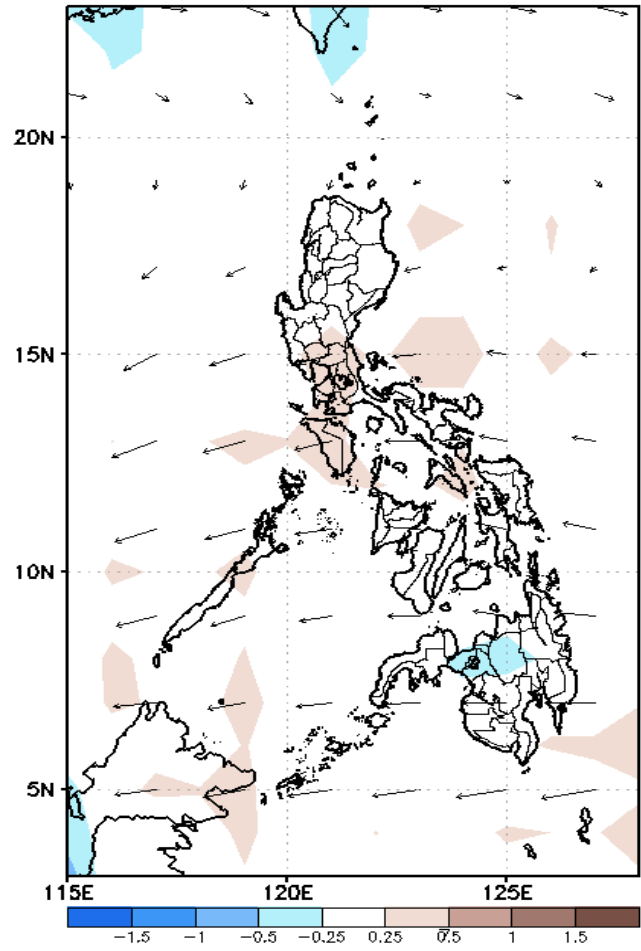
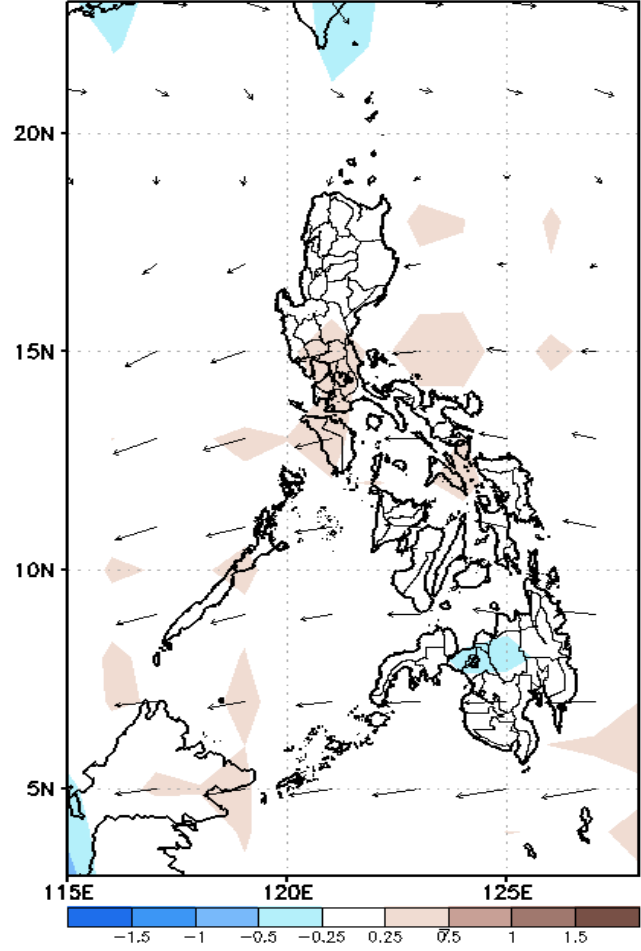
# Week 1 & Week 2 Forecast for the Philippines using GEFS Model



# GEFS Week-1 Forecasts: Divergence & Wind Anomaly

Week 1: June 18-24, 2020

GEFS Week-1 850-hPa Divergence and Wind Anom GEFS Week-1 700-hPa Divergence and Wind Anom GEFS Week-1 200-hPa Divergence and Wind Anom  
Valid: 20200618 - 20200624



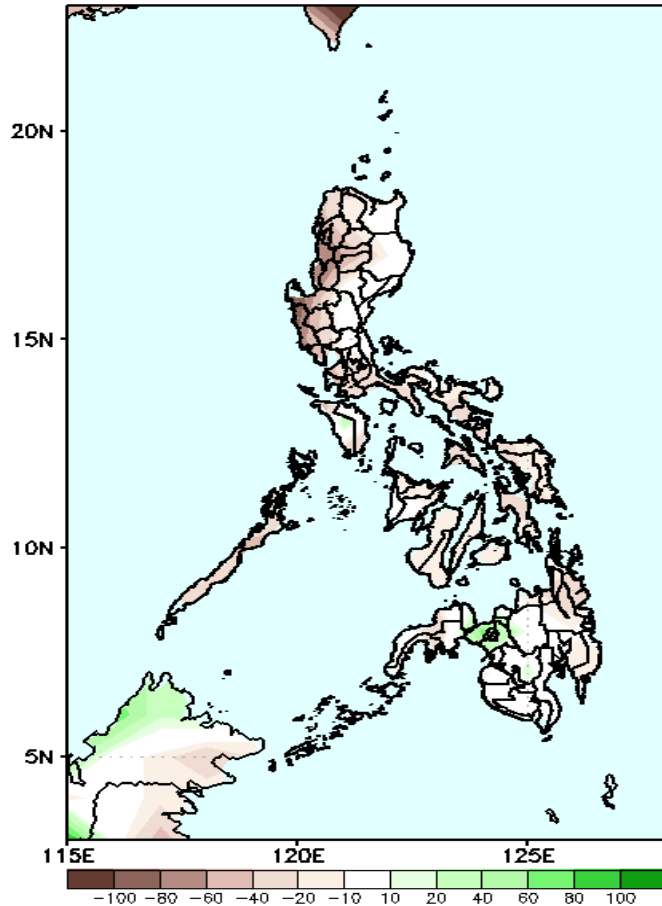
Upper level (200 hPa) Divergence suggest likelihood of precipitation in Central Luzon, CALABARZON, southern parts of Visayas and most parts of Mindanao. Easterlies affecting most parts of the country during the forecast period.



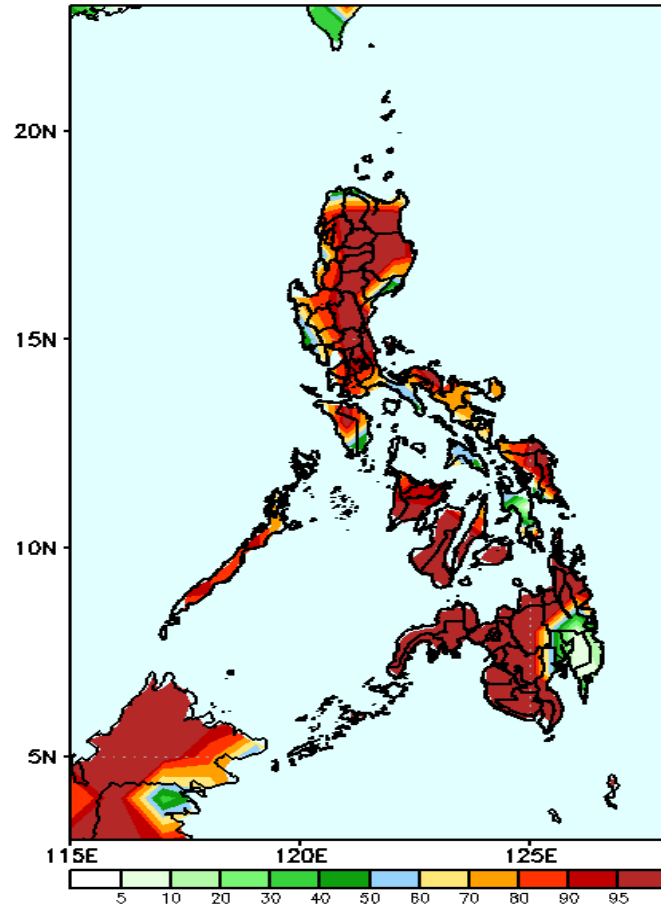
# Precipitation Anomaly and Exceedance Probability > 25/50 mm

Week 1: June 18-24, 2020

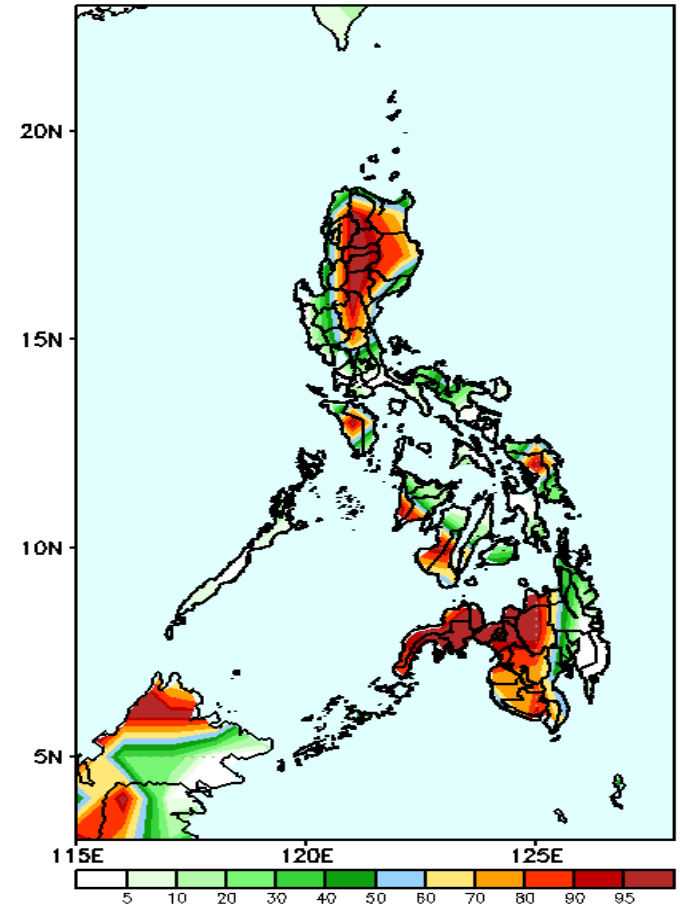
GEFS Week-1 Precip Anomaly  
Valid: 20200618 - 20200624



GEFS Week-1 Exceedance Prob. > 25mm  
Valid: 20200618 - 20200624



GEFS Week-1 Exceedance Prob. > 50mm  
Valid: 20200618 - 20200624



Rainfall deficit of 10-60mm is expected in most parts of the country during forecast period.

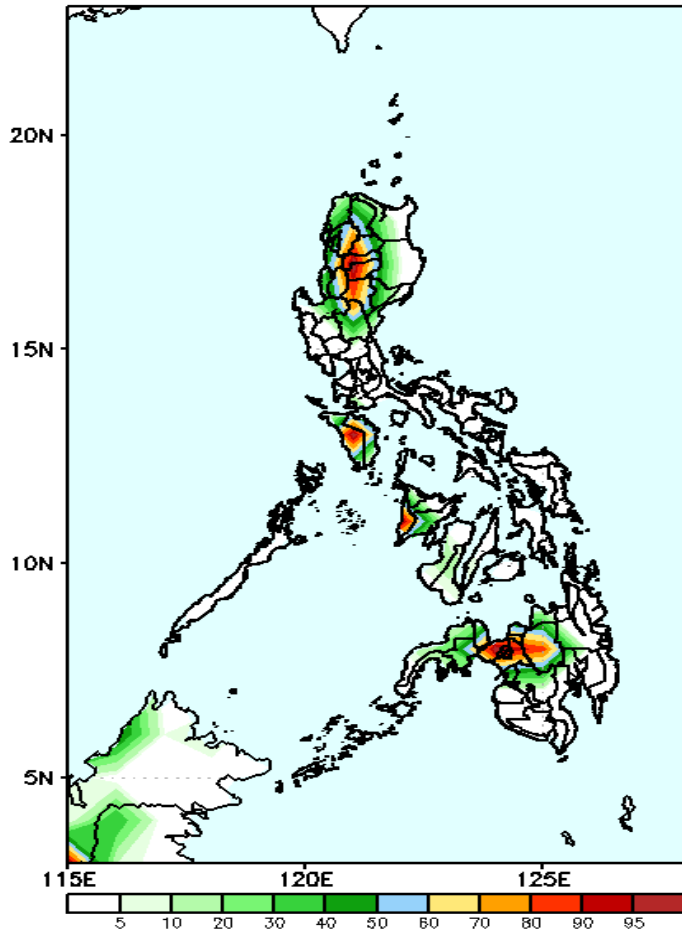
High probability of rainfall to exceed 25mm in most parts of the country except in Davao Region during the forecast period.

High probability of rainfall to exceed 50mm in most parts of CAR, Cagayan Valley, Central Luzon, Mindoro, Samar provinces, western parts of Region 6 & 7 and in northern & western parts of Mindanao while less likely for the rest of the country during the forecast period.

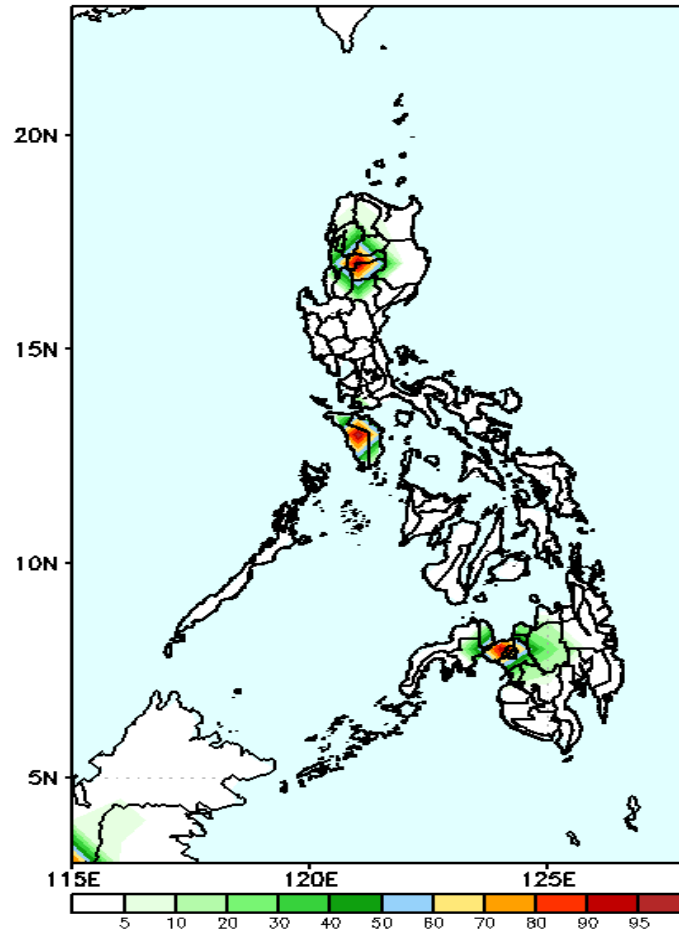
# Exceedance Probability > 100/150/200 mm

## Week 1: June 18-24, 2020

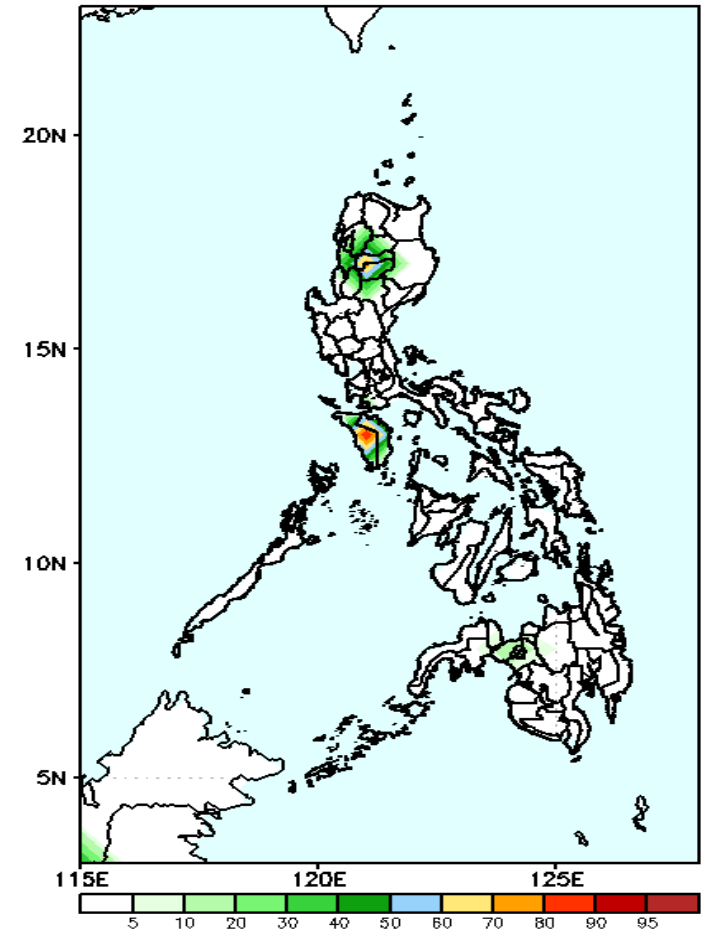
GEFS Week-1 Exceedance Prob. > 100mm  
Valid: 20200618 - 20200624



GEFS Week-1 Exceedance Prob. > 150mm  
Valid: 20200618 - 20200624



GEFS Week-1 Exceedance Prob. > 200mm  
Valid: 20200618 - 20200624



High probability of rainfall to exceed 100mm in Cordillera Region, Mindoro and in northern Mindanao while less likely for the rest of the country during the forecast period.

30-85% probability of rainfall to exceed 100mm in Cordillera Region, Mindoro and in northern Mindanao while less likely for the rest of the country during the forecast period.

30-80% probability of rainfall to exceed 200mm in Cordillera Region and Mindoro while less likely for the rest of the country during the forecast period.

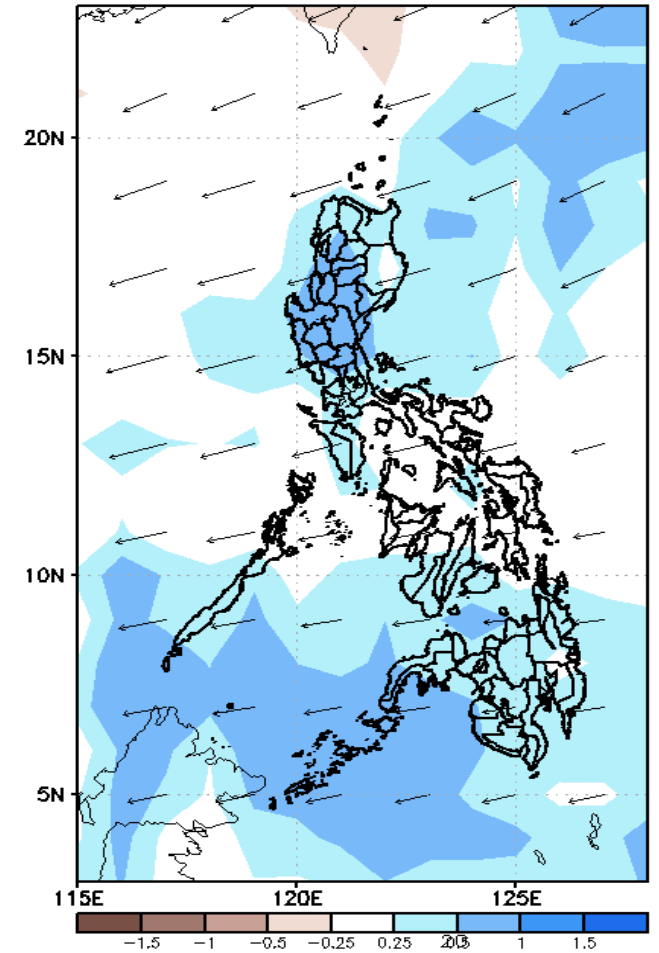
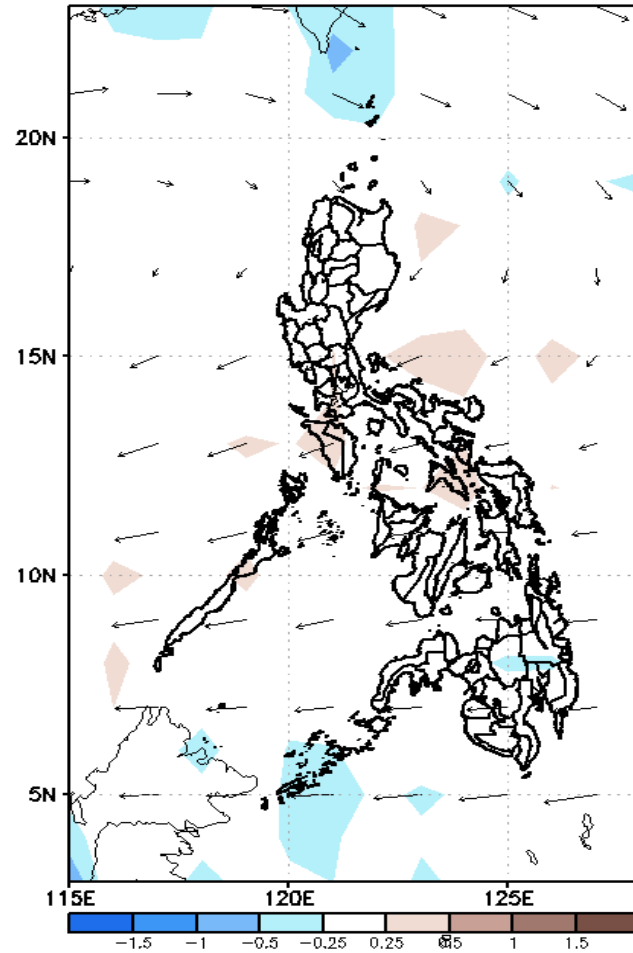
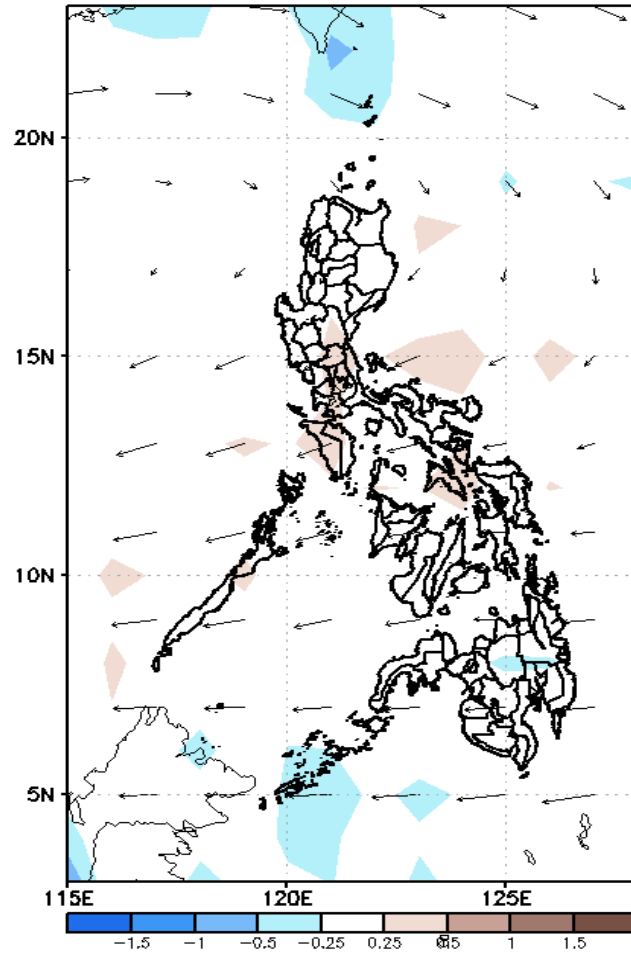
# GEFS Week-2 Forecasts: Divergence & Wind Anomaly

## Week 2: June 25- Jul 01, 2020

GEFS Week-2 850-hPa Divergence and Wind Anom  
Valid: 20200625 - 20200701

GEFS Week-2 700-hPa Divergence and Wind Anom  
Valid: 20200625 - 20200701

GEFS week-2 200-hPa Divergence and Wind Anom  
Valid: 20200625 - 20200701



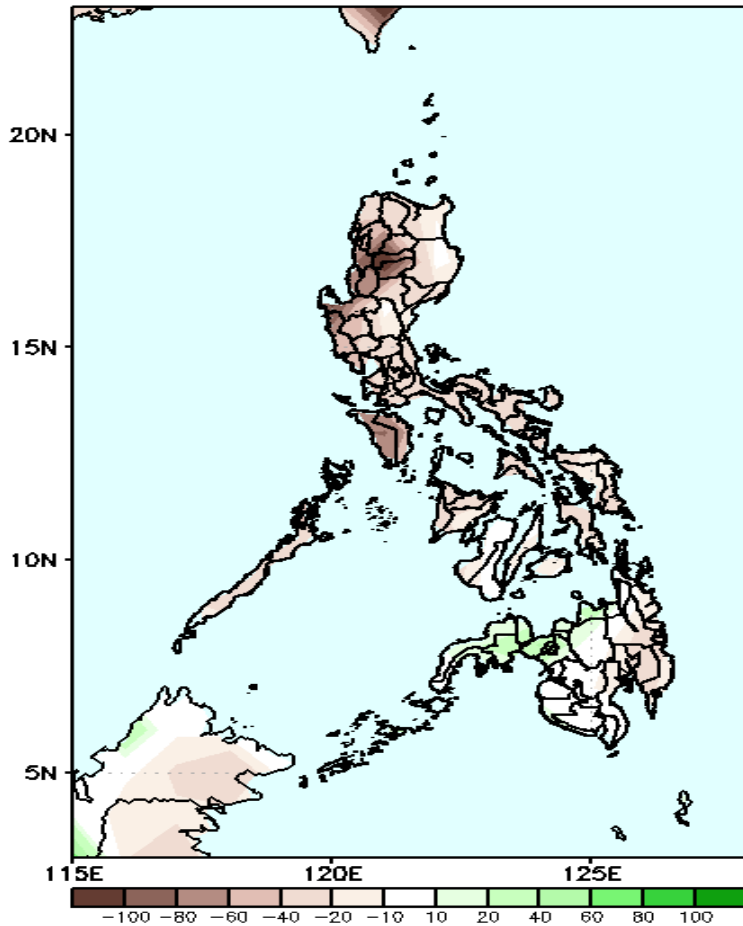
Upper level (200 hPa) Divergence suggest likelihood of precipitation in most parts of Luzon, western and central Visayas and most parts of Mindanao. Southwest Monsoon affecting western Luzon while easterlies affecting most parts of the country during the forecast period.



# Precipitation Anomaly and Exceedance Probability > 25/50 mm

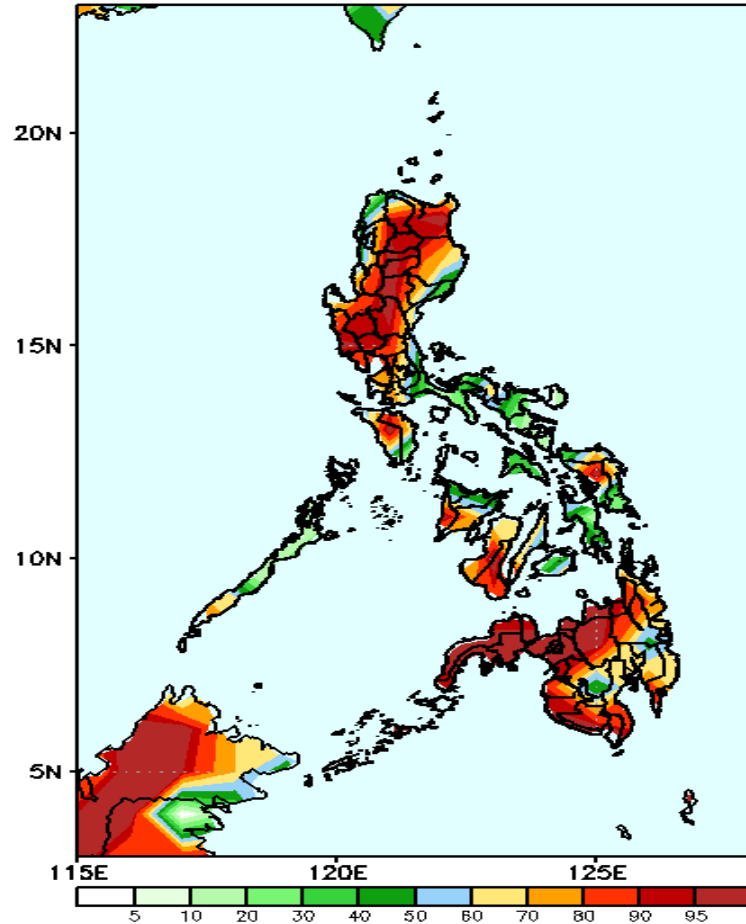
## Week 2: June 25- Jul 01, 2020

GEFS Week-2 Precip Anomaly  
Valid: 20200625 - 20200701



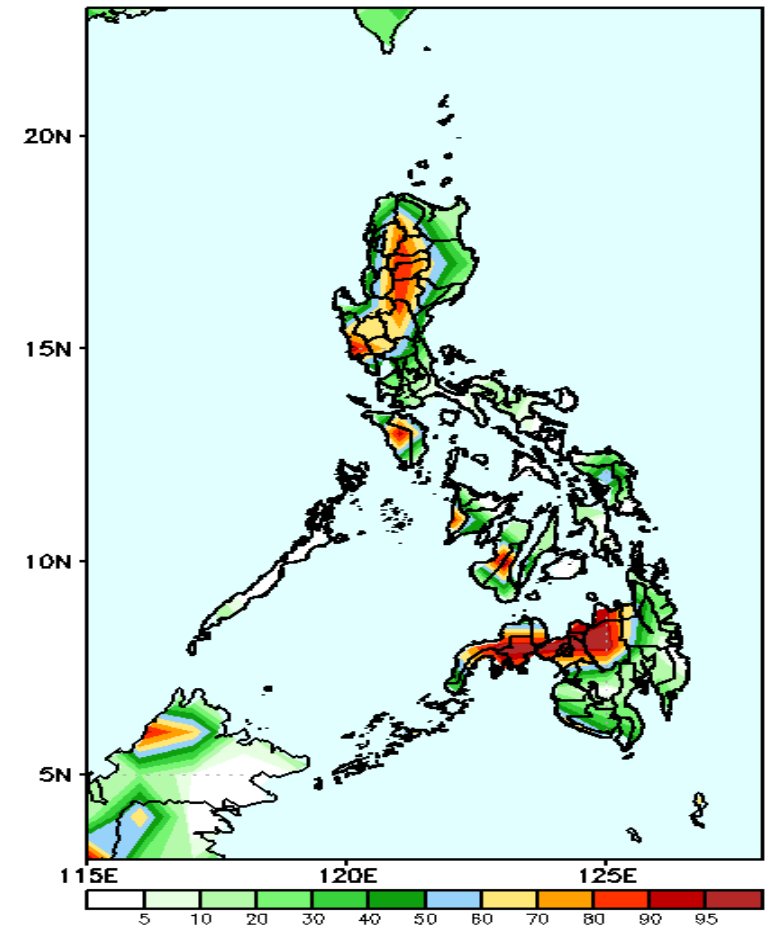
Rainfall deficit of up to 100mm is expected in Luzon while up to 40mm rainfall deficit for the rest of the country during the forecast period.

GEFS Week-2 Exceedance Prob. > 25mm  
Valid: 20200625 - 20200701



High probability of rainfall to exceed 50mm in most parts of the country except in Bicol Region and central parts of Visayas during the forecast period.

GEFS Week-2 Exceedance Prob. > 50mm  
Valid: 20200625 - 20200701



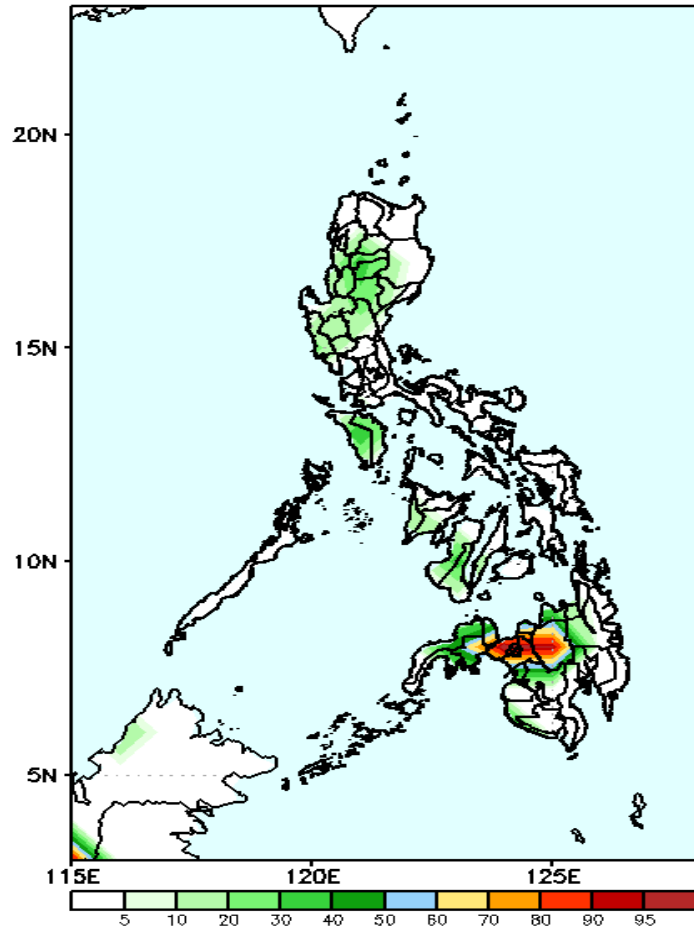
High probability of rainfall to exceed 50mm in most parts of western Luzon, Mindoro and in northern Mindanao and Zamboanga Peninsula while less likely for the rest of the country during the forecast period.



# Exceedance Probability > 100/150/200 mm

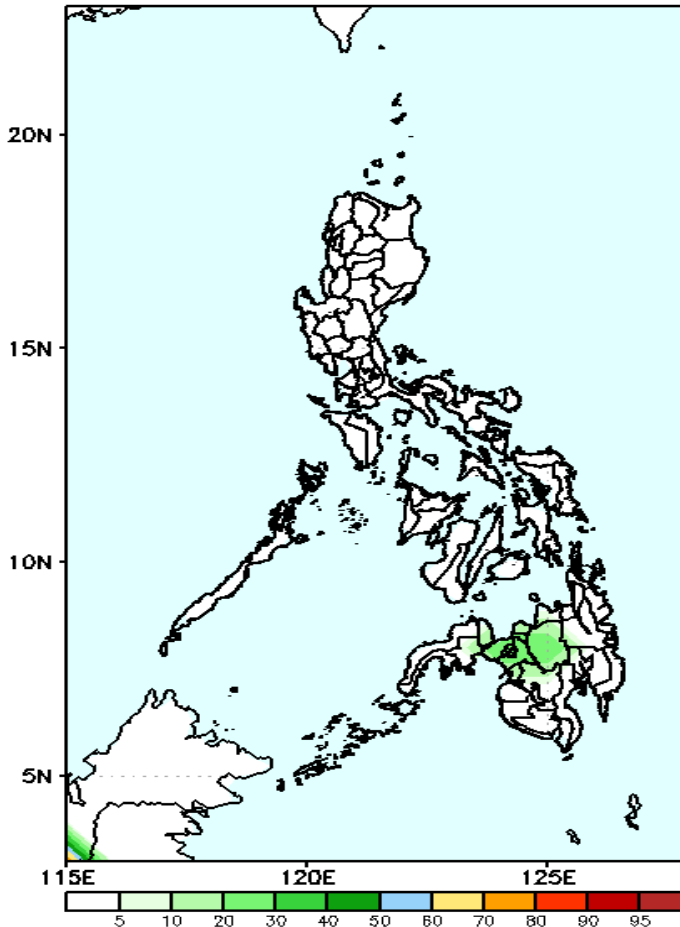
## Week 2: June 25- Jul 01, 2020

GEFS Week-2 Exceedance Prob. > 100mm  
Valid: 20200625 - 20200701



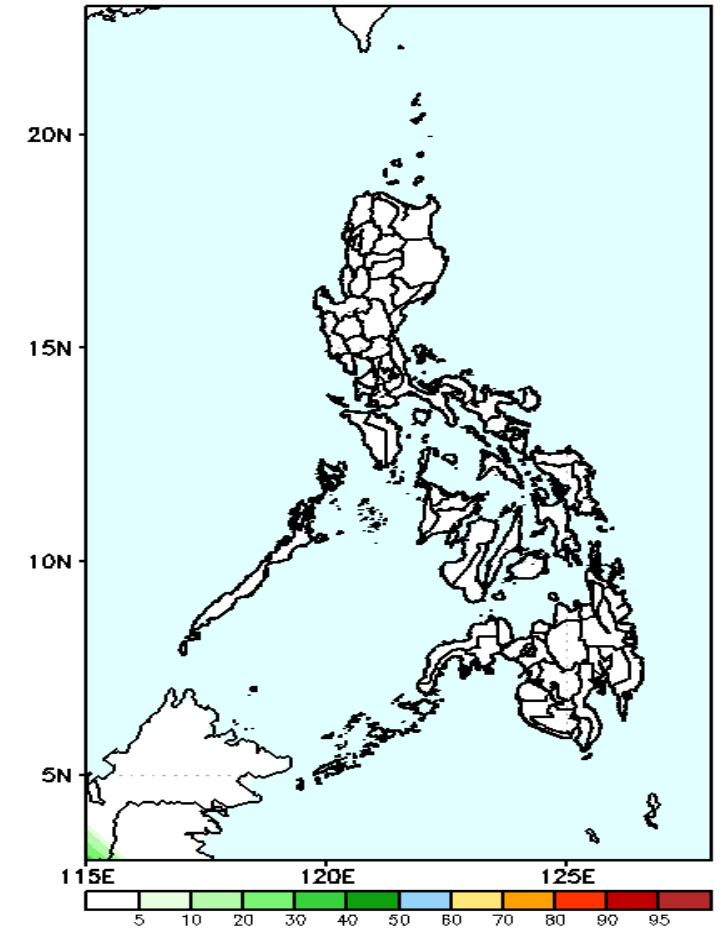
High probability of rainfall to exceed 100mm in northern Mindanao while less likely for the rest of the country during the forecast period.

GEFS Week-2 Exceedance Prob. > 150mm  
Valid: 20200625 - 20200701



Less probability of rainfall to exceed 150mm in most parts of the country during the forecast period.

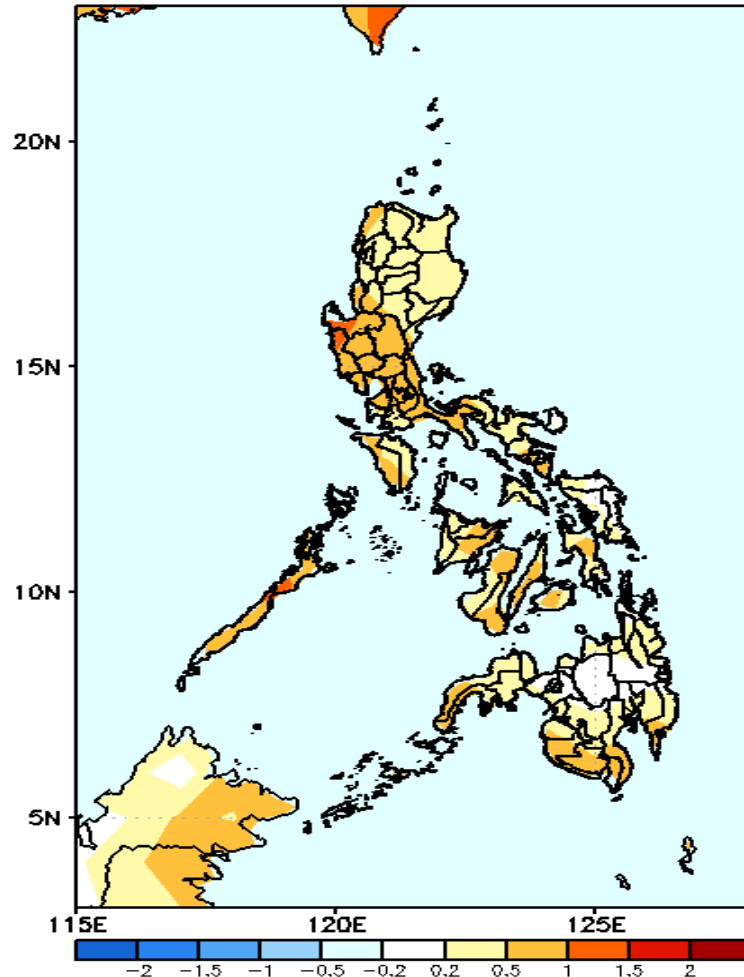
GEFS Week-2 Exceedance Prob. > 200mm  
Valid: 20200625 - 20200701



Less probability of rainfall to exceed 200mm in most parts of the country during the forecast period.

# GEFS Week-1 & 2 Forecasts: T2m Anomaly

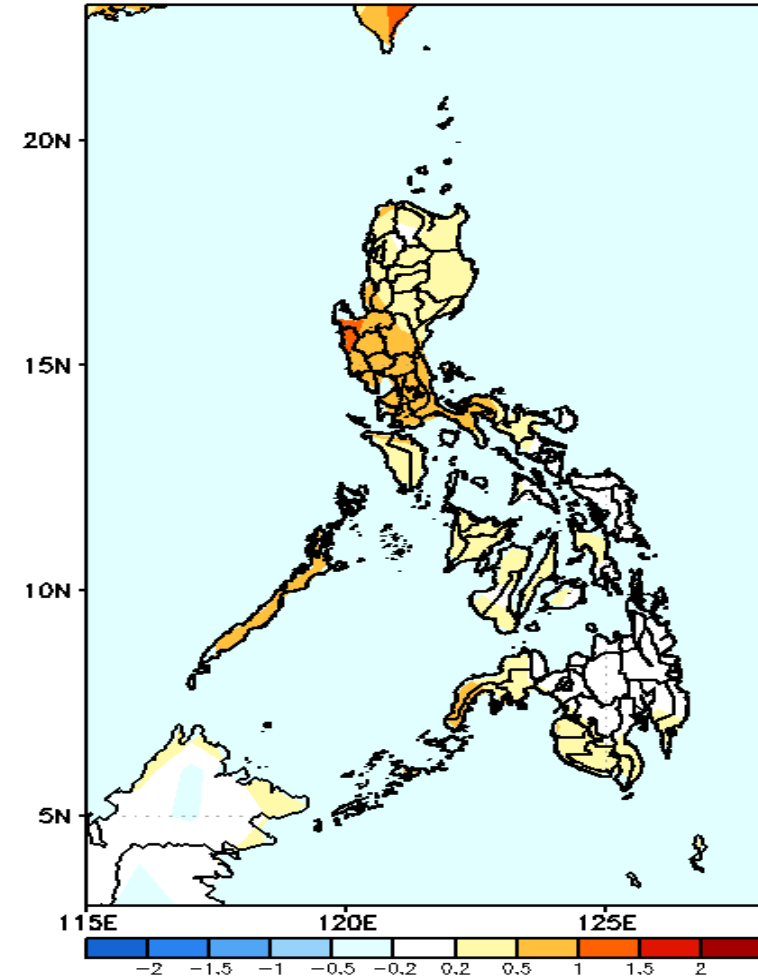
GEFS Week-1 T2m Anomaly  
Valid: 20200618 - 20200624



**2m Temperature Week 1: June 18-24, 2020**

Average to slightly warmer than average surface air temperature will likely experience in most parts of the country during the forecast period.

GEFS Week-2 T2m Anomaly  
Valid: 20200625 - 20200701



**2m Temperature Week 2: June 25- Jul 01, 2020**

Average to slightly warmer than average surface air temperature will likely experience in most parts of the country during the forecast period.