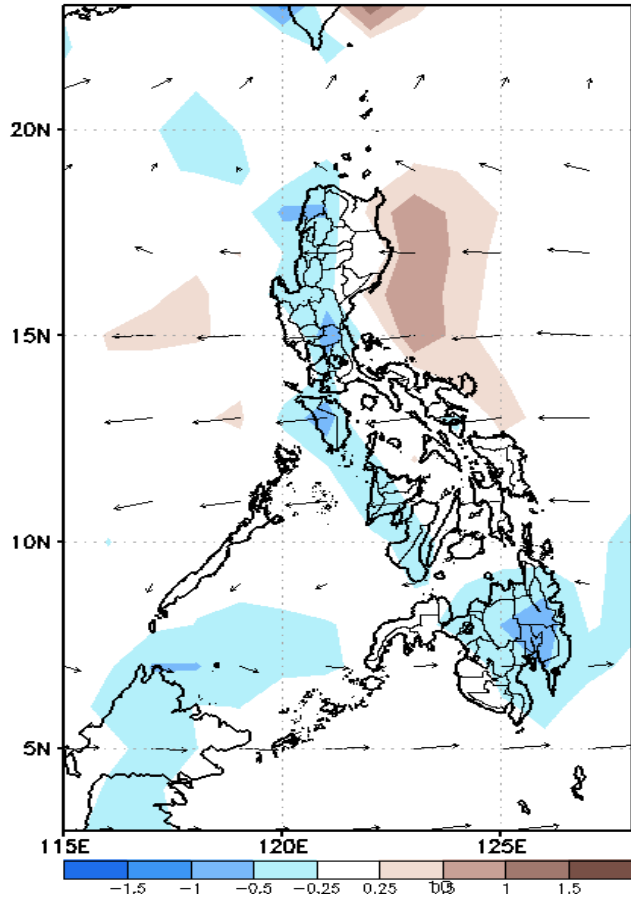


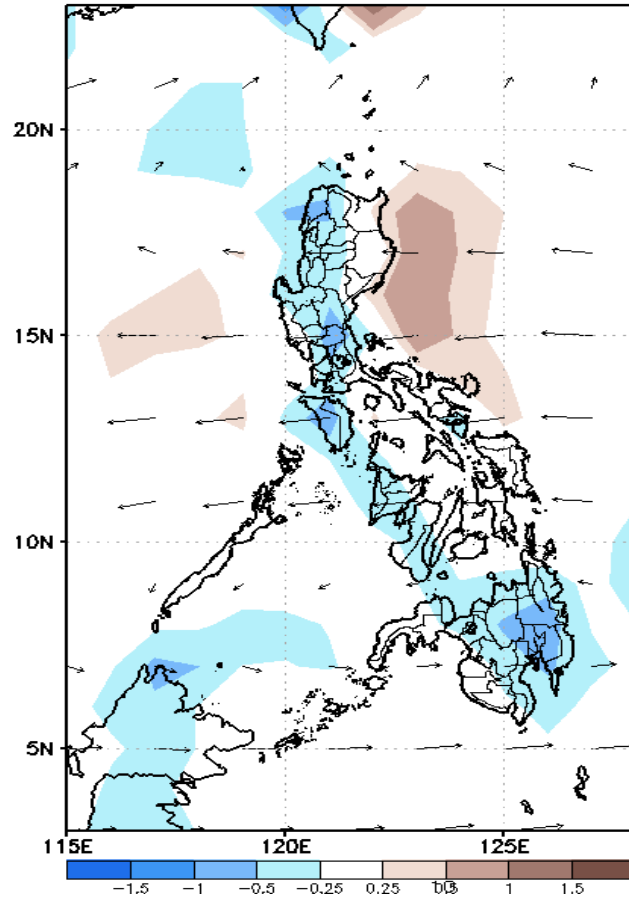
# GEFS Week-1 Forecasts: Divergence & Wind

Week 1: Dec 19 - 25, 2019

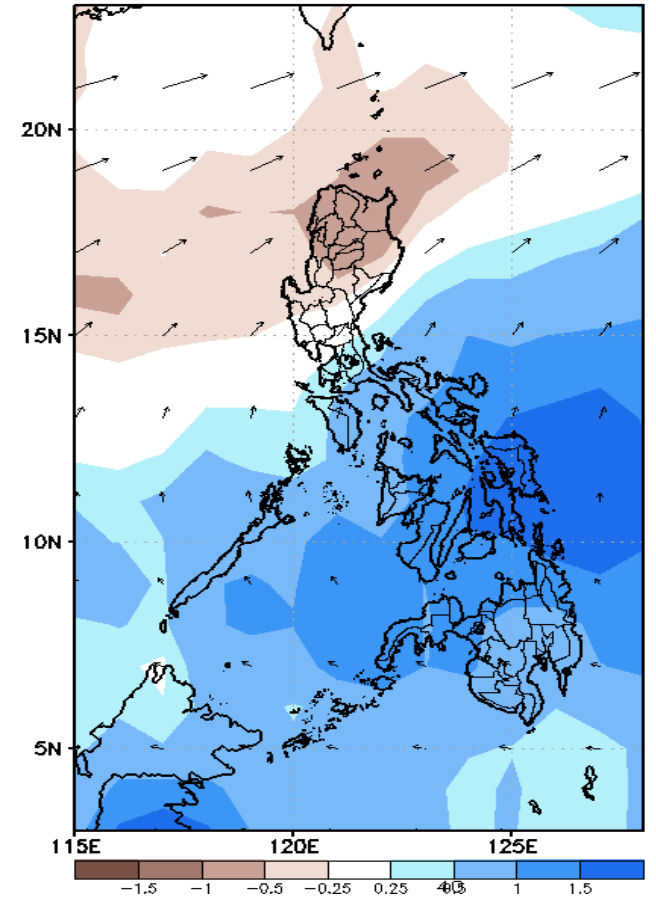
GEFS Week-1 850-hPa Divergence and Wind  
Valid: 20191219 - 20191225



GEFS Week-1 700-hPa Divergence and Wind  
Valid: 20191219 - 20191225



GEFS Week-1 200-hPa Divergence and Wind  
Valid: 20191219 - 20191225

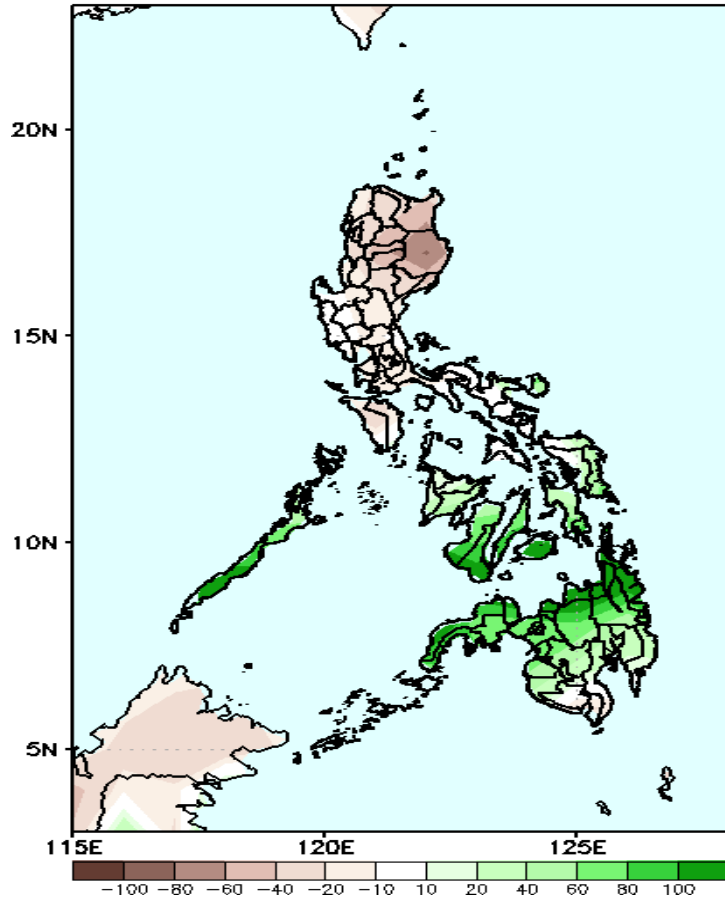


Low level (850 hPa) Divergence suggest likelihood of precipitation in most parts of the country. Moreover, Northeast and easterly winds may affect most parts of the country during the forecast period.

# GEFS Week-1 Forecasts: Divergence & Wind

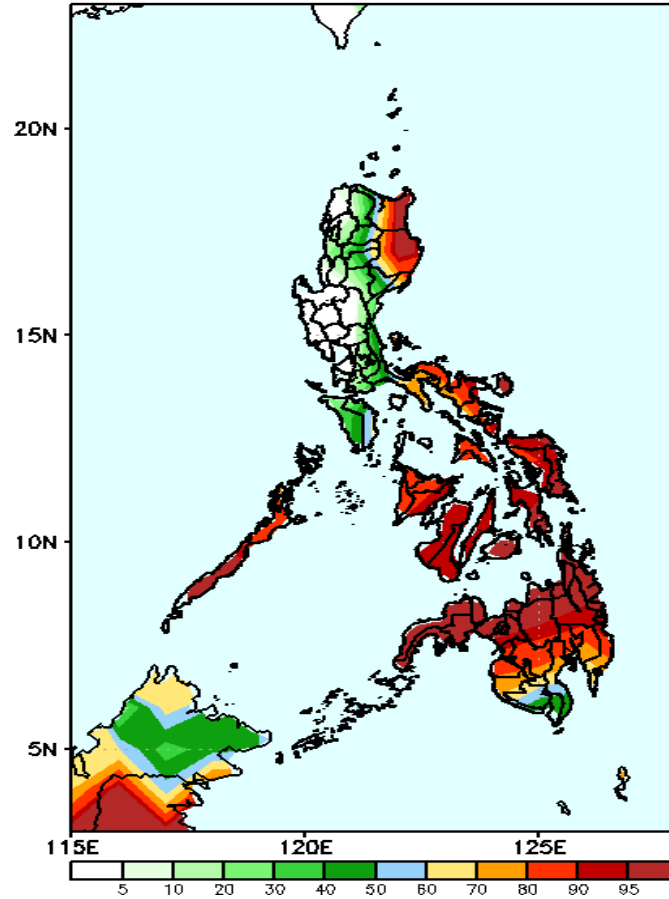
Week 1: Dec 19 - 25, 2019

GEFS Week-1 Precip Anomaly  
Valid: 20191219 - 20191225



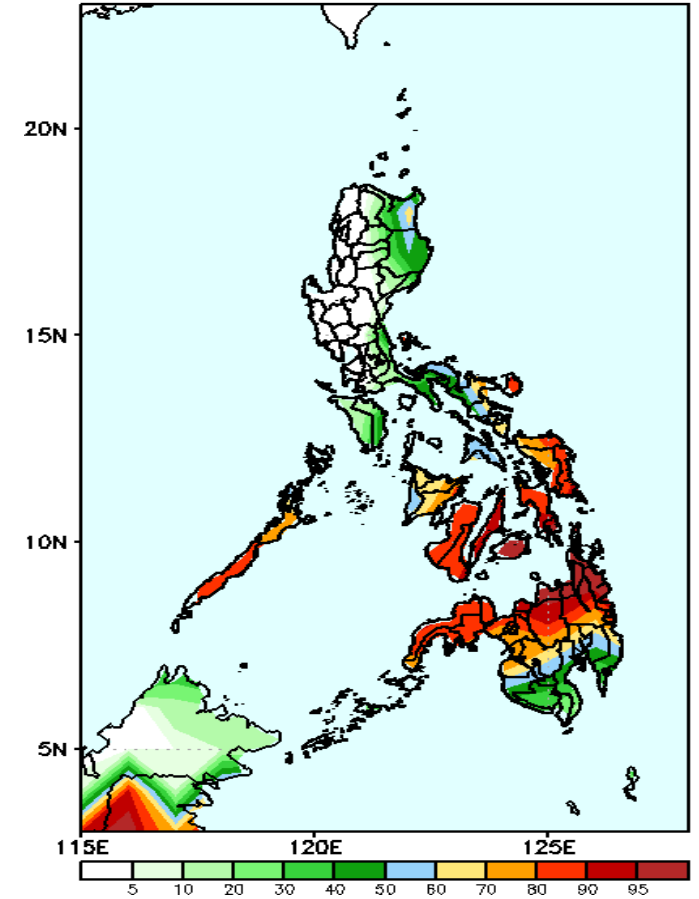
Increase of rainfall up to 100 mm in Southern Visayas and northern Mindanao is expected while Luzon will likely have a rainfall deficit of up to 60 mm .

GEFS Week-1 Exceedance Prob. > 25mm  
Valid: 20191219 - 20191225



High probabilities for rainfall exceeding 25mm in eastern Luzon, most parts of Visayas and Mindanao while less likely in the western part of Luzon.

GEFS Week-1 Exceedance Prob. > 50mm  
Valid: 20191219 - 20191225

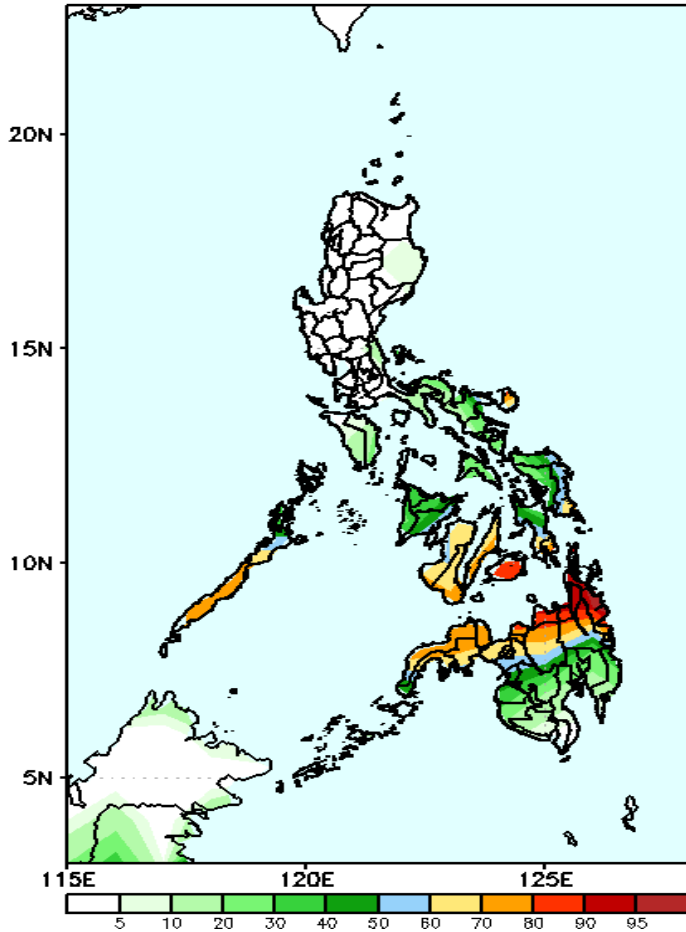


High probabilities for rainfall exceeding 50mm in southern parts of Visayas and northern Mindanao while less likely for the rest of the country.

# GEFS Week-1 Forecasts: Divergence & Wind

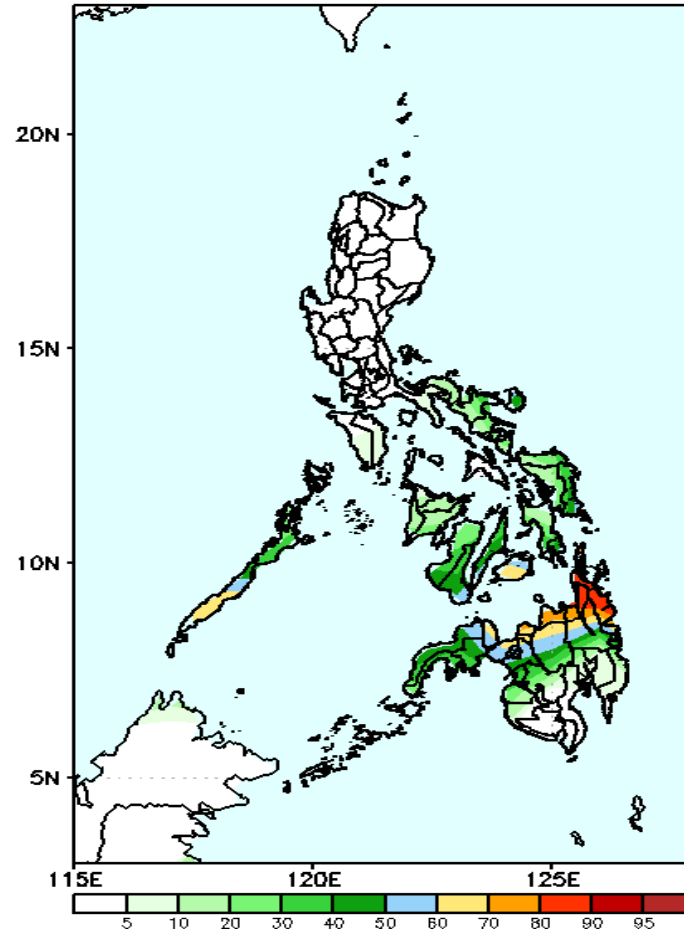
## Week 1: Dec 19 - 25, 2019

GEFS Week-1 Exceedance Prob. > 100mm  
Valid: 20191219 - 20191225



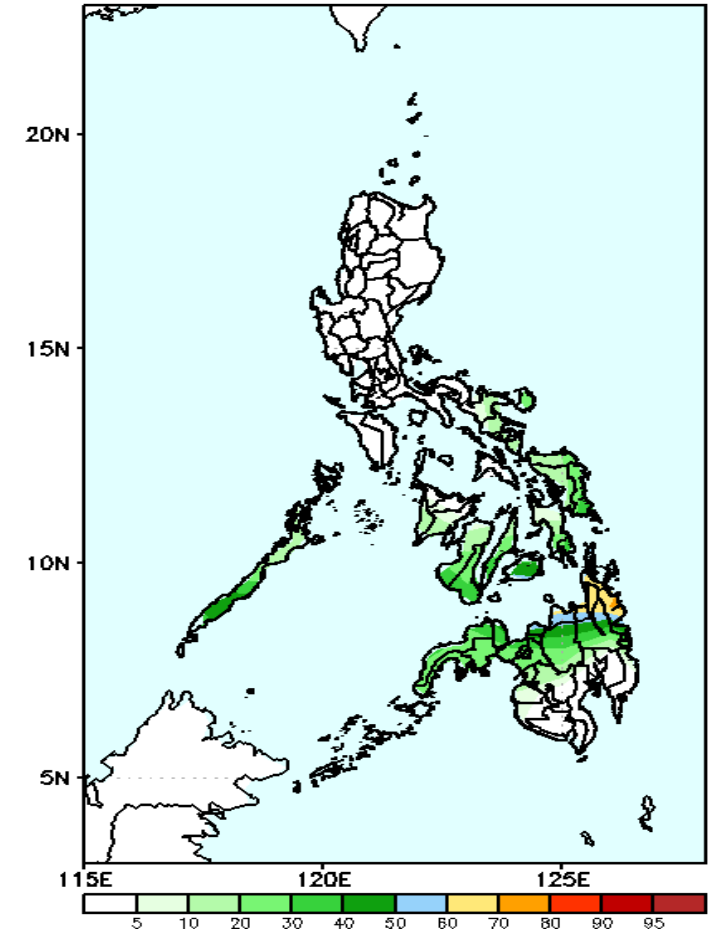
50-95% probability of rainfall to exceed 100mm in northern Mindanao, southern Palawan, Panay Island Cebu and Bohol, while less likely for the rest of the country.

GEFS Week-1 Exceedance Prob. > 150mm  
Valid: 20191219 - 20191225



50-95% probability of rainfall to exceed 150mm in northern Mindanao, 20-50% in Visayas and less likely in Luzon.

GEFS Week-1 Exceedance Prob. > 200mm  
Valid: 20191219 - 20191225

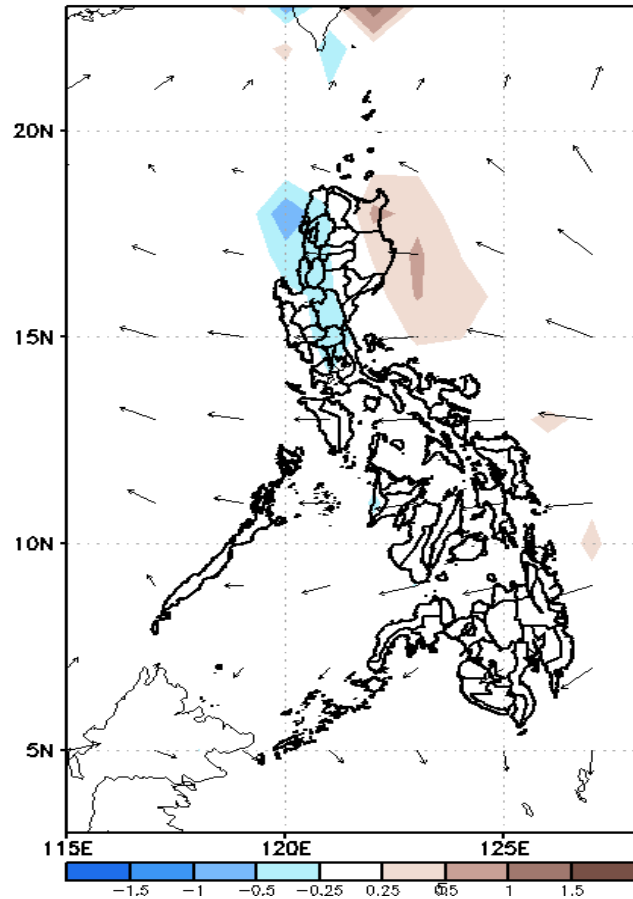


20-70% probability of rainfall to exceed 200mm in northern Mindanao and most parts of Visayas while less likely for the rest of the country.

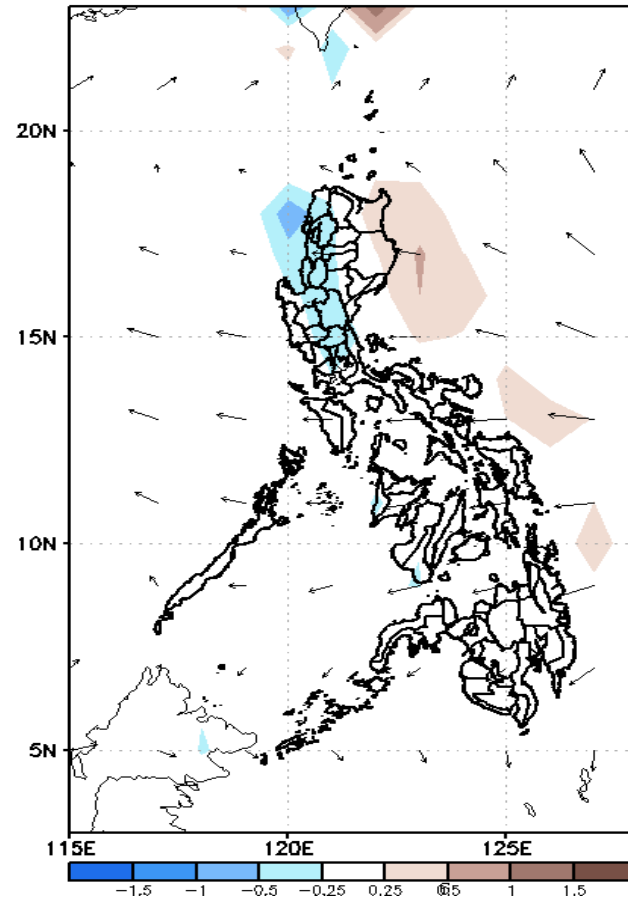
# GEFS Week-2 Forecasts: Divergence & Wind

Week 2: Dec 26 – Jan 01, 2019

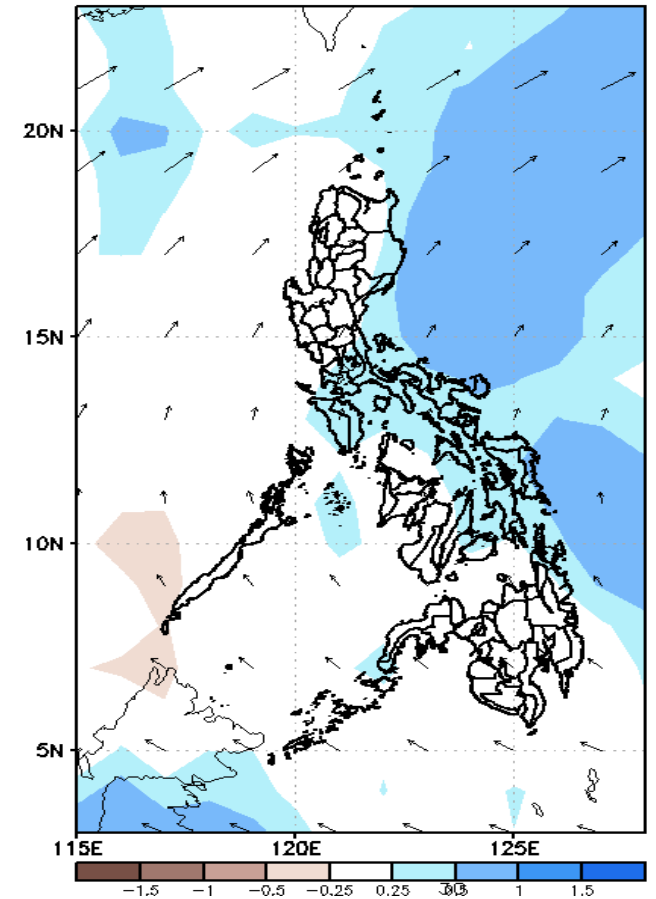
GEFS Week-2 850-hPa Divergence and Wind  
Valid: 20191226 – 20200101



GEFS Week-2 700-hPa Divergence and Wind  
Valid: 20191226 – 20200101



GEFS week-2 200-hPa Divergence and Wind  
Valid: 20191226 – 20200101

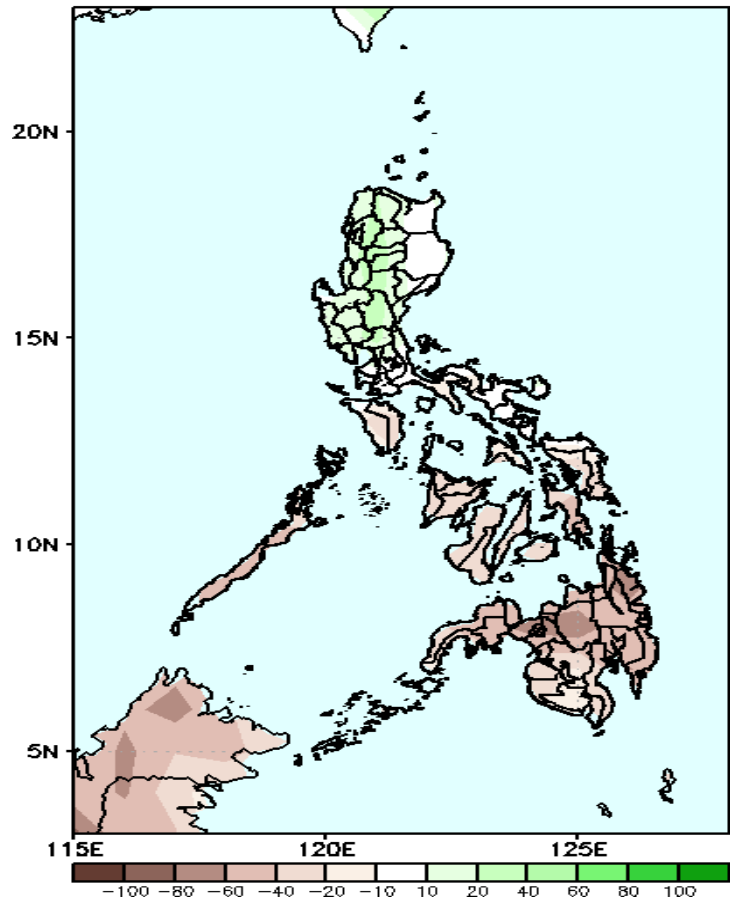


Low level (850 hPa) Divergence suggest likelihood of precipitation in eastern Luzon. NE winds may still affect northern Luzon, easterly winds may affect southern Luzon and a cyclonic circulation may affect Visayas and Mindanao during the forecast period.

# GEFS Week-2 Forecasts: Divergence & Wind

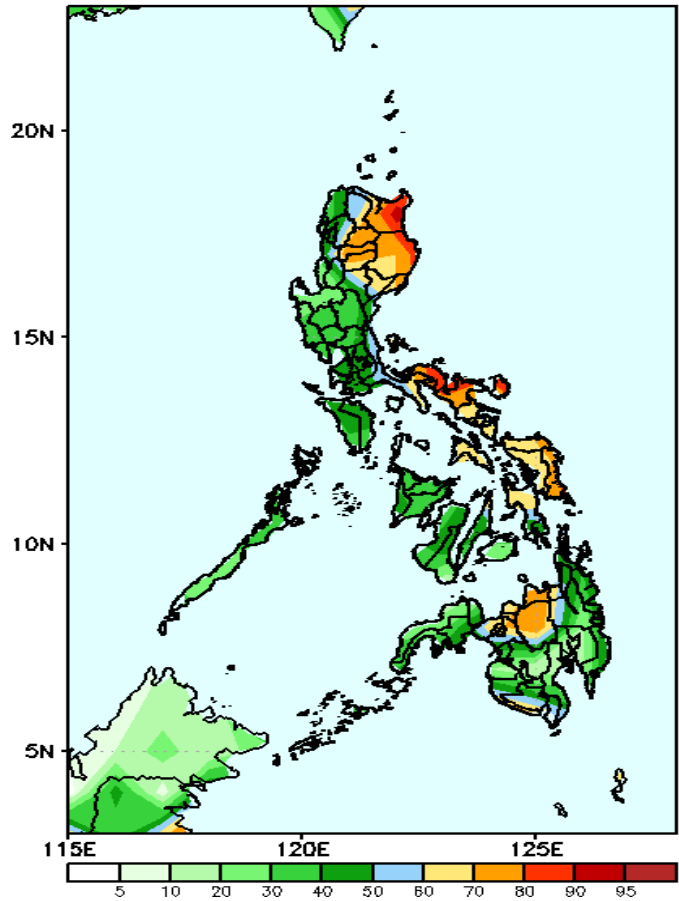
Week 2: Dec 26 – Jan 01, 2019

GEFS Week-2 Precip Anomaly  
Valid: 20191226 – 20200101



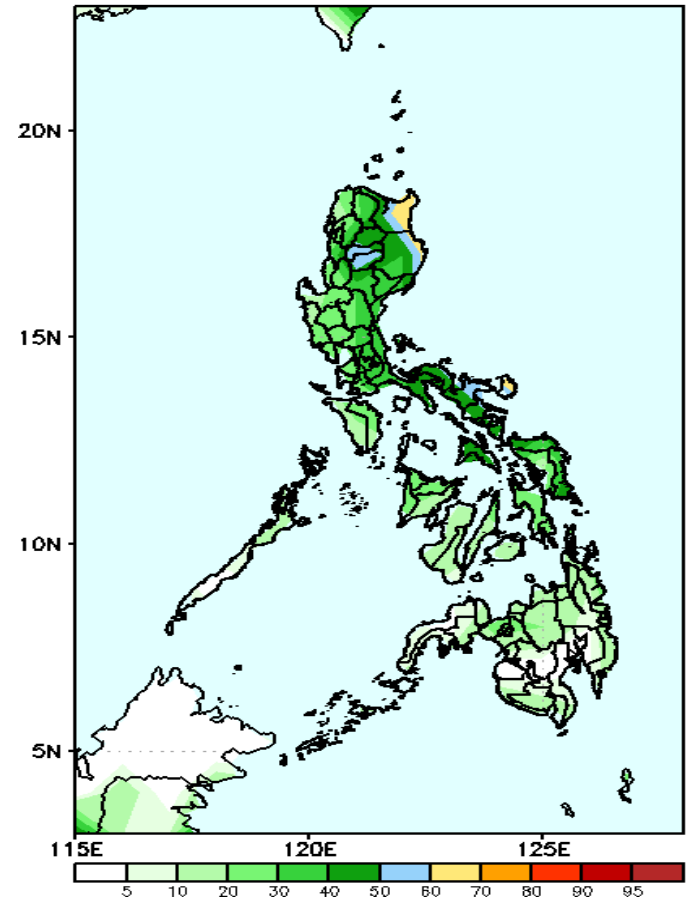
Rainfall deficit of up to 40mm in most parts of Visayas and Mindanao is expected while western Luzon will likely have an increase of rainfall up to 50mm .

GEFS Week-2 Exceedance Prob. > 25mm  
Valid: 20191226 – 20200101



High probabilities for rainfall to exceed 25mm in eastern Luzon, eastern parts of Luzon and Visayas and Region X is expected while up to 50% probability for the rest of the country.

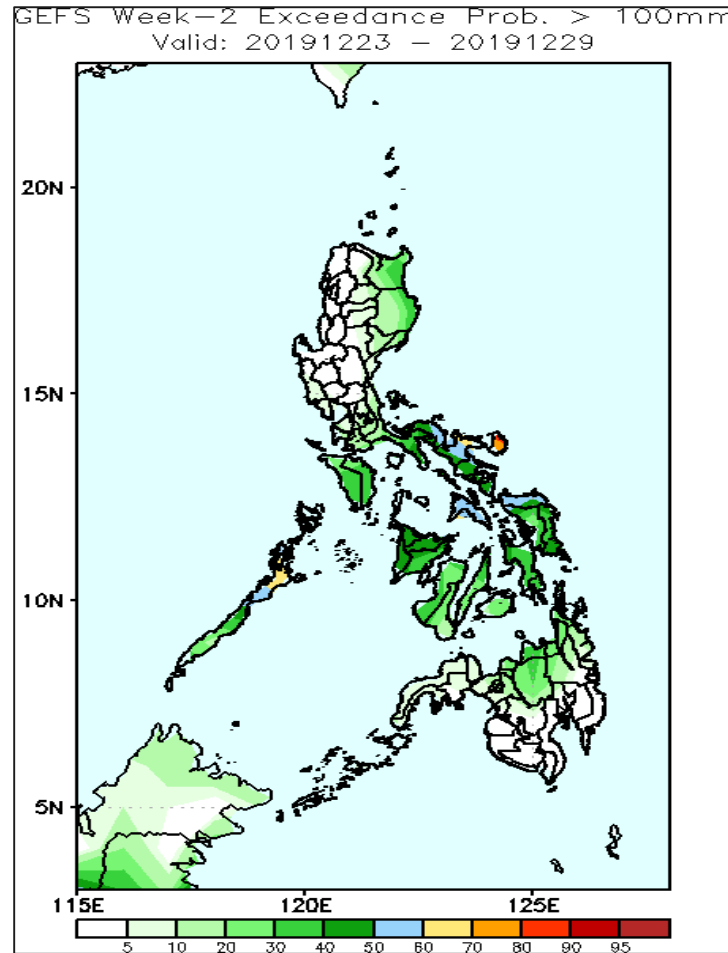
GEFS Week-2 Exceedance Prob. > 50mm  
Valid: 20191226 – 20200101



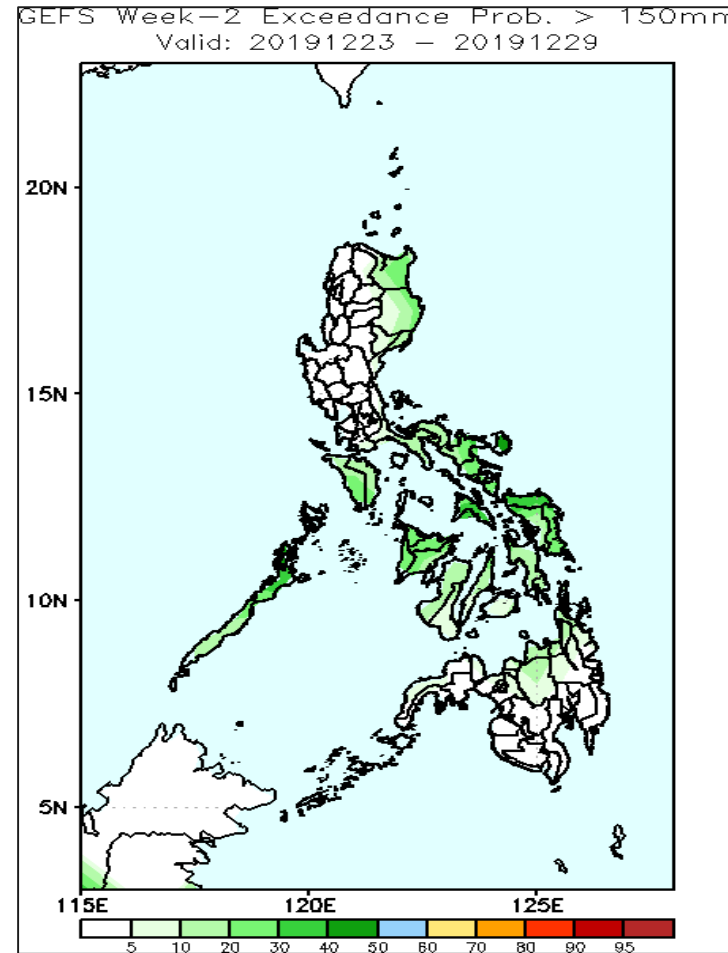
10-50% probabilities for rainfall exceeding 50mm in most parts of the country and up to 70% in Cagayan.

# GEFS Week-2 Forecasts: Divergence & Wind

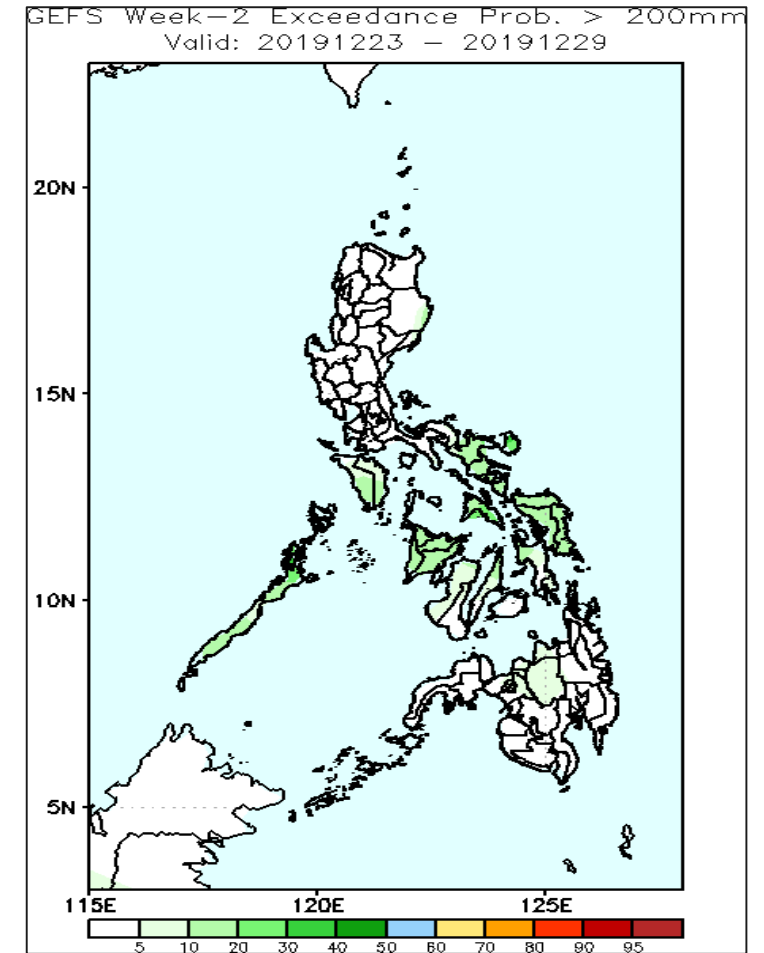
Week 2: Dec 26 – Jan 01, 2019



10-60% probability of rainfall to exceed 100mm in eastern and southern Luzon, most parts of Visayas and northern Mindanao is expected while less likely for the rest of the country.

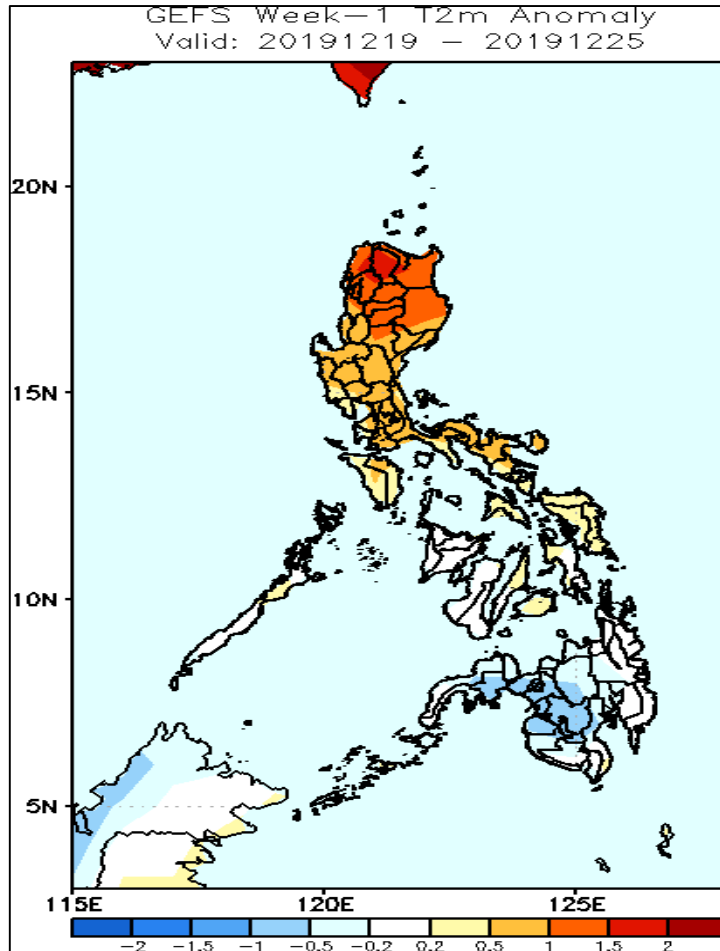


10-50% probability of rainfall to exceed 150mm in Isabela and Cagayan, southern Luzon and most parts of Visayas is expected while less likely for the rest of the country.



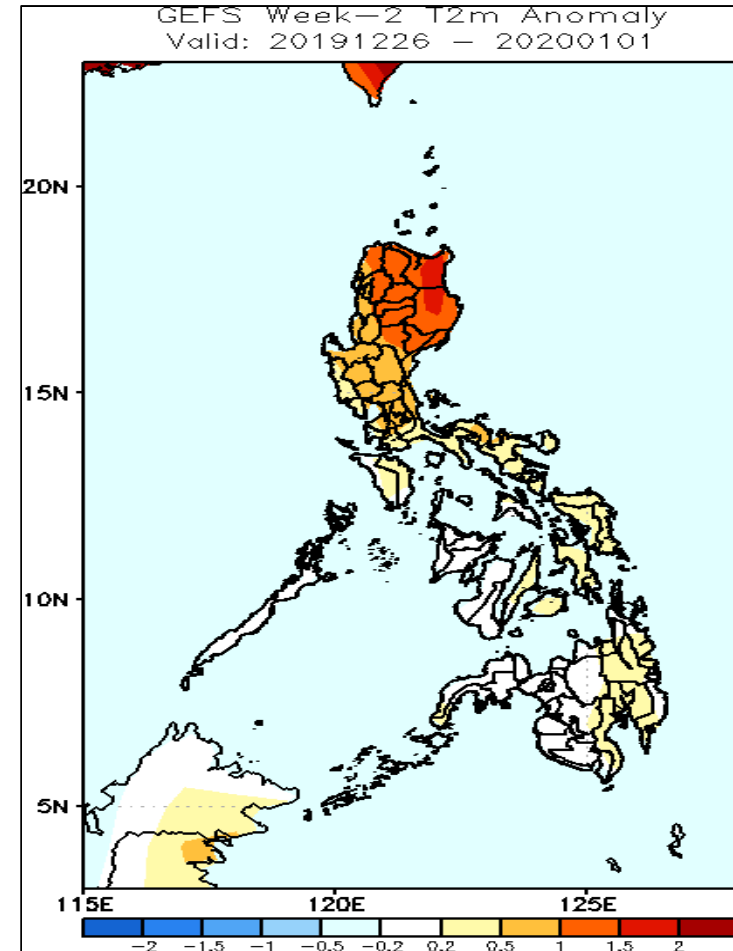
Less probability of rainfall to exceed 200mm in most parts of the country is expected during the forecast period.

# GEFS Week-1 & 2 Forecasts: T2m Anomaly



## 2m Temperature Week1 (Dec 19-25, 2019)

Slightly warmer to warmer than average surface air temperature will likely experience in most parts of Luzon and Visayas while near to slightly cooler than average in most parts of Mindanao is expected.



## 2m Temperature Week 2: Dec 26 - Jan 01, 2019

Slightly warmer to warmer than average surface air temperature will likely experience in most parts of Luzon, eastern parts of Visayas and Mindanao is expected.