



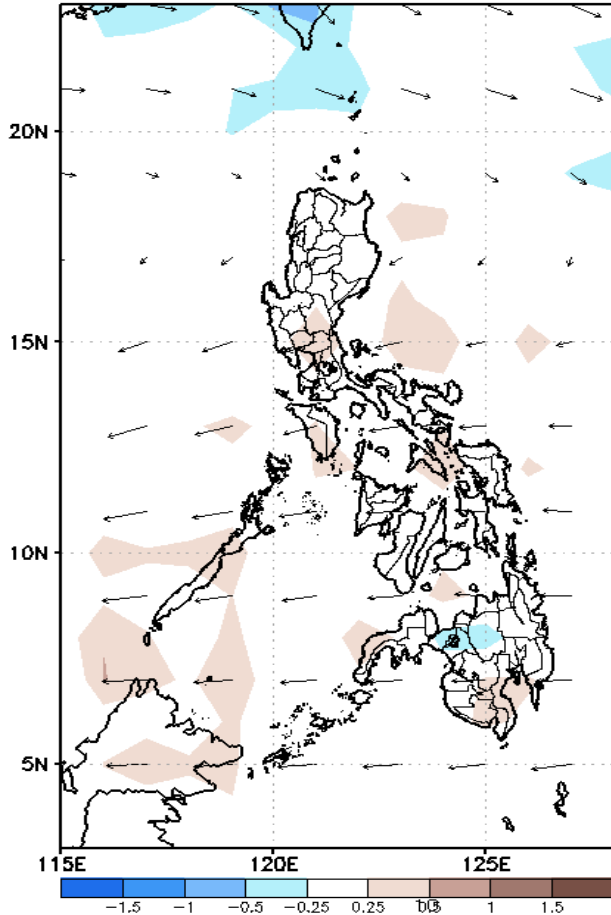
Week 1 & Week 2 Forecast for the Philippines using GEFS Model



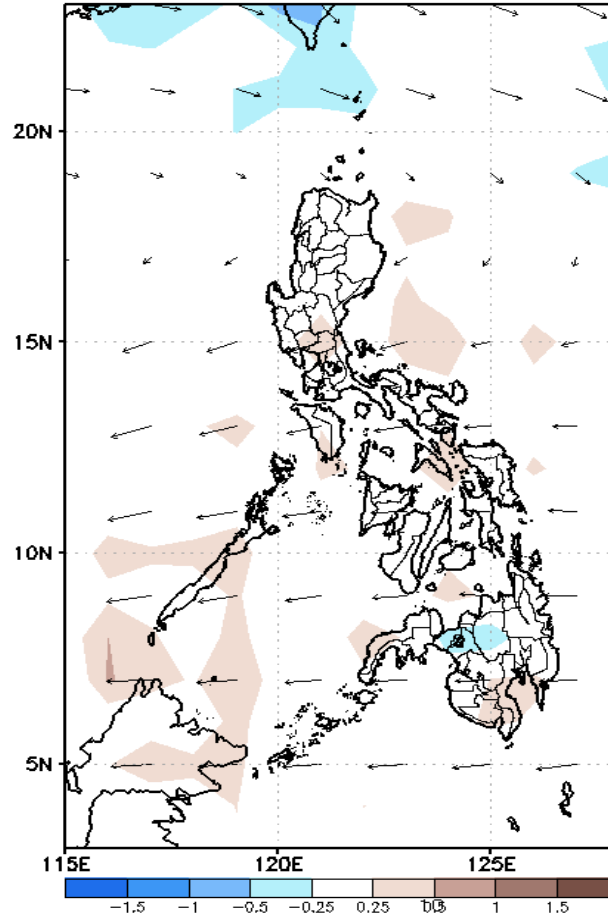
GEFS Week-1 Forecasts: Divergence & Wind Anomaly

Week 1: June 22-28, 2020

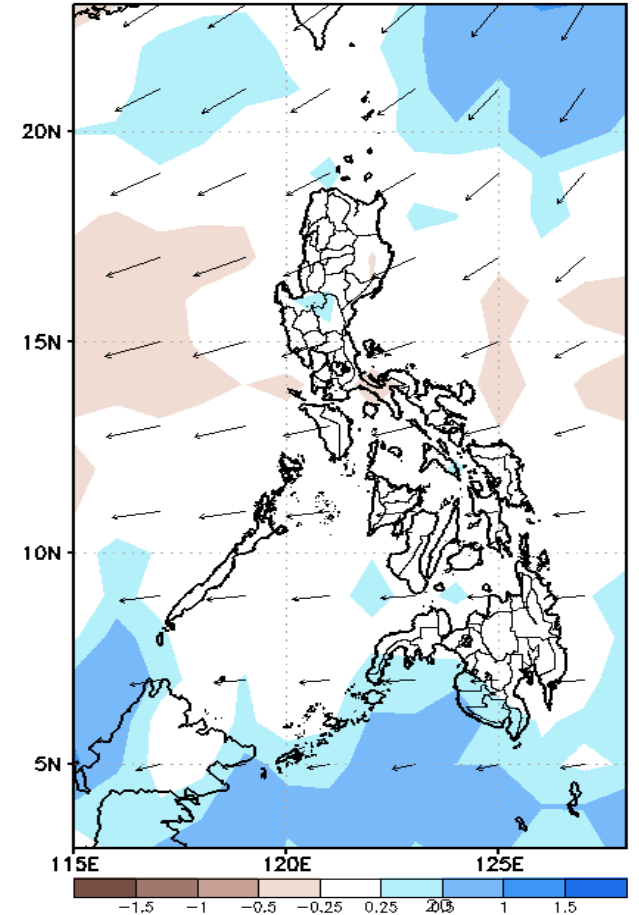
GEFS Week-1 850-hPa Divergence and Wind Anom
Valid: 20200622 - 20200628



GEFS Week-1 700-hPa Divergence and Wind Anom
Valid: 20200622 - 20200628



GEFS Week-1 200-hPa Divergence and Wind Anom
Valid: 20200622 - 20200628

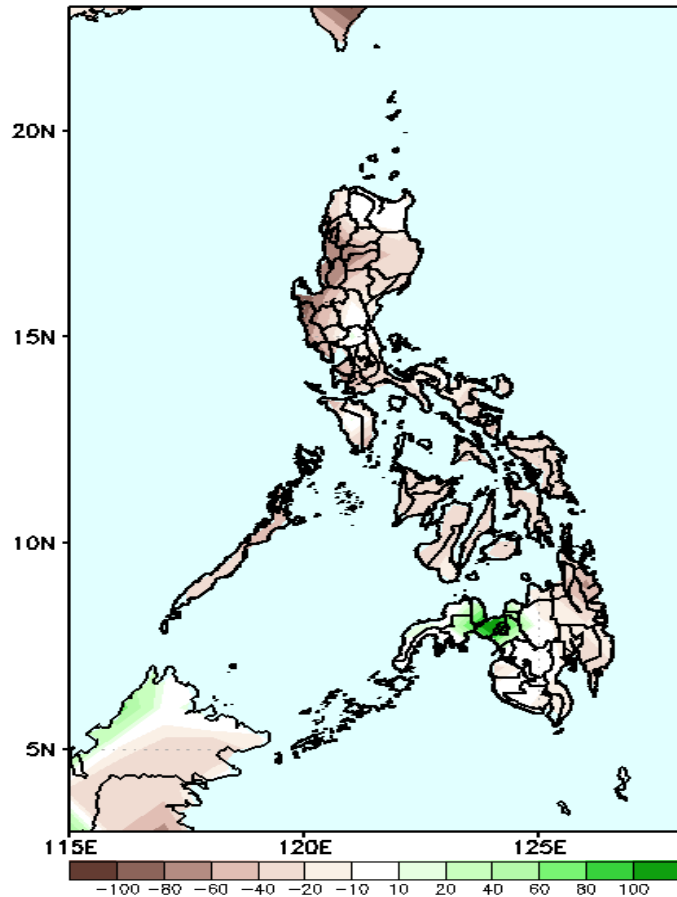


Upper level (200 hPa) Divergence suggest less likelihood of precipitation in most parts of the country except in the western parts of Mindanao. Southwest surface windflow affecting northern Luzon while easterlies affecting most parts of the country during the forecast period.

Precipitation Anomaly and Exceedance Probability > 25/50 mm

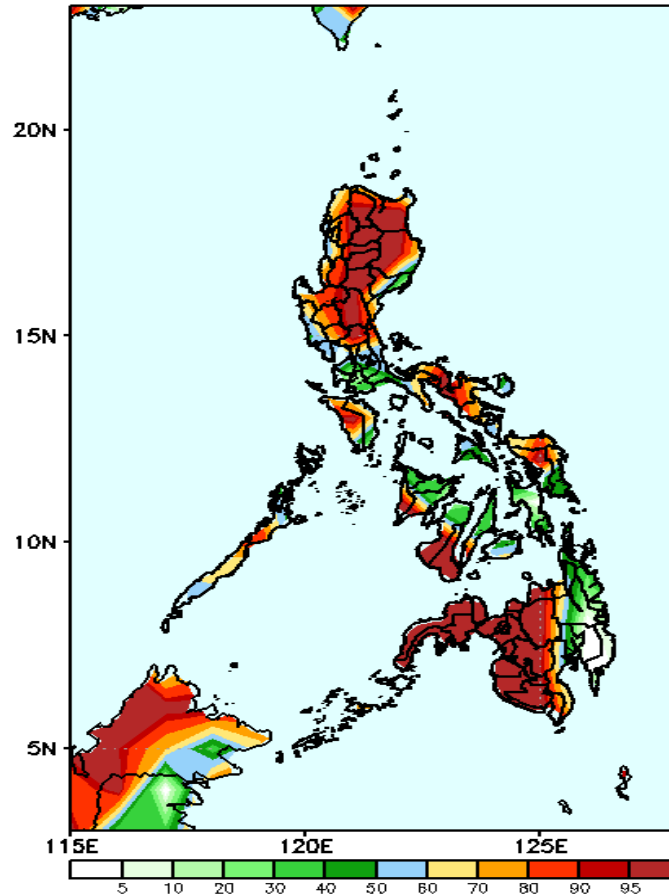
Week 1: June 22-28, 2020

GEFS Week-1 Precip Anomaly
Valid: 20200622 - 20200628



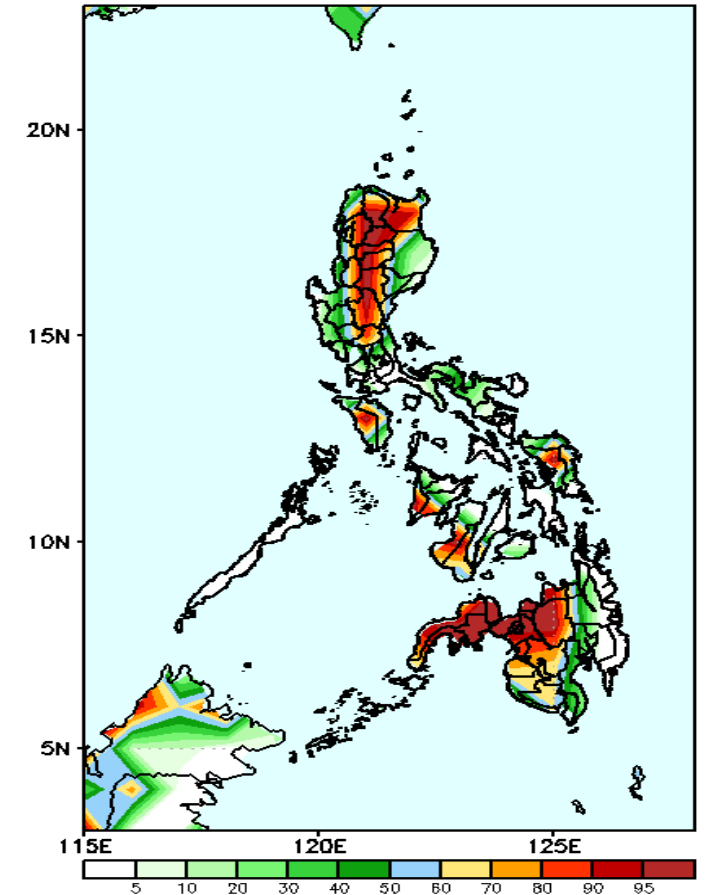
Rainfall deficit of 10-60mm is expected in most parts of the country except in Lanao provinces where 40-80mm increase is likely during forecast period.

GEFS Week-1 Exceedance Prob. > 25mm
Valid: 20200622 - 20200628



High probability of rainfall to exceed 25mm in most parts of the country except in southern Luzon, central Visayas and eastern Mindanao during the forecast period.

GEFS Week-1 Exceedance Prob. > 50mm
Valid: 20200622 - 20200628

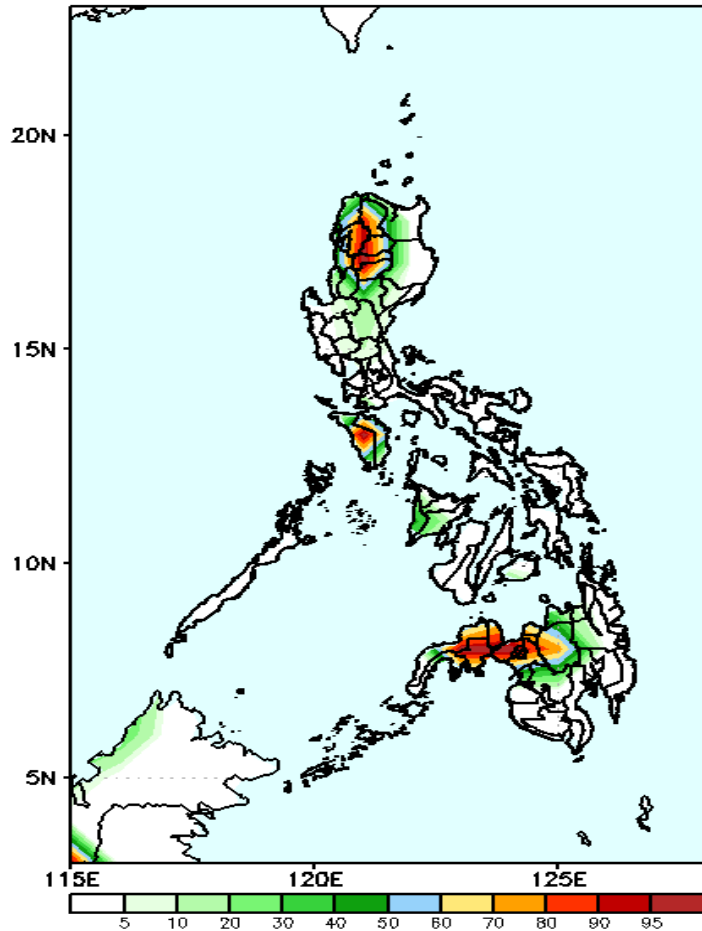


High probability of rainfall to exceed 50mm in most parts of CAR, Cagayan Valley, Central Luzon, Mindoro, Samar provinces, western parts of Region 6 & 7 and in northern & western parts of Mindanao while less likely for the rest of the country during the forecast period.

Exceedance Probability > 100/150/200 mm

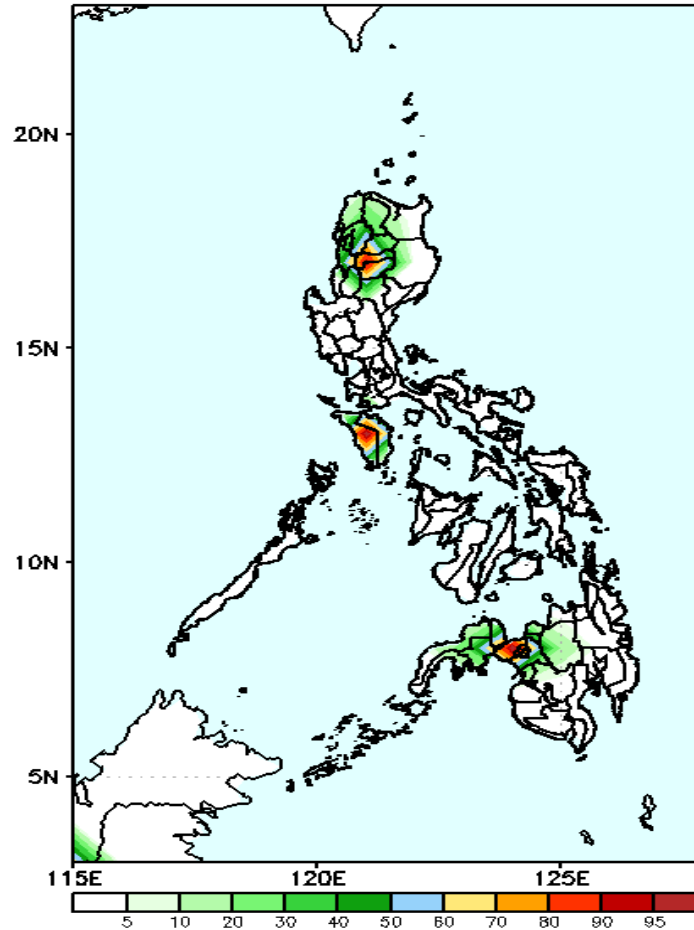
Week 1: June 22-28, 2020

GEFS Week-1 Exceedance Prob. > 100mm
Valid: 20200622 - 20200628



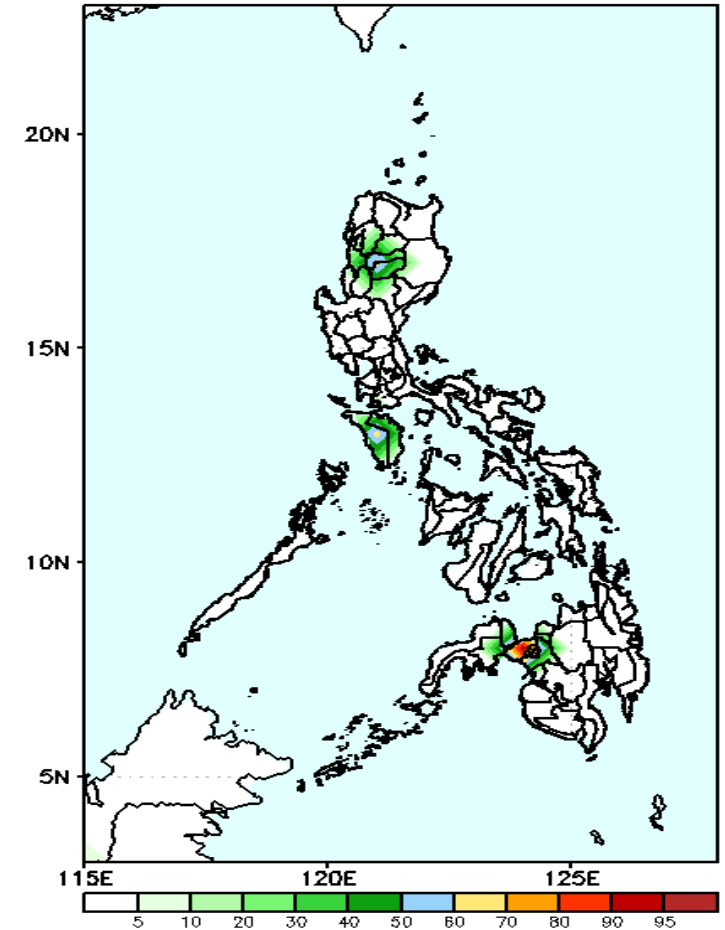
High probability of rainfall to exceed 100mm in Cordillera Region, Mindoro and in northern Mindanao while less likely for the rest of the country during the forecast period.

GEFS Week-1 Exceedance Prob. > 150mm
Valid: 20200622 - 20200628



30-85% probability of rainfall to exceed 100mm in Cordillera Region, Mindoro and in northern Mindanao while less likely for the rest of the country during the forecast period.

GEFS Week-1 Exceedance Prob. > 200mm
Valid: 20200622 - 20200628



30-80% probability of rainfall to exceed 200mm in Lanao provinces while less likely for the rest of the country during the forecast period.

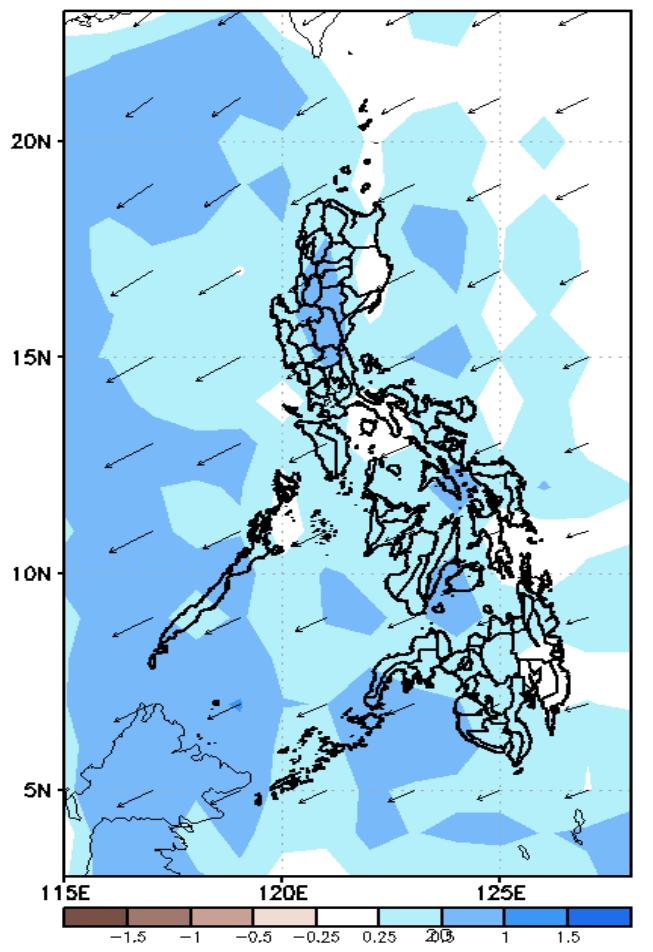
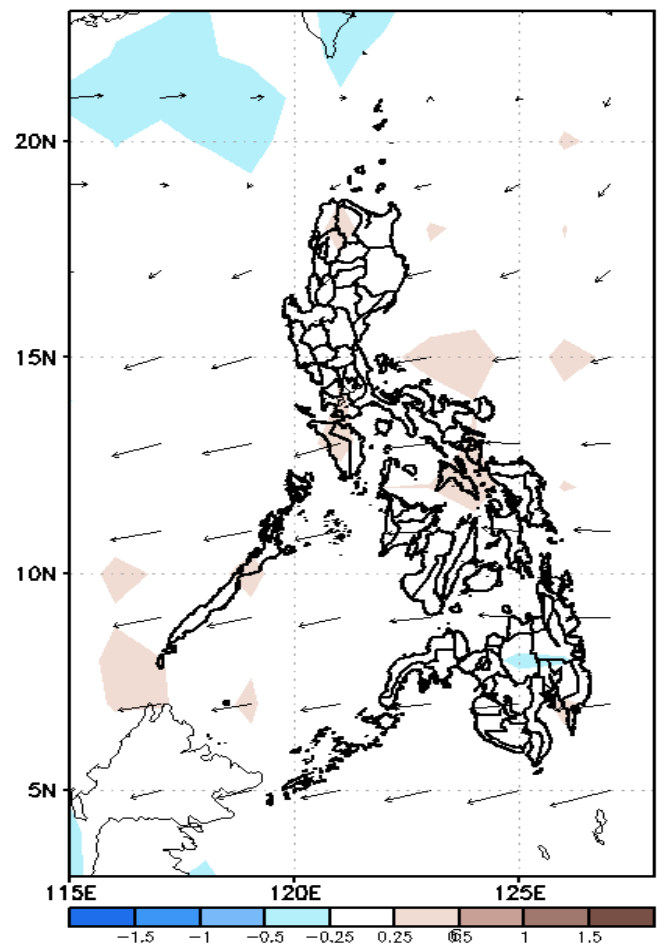
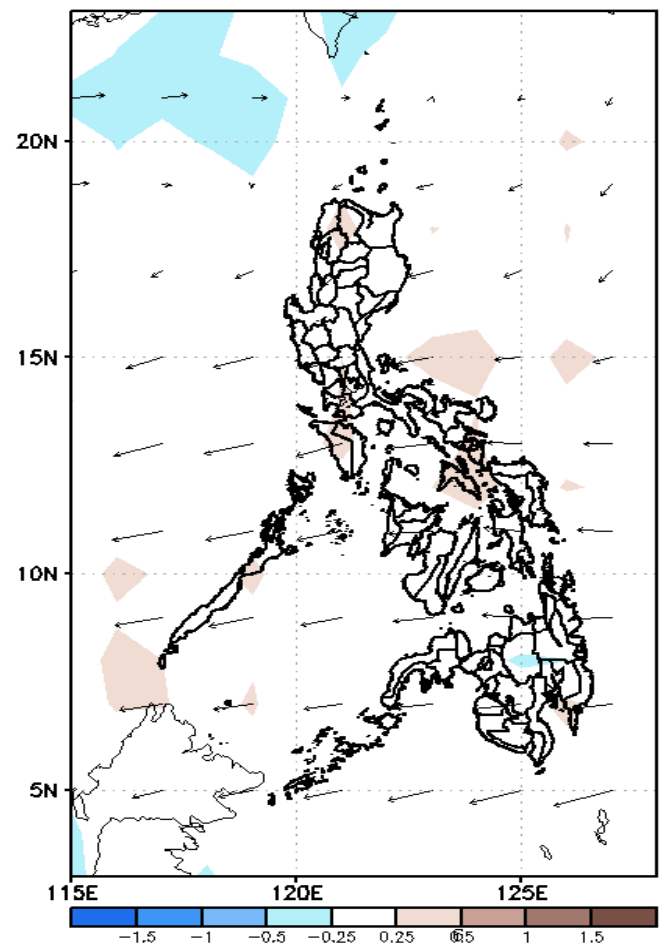
GEFS Week-2 Forecasts: Divergence & Wind Anomaly

Week 2: June 29-Jul 05, 2020

GEFS Week-2 850-hPa Divergence and Wind Anom
Valid: 20200629 - 20200705

GEFS Week-2 700-hPa Divergence and Wind Anom
Valid: 20200629 - 20200705

GEFS week-2 200-hPa Divergence and Wind Anom
Valid: 20200629 - 20200705

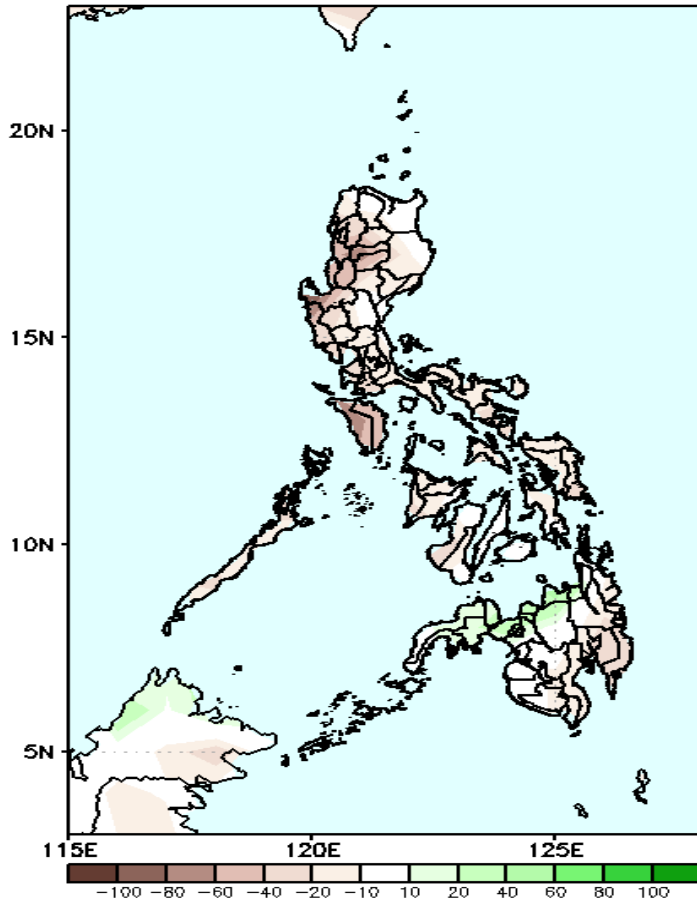


Upper level (200 hPa) Divergence suggest likelihood of precipitation in most parts of the country. Southwest Monsoon affecting central and northern Luzon while easterlies affecting most parts of the country during the forecast period.

Precipitation Anomaly and Exceedance Probability > 25/50 mm

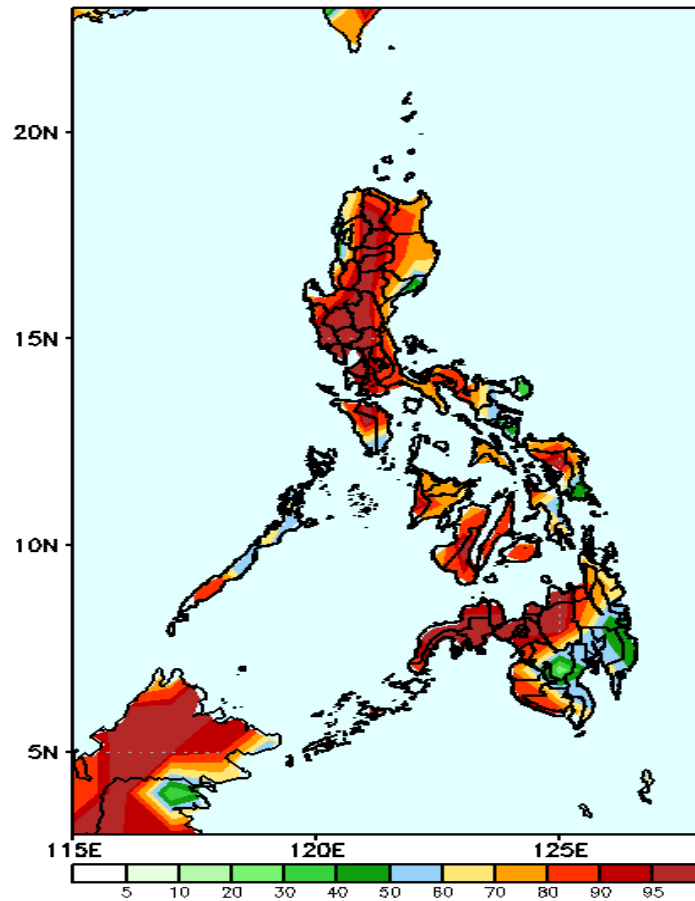
Week 2: June 29- Jul 05, 2020

GEFS Week-2 Precip Anomaly
Valid: 20200629 - 20200705



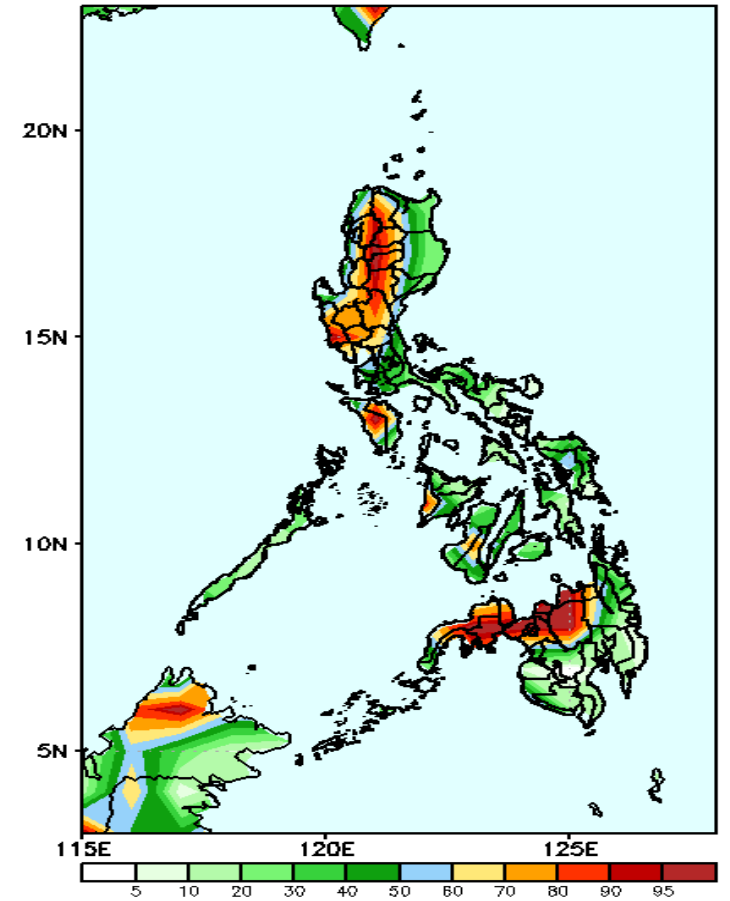
Rainfall deficit of 10-60mm is expected in most parts of the country during the forecast period.

GEFS Week-2 Exceedance Prob. > 25mm
Valid: 20200629 - 20200705



High probability of rainfall to exceed 25mm in most parts of the country except in Bicol Region and southern parts of Mindanao during the forecast period.

GEFS Week-2 Exceedance Prob. > 50mm
Valid: 20200629 - 20200705

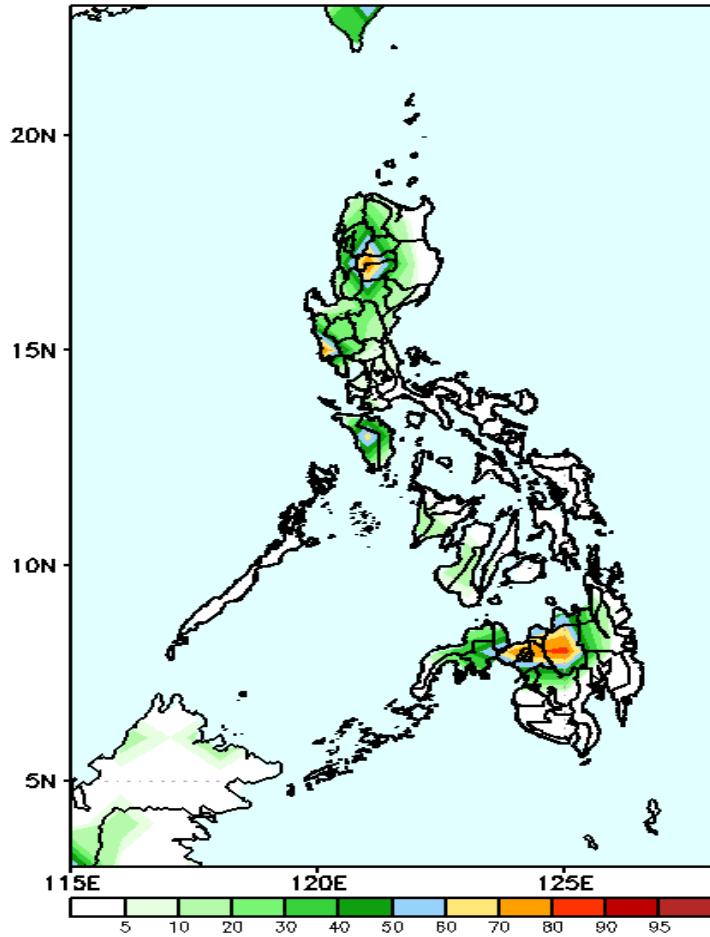


High probability of rainfall to exceed 50mm in most parts of western Luzon, Mindoro and in northern Mindanao and Zamboanga Peninsula while less likely for the rest of the country during the forecast period.

Exceedance Probability > 100/150/200 mm

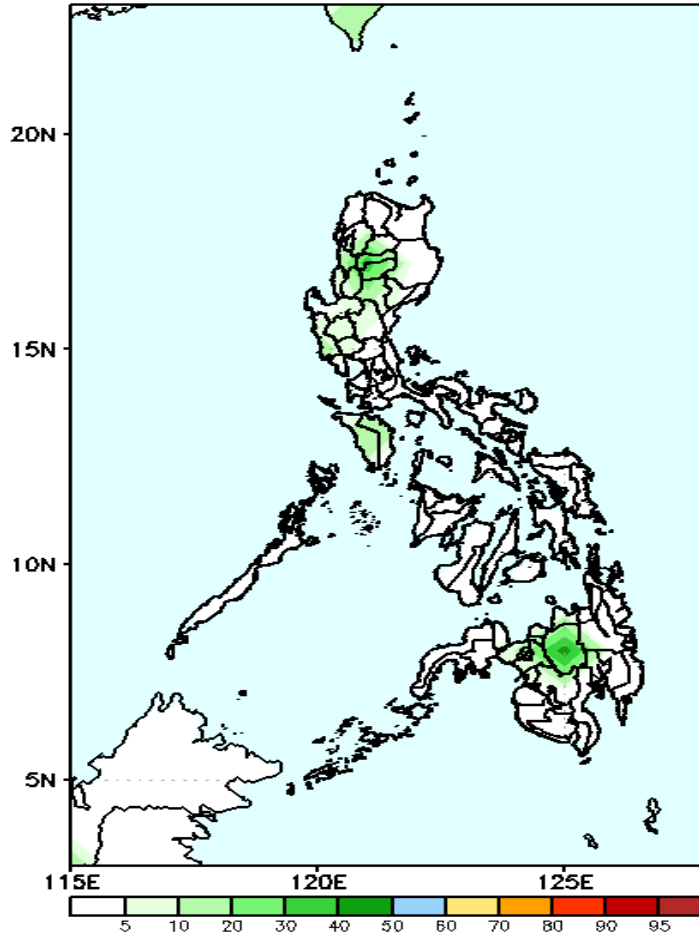
Week 2: June 29- Jul 05, 2020

GEFS Week-2 Exceedance Prob. > 100mm
Valid: 20200629 - 20200705



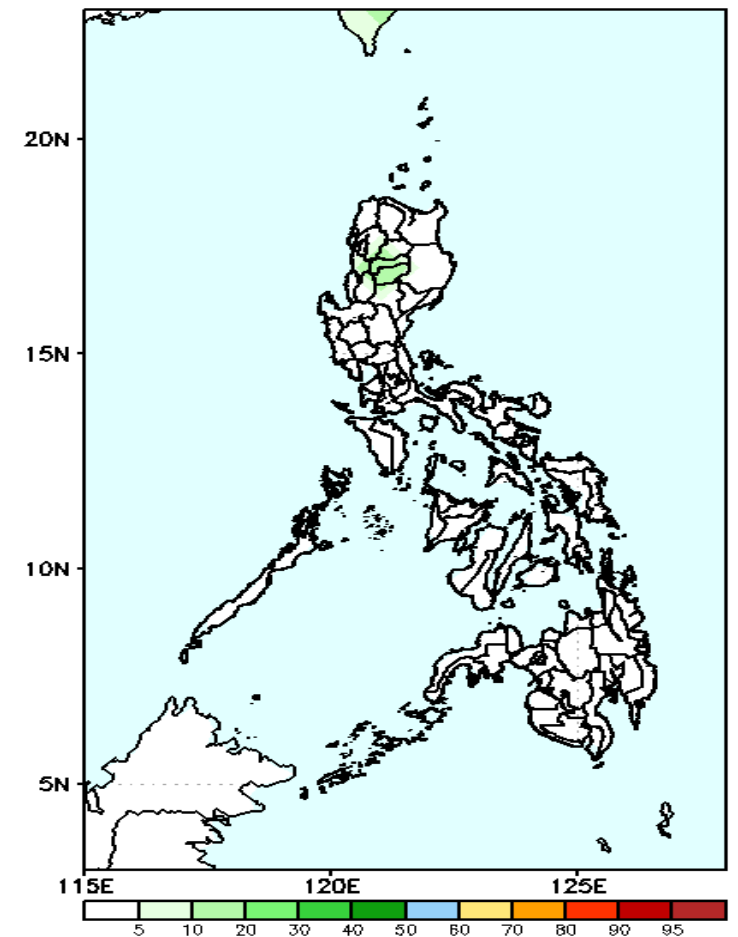
30-80% probability of rainfall to exceed 100mm in Cordillera Region and northern Mindanao while less likely for the rest of the country during the forecast period.

GEFS Week-2 Exceedance Prob. > 150mm
Valid: 20200629 - 20200705



Less probability of rainfall to exceed 150mm in most parts of the country during the forecast period.

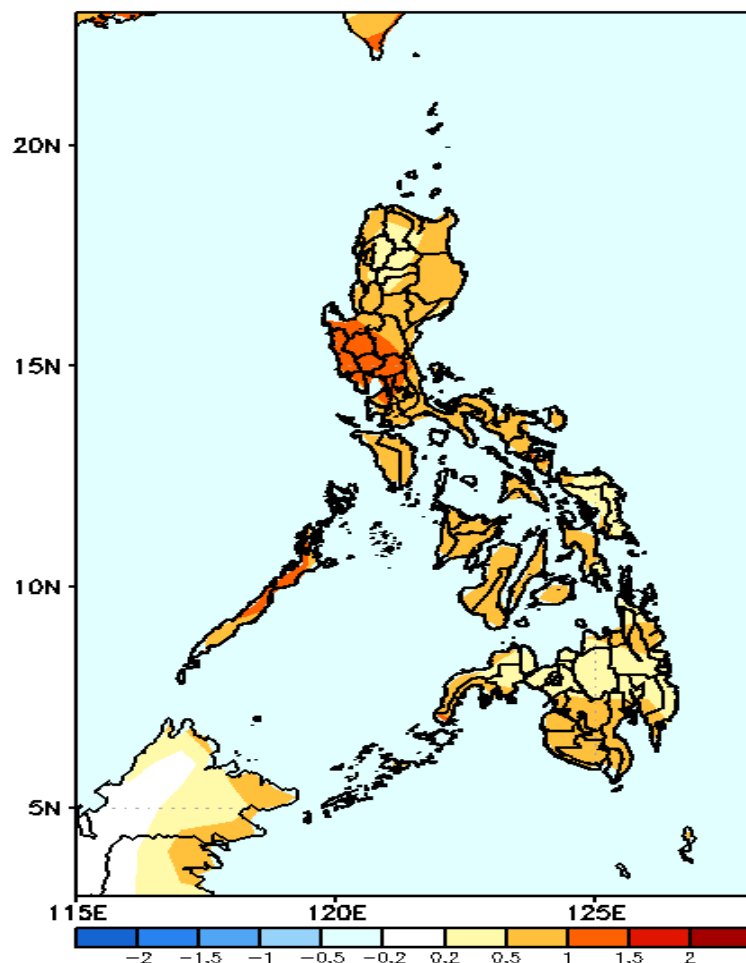
GEFS Week-2 Exceedance Prob. > 200mm
Valid: 20200629 - 20200705



Less probability of rainfall to exceed 200mm in most parts of the country during the forecast period.

GEFS Week-1 & 2 Forecasts: T2m Anomaly

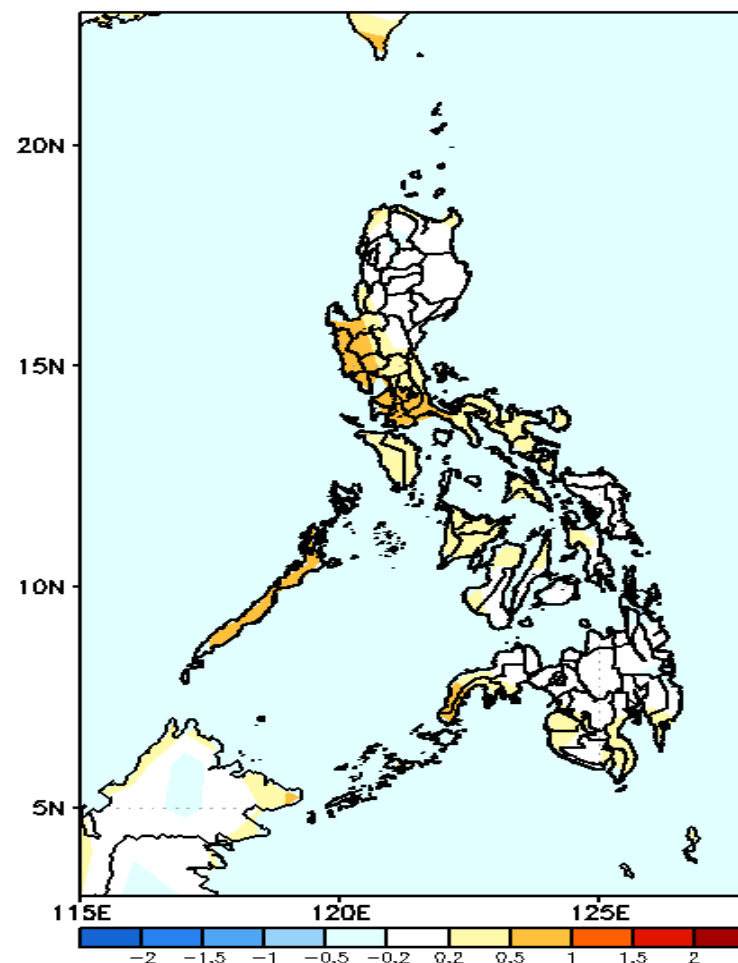
GEFS Week-1 T2m Anomaly
Valid: 20200622 - 20200628



2m Temperature Week 1: June 22-28, 2020

Slightly warmer to warmer than average surface air temperature will likely experience in most parts of Luzon while average to slightly warmer surface air temperature is expected for the rest of the country during the forecast period.

GEFS Week-2 T2m Anomaly
Valid: 20200629 - 20200705



2m Temperature Week 2: June 29- Jul 05, 2020

Average to slightly warmer than average surface air temperature will likely experience in most parts of the country during the forecast period.