



USAID
FROM THE AMERICAN PEOPLE



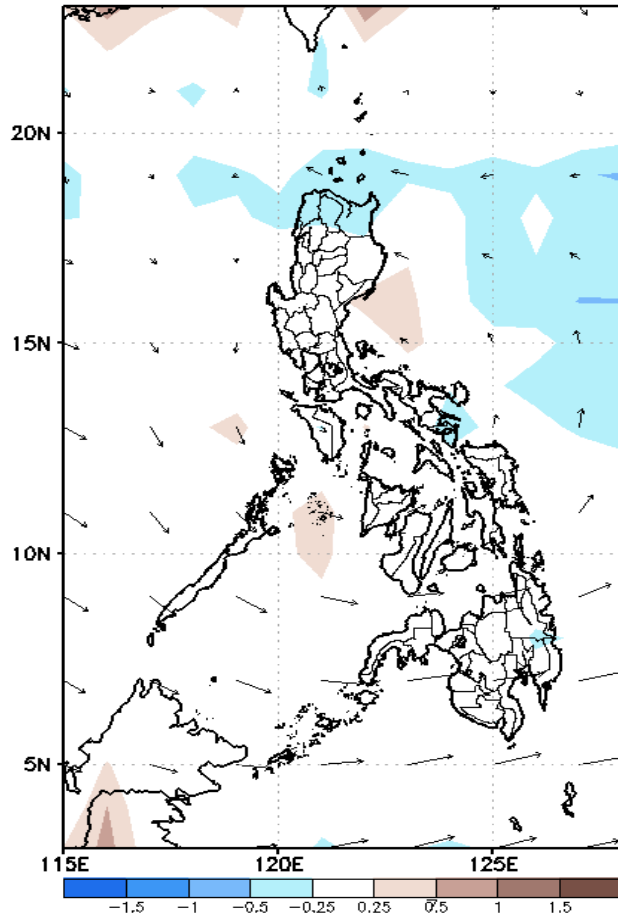
Week 1 & Week 2 Forecast for the Philippines using GEFS Model



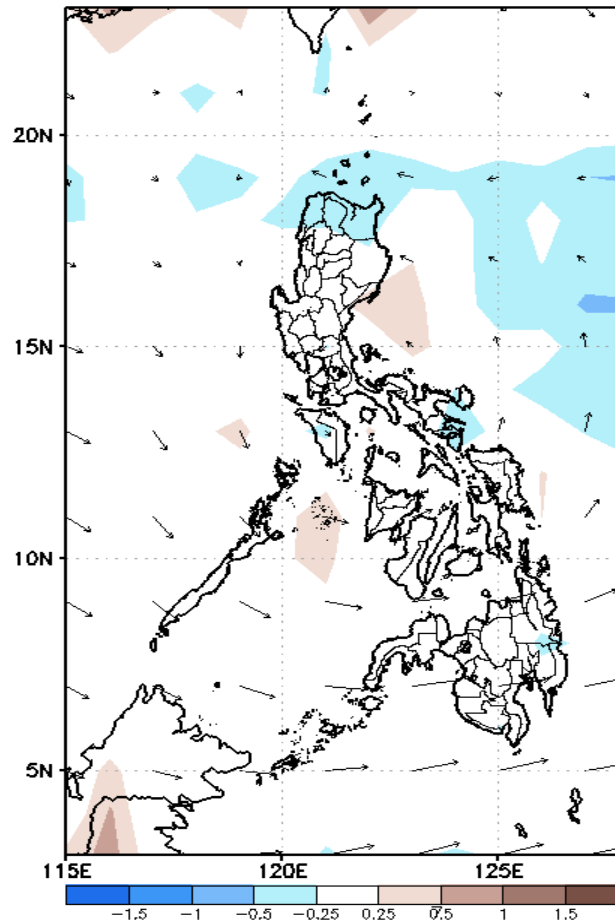
GEFS Week-1 Forecasts: Divergence & Wind Anomaly

Week 1: March 23 – March 29, 2020

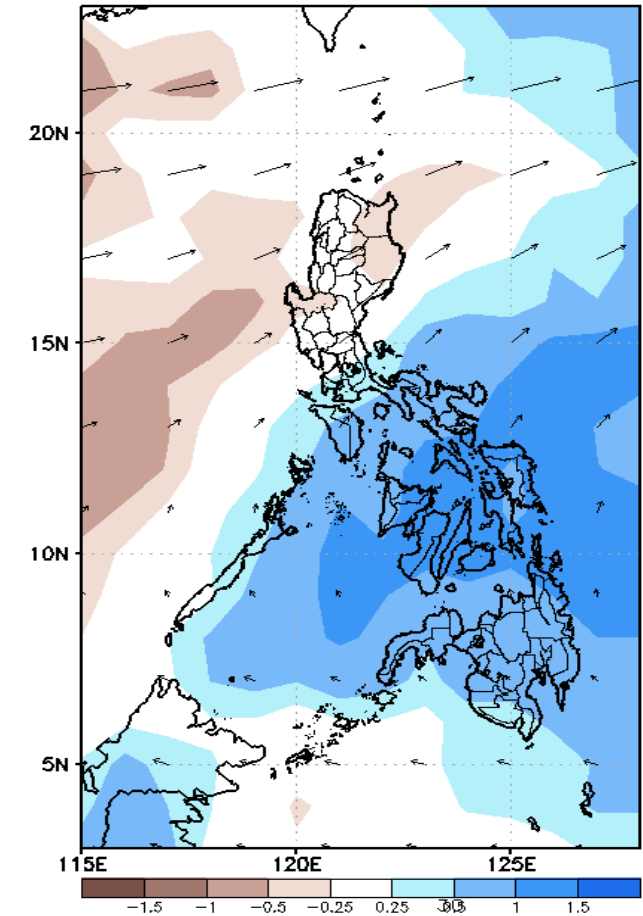
GEFS Week-1 850-hPa Divergence and Wind Anom
Valid: 20200323 – 20200329



GEFS Week-1 700-hPa Divergence and Wind Anom
Valid: 20200323 – 20200329



GEFS Week-1 200-hPa Divergence and Wind Anom
Valid: 20200323 – 20200329

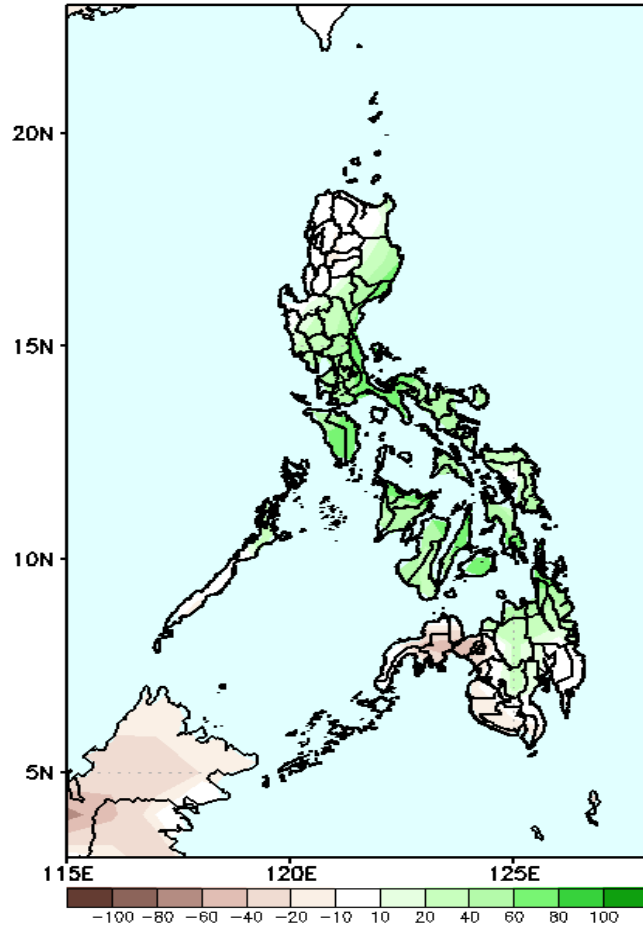


Low level (850 hPa) Divergence show likelihood of precipitation in southern Luzon, Visayas and Mindanao. Easterlies affecting most parts of the country. Moreover, a cyclonic circulation will likely form and move towards Visayas or southern Luzon during the forecast period.

Precipitation Anomaly and Exceedance Probability > 25/50 mm

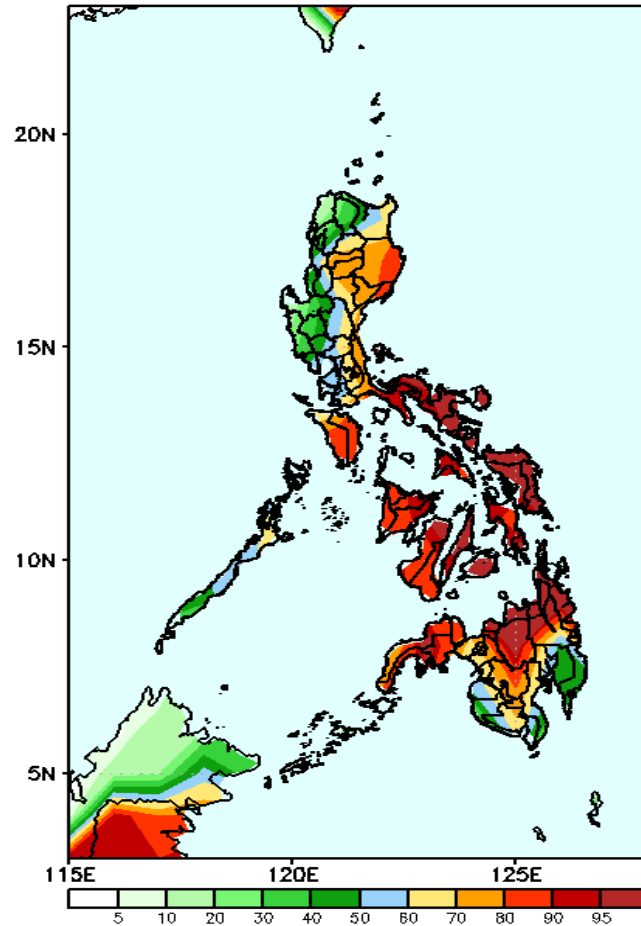
Week 1: March 23 – March 29, 2020

GEFS Week-1 Precip Anomaly
Valid: 20200323 – 20200329



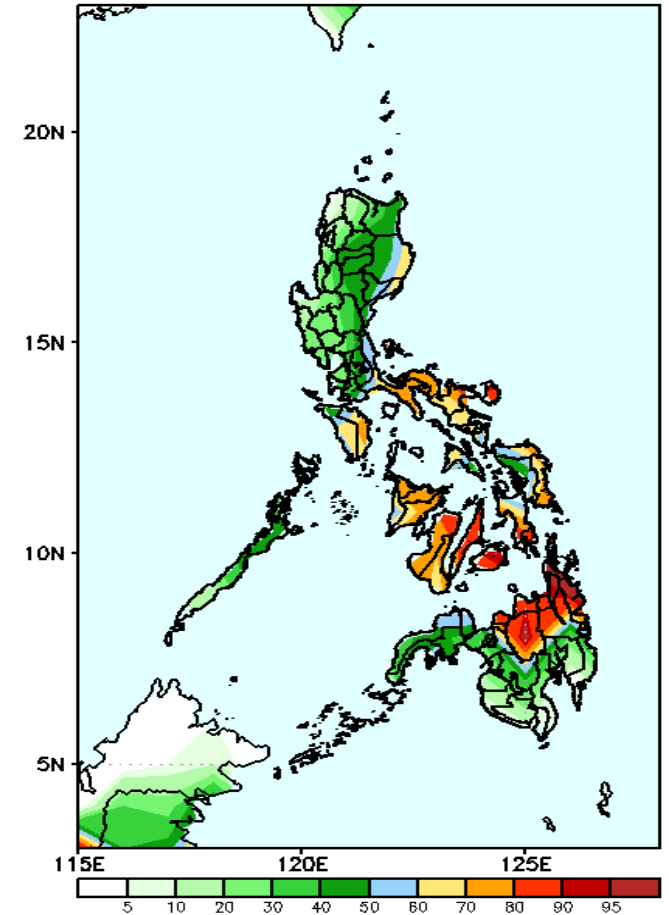
Increase of rainfall up to 70mm is expected in eastern and southern Luzon, Visayas and northern Mindanao while the rest of the country will likely to have rainfall deficit of up to 30mm rainfall during the forecast period.

GEFS Week-1 Exceedance Prob. > 25mm
Valid: 20200323 – 20200329



High probability of rainfall to exceed 25mm in eastern and southern Luzon, Visayas and Mindanao (except in the southern part) while less likely for the rest of the country during the forecast period.

GEFS Week-1 Exceedance Prob. > 50mm
Valid: 20200323 – 20200329

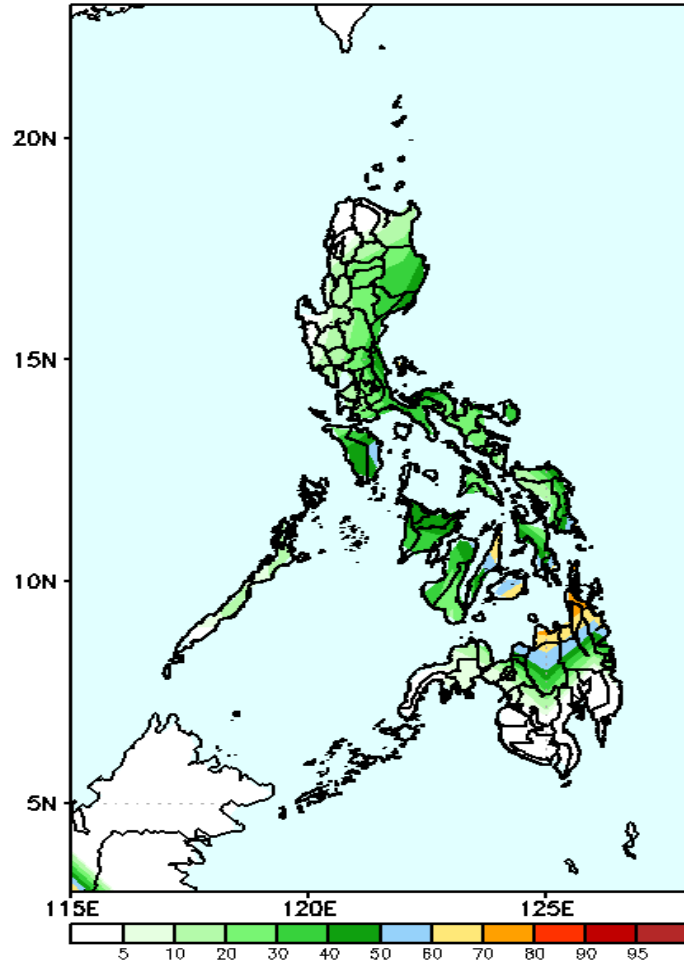


60-95% probability of rainfall to exceed 50mm in eastern Isabela, in Visayas and northern Mindanao while less likely for the rest of the country during the forecast period.

Exceedance Probability > 100/150/200 mm

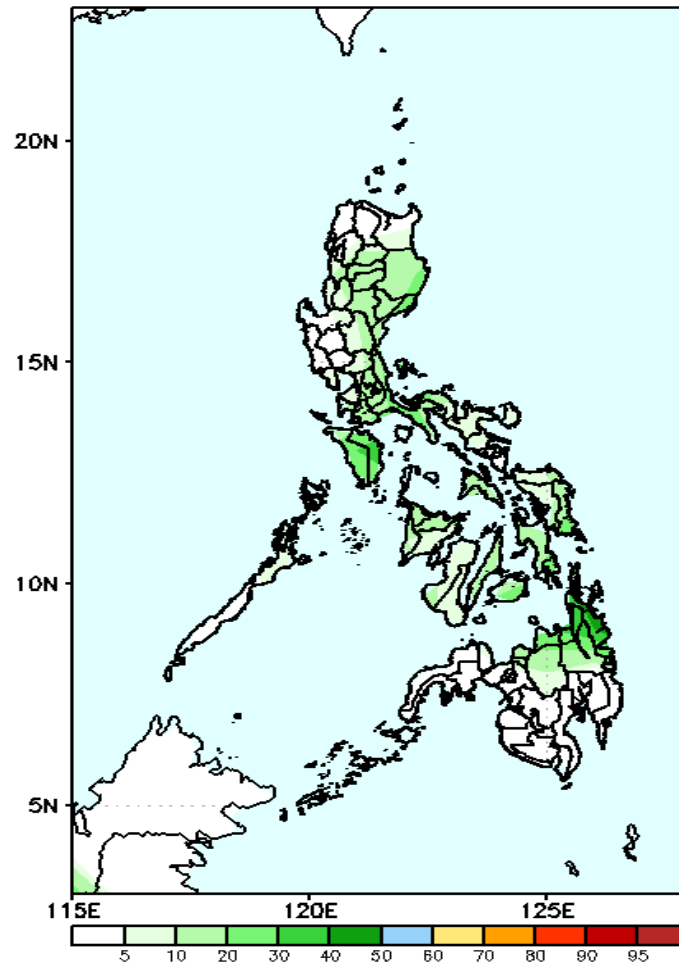
Week 1: March 23 – March 29, 2020

GEFS Week-1 Exceedance Prob. > 100mm
Valid: 20200323 – 20200329

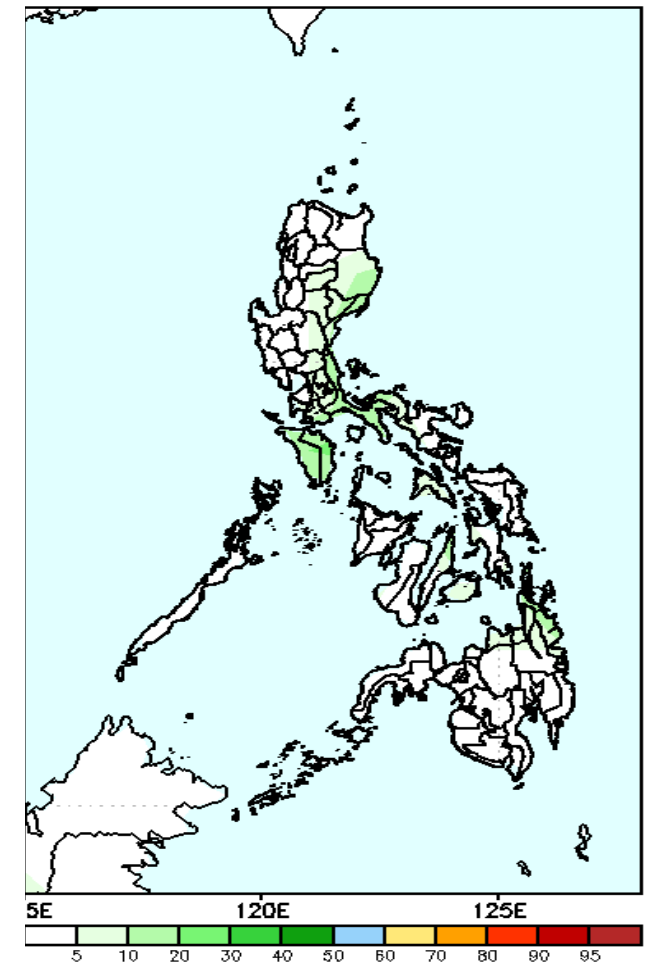


40-50% probability of rainfall to exceed 100 mm in eastern Luzon and Visayas, 60-80% probability in northern Mindanao and less probability for the rest of the country.

GEFS Week-1 Exceedance Prob. > 150mm S Week-1 Exceedance Prob. > 200mm
Valid: 20200323 – 20200329



Less probability of rainfall to exceed 150 mm in most parts of the country during the forecast period.



Less probability of rainfall to exceed 200 mm in most parts of the country during the forecast period.



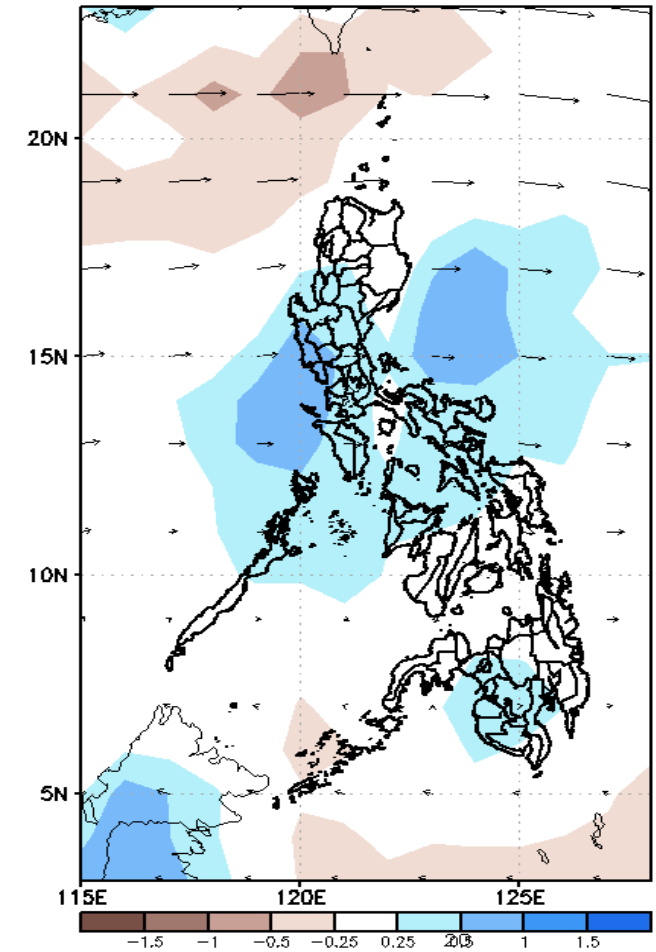
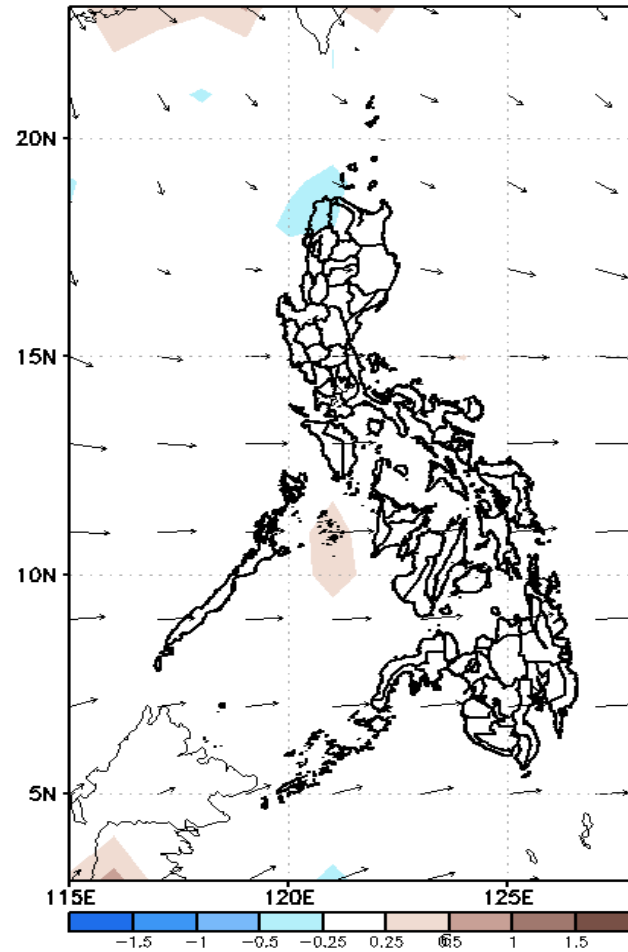
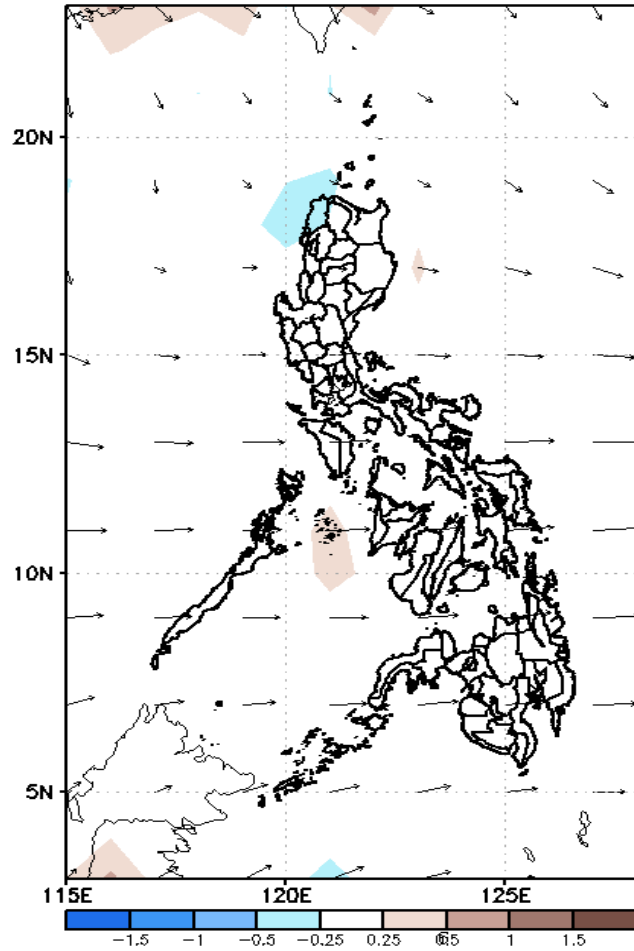
GEFS Week-2 Forecasts: Divergence & Wind Anomaly

Week 2: March 30 – April 05, 2020

GEFS Week-2 850-hPa Divergence and Wind Anom
Valid: 20200330 – 20200405

GEFS Week-2 700-hPa Divergence and Wind Anom
Valid: 20200330 – 20200405

GEFS week-2 200-hPa Divergence and Wind Anom
Valid: 20200330 – 20200405

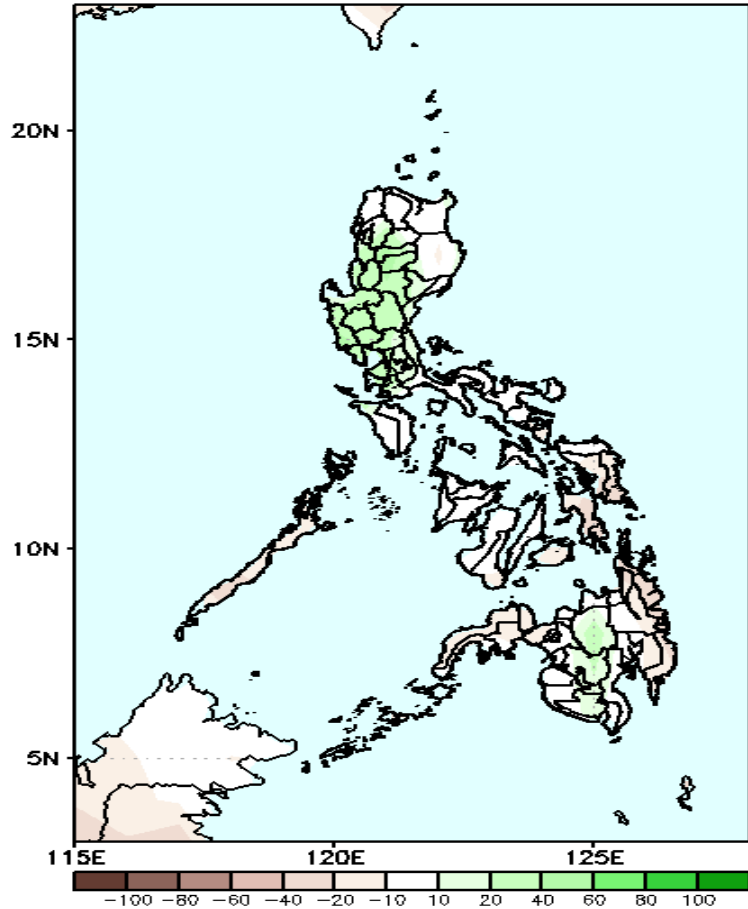


Low level (850 hPa) Divergence show likelihood of precipitation due to localized thunderstorm in western Luzon and western Mindanao . Easterlies affecting most parts of the country during the forecast period.

Precipitation Anomaly and Exceedance Probability > 25/50 mm

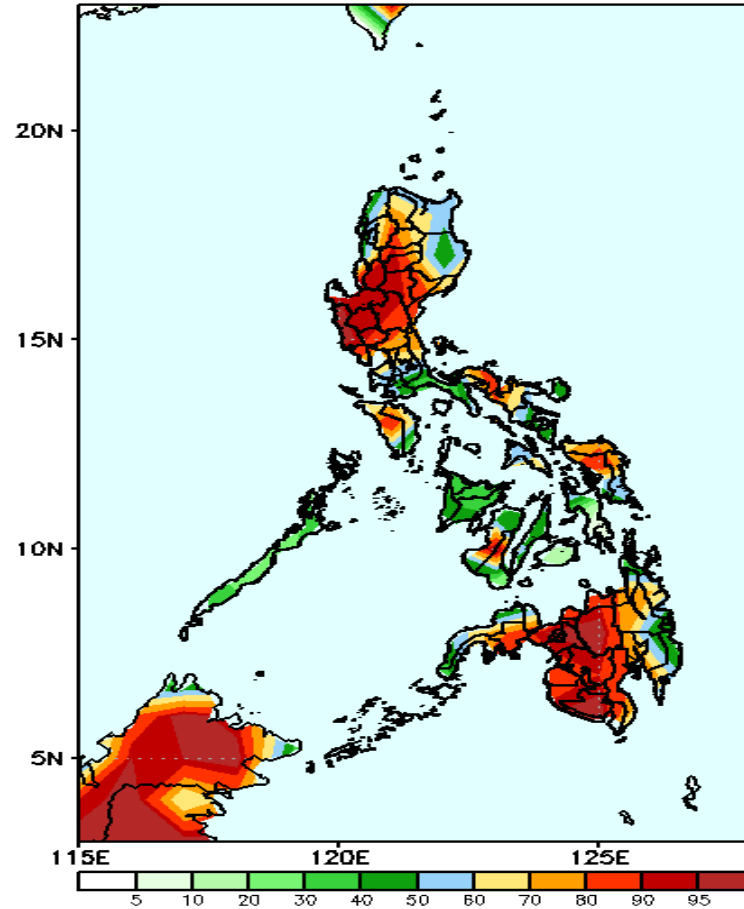
Week 2: March 30 – April 05, 2020

GEFS Week-2 Precip Anomaly
Valid: 20200330 – 20200405



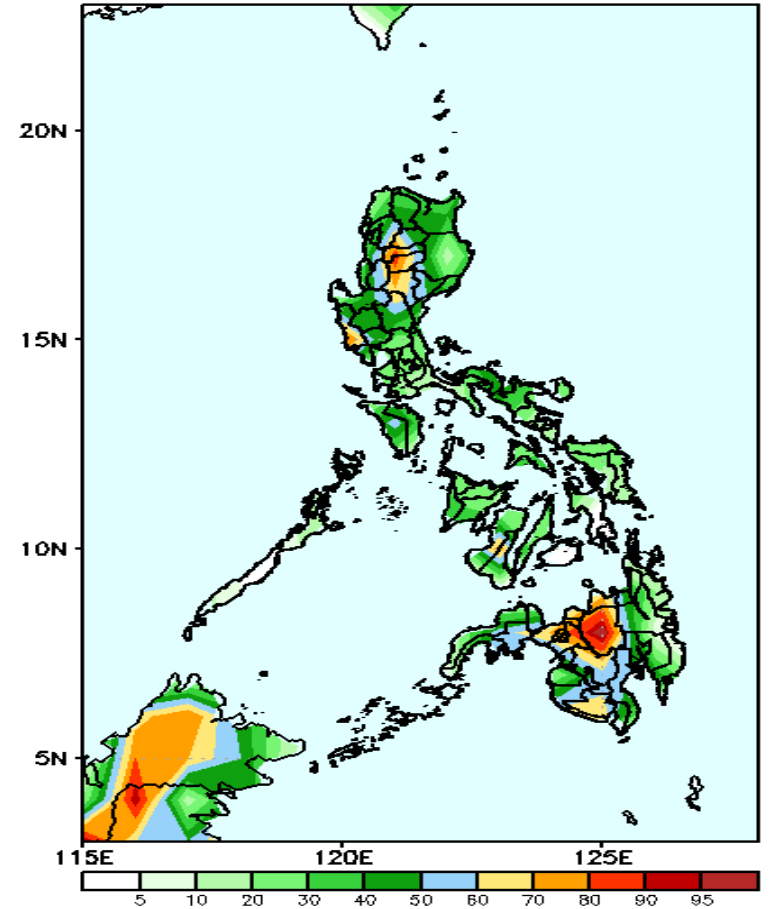
Rainfall deficit of 20-40 mm is most likely in most parts of Visayas and Mindanao while Luzon is expected to have an increase of up to 60 mm rainfall during the forecast period.

GEFS Week-2 Exceedance Prob. > 25mm
Valid: 20200330 – 20200405



High probabilities for rainfall exceeding 25mm in most parts of Luzon and Mindanao, and in eastern Visayas while less probability for the rest of the country during the forecast period.

GEFS Week-2 Exceedance Prob. > 50mm
Valid: 20200330 – 20200405

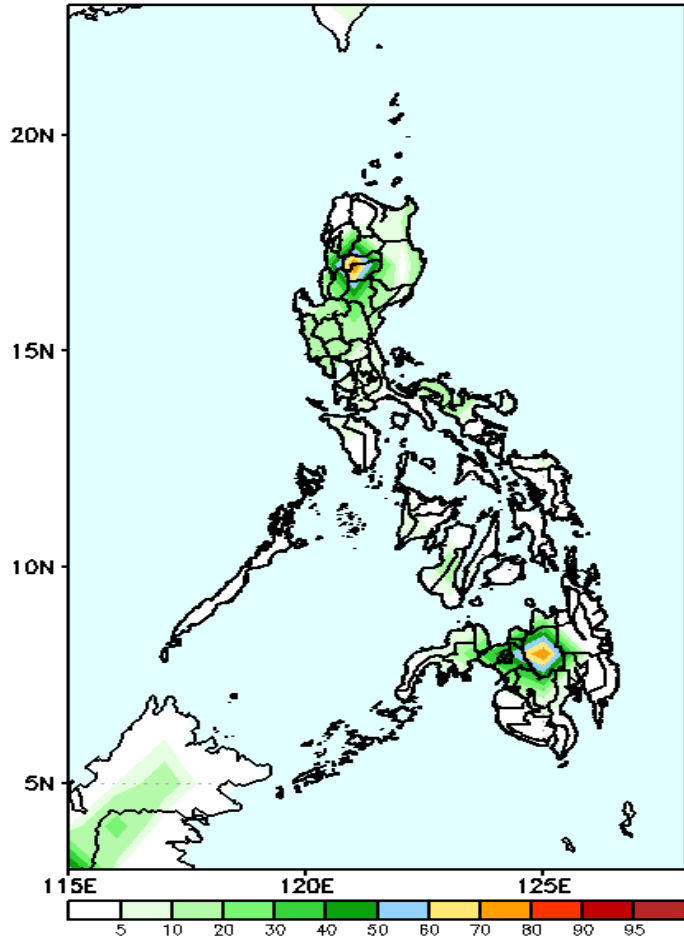


High probabilities for rainfall exceeding 50 mm in CAR and northern Mindanao while 40-60% probability for the rest of the country during the forecast period.

Exceedance Probability > 100/150/200 mm

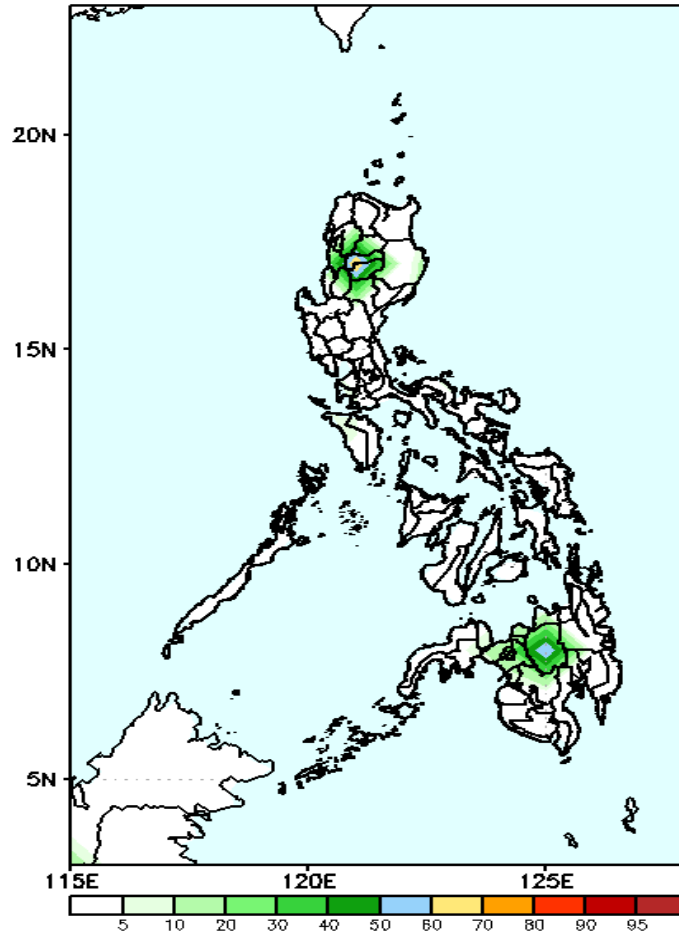
Week 2: March 30 – April 05, 2020

GEFS Week-2 Exceedance Prob. > 100mm
Valid: 20200330 – 20200405



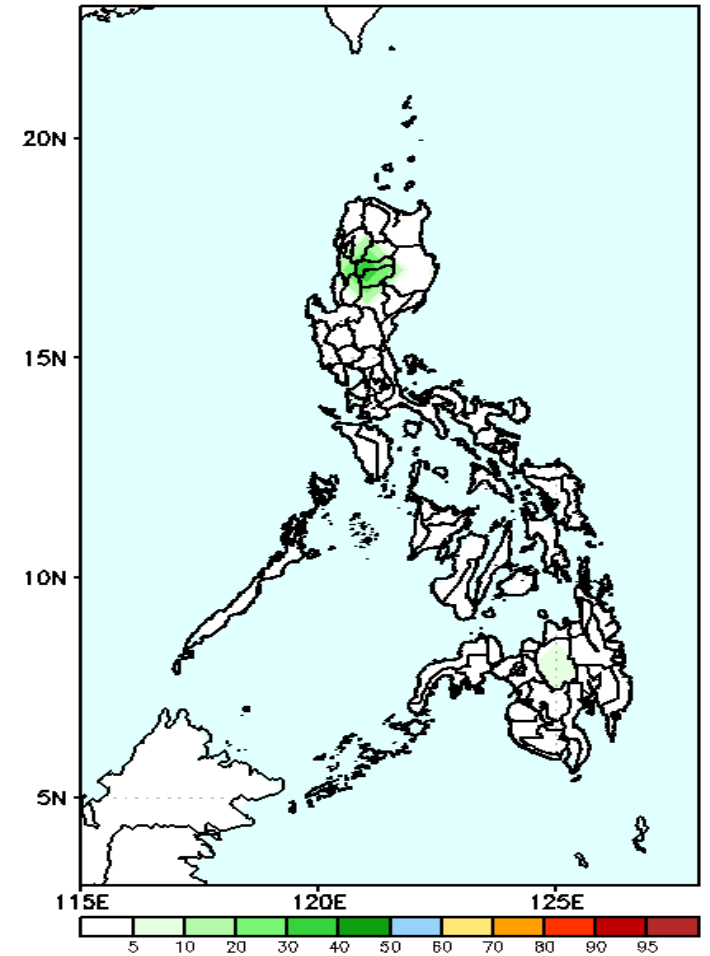
60-80% probabilities for rainfall exceeding 100 mm in CAR and northern Mindanao while less probability for the rest of the country during the forecast period.

GEFS Week-2 Exceedance Prob. > 150mm
Valid: 20200330 – 20200405



Less probability of rainfall to exceed 150 mm in most parts of the country during the forecast period.

GEFS Week-2 Exceedance Prob. > 200mm
Valid: 20200330 – 20200405

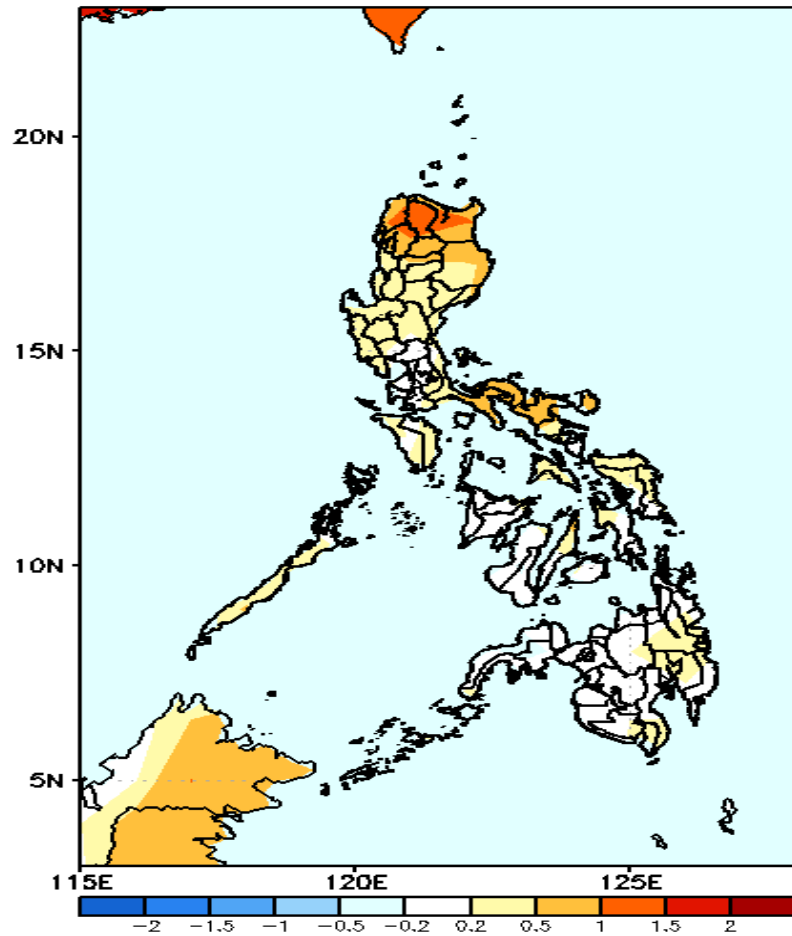


Less probability of rainfall to exceed 200 mm in most parts of the country during the forecast period.



GEFS Week-1 & 2 Forecasts: T2m Anomaly

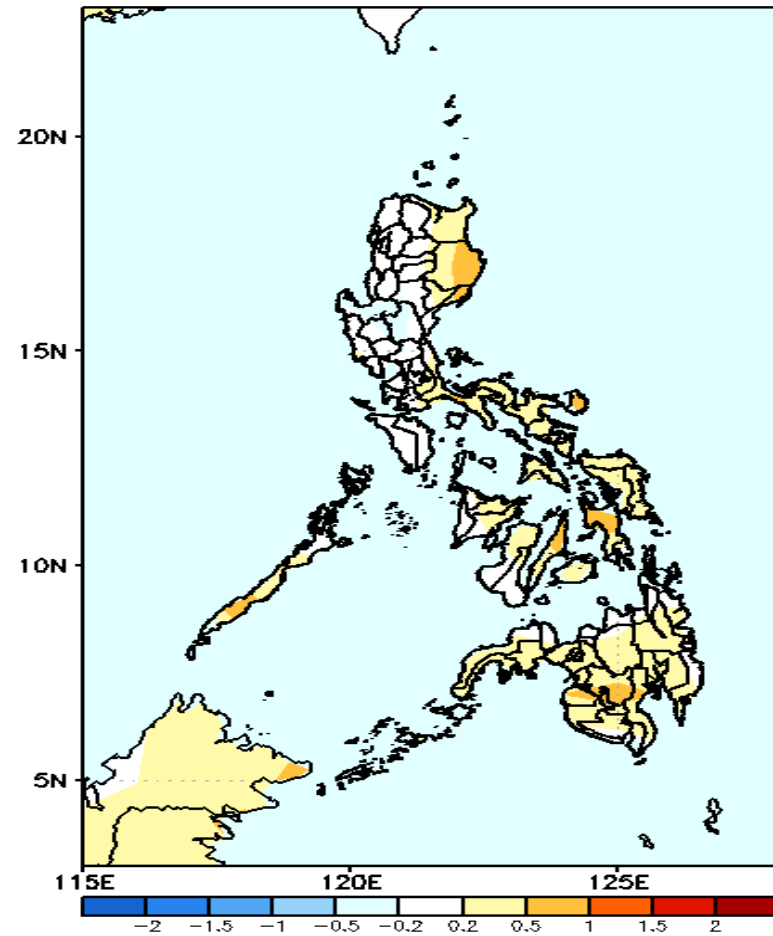
GEFS Week-1 T2m Anomaly
Valid: 20200323 – 20200329



2m Temperature Week 1: Mar 23 – Mar 29, 2020

Slightly warmer to warmer than average surface air temperature will likely experience in Luzon while near to slightly warmer than average surface air temperature is expected in most parts of the country during the forecast period

GEFS Week-2 T2m Anomaly
Valid: 20200330 – 20200405



2m Temperature Week 1: March 30 – April 05, 2020

Near to slightly warmer than average surface air temperature will likely experience in most parts of the country during the forecast period