



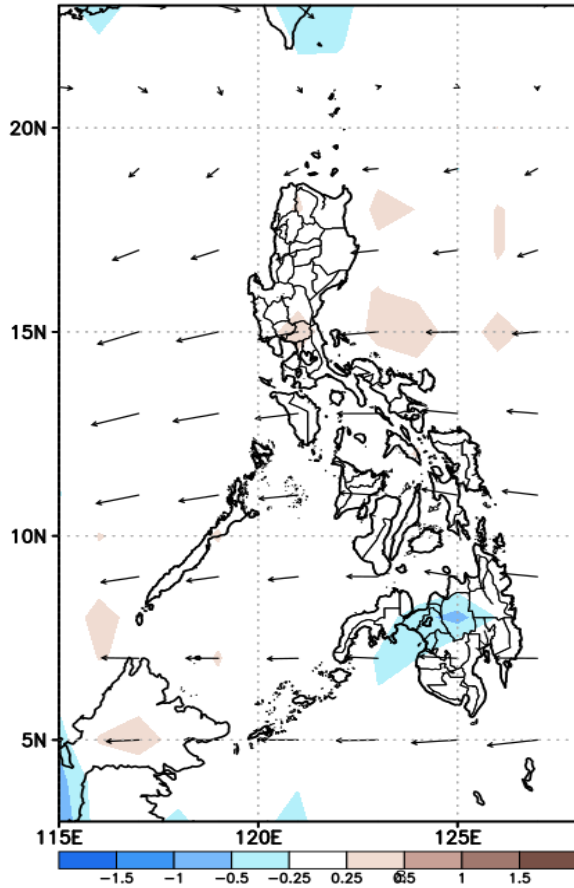
Week 1 & Week 2 Forecast for the Philippines using GEFS Model



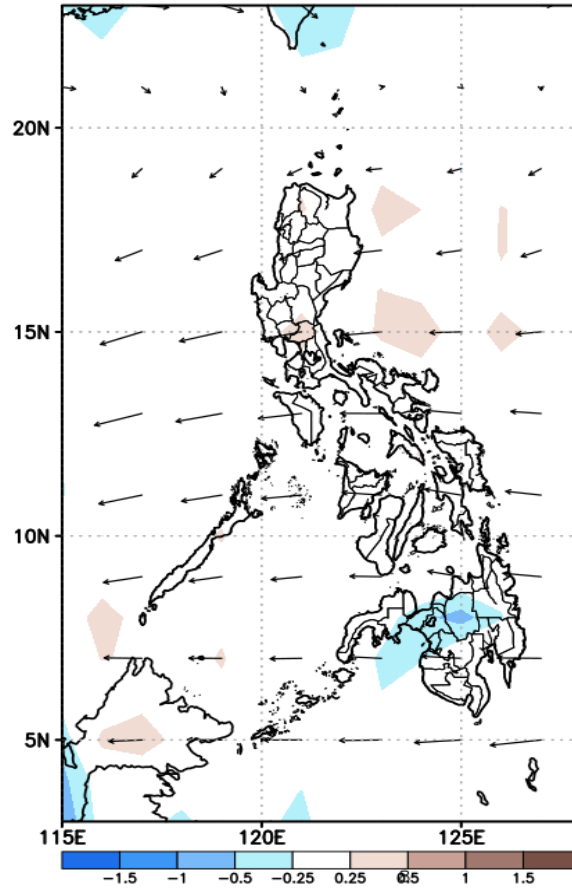
GEFS Week-1 Forecasts: Divergence & Wind Anomaly

Week 1: June 25-Jul 01, 2020

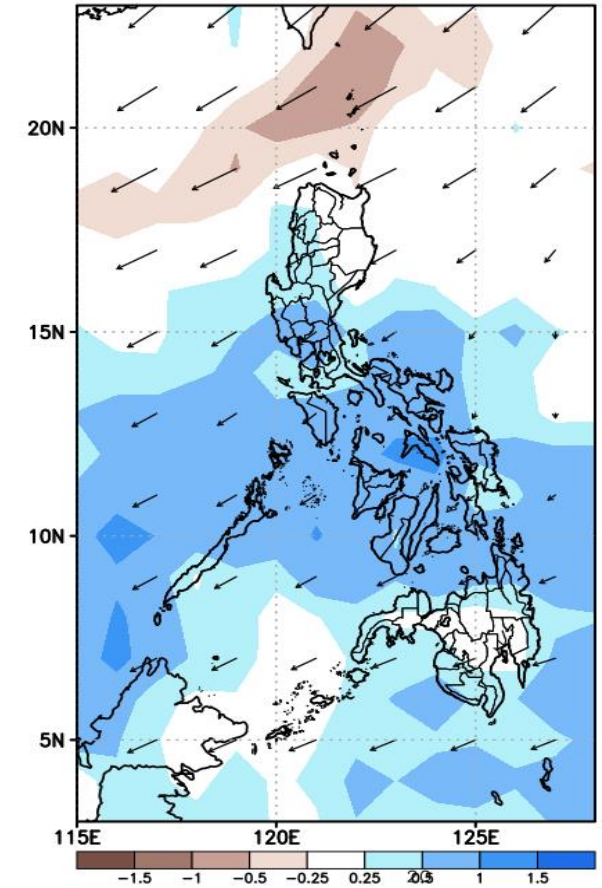
GEFS Week-1 850-hPa Divergence and Wind Anomaly
Valid: 20200625 - 20200701



GEFS Week-1 700-hPa Divergence and Wind Anomaly
Valid: 20200625 - 20200701



GEFS Week-1 200-hPa Divergence and Wind Anomaly
Valid: 20200625 - 20200701

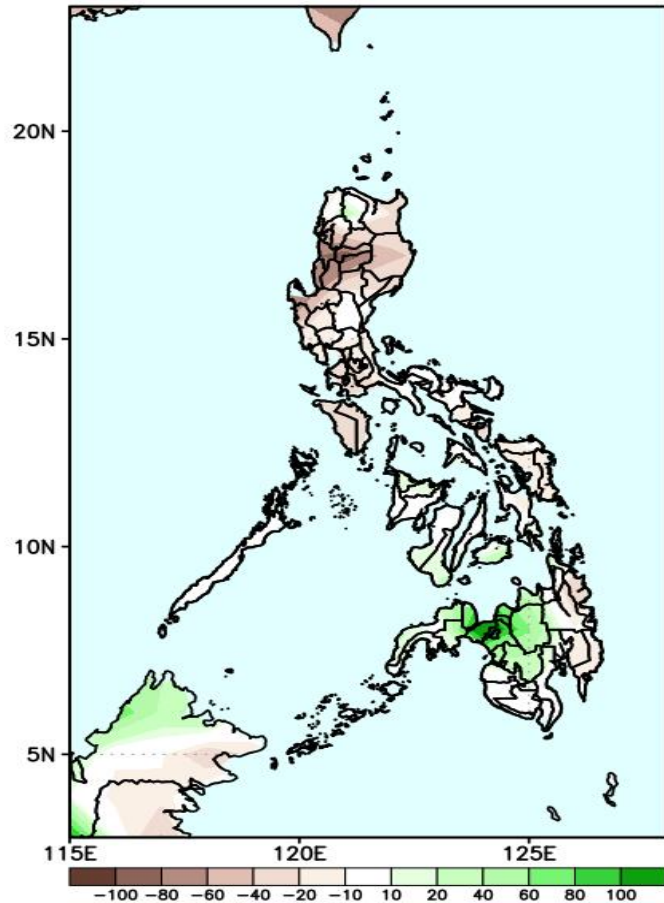


Upper level (200 hPa) Divergence suggest likelihood of precipitation in most parts of Luzon, most of Visayas and northern and southern Mindanao. Easterlies affecting most parts of the country during the forecast period.

Precipitation Anomaly and Exceedance Probability > 25/50 mm

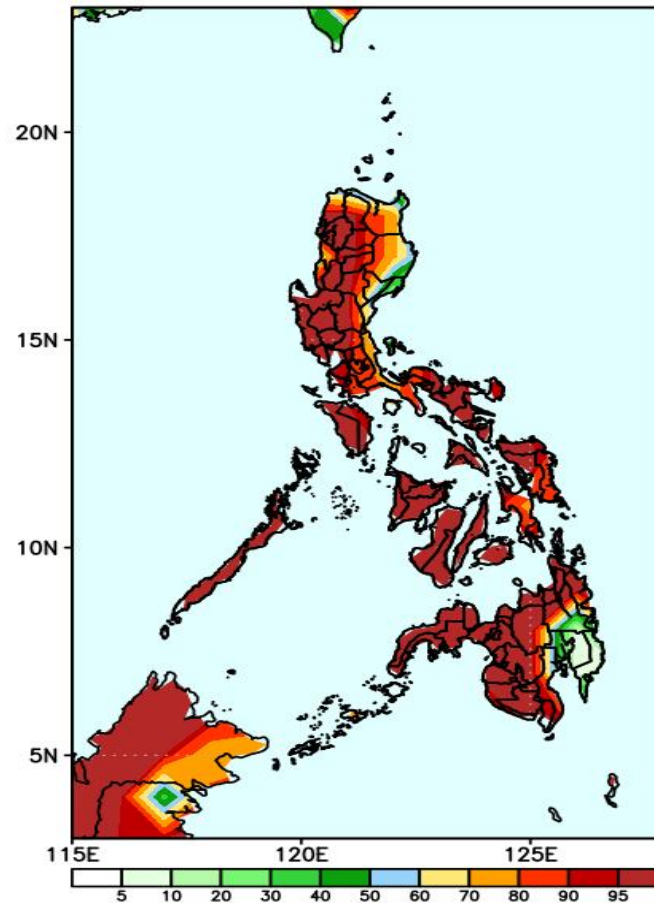
Week 1: June 25-Jul 01, 2020

GEFS Week-1 Precip Anomaly
Valid: 20200625 - 20200701



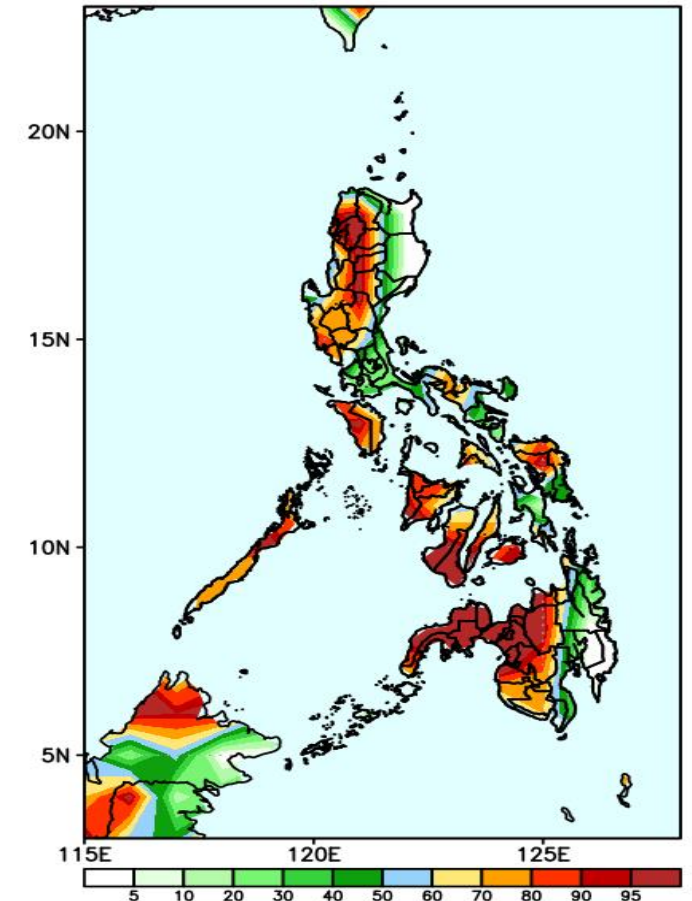
Rainfall deficit of 10-80mm in Luzon and Visayas is expected while 10-70mm increase of rainfall in Mindanao during the forecast period.

GEFS Week-1 Exceedance Prob. > 25mm
Valid: 20200625 - 20200701



High probability of rainfall to exceed 25mm in most parts of the country except in Davao Region during the forecast period.

GEFS Week-1 Exceedance Prob. > 50mm
Valid: 20200625 - 20200701

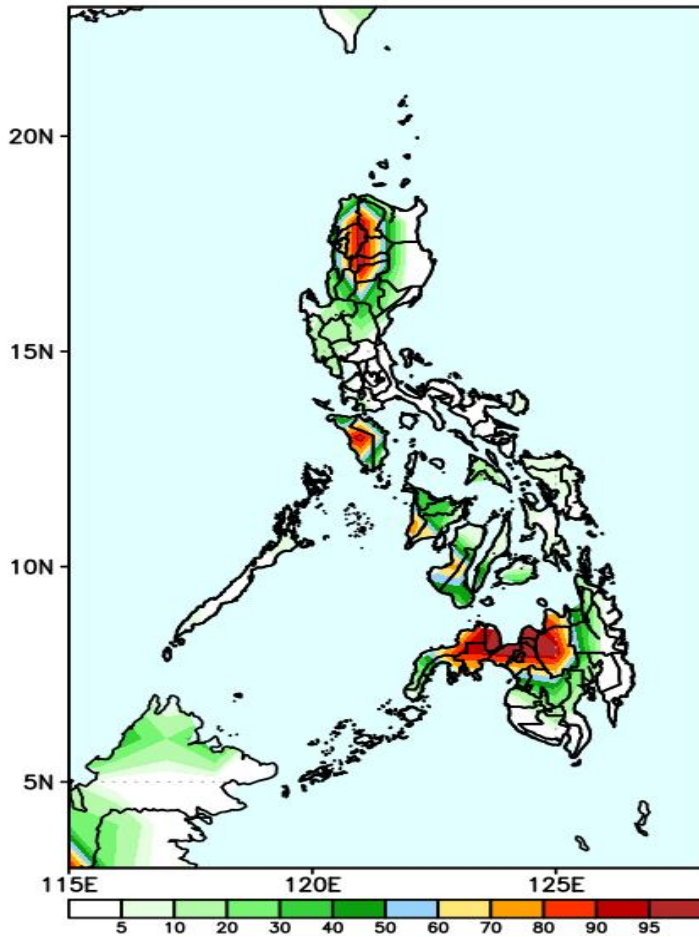


High probability of rainfall to exceed 50mm in most parts of western Luzon, Mindoro, Palawan, Samar provinces, western parts of Visayas and Mindanao while less likely for the rest of the country during the forecast period.

Exceedance Probability > 100/150/200 mm

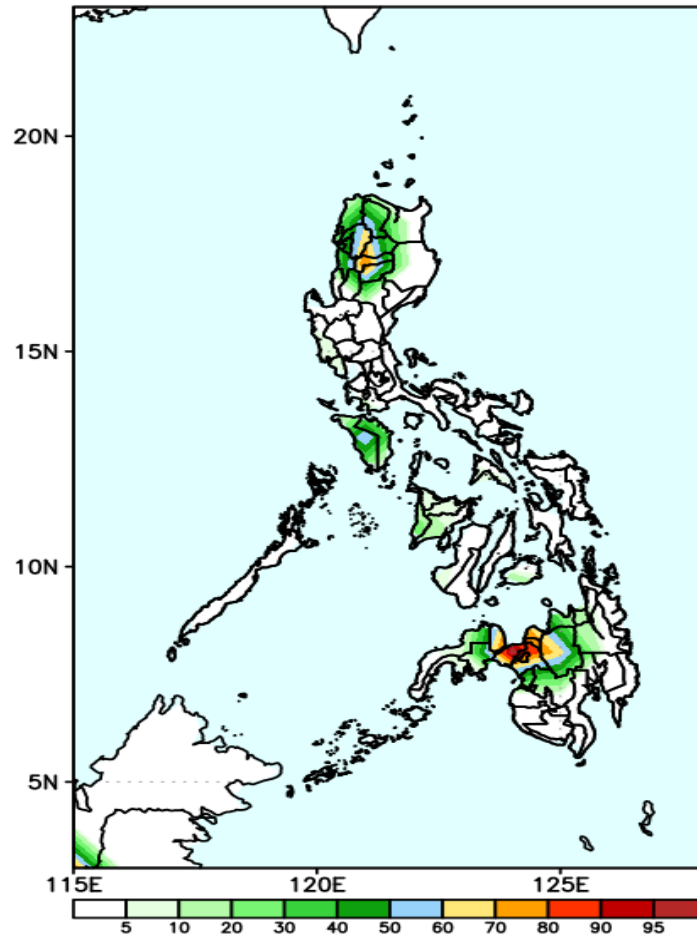
Week 1: June 25-Jul 01, 2020

GEFS Week-1 Exceedance Prob. > 100mm
Valid: 20200625 - 20200701



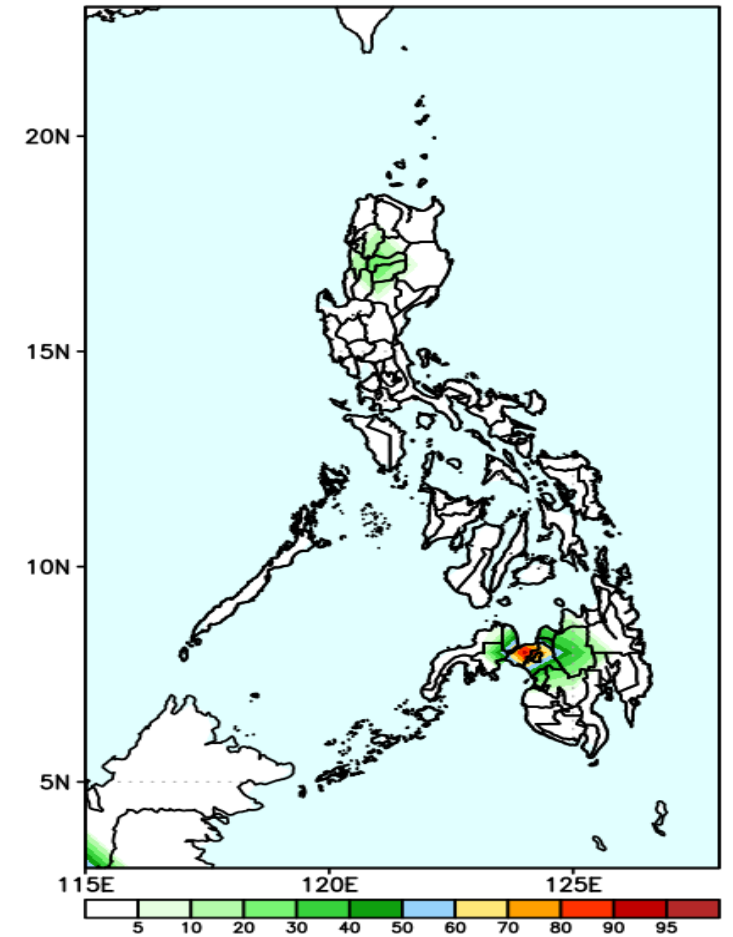
High probability of rainfall to exceed 100mm in Cordillera Region, Mindoro and in northern Mindanao while less likely for the rest of the country during the forecast period.

GEFS Week-1 Exceedance Prob. > 150mm
Valid: 20200625 - 20200701



30-85% probability of rainfall to exceed 100mm in Cordillera Region, Mindoro and in northern Mindanao while less likely for the rest of the country during the forecast period.

GEFS Week-1 Exceedance Prob. > 200mm
Valid: 20200625 - 20200701



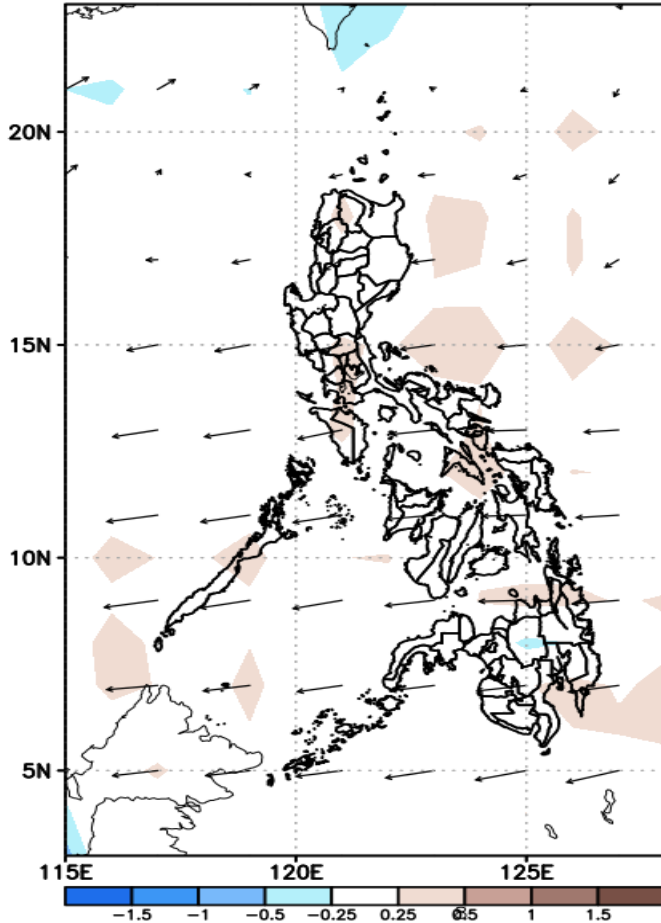
30-80% probability of rainfall to exceed 200mm in northern Mindanao while less likely for the rest of the country during the forecast period.



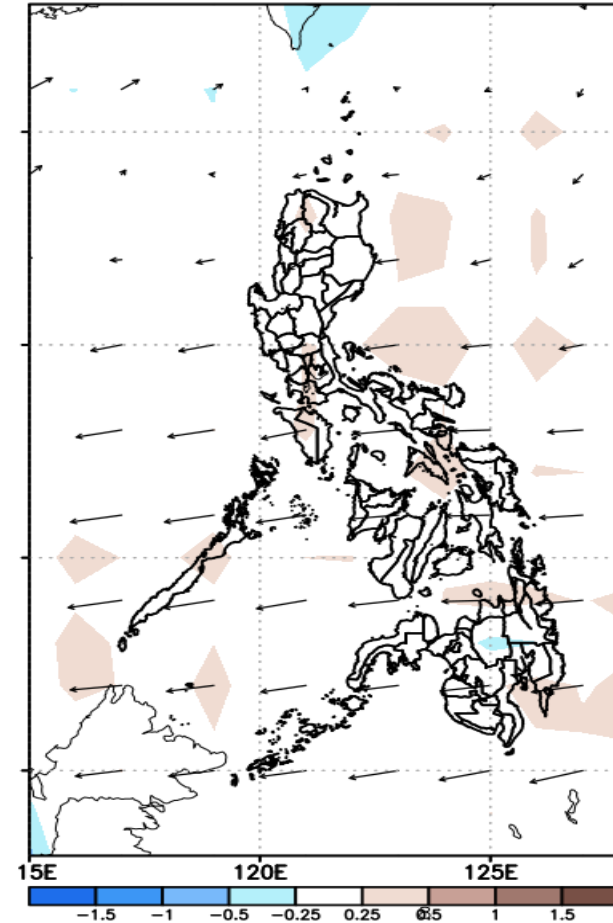
GEFS Week-2 Forecasts: Divergence & Wind Anomaly

Week 2: Jul 02-08, 2020

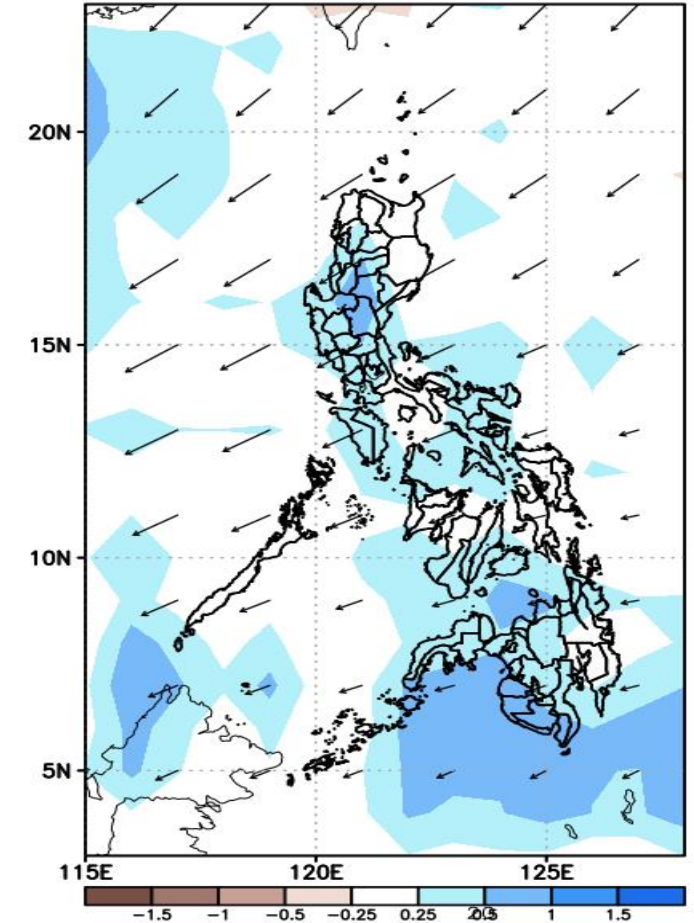
GEFS Week-2 850-hPa Divergence and Wind Anomaly
Valid: 20200702 - 20200708



GEFS Week-2 700-hPa Divergence and Wind Anomaly
Valid: 20200702 - 20200708



GEFS week-2 200-hPa Divergence and Wind Anomaly
Valid: 20200702 - 20200708

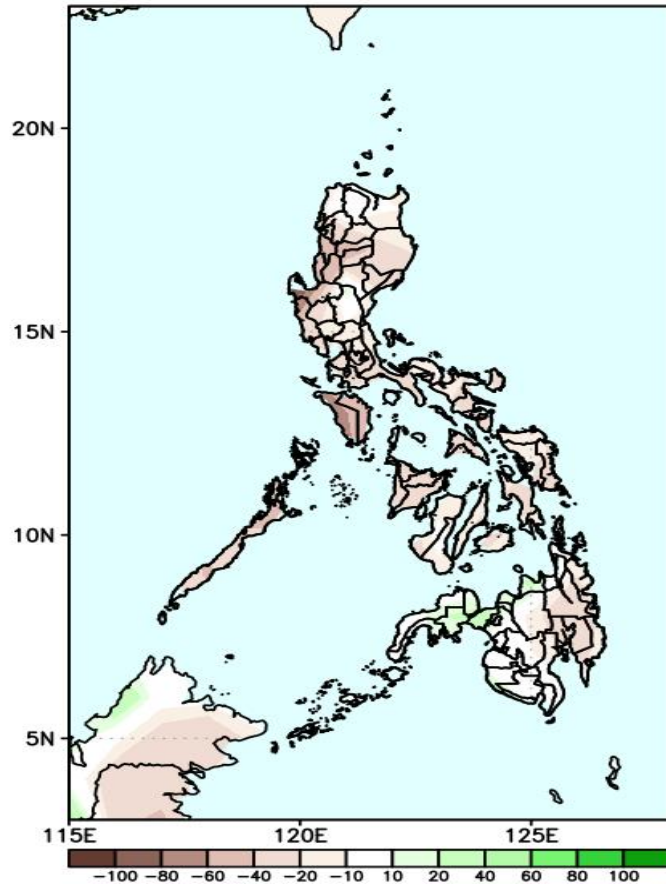


Upper level (200 hPa) Divergence suggest likelihood of precipitation in most parts of the country. Southwest Monsoon affecting extreme northern Luzon while easterlies affecting most parts of the country during the forecast period.

Precipitation Anomaly and Exceedance Probability > 25/50 mm

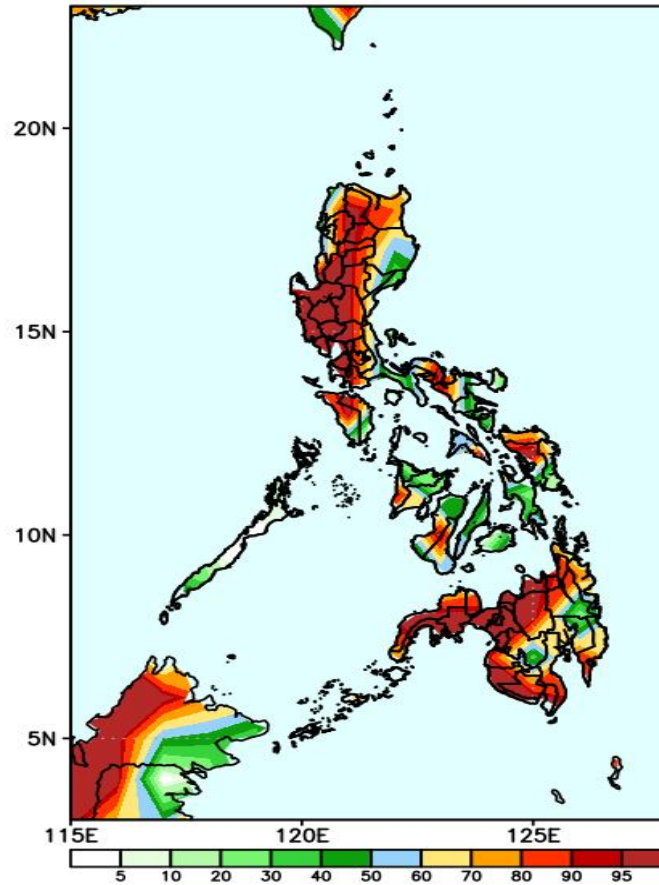
Week 2: Jul 02-08, 2020

GEFS Week-2 Precip Anomaly
Valid: 20200702 - 20200708



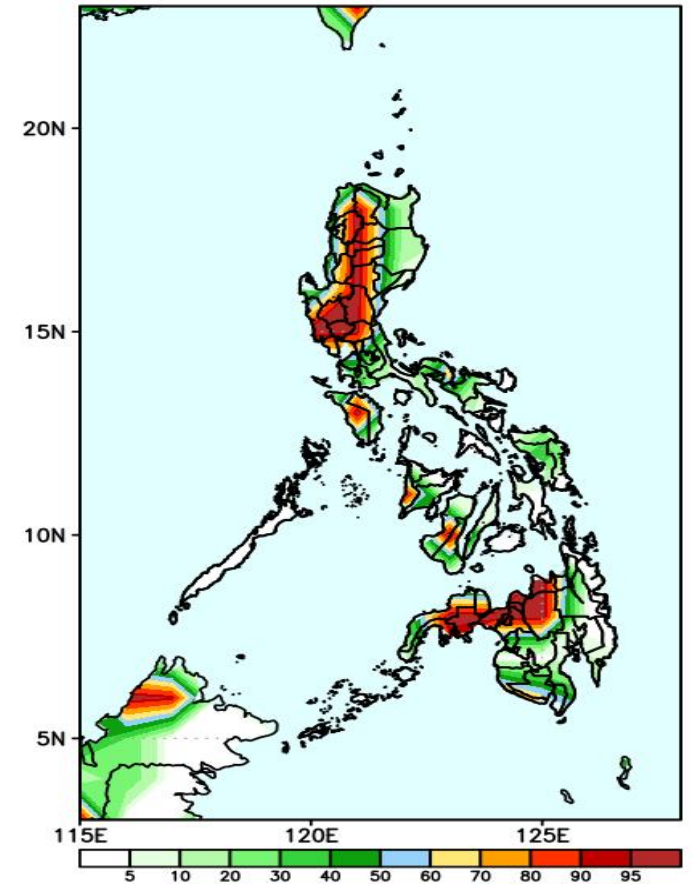
Rainfall deficit of up to 80mm is expected in most parts of the country during the forecast period.

GEFS Week-2 Exceedance Prob. > 25mm
Valid: 20200702 - 20200708



High probability of rainfall to exceed 25mm in most parts of the country except in Isabela and central parts of Visayas during the forecast period.

GEFS Week-2 Exceedance Prob. > 50mm
Valid: 20200702 - 20200708

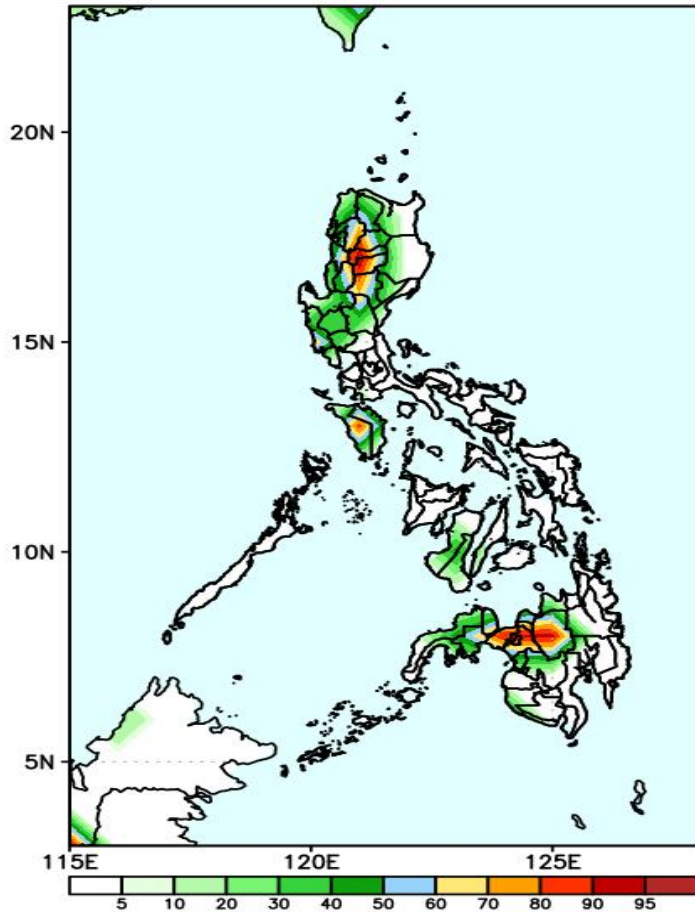


High probability of rainfall to exceed 50mm in most parts of western Luzon, Mindoro and in northern Mindanao and Zamboanga Peninsula while less likely for the rest of the country during the forecast period.

Exceedance Probability > 100/150/200 mm

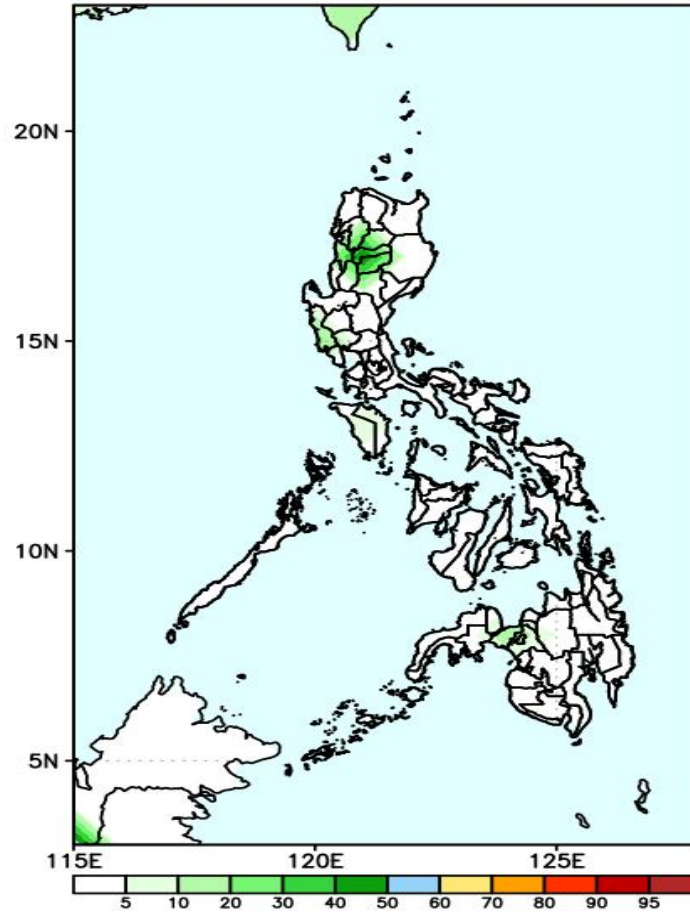
Week 2: Jul 02-08, 2020

GEFS Week-2 Exceedance Prob. > 100mm
Valid: 20200702 - 20200708



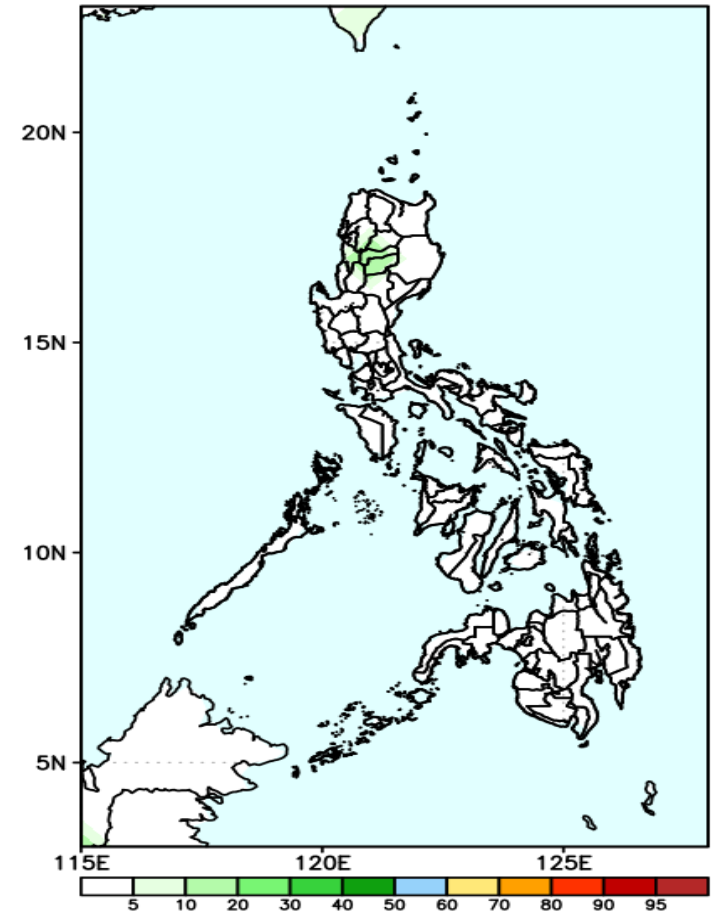
High probability of rainfall to exceed 100mm in Cordillera Region and in northern Mindanao while less likely for the rest of the country during the forecast period.

GEFS Week-2 Exceedance Prob. > 150mm
Valid: 20200702 - 20200708



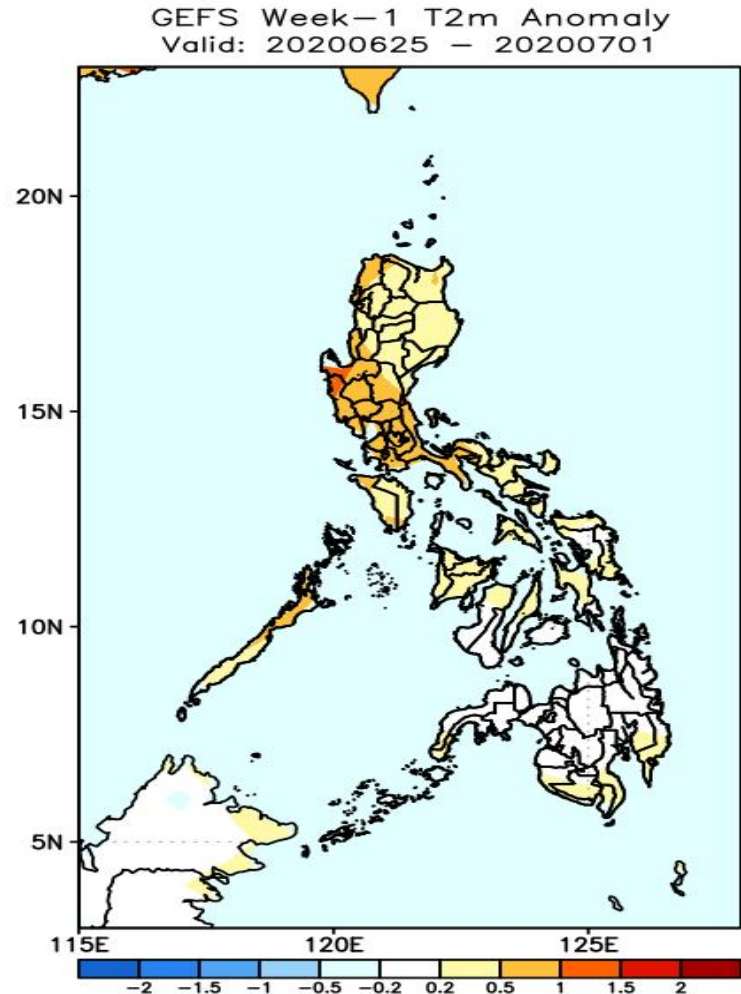
Less probability of rainfall to exceed 150mm in most parts of the country during the forecast period.

GEFS Week-2 Exceedance Prob. > 200mm
Valid: 20200702 - 20200708



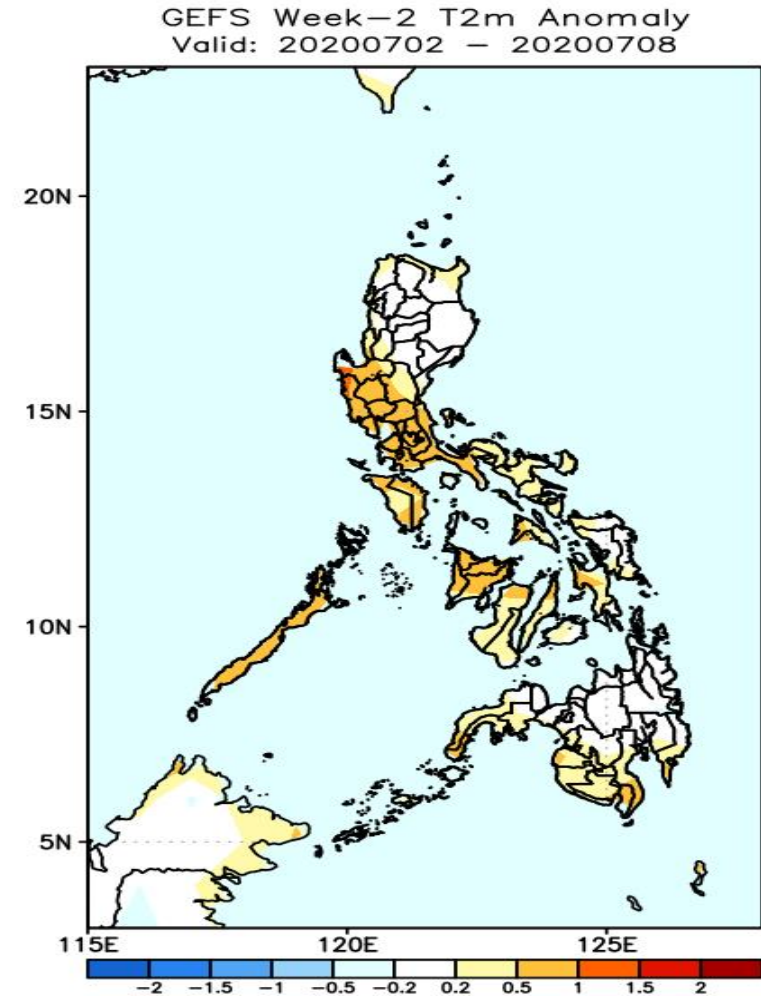
Less probability of rainfall to exceed 200mm in most parts of the country during the forecast period.

GEFS Week-1 & 2 Forecasts: T2m Anomaly



2m Temperature Week 1: June 25-Jul 01, 2020

Average to slightly warmer than average surface air temperature will likely experience in most parts of the country during the forecast period.



2m Temperature Week 2: Jul 02-08, 2020

Average to slightly warmer than average surface air temperature will likely experience in most parts of the country during the forecast period.