



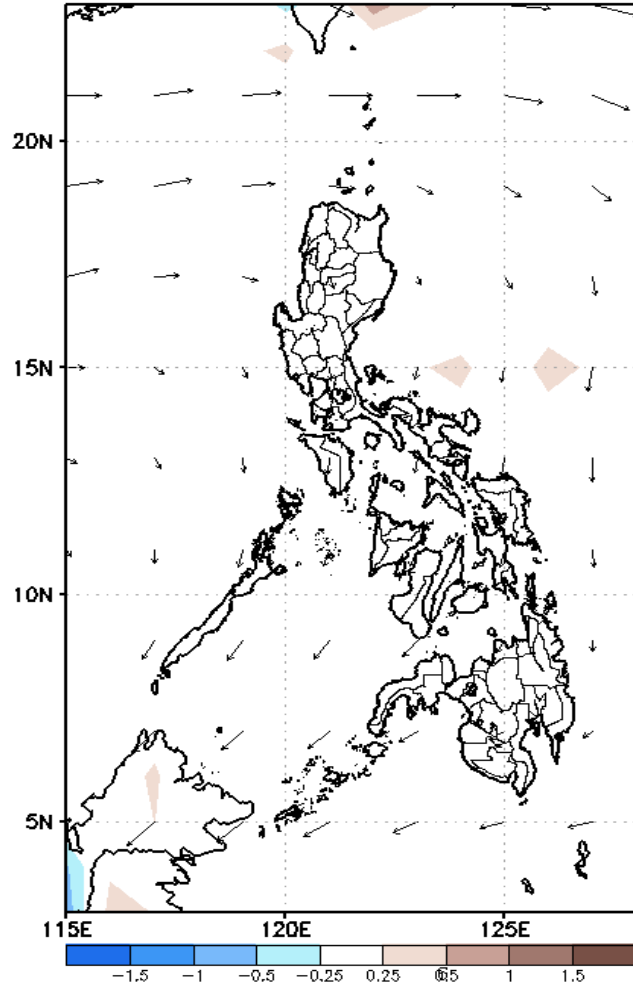
Week 1 & Week 2 Forecast for the Philippines using GEFS Model



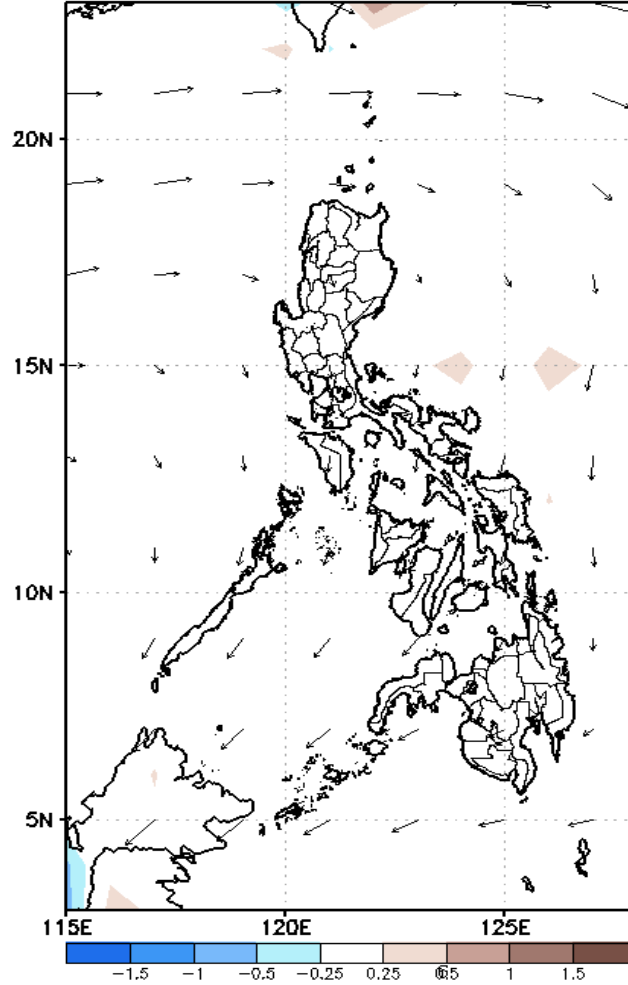
GEFS Week-1 Forecasts: Divergence & Wind Anomaly

Week 1: May 25-31, 2020

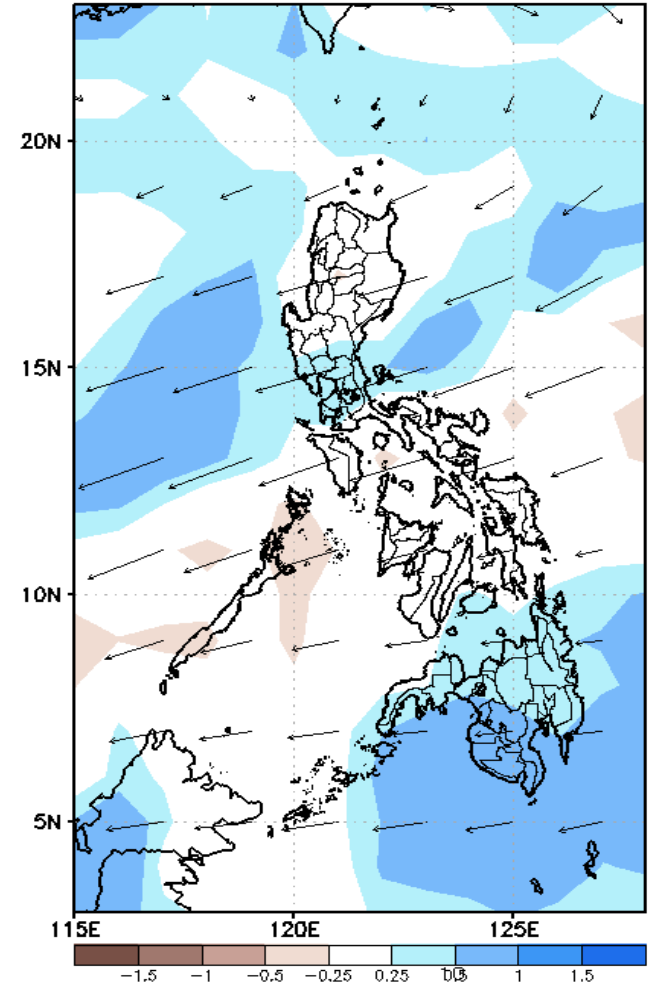
GEFS Week-1 850-hPa Divergence and Wind Anom
Valid: 20200525 - 20200531



GEFS Week-1 700-hPa Divergence and Wind Anom
Valid: 20200525 - 20200531



GEFS Week-1 200-hPa Divergence and Wind Anom
Valid: 20200525 - 20200531



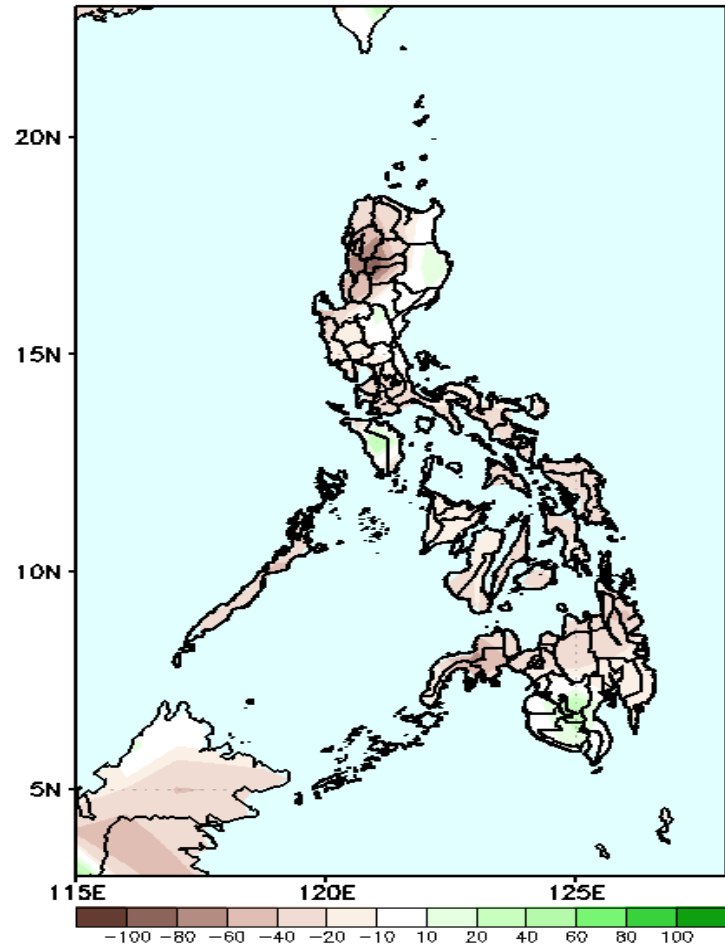
Upper level (200 hPa) Divergence suggest likelihood of precipitation in most parts of Luzon and Mindanao. Westerly to southwesterly windflow affecting western Philippines while Easterlies affecting the remaining parts of the country during the forecast period.



Precipitation Anomaly and Exceedance Probability > 25/50 mm

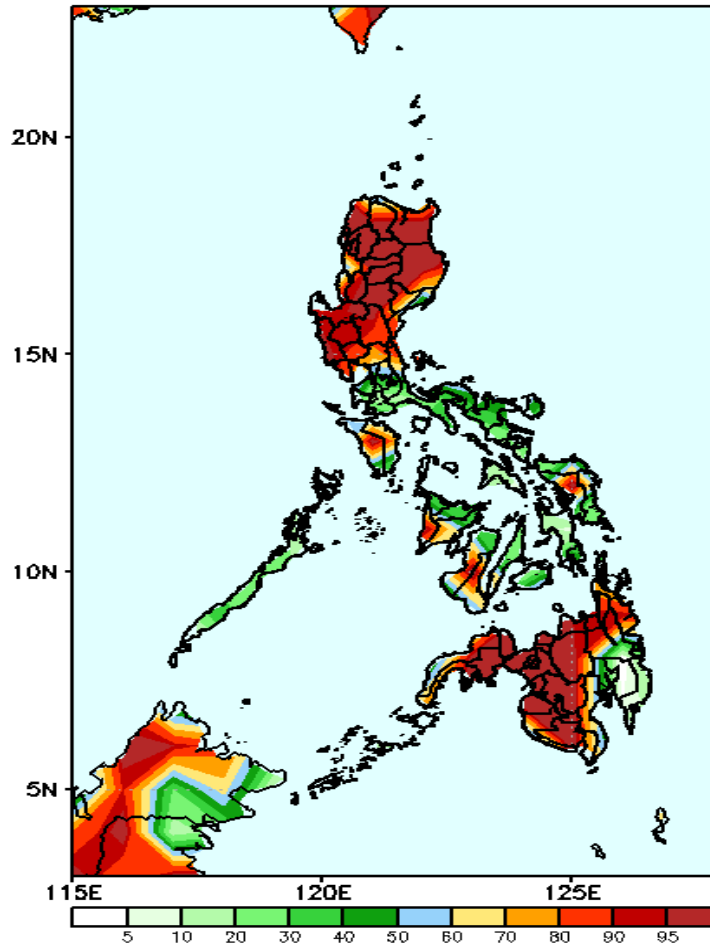
Week 1: May 25-31, 2020

GEFS Week-1 Precip Anomaly
Valid: 20200525 - 20200531



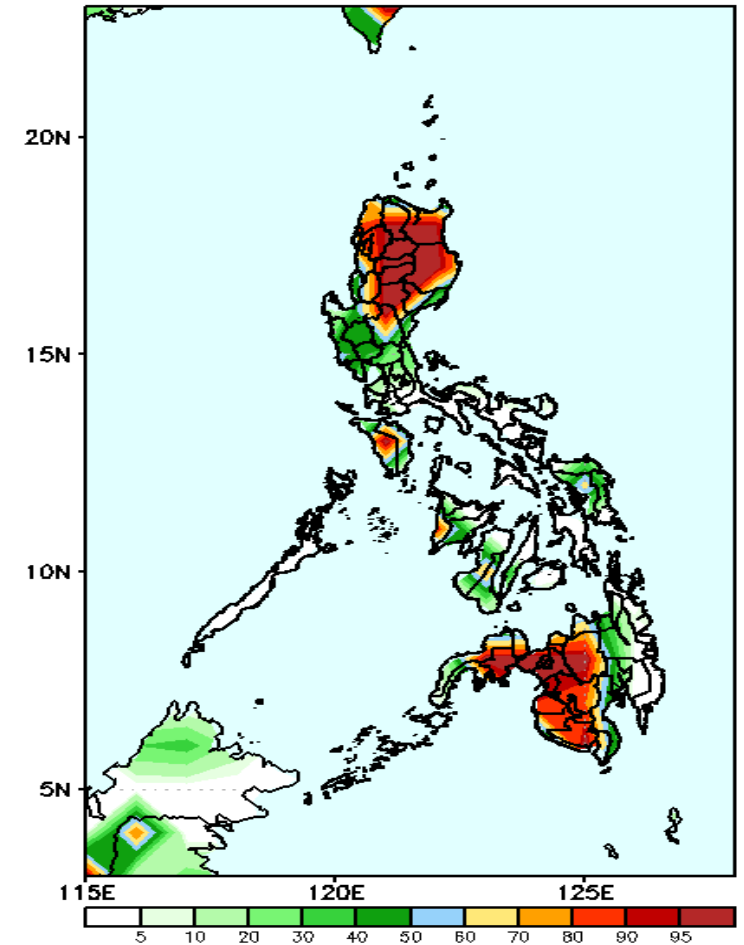
Rainfall deficit of 40-100mm in western Luzon is expected while 10-60mm for the rest of the country during the forecast period.

GEFS Week-1 Exceedance Prob. > 25mm
Valid: 20200525 - 20200531



High probability of rainfall to exceed 25mm in most parts of Luzon, western Visayas, and in Mindanao (except Davao Region) while less likely for the rest of the country during the forecast period.

GEFS Week-1 Exceedance Prob. > 50mm
Valid: 20200525 - 20200531

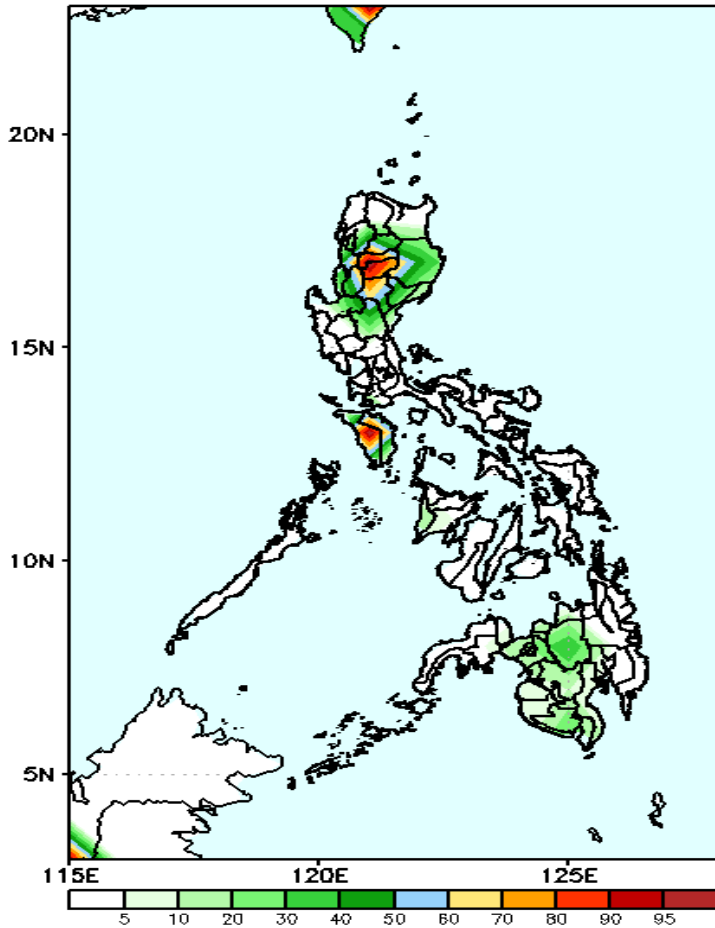


High probability of rainfall to exceed 50mm in northern half of Luzon, Mindoro and western parts of Mindanao while less likely for the rest of the country during the forecast period.

Exceedance Probability > 100/150/200 mm

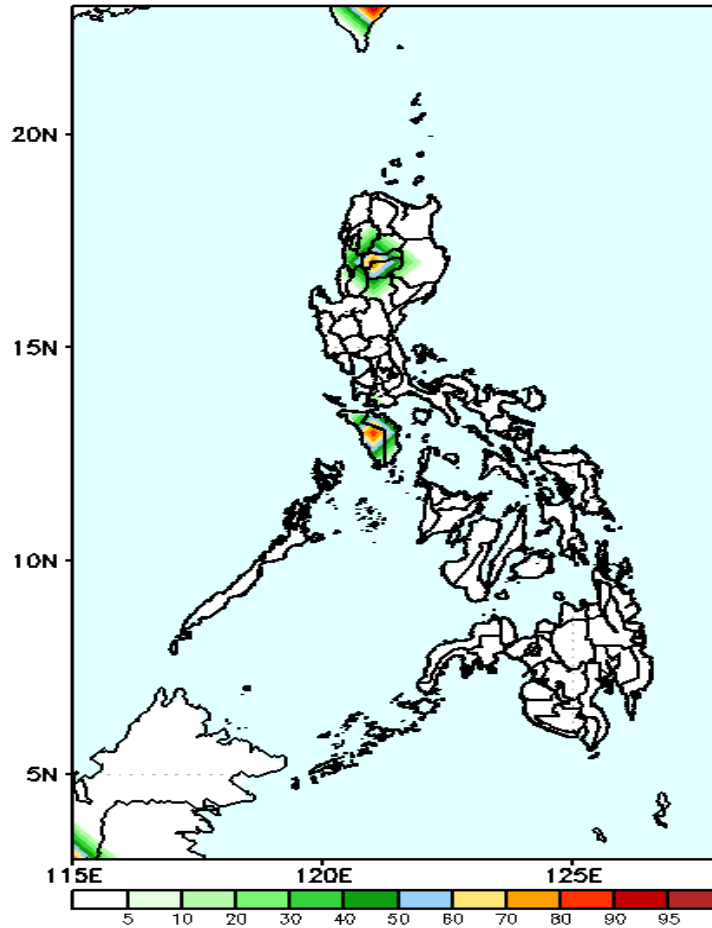
Week 1: May 25-31, 2020

GEFS Week-1 Exceedance Prob. > 100mm
Valid: 20200525 - 20200531



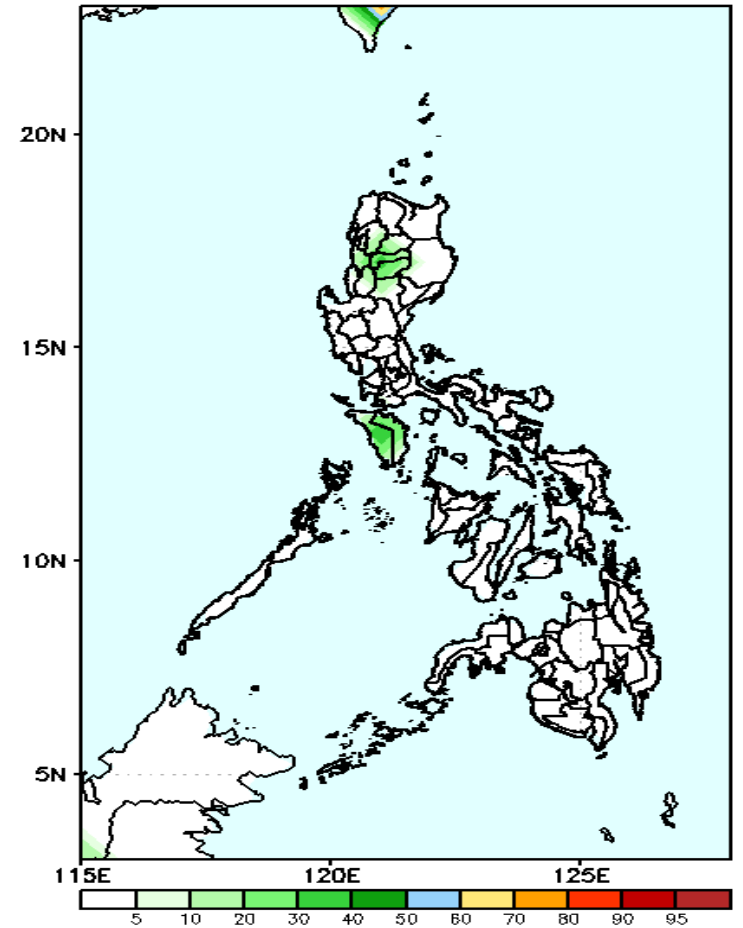
High probability of rainfall to exceed 100mm in Cordillera Region and Mindoro while less likely for the rest of the country during the forecast period.

GEFS Week-1 Exceedance Prob. > 150mm
Valid: 20200525 - 20200531



30-85% probability of rainfall to exceed 150mm in Cordillera Region and Mindoro while less likely for the rest of the country during the forecast period.

GEFS Week-1 Exceedance Prob. > 200mm
Valid: 20200525 - 20200531



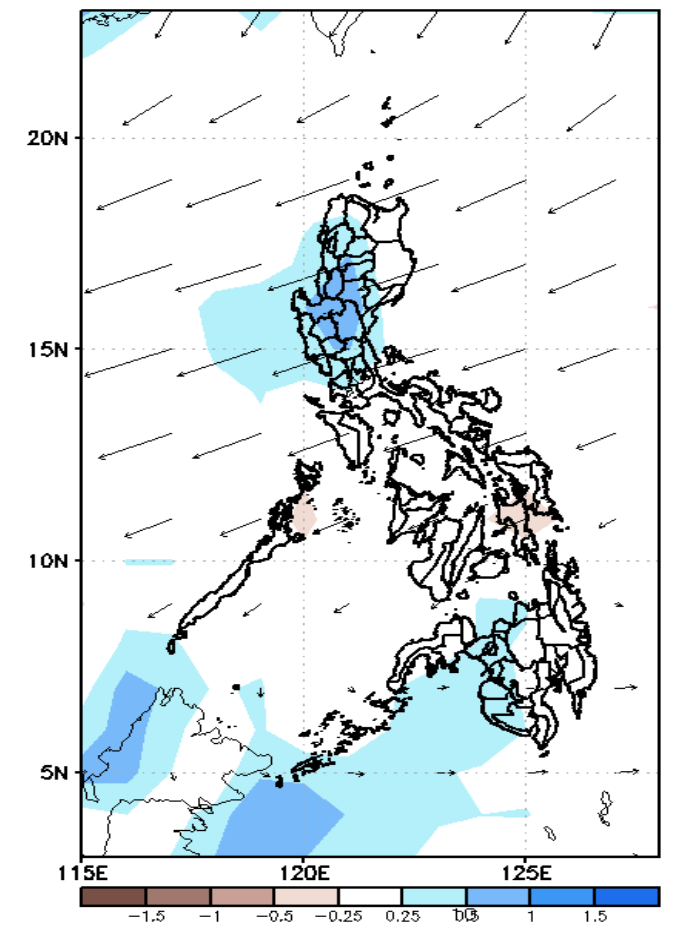
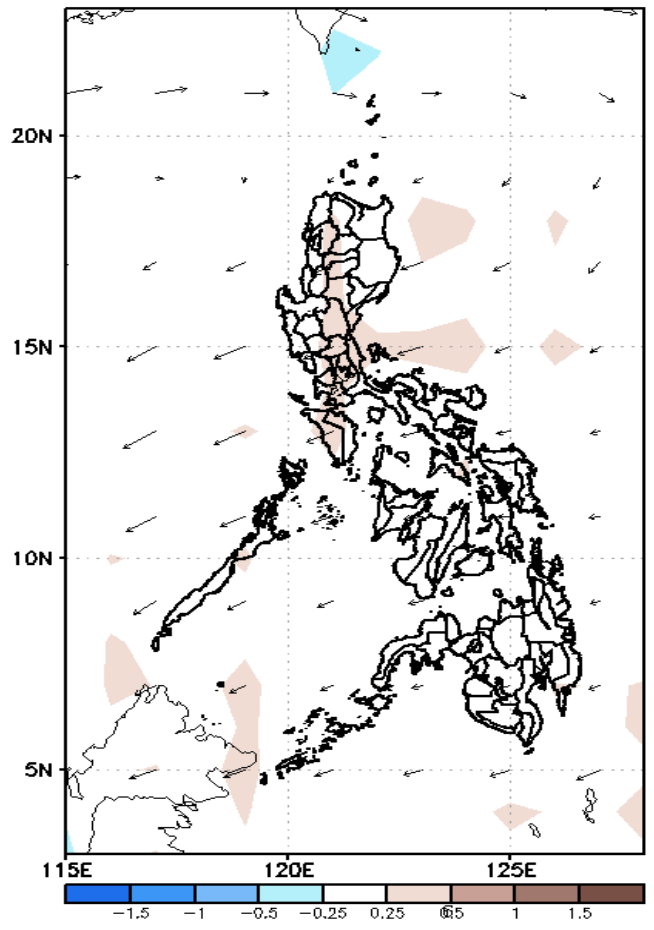
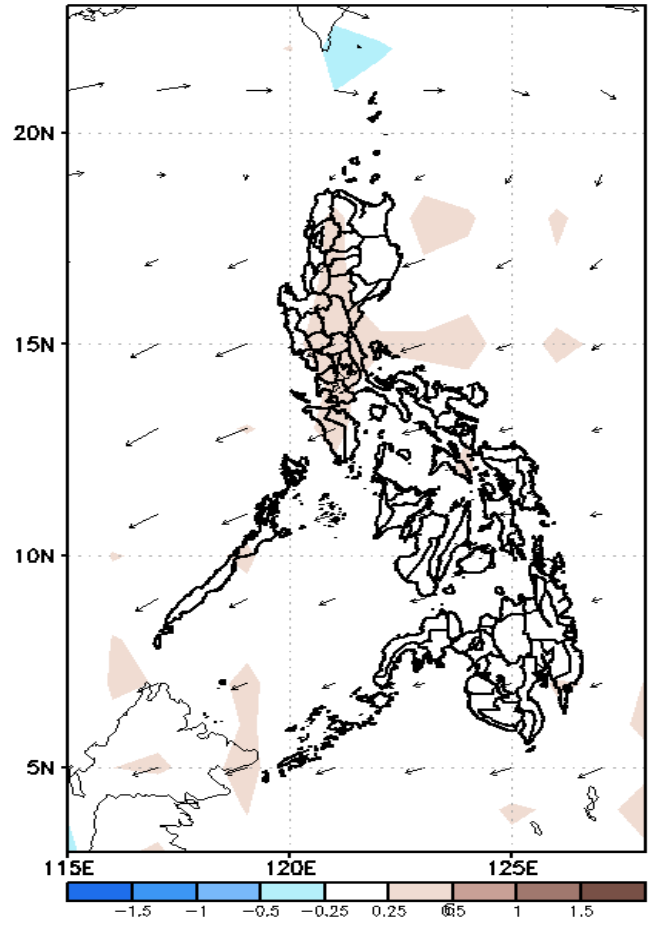
Less probability of rainfall to exceed 200mm in most parts of the country during the forecast period.



GEFS Week-2 Forecasts: Divergence & Wind Anomaly

Week 2: June 01-07, 2020

GEFS Week-2 850-hPa Divergence and Wind Anom Valid: 20200601 - 20200607
GEFS Week-2 700-hPa Divergence and Wind Anom Valid: 20200601 - 20200607
GEFS week-2 200-hPa Divergence and Wind Anom Valid: 20200601 - 20200607

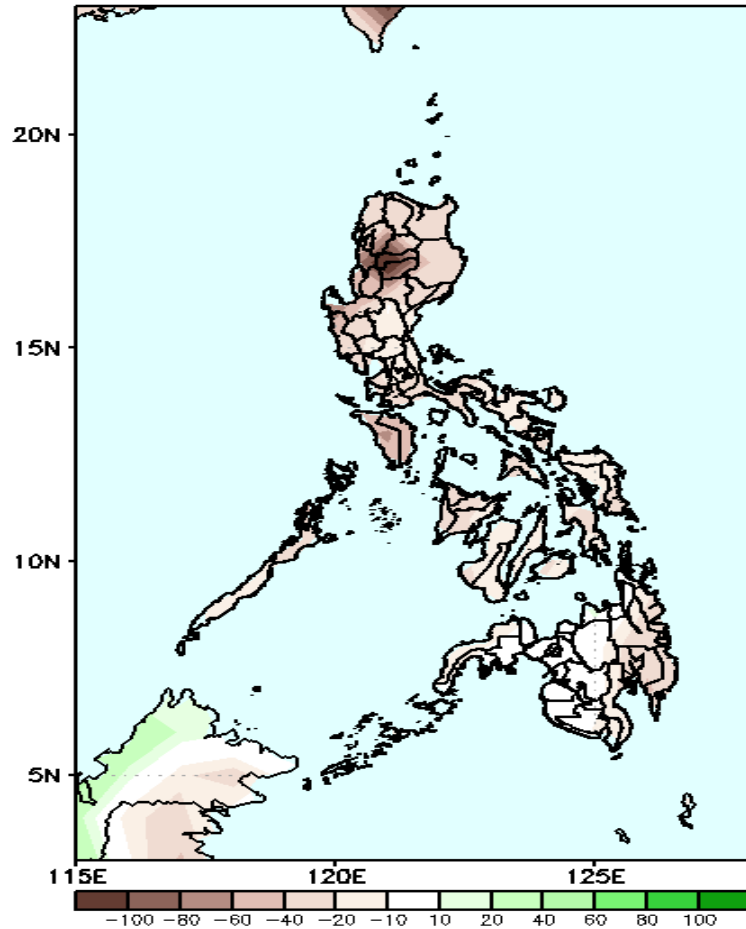


Upper level (200 hPa) Divergence suggest likelihood of precipitation in western Luzon and western Mindanao. Easterlies affecting most parts of the country during the forecast period.

Precipitation Anomaly and Exceedance Probability > 25/50 mm

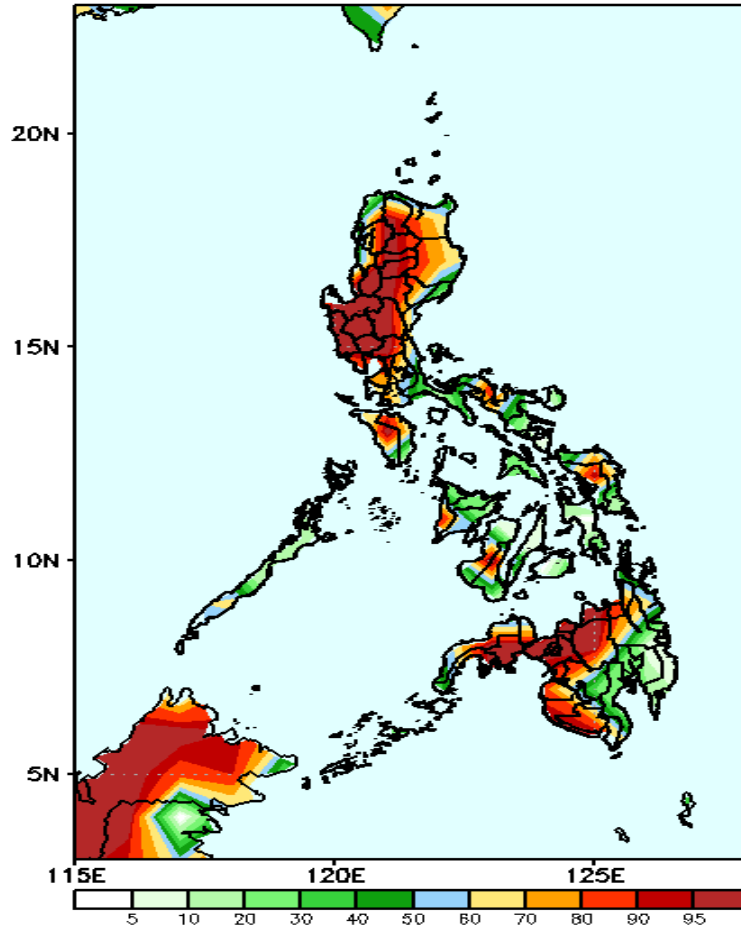
Week 2: June 01-07, 2020

GEFS Week-2 Precip Anomaly
Valid: 20200601 - 20200607



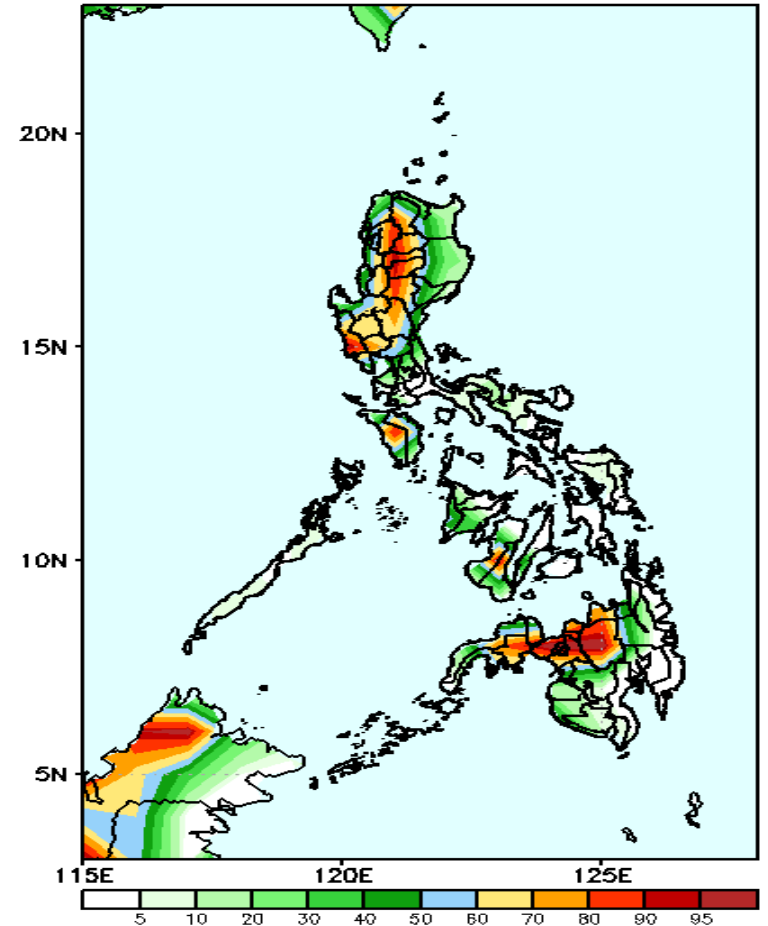
Rainfall deficit of 40-100mm is expected in most parts of Luzon while 10-50mm for the rest of the country during the forecast period.

GEFS Week-2 Exceedance Prob. > 25mm
Valid: 20200601 - 20200607



High probability of rainfall to exceed 25mm in most parts of Luzon, Samar provinces and western Visayas and in northern and western Mindanao (including Zamboanga Peninsula) while less likely for the rest of the country during the forecast period.

GEFS Week-2 Exceedance Prob. > 50mm
Valid: 20200601 - 20200607

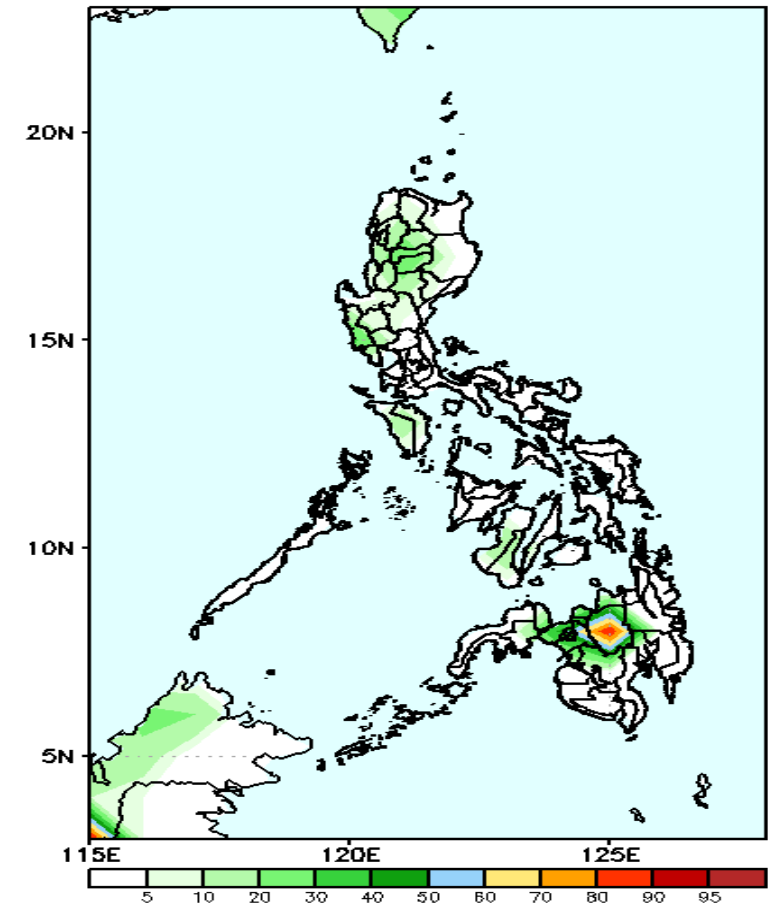


High probability of rainfall to exceed 50mm in western parts of Luzon, Mindoro, northern Mindanao (including Zamboanga del Sur) while less likely for the rest of the country during the forecast period.

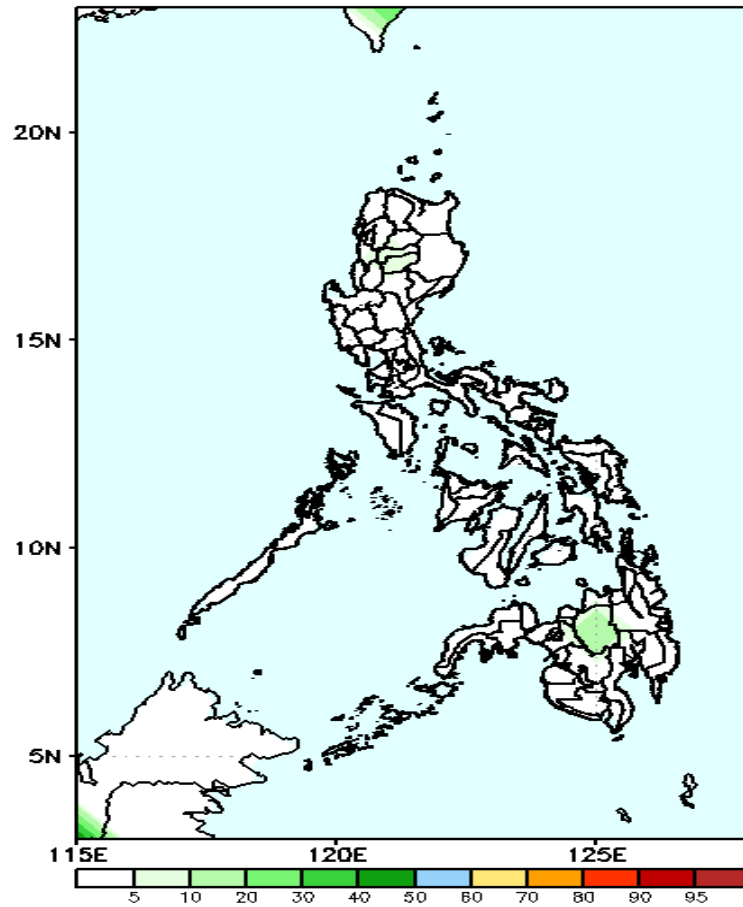
Exceedance Probability > 100/150/200 mm

Week 2: June 01-07, 2020

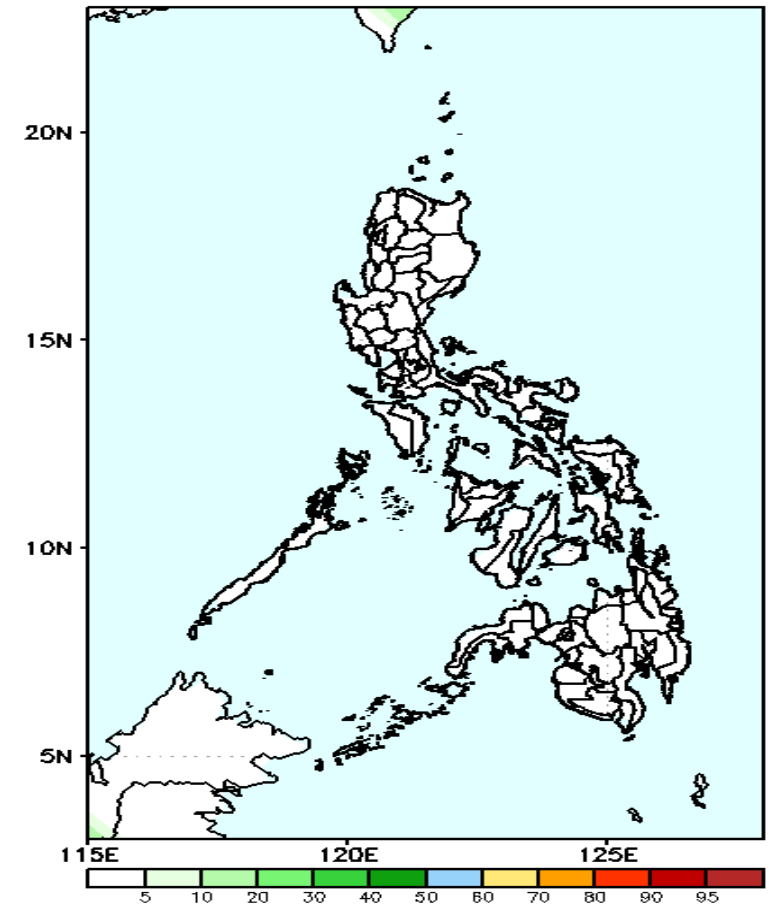
GEFS Week-2 Exceedance Prob. > 100mm GEFS Week-2 Exceedance Prob. > 150mm GEFS Week-2 Exceedance Prob. > 200mm
Valid: 20200601 - 20200607



60-95% probability of rainfall to exceed 100mm in Bukidnon while less likely for the rest of the country during the forecast period.



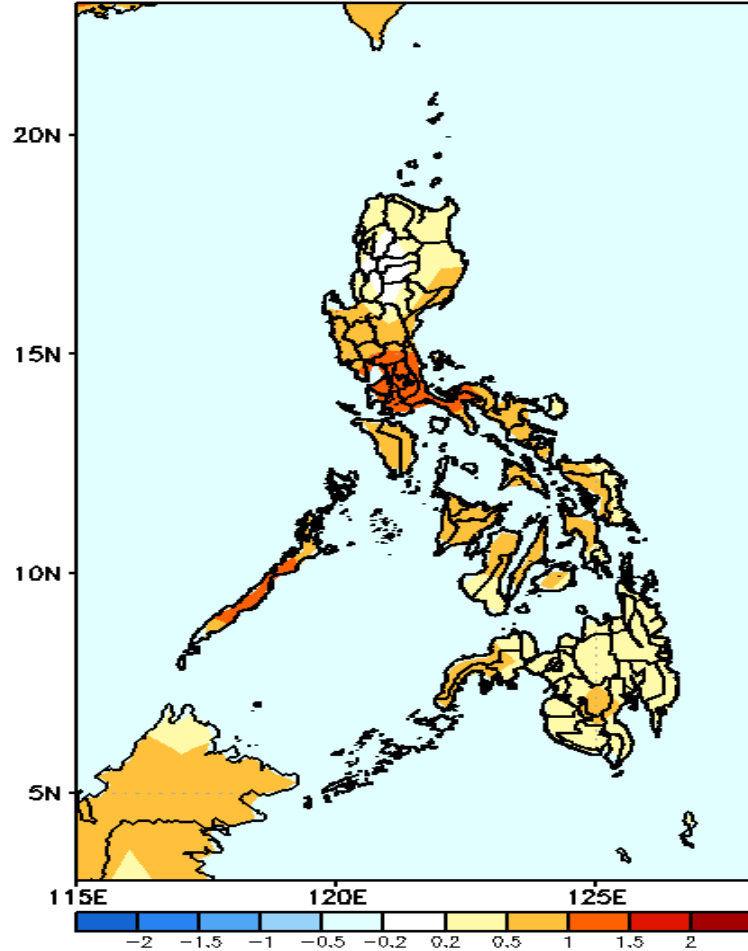
Less probability of rainfall to exceed 150mm in most parts of the country during the forecast period.



Less probability of rainfall to exceed 200mm in most parts of the country during the forecast period.

GEFS Week-1 & 2 Forecasts: T2m Anomaly

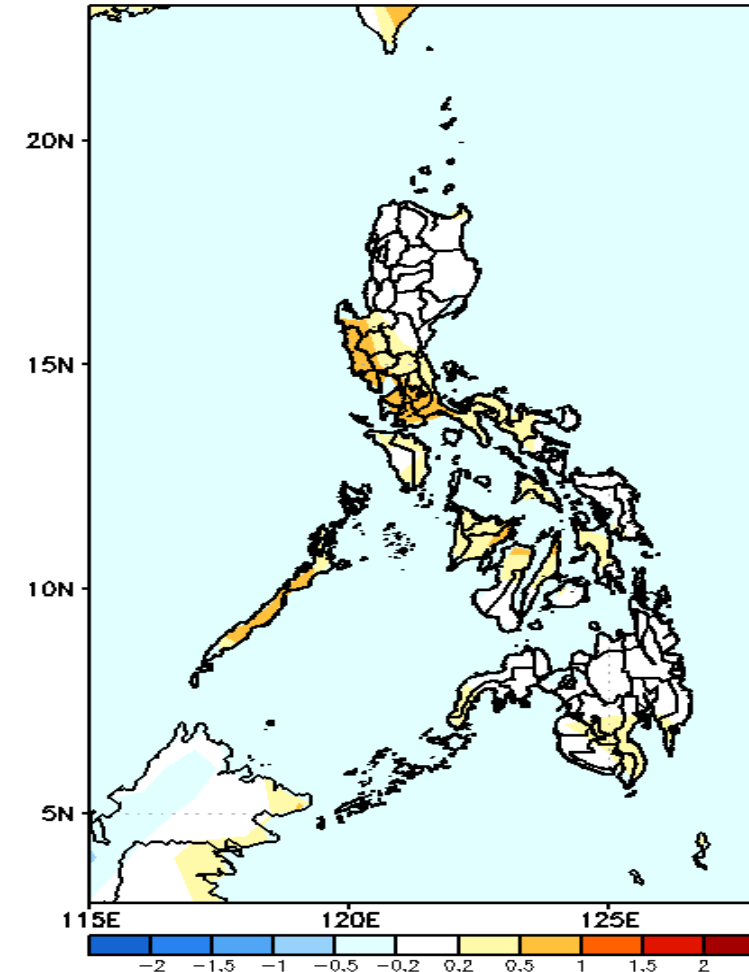
GEFS Week-1 T2m Anomaly
Valid: 20200525 - 20200531



2m Temperature Week 1 May 25-31, 2020

Slightly warmer to warmer than average surface air temperature will likely experience in most parts of central and southern Luzon (including NCR and Palawan) and in Visayas while average surface air temperature is expected for the rest of the country during the forecast period.

GEFS Week-2 T2m Anomaly
Valid: 20200601 - 20200607



2m Temperature Week 2: June 01-07, 2020

Average to slightly warmer than average surface air temperature will likely experience in most parts of the country during the forecast period.