



USAID
FROM THE AMERICAN PEOPLE



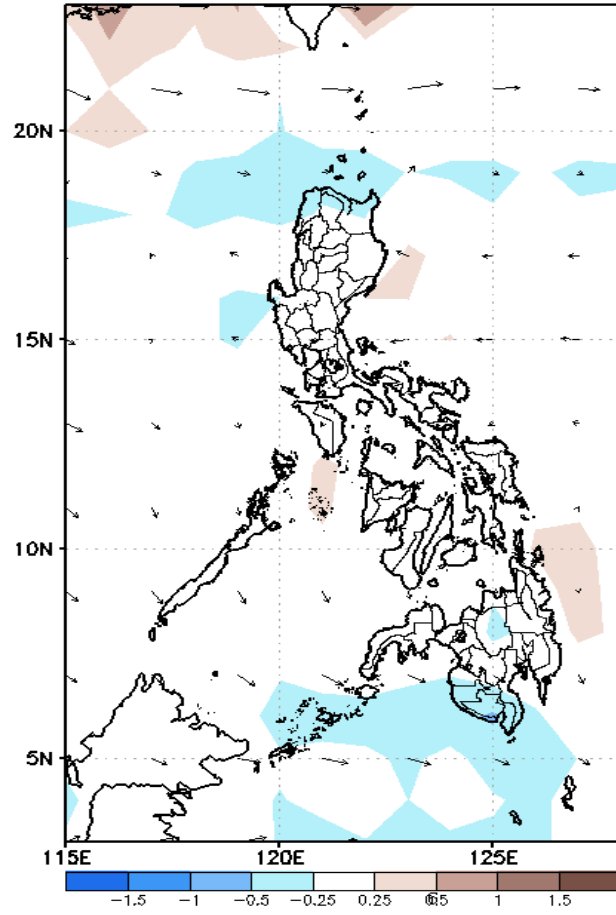
Week 1 & Week 2 Forecast for the Philippines using GEFS Model



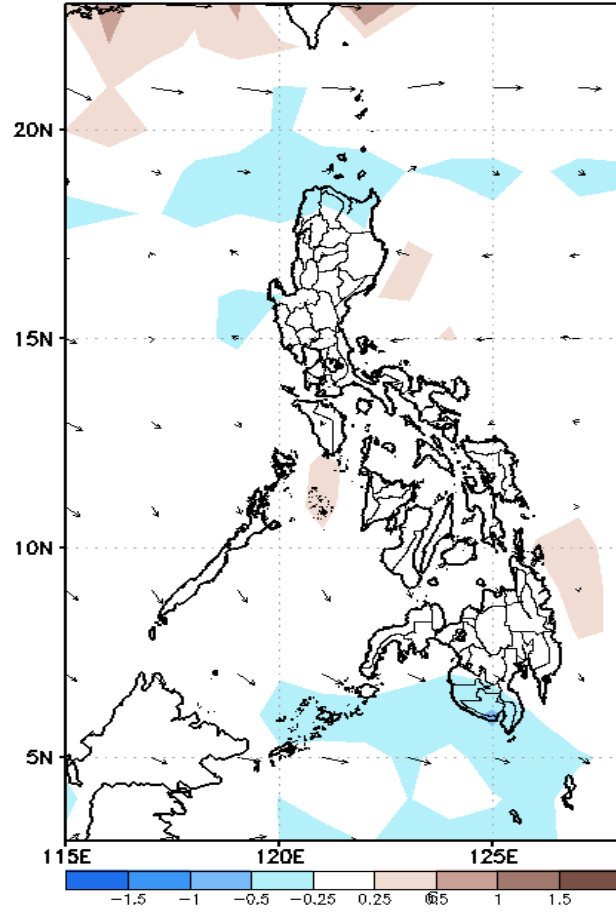
GEFS Week-1 Forecasts: Divergence & Wind Anomaly

Week 1: March 26- April 01, 2020

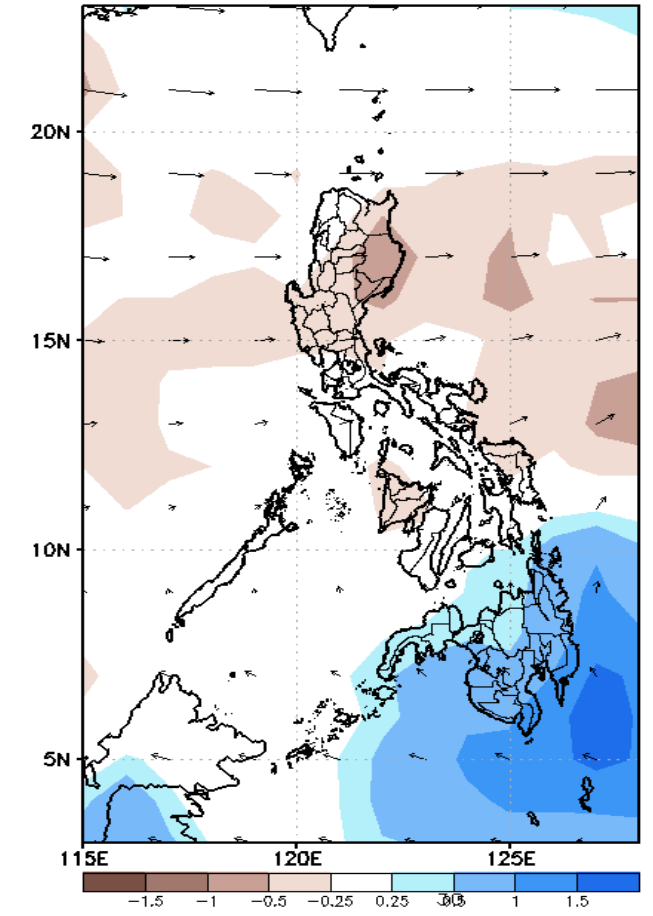
GEFS Week-1 850-hPa Divergence and Wind Anom.
Valid: 20200326 - 20200401



GEFS Week-1 700-hPa Divergence and Wind Anom.
Valid: 20200326 - 20200401



GEFS Week-1 200-hPa Divergence and Wind Anom.
Valid: 20200326 - 20200401

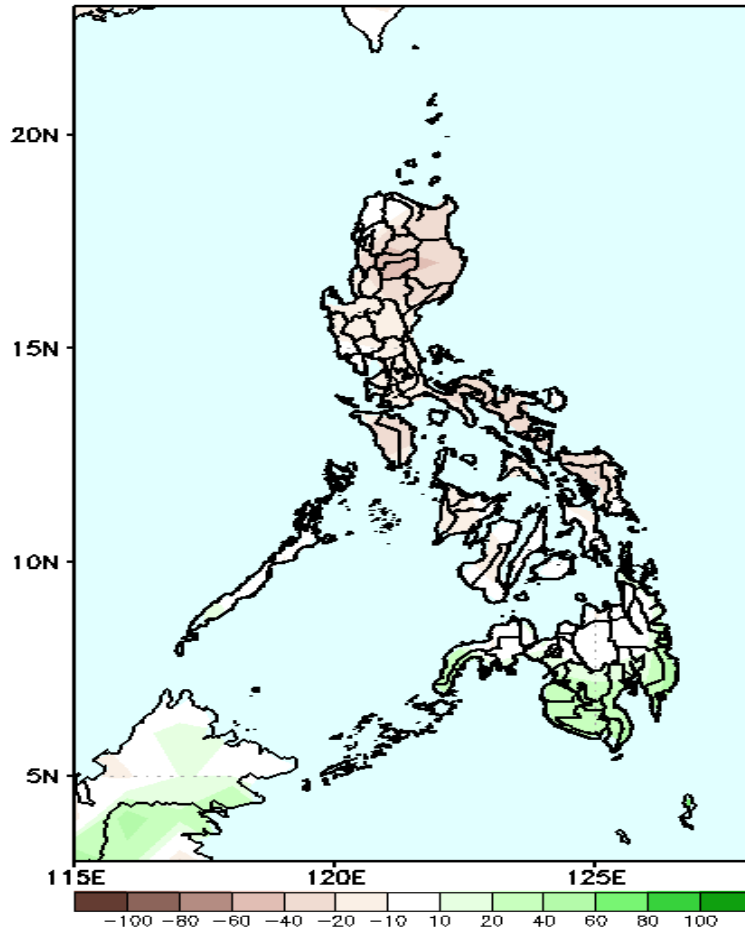


Low level (850 hPa) Divergence show likelihood of precipitation in most parts of Mindanao. Easterlies affecting most parts of the country during the forecast period.

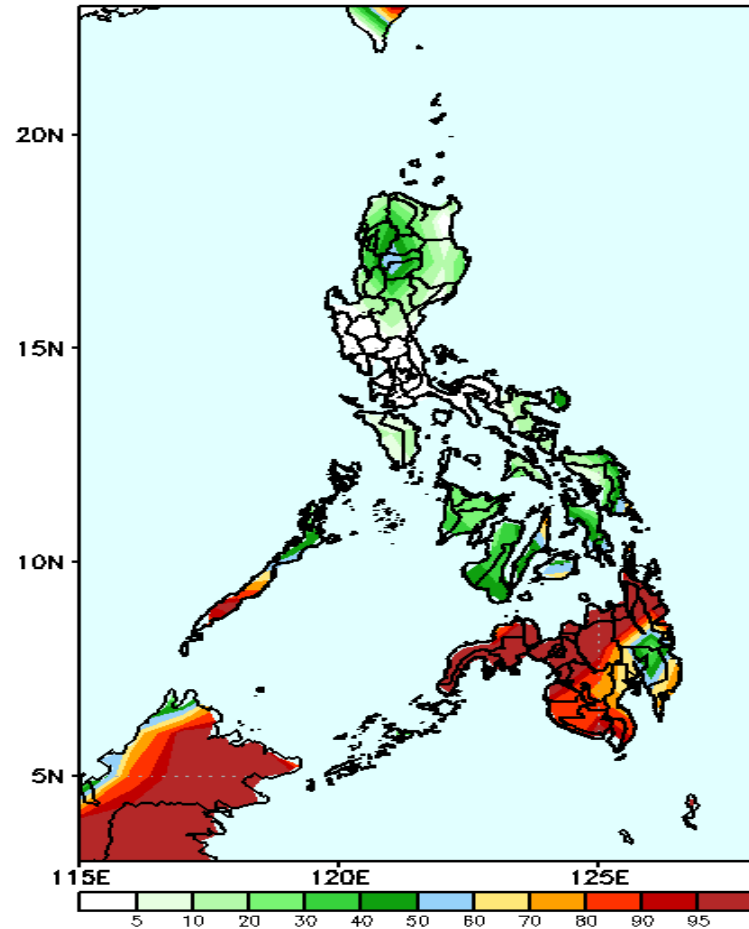
Precipitation Anomaly and Exceedance Probability > 25/50 mm

Week 1: March 26- April 01, 2020

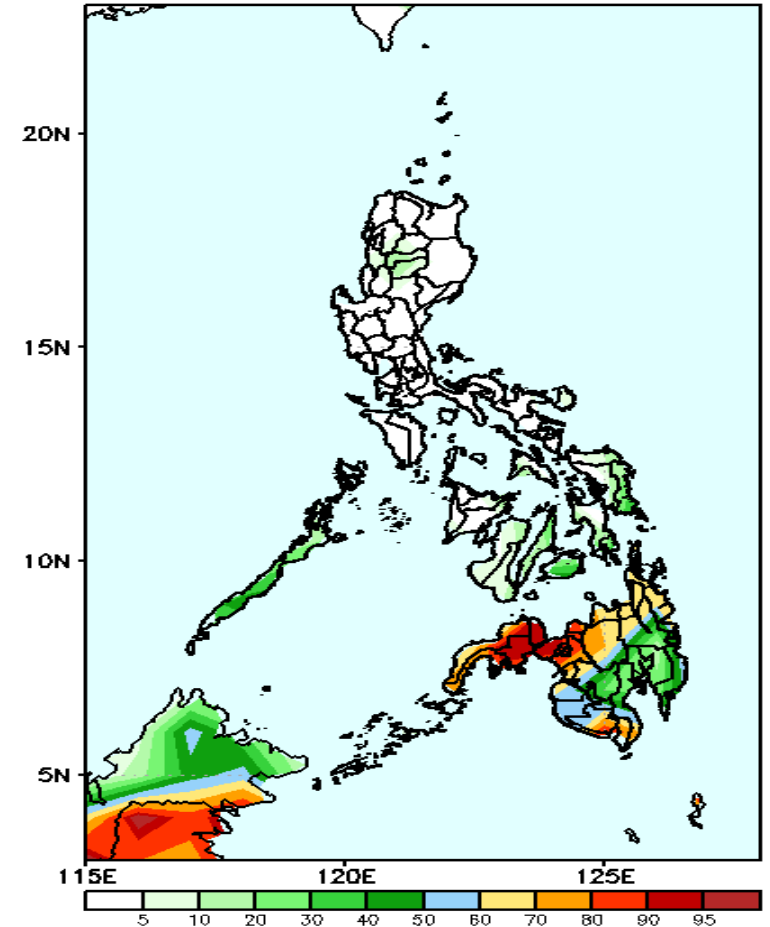
GEFS Week-1 Precip Anomaly
Valid: 20200326 - 20200401



GEFS Week-1 Exceedance Prob. > 25mm
Valid: 20200326 - 20200401



GEFS Week-1 Exceedance Prob. > 50mm
Valid: 20200326 - 20200401



Rainfall deficit of 20-50 mm is most likely in most parts of Luzon and Visayas while Mindanao is expected to have an increase of up to 60 mm rainfall during the forecast period.

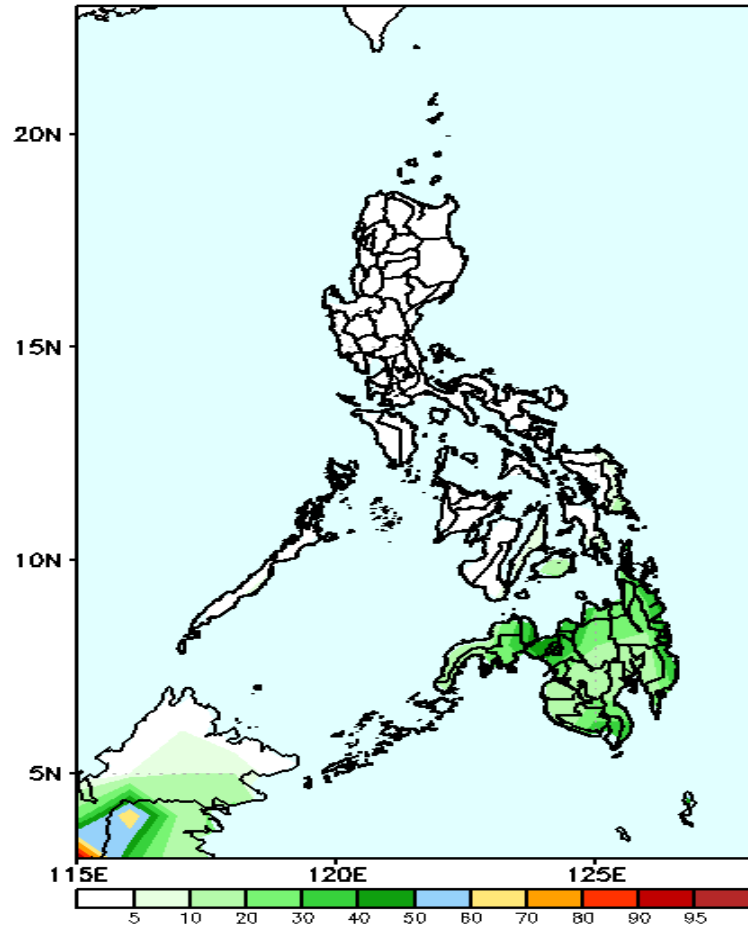
High probability of rainfall to exceed 25mm in most parts of Mindanao (except in the southeastern part) while less likely for the rest of the country during the forecast period.

High probability of rainfall to exceed 50mm in Northern Mindanao and Zamboanga Peninsula while less likely for the rest of the country during the forecast period.

Exceedance Probability > 100/150/200 mm

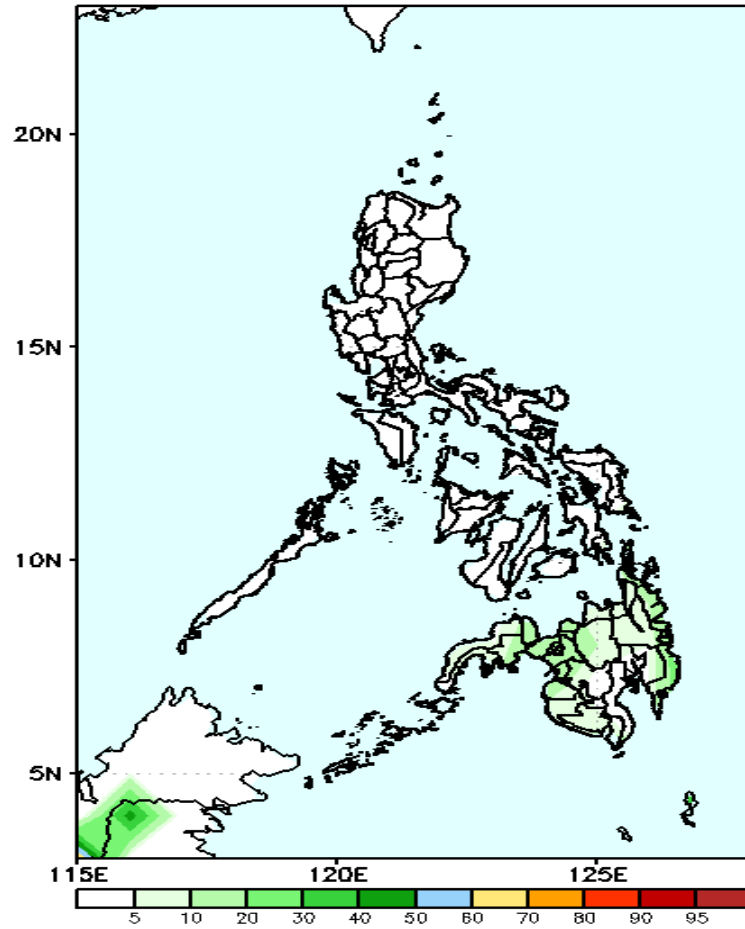
Week 1: March 26- April 01, 2020

GEFS Week-1 Exceedance Prob. > 100mm
Valid: 20200326 - 20200401



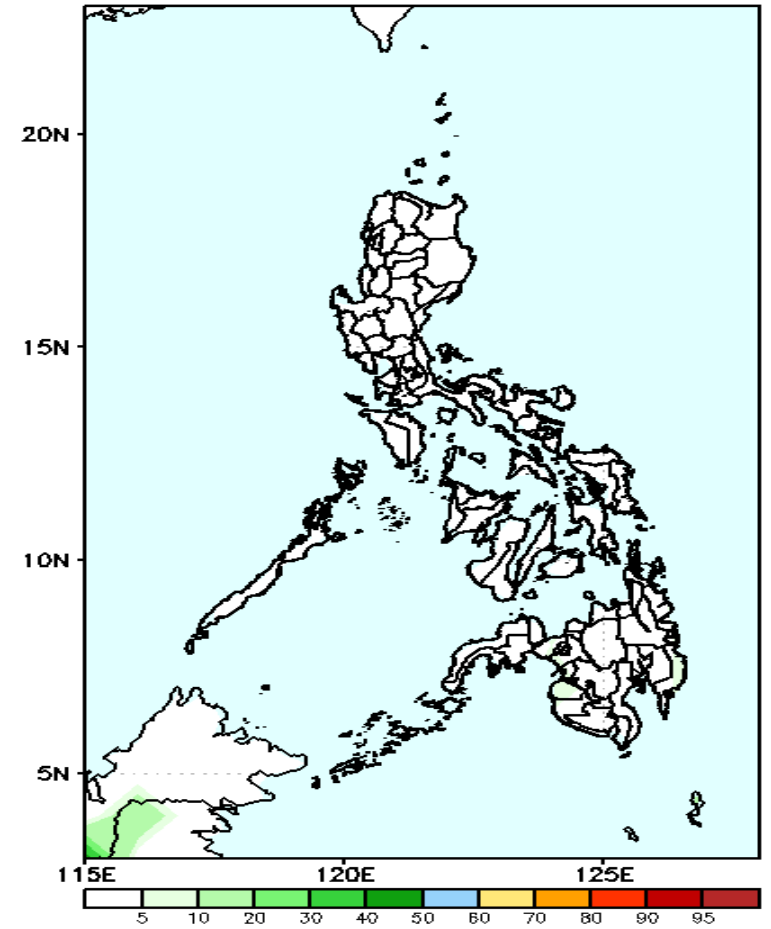
40-50% probability of rainfall to exceed 100mm in Mindanao while less probability in Luzon and Visayas for the rest of the country.

GEFS Week-1 Exceedance Prob. > 150mm
Valid: 20200326 - 20200401



Less probability of rainfall to exceed 150 mm in most parts of the country during the forecast period.

GEFS Week-1 Exceedance Prob. > 200mm
Valid: 20200326 - 20200401

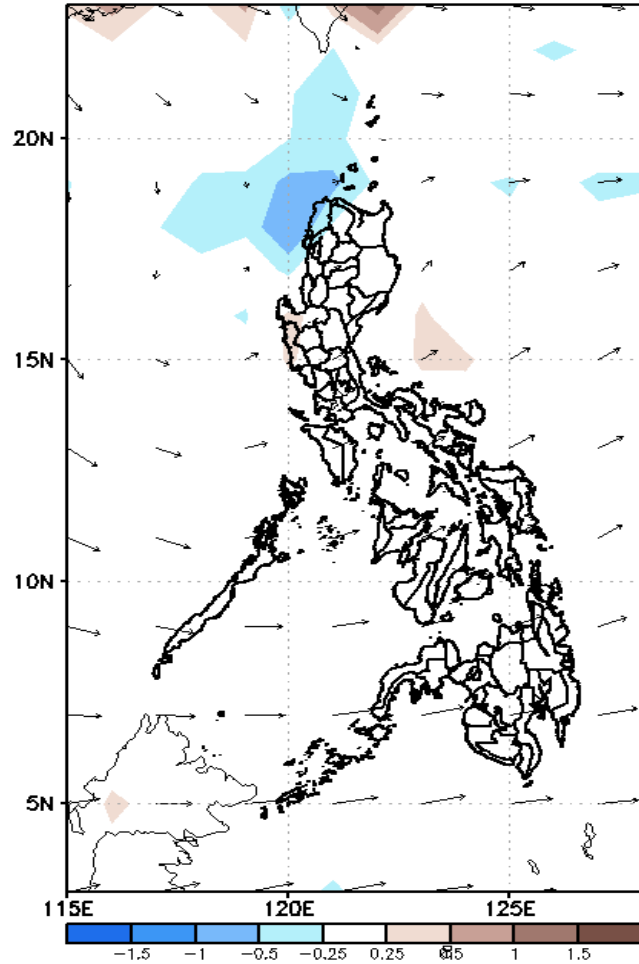


Less probability of rainfall to exceed 200 mm in most parts of the country during the forecast period.

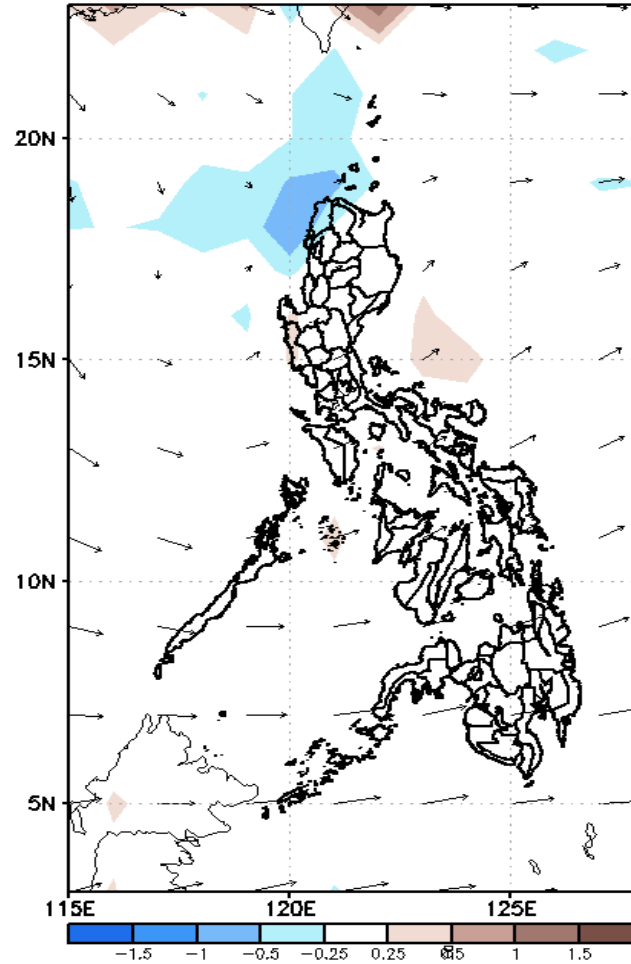
GEFS Week-2 Forecasts: Divergence & Wind Anomaly

Week 2: April 02- April 08, 2020

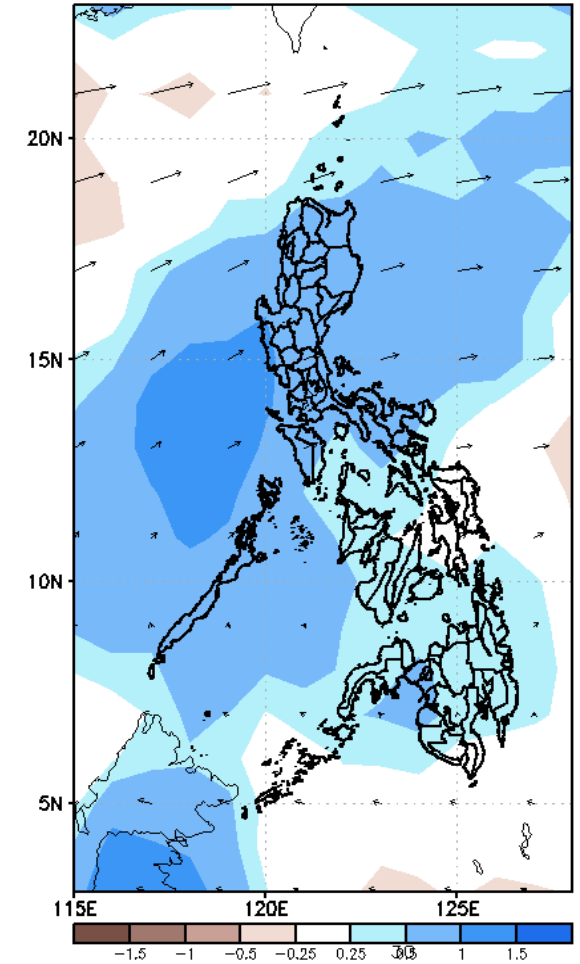
GEFS Week-2 850-hPa Divergence and Wind Anom
Valid: 20200402 - 20200408



GEFS Week-2 700-hPa Divergence and Wind Anom
Valid: 20200402 - 20200408



GEFS week-2 200-hPa Divergence and Wind Anom
Valid: 20200402 - 20200408



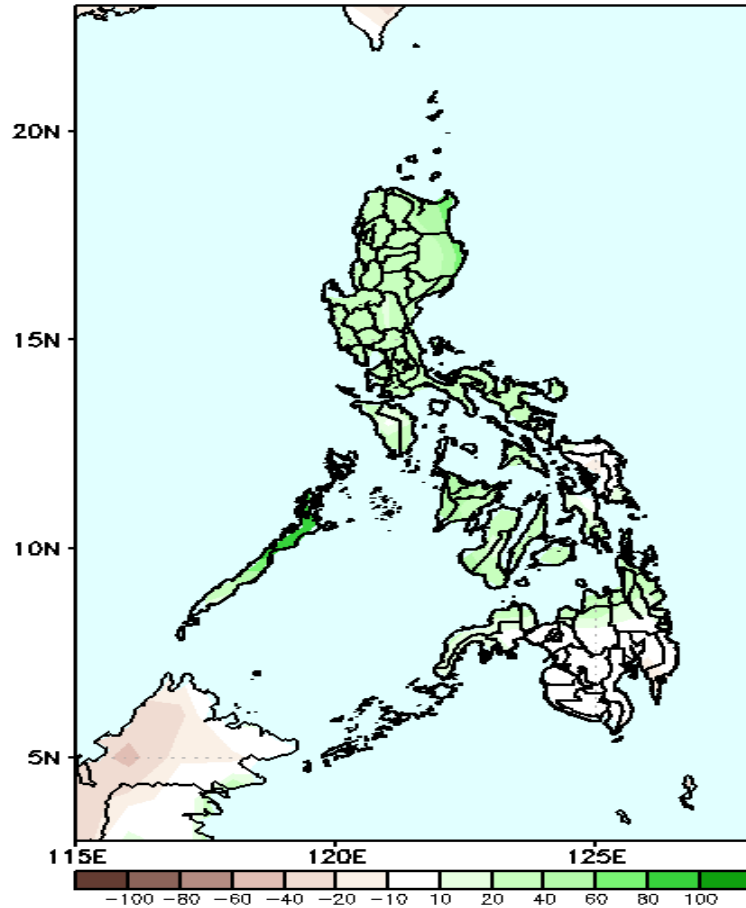
Low level (850 hPa) Divergence show likelihood of precipitation in Luzon and Mindanao due to localized thunderstorm. Easterlies affecting most parts of the country during the forecast period.



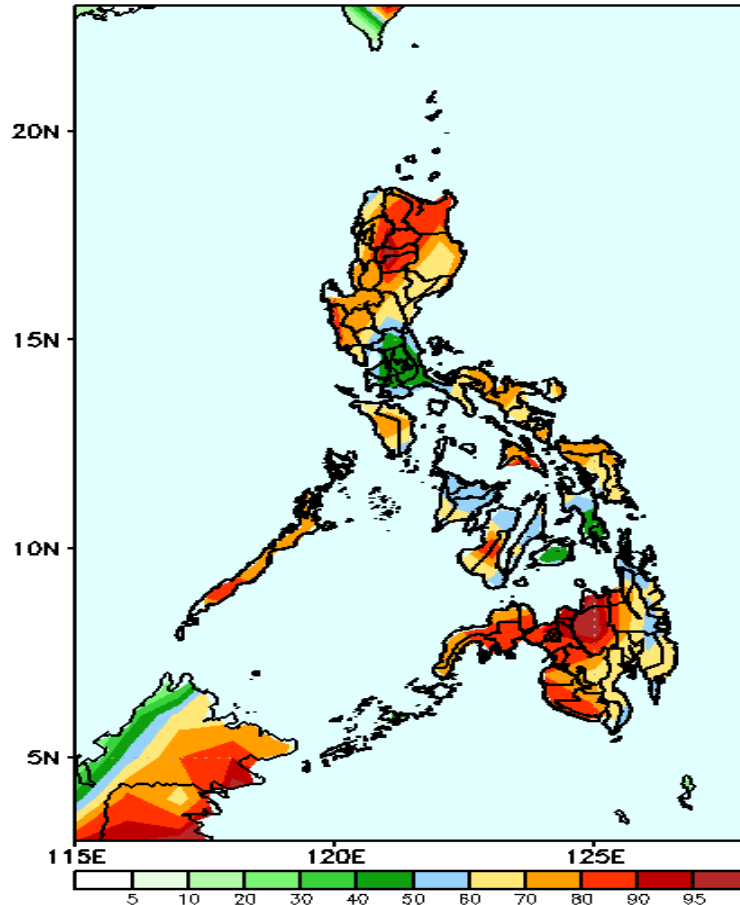
Precipitation Anomaly and Exceedance Probability > 25/50 mm

Week 2: April 02- April 08, 2020

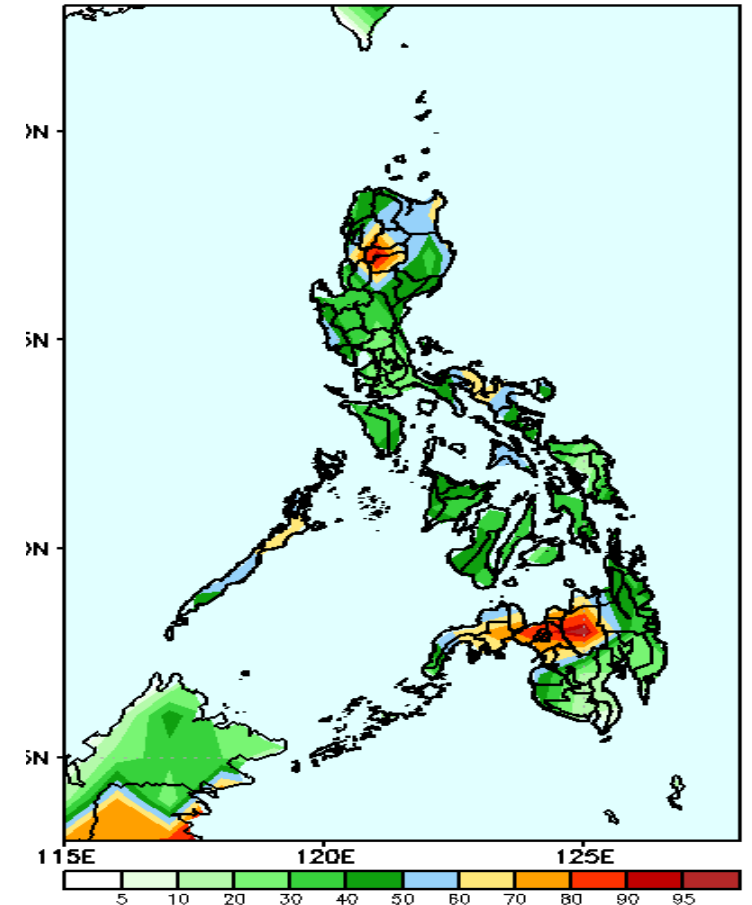
GEFS Week-2 Precip Anomaly
Valid: 20200402 - 20200408



GEFS Week-2 Exceedance Prob. > 25mm
Valid: 20200402 - 20200408



GEFS Week-2 Exceedance Prob. > 50mm
Valid: 20200402 - 20200408



Increase of rainfall up to 70mm is expected in most parts of Luzon and Visayas while Mindanao will likely to have near normal rainfall during the forecast period.

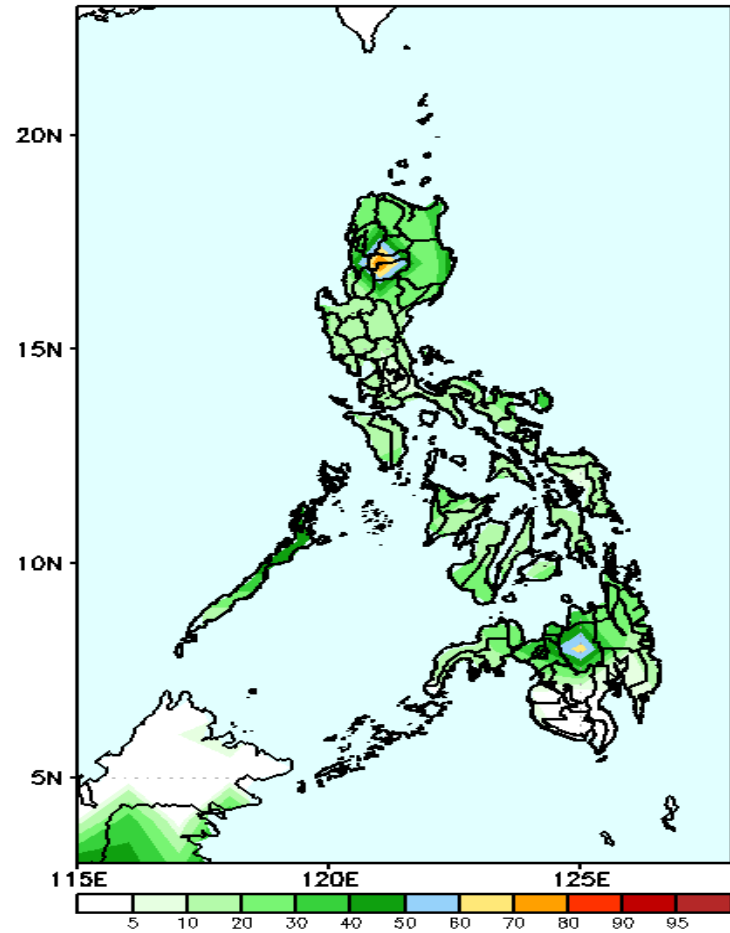
High probabilities for rainfall exceeding 25mm in most parts of the country during the forecast period.

60-95% probabilities for rainfall exceeding 50mm in CAR, Cagayan Valley, Northern Mindanao and Zamboanga Peninsula, while 40-60% probability for the rest of the country during the forecast period.

Exceedance Probability > 100/150/200 mm

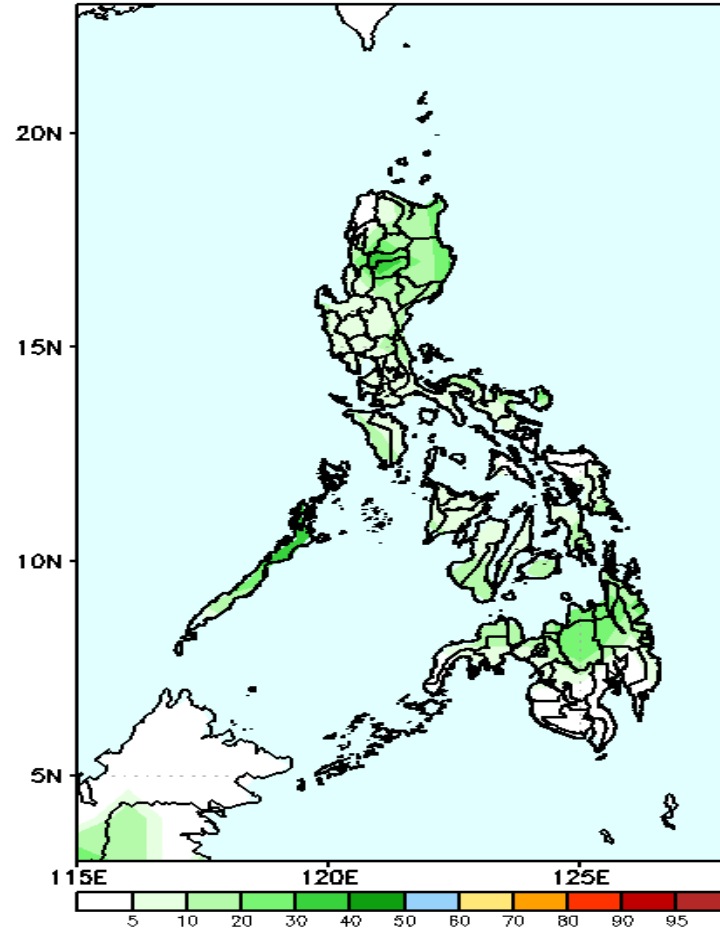
Week 2: April 02- April 08, 2020

GEFS Week-2 Exceedance Prob. > 100mm
Valid: 20200402 - 20200408



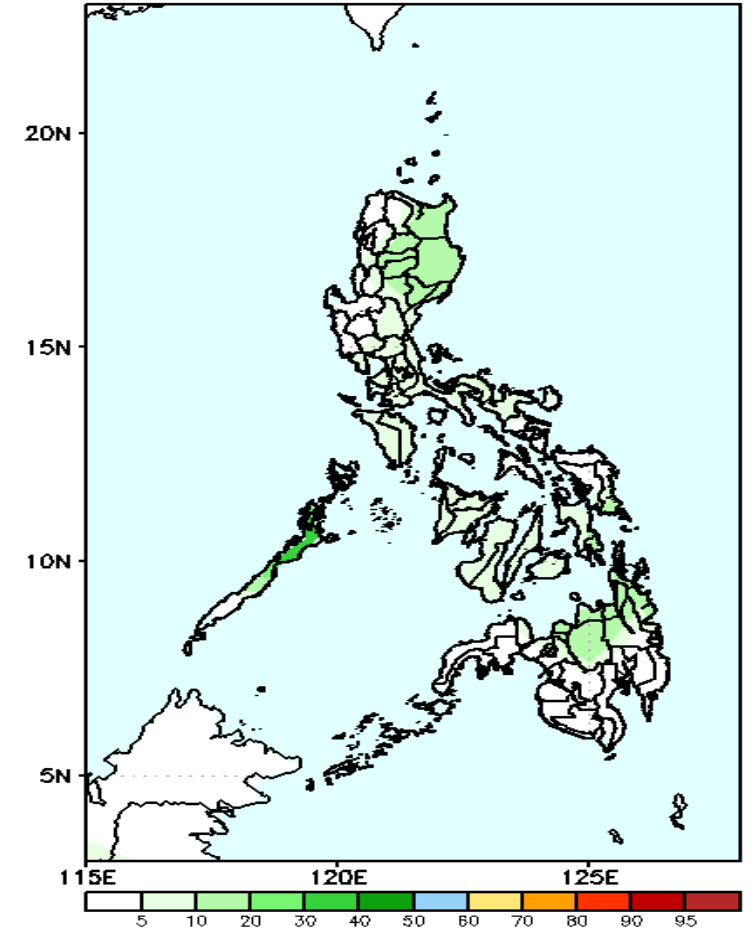
60-85% probabilities for rainfall exceeding 100 mm in CAR and Bukidnon while 40-60% probability for the rest of the country (except southern Mindanao) during the forecast period

GEFS Week-2 Exceedance Prob. > 150mm
Valid: 20200402 - 20200408



Less probability of rainfall to exceed 150 mm in most parts of the country during the forecast period.

GEFS Week-2 Exceedance Prob. > 200mm
Valid: 20200402 - 20200408

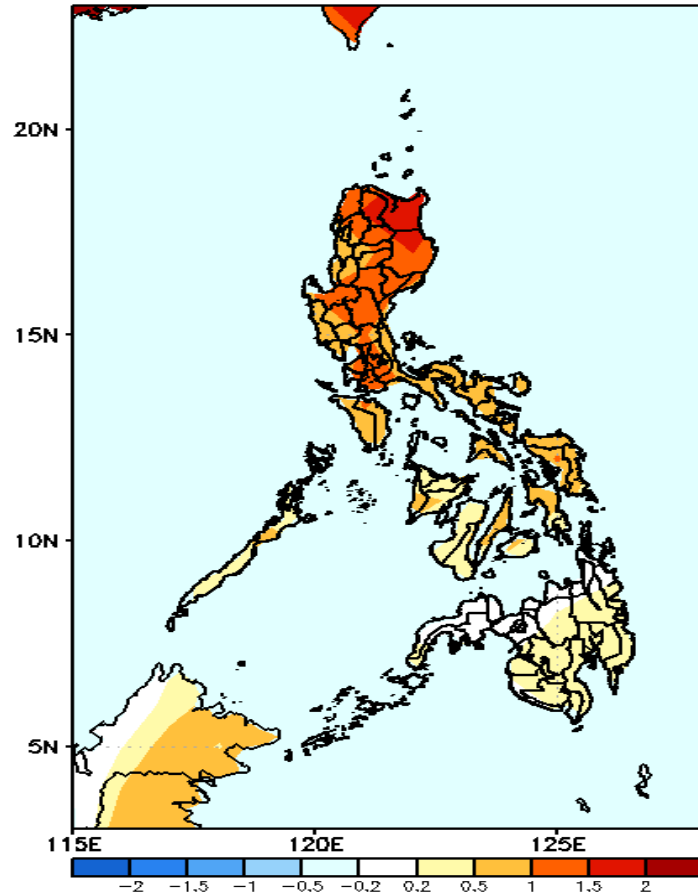


Less probability of rainfall to exceed 200 mm in most parts of the country during the forecast period.



GEFS Week-1 & 2 Forecasts: T2m Anomaly

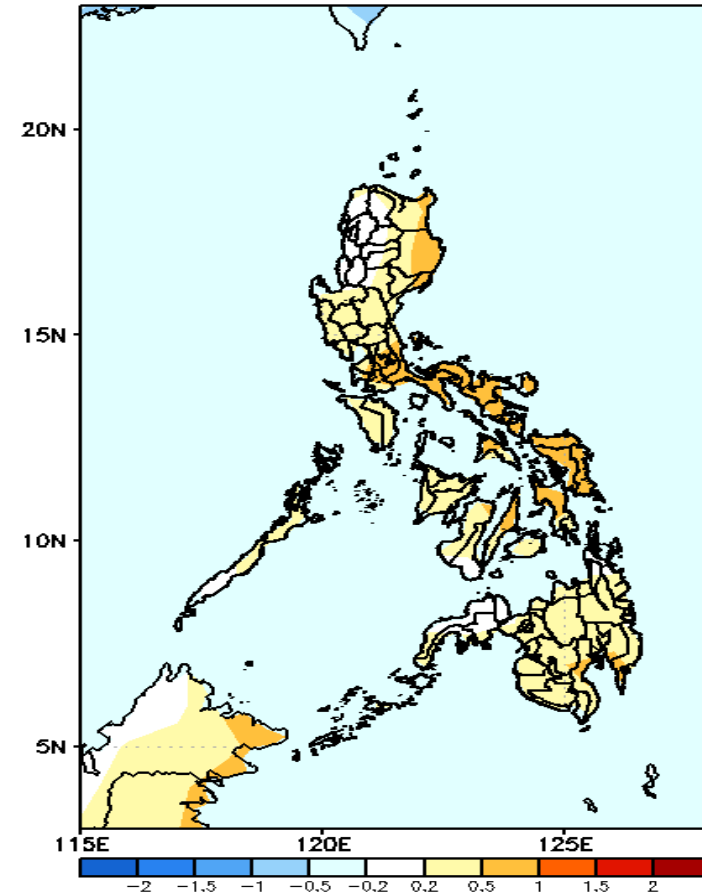
GEFS Week-1 T2m Anomaly
Valid: 20200326 - 20200401



2m Temperature Week 1: March 26- April 01, 2020

Warmer than average surface air temperature will likely experience in Luzon while near to slightly warmer than average surface air temperature is expected in Visayas and Mindanao during the forecast period.

GEFS Week-2 T2m Anomaly
Valid: 20200402 - 20200408



2m Temperature Week 1: April 02- April 08, 2020

Near to slightly warmer than average surface air temperature will likely experience in most parts of the country during the forecast period.