



USAID
FROM THE AMERICAN PEOPLE



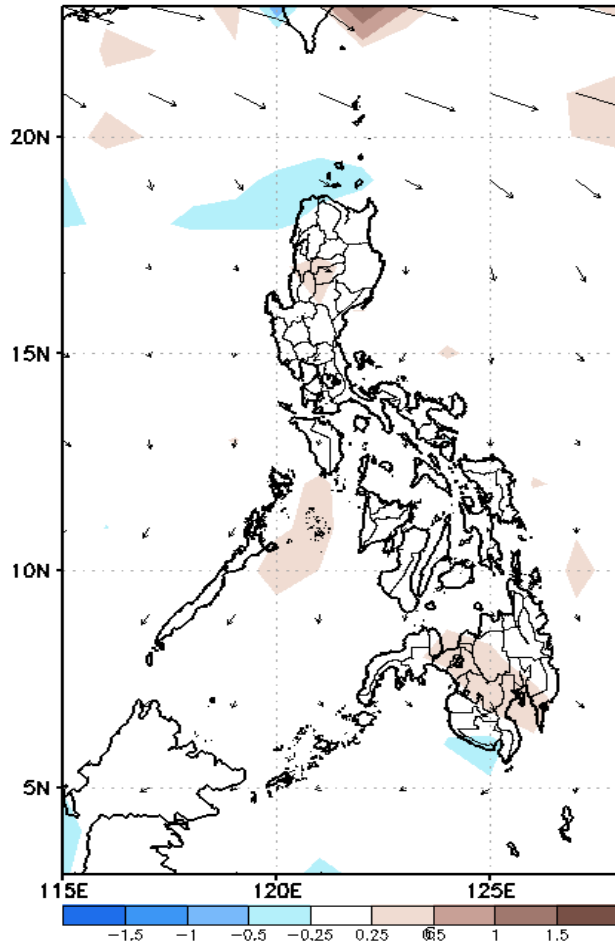
Week 1 & Week 2 Forecast for the Philippines using GEFS Model



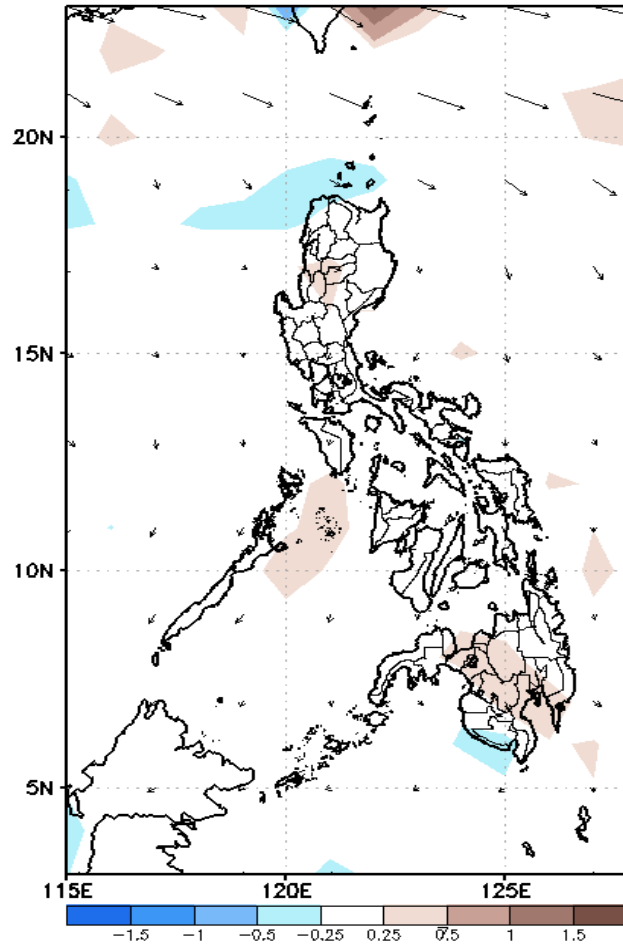
GEFS Week-1 Forecasts: Divergence & Wind Anomaly

Week 1: March 30- April 05, 2020

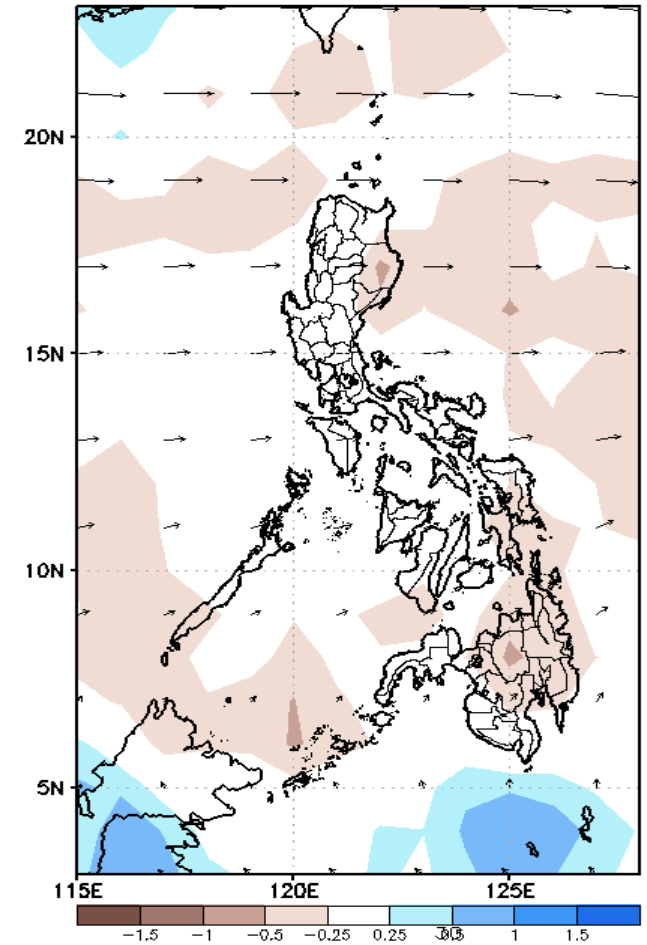
GEFS Week-1 850-hPa Divergence and Wind Anom
Valid: 20200330 - 20200405



GEFS Week-1 700-hPa Divergence and Wind Anom
Valid: 20200330 - 20200405



GEFS Week-1 200-hPa Divergence and Wind Anom
Valid: 20200330 - 20200405

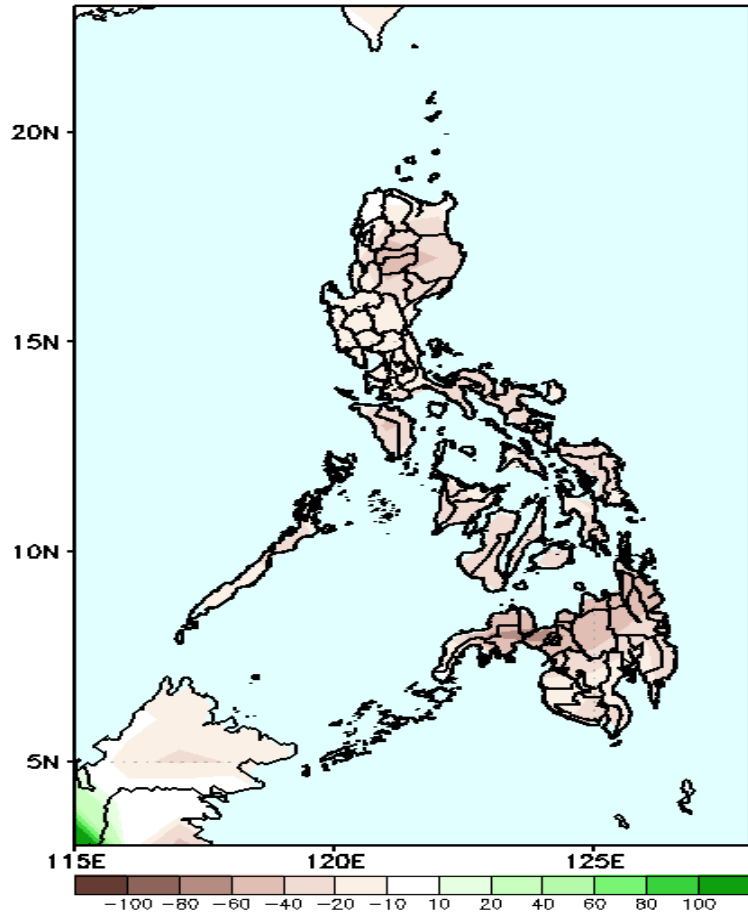


Low level (850 hPa) Divergence show less likelihood of precipitation in most parts of the country. Easterlies affecting the whole country during the forecast period.

Precipitation Anomaly and Exceedance Probability > 25/50 mm

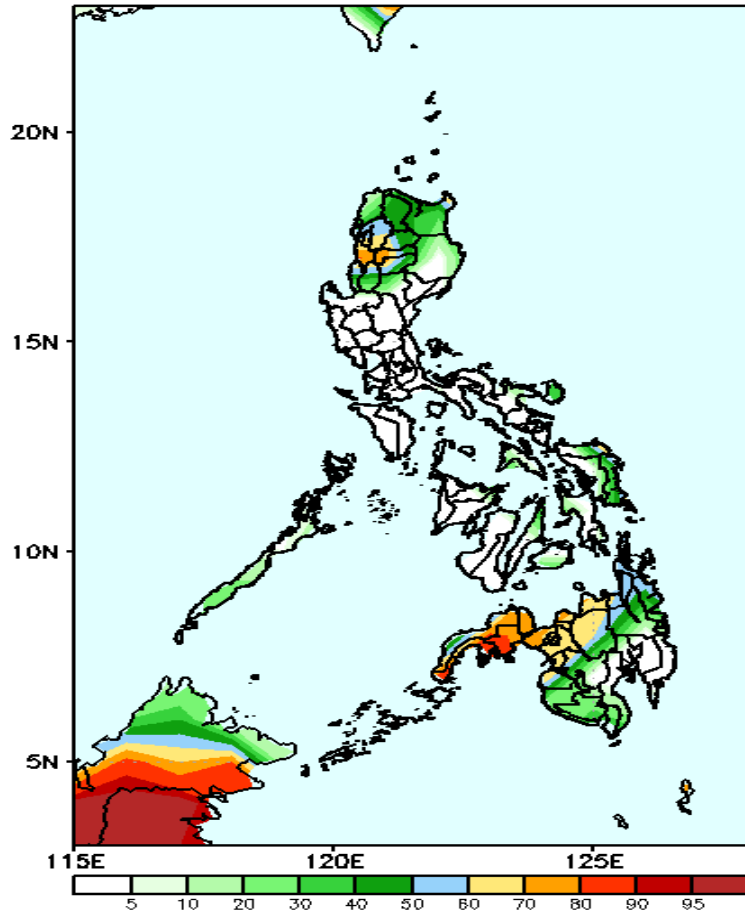
Week 1: March 30- April 05, 2020

GEFS Week-1 Precip Anomaly
Valid: 20200330 - 20200405



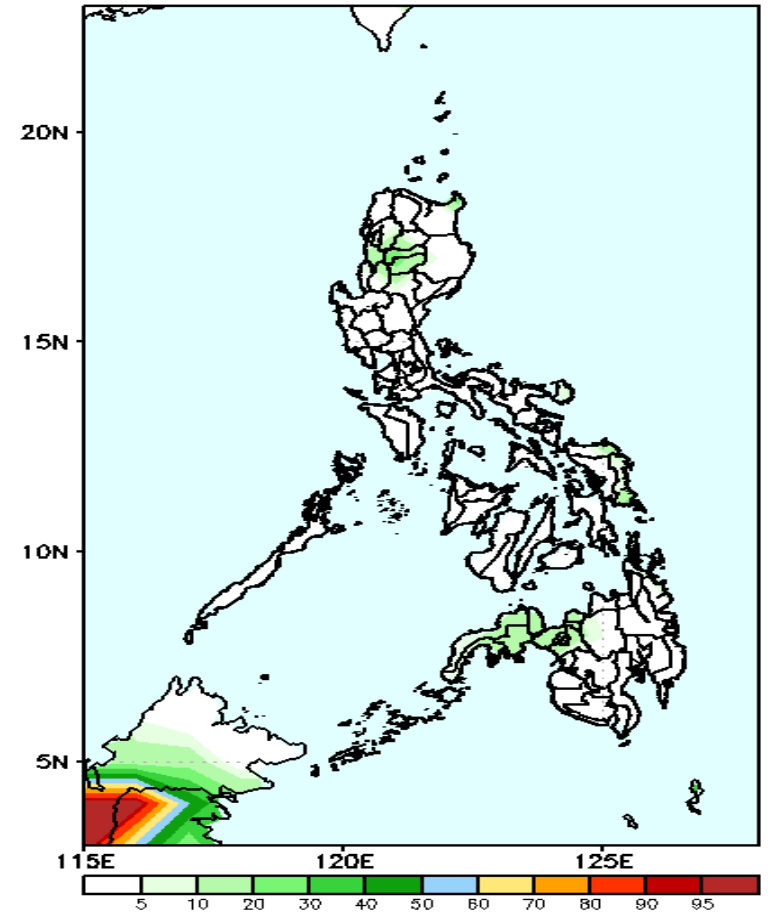
Rainfall deficit of up to 40mm is most likely in most parts of the country during the forecast period.

GEFS Week-1 Exceedance Prob. > 25mm
Valid: 20200330 - 20200405



60-80% probability of rainfall to exceed 25mm in northwestern Luzon, Zamboanga Peninsula and northern Mindanao while less likely for the rest of the country during the forecast period.

GEFS Week-1 Exceedance Prob. > 50mm
Valid: 20200330 - 20200405



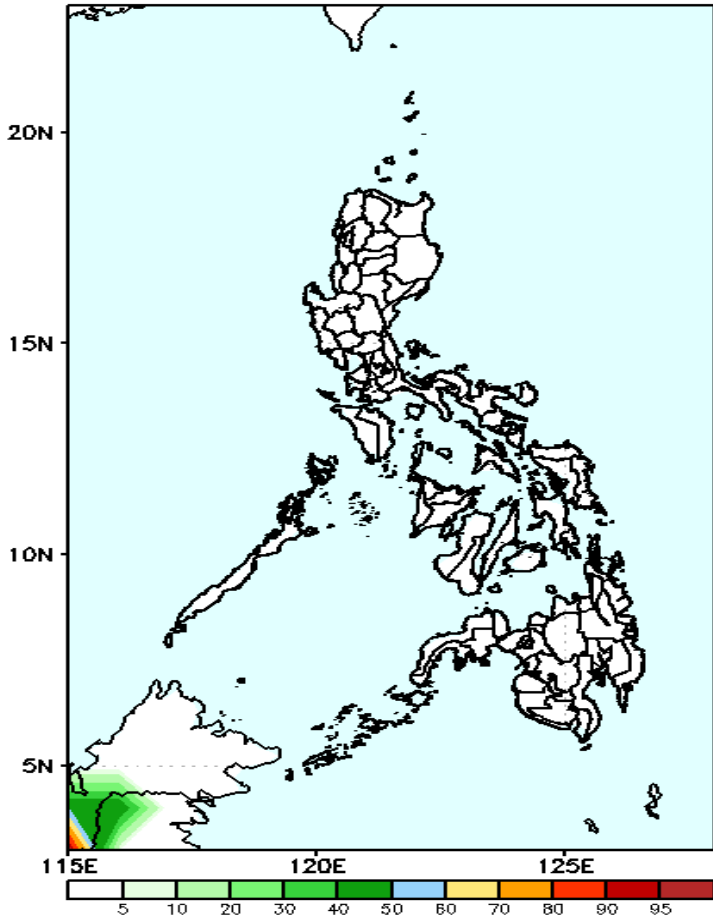
Less probability of rainfall to exceed 50mm in most parts of the country during the forecast period.



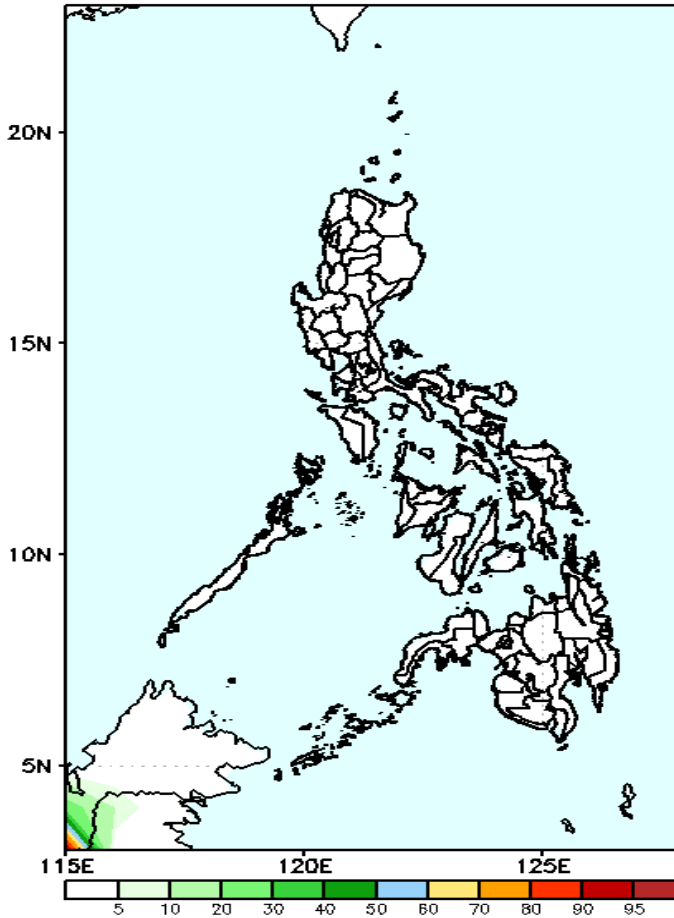
Exceedance Probability > 100/150/200 mm

Week 1: March 30- April 05, 2020

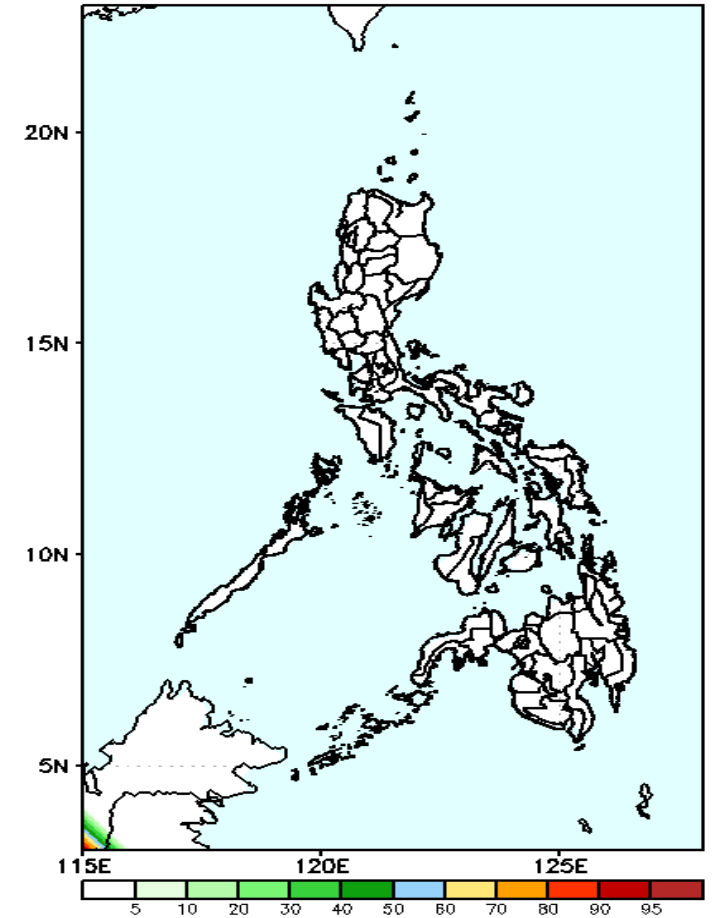
GEFS Week-1 Exceedance Prob. > 100mm
Valid: 20200330 - 20200405



GEFS Week-1 Exceedance Prob. > 150mm
Valid: 20200330 - 20200405



GEFS Week-1 Exceedance Prob. > 200mm
Valid: 20200330 - 20200405



Less probability of rainfall to exceed 100mm in most parts of the country during the forecast period.

Less probability of rainfall to exceed 150mm in most parts of the country during the forecast period.

Less probability of rainfall to exceed 200mm in most parts of the country during the forecast period.



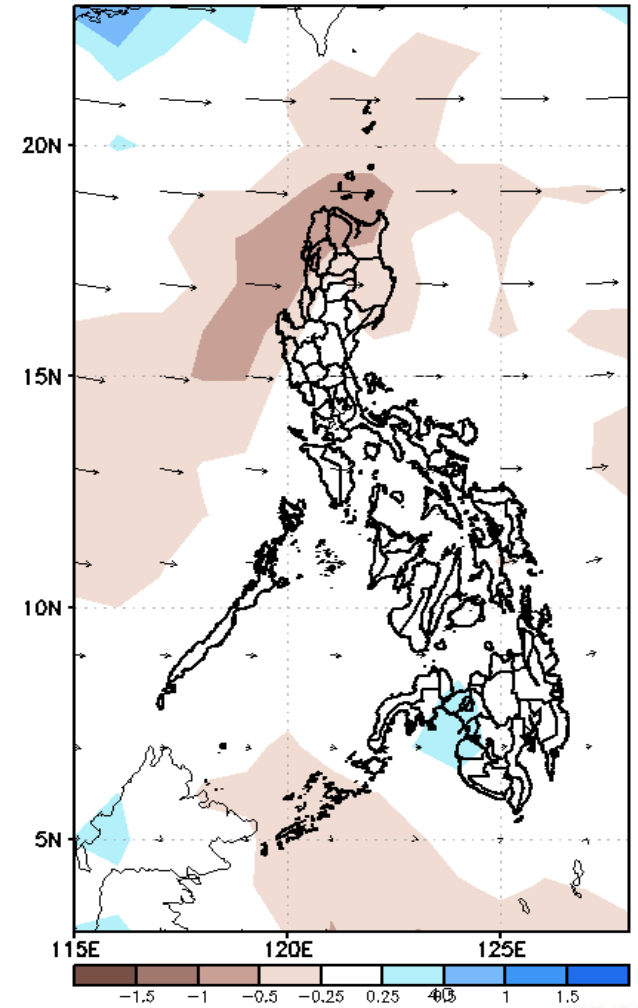
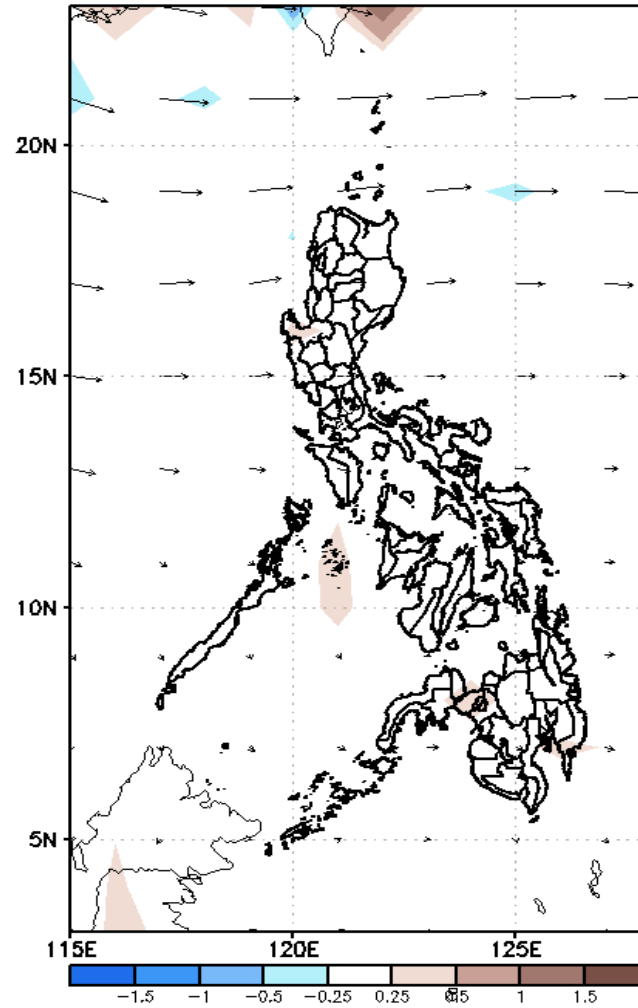
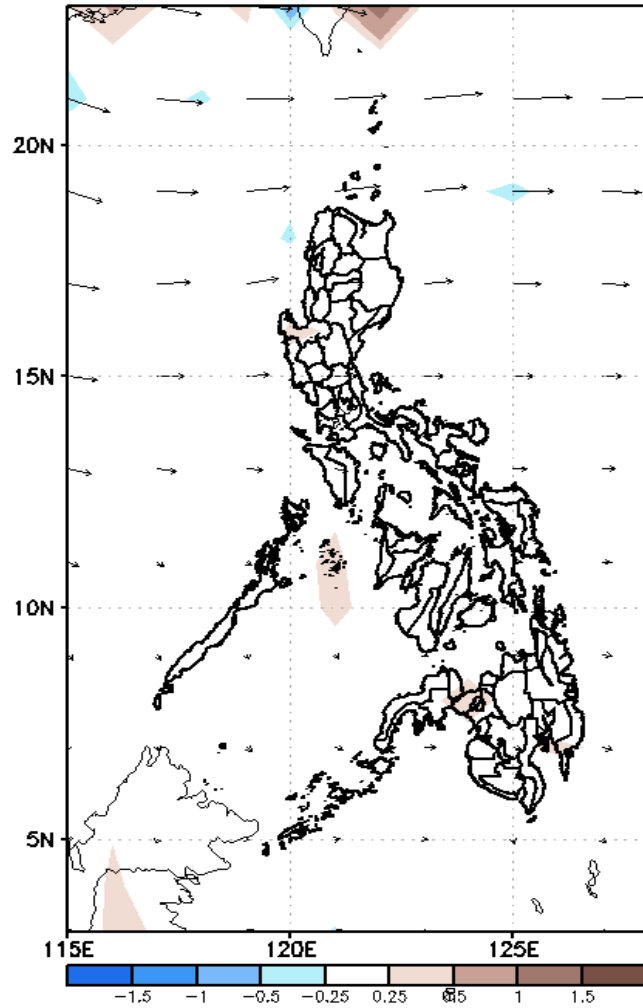
GEFS Week-2 Forecasts: Divergence & Wind Anomaly

Week 2: April 06- April 12, 2020

GEFS Week-2 850-hPa Divergence and Wind Anom
Valid: 20200406 - 20200412

GEFS Week-2 700-hPa Divergence and Wind Anom
Valid: 20200406 - 20200412

GEFS week-2 200-hPa Divergence and Wind Anom
Valid: 20200406 - 20200412



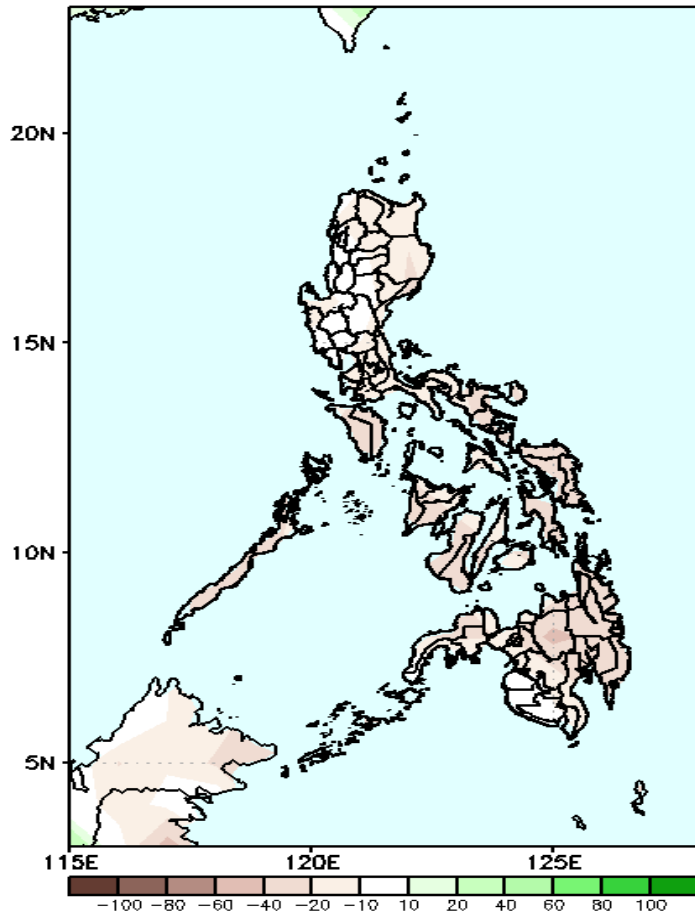
Payong

Low level (850 hPa) Divergence show likelihood of precipitation in some parts of Luzon and Mindanao due to localized thunderstorm. Easterlies affecting most parts of the country during the forecast period.

Precipitation Anomaly and Exceedance Probability > 25/50 mm

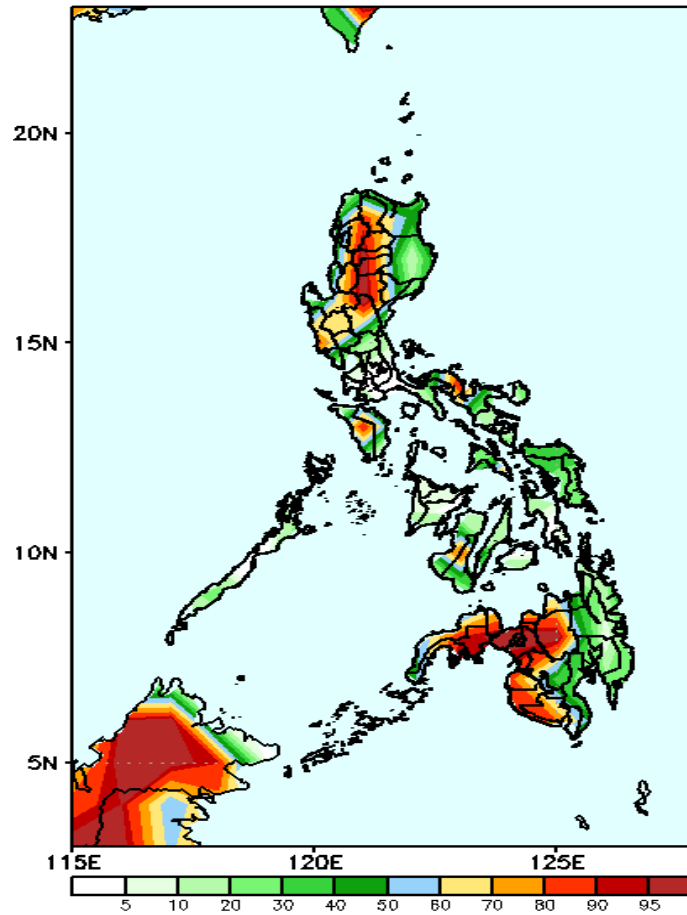
Week 2: April 06- April 12, 2020

GEFS Week-2 Precip Anomaly
Valid: 20200406 - 20200412



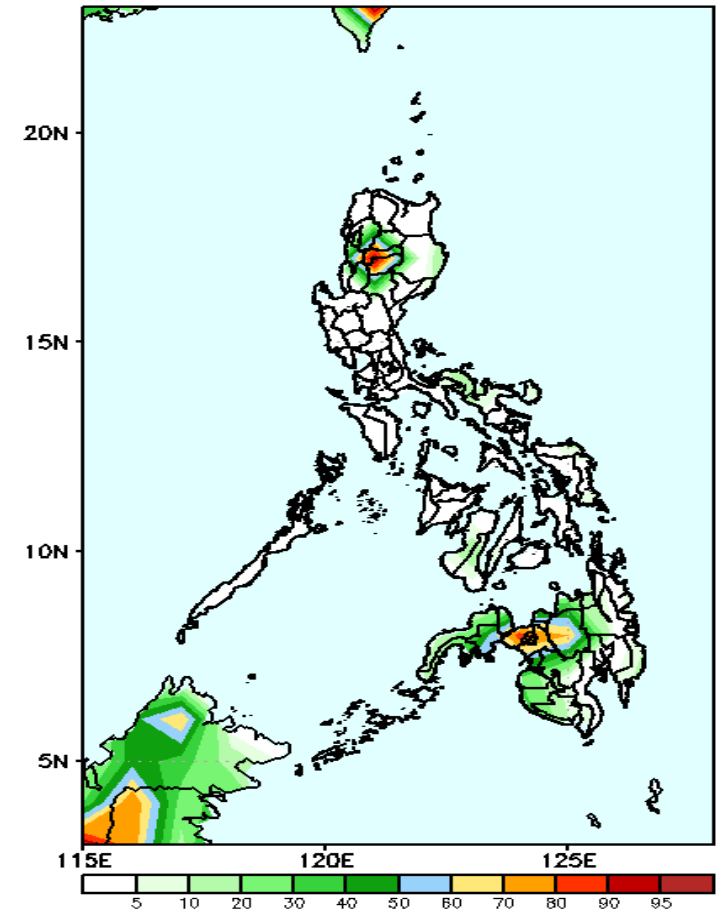
Rainfall deficit of up to 40mm is most likely in most parts of the country during the forecast period.

GEFS Week-2 Exceedance Prob. > 25mm
Valid: 20200406 - 20200412



60-95% probabilities for rainfall exceeding 25mm in western Luzon and western Mindanao while less probability for the rest of the country during the forecast period.

GEFS Week-2 Exceedance Prob. > 50mm
Valid: 20200406 - 20200412

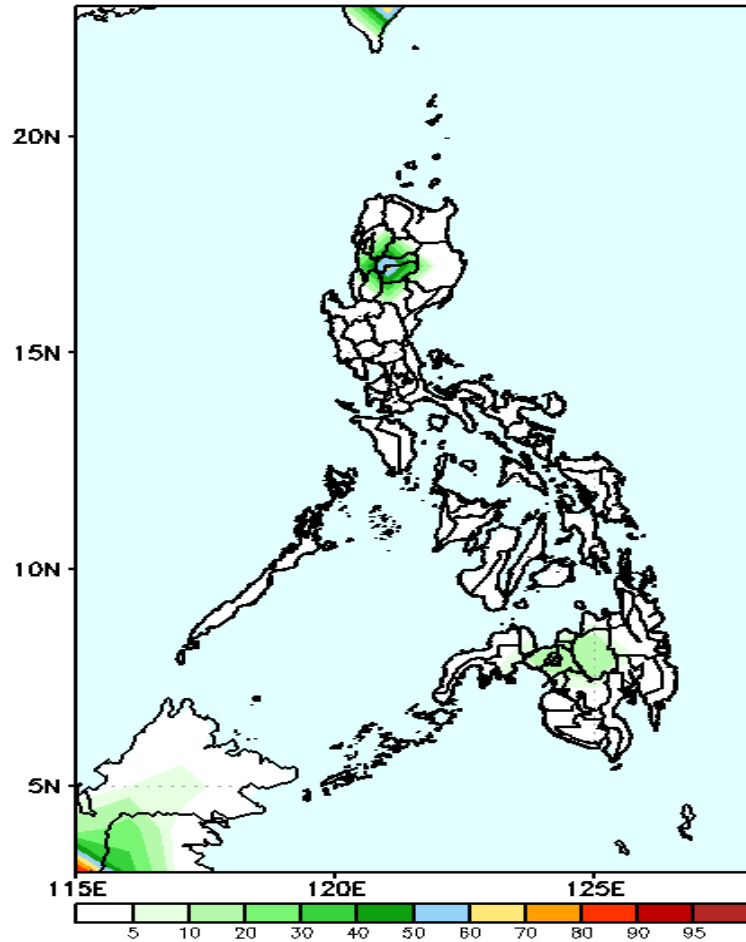


70-90 % probabilities for rainfall exceeding 50mm in CAR and northern Mindanao while less probability for the rest of the country during the forecast period.

Exceedance Probability > 100/150/200 mm

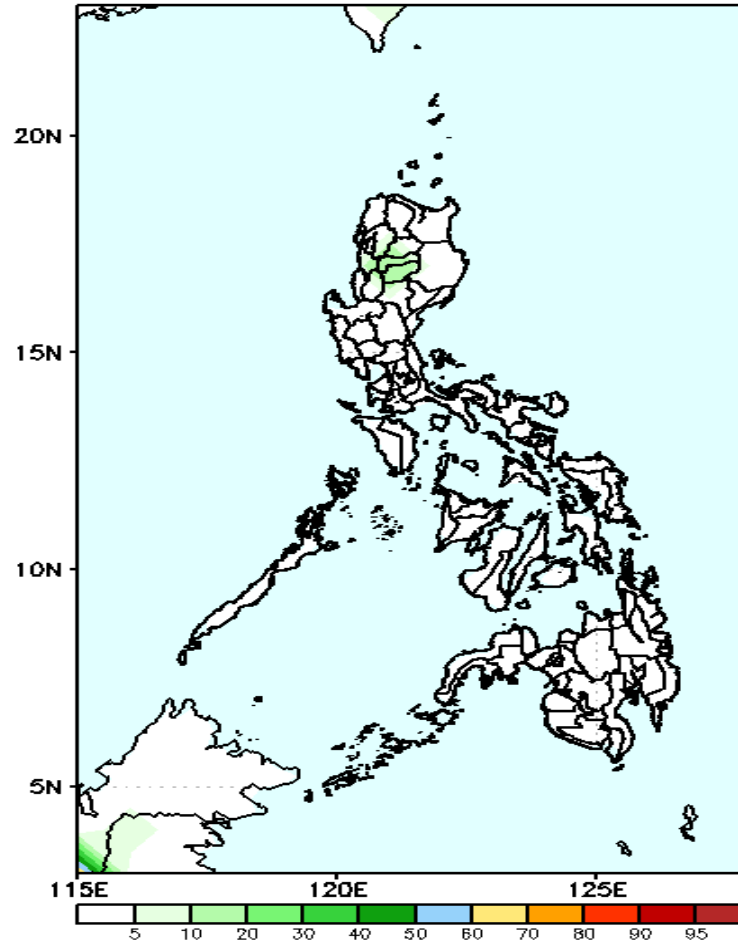
Week 2: April 06- April 12, 2020

GEFS Week-2 Exceedance Prob. > 100mm
Valid: 20200406 - 20200412



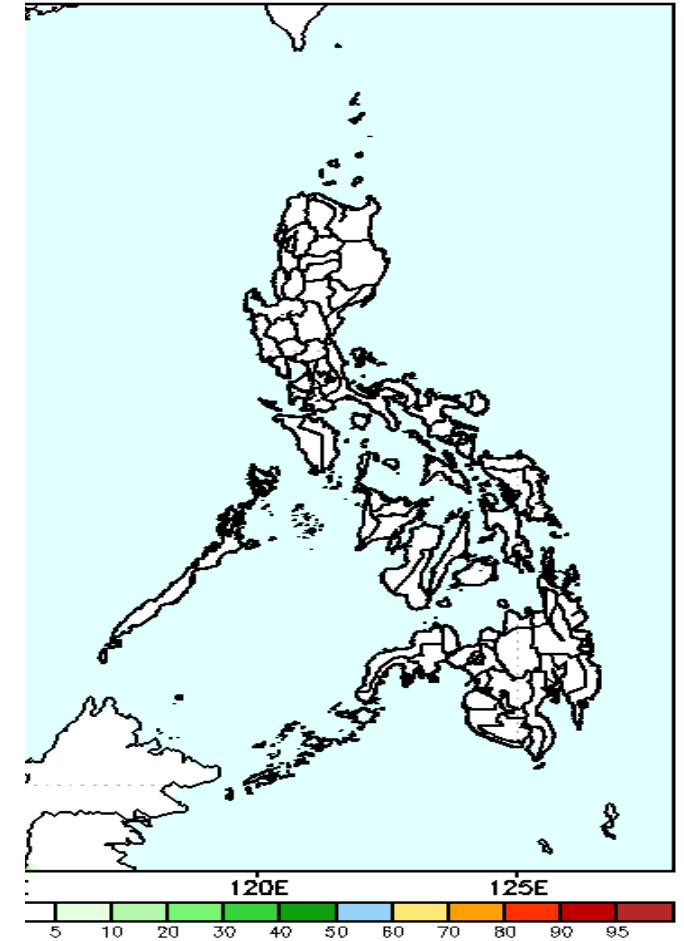
Less probability of rainfall to exceed 100mm in most parts of the country during the forecast period.

GEFS Week-2 Exceedance Prob. > 150mm
Valid: 20200406 - 20200412



Less probability of rainfall to exceed 150mm in most parts of the country during the forecast period.

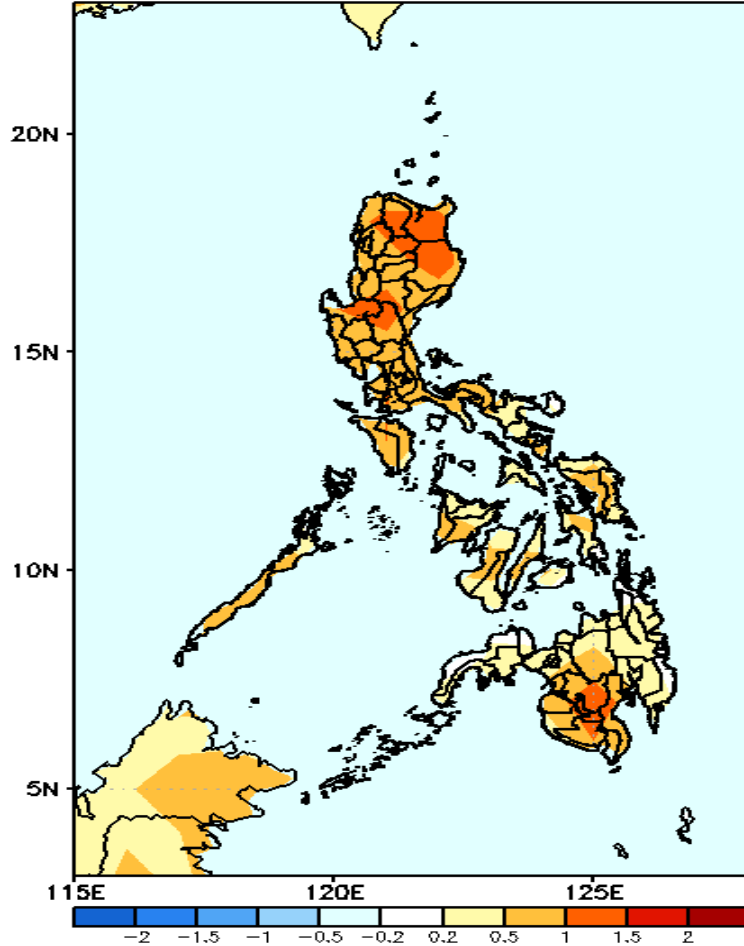
Week-2 Exceedance Prob. > 200mm
Valid: 20200406 - 20200412



Less probability of rainfall to exceed 200mm in most parts of the country during the forecast period.

GEFS Week-1 & 2 Forecasts: T2m Anomaly

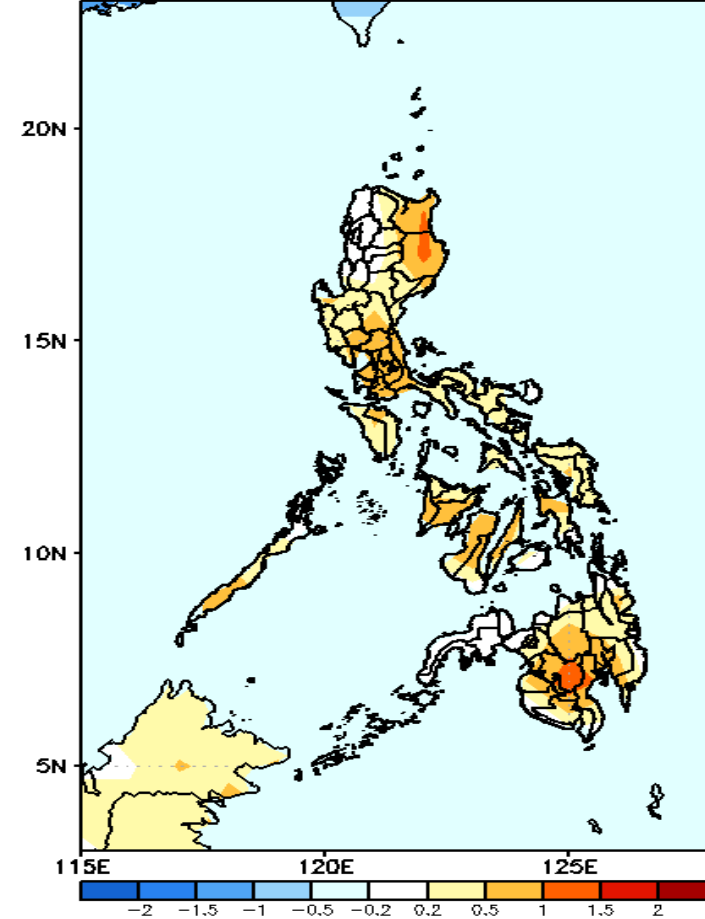
GEFS Week-1 T2m Anomaly
Valid: 20200330 - 20200405



2m Temperature Week 1: March 30- April 05, 2020

Slightly warmer to warmer than average surface air temperature will likely experience in most parts of the country during the forecast period.

GEFS Week-2 T2m Anomaly
Valid: 20200406 - 20200412



2m Temperature Week 1: April 06- April 12, 2020

Near to slightly warmer than average surface air temperature will likely experience in most parts of the country during the forecast period.