



**USAID**  
FROM THE AMERICAN PEOPLE



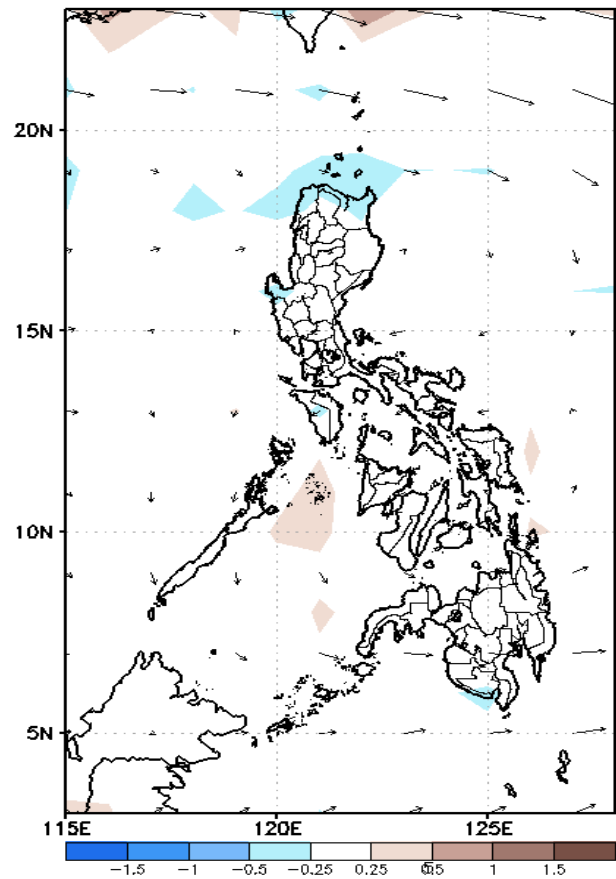
# Week 1 & Week 2 Forecast for the Philippines using GEFS Model



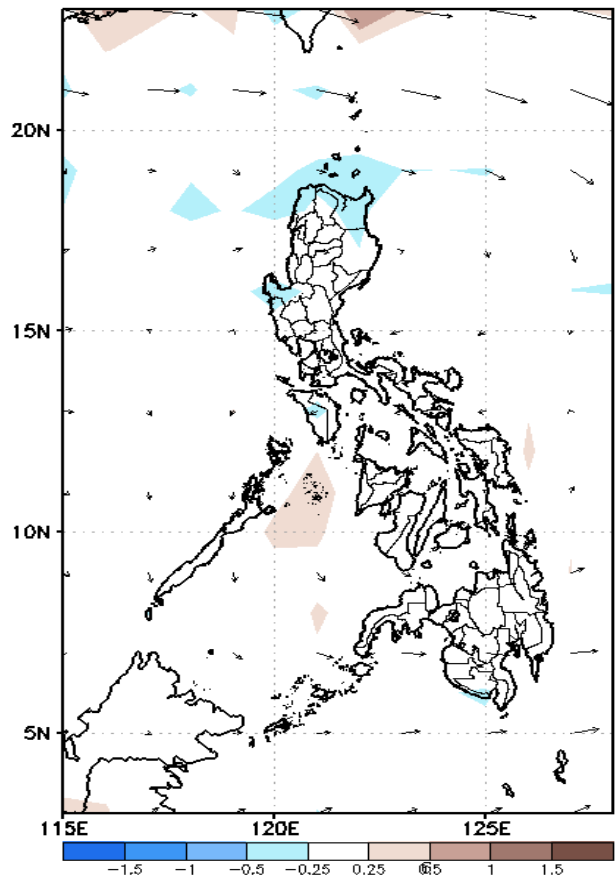
# GEFS Week-1 Forecasts: Divergence & Wind Anomaly

Week 1: March 19 – March 25, 2020

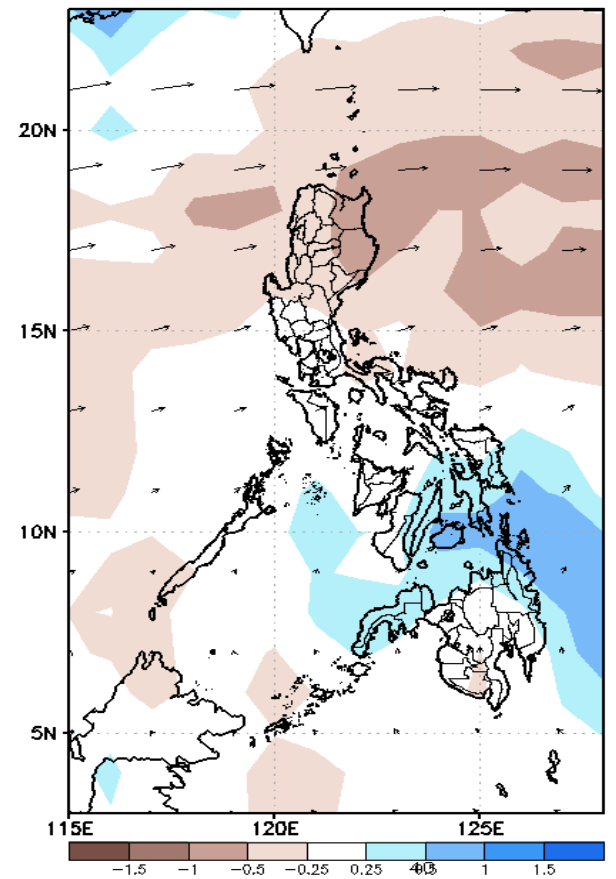
GEFS Week-1 850-hPa Divergence and Wind Anom  
Valid: 20200319 – 20200325



GEFS Week-1 700-hPa Divergence and Wind Anom  
Valid: 20200319 – 20200325



GEFS Week-1 200-hPa Divergence and Wind Anom  
Valid: 20200319 – 20200325

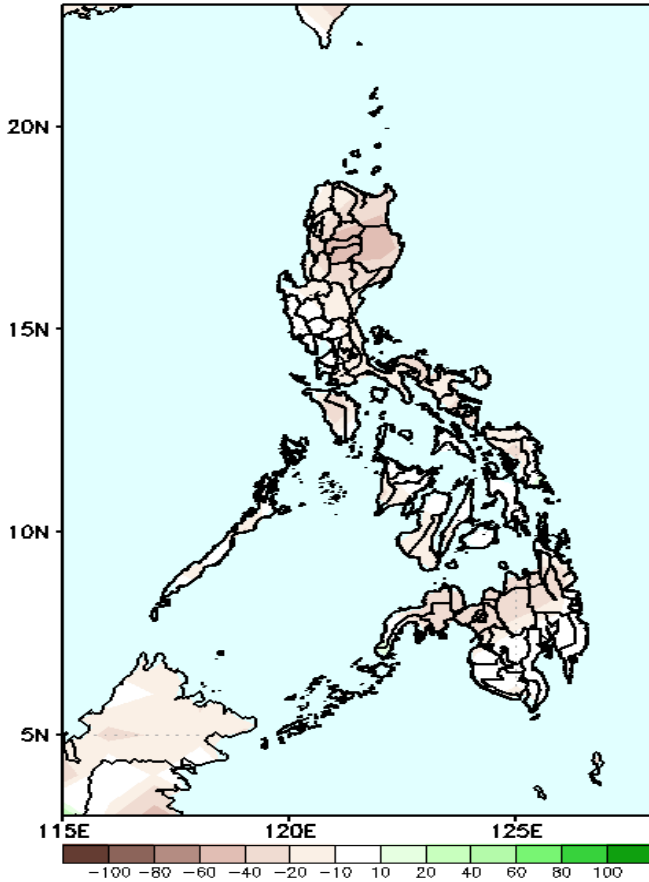


Low level (850 hPa) Divergence show less likelihood of precipitation in most parts of the country. Easterlies affecting most parts of the country during the forecast period.

# Precipitation Anomaly and Exceedance Probability > 25/50 mm

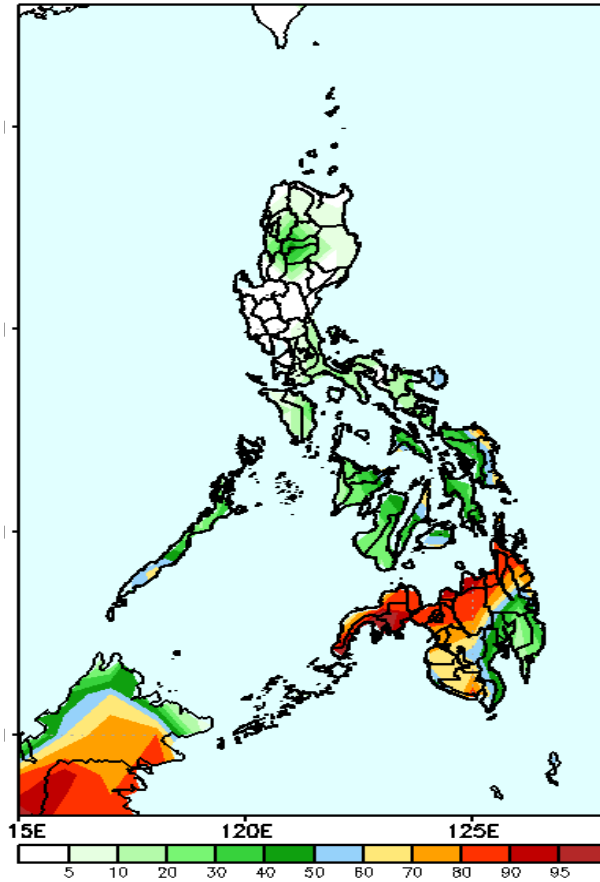
Week 1: March 19 – March 25, 2020

GEFS Week-1 Precip Anomaly  
Valid: 20200319 – 20200325



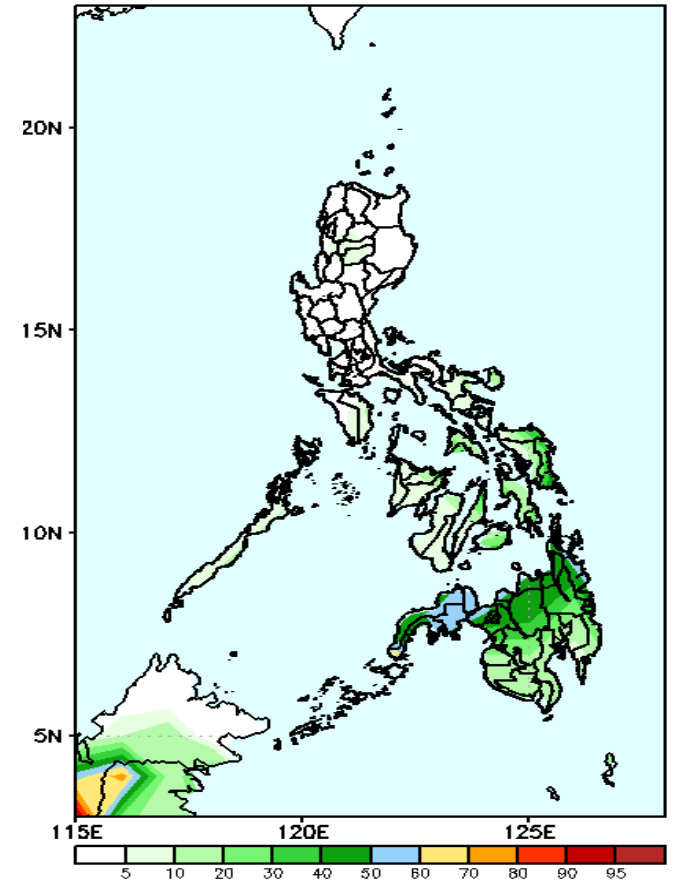
Rainfall deficit of up to 60mm is likely in most parts of the country during the forecast period.

FS Week-1 Exceedance Prob. > 25mm  
Valid: 20200319 – 20200325



High probability of rainfall to exceed 25mm in northern and western parts of Mindanao while less likely for the rest of the country during the forecast period.

GEFS Week-1 Exceedance Prob. > 50mm  
Valid: 20200319 – 20200325

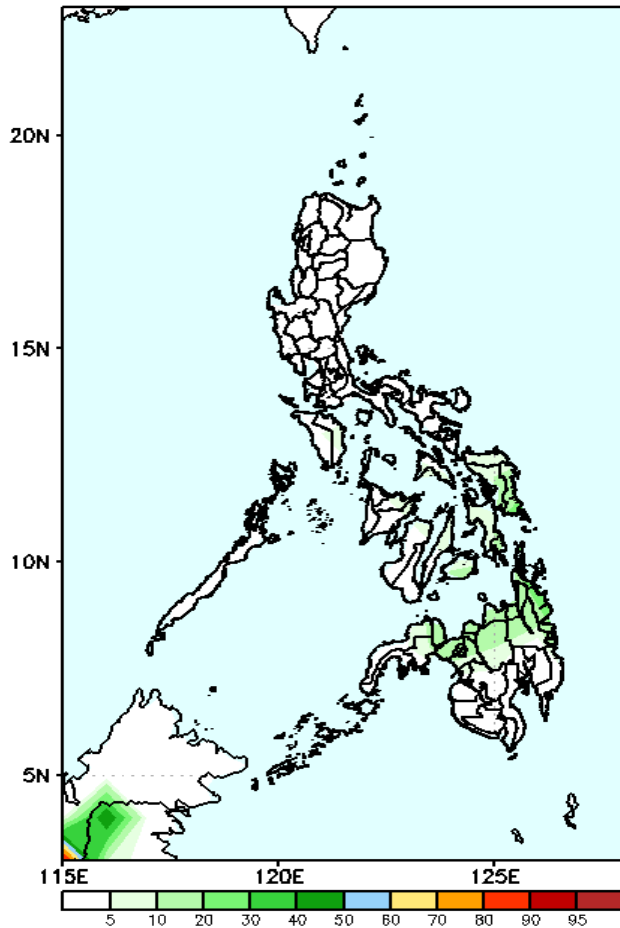


30-60% probability of rainfall to exceed 50mm in Mindanao and eastern Visayas while less likely for the rest of the country during the forecast period.

# Exceedance Probability > 100/150/200 mm

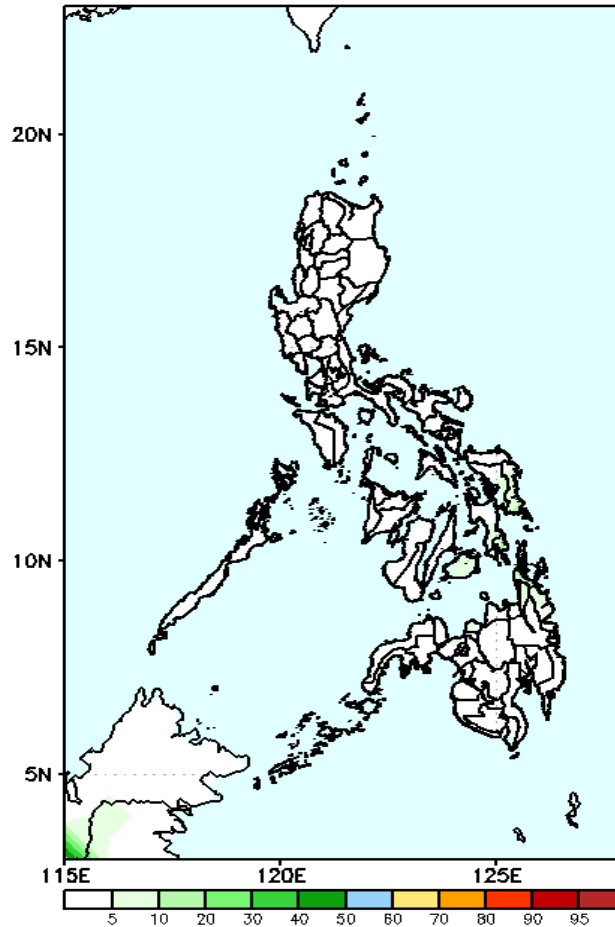
Week 1: March 19 – March 25, 2020

GEFS Week-1 Exceedance Prob. > 100mm  
Valid: 20200319 – 20200325



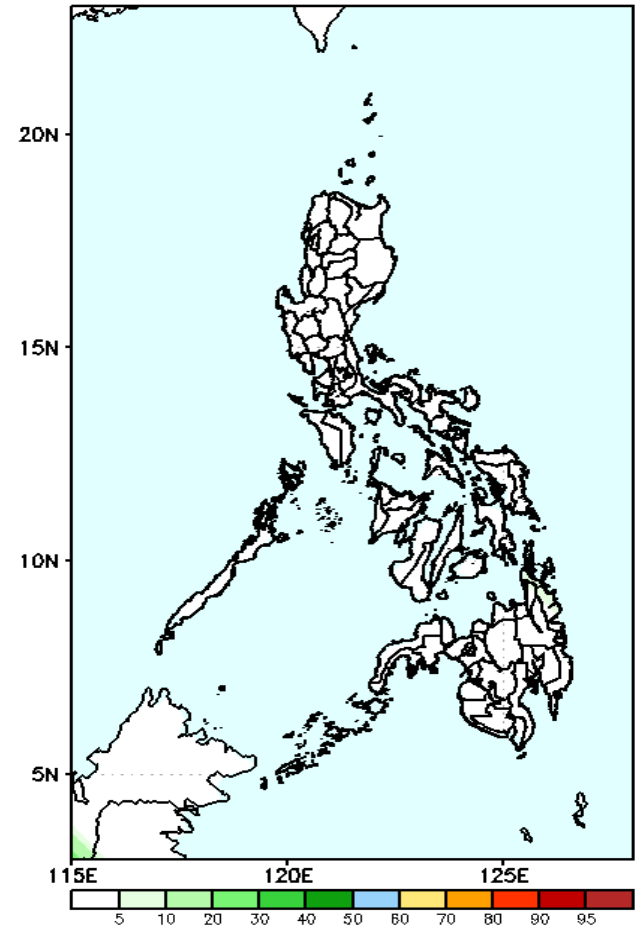
Less probability of rainfall to exceed 100mm in most parts of the country during the forecast period.

GEFS Week-1 Exceedance Prob. > 150mm  
Valid: 20200319 – 20200325



Less probability of rainfall to exceed 150mm in most parts of the country during the forecast period.

GEFS Week-1 Exceedance Prob. > 200mm  
Valid: 20200319 – 20200325

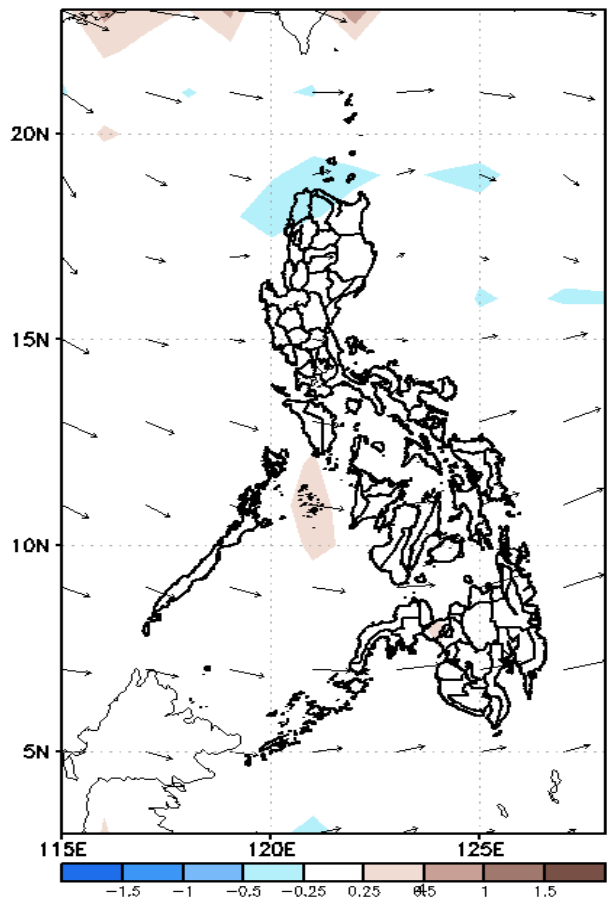


Less probability of rainfall to exceed 200mm in most parts of the country during the forecast period.

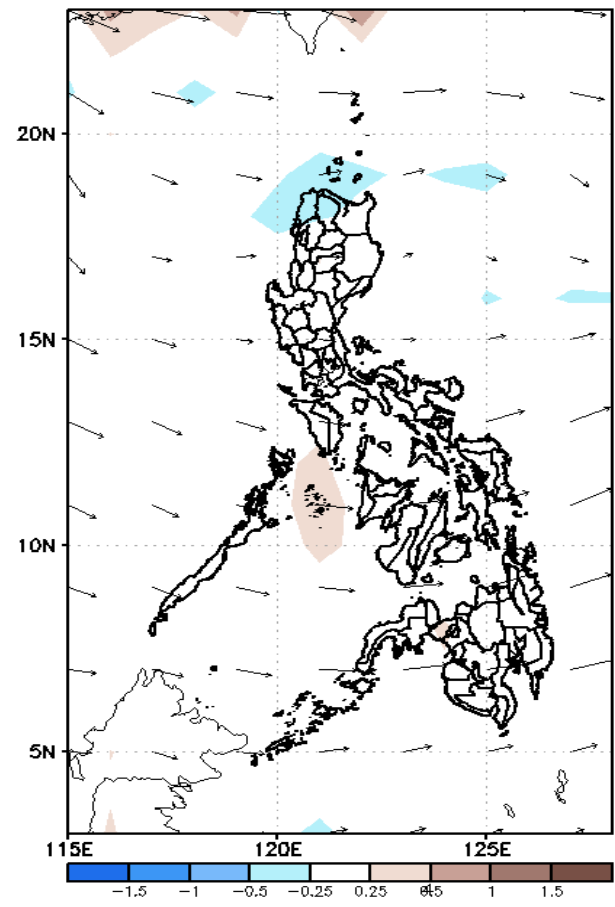
# GEFS Week-2 Forecasts: Divergence & Wind

Week 2: March 26 – April 01, 2020

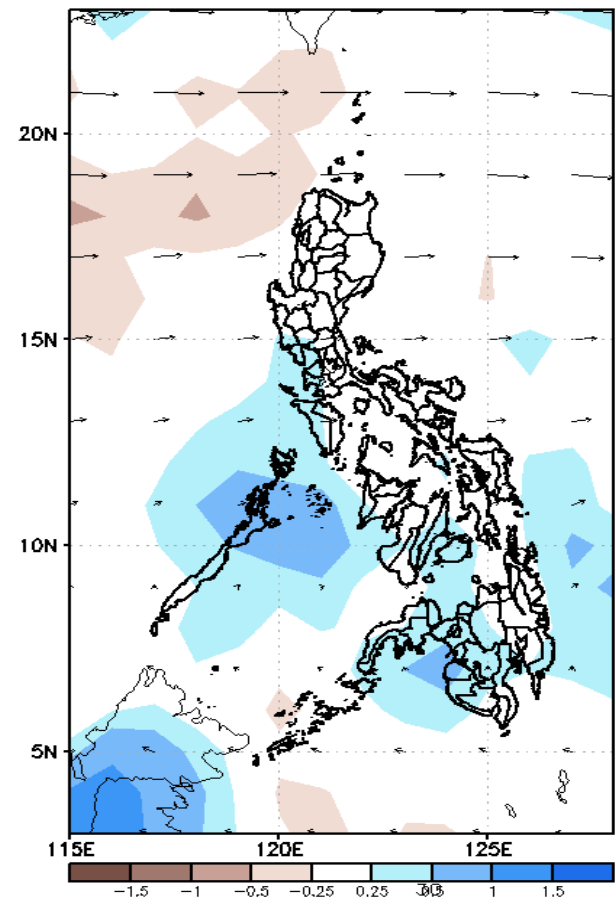
GEFS Week-2 850-hPa Divergence and Wind Anom: Valid: 20200326 – 20200401



GEFS Week-2 700-hPa Divergence and Wind Anom: Valid: 20200326 – 20200401



GEFS week-2 200-hPa Divergence and Wind Anom: Valid: 20200326 – 20200401

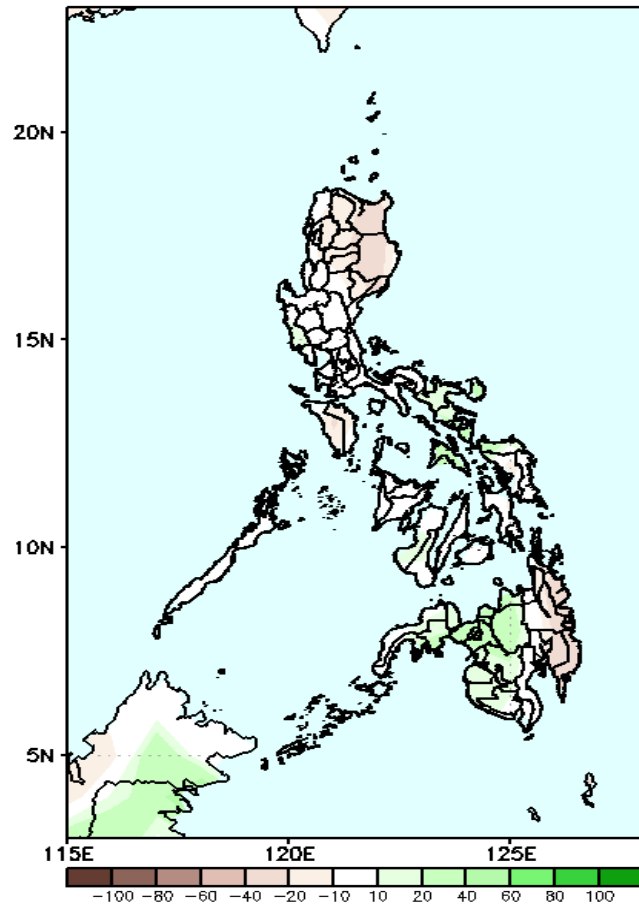


Low level (850 hPa) Divergence show less likelihood of precipitation in most parts of the country. Easterlies affecting most parts of the country during the forecast period.

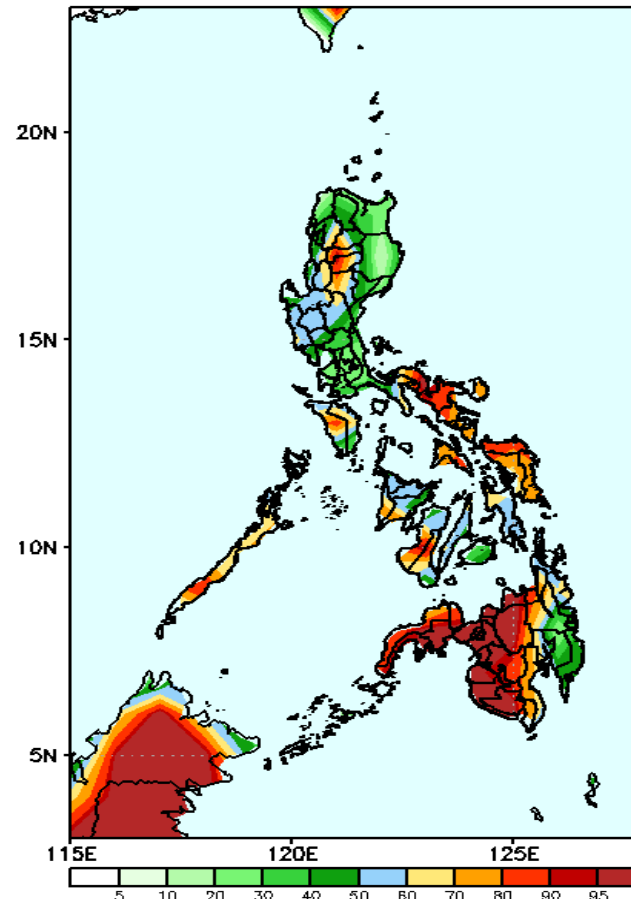
# Precipitation Anomaly and Exceedance Probability > 25/50 mm

Week 2: March 26 – April 01, 2020

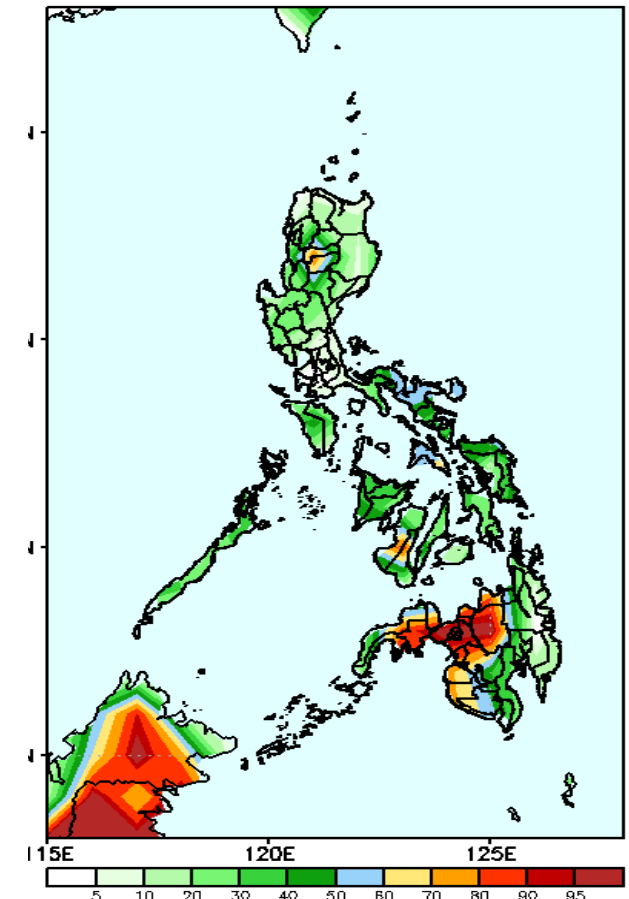
GEFS Week-2 Precip Anomaly  
Valid: 20200326 – 20200401



GEFS Week-2 Exceedance Prob. > 25mm  
Valid: 20200326 – 20200401



GEFS Week-2 Exceedance Prob. > 50mm  
Valid: 20200326 – 20200401



Rainfall deficit of up to 40mm is likely in most parts of the country except in northern Mindanao where more than 30-40mm rainfall is expected during the forecast period.

High probabilities for rainfall exceeding 25mm in Mindanao (except in the eastern part), CAR, Bicol Region and Eastern Visayas while 40-70% for the rest of the country.

High probabilities for rainfall exceeding 50mm in Northern Mindanao and Zamboanga del Sur while less likely for the rest of the country.

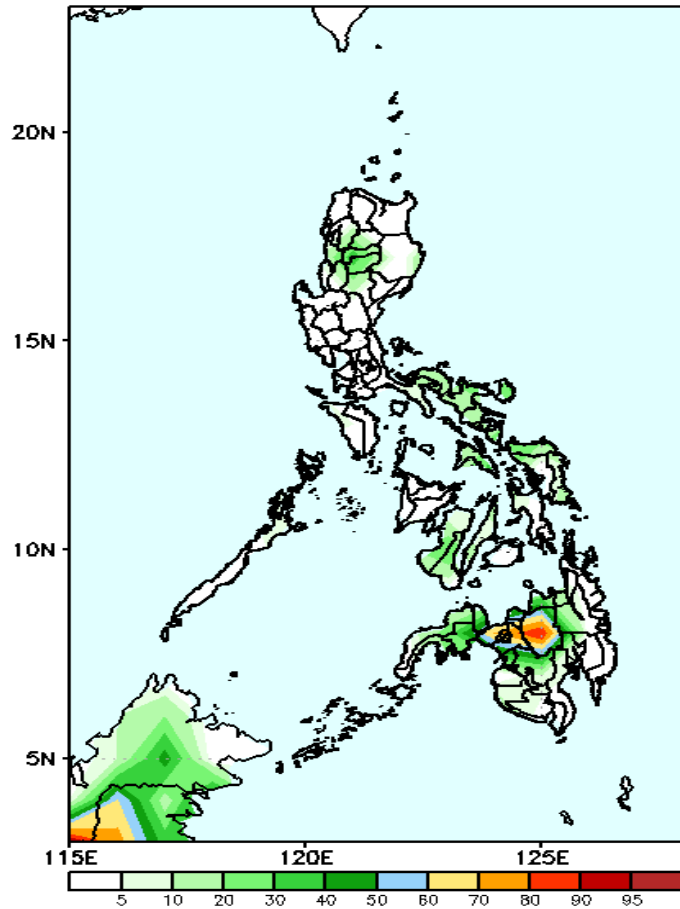




# Exceedance Probability > 100/150/200 mm

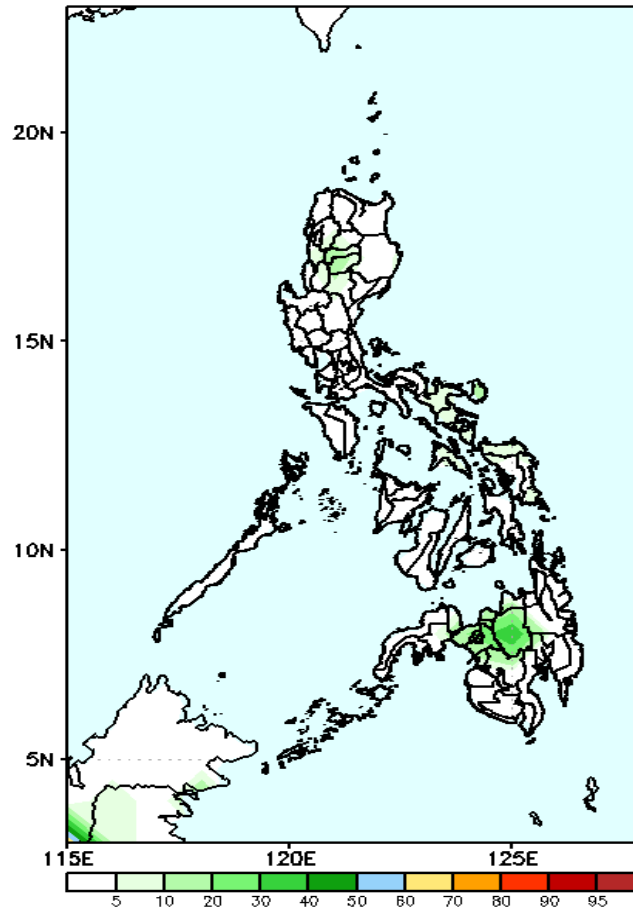
## Week 2: March 26 – April 01, 2020

GEFS Week-2 Exceedance Prob. > 100mm  
Valid: 20200326 – 20200401



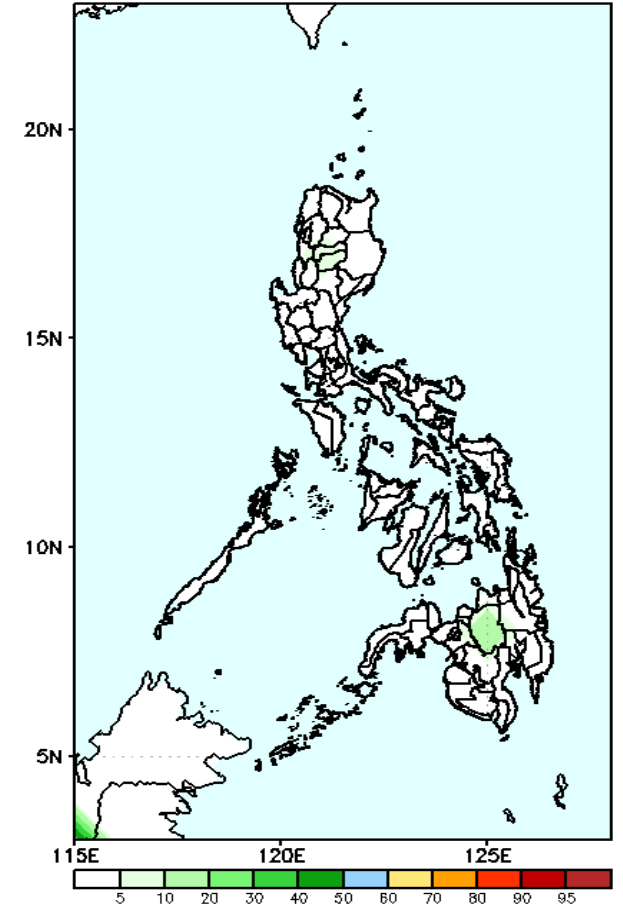
70-90% probability of rainfall to exceed 100mm in Bukidnon while less likely for the rest of the country during the forecast period.

GEFS Week-2 Exceedance Prob. > 150mm  
Valid: 20200326 – 20200401



Less probability of rainfall to exceed 150mm in most parts of the country during the forecast period.

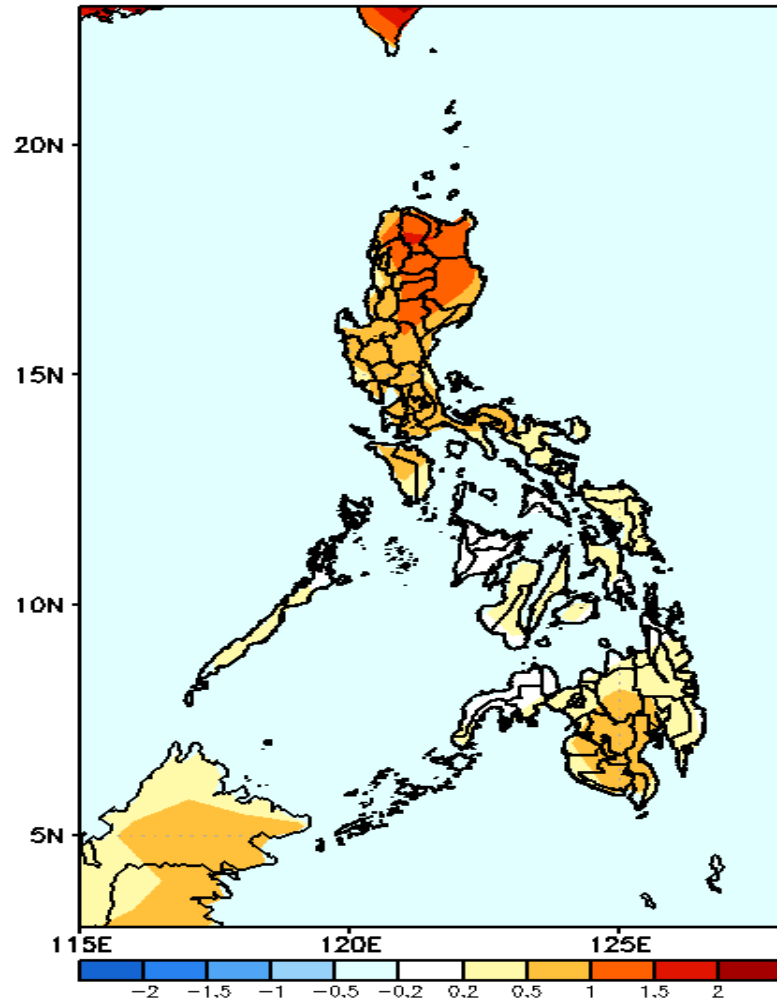
GEFS Week-2 Exceedance Prob. > 200mm  
Valid: 20200326 – 20200401



Less probability of rainfall to exceed 200mm in most parts of the country during the forecast period.

# GEFS Week-1 & 2 Forecasts: T2m Anomaly

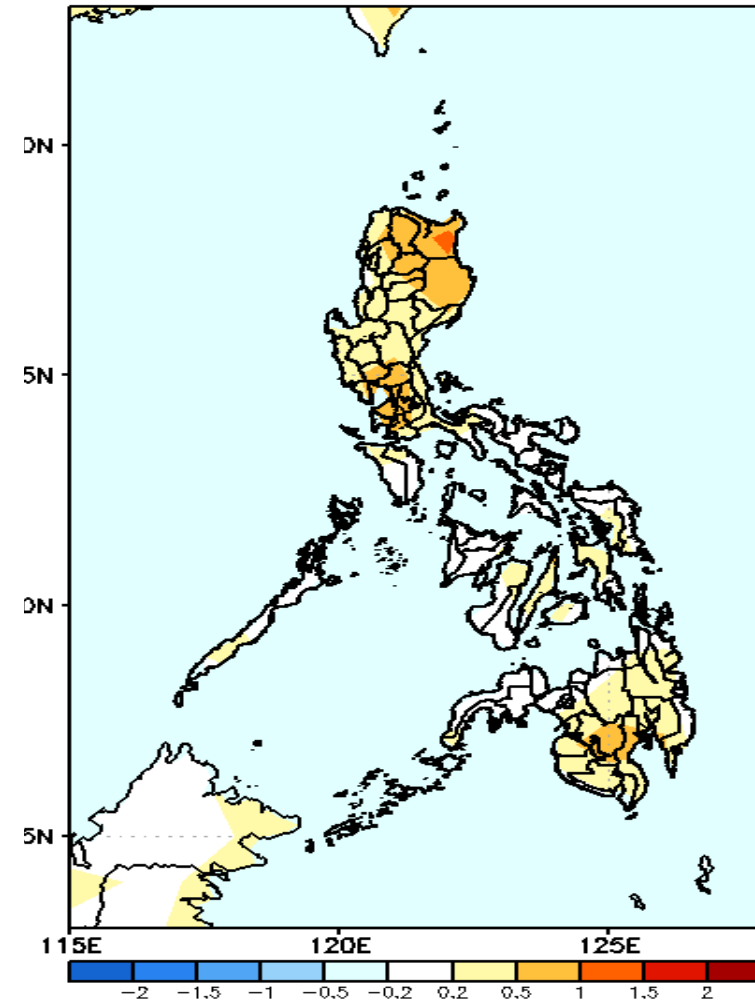
GEFS Week-1 T2m Anomaly  
Valid: 20200319 - 20200325



**2m Temperature Week1: Mar 19 – Mar 25, 2020**

Slightly warmer to warmer than average surface air temperature will likely experience in Luzon while near to slightly warmer than average surface air temperature will likely be experienced in most parts of the country during the forecast period

GEFS Week-2 T2m Anomaly  
Valid: 20200326 - 20200401



**2m Temperature Week1: Mar 26 – Apr01, 2020**

Near to slightly warmer to warmer than average surface air temperature will likely experience in most parts of the country during the forecast period