



DEPARTMENT OF SCIENCE AND TECHNOLOGY
**PHILIPPINE ATMOSPHERIC, GEOPHYSICAL AND
ASTRONOMICAL SERVICES ADMINISTRATION**



WEATHER UPDATE

Wednesday | June 25, 2025 9AM

DOST-PAGASA – ENHANCED INFRARED IMAGE

TROPICAL DEPRESSION

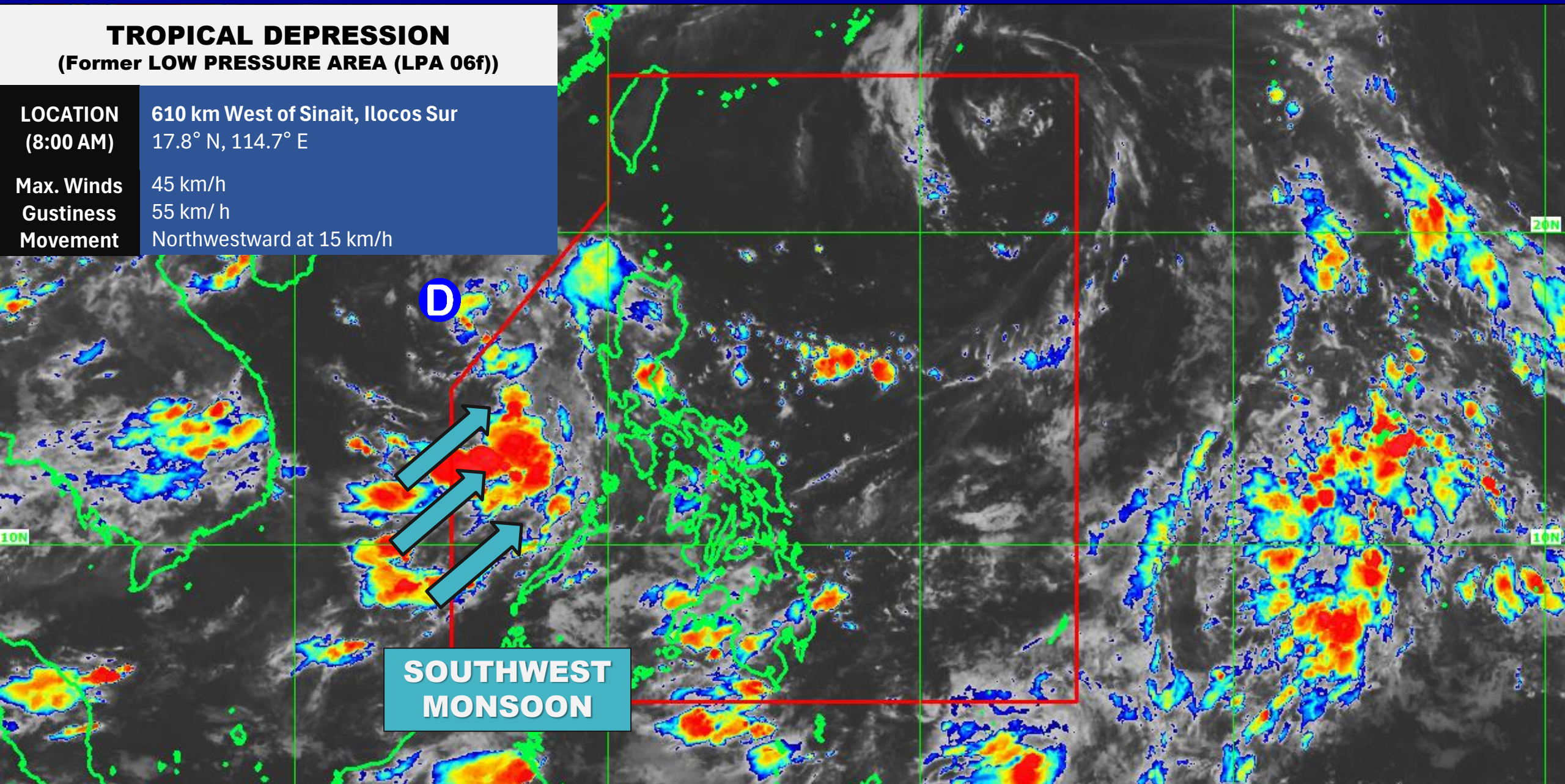
(Former LOW PRESSURE AREA (LPA 06f))

LOCATION 610 km West of Sinait, Ilocos Sur
(8:00 AM) 17.8° N, 114.7° E

Max. Winds 45 km/h

Gustiness 55 km/h

Movement Northwestward at 15 km/h



**SOUTHWEST
MONSOON**

8:00 AM UPDATE 25 JUNE 2025 WEDNESDAY



SEA CONDITION

NO GALE WARNING

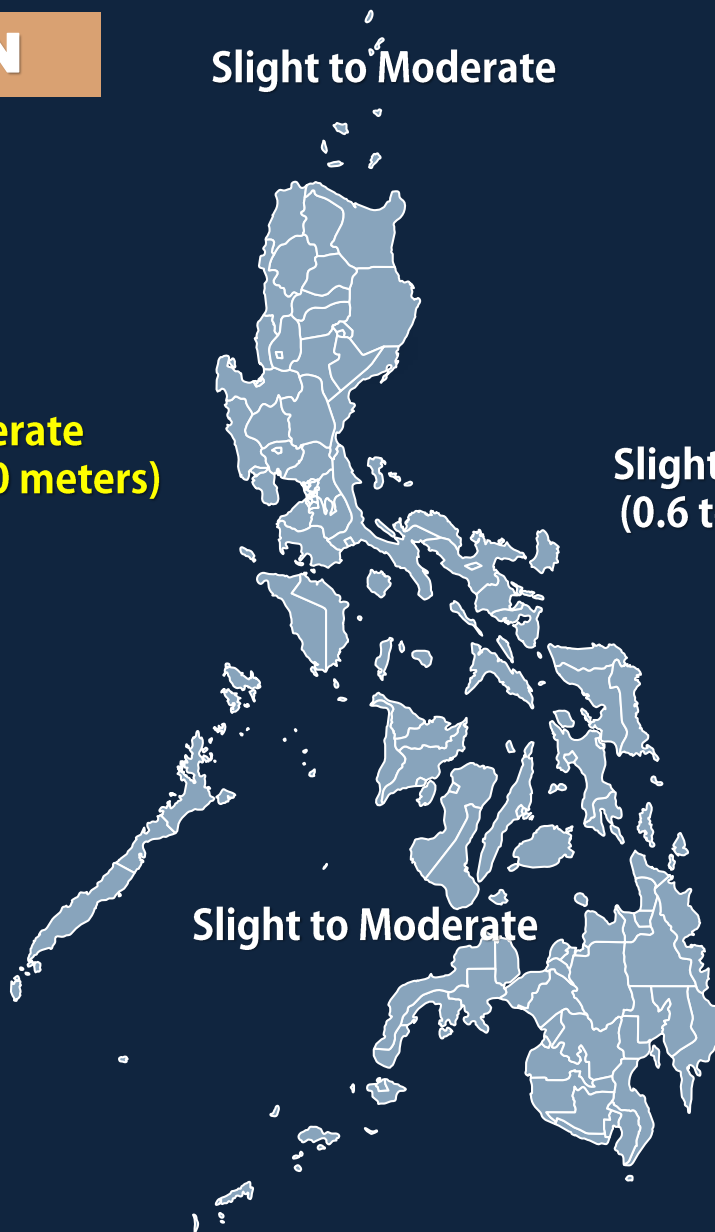
Moderate
(1.5 to 2.0 meters)

Slight to Moderate

Slight to Moderate
(0.6 to 1.5 meters)

Slight to Moderate

Slight to Moderate



5-DAY FORECAST SCENARIO (25-29, JUNE 2025)



- **Today:** With the development of the LPA into a tropical depression outside PAR, the effect of southwest monsoon in the western side of Luzon will be lessened. Cloudy skies with scattered rains is expected over the provinces of Zambales, Bataan, and Palawan.
- **Thursday to Friday:** Southwest Monsoon will continue to affect the areas in the western side of Luzon but probably with the continues movement of the Tropical Cyclone towards southern part of China, expected that the impact of Southwest Monsoon will continue to be lessened. Moderate to heavy rains is possible in Palawan including some areas in Zambales due to the effect of the Southwest Monsoon
- **Saturday to Sunday:** The effect of Southwest Monsoon may continue to bring scattered rains over the western section of Luzon. A possible low pressure area may form in the northeastern part of Luzon. The trough of this possible LPA may bring scattered with moderate to heavy rains over the areas of Bicol Region, Eastern Visayas, Caraga, and Davao Region.
- **Conclusion:** Due to the Southwest Monsoon significant rainfall is still possible over the western section of Luzon. The trough of the possible Low Pressure Area northeast of Luzon may also bring rains over the eastern section of the country.



@dost_pagasa



Dost_pagasa



DOST-PAGASA WEATHER REPORT



bagong.pagasa.dost.gov.ph