

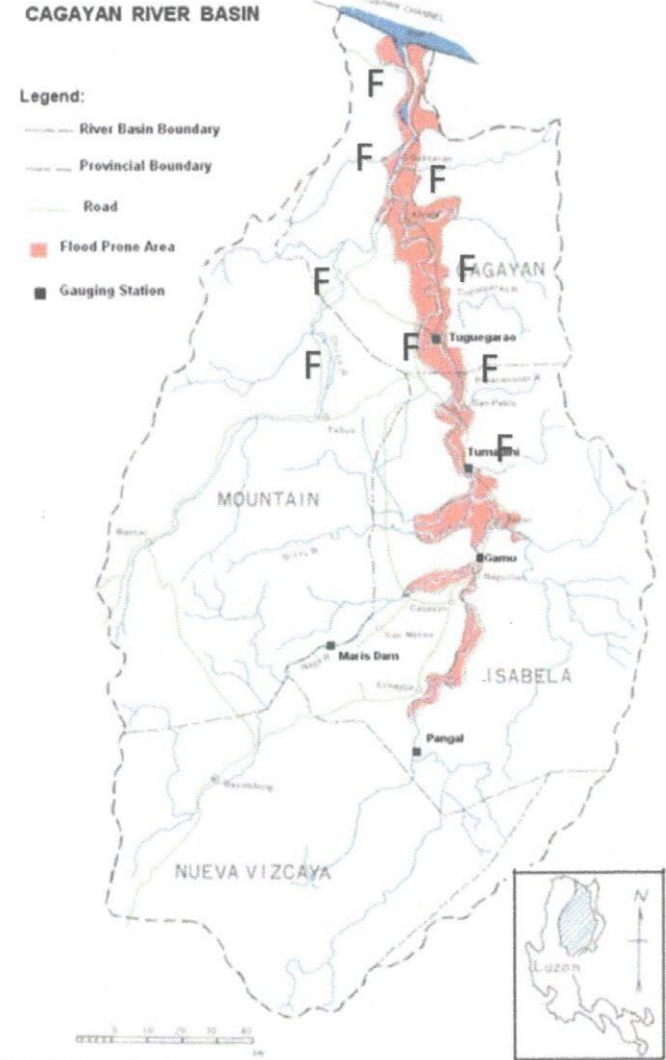


FLOOD BULLETIN NO. 6
CAGAYAN RIVER BASIN
 ISSUED AT 5:00 PM TODAY, 07 NOVEMBER 2017
 (VALID UNTIL THE NEXT ISSUANCE AT 5:00 AM TOMORROW UNLESS THERE IS AN INTERMEDIATE BULLETIN)

AVERAGE BASIN RAINFALL (mm)
 PAST 24 HOURS ENDING AT 4:00 PM TODAY = **6.0 mm**
 FORECAST FOR THE NEXT 12 HOURS = **LIGHT RAINS**

EXPECTED HYDROLOGICAL RESPONSE:			FLOOD SITUATION MESSAGE	LOW-LYING AREAS LIKELY TO BE AFFECTED
MAIN RIVER and ITS TRIBUTARIES	WATER LEVEL STATION / LOCATION	RIVER TREND AT THE STATION		
UPPER CAGAYAN INCLUDING TRIBUTARIES: GANANO and MAGAT	PANGAL STATION ECHAGUE, ISABELA	-	-	-
	MARIS STATION RAMON, ISABELA	-	-	-
MIDDLE CAGAYAN INCLUDING TRIBUTARIES: SIFFU-MALLIG and PINACANAUAN RIVERS OF ILAGAN, TUMAUIINI and SAN PABLO	GAMU STATION GAMU, ISABELA	CONTINUOUS RECESSION	REMMANTS OF FLOODWATERS TO REMAIN IN LOW LYING AREAS FOR FEW DAYS (A FINAL MESSAGE)	GAMU, ILAGAN, SAN MARIANO
	TUMAUIINI STATION TUMAUIINI, ISABELA	CONTINUOUS RECESSION	FLOODING TO REMAIN ON LOW-LYING RIVERSIDE AREAS	TUMAUIINI, DELFIN ALBANO, STO. TOMAS, CABAGAN, STA. MARIA, SAN PABLO
LOWER CAGAYAN INCLUDING TRIBUTARIES: PINACANAUAN DE TUGUEGARAO, CHICO, PARED and DUMMUN	BUNTUN STATION TUGUEGARAO, CAGAYAN	CONTINUOUS RECESSION	FLOODING STILL PERSIST	PEÑABLANCA, TUGUEGARAO CITY, ENRILE, SOLANA, IGUIG, AMULUNG, ALCALA, BAGGAO, LASAM, GATTARAN, LALLO, CAMALANIUGAN, APARRI
	NINYO AQUINO BRIDGE (TUAO, CAGAYAN)	CONTINUOUS RECESSION	FLOODING TO REMAIN ON LOW-LYING RIVERSIDE AREAS	TUAO, PIAT, STO. NIÑO

PEOPLE LIVING NEAR THE LOW LYING AREAS PARTICULARLY THOSE ADJACENT TO AND ALONG THE ABOVE MENTIONED RIVERS ARE ALERTED AGAINST POSSIBLE LANDSLIDES AND FLASHFLOODS AND THE DISASTER RISK REDUCTION AND MANAGEMENT COUNCILS (DRRMC) CONCERNED ARE ADVISED TO TAKE APPROPRIATE ACTIONS.



EXPECTED FLOOD SITUATION
 P – POSSIBLE O – OCCUR
 T – THREATENING F – PERSIST

PREPARED BY:
Den
 LLB / ACP / AEB / JBL / RBG / LML / RFP
 CRFFWC PERSONNEL

NOTED BY:
ROY A. BADILLA
 OIC, HMD