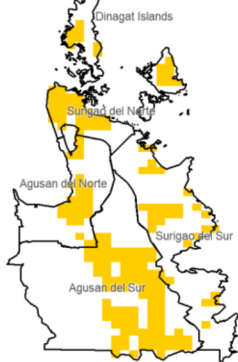


Region XIII (Caraga)

Water Availability for Rice
Prevailing Stage : None

Harvesting and/or pre-planting stage is possibly ongoing.

Water Availability for Corn
Prevailing Stage : (III) Reproductive



Provincial Values

Province	Mon. Ave. Rainfall (mm)	Rice CCI (%)		Corn CCI (%)	
		CS	CCI (%)	CS	CCI (%)
Agusan del Norte	136.5	I	0.3	I	43.6
		II	0.2	II	18.6
		III	0.2	III	1.7
		IV	23.8	IV	17.9
Agusan del Sur	120.4	I	0.3	I	4.3
		II	0.3	II	0.4
		III	0.3	III	0.3
		IV	2.2	IV	0.4
Dinagat Islands	131.4	I	2.5	I	7.8
		II	2.2	II	4.3
		III	2.0	III	2.9
		IV	4.5	IV	4.3
Surigao del Norte	165.6	I	1.0	I	28.0
		II	0.9	II	1.9
		III	0.8	III	1.0
		IV	2.3	IV	1.9
Surigao del Sur	150.2	I	16.4	I	56.0
		II	10.0	II	29.7
		III	7.4	III	17.6
		IV	36.3	IV	29.4

Crop Stage (CS) highlighted in bold is the dominant stage during the month of April.

Rice CS: (I) Nursery, (II) Vegetative, (III) Reproductive, (IV) Ripening
 Corn CS: (I) Establishment, (II) Vegetative, (III) Reproductive, (IV) Maturity
 CCI Category: Inadequate (yellow), Sufficient (green), Excess (blue)

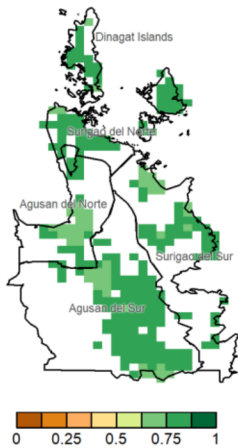
Regional Summary

The Caraga Region experienced inadequate rainfall during the month, which may affect crop development. Corn areas currently at the prevailing reproductive stage may be particularly vulnerable to localized moisture limitations, as insufficient rainfall during this stage can affect grain development and potentially reduce yield. Meanwhile, no prevailing stage for rice was observed, suggesting that harvesting and/or pre-planting activities are ongoing across the region.

The 3-month Standardized Precipitation-Evapotranspiration Index (SPEI3) map indicates slightly drier conditions across much of the region. However, small patches of slightly wetter than normal conditions were observed in Surigao del Norte. Despite this, cumulative moisture deficits from previous months may still be affecting soil moisture availability across most parts of the region.

The extreme rainfall indices (RX1day and RX5day) show that moderate rainfall events were recorded, particularly in Surigao del Norte and Dinagat Islands, with values reaching up to 150 mm. These conditions were likely associated with the prevailing easterlies.

NDVI



SPEI3 (Feb-Mar-Apr)



RX1day



RX5day

