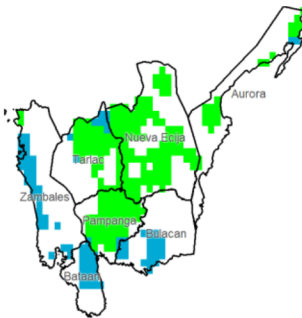


Region III (Central Luzon)

Water Availability for Rice
Prevailing Stage : None

Harvesting and/or pre-planting stage is possibly ongoing.

Water Availability for Corn
Prevailing Stage : (I) Establishment



Provincial Values

	Mon. Ave. Rainfall (mm)	Rice		Corn	
		CS (%)	CCI (%)	CS (%)	CCI (%)
Aurora	159.7	I	77.4	II	149.8
		II	71.2	III	107.8
		III	68.4	IV	84.0
		IV	68.4	IV	106.6
Bataan	290.1	I	161.4	I	295.4
		II	147.8	II	213.9
		III	141.7	III	165.0
		IV	141.7	IV	211.4
Bulacan	226.1	I	114.0	I	229.3
		II	105.7	II	176.1
		III	101.8	III	144.9
		IV	101.8	IV	174.6
Nueva Ecija	132.0	I	50.4	I	116.3
		II	44.9	II	80.7
		III	42.5	III	59.9
		IV	42.5	IV	79.7
Pampanga	190.0	I	85.2	I	163.6
		II	77.0	II	121.8
		III	73.3	III	95.3
		IV	73.3	IV	120.5
Tarlac	209.6	I	76.4	I	164.4
		II	69.0	II	112.2
		III	65.7	III	84.6
		IV	65.7	IV	110.7
Zambales	253.3	I	125.3	I	260.3
		II	114.1	II	194.5
		III	108.9	III	151.0
		IV	108.9	IV	192.3

Crop Stage (CS) highlighted in **bold** is the dominant stage during the month of October.

Rice CS:
(I) Nursery
(II) Vegetative
(III) Reproductive
(IV) Ripening

Corn CS:
(I) Establishment
(II) Vegetative
(III) Reproductive
(IV) Maturity

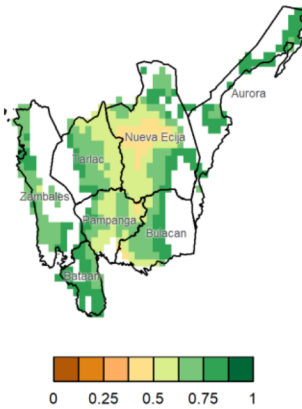
CCI Category:
Inadequate
Sufficient
Excess

Regional Summary

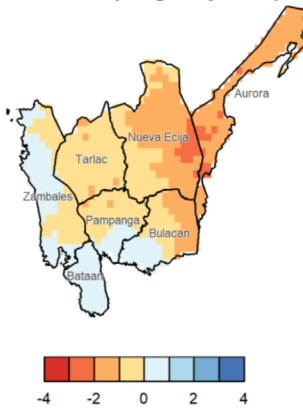
The rainfall received during the month was sufficient for corn crops at any stage in Aurora, Nueva Ecija, Pampanga, and Tarlac. However, the corn crops at the prevailing establishment stage particularly in Bataan, Bulacan and Zambales might have been damaged due to excessive rainfall.

The NDVI illustrated specific areas in Nueva Ecija with lower NDVI values. This could probably indicate areas of rice crops harvested as well as stressed standing corn crops. The SPEI3 further indicated areas of Aurora and Nueva Ecija with slightly drier than normal conditions for the past three months. Notably, extreme rainfall which could have brought adverse impact on both rice and corn crops were experienced in Zambales and Bataan, with maximum 1-day rainfall of about 50-100mm and maximum 5-day rainfall of about 150-250mm. This was mainly attributed to the passage of Typhoon Jenny during the first week of the month.

NDVI



SPEI3 (Aug-Sep-Oct)



RX1day



RX5day

