



ENSO ADVISORY EL NIÑO ADVISORY NO. 8

CLIMPS-09 rev.0/15-08-2023
Issued: 06 February 2024

OVERVIEW

A strong and mature El Niño is expected to continue through February 2024. The majority of global climate models suggest that El Niño will likely persist until the March-April-May 2024 season, with a transition to ENSO-neutral conditions expected in the April-May-June 2024 season.



While stronger El Niño events increase the likelihood of El Niño-related climate anomalies, it does not necessarily equate to strong impacts, and these effects may not occur everywhere. However, the likelihood of below-normal rainfall conditions remains high, which could bring negative impacts such as dry spells and droughts in some areas of the country. These effects are likely to manifest in the first quarter of the year. This situation may adversely affect different climate-sensitive sectors, including water resources, agriculture, energy, health, public safety, and other key sectors of the country.

Assessment in January 2024

WEATHER SYSTEMS THAT AFFECTED THE COUNTRY



NORTHEAST MONSOON (AMIHAN)

Cold and drier winds from the northeast bring rains over the eastern side of the country



LOCALIZED THUNDERSTORM

Warm isolated heavy and dense dark clouds with one or more sudden electric discharges manifested by lightning and thunder often accompanied by showers of rains



SHEAR LINE

Zone of converging winds associated with the extension of a frontal system that often brings thunderstorms and rain showers



EASTERLIES

Warm winds blowing from the east may bring cloudiness over the eastern part of the country



LOW PRESSURE AREA (LPA)

Areas of lowest pressure characterized by cloudiness and rain showers; areas where a tropical cyclone can form

RAINFALL CONDITION



WAY BELOW NORMAL

Greater than 60% reduction from the normal*



BELOW NORMAL

20%-60% reduction from the normal



NEAR NORMAL

+20% or -20% from the normal

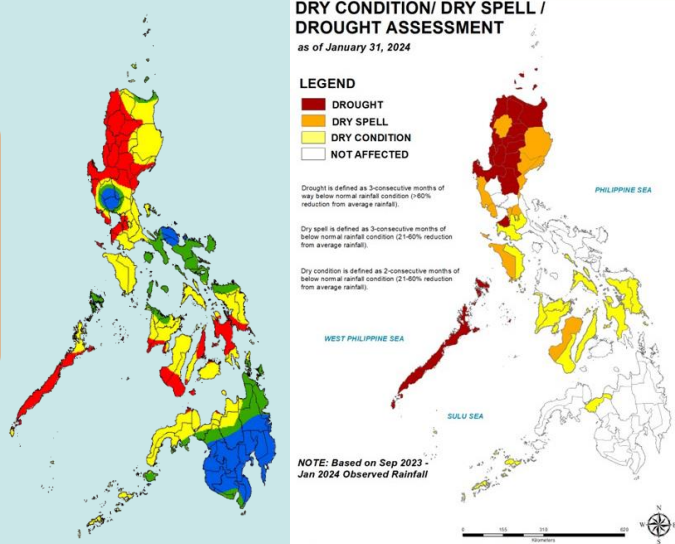


ABOVE NORMAL

120% greater than the normal

most parts of Luzon, Visayas and Northern Mindanao

Pampanga, Tarlac, Bicol Region and the rest of Mindanao



*Based on the **five (5) months** observed rainfall data, **fourteen (14)** provinces from **Luzon** have experienced meteorological **drought**; **ten (10)** provinces experienced **dry spells**; while **seventeen (17)** provinces have experienced **dry conditions**. See Drought Assessment Map (<https://bagong.pagasa.dost.gov.ph/climate/el-nino-la-nina/advisories>)

TEMPERATURE

Mean surface air temperatures observed across the country were near average to warmer than average surface air temperatures.



Mountainous Luzon
9.7°C to 26.4°C



Metro Manila
19.9°C to 33.5°C



Mountainous Mindanao
16.0°C to 34.0°C



Lowlands Luzon
14.8°C to 36.0°C



Visayas
21.2°C to 34.2°C



Lowlands Mindanao
20.8°C to 35.5°C



ENSO ADVISORY EL NIÑO ADVISORY NO. 8

CLIMPS-09 rev.0/15-08-2023
Issued: 06 February 2024

Outlook in February 2024

EXPECTED WEATHER SYSTEMS

NORTHEAST MONSOON (AMIHAN)
Cold and drier winds from the northeast bring rains over the eastern side of the country

LOCALIZED THUNDERSTORM
Warm isolated heavy and dense dark clouds with one or more sudden electric discharges manifested by lightning and thunder often accompanied by showers of rains

SHEAR LINE
Zone of converging winds associated with the extension of a frontal system that often brings thunderstorms and rain showers

LOW PRESSURE AREA (LPA)
Areas of lowest pressure characterized by cloudiness and rain showers; areas where a tropical cyclone can form

EASTERLIES
Warm winds blowing from the east may bring cloudiness over the eastern part of the country

PASSAGE OF 0 OR 1 TROPICAL CYCLONE OR 'BAGYO'
"Bagyo"; may refer to tropical depression, tropical storm, severe tropical storm, typhoon, or super typhoon.

RAINFALL CONDITION

WAY BELOW NORMAL
Greater than 60% reduction from the normal*

most parts of the country

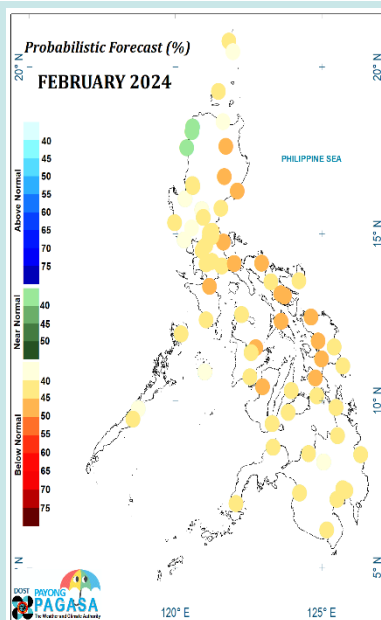
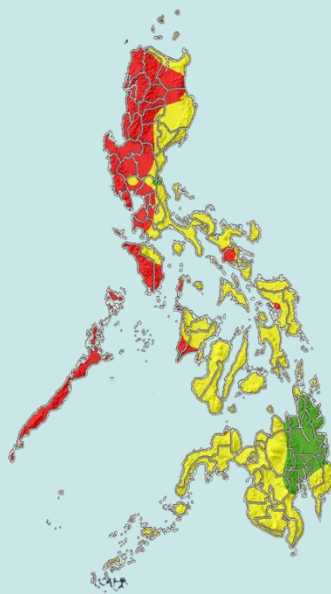
BELOW NORMAL
20%-60% reduction from the normal

NEAR NORMAL
+20% or -20% from the normal

Bukidnon, Davao Region, and Caraga

BELOW NORMAL
20%-60% reduction from the normal

40% - 45% probability in most parts of the country



TEMPERATURE

Generally, near average to warmer than average air temperatures are forecasted over the country, except in Batanes, Camarines Norte, Romblon, Masbate, Bohol, Southern Leyte, and South Cotabato, where slightly cooler to cooler than average is expected to be felt.



Mountainous Luzon
9.5°C to 27.0°C



Metro Manila
18.5°C to 35.0°C



Mountainous Mindanao
12.0°C to 35.0°C



Lowlands Luzon
13.0°C to 36.5°C



Visayas
19.0°C to 36.0°C



Lowlands Mindanao
18.0°C to 37.0°C