



## ENSO ADVISORY EL NIÑO ADVISORY NO. 9 / LA NIÑA WATCH

CLIMPS-09 rev.0/15-08-2023  
Issued: 07 March 2024

### OVERVIEW

El Niño across the tropical Pacific Ocean shows signs of weakening and is expected to persist until March-April-May (MAM) 2024 season. Majority of climate models suggest a transition to ENSO-neutral conditions during the April-May-June (AMJ) 2024 season (79% chance). However, there is a likelihood for La Niña to develop (55% chance) during the June-July-August (JJA) 2024 season. With this development, the PAGASA ENSO Alert and Warning System is now raised to La Niña Watch.



While stronger El Niño events increase the likelihood of El Niño-related climate anomalies, it does not necessarily equate to strong impacts, and these effects may not occur everywhere. However, the likelihood of below-normal rainfall conditions remains high, which could bring negative impacts such as dry spells and droughts in some areas of the country. These effects are likely to manifest in the first quarter of the year. This situation may adversely affect different climate-sensitive sectors, including water resources, agriculture, energy, health, public safety, and other key sectors of the country.

### Assessment in February 2024

## WEATHER SYSTEMS THAT AFFECTED THE COUNTRY

**NE** **NORTHEAST MONSOON (AMIHAN)**  
Cold and drier winds from the northeast bring rains over the eastern side of the country

**E** **EASTERLIES**  
Warm winds blowing from the east may bring cloudiness over the eastern part of the country



**LOCALIZED THUNDERSTORM**  
Warm isolated heavy and dense dark clouds with one or more sudden electric discharges manifested by lightning and thunder often accompanied by showers of rains.

**RIDGE OF HIGH PRESSURE AREA (HPA)**  
An extension of a high pressure area characterized by a very light wind and clear skies

**L** **LOW PRESSURE AREA (LPA)**  
Areas of lowest pressure characterized by cloudiness and rainshowers; areas where a tropical cyclone can form

**SHEAR LINE**  
Zone of converging winds associated with the extension of a frontal system that often brings thunderstorms and rainshowers

## RAINFALL CONDITION

**WAY BELOW NORMAL**  
Greater than 60% reduction from the normal\*

**BELOW NORMAL**  
20%-60% reduction from the normal

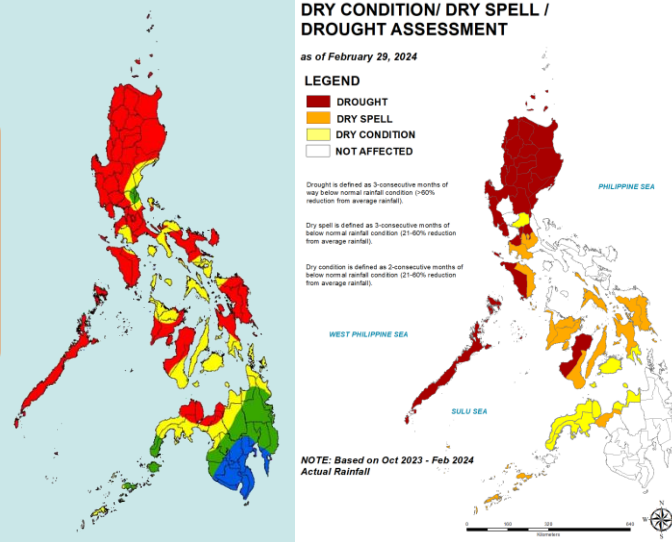
**NEAR NORMAL**  
+20% or -20% from the normal

**ABOVE NORMAL**  
120% greater than the normal

most parts of the country

some areas in Mindanao

\*Based on observed rainfall data, **twenty-four (24)** provinces from **Luzon** and **one (1)** province in the **Visayas** experienced **meteorological drought**; **sixteen (16)** provinces were under **dry spells**, and **ten (10)** provinces were under **dry conditions**. See Drought Assessment Map (<https://bagong.pagasa.dost.gov.ph/climate/el-nino-la-nina/advisories>)



## TEMPERATURE

Surface air temperatures were generally near average to warmer than average across the country.

Mountainous Luzon  
11.3°C – 27.4°C

Lowlands Luzon  
14.1°C – 36.8°C

Metro Manila  
20.9°C – 34.3°C

Visayas  
21.5°C – 35.0°C

Mountainous Mindanao  
15.4°C – 33.0°C

Lowlands Mindanao  
18.7°C – 37.1°C



## ENSO ADVISORY EL NIÑO ADVISORY NO. 9 / LA NIÑA WATCH

CLIMPS-09 rev.0/15-08-2023  
Issued: 07 March 2024

### Outlook in March 2024

## EXPECTED WEATHER SYSTEMS

**NE** **NORTHEAST MONSOON (AMIHAN)**  
Cold and drier winds from the northeast bring rains over the eastern side of the country

**Weakening**

**LOCALIZED THUNDERSTORM**  
Warm isolated heavy and dense dark clouds with one or more sudden electric discharges manifested by lightning and thunder often accompanied by showers of rains.

**E** **EASTERLIES**  
Warm winds blowing from the east may bring cloudiness over the eastern part of the country

**RIDGE OF HIGH PRESSURE AREA (HPA)**  
An extension of a high pressure area characterized by a very light wind and clear skies

**L** **LOW PRESSURE AREA (LPA)**  
Areas of lowest pressure characterized by cloudiness and rainshowers; areas where a tropical cyclone can form

**PASSAGE OF 0 OR 1 TROPICAL CYCLONE OR 'BAGYO'**  
"Bagyo"; may refer to tropical depression, tropical storm, severe tropical storm, typhoon, or super typhoon.

## RAINFALL CONDITION

**WAY BELOW NORMAL**  
Greater than 60% reduction from the normal\*

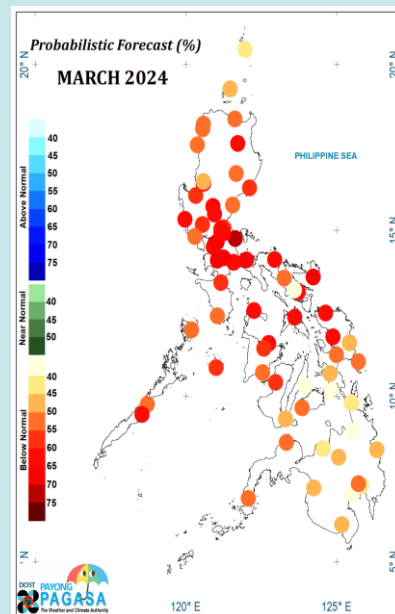
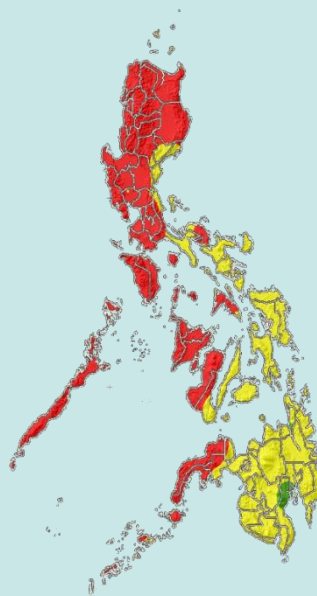
**BELOW NORMAL**  
20%-60% reduction from the normal

most parts of the country

**WAY BELOW NORMAL**  
Greater than 60% reduction from the normal\*

**BELOW NORMAL**  
20%-60% reduction from the normal

High probability in most parts of the country



## TEMPERATURE

Generally below-average to warmer-than-average surface air temperatures are expected throughout the country this month

Mountainous Luzon  
12.0°C to 28.0°C

Metro Manila  
20.0°C to 36.0°C

Mountainous Mindanao  
14.0°C to 35.0°C

Lowlands Luzon  
17.0°C to 37.0°C

Visayas  
20.0°C to 36.5°C

Lowlands Mindanao  
18.0°C to 37.5°C