



OVERVIEW

El Niño in the tropical Pacific Ocean continues to weaken but impacts such as hotter and drier conditions still persist. A transition to ENSO-neutral conditions is anticipated during the April-May-June (AMJ) to May-June-July (MJJ) 2024 season. However, a likelihood for La Niña to develop during the June-July-August (JJA) 2024 season has a 60% chance. With these conditions, the PAGASA ENSO Alert and Warning System still remains at El Niño Advisory / La Niña Watch.



While stronger El Niño events increase the likelihood of El Niño-related climate anomalies, it does not necessarily equate to strong impacts, and these effects may not occur everywhere. However, the likelihood of below-normal rainfall conditions remains high, which could bring negative impacts such as dry spells and droughts in some areas of the country. This situation may adversely affect different climate-sensitive sectors, including water resources, agriculture, energy, health, public safety, and other key sectors of the country.

Assessment in April 2024

WEATHER SYSTEMS THAT AFFECTED THE COUNTRY



EASTERLIES

Warm winds blowing from the east may bring cloudiness over the eastern part of the country



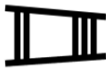
LOCALIZED THUNDERSTORM

Warm isolated heavy and dense dark clouds with one or more sudden electric discharges manifested by lightning and thunder often accompanied by showers of rains.



RIDGE OF HIGH PRESSURE AREA (HPA)

An extension of a high pressure area characterized by a very light wind and clear skies



INTERTROPICAL CONVERGENCE ZONE (ITCZ)

Series of low pressure areas brought about by converging Northeast (NE) and Southeast (SE) winds that cause thunderstorms and rainshowers



LOW PRESSURE AREA (LPA)

Areas of lowest pressure characterized by cloudiness and rainshowers; areas where a tropical cyclone can form

RAINFALL CONDITION



WAY BELOW NORMAL

Greater than 60% reduction from the normal*



BELOW NORMAL

20%-60% reduction from the normal



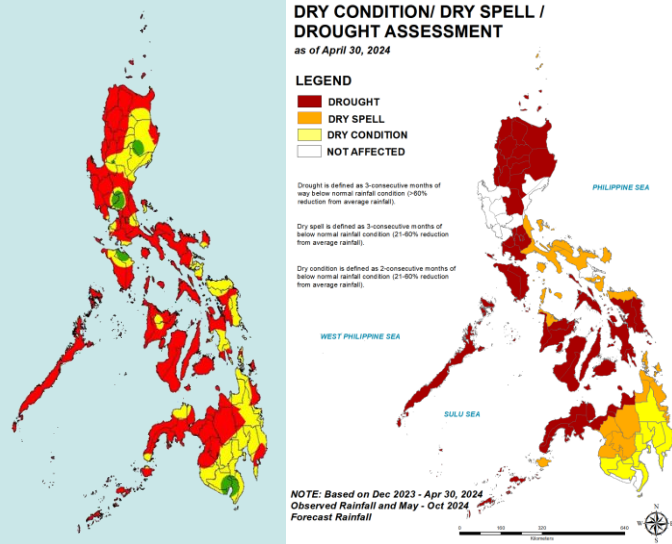
NEAR NORMAL

+20% or -20% from the normal

most parts of the country

Bulacan and Sarangani

*Assessment of rainfall data in April showed that **twenty-three (23)** provinces in Luzon, **fourteen (14)** provinces in the Visayas, and **nine (9)** provinces in Mindanao experienced **meteorological drought**; **nineteen (19)** provinces were under **dry spells**, and **nine (9)** provinces experienced **dry conditions**. See Drought Assessment Map (<https://bagong.pagasa.dost.gov.ph/climate/el-nino-la-nina/advisories>)



TEMPERATURE

Mean surface air temperatures were generally slightly above to way above average over most parts of the country



Mountainous Luzon
11.4°C – 28.6°C



Metro Manila
22.6°C – 38.8°C



Mountainous Mindanao
14.5°C – 37.5°C



Lowlands Luzon
20.2°C – 40.3°C



Visayas
22.5°C – 37.6°C



Lowlands Mindanao
22.5°C – 37.4°C



Outlook in May 2024

EXPECTED WEATHER SYSTEMS



EASTERLIES

Warm winds blowing from the east may bring cloudiness over the eastern part of the country



RIDGE OF HIGH PRESSURE AREA (HPA)

An extension of a high pressure area characterized by a very light wind and clear skies



LOCALIZED THUNDERSTORM

Warm isolated heavy and dense dark clouds with one or more sudden electric discharges manifested by lightning and thunder often accompanied by showers of rains.



INTERTROPICAL CONVERGENCE ZONE (ITCZ)

Series of low pressure areas brought about by converging Northeast (NE) and Southeast (SE) winds that cause thunderstorms and rainshowers



LOW PRESSURE AREA (LPA)

Areas of lowest pressure characterized by cloudiness and rainshowers; areas where a tropical cyclone can form



PASSAGE OF 1 OR 2 TROPICAL CYCLONES OR 'BAGYO'

"Bagyo"; may refer to tropical depression, tropical storm, severe tropical storm, typhoon, or super typhoon.



SOUTHWEST MONSOON (HABAGAT)

Warm moist winds from the southwest caused rains over the western portion of the country from May to September

Transition

RAINFALL CONDITION



BELOW NORMAL

20%-60% reduction from the normal

most parts of Luzon and Visayas



NEAR NORMAL

+20% or -20% from the normal

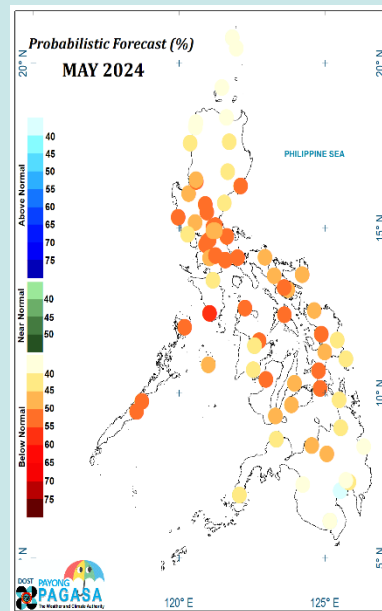
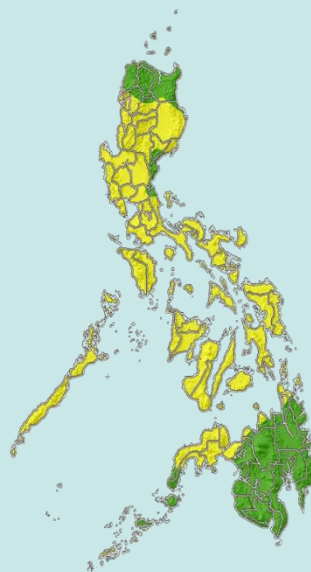
mostly in Mindanao and the northern portions of Luzon



BELOW NORMAL

20%-60% reduction from the normal

High probability in most parts of the country



TEMPERATURE

Generally, slightly below-average to warmer-than-average surface air temperatures are expected throughout the country this month



Mountainous Luzon
15.2°C to 29.0°C



Metro Manila
23.0°C to 38.3°C



Mountainous Mindanao
16.1°C to 36.3°C



Lowlands Luzon
19.0°C to 40.8°C



Visayas
21.4°C to 37.5°C



Lowlands Mindanao
21.4°C to 38.3°C