

PAYONG PAGASA

LA NIÑA ADVISORY NO. 12

OVERVIEW

La Niña re-strengthened during the past month as further cooling in the central equatorial Pacific continue and is forecasted until the December-January- February (DJF) 2022-2023 season (~60%), with ENSO neutral conditions thereafter.

Issued: 06 September 2022



La Niña increases the likelihood of having above normal rainfall conditions across most areas of the country. Adverse impacts such as flooding and landslides are still expected over vulnerable areas and sectors of the country.

Assessment in August 2022

WEATHER SYSTEMS THAT AFFECTED THE COUNTRY

SW SOUTHWEST MONSOON (HABAGAT)
Warm moist winds from the southwest causing rains over the western portion of the country from May to September

RIDGE OF HIGH PRESSURE AREA (HPA)
An extension of a high pressure area characterized by very light wind and clear skies

L LOW PRESSURE AREA (LPA)
Areas of lowest pressure characterized by cloudiness and rainshowers; areas where a tropical cyclone can form

III INTERTROPICAL CONVERGENCE ZONE (ITCZ)
Series of low pressure areas brought about by converging northeast (NE) and southeast (SE) winds that cause thunderstorms and rainshowers

E EASTERLIES
Warm winds blowing from the east that may bring cloudiness over the eastern part of the country

☁ LOCALIZED THUNDERSTORM
Isolated heavy and dense dark clouds with one or more sudden electric discharges manifested by lightning and thunder often accompanied by showers of rain.

6 3 TROPICAL CYCLONE

- Typhoon “Florita” (Aug. 21-24)
- Tropical Depression (TD) “Gardo” (Aug 30 – Sep 1)
- Super Typhoon (STY) “Henry” (Aug 31 – Sep 4)

RAINFALL CONDITION

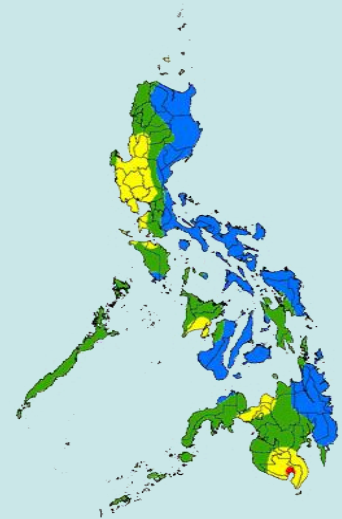
NEAR NORMAL
+20% or -20% from the normal

ABOVE NORMAL
120% greater than the normal

BELOW NORMAL
20%-60% reduction from the normal

Rest of the Country

Batanes, Benguet, most parts of Central Luzon, La Union, Pangasinan, Guimaras, Lanao del Norte and southeastern Mindanao



TEMPERATURE

Most of the country experienced near-average to cooler-than-average surface air temperatures except for some areas in Central Luzon, Metro Manila and Northern Mindanao that experienced slightly warmer to warmer-than-average mean temperatures

Mountainous Luzon
15.2°C – 26.4°C

Lowlands Luzon
24.4°C – 35.5°C

Metro Manila
23.8°C – 35.4°C

Visayas
23.6°C – 35.1°C

Mountainous Mindanao
17.4°C – 33.0°C

Lowlands Mindanao
23.1°C – 35.6°C

PAYONG PAGASA

LA NIÑA ADVISORY NO. 12

Issued: 06 September 2022

Outlook in September 2022

EXPECTED WEATHER SYSTEMS



SOUTHWEST MONSOON (HABAGAT)

Warm moist winds from the southwest causing rains over the western portion of the country from May to September



EASTERLIES

Warm winds blowing from the east that may bring cloudiness over the eastern part of the country



INTERTROPICAL CONVERGENCE ZONE (ITCZ)

Series of low pressure areas brought about by converging northeast (NE) and southeast (SE) winds that cause thunderstorms and rainshowers



LOW PRESSURE AREA (LPA)

Areas of lowest pressure characterized by cloudiness and rainshowers; areas where a tropical cyclone can form



RIDGE OF HIGH PRESSURE AREA (HPA)

An extension of a high pressure area characterized by very light wind and clear skies



LOCALIZED THUNDERSTORM

Isolated heavy and dense dark clouds with one or more sudden electric discharges manifested by lightning and thunder often accompanied by showers of rain.



2 or 3 TROPICAL CYCLONES

"Bagyo"; may refer to tropical depression, tropical storm, severe tropical storm, typhoon, or super typhoon.

RAINFALL CONDITION



NEAR NORMAL

+20% or -20% from the normal

Most areas of the country



BELOW NORMAL

20%-60% reduction from the normal

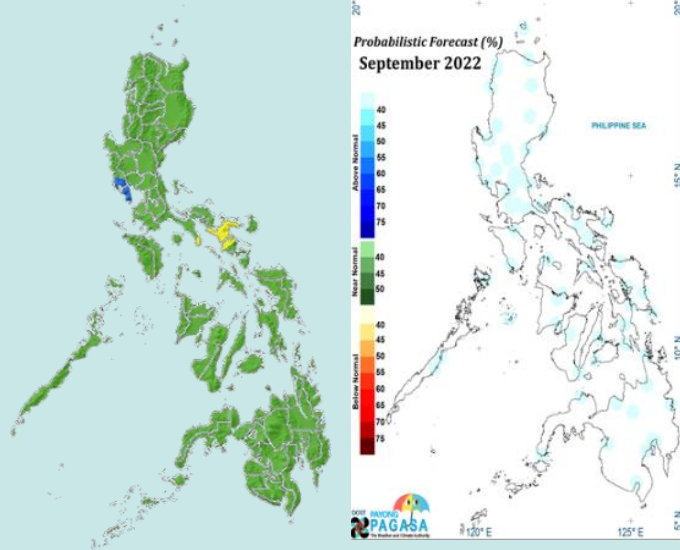
Camarines Sur



ABOVE NORMAL

120% greater than the normal

High probability of having above normal rainfall conditions on most areas of the country



TEMPERATURE

Generally, near average to warmer than average surface air temperatures are predicted in most parts of the country while near to slightly warmer than average is expected for areas in Southern Luzon and Visayas.



Mountainous Luzon
14.0°C to 26.5°C



Metro Manila
22.5°C to 36.0°C



Mountainous Mindanao
15.0°C to 33.0°C



Lowlands Luzon
18.0°C to 37.0°C



Visayas
21.0°C to 36.0°C



Lowlands Mindanao
21.0°C to 37.0°C