



PAYONG PAGASA

ENSO ADVISORY EL NIÑO ADVISORY NO. 4

CLIMPS-09 rev.0/15-08-2023
Issued: 05 October 2023

OVERVIEW

The tropical Pacific still shows warmer-than-normal sea surface temperatures signifying a moderate El Niño. Meanwhile, a strong El Niño is predicted by the majority of climate models to occur later this year with the event likely to continue until the second quarter of 2024.



El Niño increases the likelihood of below-normal rainfall conditions, which could bring negative impacts (such as dry spells and droughts) in some areas of the country that will likely be manifested during the last quarter up to the first quarter of the year. This may adversely affect the different climate-sensitive sectors such as the water resources, agriculture, energy, health, public safety and other key sectors in the country.

Assessment in September 2023

WEATHER SYSTEMS THAT AFFECTED THE COUNTRY

SW SOUTHWEST MONSOON (HABAGAT)



Warm moist winds from the southwest causing rains over the western portion of the country from May to September

LOCALIZED THUNDERSTORM



Warm isolated heavy and dense dark clouds with one or more sudden electric discharges manifested by lightning and thunder often accompanied by showers of rains

LOW PRESSURE AREA (LPA)



Areas of lowest pressure characterized by cloudiness and rain showers; areas where a tropical cyclone can form

INTERTROPICAL CONVERGENCE ZONE (ITCZ)



Series of low pressure areas brought about by converging northeast (NE) and southeast (SE) winds that causes thunderstorms and rainshowers

PASSAGE OF 2 TROPICAL CYCLONES OR 'BAGYO'



TROPICAL DEPRESSION "INENG" (September 05–06)
TROPICAL STORM "JENNY" (September 29)

RAINFALL CONDITION



NEAR NORMAL

+20% or -20% from the normal



ABOVE NORMAL

120% greater than the normal

most parts of the country

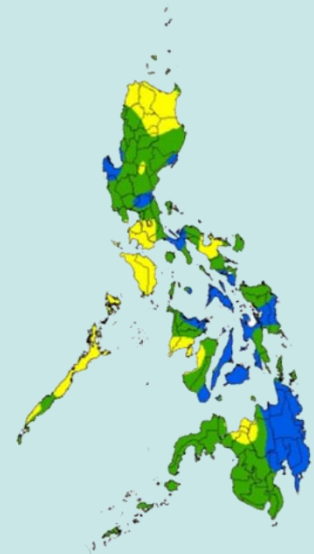


BELOW NORMAL

20%-60% reduction from the normal

Kalinga, Apayao, Ilocos Norte, Batanes, Cagayan, Batangas, Cavite, Laguna, Oriental Mindoro, Occidental Mindoro, Palawan, Camarines Sur, Guimaras, and Lanao del Norte provinces.

*six (6) provinces have experienced meteorological dry conditions (two consecutive months of below-normal rainfall conditions): **Batanes, Batangas, Cavite, Mindoro Provinces, and Camarines Sur**. Whereas, the province of **Lanao Del Norte** has experienced dry spell conditions (three consecutive months of below-normal rainfall conditions). See Drought Assessment Map (<https://bagong.pagasa.dost.gov.ph/climate/el-nino-la-nina/advisories>)



TEMPERATURE

Generally, the mean surface air temperatures observed across the country were near-average to above-average, except for the southern portion of Eastern Samar which experienced slightly below-average air temperature.



Mountainous Luzon
16.4°C to 25.4°C



Lowlands Luzon
22.0°C to 37.9°C



Metro Manila
22.3°C to 35.3°C



Visayas
22.0°C to 36.0°C



Mountainous Mindanao
18.5°C to 32.8°C



Lowlands Mindanao
22.1°C to 36.0°C



Outlook in October 2023

EXPECTED WEATHER SYSTEMS

SW SOUTHWEST MONSOON (HABAGAT)
Warm moist winds from the southwest causing rains over the western portion of the country from May to September



NE NORTHEAST MONSOON (AMIHAN)
Cold and drier winds from the northeast bring rains over the eastern side of the country



LOCALIZED THUNDERSTORM
Warm isolated heavy and dense dark clouds with one or more sudden electric discharges manifested by lightning and thunder often accompanied by showers of rains

L LOW PRESSURE AREA (LPA)
Areas of lowest pressure characterized by cloudiness and rain showers; areas where a tropical cyclone can form



INTERTROPICAL CONVERGENCE ZONE (ITCZ)
Series of low pressure areas brought about by converging northeast (NE) and southeast (SE) winds that causes thunderstorms and rainshowers



PASSAGE OF 2 OR 3 TROPICAL CYCLONES OR 'BAGYO'
Bagyo may refer to a tropical depression, severe tropical storm, typhoon, or super typhoon

RAINFALL CONDITION

BELOW NORMAL
20%-60% reduction from the normal

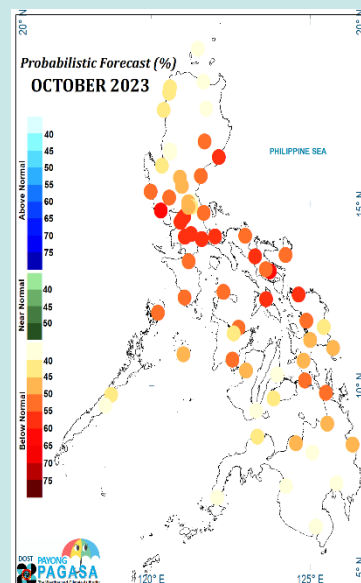
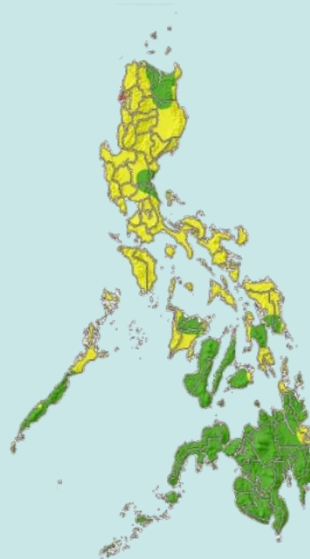
most parts of Luzon and Eastern and Western Visayas

NEAR NORMAL
+20% or -20% from the normal

some parts of Batanes, Cagayan, Palawan, Capiz, Negros Occidental, Leyte, Central Visayas and most parts of Mindanao except in Surigao del Sur and Dinagat Islands

BELOW NORMAL
20%-60% reduction from the normal

High probabilities all over the country, especially in the eastern, central, and southern parts of Luzon and in Eastern Visayas



TEMPERATURE

Generally, near-average to above-average surface air temperatures are predicted in most parts of the country except for cooler-than-average air temperatures in some parts of MIMAROPA (Region IV-B), Bicol Region, and Central Visayas.



Mountainous Luzon
12.5°C to 26.5°C



Metro Manila
21.5°C to 35.0°C



Mountainous Mindanao
17.0°C to 34.0°C



Lowlands Luzon
17.0°C to 36.0°C



Visayas
20.5°C to 36.0°C



Lowlands Mindanao
20.0°C to 37.0°C