



OVERVIEW

A strong El Niño is present in the tropical Pacific and further intensified, nearing its peak in the coming months, as sea surface temperature anomalies (SSTAs) have reached more than 1.5°C. Majority of global climate models suggest that El Niño will likely persist until the second quarter of 2024.



El Niño increases the likelihood of below-normal rainfall conditions, which could bring negative impacts (such as dry spells and droughts) in some areas of the country which will likely be manifested during the last quarter of the year and unto the first quarter of next year. This may adversely affect the different climate-sensitive sectors such as the water resources, agriculture, energy, health, public safety and other key sectors of the country.

Assessment in November 2023

WEATHER SYSTEMS THAT AFFECTED THE COUNTRY

NE
NORTHEAST MONSOON (AMIHAN)
Cold and drier winds from the northeast bring rains over the eastern side of the country

LOCALIZED THUNDERSTORM
Warm isolated heavy and dense dark clouds with one or more sudden electric discharges manifested by lightning and thunder often accompanied by showers of rains

SHEAR LINE
Zone of converging winds associated with the extension of a frontal system that often brings thunderstorms and rain showers

E
EASTERLIES
Warm winds blowing from the east may bring cloudiness over the eastern part of the country

L
LOW PRESSURE AREA (LPA)
Areas of lowest pressure characterized by cloudiness and rain showers; areas where a tropical cyclone can form

RAINFALL CONDITION

WAY BELOW NORMAL
Greater than 60% reduction from the normal*

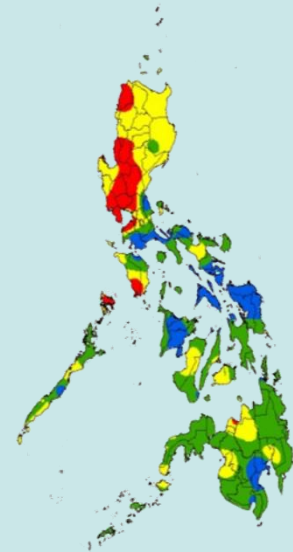
BELOW NORMAL
20%-60% reduction from the normal

NEAR NORMAL
+20% or -20% from the normal

ABOVE NORMAL
120% greater than the normal

most parts of Northern and Central Luzon, Metro Manila, Cavite, Rizal, Occidental Mindoro, Palawan and few provinces in Visayas and Mindanao

general areas of Visayas and Mindanao.



*six (6) provinces have experienced meteorological dry spell (three consecutive months of below normal rainfall conditions): **Kalinga, Apayao, Cagayan, Nueva Ecija, Cavite and Palawan**, while **seventeen (17) provinces** have experienced dry conditions: **mostly in Luzon area, Negros Occidental, Basilan, and Maguindanao**. See Drought Assessment Map (<https://bagong.pagasa.dost.gov.ph/climate/el-nino-la-nina/advisories>)

TEMPERATURE

Generally, mean surface air temperatures observed across the country were near average to warmer than average.

Mountainous Luzon
13.4°C to 26.6°C

Lowlands Luzon
16.3°C to 36.4°C

Metro Manila
21.7°C to 35.0°C

Visayas
22.0°C to 35.2°C

Mountainous Mindanao
16.5°C to 35.0°C

Lowlands Mindanao
21.0°C to 37.4°C



Outlook in December 2023

EXPECTED WEATHER SYSTEMS

NORTHEAST MONSOON (AMIHAN)
Cold and drier winds from the northeast bring rains over the eastern side of the country

LOCALIZED THUNDERSTORM
Warm isolated heavy and dense dark clouds with one or more sudden electric discharges manifested by lightning and thunder often accompanied by showers of rains

SHEAR LINE
Zone of converging winds associated with the extension of a frontal system that often brings thunderstorms and rain showers

FRONTAL SYSTEM
Zone of converging winds that stays in one area for a while which often brings thunderstorms and rain showers

INTERTROPICAL CONVERGENCE ZONE (ITCZ)
Series of low pressure areas brought about by converging northeast (NE) and southeast (SE) winds that causes thunderstorms and rain showers

EASTERLIES
Warm winds blowing from the east may bring cloudiness over the eastern part of the country

LOW PRESSURE AREA (LPA)
Areas of lowest pressure characterized by cloudiness and rain showers; areas where a tropical cyclone can form

PASSAGE OF 1 OR 2 TROPICAL CYCLONES OR 'BAGYO'
"Bagyo"; may refer to tropical depression, tropical storm, severe tropical storm, typhoon, or super typhoon.

RAINFALL CONDITION

BELOW NORMAL
20%-60% reduction from the normal

most parts of Northern and Central Luzon, Metro Manila, Batangas, Cavite, Mindoro provinces and Palawan

NEAR NORMAL
+20% or -20% from the normal

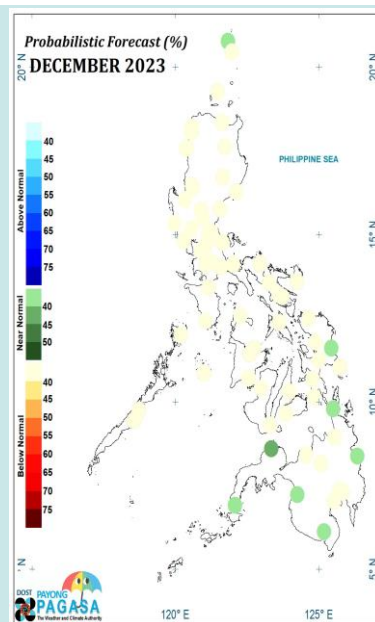
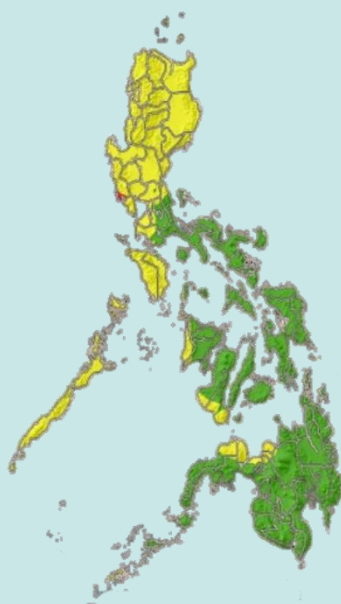
rest of the country

BELOW NORMAL
20%-60% reduction from the normal

40% probability in most parts of the country

NEAR NORMAL
+20% or -20% from the normal

high probability in Eastern Visayas and Mindanao



TEMPERATURE

Generally, near average to warmer than average air temperatures are forecasted over the country, except in Romblon and General Santos, where slightly cooler than average is expected. Surges of cold temperatures may also be expected to occur during the month.

Mountainous Luzon
11.5°C to 27.0°C

Metro Manila
20.0°C to 34.5°C

Mountainous Mindanao
15.0°C to 33.5°C

Lowlands Luzon
14.0°C to 37.5°C

Visayas
21.0°C to 35.0°C

Lowlands Mindanao
20.0°C to 39.5°C