



ENSO ADVISORY La Niña Advisory No. 3

Issued: 06 February 2026

OVERVIEW

A weak La Niña is present in the tropical Pacific and has shown a further weakening trend observed in recent weeks. Based on the latest forecast, La Niña is likely to persist through the first quarter of 2026. Accordingly, the DOST-PAGASA ENSO Alert and Warning system remains at La Niña Advisory, with climate models indicating a 75% probability of transitioning to ENSO-neutral conditions during the January–March 2026 season.



Although La Niña is weakening, its influence may still affect weather conditions in the Philippines. La Niña increases the likelihood of above normal rainfall conditions and increased occurrence of tropical cyclone development in the Philippine Area of Responsibility (PAR). During this season, rain-bearing weather systems may bring occasional heavy rainfall that could lead to flash floods and rain-induced landslides in vulnerable areas, particularly over the eastern sections of the country.

Assessment in January 2026

WEATHER SYSTEMS THAT AFFECTED THE COUNTRY



NE NORTHEAST MONSOON (AMIHAN)
Cold and drier winds from the northeast bring rains over the eastern side of the country



LOCALIZED THUNDERSTORM
Warm isolated heavy and dense dark clouds with one or more sudden electric discharges manifested by lightning and thunder often accompanied by showers of rains.



INTERTROPICAL CONVERGENCE ZONE (ITCZ)
Series of low pressure areas brought about by converging Northeast (NE) and Southeast (SE) winds that cause thunderstorms and rainshowers



EASTERLIES
Warm winds blowing from the east may bring cloudiness over the eastern part of the country



LOW PRESSURE AREA (LPA)
Areas of lowest pressure characterized by cloudiness and rainshowers; areas where a tropical cyclone can form



SHEAR LINE
Zone of converging winds associated with the extension of a frontal system that often brings thunderstorms and rainshowers



TROPICAL CYCLONE
TD Ada from January 14 - 21

RAINFALL CONDITION

WAY BELOW NORMAL
Greater than 60% reduction from the normal*

BELOW NORMAL
20%-60% reduction from the normal

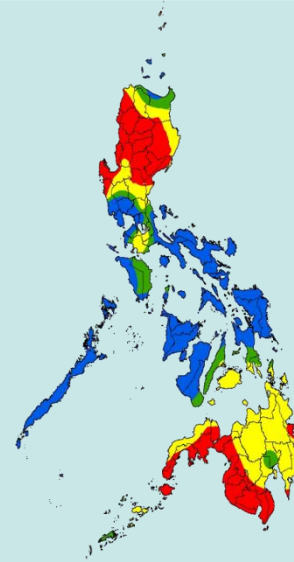
ABOVE NORMAL
120% to 160% than normal

NEAR NORMAL
+20% or -20% from the normal

over most parts of northern Luzon, some areas of Central Luzon, and Mindanao

Extreme Northern Luzon and some areas of Central and Southern Luzon

Most parts of Visayas except in Bohol and Siquijor



TEMPERATURE

Mean surface air temperatures were generally near average to cooler than average in most parts of Luzon and in some areas of Samar Island. In contrast, most parts of Mindanao and the Visayas experienced slightly warmer to warmer than average temperatures, while near-average temperatures prevailed elsewhere.



Mountainous Luzon
10.6°C – 24.2°C



Metro Manila
19.2°C – 32.4°C



Mountainous Mindanao
17.0°C – 33.5°C



Lowlands Luzon
16.3°C – 34.8°C



Visayas
19.2°C – 33.6°C



Lowlands Mindanao
21.0°C – 35.4°C



ENSO ADVISORY La Niña Advisory No. 3

Issued: 06 February 2026

Outlook in February 2026

EXPECTED WEATHER SYSTEMS

NE **NORTHEAST MONSOON (AMIHAN)**
Cold and drier winds from the northeast bring rains over the eastern side of the country

E **EASTERLIES**
Warm winds blowing from the east may bring cloudiness over the eastern part of the country

L **LOW PRESSURE AREA (LPA)**
Areas of lowest pressure characterized by cloudiness and rainshowers; areas where a tropical cyclone can form

INTERTROPICAL CONVERGENCE ZONE (ITCZ)
Series of low pressure areas brought about by converging Northeast (NE) and Southeast (SE) winds that cause thunderstorms and rainshowers

LOCALIZED THUNDERSTORM
Warm isolated heavy and dense dark clouds with one or more sudden electric discharges manifested by lightning and thunder often accompanied by showers of rains.

SHEAR LINE
Zone of converging winds associated with the extension of a frontal system that often brings thunderstorms and rainshowers

RIDGE OF HIGH PRESSURE AREA (HPA)
An extension of a high pressure area characterized by a very light wind and clear skies

PASSAGE OF 0 OR 1 TROPICAL CYCLONE OR BAGYO
"Bagyo"; may refer to tropical depression, tropical storm, severe tropical storm, typhoon, or super typhoon.

RAINFALL CONDITION

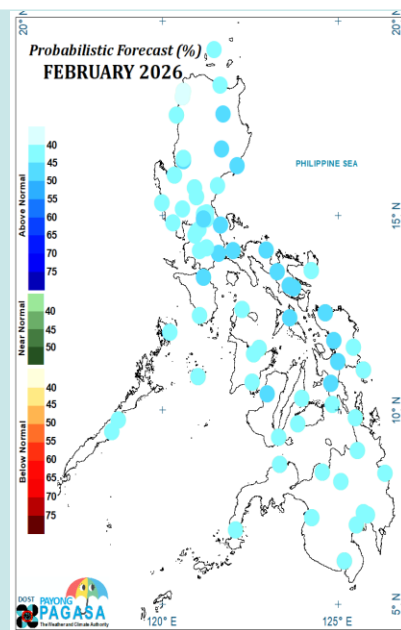
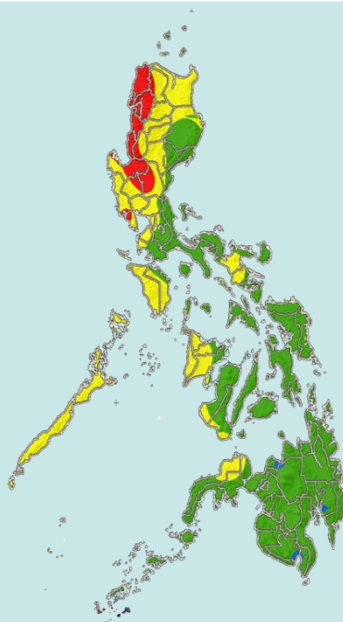
WAY BELOW NORMAL
Greater than 60% reduction from the normal*

BELOW NORMAL
20%-60% reduction from the normal

NEAR NORMAL
+20% or -20% from the normal

over the western parts of northern and central Luzon, with localized areas of below-normal rainfall in MIMAROPA, Bicol Region, Western Visayas, and Western Mindanao

Some areas in Eastern and Southern Luzon and most parts of the Visayas & Mindanao



TEMPERATURE

The temperature forecast shows near-normal to above-normal mean temperatures across most parts of the country, although slightly cooler to cooler-than-average temperatures may be observed in some areas of northern Luzon. Surges of cold temperatures may also occur in certain parts of Luzon during the period.

Mountainous Luzon
10.0°C to 27.6°C

Metro Manila
18.4°C to 35.1°C

Mountainous Mindanao
13.1°C to 33.8°C

Lowlands Luzon
14.1°C to 36.4°C

Visayas
18.9°C to 35.1°C

Lowlands Mindanao
18.3°C to 37.0°C