



# PAYONG PAGASA

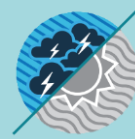
## LA NIÑA ADVISORY NO. 8



Issued: 05 May 2022

### OVERVIEW

La Niña has slightly strengthened and is likely to continue until the June-August 2022 season (59% chance), with a 50-55% of La Niña to continue thereafter.



La Niña increases the likelihood of having above normal rainfall conditions across most areas of the country. Adverse impacts such as flooding and landslides are still expected over vulnerable areas and sectors of the country.

### Assessment in April 2022

## WEATHER SYSTEMS THAT AFFECTED THE COUNTRY

**NE NORTHEAST MONSOON (AMIHAN)**  
Cold winds from the northeast that bring rains over the eastern side of the country.

**E EASTERLIES**  
Warm winds blowing from the east that may bring cloudiness over the eastern part of the country

**L LOW PRESSURE AREA (LPA)**  
Areas of lowest pressure characterized by cloudiness and rainshowers; areas where a tropical cyclone can form

**INTERTROPICAL CONVERGENCE ZONE (ITCZ)**  
Series of low pressure areas brought about by converging northeast (NE) and southeast (SE) winds that cause thunderstorms and rainshowers

**(((H RIDGE OF HIGH PRESSURE AREA (HPA)**  
An extension of a high pressure area characterized by very light wind and clear skies

**Shear Line**  
Extended zone of converging winds from east to northeast that often brings thunderstorms and rainshowers

**2 TROPICAL CYCLONE**  
Tropical Storm (TS) "Agaton" (April 9-12) and Typhoon (TY) "Basyang" (April 9, 2022)

## RAINFALL CONDITION

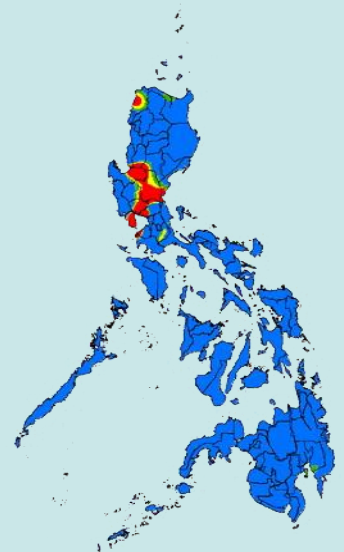
**ABOVE NORMAL**  
120% greater than the normal

Rest of the country

**WAY BELOW NORMAL**  
Greater than 60% reduction from the normal\*

**BELOW NORMAL**  
20%-60% reduction from the normal

Batanes, Bataan, Nueva Ecija and Pampanga



## TEMPERATURE

Near average to cooler than average surface temperatures were felt in most parts of the country.

Mountainous Luzon  
14.2°C – 26.7°C

Lowlands Luzon  
16.8°C – 37.5°C

Metro Manila  
22.6°C – 35.9°C

Visayas  
20.9°C – 35.8°C

Mountainous Mindanao  
17.2°C – 33.5°C

Lowlands Mindanao  
20.0°C – 35.8°C



# PAYONG PAGASA

## LA NIÑA ADVISORY NO. 8



Issued: 05 May 2022

### Outlook in May 2022

## EXPECTED WEATHER SYSTEMS

### (((H RIDGE OF HIGH PRESSURE AREA (HPA)

An extension of a high pressure area characterized by very light wind and clear skies



### LOCALIZED THUNDERSTORM

Isolated heavy and dense dark clouds with one or more sudden electric discharges manifested by lightning and thunder often accompanied by showers of rain.



SW

### SOUTHWEST MONSOON (HABAGAT)

Warm moist winds from the southwest causing rains over the western portion of the country from May to September transition to Southwest Monsoon

### L LOW PRESSURE AREA (LPA)

Areas of lowest pressure characterized by cloudiness and rainshowers; areas where a tropical cyclone can form



### INTERTROPICAL CONVERGENCE ZONE (ITCZ)

Series of low pressure areas brought about by converging northeast (NE) and southeast (SE) winds that cause thunderstorms and rainshowers



E

### EASTERLIES

Warm winds blowing from the east that may bring cloudiness over the eastern part of the country



### 0 or 1 TROPICAL CYCLONES

"Bagyo"; may refer to tropical depression, tropical storm, severe tropical storm, typhoon, or super typhoon.

## RAINFALL CONDITION

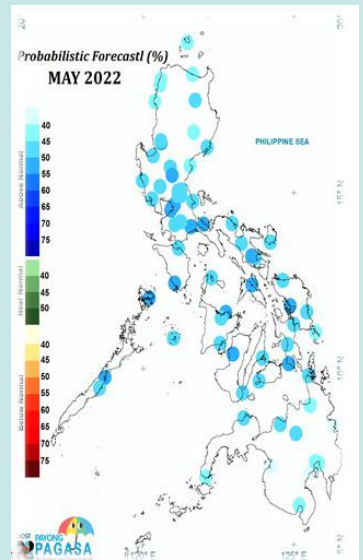
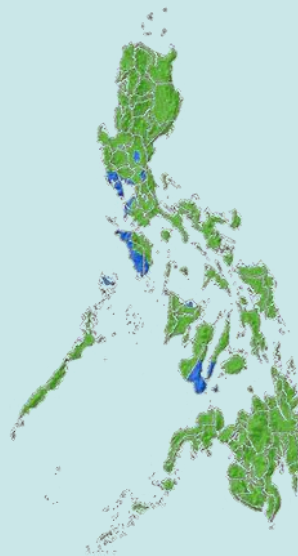


### NEAR NORMAL

+20% or -20% from the normal

Rest of the country

Probabilistic Forecast: high probability of having above normal rainfall conditions over most parts of the country.



## TEMPERATURE

Generally, near average to warmer than average surface air temperatures are predicted in most parts of the country.



Mountainous Luzon  
15.0°C - 29.4 °C



Metro Manila  
22.7 °C to 38.0 °C



Mountainous Mindanao  
15.7°C - 36.5 °C



Lowlands Luzon  
18.0°C - 40.3 °C



Visayas  
20.0°C - 37.9 °C



Lowlands Mindanao  
20.9°C to 38.4°C