



PAYONG PAGASA

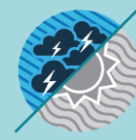
LA NIÑA ADVISORY NO. 3



Issued: 07 December 2021

OVERVIEW

Weak La Niña condition continuous to persists across the Tropical Pacific. Majority of climate models predict La Niña will likely continue through January-February-March 2022 season.



La Niña increases the likelihood of having above normal rainfall conditions across most areas of the country during the last quarter of the year and early months of the following year.

Assessment in November 2021

WEATHER SYSTEMS THAT AFFECTED THE COUNTRY

LOW PRESSURE AREA (LPA)

Areas of lowest pressure characterized by cloudiness and rainshowers; areas where a tropical cyclone can form

EASTERLIES

Warm winds blowing from the east that may bring cloudiness over the eastern part of the country

INTERTROPICAL CONVERGENCE ZONE (ITCZ)

Series of low pressure areas brought about by converging northeast (NE) and southeast (SE) winds that cause thunderstorms and rainshowers

LOCALIZED THUNDERSTORM

Isolated heavy and dense dark clouds with one or more sudden electric discharges manifested by lightning and thunder often accompanied by showers of rain.

NE NORTHEAST MONSOON (AMIHAN)

Cold winds from the northeast that bring rains over the eastern side of the country.

TAIL-END OF FRONTAL SYSTEM

Extended zone of converging winds From east to northeast that often brings thunderstorms and rainshowers

RAINFALL CONDITION



WAY BELOW NORMAL
Greater than 60% reduction from the normal*



BELOW NORMAL
20%-60% reduction from the normal



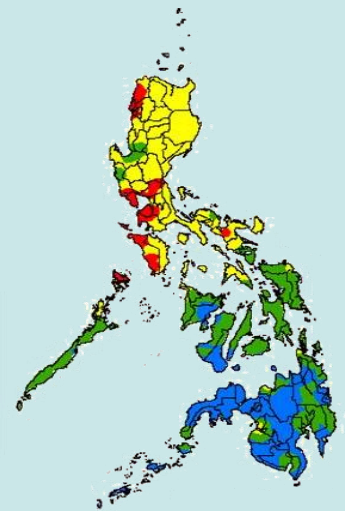
NEAR NORMAL
+20% or -20% from the normal



ABOVE NORMAL
120% greater than the normal

most parts of Luzon

Batanes, Sorsogon, Palawan and most parts of Visayas and Mindanao



TEMPERATURE

Average to warmer than average surface air temperatures were observed in most parts of the country except in some areas of Occidental Mindoro, Romblon, and South Cotabato, where slightly cooler than average surface air temperatures were experienced.



Mountainous Luzon
15.2°C – 26.6°C



Metro Manila
23°C – 34.8°C



Mountainous Mindanao
18°C – 33.2°C



Lowlands Luzon
19°C – 36.5°C



Visayas
22.3°C – 35°C



Lowlands Mindanao
21.6°C – 36.7°C



PAYONG PAGASA


LA NIÑA ADVISORY NO. 3





Issued: 07 December 2021


Outlook in December 2021


EXPECTED WEATHER SYSTEMS


E **EASTERLIES**
 Warm winds blowing from the east that may bring cloudiness over the eastern part of the country


(H) **RIDGE OF HIGH PRESSURE AREA (HPA)**
 An extension of a high pressure area characterized by very light wind and clear skies


NE **NORTHEAST MONSOON (AMIHAN)**
 Cold winds from the northeast that bring rains over the eastern side of the country.

 **LOCALIZED THUNDERSTORM**
 Isolated heavy and dense dark clouds with one or more sudden electric discharges manifested by lightning and thunder often accompanied by showers of rain.


L **LOW PRESSURE AREA (LPA)**
 Areas of lowest pressure characterized by cloudiness and rainshowers; areas where a tropical cyclone can form


TAIL-END OF FRONTAL SYSTEM
 Extended zone of converging winds From east to northeast that often brings thunderstorms and rainshowers

9 **1 to 2 TROPICAL CYCLONES**
 "Bagyo"; may refer to tropical depression, tropical storm, severe tropical storm, typhoon, or super typhoon.

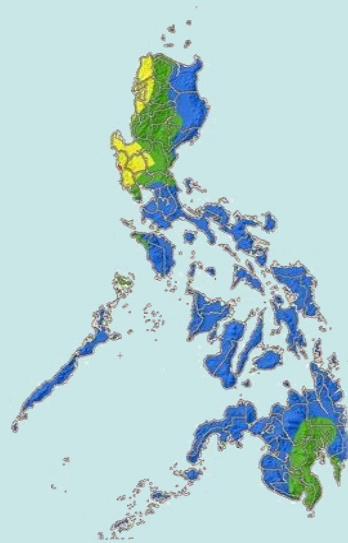
(Z) **INTERTROPICAL CONVERGENCE ZONE (ITCZ)**
 Series of low pressure areas brought about by converging northeast (NE) and southeast (SE) winds that cause thunderstorms and rainshowers

RAINFALL CONDITION

 **NEAR NORMAL**
 +20% or -20% from the normal


 **ABOVE NORMAL**
 120% greater than the normal


Most parts of the country





TEMPERATURE


Generally, near to warmer than average air temperatures are forecasted in most parts of the country except Batanes, Romblon and Southern Leyte, where slightly cooler to cooler than average surface air temperatures are expected.


 Mountainous Luzon
 10.0°C – 37.0°C

 Metro Manila
 19.0°C to 35.0°C

 Mountainous Mindanao
 17.0°C – 33.4°C

 Lowlands Luzon
 13.0°C – 37.0°C

 Visayas
 20.0°C – 35.0°C

 Lowlands Mindanao
 19.0°C – 36.5°C