

PAYONG PAGASA LA NIÑA ADVISORY NO. 2



Issued: 10 November 2021

OVERVIEW

La Niña persists across the tropical Pacific as sea surface temperature anomalies (SSTAs) strengthened during the month. Recent climate models predict La Niña will likely continue through January-February-March 2022 season.



La Niña increases the likelihood of having above normal rainfall conditions across most areas of the country during the last quarter of the year and early months of the following year.

Assessment in October 2021

WEATHER SYSTEMS THAT AFFECTED THE COUNTRY

L LOW PRESSURE AREA (LPA)

Areas of lowest pressure characterized by cloudiness and rainshowers; areas where a tropical cyclone can form



E EASTERLIES

Warm winds blowing from the east that may bring cloudiness over the eastern part of the country



3 TROPICAL CYCLONES

Tropical Depression "Lanie" (Oct 04 - 06)
Severe Tropical Storm "Maring" (Oct 08-12)
Tropical Depression "Nando" (Oct 9)

LOCALIZED THUNDERSTORM

Isolated heavy and dense dark clouds with one or more sudden electric discharges manifested by lightning and thunder often accompanied by showers of rain.



SW SOUTHWEST MONSOON (HABAGAT)

Warm moist winds from the southwest causing rains over the western portion of the country from May to September



INTERTROPICAL CONVERGENCE ZONE (ITCZ)

Series of low pressure areas brought about by converging northeast (NE) and southeast (SE) winds that cause thunderstorms and rainshowers

RAINFALL CONDITION



NEAR NORMAL

+20% or -20% from the normal



ABOVE NORMAL

120% greater than the normal

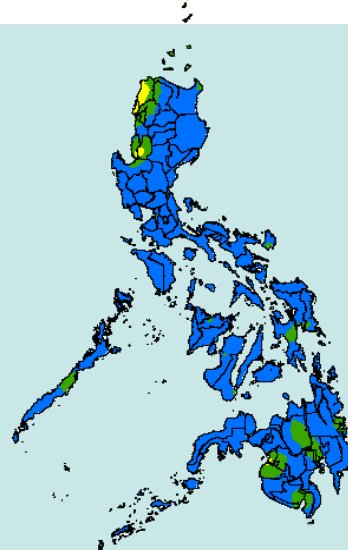
Most parts of the country



BELOW NORMAL

20%-60% reduction from the normal

Central Luzon



TEMPERATURE

Average to warmer than average surface air temperatures were observed in most parts of the country except in some areas where slightly cooler to cooler than average surface air temperatures were experienced.



Mountainous Luzon
15.0°C – 25.6°C



Metro Manila
22.4°C to 34.2°C



Mountainous Mindanao
18.5°C – 33.0°C



Lowlands Luzon
20.4°C – 35.0°C



Visayas
21.0°C – 35.0°C



Lowlands Mindanao
20.9°C – 35.4°C



PAYONG PAGASA

LA NIÑA ADVISORY NO. 2

Issued: 10 November 2021

Outlook in November 2021

EXPECTED WEATHER SYSTEMS



EASTERLIES

Warm winds blowing from the east that may bring cloudiness over the eastern part of the country



RIDGE OF HIGH PRESSURE AREA (HPA)

An extension of a high pressure area characterized by very light wind and clear skies

NE



NORTHEAST MONSOON (AMIHAN)

Cold winds from the northeast that bring rains over the eastern side of the country.



LOCALIZED THUNDERSTORM

Isolated heavy and dense dark clouds with one or more sudden electric discharges manifested by lightning and thunder often accompanied by showers of rain.



LOW PRESSURE AREA (LPA)

Areas of lowest pressure characterized by cloudiness and rainshowers; areas where a tropical cyclone can form



TAIL-END OF FRONTAL SYSTEM

Extended zone of converging winds from east to northeast that often brings thunderstorms and rainshowers



2 to 3 TROPICAL CYCLONES

"Bagyo"; may refer to tropical depression, tropical storm, severe tropical storm, typhoon, or super typhoon.



INTERTROPICAL CONVERGENCE ZONE (ITCZ)

Series of low pressure areas brought about by converging northeast (NE) and southeast (SE) winds that cause thunderstorms and rainshowers

RAINFALL CONDITION



NEAR NORMAL

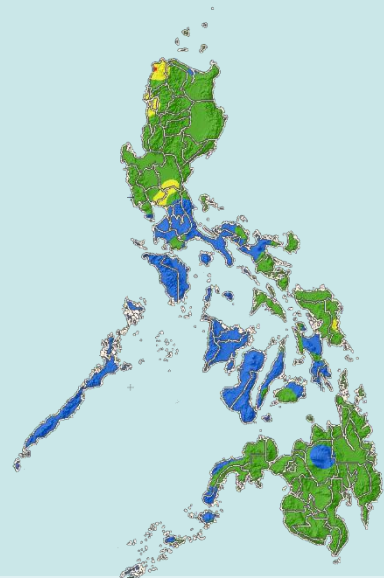
+20% or -20% from the normal



ABOVE NORMAL

120% greater than the normal

Most parts of the country



TEMPERATURE

Generally, near average to warmer than average air temperatures are forecasted in most parts of the country except Romblon and Southern Leyte, where slightly cooler to cooler than average surface air temperatures are expected.



Mountainous Luzon
12.0°C – 27.5°C



Metro Manila
20.3°C to 35.5°C



Mountainous Mindanao
15.0°C – 33.5°C



Lowlands Luzon
16.0°C – 39.0°C



Visayas
20.0°C – 37.0°C



Lowlands Mindanao
19.0°C – 37.0°C