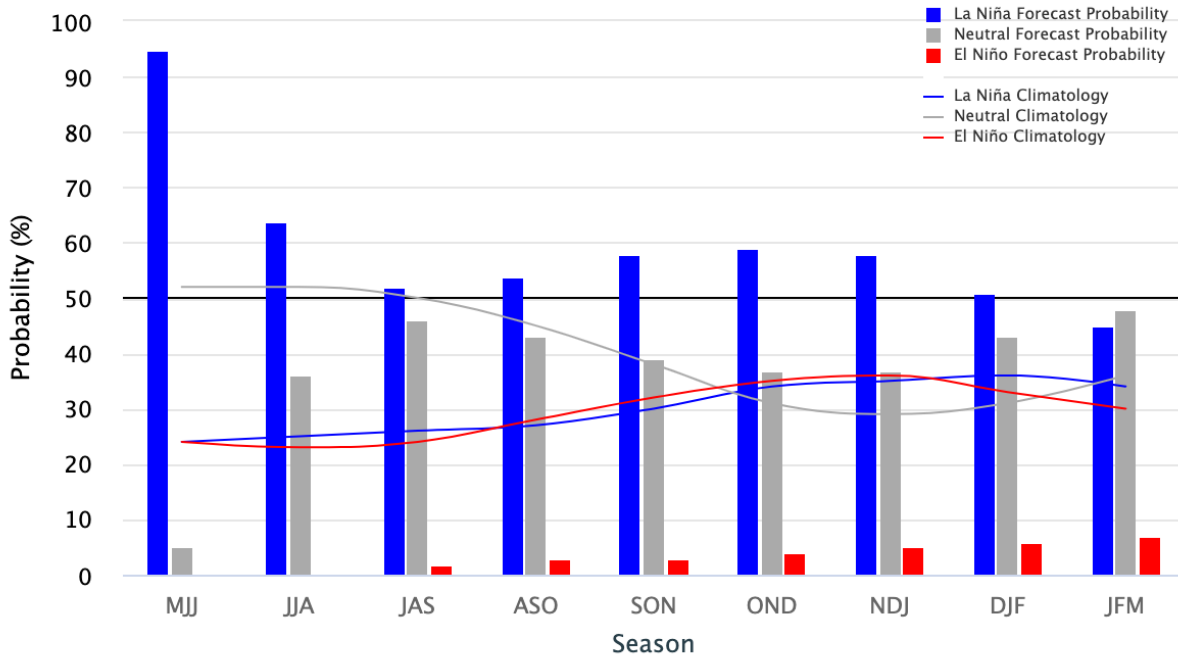


La Niña Update

Early-June 2022 CPC/IRI Official Probabilistic ENSO Forecasts

ENSO state based on NINO3.4 SST Anomaly
Neutral ENSO: -0.5°C to 0.5°C

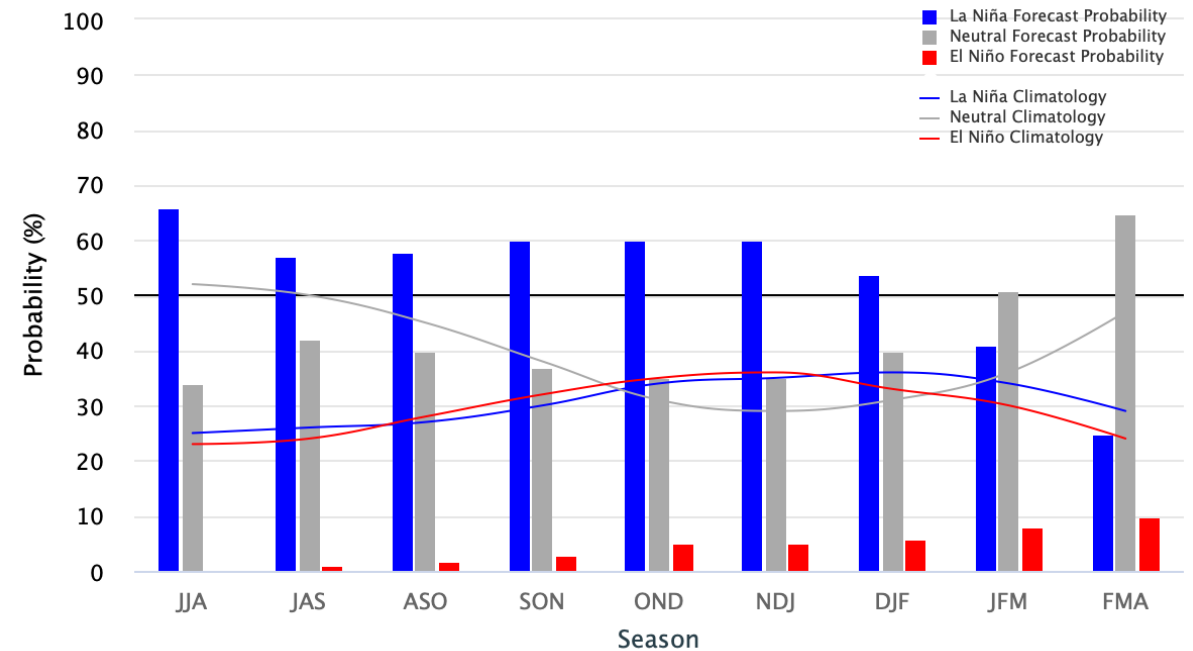


Model + Expert judgment ENSO probability forecast

What are the chances?

Mid-June 2022 IRI/CPC Model-Based Probabilistic ENSO Forecasts

ENSO state based on NINO3.4 SST Anomaly
Neutral ENSO: -0.5°C to 0.5°C



Purely objective ENSO probability forecast