

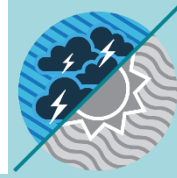


MONTHLY CLIMATE ASSESSMENT AND OUTLOOK LA NIÑA ALERT

Issued: 09 January 2025

OVERVIEW

La Niña condition is present in the tropical Pacific. Most climate models suggest that the current La Niña condition is expected to persist through January-February-March (JFM) 2025 season.



Higher chances of above normal rainfall in JFM 2025 season is expected, which may cause floods, flashfloods and rain-induced landslides. Furthermore, increased chance of tropical cyclone activity within the Philippine Area of Responsibility (PAR) during the period is likely.

Assessment in December 2024

WEATHER SYSTEMS THAT AFFECTED THE COUNTRY

NE **NORTHEAST MONSOON (AMIHAN)**
Cold and drier winds from the northeast bring rains over the eastern side of the country



E **EASTERLIES**
Warm winds blowing from the east may bring cloudiness over the eastern part of the country



LOCALIZED THUNDERSTORM
Warm isolated heavy and dense dark clouds with one or more sudden electric discharges manifested by lightning and thunder often accompanied by showers of rains.



PASSAGE OF TWO (2) TROPICAL CYCLONES OR BAGYO
TD Querubin; TD Romina



L **LOW PRESSURE AREA (LPA)**
Areas of lowest pressure characterized by cloudiness and rainshowers; areas where a tropical cyclone can form



INTERTROPICAL CONVERGENCE ZONE (ITCZ)
Series of low pressure areas brought about by converging Northeast (NE) and Southeast (SE) winds that cause thunderstorms and rainshowers



SHEAR LINE
Zone of converging winds associated with the extension of a frontal system that often brings thunderstorms and rainshowers



RAINFALL CONDITION

NEAR NORMAL
+20% or -20% from the normal

most parts of the country

ABOVE NORMAL
120% greater than the normal

BELOW NORMAL
20%-60% reduction from the normal

Abra, Benguet, Ilocos Region, Nueva Vizcaya, Central Luzon and Occidental Mindoro

WAY BELOW NORMAL
Greater than 80% reduction from the normal

Pangasinan



TEMPERATURE

Surface air temperatures in December were generally slightly warmer to warmer-than-average in most parts of the country.



Mountainous Luzon
13.7°C to 25.4°C



Lowlands Luzon
18.7°C to 36.2°C



Metro Manila
22.8°C to 33.7°C



Visayas
22.5°C to 35.4°C



Mountainous Mindanao
17.0°C to 33.5°C



Lowlands Mindanao
22.0°C to 35.2°C



MONTHLY CLIMATE ASSESSMENT AND OUTLOOK LA NIÑA ALERT

Issued: 09 January 2025

Outlook in January 2025

EXPECTED WEATHER SYSTEMS



NORTHEAST MONSOON (AMIHAN)

Cold and drier winds from the northeast bring rains over the eastern side of the country



LOCALIZED THUNDERSTORM

Warm isolated heavy and dense dark clouds with one or more sudden electric discharges manifested by lightning and thunder often accompanied by showers of rains.



LOW PRESSURE AREA (LPA)

Areas of lowest pressure characterized by cloudiness and rainshowers; areas where a tropical cyclone can form



PASSAGE OF 0-1 TROPICAL CYCLONE BAGYO

"Bagyo"; may refer to tropical depression, tropical storm, severe tropical storm, typhoon, or super typhoon.



EASTERLIES

Warm winds blowing from the east may bring cloudiness over the eastern part of the country



RIDGE OF HIGH PRESSURE AREA (HPA)

An extension of a high pressure area characterized by a very light wind and clear skies



SHEAR LINE

Zone of converging winds associated with the extension of a frontal system that often brings thunderstorms and rainshowers

RAINFALL CONDITION



NEAR NORMAL

+20% or -20% from the normal



ABOVE NORMAL

120% greater than the normal

most parts of the country



NEAR NORMAL

+20% or -20% from the normal



ABOVE NORMAL

120% greater than the normal

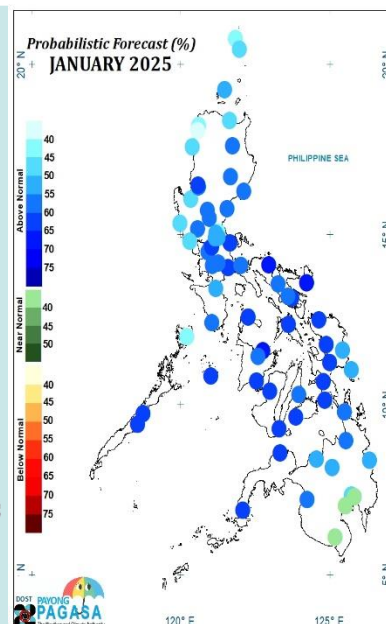
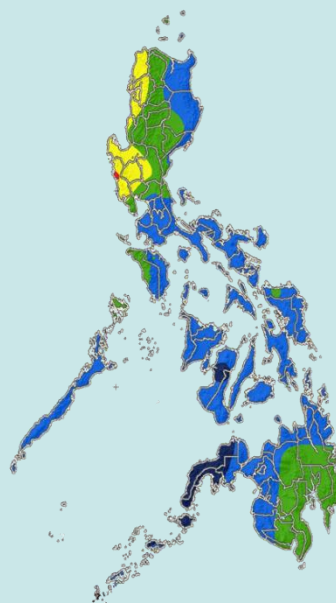
near- to above-normal rainfall conditions over most parts of the country will be highly likely



BELOW NORMAL

20%-60% reduction from the normal

Abra, Ilocos Norte, Ilocos Sur, Pangasinan, Tarlac and Zambales



TEMPERATURE

In terms of temperature, near-average to warmer-than-average surface air temperatures are generally expected in most parts of the country



Mountainous Luzon
10.2°C to 27.8°C



Metro Manila
19.0°C to 33.9°C



Mountainous Mindanao
13.7°C to 33.4°C



Lowlands Luzon
13.1°C to 35.5°C



Visayas
20.1°C to 35.0°C



Lowlands Mindanao
18.8°C to 37.1°C