

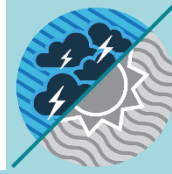


MONTHLY CLIMATE ASSESSMENT AND OUTLOOK LA NIÑA ALERT

Issued: 05 February 2025

OVERVIEW

La Niña conditions are still present in the tropical Pacific, as below average sea surface temperatures were observed. Most climate models suggest La Niña will persist through February-March-April 2025 season and then transition to ENSO-neutral during March-April-May 2025.



This condition increases the likelihood of having above-normal rainfall which could lead to potential adverse impacts such as heavy rainfall, floods, flash floods, and rain-induced landslides over highly vulnerable areas.

Assessment in January 2025

WEATHER SYSTEMS THAT AFFECTED THE COUNTRY



NE NORTHEAST MONSOON (AMIHAN)
Cold and drier winds from the northeast bring rains over the eastern side of the country



E EASTERLIES
Warm winds blowing from the east may bring cloudiness over the eastern part of the country



LOCALIZED THUNDERSTORM
Warm Isolated heavy and dense dark clouds with one or more sudden electric discharges manifested by lightning and thunder often accompanied by showers of rains.



LOW PRESSURE AREA (LPA)
Areas of lowest pressure characterized by cloudiness and rainshowers; areas where a tropical cyclone can form



INTERTROPICAL CONVERGENCE ZONE (ITCZ)
Series of low pressure areas brought about by converging Northeast (NE) and Southeast (SE) winds that cause thunderstorms and rainshowers



SHEAR LINE
Zone of converging winds associated with the extension of a frontal system that often brings thunderstorms and rainshowers

RAINFALL CONDITION

NEAR NORMAL
+20% or -20% from the normal

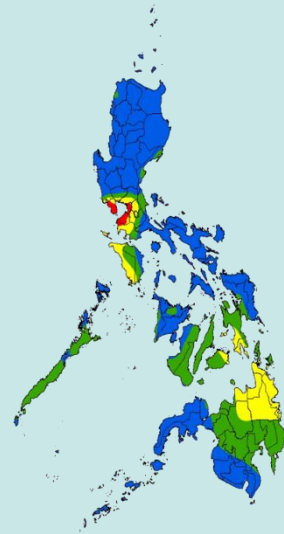
ABOVE NORMAL
120% greater than the normal

most parts of the country

WAY BELOW NORMAL
Greater than 80% reduction from the normal

BELOW NORMAL
20%-80% reduction from the normal

Most of CALABARZON including Metro Manila, Occidental Mindoro, Southern Leyte, and most parts of Caraga Region



TEMPERATURE

Surface air temperatures were generally slightly warmer to warmer than average in most parts of the country.



Mountainous Luzon
9.4°C – 25.2°C



Metro Manila
20.4°C – 33.0°C



Mountainous Mindanao
16.7°C – 34.4°C



Lowlands Luzon
14.7°C – 35.8°C



Visayas
21.0°C – 34.0°C



Lowlands Mindanao
21.8°C – 35.0°C



MONTHLY CLIMATE ASSESSMENT AND OUTLOOK LA NIÑA ALERT

Issued: 05 February 2025

Outlook in February 2025

EXPECTED WEATHER SYSTEMS



NE NORTHEAST MONSOON (AMIHAN)
Cold and drier winds from the northeast bring rains over the eastern side of the country



SHEAR LINE
Zone of converging winds associated with the extension of a frontal system that often brings thunderstorms and rainshowers



EASTERLIES
Warm winds blowing from the east may bring cloudiness over the eastern part of the country



LOCALIZED THUNDERSTORM
Warm isolated heavy and dense dark clouds with one or more sudden electric discharges manifested by lightning and thunder often accompanied by showers of rains.



RIDGE OF HIGH PRESSURE AREA (HPA)
An extension of a high pressure area characterized by a very light wind and clear skies



LOW PRESSURE AREA (LPA)
Areas of lowest pressure characterized by cloudiness and rainshowers; areas where a tropical cyclone can form



INTERTROPICAL CONVERGENCE ZONE (ITCZ)
Series of low pressure areas brought about by converging Northeast (NE) and Southeast (SE) winds that cause thunderstorms and rainshowers

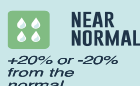


FRONTAL SYSTEM
Zone of converging winds that stays in one area for a while which often brings thunderstorms and rainshowers



PASSAGE OF 0 or 1 TROPICAL CYCLONE OR BAGYO
"Bagyo"; may refer to tropical depression, tropical storm, severe tropical storm, typhoon, or super typhoon.

RAINFALL CONDITION

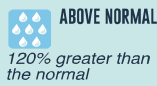


NEAR NORMAL
+20% or -20% from the normal



ABOVE NORMAL
120% greater than the normal

most parts of the country



ABOVE NORMAL
120% greater than the normal

above-normal rainfall conditions over most parts of the country will be highly likely

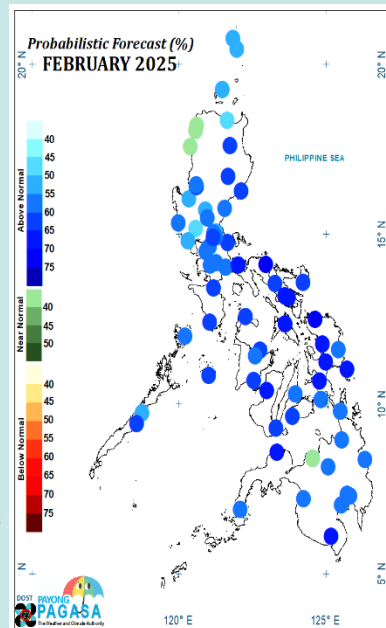
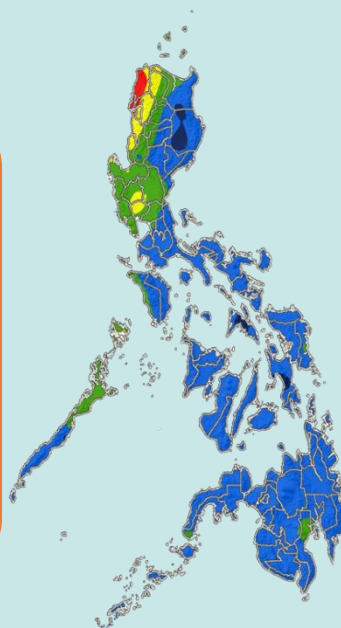


WAY BELOW NORMAL
Greater than 80% reduction from the normal



BELOW NORMAL
20%-60% reduction from the normal

some areas in the northwestern part of Luzon



TEMPERATURE

Generally, near average to warmer than average surface air temperatures are forecasted in most parts of the country, except in Batanes, Camarines Norte, Romblon, Masbate, Bohol, and Southern Leyte where slightly cooler to cooler than average temperature is expected.



Mountainous Luzon
10.1°C to 27.2°C



Metro Manila
19.0°C to 34.7°C



Mountainous Mindanao
13.6°C to 35.0°C



Lowlands Luzon
15.6°C to 36.3°C



Visayas
19.5°C to 35.8°C



Lowlands Mindanao
18.3°C to 37.5°C