



# PAYONG PAGASA

## LA NIÑA ADVISORY NO. 17

CLIMPS-09 Rev.0/06-01-22  
Issued: 06 January 2023

### OVERVIEW

Sea surface temperatures (SSTs) continue to decrease, hence, La Niña is weakening across the tropical Pacific Ocean. Most of the climate models suggest that La Niña will persist until January-February-March (JFM) 2023 season and then a transition to ENSO-neutral conditions is likely afterward.



La Niña increases the likelihood of having above normal rainfall conditions across most areas of the country. Adverse impacts such as flooding and landslides are still expected over vulnerable areas and sectors of the country.

### Assessment in January 2023

## WEATHER SYSTEMS THAT AFFECTED THE COUNTRY



#### NORTHEAST MONSOON (AMIHAN)

Cold and drier winds from the northeast bring rains over the eastern side of the country



#### LOW PRESSURE AREA (LPA)

Areas of lowest pressure characterized by cloudiness and rainshowers; areas where a tropical cyclone can form



#### INTERTROPICAL CONVERGENCE ZONE (ITCZ)

Series of low pressure areas brought about by converging northeast (NE) and southeast (SE) winds that cause thunderstorms and rainshowers



#### SHEAR LINE

Zone of converging winds associated with the extension of a frontal system that often brings thunderstorms and rainshowers



#### LOCALIZED THUNDERSTORM

Isolated heavy and dense dark clouds with one or more sudden electric discharges manifested by lightning and thunder often accompanied by showers of rain.



#### 0 TROPICAL CYCLONE

Tropical Storm (TS) Rosal with international name "PAKHAR" (Dec 10-12)

## RAINFALL CONDITION



#### BELOW NORMAL

20%-60% reduction from the normal

Davao Region and Ilocos provinces



#### NEAR NORMAL

+20% or -20% from the normal

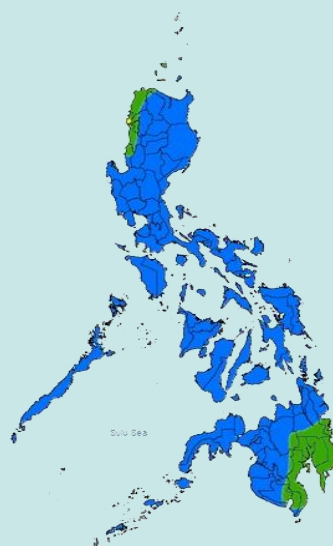
Province of Batanes



#### ABOVE NORMAL

120% greater than the normal

90% of the country



## TEMPERATURE

Generally, near average to slightly warmer than average mean surface air temperatures were felt in most parts of the country except for Tayabas, Daet, Coron, Romblon, Masbate, Guiuan, Surigao, Cotabato, and General Santos City where slightly cooler than average temperatures were observed.



Mountainous Luzon  
12.2°C – 25.2°C



Metro Manila  
20.7°C – 33.0°C



Mountainous Mindanao  
18.0°C – 32.5°C



Lowlands Luzon  
13.0°C – 34.9°C



Visayas  
21.2°C – 33.2°C



Lowlands Mindanao  
21.0°C – 35.3°C



# PAYONG PAGASA

## LA NIÑA ADVISORY NO. 17

CLIMPS-09 Rev.0/06-01-22

Issued: 06 February 2023

### Outlook in February 2023

## EXPECTED WEATHER SYSTEMS



### NORTHEAST MONSOON (AMIHAN)

Cold and drier winds from the northeast bring rains over the eastern side of the country



### EASTERLIES

Warm winds blowing from the east that may bring cloudiness over the eastern part of the country



### INTERTROPICAL CONVERGENCE ZONE (ITCZ)

Series of low pressure areas brought about by converging northeast (NE) and southeast (SE) winds that cause thunderstorms and rainshowers



### LOW PRESSURE AREA (LPA)

Areas of lowest pressure characterized by cloudiness and rainshowers; areas where a tropical cyclone can form



### LOCALIZED THUNDERSTORM

Isolated heavy and dense dark clouds with one or more sudden electric discharges manifested by lightning and thunder often accompanied by showers of rain.



### SHEAR LINE

Zone of converging winds associated with the extension of a frontal system that often brings thunderstorms and rainshowers



### 0 or 1 TROPICAL CYCLONES

"Bagyo"; may refer to tropical depression, tropical storm, severe tropical storm, typhoon, or super typhoon.

## RAINFALL CONDITION



### NEAR NORMAL

+20% or -20% from the normal



### ABOVE NORMAL

120% greater than the normal

Most areas of the country



### BELOW NORMAL

20%-60% reduction from the normal

some provinces over the western sections of northern and central Luzon



### NEAR NORMAL

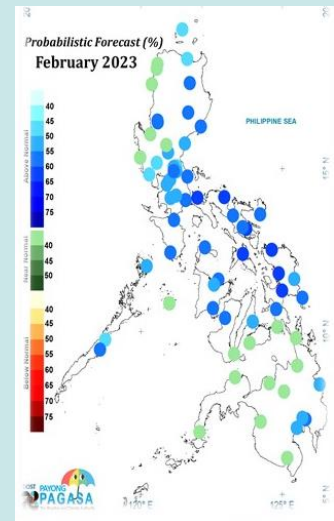
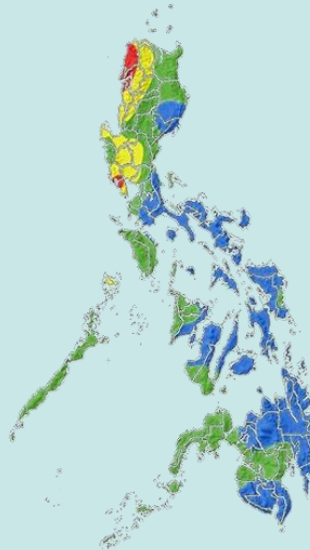
+20% or -20% from the normal



### ABOVE NORMAL

120% greater than the normal

high probability



## TEMPERATURE

Near to slightly cooler than average mean surface air temperatures are forecasted in most parts of the country, except for some areas that may experience slightly warmer than average temperatures.



Mountainous Luzon  
9.1°C to 28.1°C



Metro Manila  
18.2°C to 37.1°C



Mountainous Mindanao  
12.6°C to 33.8°C



Lowlands Luzon  
12.1°C to 36.3°C



Visayas  
18.8°C to 35.8°C



Lowlands Mindanao  
18.2°C to 37.1°C