

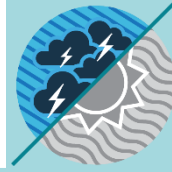


MONTHLY CLIMATE ASSESSMENT AND OUTLOOK LA NIÑA ALERT

Issued: 06 March 2025

OVERVIEW

La Niña conditions remain present in the tropical Pacific and are expected to persist through the February-March-April 2025 season. This condition increases the likelihood of having above-normal rainfall conditions, which could lead to potential adverse impacts such as heavy rainfall, floods, flash floods, and rain-induced landslides over highly vulnerable areas. Most climate models suggest a transition to the El Niño Southern Oscillation (ENSO) neutral phase during the March-April-May 2025 season.



This condition increases the likelihood of having above-normal rainfall which could lead to potential adverse impacts such as heavy rainfall, floods, flash floods, and rain-induced landslides over highly vulnerable areas.

Assessment in February 2025

WEATHER SYSTEMS THAT AFFECTED THE COUNTRY



NE NORTHEAST MONSOON (AMIHAN)
Cold and drier winds from the northeast bring rains over the eastern side of the country



E EASTERLIES
Warm winds blowing from the east may bring cloudiness over the eastern part of the country



LOCALIZED THUNDERSTORM
Warm Isolated heavy and dense dark clouds with one or more sudden electric discharges manifested by lightning and thunder often accompanied by showers of rains.



INTERTROPICAL CONVERGENCE ZONE (ITCZ)
Series of low pressure areas brought about by converging Northeast (NE) and Southeast (SE) winds that cause thunderstorms and rainshowers



SHEARLINE
Zone of converging winds associated with the extension of a frontal system that often brings thunderstorms and rainshowers

RAINFALL CONDITION



ABOVE NORMAL
120% to 160%
than normal



WAY ABOVE NORMAL
> 160% than normal

most parts of the country



NEAR NORMAL
+20% or -20%
from the normal

Central Visayas, most of Northern Mindanao, Davao Region and CARAGA



TEMPERATURE

Mean surface air temperatures observed across the country were near-average to above-average.



Mountainous Luzon
11.5°C – 25.5°C



Metro Manila
21.4°C – 33.9°C



Mountainous Mindanao
16.9°C – 33.0°C



Lowlands Luzon
16.3°C – 36.2°C



Visayas
21.0°C – 34.5°C



Lowlands Mindanao
21.5°C – 35.1°C



MONTHLY CLIMATE ASSESSMENT AND OUTLOOK LA NIÑA ALERT

Issued: 06 March 2025

Outlook in March 2025

EXPECTED WEATHER SYSTEMS



NE NORTHEAST MONSOON (AMIHAN)
Cold and drier winds from the northeast bring rains over the eastern side of the country



SHEAR LINE
Zone of converging winds associated with the extension of a frontal system that often brings thunderstorms and rainshowers



EASTERLIES
Warm winds blowing from the east may bring cloudiness over the eastern part of the country



LOCALIZED THUNDERSTORM
Warm isolated heavy and dense dark clouds with one or more sudden electric discharges manifested by lightning and thunder often accompanied by showers of rains.



RIDGE OF HIGH PRESSURE AREA (HPA)
An extension of a high pressure area characterized by a very light wind and clear skies



LOW PRESSURE AREA (LPA)
Areas of lowest pressure characterized by cloudiness and rainshowers; areas where a tropical cyclone can form



INTERTROPICAL CONVERGENCE ZONE (ITCZ)
Series of low pressure areas brought about by converging Northeast (NE) and Southeast (SE) winds that cause thunderstorms and rainshowers



PASSAGE OF 0 or 1 TROPICAL CYCLONE OR BAGYO
"Bagyo"; may refer to tropical depression, tropical storm, severe tropical storm, typhoon, or super typhoon.

RAINFALL CONDITION



ABOVE NORMAL
120% to 160% than normal

most parts of the country



NEAR NORMAL
+20% or -20% from the normal

parts of the Cordilleras



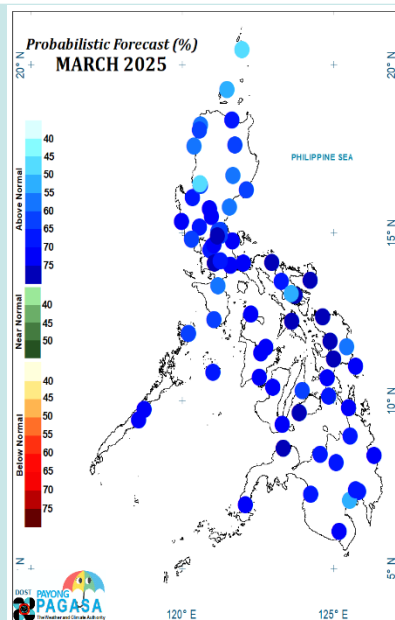
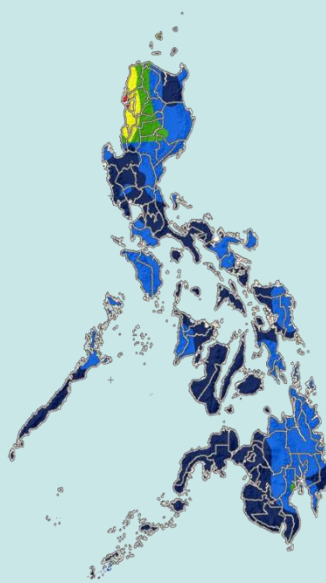
WAY ABOVE NORMAL
> 160% than normal

Central Luzon, CALABARZON, Central Visayas, and Western Mindanao



BELOW NORMAL
20%-60% reduction from the normal

parts of the Ilocos region



TEMPERATURE

Generally, near-average to above-average surface air temperatures are expected in most parts of the country during the month, except in some parts of MIMAROPA, where slightly below-average temperatures are expected.



Mountainous Luzon
11.6°C – 28.0°C



Metro Manila
20.0°C – 36.0°C



Mountainous Mindanao
14.3°C – 34.0°C



Lowlands Luzon
18.6°C – 37.5°C



Visayas
21.0°C – 35.7°C



Lowlands Mindanao
21.0°C – 36.0°C