



## MONTHLY CLIMATE ASSESSMENT AND OUTLOOK

Issued: 08 April 2025

### OVERVIEW

El Niño Southern Oscillation (ENSO)-neutral conditions are present in the tropical Pacific, as indicated in the recent analyses of sea surface temperature anomalies transitioned from La Niña conditions to ENSO-neutral levels. Most climate models suggest that the ENSO-neutral conditions are likely to persist through the September-October-November 2025 season.



Furthermore, as the warm and dry season persists, the public and all concerned government agencies are urged to sustain precautionary measures to minimize heat stress and prevent associated health risks.

### Assessment in March 2025

## WEATHER SYSTEMS THAT AFFECTED THE COUNTRY



**NE NORTHEAST MONSOON (AMIHAN)**  
Cold and drier winds from the northeast bring rains over the eastern side of the country



**E EASTERLIES**  
Warm winds blowing from the east may bring cloudiness over the eastern part of the country



**LOCALIZED THUNDERSTORM**  
Warm Isolated heavy and dense dark clouds with one or more sudden electric discharges manifested by lightning and thunder often accompanied by showers of rains.



**INTERTROPICAL CONVERGENCE ZONE (ITCZ)**  
Series of low pressure areas brought about by converging Northeast (NE) and Southeast (SE) winds that cause thunderstorms and rainshowers



**SHEAR LINE**  
Zone of converging winds associated with the extension of a frontal system that often brings thunderstorms and rainshowers



**LOW PRESSURE AREA (LPA)**  
Areas of lowest pressure characterized by cloudiness and rainshowers; areas where a tropical cyclone can form

## RAINFALL CONDITION



**ABOVE NORMAL**  
120% to 160%  
than normal



**WAY ABOVE NORMAL**  
> 160% than normal



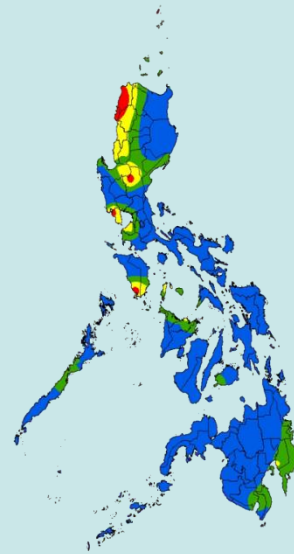
**BELOW NORMAL**  
20%-60% reduction  
from the normal



**NEAR NORMAL**  
+20% or -20%  
from the normal

most parts of the country

northwestern and central Luzon, southeastern Mindanao and MIMAROPA



## TEMPERATURE

Mean surface air temperatures observed across the country were near-average to above-average.



Mountainous Luzon  
12.1°C – 27.4°C



Metro Manila  
21.4°C – 35.5°C



Mountainous Mindanao  
17.0°C – 34.4°C



Lowlands Luzon  
18.4°C – 37.4°C



Visayas  
21.5°C – 35.0°C



Lowlands Mindanao  
21.8°C – 35.4°C




## MONTHLY CLIMATE ASSESSMENT AND OUTLOOK

Issued: 08 April 2025

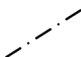
### Outlook in April 2025

## EXPECTED WEATHER SYSTEMS


**LOCALIZED THUNDERSTORM**  
Warm isolated heavy and dense dark clouds with one or more sudden electric discharges manifested by lightning and thunder often accompanied by showers of rains.




**SHEAR LINE**  
Zone of converging winds associated with the extension of a frontal system that often brings thunderstorms and rainshowers




**INTERTROPICAL CONVERGENCE ZONE (ITCZ)**  
Series of low pressure areas brought about by converging Northeast (NE) and Southeast (SE) winds that cause thunderstorms and rainshowers




**RIDGE OF HIGH PRESSURE AREA (HPA)**  
An extension of a high pressure area characterized by a very light wind and clear skies




**EASTERLIES**  
Warm winds blowing from the east may bring cloudiness over the eastern part of the country



**LOW PRESSURE AREA (LPA)**  
Areas of lowest pressure characterized by cloudiness and rainshowers; areas where a tropical cyclone can form



**PASSAGE OF 0 or 1 TROPICAL CYCLONE OR BAGYO**  
"Bagyo"; may refer to tropical depression, tropical storm, severe tropical storm, typhoon, or super typhoon.



## RAINFALL CONDITION

**BELOW NORMAL**  
20%-60% reduction from the normal




**NEAR NORMAL**  
+20% or -20% from the normal

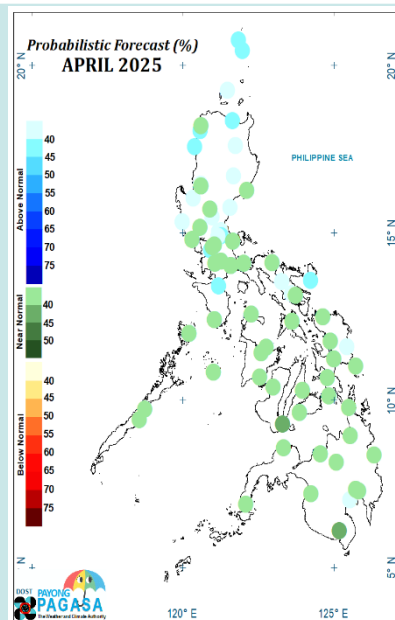
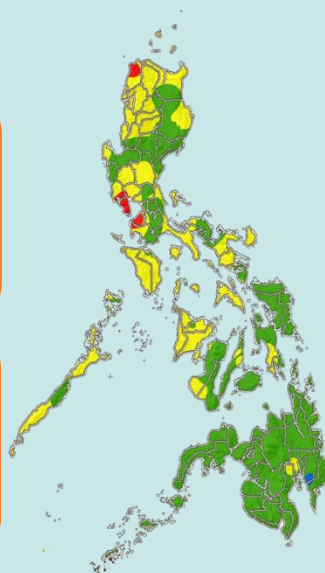


most parts of the country

**WAY BELOW NORMAL**  
Greater than 60% reduction from the normal\*




Bataan and Cavite




## TEMPERATURE

Generally, near to above average surface air temperatures are expected across most parts of the country, except for portions of MIMAROPA and northwestern Luzon, where slightly below average temperatures may be expected.


Mountainous Luzon  
12.5°C – 28.8°C




Metro Manila  
20.1°C – 38.1°C




Mountainous Mindanao  
14.5°C – 35.6°C



Lowlands Luzon  
18.5 °C – 39.3 °C



Visayas  
20.7°C – 37.0°C



Lowlands Mindanao  
21.2°C – 38.3°C

