



# PAYONG PAGASA

## MONTHLY CLIMATE ASSESSMENT AND OUTLOOK

### (EL NIÑO WATCH)

CLIMPS-10 Rev.0/06-01-22

Issued: 05 April 2023

#### OVERVIEW

ENSO-neutral conditions are present in the tropical Pacific and may prevail until the June-July-August (JJA) 2023 season. However, a transition to El Niño in the July-August-September (JAS) 2023 season is likely and may persist until 2024.



El Niño increases the likelihood of below-normal rainfall conditions, which could bring negative impacts (such as dry spells and droughts) in some areas of the country. However, over the western part of the country, above-normal rainfall conditions during the Southwest monsoon season (Habagat) may also be expected.

#### Assessment in March 2023

#### WEATHER SYSTEMS THAT AFFECTED THE COUNTRY



##### NORTHEAST MONSOON (AMIHAN)

Cold and drier winds from the northeast bring rains over the eastern side of the country



##### LOW PRESSURE AREA (LPA)

Areas of lowest pressure characterized by cloudiness and rainshowers; areas where a tropical cyclone can form



##### EASTERLIES

Warm winds blowing from the east may bring cloudiness over the eastern part of the country



##### SHEAR LINE

Zone of converging winds associated with the extension of a frontal system that often brings thunderstorms and rainshowers



##### LOCALIZED THUNDERSTORM

Warm isolated heavy and dense dark clouds with one or more sudden electric discharges manifested by lightning and thunder often accompanied by showers of rains.



##### ZERO TROPICAL CYCLONE

"Bagyo"; may refer to a tropical depression, tropical storm, severe tropical storm, typhoon, or super typhoon.



##### RIDGE OF HIGH PRESSURE AREA (HPA)

An extension of a high pressure area characterized by a very light wind and clear skies

#### RAINFALL CONDITION



##### WAY BELOW NORMAL

Greater than 60% reduction from the normal\*

33 provinces

most parts of Luzon, Central, and Western Visayas



##### BELOW NORMAL

20%-60% reduction from the normal

28 provinces



##### NEAR NORMAL

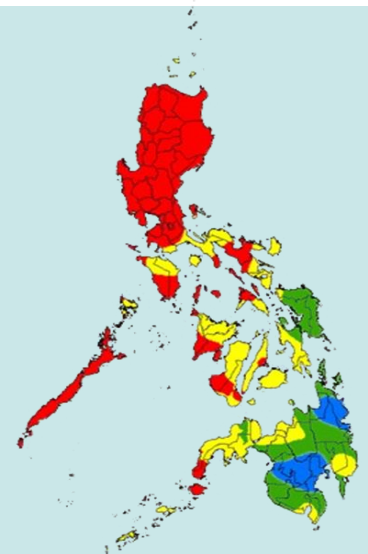
+20% or -20% from the normal

most parts of Mindanao and Samar



##### ABOVE NORMAL

120% greater than the normal



#### TEMPERATURE

Generally, near to below-average mean surface temperatures were observed in most parts of Luzon and Visayas. Furthermore, near to slightly above-average mean surface temperatures were observed over Mindanao.



Mountainous Luzon  
10.9°C – 28.4°C



Lowlands Luzon  
15.5°C – 37.0°C



Metro Manila  
19.5°C – 36.0°C



Visayas  
20.0°C – 35.0°C



Mountainous Mindanao  
16.5°C – 33.8°C



Lowlands Mindanao  
21.2°C – 35.9°C



## MONTHLY CLIMATE ASSESSMENT AND OUTLOOK (EL NIÑO WATCH)

CLIMPS-09 Rev.0/06-01-22

Issued: 05 April 2023

### Outlook in April 2023

## EXPECTED WEATHER SYSTEMS



#### EASTERLIES

Warm winds blowing from the east may bring cloudiness over the eastern part of the country



#### RIDGE OF HIGH PRESSURE AREA (HPA)

An extension of a high pressure area characterized by a very light wind and clear skies



#### LOW PRESSURE AREA (LPA)

Areas of lowest pressure characterized by cloudiness and rainshowers; areas where a tropical cyclone can form



#### LOCALIZED THUNDERSTORM

Warm isolated heavy and dense dark clouds with one or more sudden electric discharges manifested by lightning and thunder often accompanied by showers of rains.



#### INTERTROPICAL CONVERGENCE ZONE (ITCZ)

Series of low pressure areas brought about by converging Northeast (NE) and Southeast (SE) winds that cause thunderstorms and rainshowers



#### ZERO OR 1 TROPICAL CYCLONE

"Bagyo"; may refer to a tropical depression, tropical storm, severe tropical storm, typhoon, or super typhoon.

## RAINFALL CONDITION



#### WAY BELOW NORMAL

Greater than 60% reduction from the normal\*

Ilocos Norte, Bataan, and Cavite



#### BELOW NORMAL

20%-60% reduction from the normal

most parts of Luzon (High Probabilities)



#### NEAR NORMAL

+20% or -20% from the normal

Most parts of Visayas and Mindanao



#### NEAR NORMAL

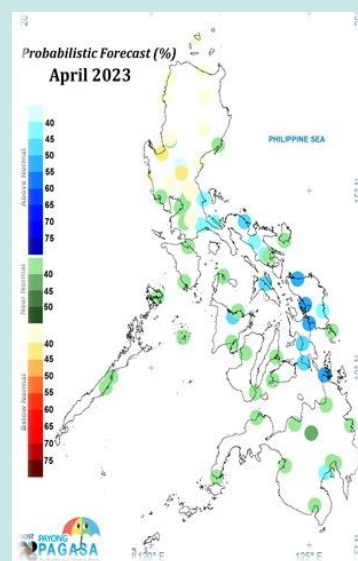
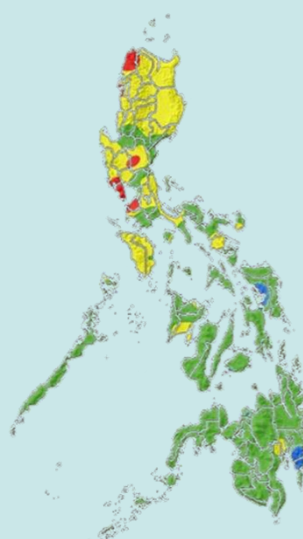
+20% or -20% from the normal



#### ABOVE NORMAL

120% greater than the normal

High probabilities over Visayas and Mindanao



## TEMPERATURE

Meanwhile, near average to below average mean surface air temperatures are forecasted in most parts of the country, except for Iba, Clark, Port Area, Alabat, Puerto Prinsesa, Dumaguete City, Dipolog City, Cotabato City, and Davao City that may experience slightly above to above average temperatures.



Mountainous Luzon  
12.2°C to 29.0°C



Metro Manila  
19.0°C to 36.0°C



Mountainous Mindanao  
15.0°C to 35.0°C



Lowlands Luzon  
15.8°C to 39.4°C



Visayas  
21.2°C to 36.8°C



Lowlands Mindanao  
20.4°C to 38.3°C