



## MONTHLY CLIMATE ASSESSMENT AND OUTLOOK

Issued: 03 July 2025

### OVERVIEW

ENSO-neutral conditions is present in the tropical Pacific. Most climate models suggest that these conditions may continue through the December-January-February 2025-2026 season.



As the rainy season progresses under ENSO-neutral conditions, rainfall patterns across the country will continue to be largely modulated by the Southwest (SW) monsoon or "Habagat" and other rain-bearing systems, which may bring episodes of heavy rainfall, gusty winds, localized floods, and rain-induced landslides particularly over the western sections of the country.

### Assessment in June 2025

## WEATHER SYSTEMS THAT AFFECTED THE COUNTRY



#### SOUTHWEST MONSOON (HABAGAT)

Warm moist winds from the southwest caused rains over the western portion of the country from May to September



#### EASTERLIES

Warm winds blowing from the east may bring cloudiness over the eastern part of the country



#### LOCALIZED THUNDERSTORM

Warm Isolated heavy and dense dark clouds with one or more sudden electric discharges manifested by lightning and thunder often accompanied by showers of rains.



#### LOW PRESSURE AREA (LPA)

Areas of lowest pressure characterized by cloudiness and rainshowers; areas where a tropical cyclone can form



#### INTERTROPICAL CONVERGENCE ZONE (ITCZ)

Series of low pressure areas brought about by converging Northeast (NE) and Southeast (SE) winds that cause thunderstorms and rainshowers



#### TROPICAL CYCLONE

TD Auring (June 12, 2025)

## RAINFALL CONDITION



**NEAR  
NORMAL**

+20% or -20%  
from the  
normal



**ABOVE NORMAL**

120% to 160%  
than normal

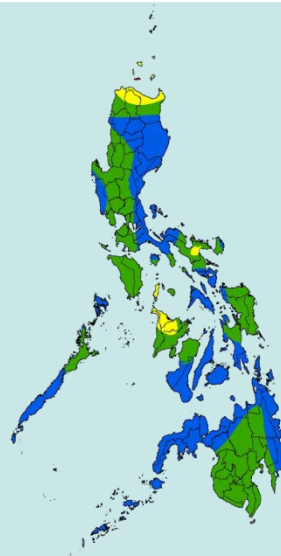


**BELOW  
NORMAL**

20%-60% reduction  
from the normal

most parts of the  
country

extreme portion of  
northern Luzon and  
northern part of  
Panay Island



## TEMPERATURE

Near-average mean surface air temperatures were observed in most parts of the country except in some areas in MIMAROPA, southern part of Samar province, and southwestern part of Mindanao where slightly cooler to cooler than average temperatures were experienced.



**Mountainous Luzon**  
16.4°C – 26.4°C



**Metro Manila**  
23.5°C – 36.2°C



**Mountainous Mindanao**  
18.0°C – 33.0°C



**Lowlands Luzon**  
19.0°C – 39.0°C



**Visayas**  
23.0°C – 36.0°C



**Lowlands Mindanao**  
21.7°C – 35.0°C



## MONTHLY CLIMATE ASSESSMENT AND OUTLOOK

Issued: 03 July 2025

### Outlook in July 2025

## EXPECTED WEATHER SYSTEMS



#### SOUTHWEST MONSOON (HABAGAT)

Warm moist winds from the southwest caused rains over the western portion of the country from May to September



#### EASTERLIES

Warm winds blowing from the east may bring cloudiness over the eastern part of the country



#### RIDGE OF HIGH PRESSURE AREA (HPA)

An extension of a high pressure area characterized by a very light wind and clear skies



#### LOCALIZED THUNDERSTORM

Warm Isolated heavy and dense dark clouds with one or more sudden electric discharges manifested by lightning and thunder often accompanied by showers of rains.



#### INTERTROPICAL CONVERGENCE ZONE (ITCZ)

Series of low pressure areas brought about by converging Northeast (NE) and Southeast (SE) winds that cause thunderstorms and rainshowers



#### LOW PRESSURE AREA (LPA)

Areas of lowest pressure characterized by cloudiness and rainshowers; areas where a tropical cyclone can form



#### SHEAR LINE

Zone of converging winds associated with the extension of a frontal system that often brings thunderstorms and rainshowers



#### FRONTAL SYSTEM

Zone of converging winds that stays in one area for a while which often brings thunderstorms and rainshowers



#### PASSAGE OF 2 OR 3 TROPICAL CYCLONE OR "BAGYO"

"Bagyo"; may refer to tropical depression, tropical storm, severe tropical storm, typhoon, or super typhoon.

## RAINFALL CONDITION



#### NEAR NORMAL

+20% or -20% from the normal

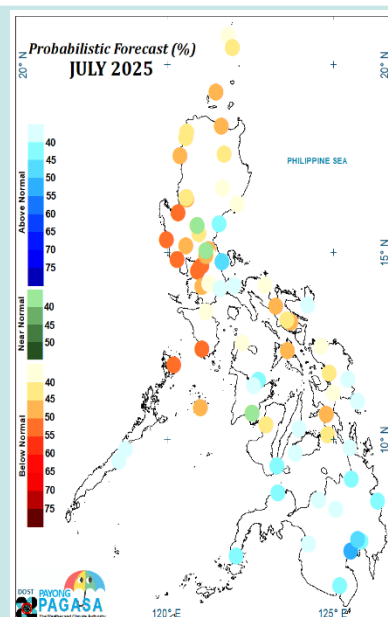
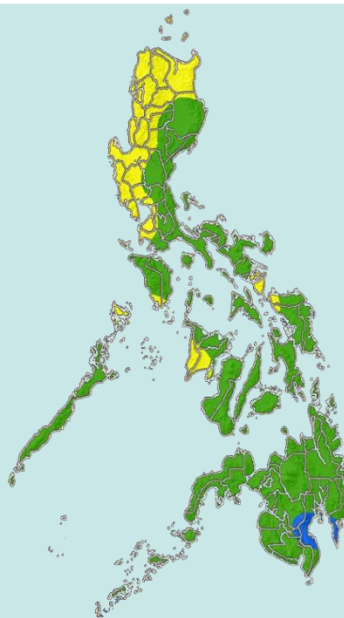
most parts of the country



#### BELOW NORMAL

20%-60% reduction from the normal

northwestern portion of Luzon



## TEMPERATURE

Generally, slightly warmer to warmer than average surface temperatures are predicted in most parts of the country except in some areas in Bicol Region and MIMAROPA that might experience near to slightly cooler than average temperatures.



Mountainous Luzon  
13.4°C to 27.0°C



Metro Manila  
20.1°C to 36.3°C



Mountainous Mindanao  
15.5°C to 32.7°C



Lowlands Luzon  
19.3°C to 38.4°C



Visayas  
19.3°C to 36.5°C



Lowlands Mindanao  
20.1°C to 36.3°C