

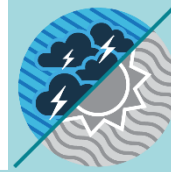


MONTHLY CLIMATE ASSESSMENT AND OUTLOOK LA NIÑA ALERT

Issued: 07 August 2024

OVERVIEW

El Niño Southern Oscillation (ENSO)-neutral conditions are present in the tropical Pacific and may continue until the July-August-September (JAS) 2024 season. Meanwhile, the majority of forecasts from global climate models, combined with expert judgments, suggest a 70% probability of La Niña emerging in the August-September-October (ASO) 2024 season. This has warranted the upgrading of the DOST-PAGASA ENSO Alert and Warning System to a La Niña Alert, as indicated in the press release dated 12 July 2024. La Niña remains the most likely category through January-February-March (JFM) 2025 season.



La Niña increases the likelihood of having above-normal rainfall conditions, which could lead to potential adverse impacts such as heavy rainfall, floods, flash floods, and rain-induced landslides over highly vulnerable areas.

Assessment in July 2024

WEATHER SYSTEMS THAT AFFECTED THE COUNTRY



SOUTHWEST MONSOON (HABAGAT)

Warm moist winds from the southwest caused rains over the western portion of the country from May to September



INTERTROPICAL CONVERGENCE ZONE (ITCZ)

Series of low pressure areas brought about by converging Northeast (NE) and Southeast (SE) winds that cause thunderstorms and rainshowers



LOW PRESSURE AREA (LPA)

Areas of lowest pressure characterized by cloudiness and rainshowers; areas where a tropical cyclone can form



EASTERLIES

Warm winds blowing from the east may bring cloudiness over the eastern part of the country



LOCALIZED THUNDERSTORM

Warm isolated heavy and dense dark clouds with one or more sudden electric discharges manifested by lightning and thunder often accompanied by showers of rains.



PASAGE OF TWO (2) TROPICAL CYCLONES

Tropical Depression Butchoy {Prapiroon} on July 19-20 and Super Typhoon (STY) Carina {Gaemi} on July 19-25.

RAINFALL CONDITION



ABOVE NORMAL

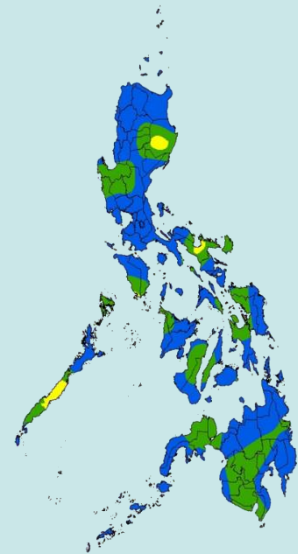
120% greater than the normal



NEAR NORMAL

+20% or -20% from the normal

most parts of the country



*Assessment of rainfall for July revealed twenty-three (23) provinces received near normal rainfall while sixty-one (61) provinces received above normal rainfall throughout the country.

TEMPERATURE *Mean surface air temperatures observed across the country were near-average to above-average.*



Mountainous Luzon
16.0°C – 26.6°C



Metro Manila
23.4°C – 35.4°C



Mountainous Mindanao
19.0°C – 33.2°C



Lowlands Luzon
22.0°C – 37.2°C



Visayas
23.0°C – 36.0°C



Lowlands Mindanao
21.6°C – 35.5°C



MONTHLY CLIMATE ASSESSMENT AND OUTLOOK LA NIÑA ALERT

Issued: 07 August 2024

Outlook in August 2024

EXPECTED WEATHER SYSTEMS



SOUTHWEST MONSOON (HABAGAT)

Warm moist winds from the southwest caused rains over the western portion of the country from May to September



EASTERLIES

Warm winds blowing from the east may bring cloudiness over the eastern part of the country



RIDGE OF HIGH PRESSURE AREA (HPA)

An extension of a high pressure area characterized by a very light wind and clear skies



LOCALIZED THUNDERSTORM

Warm isolated heavy and dense dark clouds with one or more sudden electric discharges manifested by lightning and thunder often accompanied by showers of rains.



INTERTROPICAL CONVERGENCE ZONE (ITCZ)

Series of low pressure areas brought about by converging Northeast (NE) and Southeast (SE) winds that cause thunderstorms and rainshowers



LOW PRESSURE AREA (LPA)

Areas of lowest pressure characterized by cloudiness and rainshowers; areas where a tropical cyclone can form



SHEAR LINE

Zone of converging winds associated with the extension of a frontal system that often brings thunderstorms and rainshowers



PASSAGE OF 2 OR 3 TROPICAL CYCLONES OR BAGYO

"Bagyo"; may refer to tropical depression, tropical storm, severe tropical storm, typhoon, or super typhoon.

RAINFALL CONDITION



NEAR NORMAL

+20% or -20% from the normal

most parts of the country



ABOVE NORMAL

120% greater than the normal

Misamis Oriental and Agusan del Norte



NEAR NORMAL

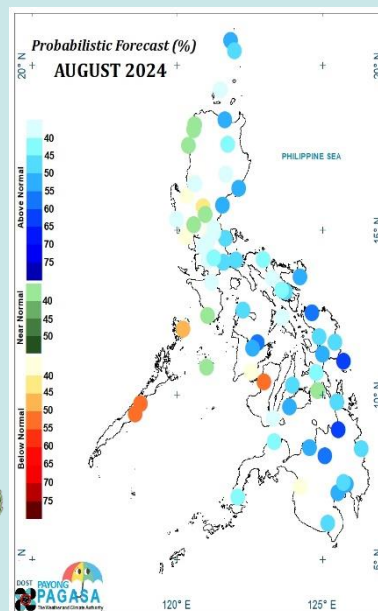
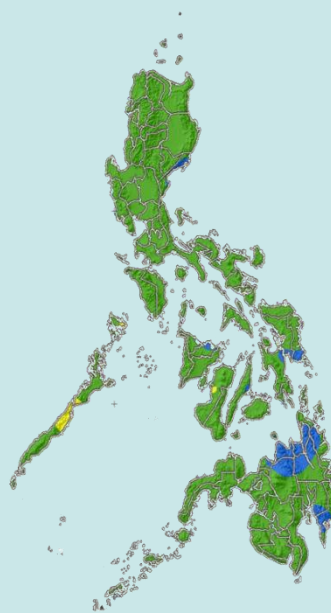
+20% or -20% from the normal



ABOVE NORMAL

120% greater than the normal

High probability that most parts of the country will likely receive near to above normal rainfall



TEMPERATURE

Generally, near-average to above-average surface air temperatures are expected in most parts of the country this month except in some parts of MIMAROPA, where slightly below-average temperatures are expected.



Mountainous Luzon
13.5°C – 27.5°C



Metro Manila
21.0°C – 36.5°C



Mountainous Mindanao
12.0°C – 33.5°C



Lowlands Luzon
15.5°C – 37.0°C



Visayas
20.0°C – 37.0°C



Lowlands Mindanao
20.5°C – 37.0°C