



MONTHLY CLIMATE ASSESSMENT AND OUTLOOK

Issued: 07 August 2025

OVERVIEW

ENSO-neutral conditions are present in the tropical Pacific, with near average equatorial sea surface temperatures (SSTs) across most of the Pacific Ocean. Most climate models suggest that these conditions will likely persist until the February-March-April 2026 season. However, climate models suggest higher-than-climatology likelihood for La Niña conditions through the Dec-Jan-Feb 2026 season.



As the rainy season continues under ENSO-neutral conditions, rainfall over the country will be primarily influenced by the Southwest (SW) monsoon or "Habagat". The SW monsoon may be enhanced at times by the passage of tropical cyclones and other rain-bearing weather systems. These may bring episodes of heavy rainfall, gusty winds, localized flooding, and rain-induced landslides, particularly over the western sections of the country.

Assessment in July 2025

WEATHER SYSTEMS THAT AFFECTED THE COUNTRY



SW

SOUTHWEST MONSOON (HABAGAT)

Warm moist winds from the southwest caused rains over the western portion of the country from May to September



LOCALIZED THUNDERSTORM

Warm isolated heavy and dense dark clouds with one or more sudden electric discharges manifested by lightning and thunder often accompanied by showers of rains.



LOW PRESSURE AREA (LPA)

Areas of lowest pressure characterized by cloudiness and rainshowers; areas where a tropical cyclone can form



TROPICAL CYCLONE

- Typhoon (TY) "Bising" (Danas) from July 4 to 7
- Severe Tropical Storm (STS) "Crising" (Wipha) from July 16 to 19
- Tropical Storm (TS) "Dante" (Francisco) from July 22 to 24
- Typhoon (TY) "Emong" (Co-may) from July 23 to 26

RAINFALL CONDITION



NEAR
NORMAL

+20% or ~20%
from the
normal



ABOVE NORMAL

120% to 160%
than normal

most of northern
and western Luzon,
as well as parts of
Mindanao



BELOW
NORMAL

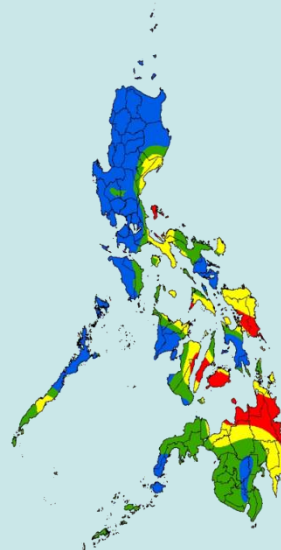
20%-60% reduction
from the normal



WAY BELOW
NORMAL

Greater than 60%
reduction from the
normal

parts of Visayas, Bicol
region, and Northern
Mindanao



TEMPERATURE

Near average to cooler-than-average mean surface air temperatures were observed in most parts of the country, particularly in northern and western Luzon and isolated areas of Mindanao while slightly warmer to warmer-than-average conditions were observed over most of Visayas, Bicol, and portions of Mindanao.



Mountainous Luzon
16.2°C – 25.0°C



Metro Manila
23.9°C – 33.2°C



Mountainous Mindanao
18.0°C – 33.5°C



Lowlands Luzon
20.0°C – 37.2°C



Visayas
23.4°C – 37.2°C



Lowlands Mindanao
21.7°C – 37.2°C



MONTHLY CLIMATE ASSESSMENT AND OUTLOOK

Issued: 07 August 2025

Outlook in August 2025

EXPECTED WEATHER SYSTEMS



SOUTHWEST MONSOON (HABAGAT)

Warm moist winds from the southwest caused rains over the western portion of the country from May to September



EASTERLIES

Warm winds blowing from the east may bring cloudiness over the eastern part of the country



LOW PRESSURE AREA (LPA)

Areas of lowest pressure characterized by cloudiness and rainshowers; areas where a tropical cyclone can form



INTERTROPICAL CONVERGENCE ZONE (ITCZ)

Series of low pressure areas brought about by converging Northeast (NE) and Southeast (SE) winds that cause thunderstorms and rainshowers



LOCALIZED THUNDERSTORM

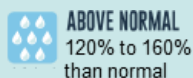
Warm Isolated heavy and dense dark clouds with one or more sudden electric discharges manifested by lightning and thunder often accompanied by showers of rains.



PASSAGE OF 2 OR 3 TROPICAL CYCLONE OR "BAGYO"

"Bagyo"; may refer to tropical depression, tropical storm, severe tropical storm, typhoon, or super typhoon.

RAINFALL CONDITION



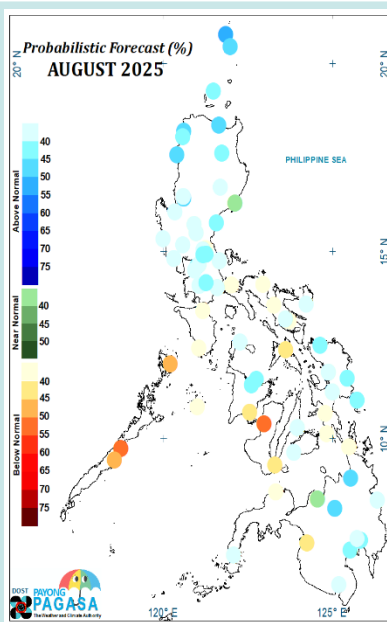
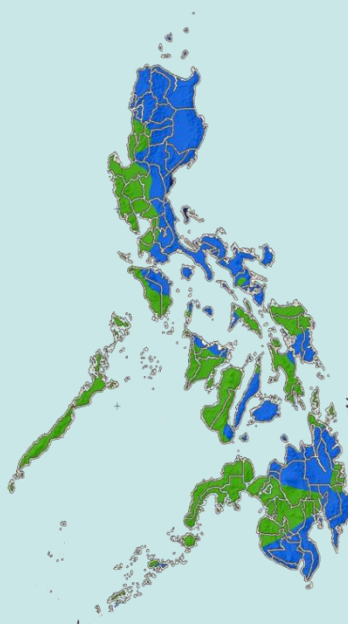
ABOVE NORMAL
120% to 160%
than normal

northern and
eastern parts of
Luzon, central
Visayas, and
northeastern and
southern parts of
Mindanao



**NEAR
NORMAL**
+20% or -20%
from the
normal

rest of the
country



TEMPERATURE

The temperature forecast for the month suggests that slightly warmer than average conditions are expected across most parts of the country except for some areas that might experience near to slightly cooler than average mean surface temperature particularly in high altitudes areas.



Mountainous Luzon
14.0°C to 27.3°C



Metro Manila
22.0°C to 36.1°C



Mountainous Mindanao
13.9°C to 33.4°C



Lowlands Luzon
19.7°C to 38.1°C



Visayas
20.6°C to 36.4°C



Lowlands Mindanao
20.0°C to 33.4°C