

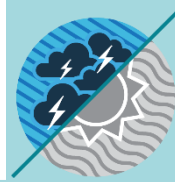


MONTHLY CLIMATE ASSESSMENT AND OUTLOOK LA NIÑA ALERT

Issued: 04 September 2024

OVERVIEW

El Niño Southern Oscillation (ENSO)-neutral conditions continue to prevail over the tropical Pacific Ocean. Most climate models combined with expert judgments suggest a 66% chance of La Niña forming in Sept-Oct-Nov (SON) 2024 season and will likely persist until the first quarter (Jan-Feb-Mar) of 2025. With these model probabilities, borderline La Niña or La Niña-like conditions will be likely in the coming months.



La Niña increases the likelihood of having above-normal rainfall conditions, which could lead to potential adverse impacts such as heavy rainfall, floods, flash floods, and rain-induced landslides over highly vulnerable areas.

Assessment in August 2024

WEATHER SYSTEMS THAT AFFECTED THE COUNTRY



SOUTHWEST MONSOON (HABAGAT)

Warm moist winds from the southwest caused rains over the western portion of the country from May to September



INTERTROPICAL CONVERGENCE ZONE (ITCZ)

Series of low pressure areas brought about by converging Northeast (NE) and Southeast (SE) winds that cause thunderstorms and rainshowers



LOW PRESSURE AREA (LPA)

Areas of lowest pressure characterized by cloudiness and rainshowers; areas where a tropical cyclone can form



EASTERLIES

Warm winds blowing from the east may bring cloudiness over the eastern part of the country



LOCALIZED THUNDERSTORM

Warm isolated heavy and dense dark clouds with one or more sudden electric discharges manifested by lightning and thunder often accompanied by showers of rains.



PASSAGE OF ONE (1) TROPICAL CYCLONE OR BAGYO

Tropical Storm (TS) "Dindo" with international name "JONGDARI" on August 18-19, 2024

RAINFALL CONDITION



WAY BELOW NORMAL

Greater than 60% reduction from the normal*



BELOW NORMAL

20%-60% reduction from the normal



NEAR NORMAL

+20% or -20% from the normal

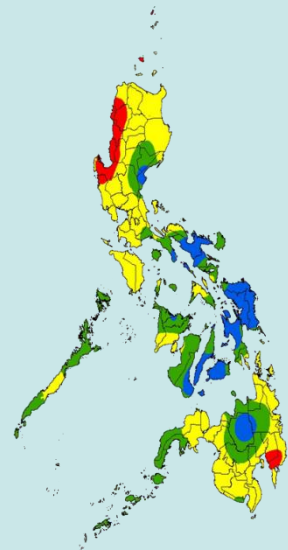


ABOVE NORMAL

120% greater than the normal

most parts of Luzon and Mindanao

most parts of Visayas, Bicol Region, Central Mindanao and the rest of the country



TEMPERATURE

Surface air temperatures were generally slightly above average to way above average in most parts of the country.



Mountainous Luzon
16.2°C – 26.2°C



Metro Manila
24.2°C – 35.9°C



Mountainous Mindanao
19.4°C – 34.6°C



Lowlands Luzon
23.0°C – 37.1°C



Visayas
24.0°C – 36.0°C



Lowlands Mindanao
22.4°C – 36.5°C



MONTHLY CLIMATE ASSESSMENT AND OUTLOOK LA NIÑA ALERT

Issued: 04 September 2024

Outlook in September 2024

EXPECTED WEATHER SYSTEMS



SOUTHWEST MONSOON (HABAGAT)
Warm moist winds from the southwest caused rains over the western portion of the country from May to September



EASTERLIES
Warm winds blowing from the east may bring cloudiness over the eastern part of the country



RIDGE OF HIGH PRESSURE AREA (HPA)
An extension of a high pressure area characterized by a very light wind and clear skies



LOCALIZED THUNDERSTORM
Warm isolated heavy and dense dark clouds with one or more sudden electric discharges manifested by lightning and thunder often accompanied by showers of rains.



INTERTROPICAL CONVERGENCE ZONE (ITCZ)
Series of low pressure areas brought about by converging Northeast (NE) and Southeast (SE) winds that cause thunderstorms and rainshowers



LOW PRESSURE AREA (LPA)
Areas of lowest pressure characterized by cloudiness and rainshowers; areas where a tropical cyclone can form



PASSAGE OF 2 OR 3 TROPICAL CYCLONES OR BAGYO
"Bagyo"; may refer to tropical depression, tropical storm, severe tropical storm, typhoon, or super typhoon.

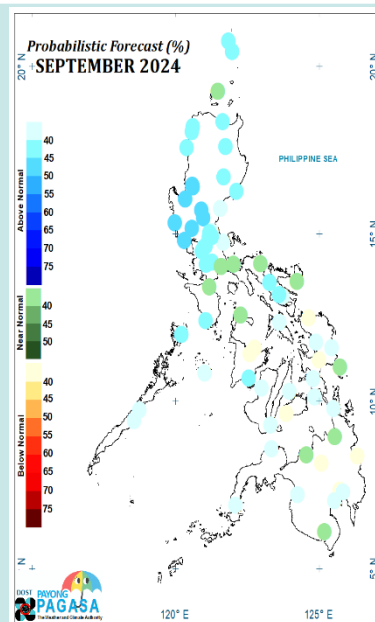
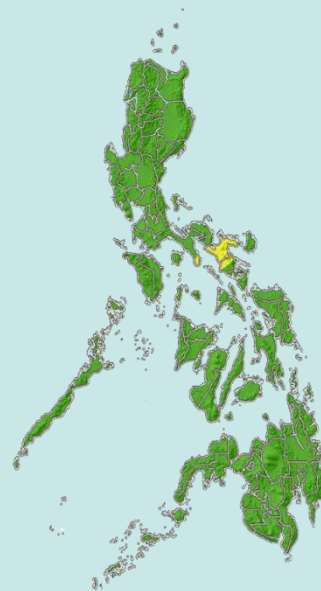
RAINFALL CONDITION

NEAR NORMAL
+20% or -20% from the normal

NEAR NORMAL **ABOVE NORMAL**
+20% or -20% from the normal 120% greater than the normal

across the country

High probability that most parts of the country will likely receive near to above normal rainfall



TEMPERATURE

Generally, near average to warmer than average surface air temperatures are predicted in most parts of the country in September except for some stations in Southern Luzon and Visayas where slightly below to below average temperatures are likely.



Mountainous Luzon
14.0°C to 26.5°C



Metro Manila
22.0°C to 35.5°C



Mountainous Mindanao
14.5°C to 33.5°C



Lowlands Luzon
16.0°C to 36.5°C



Visayas
20.5°C to 36.5°C



Lowlands Mindanao
20.5°C to 36.5°C