



PAYONG PAGASA

LA NIÑA ADVISORY NO. 13

OVERVIEW

La Niña continues to persist in the tropical Pacific, as reflected by below average (≤ -0.5 to -1.0°C) sea surface temperature anomalies (SSTAs). Majority of climate models suggest La Niña is likely to continue until Dec-Jan-Feb (DJF) 2022-23 and then transition to ENSO-neutral condition afterwards.

Issued: 06 October 2022



La Niña increases the likelihood of having above normal rainfall conditions across most areas of the country. Adverse impacts such as flooding and landslides are still expected over vulnerable areas and sectors of the country.

Assessment in September 2022

WEATHER SYSTEMS THAT AFFECTED THE COUNTRY



SW SOUTHWEST MONSOON (HABAGAT)

Warm moist winds from the southwest causing rains over the western portion of the country from May to September



L LOW PRESSURE AREA (LPA)

Areas of lowest pressure characterized by cloudiness and rainshowers; areas where a tropical cyclone can form



ITCZ INTERTROPICAL CONVERGENCE ZONE (ITCZ)

Series of low pressure areas brought about by converging northeast (NE) and southeast (SE) winds that cause thunderstorms and rainshowers



E EASTERLIES

Warm winds blowing from the east that may bring cloudiness over the eastern part of the country



LOCALIZED THUNDERSTORM

Isolated heavy and dense dark clouds with one or more sudden electric discharges manifested by lightning and thunder often accompanied by showers of rain.



4 TROPICAL CYCLONE

- Typhoon (TY) "Inday" (Sept. 7-12)
- Super Typhoon (STY) "Josie" (Sept. 16)
- STY "Karding" (Sep 22-26)
- Severe Tropical Storm "Luis" (Sept. 28-29)

RAINFALL CONDITION



NEAR NORMAL

+20% or -20% from the normal



ABOVE NORMAL

120% greater than the normal

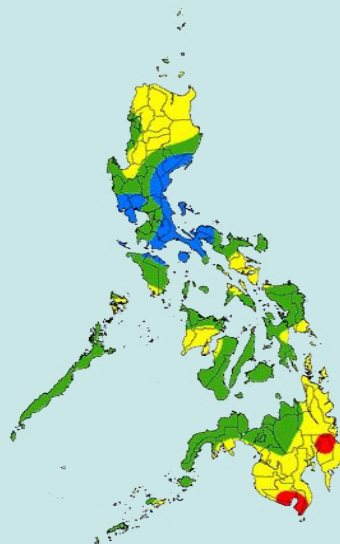


BELOW NORMAL

20%-60% reduction from the normal

most parts of Luzon, Visayas, Zamboanga Peninsula, Northern Mindanao and BARRM

CAR, rest of Region II, rest of Panay and most parts of Mindanao



TEMPERATURE

Generally, near to slightly warmer than average surface temperatures were felt in most parts of the country except for some areas in MIMAROPA, Calayan, Cagayan and Daet, Camarines Norte where slightly cooler to cooler than average surface temperatures were experienced.



Mountainous Luzon
15.3°C – 25.6°C



Metro Manila
23.3°C – 35.3°C



Mountainous Mindanao
17.4°C – 33.0°C



Lowlands Luzon
19.1°C – 36.8°C



Visayas
22.7°C – 36.8°C



Lowlands Mindanao
21.2°C – 36.5°C



PAYONG PAGASA

LA NIÑA ADVISORY NO. 13

Issued: 06 October 2022

Outlook in October 2022

EXPECTED WEATHER SYSTEMS



NORTHEAST MONSOON (AMIHAN)

Cold and drier winds from the northeast bring rains over the eastern side of the country

**Transition to Northeast Monsoon*



EASTERLIES

Warm winds blowing from the east that may bring cloudiness over the eastern part of the country



INTERTROPICAL CONVERGENCE ZONE (ITCZ)

Series of low pressure areas brought about by converging northeast (NE) and southeast (SE) winds that cause thunderstorms and rainshowers



LOW PRESSURE AREA (LPA)

Areas of lowest pressure characterized by cloudiness and rainshowers; areas where a tropical cyclone can form



RIDGE OF HIGH PRESSURE AREA (HPA)

An extension of a high pressure area characterized by very light wind and clear skies



LOCALIZED THUNDERSTORM

Isolated heavy and dense dark clouds with one or more sudden electric discharges manifested by lightning and thunder often accompanied by showers of rain.



TAIL-END OF FRONTAL SYSTEM (SHEAR LINE)

Zone of converging winds associated with the extension of a frontal system that often brings thunderstorms and rainshowers



2 or 4 TROPICAL CYCLONES

"Bagyo"; may refer to tropical depression, tropical storm, severe tropical storm, typhoon, or super typhoon.

RAINFALL CONDITION



NEAR NORMAL

+20% or -20% from the normal



ABOVE NORMAL

120% greater than the normal

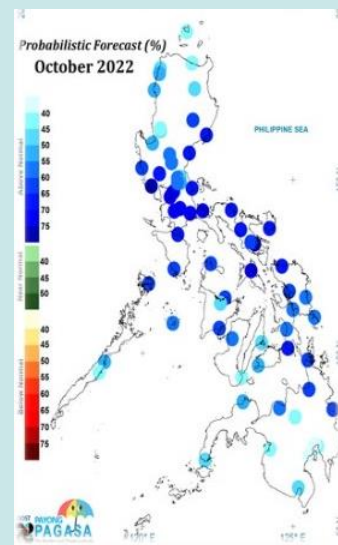
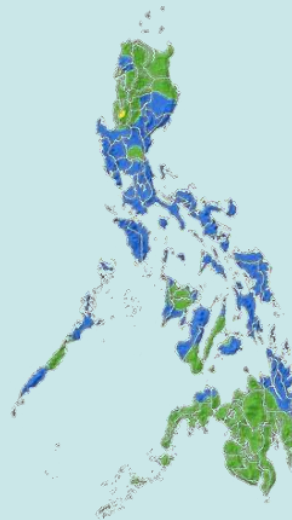
Most areas of the country



ABOVE NORMAL

120% greater than the normal

High probability on most areas of the country



TEMPERATURE

Generally, near average to slightly warmer than average surface air temperatures are predicted in most parts of Luzon and Visayas while near to slightly cooler than average is expected in Mindanao.



Mountainous Luzon
13.0°C to 26.5°C



Metro Manila
21.5°C to 35.0°C



Mountainous Mindanao
15.0°C to 33.5°C



Lowlands Luzon
16.0°C to 36.5°C



Visayas
20.0°C to 35.5°C



Lowlands Mindanao
20.0°C to 37.5°C