

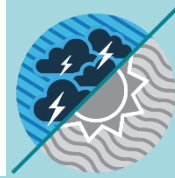


## MONTHLY CLIMATE ASSESSMENT AND OUTLOOK LA NIÑA ALERT

Issued: 09 October 2024

### OVERVIEW

Cool El Niño Southern Oscillation (ENSO)-neutral conditions continue to prevail over the tropical Pacific Ocean. Most climate models combined with expert judgments suggest a 71% chance of La Niña forming in the September-October-November (SON) 2024 season and will likely persist until the first quarter (January-February-March) of 2025. With these model probabilities, borderline La Niña or La Niña-like conditions will be likely in the coming months.



La Niña increases the likelihood of having above-normal rainfall conditions, which could lead to potential adverse impacts such as heavy rainfall, floods, flash floods, and rain-induced landslides over highly vulnerable areas.

### Assessment in September 2024

### WEATHER SYSTEMS THAT AFFECTED THE COUNTRY



#### SOUTHWEST MONSOON (HABAGAT)

Warm moist winds from the southwest caused rains over the western portion of the country from May to September



#### EASTERLIES

Warm winds blowing from the east may bring cloudiness over the eastern part of the country



#### LOCALIZED THUNDERSTORM

Warm isolated heavy and dense dark clouds with one or more sudden electric discharges manifested by lightning and thunder often accompanied by showers of rains.



#### LOW PRESSURE AREA (LPA)

Areas of lowest pressure characterized by cloudiness and rainshowers; areas where a tropical cyclone can form



#### INTERTROPICAL CONVERGENCE ZONE (ITCZ)

Series of low pressure areas brought about by converging Northeast (NE) and Southeast (SE) winds that cause thunderstorms and rainshowers



#### PASSAGE OF SIX (6) TROPICAL CYCLONES OR BAGYO

STS Enteng (Sept. 1-4), TS Ferdie (Sept. 10-14), TD Gener (Sept. 15-18), TS Helen (Sept. 15-18), TD Igme (Sept. 19-21), and STY Julian (Sept. 26-October 04)

### RAINFALL CONDITION



#### NEAR NORMAL

+20% or -20% from the normal



#### ABOVE NORMAL

120% greater than the normal

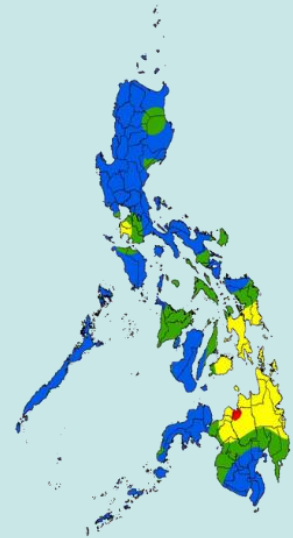
Luzon, western and central parts of Visayas, and western and southern parts of Mindanao



#### BELOW NORMAL

20%-60% reduction from the normal

rest of the country



### TEMPERATURE

Surface air temperatures were generally near average to above average in most parts of the country.



Mountainous Luzon  
16.4°C – 26.6°C



Metro Manila  
23.6°C – 35.4°C



Mountainous Mindanao  
18.0°C – 33.6°C



Lowlands Luzon  
22.5°C – 36.4°C



Visayas  
22.2°C – 36.4°C



Lowlands Mindanao  
21.4°C – 37.2°C












## MONTHLY CLIMATE ASSESSMENT AND OUTLOOK LA NIÑA ALERT

Issued: 09 October 2024

### Outlook in October 2024

## EXPECTED WEATHER SYSTEMS

<p><b>SW</b> <b>SOUTHWEST MONSOON (HABAGAT)</b> Warm moist winds from the southwest caused rains over the western portion of the country from May to September</p> 	<p><b>E</b> <b>EASTERLIES</b> Warm winds blowing from the east may bring cloudiness over the eastern part of the country</p> 	<p><b>RIDGE OF HIGH PRESSURE AREA (HPA)</b> An extension of a high pressure area characterized by a very light wind and clear skies</p> 	<p><b>L</b> <b>LOW PRESSURE AREA (LPA)</b> Areas of lowest pressure characterized by cloudiness and rainshowers; areas where a tropical cyclone can form</p> 
<p>Transition</p> 			
<p><b>NE</b> <b>NORTHEAST MONSOON (AMIHAN)</b> Cold and drier winds from the northeast bring rains over the eastern side of the country</p> 	<p><b>LOCALIZED THUNDERSTORM</b> Warm isolated heavy and dense dark clouds with one or more sudden electric discharges manifested by lightning and thunder often accompanied by showers of rains.</p> 	<p><b>INTERTROPICAL CONVERGENCE ZONE (ITCZ)</b> Series of low pressure areas brought about by converging Northeast (NE) and Southeast (SE) winds that cause thunderstorms and rainshowers</p> 	<p><b>PASSAGE OF 2 OR 3 TROPICAL CYCLONES OR BAGYO</b> "Bagyo"; may refer to tropical depression, tropical storm, severe tropical storm, typhoon, or super typhoon.</p> 

## RAINFALL CONDITION

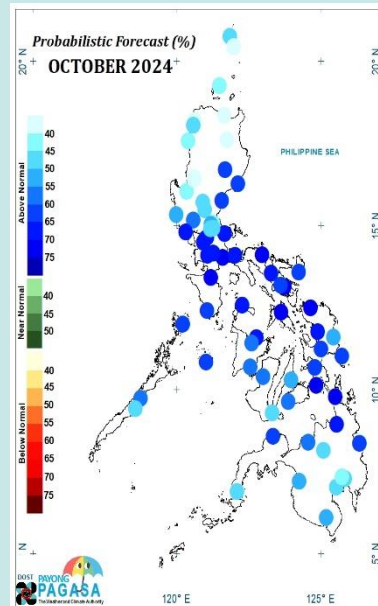
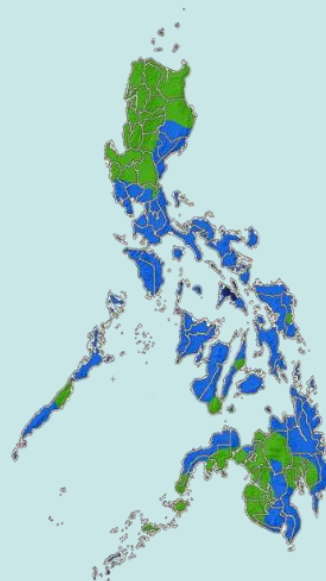
**NEAR NORMAL**  
+20% or -20% from the normal

**ABOVE NORMAL**  
120% greater than the normal

most parts of the country

**ABOVE NORMAL**  
120% greater than the normal

Probabilistic forecast shows that most parts of the country have a high chance of above-normal rainfall conditions



## TEMPERATURE

Generally, near-average to warmer-than-average surface air temperatures are expected in most parts of the country in October except for some stations in Southern Luzon and Visayas where slightly cooler-than-average temperatures are likely.

Mountainous Luzon  
12.5°C to 26.5°C

Metro Manila  
21.5°C to 35.0°C

Mountainous Mindanao  
16.5°C to 34.0°C

Lowlands Luzon  
16.5°C to 35.5°C

Visayas  
20.5°C to 36.0°C

Lowlands Mindanao  
19.5°C to 36.5°C