

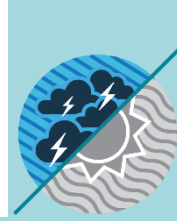


MONTHLY CLIMATE ASSESSMENT AND OUTLOOK LA NIÑA ALERT

Issued: 09 December 2024

OVERVIEW

La Niña-like conditions are currently prevailing in the tropical Pacific, despite sea surface temperature anomalies (SSTAs) in the monitored Niño region remains within the cool ENSO-neutral range.



La Niña-like condition increases the likelihood of having above-normal rainfall conditions, which could lead to potential adverse impacts such as heavy rainfall, floods, flash floods, and rain-induced landslides over highly vulnerable areas.

Assessment in November 2024

WEATHER SYSTEMS THAT AFFECTED THE COUNTRY

NE NORTHEAST MONSOON (AMIHAN)
Cold and drier winds from the northeast bring rains over the eastern side of the country



EASTERLIES
Warm winds blowing from the east may bring cloudiness over the eastern part of the country



LOCALIZED THUNDERSTORM
Warm isolated heavy and dense dark clouds with one or more sudden electric discharges manifested by lightning and thunder often accompanied by showers of rains.



PASSAGE OF FOUR (4) TROPICAL CYCLONES
Typhoon (TY) Marce (international name: Yixing), Typhoon (TY) Nika (Toraji), Super Typhoon (STY) Ofel (Usagi), and Super Typhoon (STY) Pepito (Man-yi)

L LOW PRESSURE AREA (LPA)
Areas of lowest pressure characterized by cloudiness and rainshowers; areas where a tropical cyclone can form

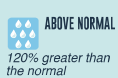


ITCZ INTERTROPICAL CONVERGENCE ZONE (ITCZ)
Series of low pressure areas brought about by converging Northeast (NE) and Southeast (SE) winds that cause thunderstorms and rainshowers

SHEAR LINE

Zone of converging winds associated with the extension of a frontal system that often brings thunderstorms and rainshowers

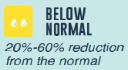
RAINFALL CONDITION



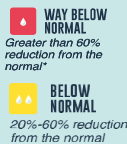
ABOVE NORMAL
120% greater than the normal
Northern Luzon and parts of Central Luzon



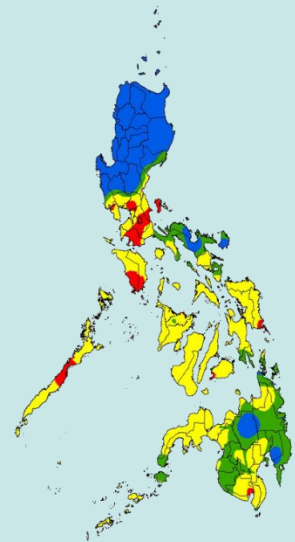
NEAR NORMAL
+20% or -20% from the normal
Bicol Region and most of Mindanao



BELOW NORMAL
20%-60% reduction from the normal
SOCCKSARGEN and the Zamboanga Peninsula



WAY BELOW NORMAL
Greater than 80% reduction from the normal
rest of the country



TEMPERATURE

Surface air temperatures in November were generally warmer-than-average in most parts of the country.



Mountainous Luzon
15.6°C to 28.2°C



Metro Manila
22.5°C to 34.0°C



Mountainous Mindanao
18.4°C to 33.8°C



Lowlands Luzon
21.0°C to 29.5°C



Visayas
23.5°C to 31.8°C



Lowlands Mindanao
22.1°C to 33.9°C



MONTHLY CLIMATE ASSESSMENT AND OUTLOOK LA NIÑA ALERT

Issued: 09 December 2024

Outlook in December 2024

EXPECTED WEATHER SYSTEMS



NORTHEAST MONSOON (AMIHAN)

Cold and drier winds from the northeast bring rains over the eastern side of the country



LOCALIZED THUNDERSTORM

Warm isolated heavy and dense dark clouds with one or more sudden electric discharges manifested by lightning and thunder often accompanied by showers of rains.



LOW PRESSURE AREA (LPA)

Areas of lowest pressure characterized by cloudiness and rainshowers; areas where a tropical cyclone can form



PASSAGE OF 1-2 TROPICAL CYCLONES BAGYO

"Bagyo"; may refer to tropical depression, tropical storm, severe tropical storm, typhoon, or super typhoon.



EASTERLIES

Warm winds blowing from the east may bring cloudiness over the eastern part of the country



RIDGE OF HIGH PRESSURE AREA (HPA)

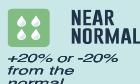
An extension of a high pressure area characterized by a very light wind and clear skies



SHEAR LINE

Zone of converging winds associated with the extension of a frontal system that often brings thunderstorms and rainshowers

RAINFALL CONDITION



NEAR NORMAL

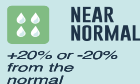
+20% or -20% from the normal



ABOVE NORMAL

120% greater than the normal

most parts of the country



NEAR NORMAL

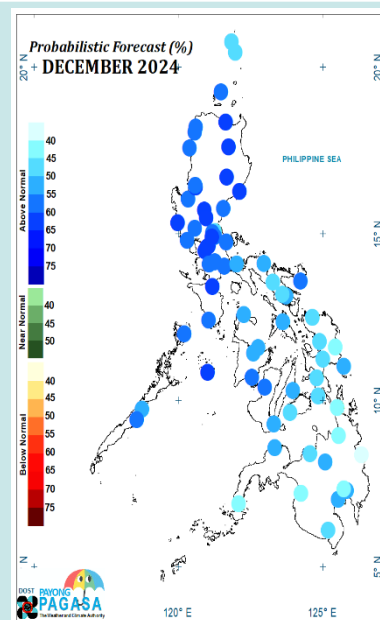
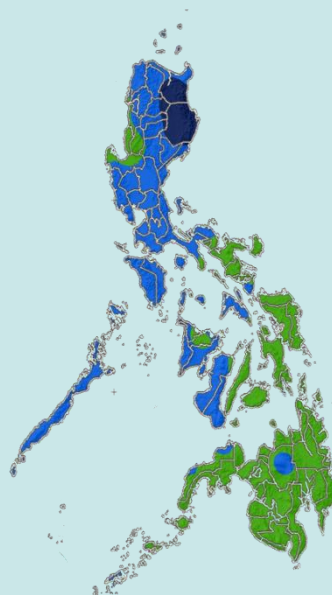
+20% or -20% from the normal



ABOVE NORMAL

120% greater than the normal

Probabilistic forecasts further suggest a high likelihood of near-to above-normal rainfall conditions in most regions



TEMPERATURE

In terms of temperature, near-average to warmer-than-average surface air temperatures are generally expected in most parts of the country.



Mountainous Luzon
11.8°C to 26.8°C



Metro Manila
14.0°C to 33.7°C



Mountainous Mindanao
14.0°C to 33.7°C



Lowlands Luzon
17.4°C to 37.6°C



Visayas
21.3°C to 35.0°C



Lowlands Mindanao
19.4°C to 36.2°C